

1

2

3

4

5

A

B

C

D

□~	~	~	~	~	~
-0.2	±	±	±	±	±
COMMON		TOLERANCE		LIMITS	

2R:2mm

**SOUNDFREQ®** Model:SFQ-09

---

Double Spot  
 Input : DC 12V  $\equiv$  2.5A  $\diamond$   $\diamond$   
 Made in China

(BC)  
 Energy Verified  
 Rendement  
 Énergétique Vérifié

FCC ID:UZZSFQ09  
 IC:7633A-SFQ09

THIS DEVICE COMPLIES WITH PART 15 OF THE FCC RULES. OPERATION IS SUBJECT TO THE FOLLOWING TWO CONDITIONS: (1) THIS DEVICE MAY NOT CAUSE HARMFUL INTERFERENCE, AND (2) THIS DEVICE MUST ACCEPT ANY INTERFERENCE RECEIVED, INCLUDING INTERFERENCE THAT MAY CAUSE UNDESIRE OPERATION.  
 CAN ICES-3 (B)/NMB-3(B)

48.65mm<sup>+0</sup><sub>-0.2</sub>

94.6mm<sup>+0</sup><sub>-0.2</sub>

					<b>Beautiful Enterprise Co., Ltd</b>				
		DRAW		CHECK		APPROVE		VER	ISSUED
								01	2013.12.20
MATERIAL					DESCRIPTION				
Art paper (过哑胶)					Rating label				
FINISH					B/E PART NO				
Printing : BLACK					460-032604-000V0				
SCALE				SHEET		DRAWING NO			
/				1 OF 1		460-032604-000V0			
NO.		DATE		REVISION RECORD		Project		Model	
						SFQ-09		SFQ-09 05B	
								(B/E) (Customer)	
								mm	

2

3

4

5

1

2

3

4

5

A

B

C

D

□~	~	~	~	~	~
-0.2	±	±	±	±	±
COMMON		TOLERANCE		LIMITS	

2R:2mm

**SOUNDFREQ®** Model:SFQ-09RB

---

Double Spot  
 Input : DC 12V  $\equiv$  2.5A  $\diamond$   $\diamond$   
 Made in China

(BC)  
 Energy Verified  
 Rendement  
 Énergétique Vérifié

FCC ID:UZZSFQ09  
 IC:7633A-SFQ09

THIS DEVICE COMPLIES WITH PART 15 OF THE FCC RULES. OPERATION IS SUBJECT TO THE FOLLOWING TWO CONDITIONS: (1) THIS DEVICE MAY NOT CAUSE HARMFUL INTERFERENCE, AND (2) THIS DEVICE MUST ACCEPT ANY INTERFERENCE RECEIVED, INCLUDING INTERFERENCE THAT MAY CAUSE UNDESIRE OPERATION.  
 CAN ICES-3 (B)/NMB-3(B)

48.65mm <sup>+0</sup>/<sub>-0.2</sub>

94.6mm <sup>+0</sup>/<sub>-0.2</sub>

					<b>Beautiful Enterprise Co., Ltd</b>				
		DRAW		CHECK		APPROVE		VER	ISSUED
								01	2014.1.22
MATERIAL						DESCRIPTION			
Art paper (过哑胶)						Rating label			
FINISH						B/E PART NO			
Printing : BLACK									
SCALE			SHEET		DRAWING NO				
			1 OF 1						
NO.	DATE	REVISION RECORD			Project		Model		(B/E) (Customer)
					SFQ-09RB		SFQ-09RB 05B		mm

2

3

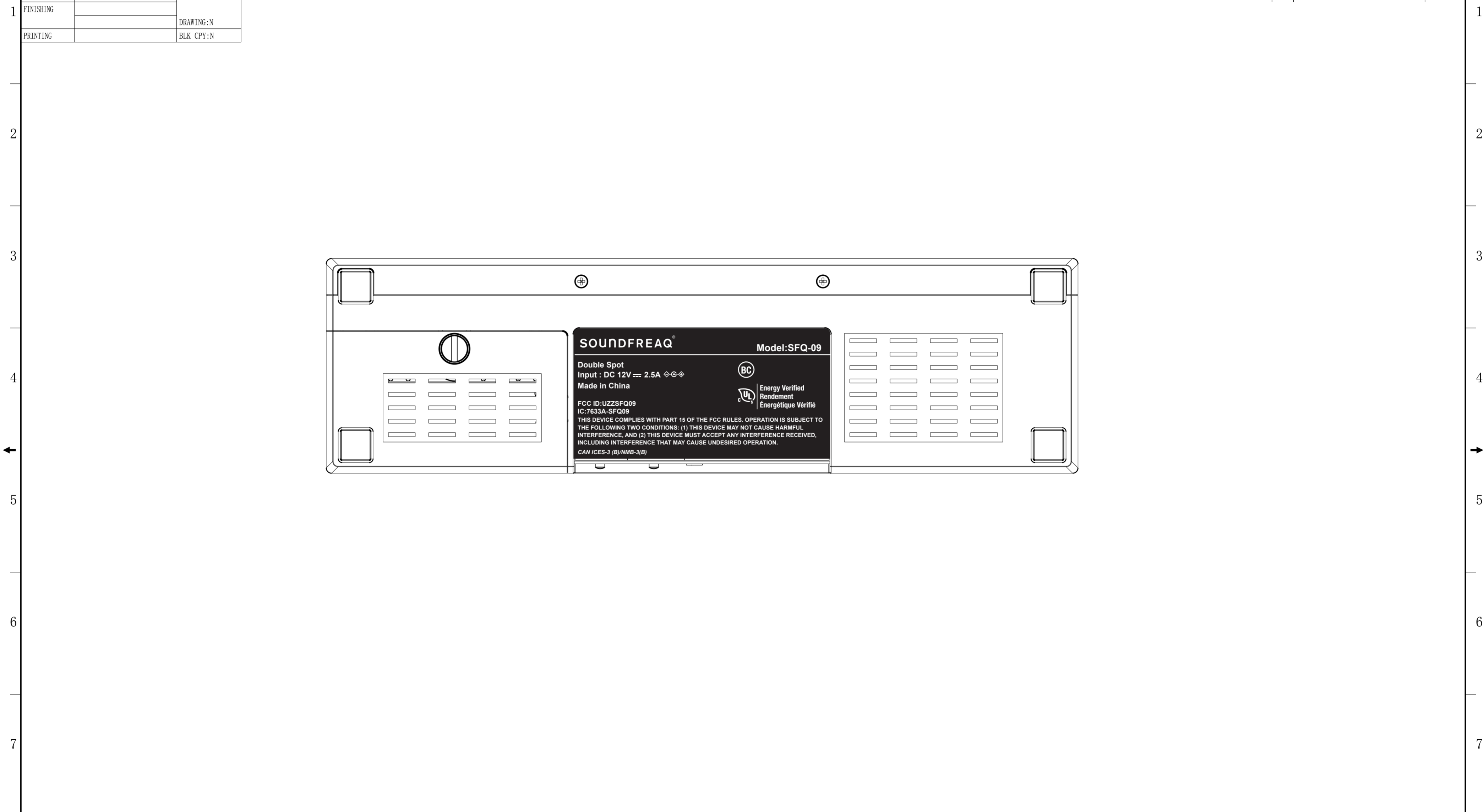
4

5

A B C D E F G H I J

TOOLING	EDM EF BF ENGRV	TEXTURE
TEXTURE		DRAWING:N
MATERIAL		MASKING
FINISHING		DRAWING:N
PRINTING		BLK CPY:N

REVISION RECORD		
NO	DESCRIPTION	DATE



NOTE: UNLESS OTHERWISE SPECIFIED  
 1, ALL UNSPECIFIED DRAFT ANGLE TO BE 0.5 °X  
 2, ALL DIMENSIONS IS BASE OF DRAFT ANGLE.  
 3, ALL SHARP CORNER IS R0.3MM.  
 4, UNSPECIFIED DIMENSIONS TO BE SYMMETRICAL CENTER LINE.  
 5, DON'T SCALE THE DRAWING.

<b>Beautiful Enterprise Co. Ltd</b>					
GENERAL TOLERANCES :		DRAW/DATE:	DESCRIPTION:		
0~30mm	±0.1	CHECK/DATE:	DRAWING NO:		
31~50mm	±0.15	APPROVE/DATE:	B/E PART NO:	CUSTOMER PART NO:	
150~350mm	±0.2	PROJECT:	DRAWING FILE NAME:	ISSUE DATE:	
>350mm	±0.3	UNIT: mm	MODEL:	MATERIAL:	REV: 1
.XxX	±0.3X	SCALE:			SHEET: 1 OF 1

A B C D E F G H I J



**Label location**