

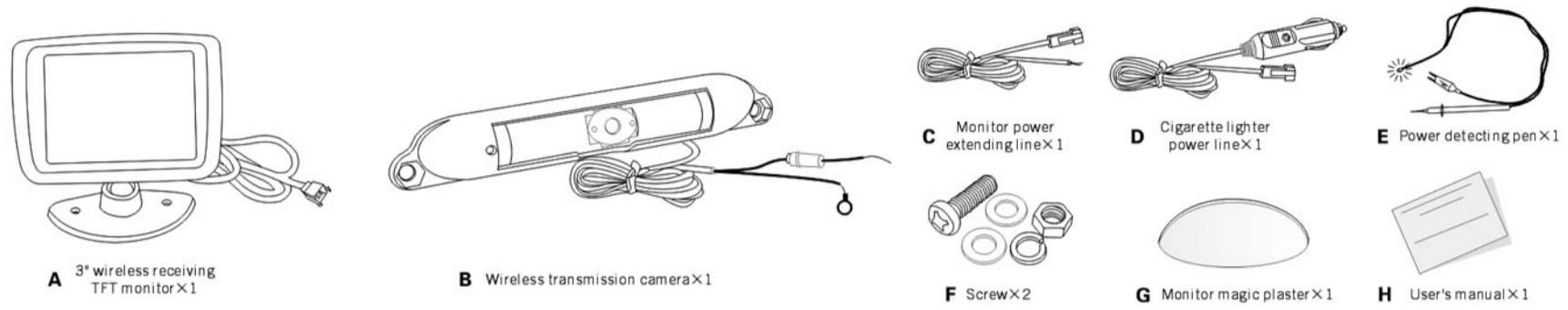


Wireless rear view camera systems

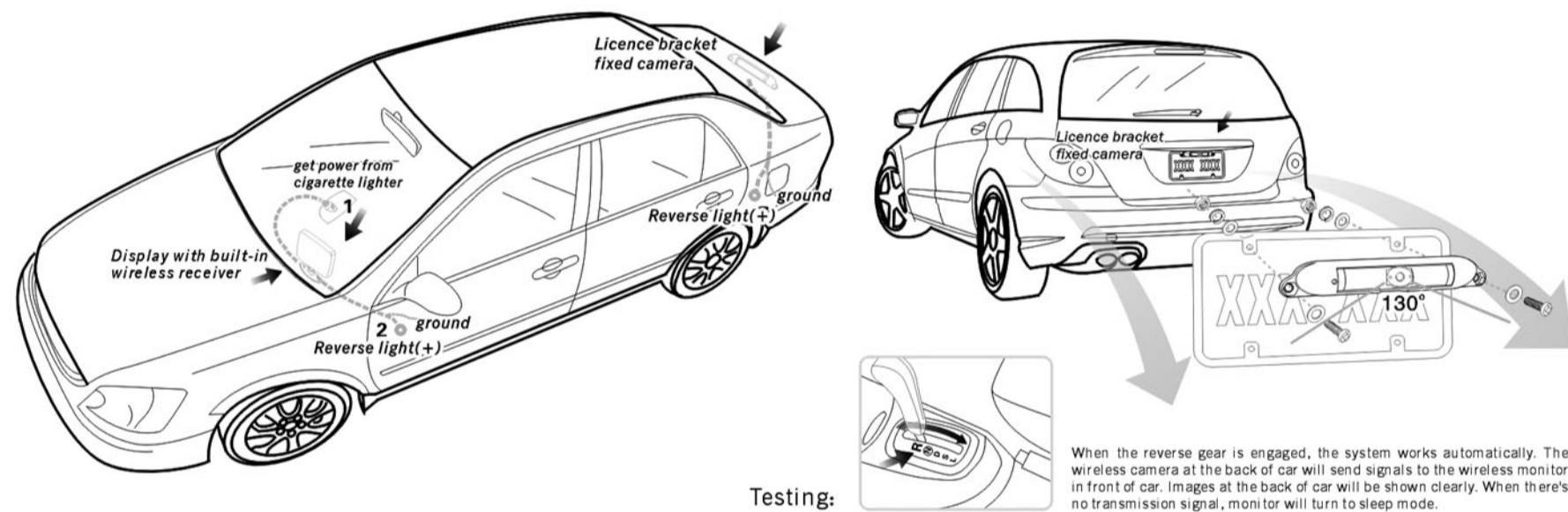
VTC430R User's manual

Thank you for your choosing this product

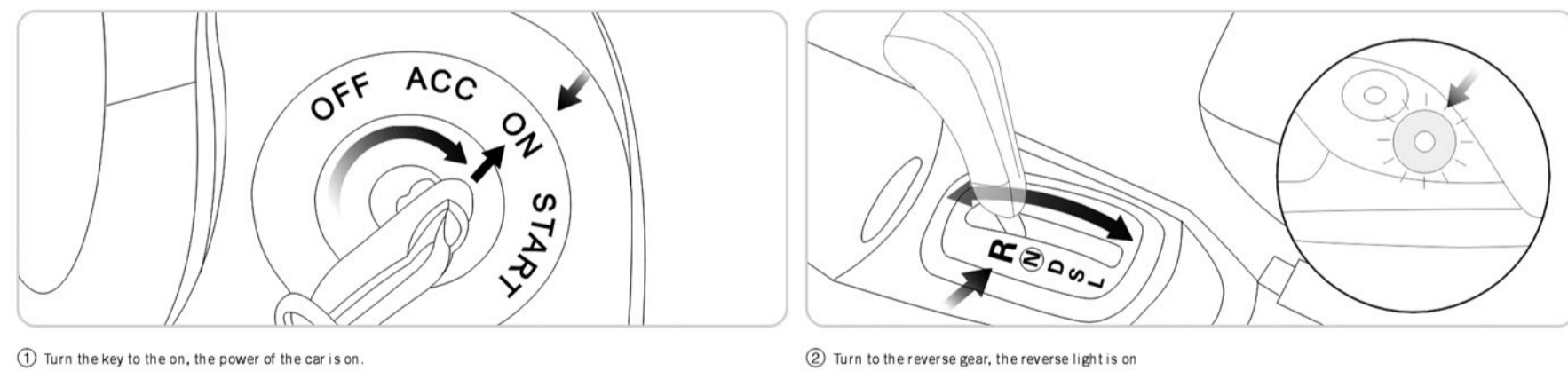
1. Parts list



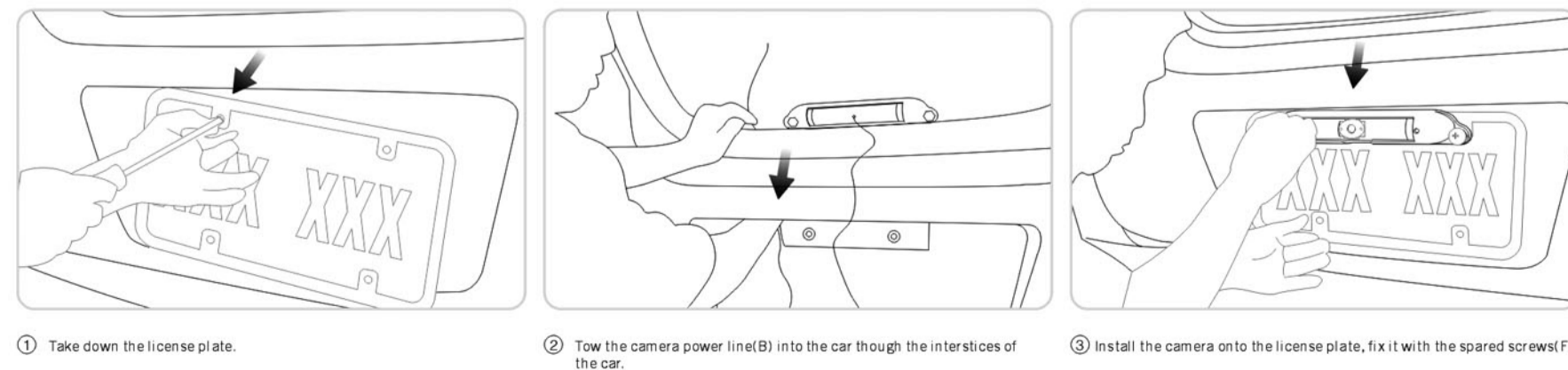
2. Testing



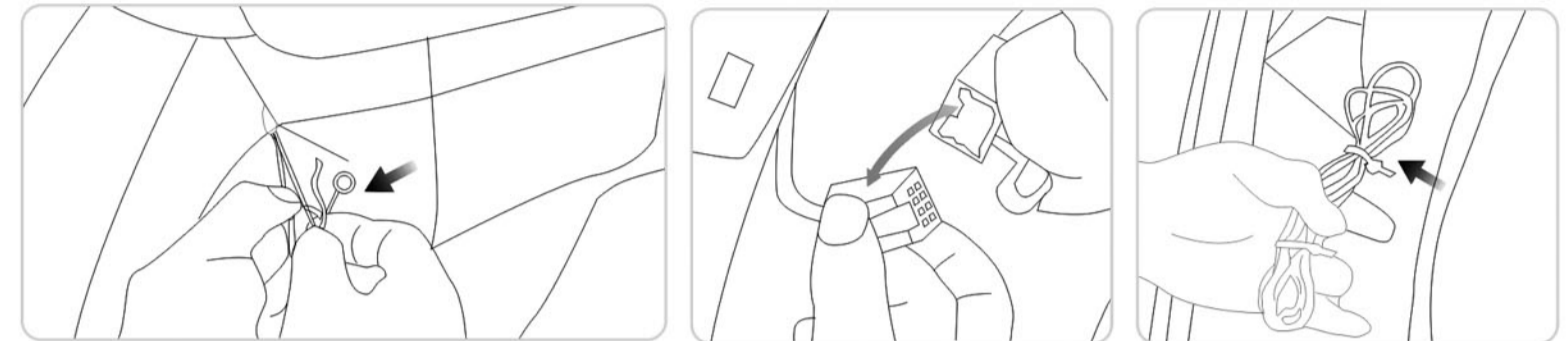
3. Preparations



4. Camera installation



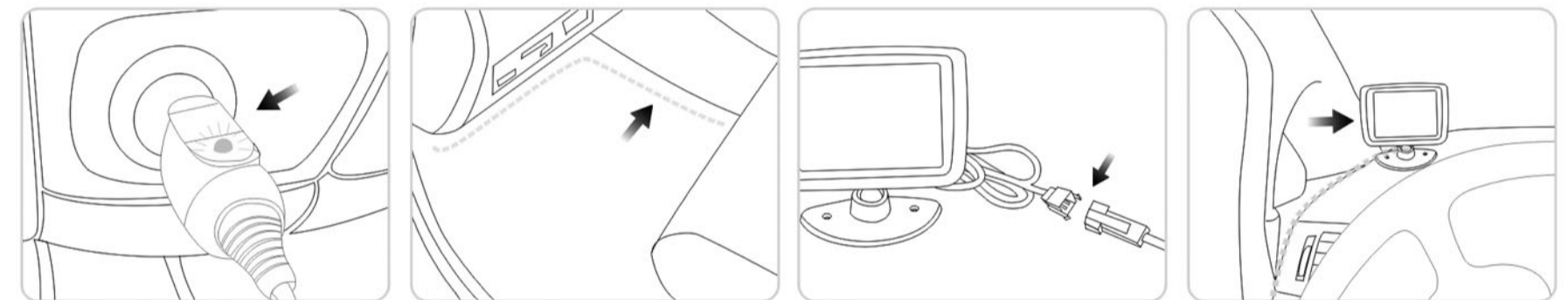
- Find the power line from the reverse light with the power detecting pen (E)
- Find the power lines from the trunk at the back of car. Cut off the power of car.
- Black clamp connects to any iron part of car. Use the red pen to test every power line from the reverse light until the LED light is on. Then you can ensure that this is the power line.



- Connect the camera power line to the reverse light power line, anode to anode, cathode to cathode, then fix the cables with the rubberized fabric.
- Connect the power lines as before.
- Enlace and hind other lines properly.

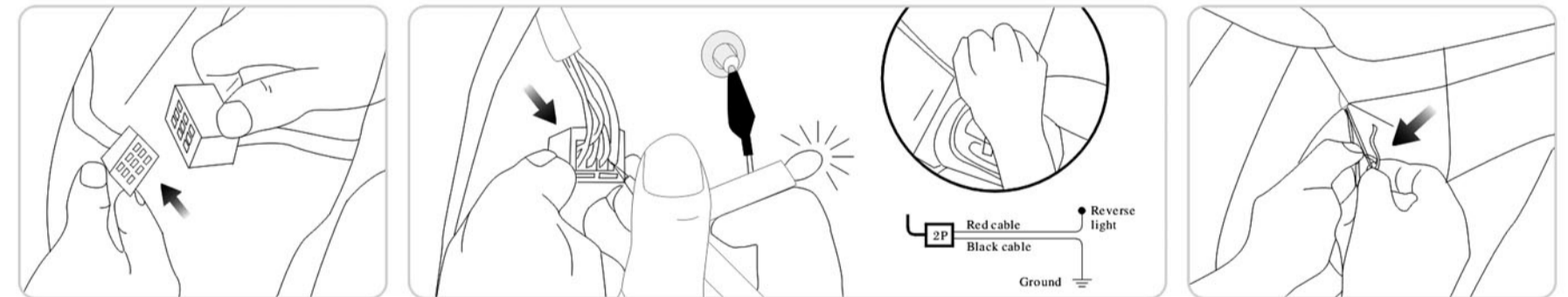
5. Two methods of monitor installation

1. Installation with cigarette lighter

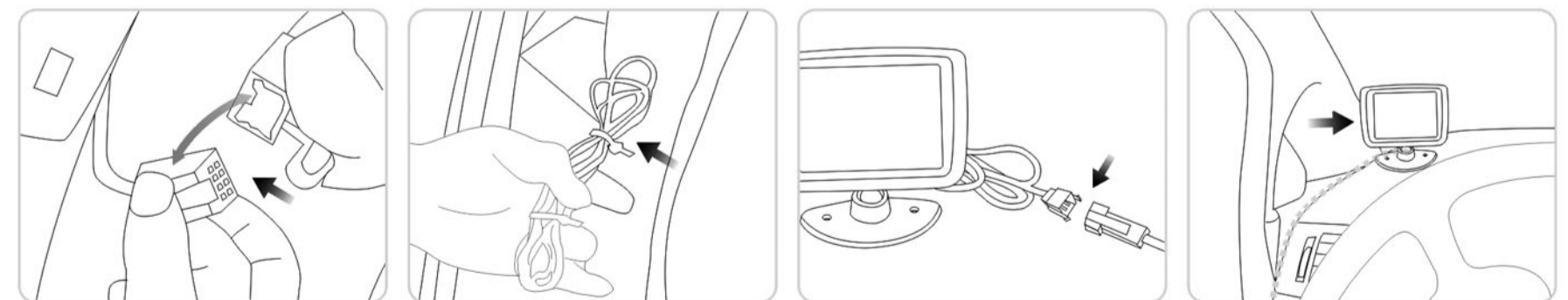


- Insert the cigarette lighter power line (D) into the cigarette lighter in the car. When the light of the cigarette lighter is on, the power is on.
- Tow the cigarette lighter power line (D) to the dashboard through the interstices of the car.
- Connect the cigarette lighter power line (D) to the 3" monitor (A)
- Fix the monitor with the magic plaster (H) onto the dashboard where is suitable.

2. Installation of power from the front reverse light



- Find the power lines from the driving room, cut off the power of car.
- Black clamp connects to any iron part of car. Use the red pen to test every power line from the reverse light until the LED light is on. Then you can ensure that this is the power line.
- Connect the monitor power extending line (C) to the reverse light power line, anode to anode, cathode to cathode, then fix the cables with the rubberized fabric.



- Connect the power lines as before.
- Enlace and hind other lines properly.
- Connect the monitor power extending line (C) to the 3" monitor (A)
- Fix the monitor with the magic plaster (H) onto the dashboard where is suitable.

FCC Statement

- This device complies with Part 15 of the FCC Rules. Operation is subject to the following two conditions:
 - This device may not cause harmful interference, and
 - This device must accept any interference received, including interference that may cause undesired operation.
- Changes or modifications not expressly approved by the party responsible for compliance could void the user's authority to operate the equipment.