



## WS5002 Antenna SPECIFICATION

Antenna Manufacturer Name	Universal Global Scientific Industrial Co., Ltd.
Address	No.141, Lane 351, Sec.1, Taiping Road, Tsaotuen, Nantou County 542007, Taiwan
P/N:	46-500524-01
Test DATE	2021/01/14
DATASHEET REVISION	V01

Test Engineer: George Weng



## Description of Antenna

Frequency Range	2400-2500MHz and 5150-5850MHz
Impedance	50 ohm
Antenna type	PIFA
Manufacturing Process	LDS

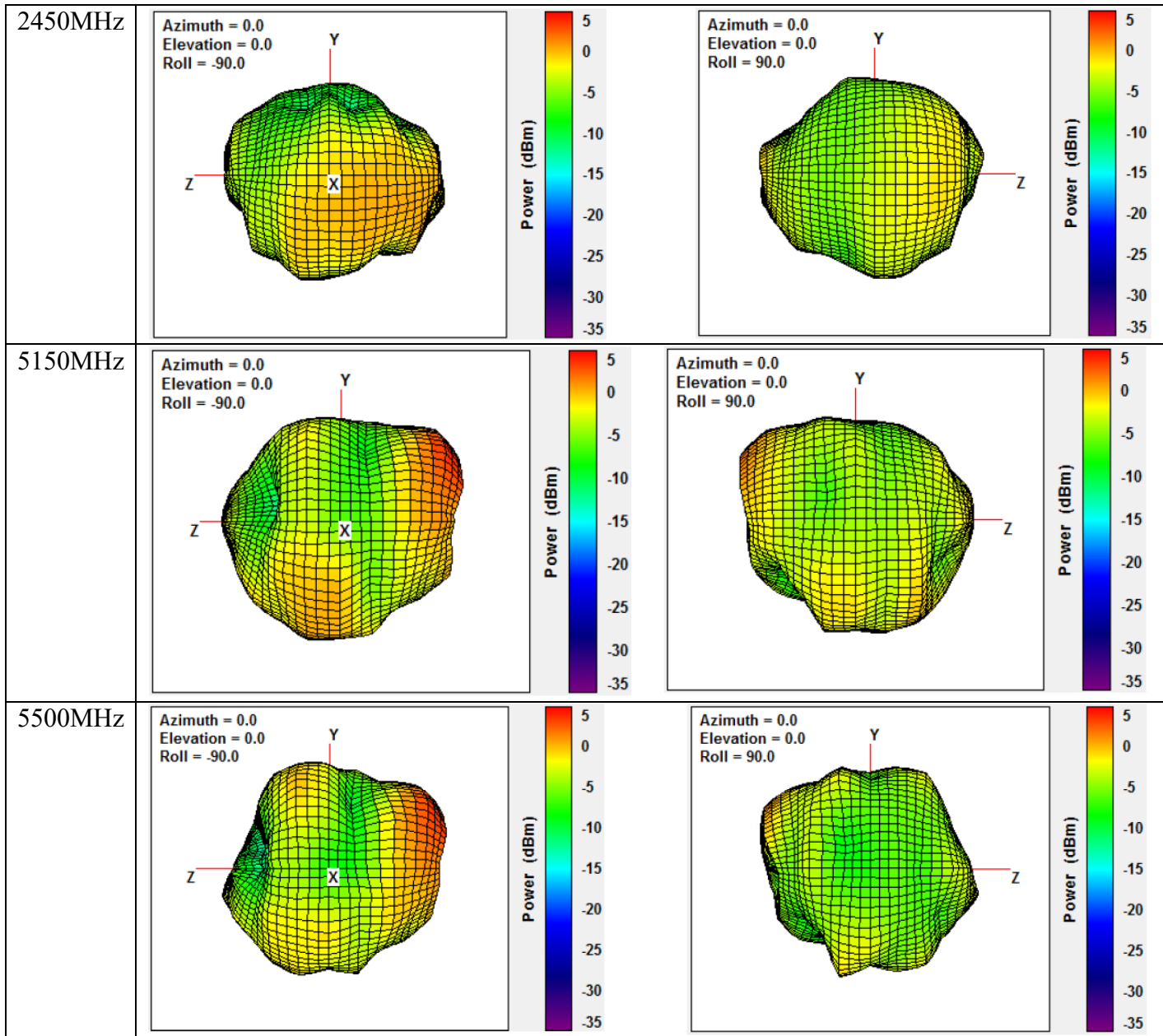
Antenna Peak Gain:

Frequency (MHz)	Peak gain (dBi)
2400	2.39
2450	2.50
2500	2.45
5150	3.86
5250	3.92
5350	3.92
5450	3.80
5550	3.76
5650	2.66
5750	3.13
5850	2.21



# Zebra Technologies Corporation

Antenna Pattern:



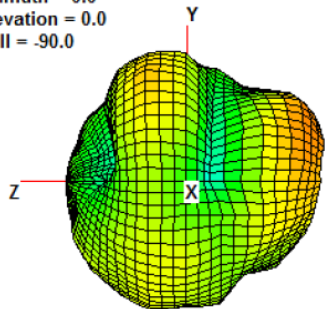


ZEBRA

# Zebra Technologies Corporation

5850MHz

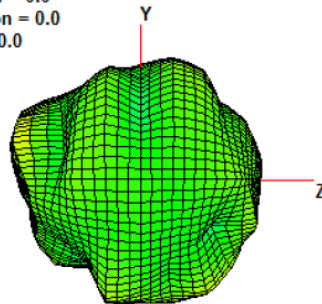
Azimuth = 0.0  
Elevation = 0.0  
Roll = -90.0



Power (dBm)

5  
0  
-5  
-10  
-15  
-20  
-25  
-30  
-35

Azimuth = 0.0  
Elevation = 0.0  
Roll = 90.0



Power (dBm)

5  
0  
-5  
-10  
-15  
-20  
-25  
-30  
-35