

System Check_Head_2450MHz

DUT: D2450V2 - SN736

Communication System: CW; Frequency: 2450.000 MHz

Medium: HSL_2450_240402 Medium parameters used: $f=2450.000$ MHz; $\sigma=1.83$ S/m; $\epsilon_r=39.6$

Ambient Temperature: 23.5°C; Liquid Temperature: 22.5°C

DASY8 Configuration:

- Probe: EX3DV4 - SN7822; ConvF(6.89, 6.89, 7.21); Calibrated: 2023-08-02
- Sensor-Surface: 1.4 mm
- Electronics: DAE4ip Sn1823; Calibrated: 2023-07-31
- Phantom: Twin-SAM V8.0 (30deg probe tilt); Serial: 2149; Section: Flat
- Measurement Software: 16.2.4.2524
- UID: CW, 0--

Pin=17.0dBm/Area Scan (40.0 mm x 80.0 mm): Measurement Grid: 10.0 mm x 10.0 mm

SAR (1g) = 2.46 W/kg; SAR (10g) = 1.13 W/kg;

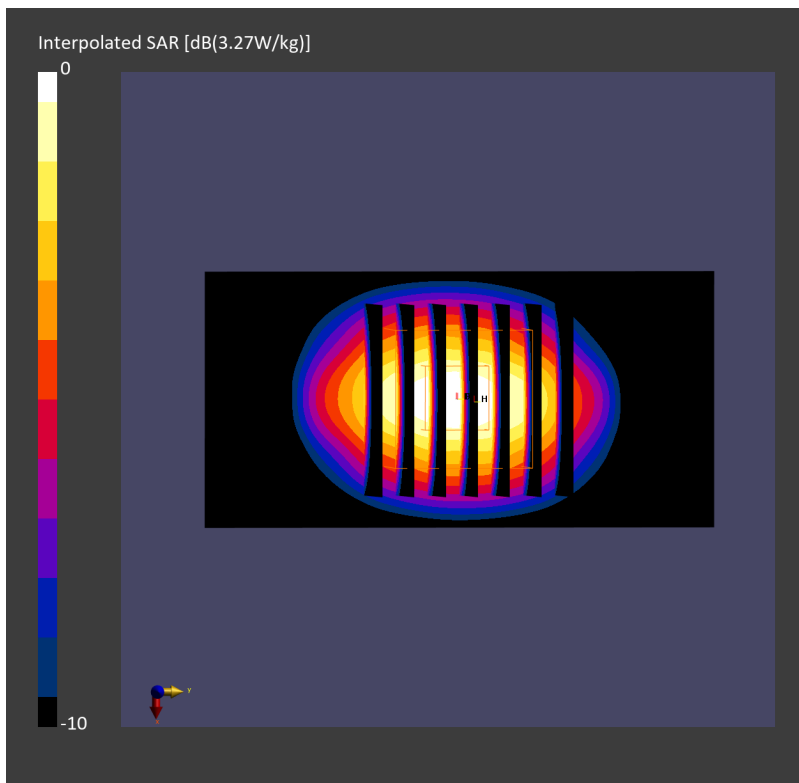
Pin=17.0dBm/Zoom Scan (30.0 mm x 30.0 mm x 30.0 mm): Measurement Grid: 5.0 mm x 5.0 mm x 1.5 mm

Power Drift = 0.03 dB

SAR (1g) = 2.48 W/kg; SAR (8g) = 1.28 W/kg; SAR (10g) = 1.16 W/kg

Smallest distance from peaks to all points 3 dB below = 9.0 mm

Ratio of SAR at M2 to SAR at M1 = 80.8 %



System Check_Head_5250MHz

DUT: D5GHzV2 - SN1006

Communication System: CW; Frequency: 5250.000 MHz

Medium: HSL_5250_240402 Medium parameters used: $f=5250.000$ MHz; $\sigma=4.78$ S/m; $\epsilon_r=36.8$

Ambient Temperature: 23.5°C; Liquid Temperature: 22.5°C

DASY8 Configuration:

- Probe: EX3DV4 - SN7822; ConvF(5.38, 5.34, 5.57); Calibrated: 2023-08-02
- Sensor-Surface: 1.4 mm
- Electronics: DAE4ip Sn1823; Calibrated: 2023-07-31
- Phantom: Twin-SAM V8.0 (30deg probe tilt); Serial: 2149; Section: Flat
- Measurement Software: 16.2.4.2524
- UID: CW, 0--

Pin=20.0dBm/Area Scan (40.0 mm x 80.0 mm): Measurement Grid: 10.0 mm x 10.0 mm

SAR (1g) = 7.00 W/kg; SAR (10g) = 1.98 W/kg;

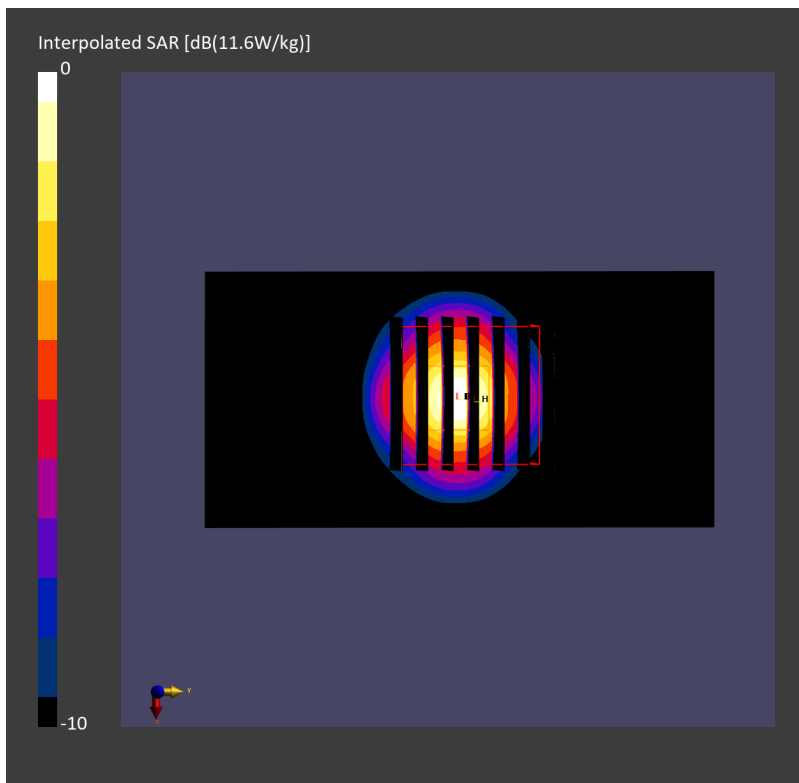
Pin=20.0dBm/Zoom Scan (22.0 mm x 22.0 mm x 22.0 mm): Measurement Grid: 4.0 mm x 4.0 mm x 1.4 mm

Power Drift = -0.01 dB

SAR (1g) = 7.45 W/kg; SAR (8g) = 2.48 W/kg; SAR (10g) = 2.13 W/kg

Smallest distance from peaks to all points 3 dB below = 7.4 mm

Ratio of SAR at M2 to SAR at M1 = 64.2 %



System Check_Head_5600MHz

DUT: D5GHzV2 - SN1006

Communication System: CW; Frequency: 5600.000 MHz

Medium: HSL_5600_240402 Medium parameters used: $f=5600.000$ MHz; $\sigma=5.15$ S/m; $\epsilon_r=36.3$

Ambient Temperature: 23.5°C; Liquid Temperature: 22.5°C

DASY8 Configuration:

- Probe: EX3DV4 - SN7822; ConvF(4.59, 4.48, 4.7); Calibrated: 2023-08-02
- Sensor-Surface: 1.4 mm
- Electronics: DAE4ip Sn1823; Calibrated: 2023-07-31
- Phantom: Twin-SAM V8.0 (30deg probe tilt); Serial: 2149; Section: Flat
- Measurement Software: 16.2.4.2524
- UID: CW, 0--

Pin=17.0dBm/Area Scan (40.0 mm x 80.0 mm): Measurement Grid: 10.0 mm x 10.0 mm

SAR (1g) = 3.80 W/kg; SAR (10g) = 1.05 W/kg;

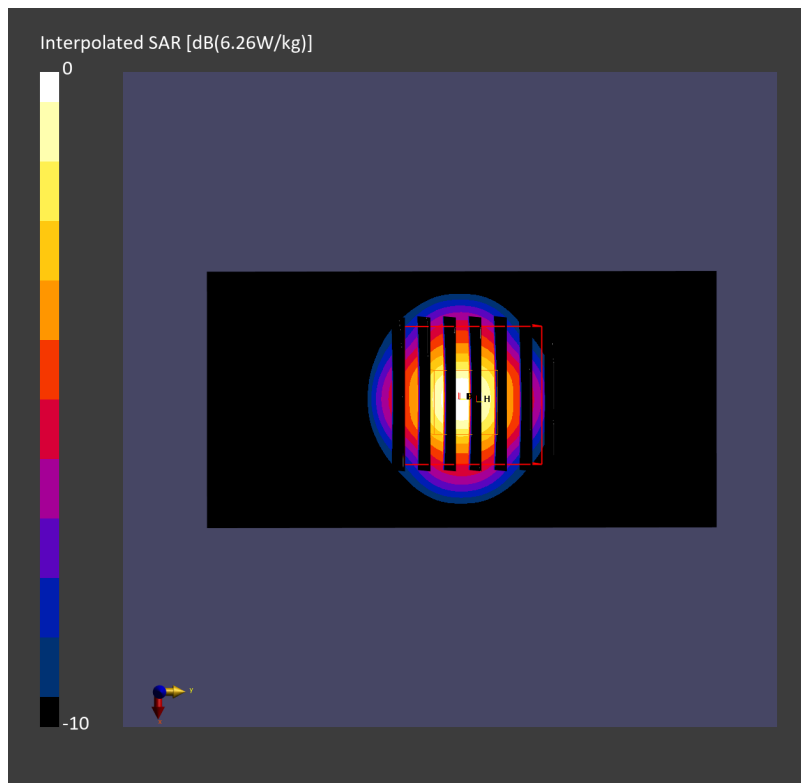
Pin=17.0dBm/Zoom Scan (22.0 mm x 22.0 mm x 22.0 mm): Measurement Grid: 4.0 mm x 4.0 mm x 1.4 mm

Power Drift = -0.01 dB

SAR (1g) = 3.95 W/kg; SAR (8g) = 1.29 W/kg; SAR (10g) = 1.10 W/kg

Smallest distance from peaks to all points 3 dB below = 7.2 mm

Ratio of SAR at M2 to SAR at M1 = 62.3 %



System Check_Head_5750MHz

DUT: D5GHzV2 - SN1006

Communication System: CW; Frequency: 5750.000 MHz

Medium: HSL_5750_240402 Medium parameters used: $f=5750.000$ MHz; $\sigma=5.32$ S/m; $\epsilon_r=36.1$

Ambient Temperature: 23.5°C; Liquid Temperature: 22.5°C

DASY8 Configuration:

- Probe: EX3DV4 - SN7822; ConvF(4.68, 4.58, 4.85); Calibrated: 2023-08-02
- Sensor-Surface: 1.4 mm
- Electronics: DAE4ip Sn1823; Calibrated: 2023-07-31
- Phantom: Twin-SAM V8.0 (30deg probe tilt); Serial: 2149; Section: Flat
- Measurement Software: 16.2.4.2524
- UID: CW, 0--

Pin=17.0dBm/Area Scan (40.0 mm x 80.0 mm): Measurement Grid: 10.0 mm x 10.0 mm

SAR (1g) = 3.72 W/kg; SAR (10g) = 1.04 W/kg;

Pin=17.0dBm/Zoom Scan (22.0 mm x 22.0 mm x 22.0 mm): Measurement Grid: 4.0 mm x 4.0 mm x 1.4 mm

Power Drift = -0.03 dB

SAR (1g) = 3.85 W/kg; SAR (8g) = 1.24 W/kg; SAR (10g) = 1.09 W/kg

Smallest distance from peaks to all points 3 dB below = 7.6 mm

Ratio of SAR at M2 to SAR at M1 = 60.4 %

