

## System Check\_Head\_2450MHz

### DUT: D2450V2 - SN929

Communication System: CW; Frequency: 2450.000 MHz; Duty Cycle: 1:1

Medium: HSL\_2450\_240222 Medium parameters used:  $f=2450.000$  MHz;  $\sigma=1.80$  S/m;  $\epsilon_r=39.7$

Ambient Temperature: 23.5°C; Liquid Temperature: 22.5°C

#### DASY6 Configuration:

- Probe: EX3DV4 - SN7625; ConvF(7.67, 7.67, 7.67); Calibrated: 2023-12-14
- Sensor-Surface: 1.4 mm
- Electronics: DAE4 Sn1694; Calibrated: 2023-11-17
- Phantom: Twin-SAM V4.0 (30deg probe tilt); Serial: 1488; Section: Flat
- Measurement Software: 16.2.4.2524
- UID: CW

**Pin=17.0dBm/Area Scan (40.0 mm x 80.0 mm):** Measurement Grid: 10.0 mm x 10.0 mm

SAR (1g) = 2.49 W/kg; SAR (10g) = 1.18 W/kg;

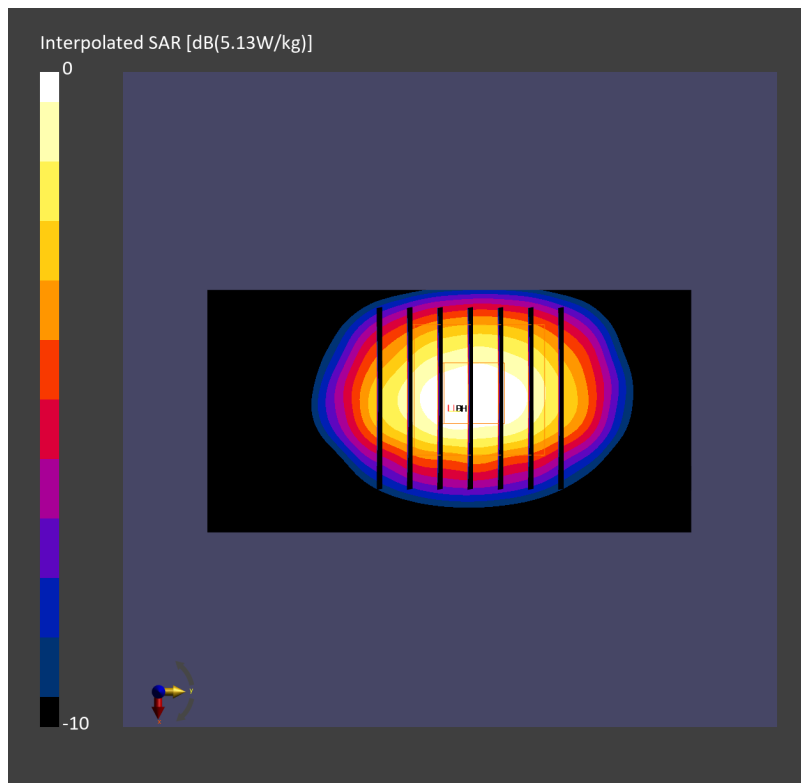
**Pin=17.0dBm/Zoom Scan (30.0 mm x 30.0 mm x 30.0 mm):** Measurement Grid: 5.0 mm x 5.0 mm x 1.5 mm

Power Drift = -0.02 dB

SAR (1g) = 2.55 W/kg; SAR (8g) = 1.33 W/kg; SAR (10g) = 1.20 W/kg

Smallest distance from peaks to all points 3 dB below = 9.0 mm

Ratio of SAR at M2 to SAR at M1 = 81.2 %



## System Check\_Head\_5250MHz

### DUT: D5GHzV2 - SN1006

Communication System: CW; Frequency: 5250.000 MHz; Duty Cycle: 1:1

Medium: HSL\_5G\_240221 Medium parameters used:  $f = 5250.000$  MHz;  $\sigma = 4.61$  S/m;  $\epsilon_r = 36.9$

Ambient Temperature: 23.5°C; Liquid Temperature: 22.5°C

#### DASY6 Configuration:

- Probe: EX3DV4 - SN7625; ConvF(5.48, 5.48, 5.48); Calibrated: 2023-12-14
- Sensor-Surface: 1.4 mm
- Electronics: DAE4 Sn1694; Calibrated: 2023-11-17
- Phantom: Twin-SAM V4.0 (30deg probe tilt); Serial: 1488; Section: Flat
- Measurement Software: 16.2.4.2524
- UID: CW

**Pin=17.0dBm/Area Scan (40.0 mm x 80.0 mm):** Measurement Grid: 10.0 mm x 10.0 mm

SAR (1g) = 3.16 W/kg; SAR (10g) = 0.951 W/kg;

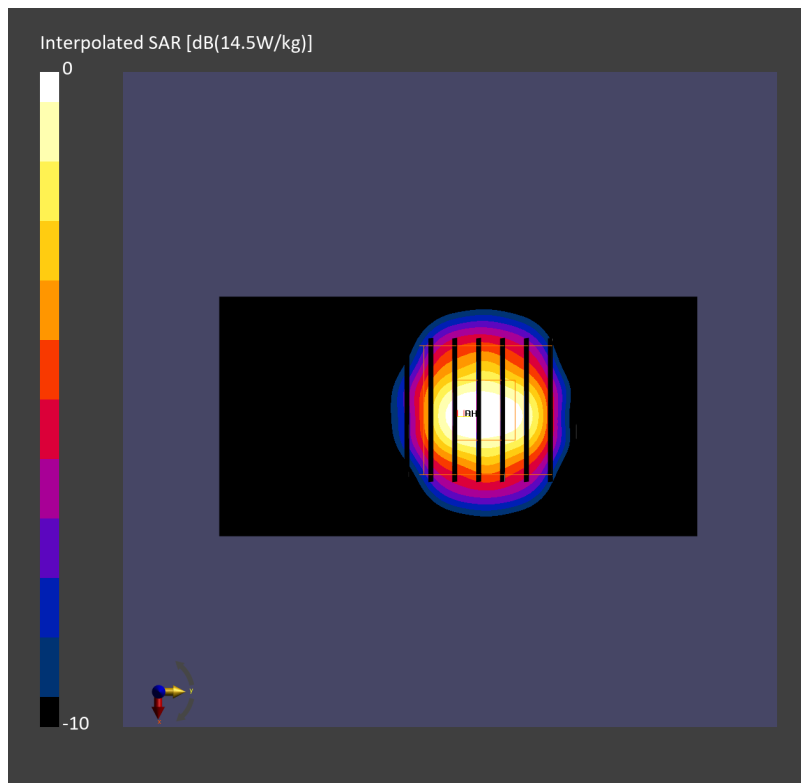
**Pin=17.0dBm/Zoom Scan (22.0 mm x 22.0 mm x 22.0 mm):** Measurement Grid: 4.0 mm x 4.0 mm x 1.4 mm

Power Drift = 0.10 dB

SAR (1g) = 3.70 W/kg; SAR (8g) = 1.24 W/kg; SAR (10g) = 1.06 W/kg

Smallest distance from peaks to all points 3 dB below = 7.2 mm

Ratio of SAR at M2 to SAR at M1 = 64.2 %



## System Check\_Head\_5600MHz

### DUT: D5GHzV2 - SN1006

Communication System: CW; Frequency: 5600.000 MHz; Duty Cycle: 1:1

Medium: HSL\_5G\_240221 Medium parameters used:  $f = 5600.000$  MHz;  $\sigma = 4.95$  S/m;  $\epsilon_r = 36.3$

Ambient Temperature: 23.5°C; Liquid Temperature: 22.5°C

#### DASY6 Configuration:

- Probe: EX3DV4 - SN7625; ConvF(4.87, 4.87, 4.87); Calibrated: 2023-12-14
- Sensor-Surface: 1.4 mm
- Electronics: DAE4 Sn1694; Calibrated: 2023-11-17
- Phantom: Twin-SAM V4.0 (30deg probe tilt); Serial: 1488; Section: Flat
- Measurement Software: 16.2.4.2524
- UID: CW

**Pin=17.0dBm/Area Scan (40.0 mm x 80.0 mm):** Measurement Grid: 10.0 mm x 10.0 mm

SAR (1g) = 3.76 W/kg; SAR (10g) = 1.12 W/kg;

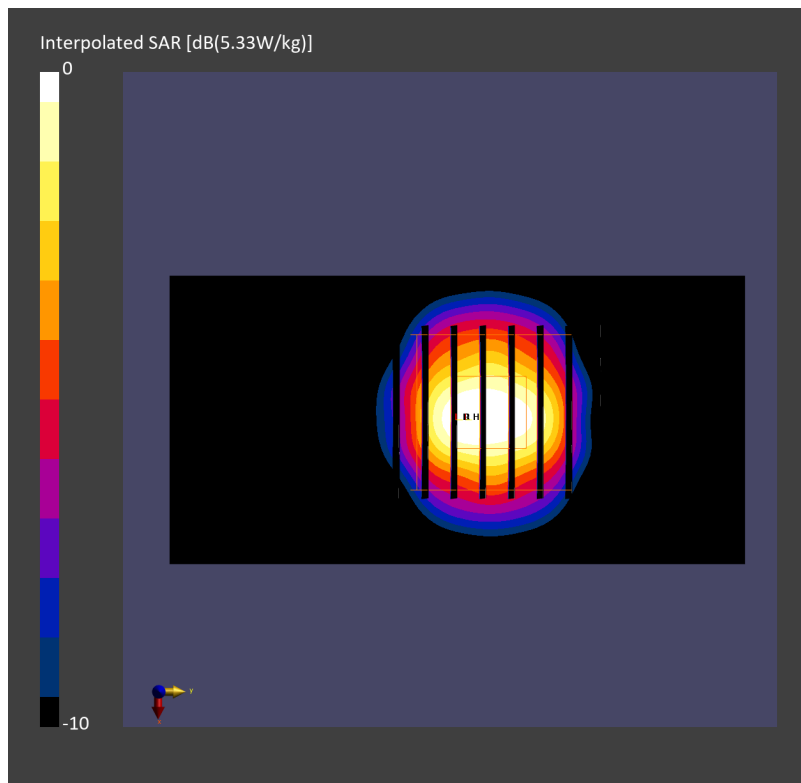
**Pin=17.0dBm/Zoom Scan (22.0 mm x 22.0 mm x 22.0 mm):** Measurement Grid: 4.0 mm x 4.0 mm x 1.4 mm

Power Drift = 0.01 dB

SAR (1g) = 4.25 W/kg; SAR (8g) = 1.41 W/kg; SAR (10g) = 1.21 W/kg

Smallest distance from peaks to all points 3 dB below = 7.2 mm

Ratio of SAR at M2 to SAR at M1 = 60.3 %



## System Check\_Head\_5750MHz

### DUT: D5GHzV2 - SN1006

Communication System: CW; Frequency: 5750.000 MHz; Duty Cycle: 1:1

Medium: HSL\_5G\_240221 Medium parameters used:  $f = 5750.000$  MHz;  $\sigma = 5.10$  S/m;  $\epsilon_r = 36.2$

Ambient Temperature: 23.5°C; Liquid Temperature: 22.5°C

#### DASY6 Configuration:

- Probe: EX3DV4 - SN7625; ConvF(4.96, 4.96, 4.96); Calibrated: 2023-12-14
- Sensor-Surface: 1.4 mm
- Electronics: DAE4 Sn1694; Calibrated: 2023-11-17
- Phantom: Twin-SAM V4.0 (30deg probe tilt); Serial: 1488; Section: Flat
- Measurement Software: 16.2.4.2524
- UID: CW

**Pin=17.0dBm/Area Scan (40.0 mm x 80.0 mm):** Measurement Grid: 10.0 mm x 10.0 mm

SAR (1g) = 3.65 W/kg; SAR (10g) = 1.04 W/kg;

**Pin=17.0dBm/Zoom Scan (22.0 mm x 22.0 mm x 22.0 mm):** Measurement Grid: 4.0 mm x 4.0 mm x 1.4 mm

Power Drift = -0.01 dB

SAR (1g) = 4.09 W/kg; SAR (8g) = 1.32 W/kg; SAR (10g) = 1.13 W/kg

Smallest distance from peaks to all points 3 dB below = 6.9 mm

Ratio of SAR at M2 to SAR at M1 = 59.7 %

