

01_WLAN6GHz_802.11ax-HE160 MCS0_Right Cheek_0mm_Ch207

Communication System: U-NII-8; Frequency: 6985.0

Medium: HSL. Medium parameters used: $f= 6985.0$ MHz; $\sigma= 6.64$ S/m; $\epsilon_r = 33.68$

Ambient Temperature: 23.3°C; Liquid Temperature: 22.6°C

DASY6 Configuration:

- Probe: EX3DV4 - SN3857; ConvF(5.55, 5.55, 5.55); Calibrated: 2022-12-14
- Sensor-Surface: 1.4 mm
- Electronics: DAE4 Sn690; Calibrated: 2022-06-15
- Phantom: Twin-SAM V8.0 (30deg probe tilt); Serial: 1644; Section: RightHead
- Measurement Software: cDASY6 V6.6.0.13926
- UID: WLAN, 10743-AAC

Area Scan (119.0 mm x 204.0 mm): Measurement Grid: 8.5 mm x 8.5 mm

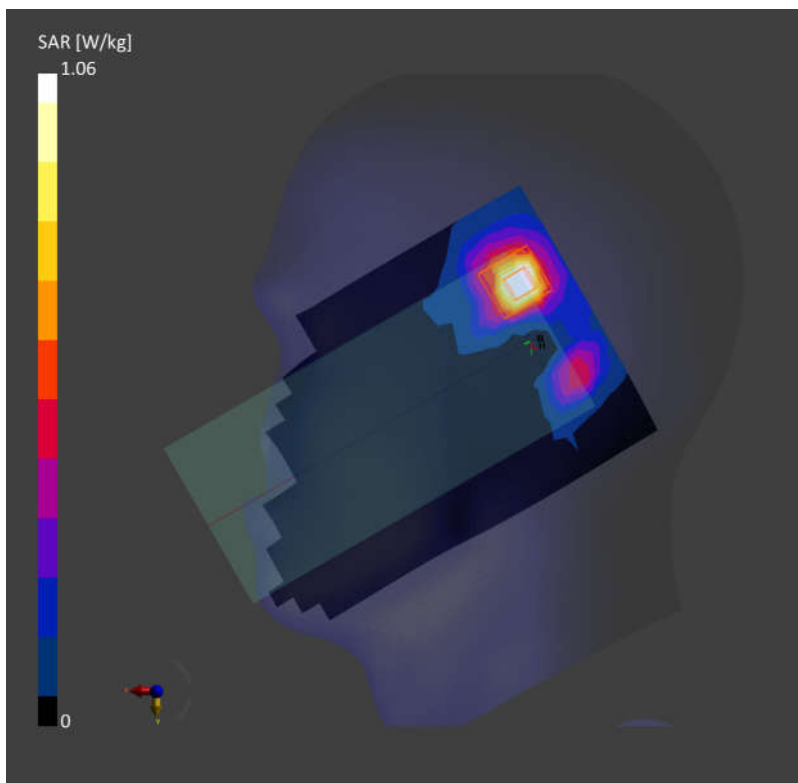
SAR (1g) = 1.01 W/kg; SAR (10g) = 0.351 W/kg;

Zoom Scan (22.0 mm x 22.0 mm x 22.0 mm): Measurement Grid: 3.4 mm x 3.4 mm x 1.4 mm

Power Drift = 0.04 dB

SAR (1g) = 1.06 W/kg; SAR (10g) = 0.346 W/kg;

psAPD (4.0cm², sq) = 7.89 [W/m²];



02_WLAN6GHz_802.11ax-HE160 MCS0_Back_15mm_Ch207

Communication System: U-NII-8; Frequency: 6985.0

Medium: HSL. Medium parameters used: $f= 6985.0$ MHz; $\sigma= 6.64$ S/m; $\epsilon_r = 33.68$

Ambient Temperature: 23.3°C; Liquid Temperature: 22.6°C

DASY6 Configuration:

- Probe: EX3DV4 - SN3857; ConvF(5.55, 5.55, 5.55); Calibrated: 2022-12-14
- Sensor-Surface: 1.4 mm
- Electronics: DAE4 Sn690; Calibrated: 2022-06-15
- Phantom: Twin-SAM V8.0 (30deg probe tilt); Serial: 1644; Section: Flat
- Measurement Software: cDASY6 V6.6.0.13926
- UID: WLAN, 10755-AAC

Area Scan (119.0 mm x 204.0 mm): Measurement Grid: 8.5 mm x 8.5 mm

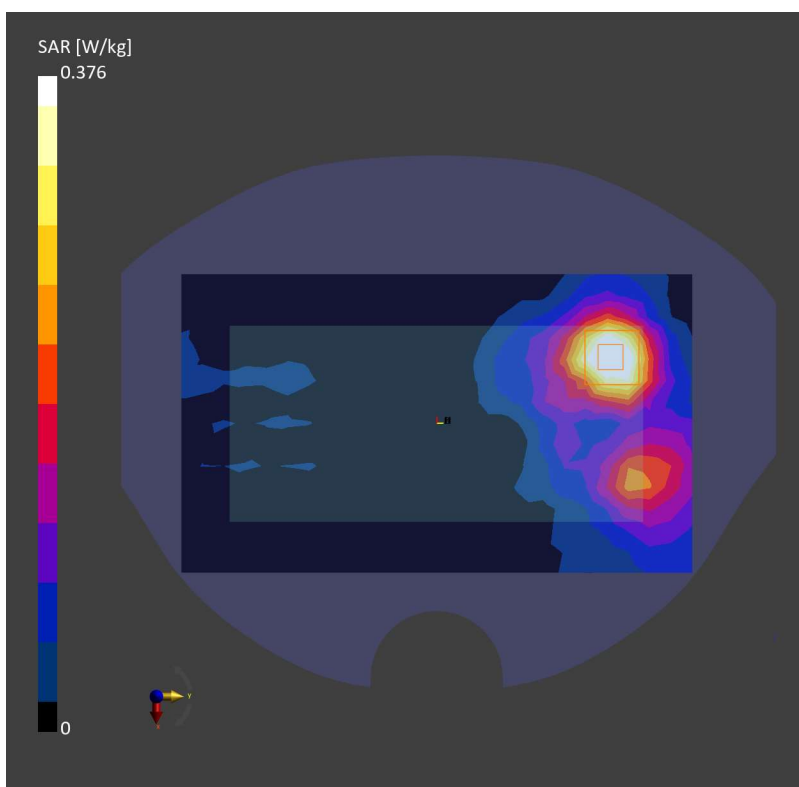
SAR (1g) = 0.391 W/kg; SAR (10g) = 0.151 W/kg;

Zoom Scan (22.0 mm x 22.0 mm x 22.0 mm): Measurement Grid: 3.4 mm x 3.4 mm x 1.4 mm

Power Drift = 0.08 dB

SAR (1g) = 0.376 W/kg; SAR (10g) = 0.148 W/kg;

psAPD (4.0cm², sq) = 3.31 [W/m²];



03_WLAN6GHz_802.11ax-HE160 MCS0_Back_0mm_Ch15

Communication System: U-NII-5; Frequency: 6025.0

Medium: HSL. Medium parameters used: $f= 6025.0$ MHz; $\sigma= 5.49$ S/m; $\epsilon_r = 35.26$

Ambient Temperature: 23.3°C; Liquid Temperature: 22.6°C

DASY6 Configuration:

- Probe: EX3DV4 - SN3857; ConvF(5.55, 5.55, 5.55); Calibrated: 2022-12-14
- Sensor-Surface: 1.4 mm
- Electronics: DAE4 Sn690; Calibrated: 2022-06-15
- Phantom: Twin-SAM V8.0 (30deg probe tilt); Serial: 1644; Section: Flat
- Measurement Software: cDASY6 V6.6.0.13926
- UID: WLAN, 10755-AAC

Area Scan (119.0 mm x 204.0 mm): Measurement Grid: 8.5 mm x 8.5 mm

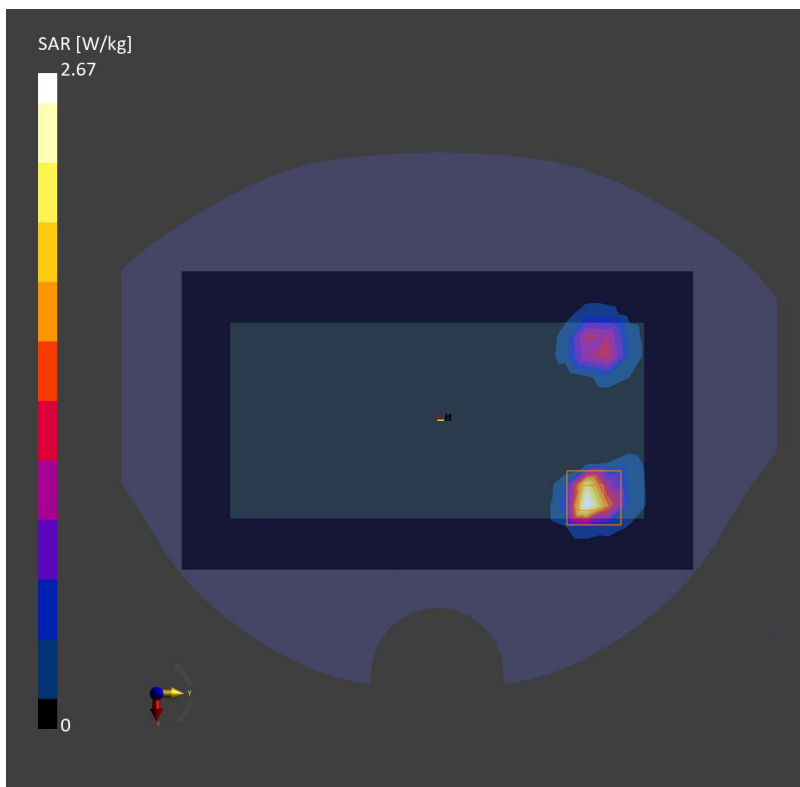
SAR (1g) = 1.94 W/kg; SAR (10g) = 0.507 W/kg;

Zoom Scan (22.0 mm x 22.0 mm x 22.0 mm): Measurement Grid: 3.4 mm x 3.4 mm x 1.4 mm

Power Drift = 0.02 dB

SAR (1g) = 2.67 W/kg; SAR (10g) = 0.612 W/kg;

psAPD (4.0cm², sq) = 14.6 [W/m²];



Device Under Test Properties

Model, Manufacturer	Dimensions [mm]	IMEI	DUT Type
Device,	166.0 x 76.0 x 18.0		Phone

Exposure Conditions

Phantom Section	Position, Test Distance [mm]	Band	Group, UID	Frequency [MHz], Channel Number	Conversion Factor
5G	FRONT, 2.00	U-NII-7	WLAN, 10743-AAC	6665.0, 143	1.0

Hardware Setup

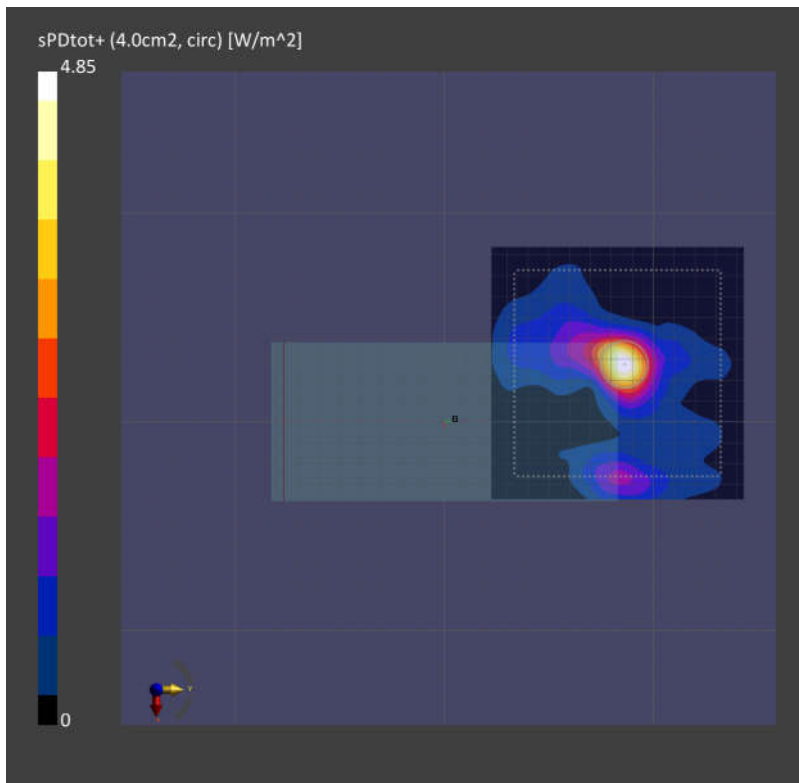
Phantom	Medium	Probe, Calibration Date	DAE, Calibration Date
mmWave - 1065	Air -	EUmmWV4 - SN9553_F1-55GHz, 2022-09-09	DAE4 Sn690, 2022-06-15

Scans Setup

Scan Type	5G Scan
Grid Extents [mm]	120.0 x 120.0
Grid Steps [lambda]	0.0625 x 0.0625
Sensor Surface [mm]	2.0
MAIA	N/A

Measurement Results

Scan Type	5G Scan
Date	2023-02-15
Avg. Area [cm ²]	4.00
psPDn+ [W/m ²]	3.08
psPDtot+ [W/m ²]	4.85
psPDmod+ [W/m ²]	7.62
E _{max} [V/m]	68.6
Power Drift [dB]	-0.08



02_WLAN6GHz_802.11ax-HE160 MCS0_Back_2mm_Ch175

Device UnderTest Properties

Model, Manufacturer	Dimensions [mm]	IMEI	DUT Type
Device,	166.0 x 76.0 x 18.0		Phone

Exposure Conditions

Phantom Section	Position, Test Distance [mm]	Band	Group, UID	Frequency [MHz], Channel Number	Conversion Factor
5G	BACK, 2.00	U-NII-7	WLAN, 10743-AAC	6825.0, 175	1.0

Hardware Setup

Phantom	Medium	Probe, Calibration Date	DAE, Calibration Date
mmWave - 1065	Air -	EUmmWV4 - SN9553_F1-55GHz, 2022-09-09	DAE4 Sn690, 2022-06-15

Scans Setup

Scan Type	5G Scan
Grid Extents [mm]	120.0 x 120.0
Grid Steps [lambda]	0.0625 x 0.0625
Sensor Surface [mm]	2.0
MAIA	N/A

Measurement Results

Scan Type	5G Scan
Date	2023-02-15
Avg. Area [cm ²]	4.00
psPDn+ [W/m ²]	4.32
psPDtot+ [W/m ²]	4.72
psPDmod+ [W/m ²]	5.81
E _{max} [V/m]	59.2
Power Drift [dB]	-0.02

