

System Check_2600MHz

D2600V2-SN:1070

Communication System: D2600; Frequency: 2600.0

Medium: HSL. Medium parameters used: $f= 2600.0$ MHz; $\sigma= 1.98$ S/m; $\epsilon_r = 37.9$

Ambient Temperature: 23.2°C; Liquid Temperature: 22.3°C

DASY6 Configuration:

- Probe: EX3DV4 - SN3826; ConvF(7.35, 7.35, 7.35); Calibrated: 2022/8/8
- Sensor-Surface: 1.4 mm
- Electronics: DAE4 Sn715; Calibrated: 2023/1/23
- Phantom: Twin-SAM V5.0 (30deg probe tilt); Serial: 1670; Section: Flat
- Measurement Software: cDASY6 V16.0.0.116
- UID: CW, 0--
- MAIA: Area Scan: N/A; Zoom Scan: N/A

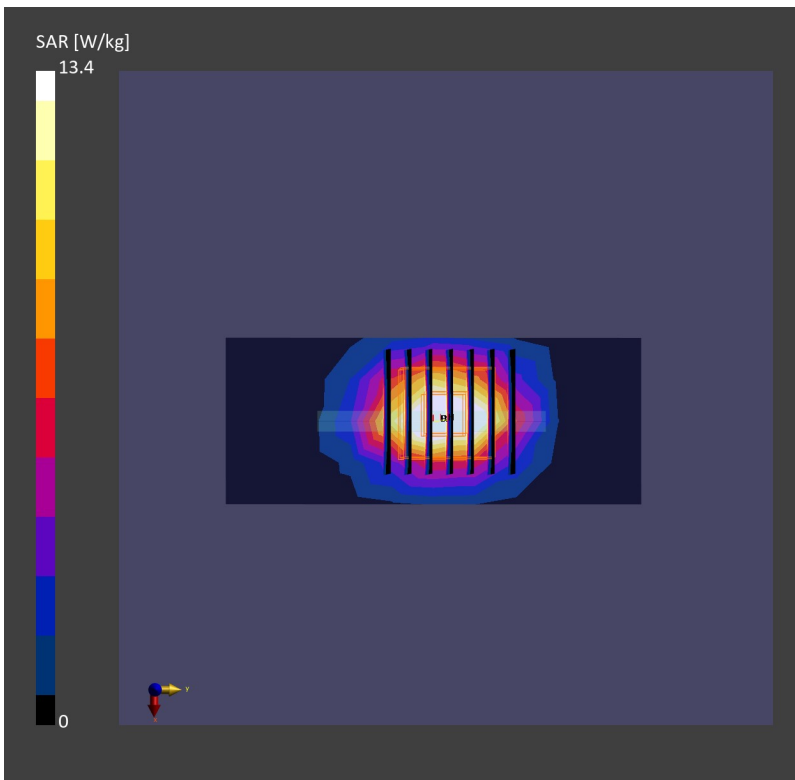
Area Scan (40.0 mm x 100.0 mm): Measurement Grid: 10.0 mm x 10.0 mm

SAR (1g) = 13.3 W/kg; SAR (10g) = 6.04 W/kg;

Zoom Scan (30.0 mm x 30.0 mm x 30.0 mm): Measurement Grid: 5.0 mm x 5.0 mm x 1.5 mm

Power Drift = 0.02 dB

SAR (1g) = 13.4 W/kg; SAR (10g) = 6.15 W/kg;



System Check_3500MHz

D3500V2-SN:1076

Communication System: D3500; Frequency: 3500.0

Medium: HSL. Medium parameters used: $f= 3500.0$ MHz; $\sigma= 2.96$ S/m; $\epsilon_r = 38.9$

Ambient Temperature: 23.4°C; Liquid Temperature: 22.5°C

DASY6 Configuration:

- Probe: EX3DV4 - SN3826; ConvF(7.05, 7.05, 7.05); Calibrated: 2022/8/8
- Sensor-Surface: 1.4 mm
- Electronics: DAE4 Sn715; Calibrated: 2023/1/23
- Phantom: Twin-SAM V5.0 (30deg probe tilt); Serial: 1670; Section: Flat
- Measurement Software: cDASY6 V16.0.0.116
- UID: CW, 0--
- MAIA: Area Scan: N/A; Zoom Scan: N/A

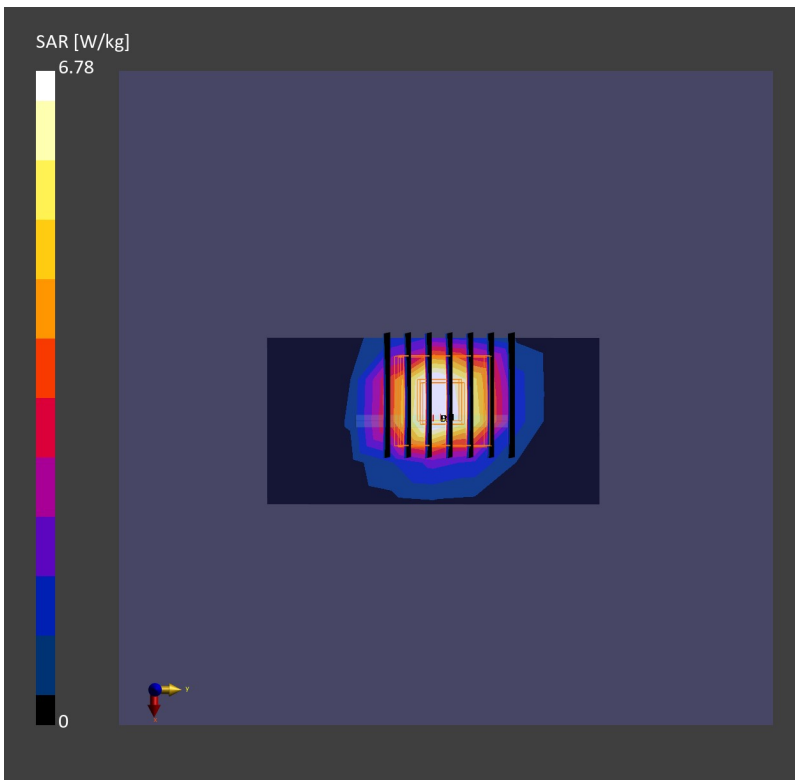
Area Scan (40.0 mm x 80.0 mm): Measurement Grid: 10.0 mm x 10.0 mm

SAR (1g) = 6.14 W/kg; SAR (10g) = 2.53 W/kg;

Zoom Scan (28.0 mm x 28.0 mm x 28.0 mm): Measurement Grid: 5.0 mm x 5.0 mm x 1.4 mm

Power Drift = 0.01 dB

SAR (1g) = 6.78 W/kg; SAR (10g) = 2.59 W/kg;



System Check_3700MHz

D3700V2-SN:1037

Communication System: D3700; Frequency: 3700.0

Medium: HSL. Medium parameters used: $f=3700.0$ MHz; $\sigma=3.01$ S/m; $\epsilon_r=38.8$

Ambient Temperature: 23.5°C; Liquid Temperature: 22.4°C

DASY6 Configuration:

- Probe: EX3DV4 - SN3826; ConvF(6.98, 6.98, 6.98); Calibrated: 2022/8/8
- Sensor-Surface: 1.4 mm
- Electronics: DAE4 Sn715; Calibrated: 2023/1/23
- Phantom: Twin-SAM V5.0 (30deg probe tilt); Serial: 1670; Section: Flat
- Measurement Software: cDASY6 V16.0.0.116
- UID: CW, 0--
- MAIA: Area Scan: N/A; Zoom Scan: N/A

Area Scan (40.0 mm x 80.0 mm): Measurement Grid: 10.0 mm x 10.0 mm

SAR (1g) = 6.31 W/kg; SAR (10g) = 2.47 W/kg;

Zoom Scan (28.0 mm x 28.0 mm x 28.0 mm): Measurement Grid: 5.0 mm x 5.0 mm x 1.4 mm

Power Drift = 0.01 dB

SAR (1g) = 6.98 W/kg; SAR (10g) = 2.61 W/kg;

