



ZEBRA

2023/04/04

ZEBRA and the stylized Zebra head are trademarks of Zebra Technologies Corporation, registered in many jurisdictions worldwide. All other trademarks are the property of their respective owners. ©2023 Zebra Technologies Corporation and/or its affiliates. All rights reserved.

Information in this document is subject to change without notice. The software described in this document is furnished under a license agreement or nondisclosure agreement. The software may be used or copied only in accordance with the terms of those agreements.

For further information regarding legal and proprietary statements, please go to:

SOFTWARE: zebra.com/linkoslegal.

COPYRIGHTS: zebra.com/copyright.

PATENTS: ip.zebra.com.

WARRANTY: zebra.com/warranty.

END USER LICENSE AGREEMENT: zebra.com/eula.

Terms of Use

Proprietary Statement

This manual contains proprietary information of Zebra Technologies Corporation and its subsidiaries ("Zebra Technologies"). It is intended solely for the information and use of parties operating and maintaining the equipment described herein. Such proprietary information may not be used, reproduced, or disclosed to any other parties for any other purpose without the express, written permission of Zebra Technologies.

Product Improvements

Continuous improvement of products is a policy of Zebra Technologies. All specifications and designs are subject to change without notice.

Liability Disclaimer

Zebra Technologies takes steps to ensure that its published Engineering specifications and manuals are correct; however, errors do occur. Zebra Technologies reserves the right to correct any such errors and disclaims liability resulting therefrom.

Limitation of Liability

In no event shall Zebra Technologies or anyone else involved in the creation, production, or delivery of the accompanying product (including hardware and software) be liable for any damages whatsoever (including, without limitation, consequential damages including loss of business profits, business interruption, or loss of business information) arising out of the use of, the results of use of, or inability to use such product, even if Zebra Technologies has been advised of the possibility of such damages. Some jurisdictions do not allow the exclusion or limitation of incidental or consequential damages, so the above limitation or exclusion may not apply to you.

Unpacking

1. Carefully remove all protective material from the device and save the shipping container for later storage and shipping.
2. Verify that the following were received:
 - Touch computer
 - PowerPrecision Lithium-ion battery
 - Regulatory Guide.
3. Inspect the equipment for damage. If any equipment is missing or damaged, contact the Global Customer Support center immediately.
4. Prior to using the device for the first time, remove the protective shipping film that covers the scan window, display and camera window.

Figure 1 Front View

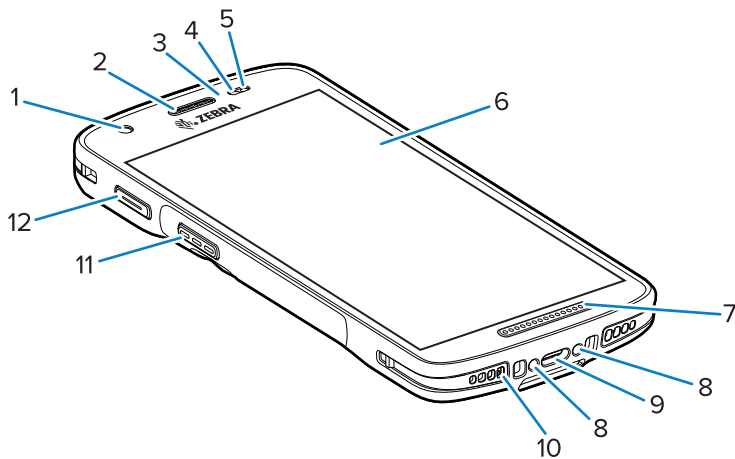


Table 1 Front View Features

| Number | Item | Function |
|--------|--------------|---|
| 1 | Front Camera | Takes photos and videos (available on some models). |

Table 1 Front View Features (Continued)

| Number | Item | Function |
|--------|---------------------------|--|
| 2 | Receiver | Use for audio playback in Handset mode. |
| 3 | Proximity/Light Sensor | Determines proximity for turning off display when in handset mode. Determines ambient light for controlling display backlight intensity. |
| 4 | Data Capture LED | Indicates data capture status. |
| 5 | Charging/Notification LED | Indicates battery charging status while charging and application generated notifications. |
| 6 | Touch Screen | Displays all information needed to operate the device. |
| 7 | Speaker | Provides audio output for video and music playback. Provides audio in speakerphone mode. |
| 8 | Cradle Charging Contacts | Provides device charging via cradles and accessories. |
| 9 | USB-C Connector | Provides USB host and client communications, and device charging via cables and accessories. |
| 10 | Microphone | Use for communications in Handset mode. |
| 11 | Programmable Button | Typically used for Push-to-Talk communications. Where regulatory restrictions exist ¹ for Push-to-Talk VoIP communication, this button is configurable for use with other applications. |
| 12 | Scan Button | Initiates data capture (programmable). |

Figure 2 Rear View

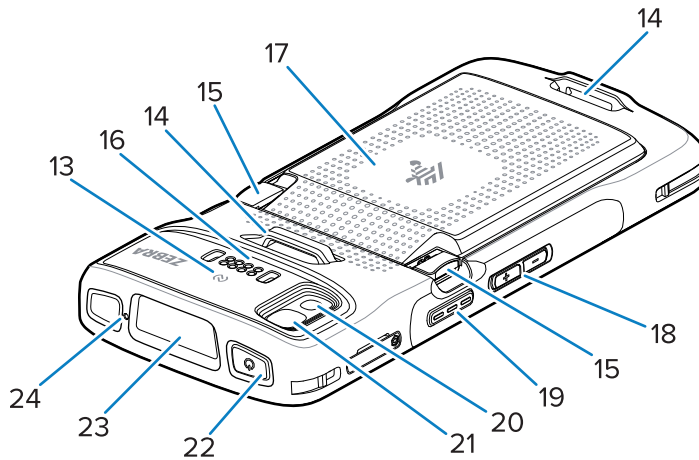


Table 2 Rear View Features

| Number | Item | Function |
|--------|-------------------------|---|
| 13 | NFC Antenna | Provides communication with other NFC-enabled devices. |
| 14 | Basic Hand Strap Mount | Provides mounting point for Basic Hand Strap accessory. |
| 15 | Battery Release Latches | Press to remove the battery. |
| 16 | Alert Button | Red alert button (available on healthcare devices only). |
| 17 | Battery | Standard - 3,400 mAh (typical) / 3,300 mAh (minimum) PowerPrecision Lithium-ion Battery Extended - 5,260 mAh (typical) / 5,000 mAh (minimum) PowerPrecision Lithium-ion Battery |
| 18 | Volume Up/Down Button | Increase and decrease audio volume (programmable). |
| 19 | Scan Button | Initiates data capture (programmable). |
| 20 | Camera Flash | Provides illumination for the camera. |
| 21 | Rear Camera | Takes photos and videos. |
| 22 | Power Button | Turns the display on and off. Press and hold to reset the device or power off. |
| 23 | Exit Window | Provides data capture using the imager. |
| 24 | Microphone | Use for communications in Speakerphone mode. |

To start using the device for the first time.

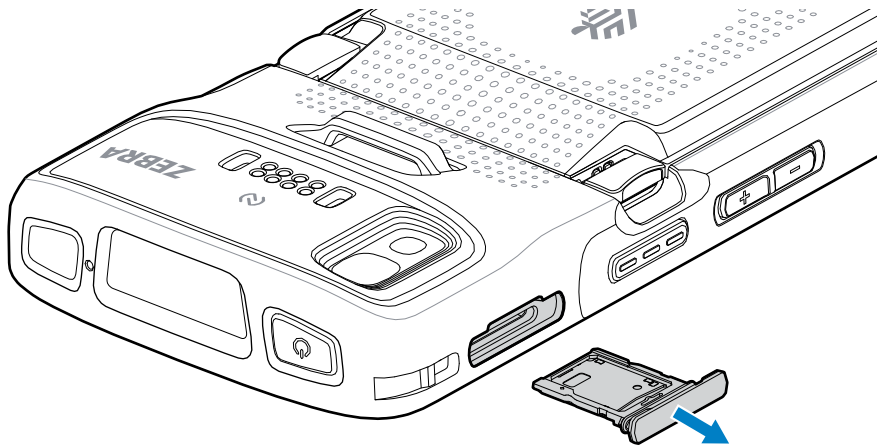
1. Install a micro secure digital (SD) card (optional).
2. Installing a nano SIM card (optional)
3. Install hand strap (optional).
4. Install the battery.
5. Charge the device.
6. Power on the device.

Installing a microSD Card

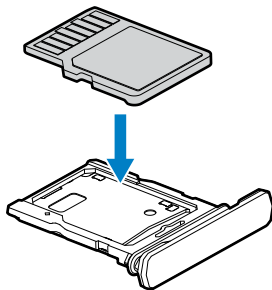


CAUTION: Follow proper electrostatic discharge (ESD) precautions to avoid damaging the microSD card. Proper ESD precautions include, but are not limited to, working on an ESD mat and ensuring that the operator is properly grounded.

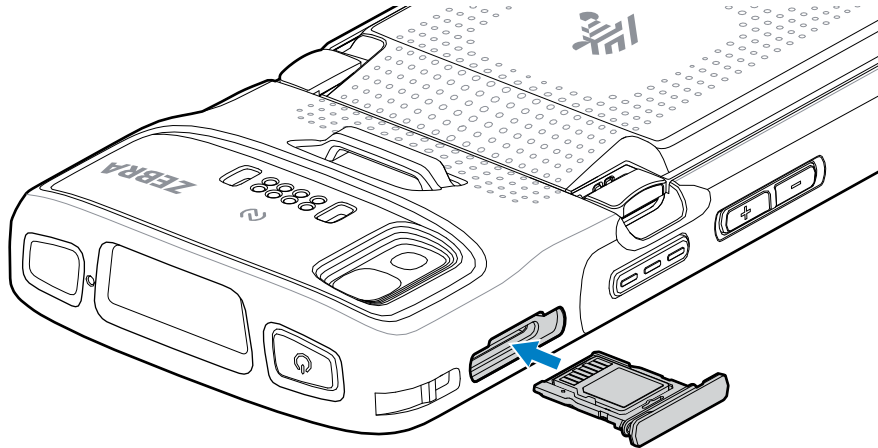
1. Pull microSD card holder out of the device.



2. Place the microSD card in holder.



3. Re-install the card holder.



Installing the SIM Card

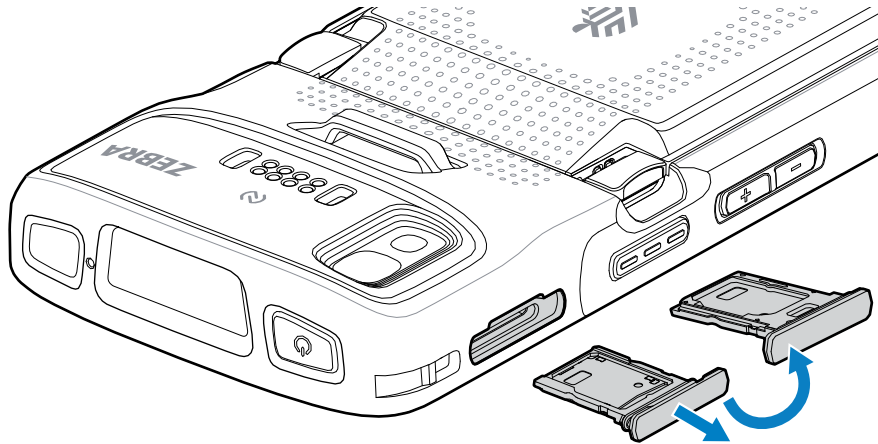


NOTE: Only use a nano SIM card.

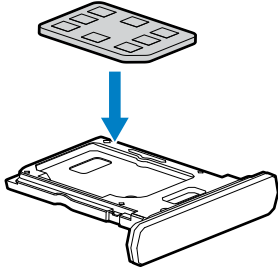


CAUTION: For proper electrostatic discharge (ESD) precautions to avoid damaging the SIM card. Proper ESD precautions include, but not limited to, working on an ESD mat and ensuring that the user is properly grounded.

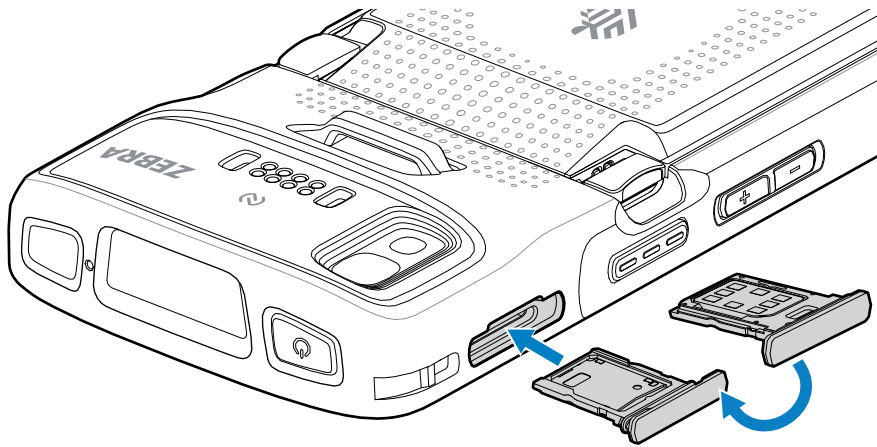
1. Pull the SIM card holder out of the device.



2. Place the SIM card into holder.



3. Re-install the card holder.



Installing the Battery

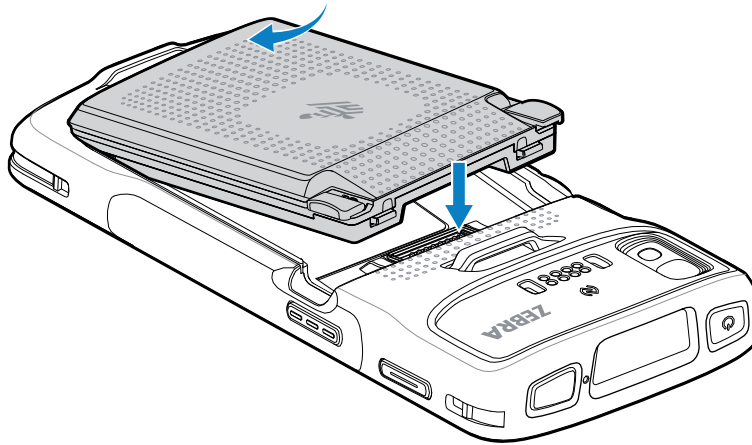


NOTE: User modification of the device, particularly in the battery well, such as labels, asset tags, engravings, stickers may compromise the intended performance of the device or accessories. Performance levels such as sealing (Ingress Protection (IP)), impact performance (drop and tumble), functionality, temperature resistance could be effected. **DO NOT** put any labels, asset tags, engravings, stickers in the battery well.

Charging the Device

1. Insert the battery, bottom first, into the battery compartment in the back of the device.

Figure 3



2. Press the battery down into the battery compartment until the battery release latches snap into place.



CAUTION: Ensure that you follow the guidelines for battery safety described in the device Product Reference Guide.

Use one of the following accessories to charge the device and/or spare battery.

Table 3 Accessories

| Accessory | Part Number | Description |
|----------------------------|-------------------|--|
| 1-Slot Charge Only Cradle | CRD-TC2L-BS1CO-01 | Provides device charging only. Requires USB-C cable (CBL-TC5X-USBC2A-01) and power supply (PWR-WUA5V12W0xx). |
| 1-Slot USB/Ethernet Cradle | CRD-TC2L-SE1ET-01 | Provides device charging and communication, and charging for Extended Power Pack. Requires power supply (PWR-BGA12V50W0WW), DC line cord (CBL-DC-388A1-01), and country-specific AC line cord. |
| 4-Slot Battery Charger | SAC-TC2L-4SCHG-01 | Charges up to four battery packs. Requires power supply (PWR-BGA12V50W0WW), DC line cord (CBL-DC-388A1-01), and country-specific AC line cord. |
| 5-Slot Charge Only Cradle | CRD-TC2L-BS5CO-01 | Charges up to five devices. Charges up to four devices and four spare batteries. Requires power supply (PWR-BGA12V108W0WW), DC line cord (CBL-DC-381A1-01), and country-specific AC line cord. |

Table 3 Accessories (Continued)

| Accessory | Part Number | Description |
|------------------------|-------------------|--|
| 5-Slot Ethernet Cradle | CRD-TC2L-SE5ET-01 | Provides device charging and provides Ethernet communication for up to five devices. Requires power supply (PWR-BGA12V108W0WW), DC line cord (CBL-DC-381A1-01), and country-specific AC line cord. |

Main Battery Charging

Before using the device for the first time, charge the main battery until the green Charging/Notification light-emitting diode (LED) remains lit. To charge the device, use a cable or a cradle with the appropriate power supply.

The device's Charging/Notification LED indicates the status of the battery charging in the device. The standard battery charges from fully depleted to 90% in approximately three hours. The extended battery charges from fully depleted to 90% in approximately four hours.



NOTE: In many cases, the 90% charge provides plenty of charge for daily use.

To achieve the best fast charging results use only Zebra charging accessories and batteries. Charge batteries at room temperature with the device in Sleep mode.

Table 4 Charging/Notification LED Charging Indicators

| State | Indication |
|---|---|
| Off | Device is not charging. Device is not inserted correctly in the cradle or connected to a power source. Charger/cradle is not powered. |
| Slow Blinking Amber (1 blink every 4 seconds) | Device is charging. |
| Slow Blinking Red (1 blink every 4 seconds) | Device is charging but the battery is at end of useful life. |
| Solid Green | Charging complete. |

Spare Battery Charging

The Spare Battery Charging LEDs on the 4-Slot Battery Charger indicate the status of the spare battery charging. The standard battery charges from fully depleted to 90% in approximately three hours. The extended battery charges from fully depleted to 90% in approximately four hours.

| LED | Indication |
|---|-------------------------------------|
| Solid Amber | Spare battery is charging. |
| Solid amber with alternate bright amber | Best spare battery is charging. |
| Solid Green | Spare battery charging is complete. |

| LED | Indication |
|---|---|
| Solid Green with alternate bright green | Best spare battery charging is complete. |
| Solid Red | Spare battery is charging and battery is at the end of useful life. Charging complete and battery is at the end of useful life. |
| Fast Blinking Red (2 blinks/second) | Error in charging; check placement of spare battery and battery is at the end of useful life. |
| Off | No spare battery in slot. Spare battery not placed in slot correctly. Cradle is not powered. |

Charging Temperature

Charge batteries in temperatures from 5°C to 40°C (41°F to 104°F). The device or cradle always performs battery charging in a safe and intelligent manner. At higher temperatures (for example: approximately +37°C (+98°F)) the device or cradle may for small periods of time alternately enable and disable battery charging to keep the battery at acceptable temperatures. The device and cradle indicates when charging is disabled due to abnormal temperatures via its LED.

1-Slot Charge Only Cradle

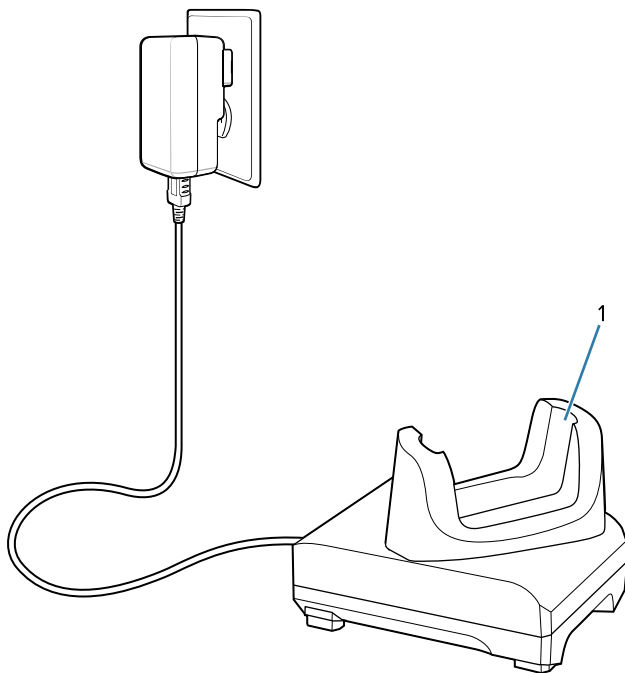


CAUTION: Ensure that you follow the guidelines for battery safety described in [Battery Safety Guidelines](#).

The 1-Slot Charge Only Cradle:

- Provides 5 VDC power for operating the device.
- Charges the device's battery.

Figure 4 1-Slot Charge Only Cradle Features



| | |
|---|----------------------|
| 1 | Device charging slot |
|---|----------------------|

1-Slot USB/Ethernet Cradle

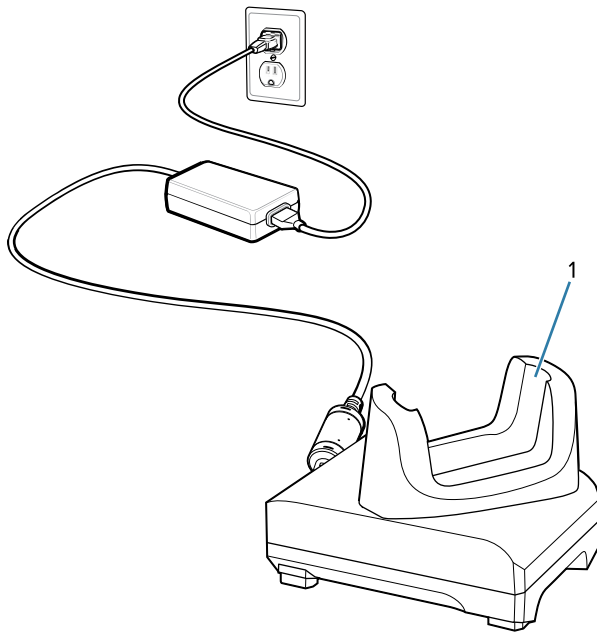


CAUTION: Ensure that you follow the guidelines for battery safety described in [Battery Safety Guidelines](#).

The 1-Slot Ethernet Charge Cradle:

- Provides 5 VDC power for operating the device.
- Charges the device's battery.
- Provides USB communication with host computer.
- Provides USB and Ethernet communication using the Ethernet Module adapter.

Figure 5 1-Slot USB/Ethernet Cradle Features



| | |
|---|----------------------|
| 1 | Device charging slot |
|---|----------------------|

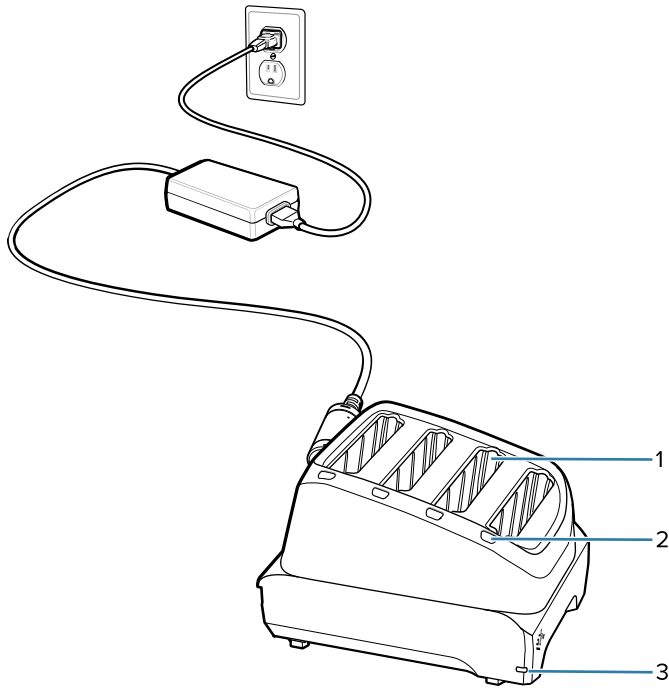
4-Slot Battery Charger

This section describes how to use the 4-Slot Battery Charger to charge up to four device batteries.



CAUTION: Ensure that you follow the guidelines for battery safety described in [Battery Safety Guidelines](#).

Figure 6 4-Slot Battery Charger



| | |
|---|----------------------|
| 1 | Battery Slot |
| 2 | Battery Charging LED |
| 3 | Power LED |

5-Slot Charge Only Cradle

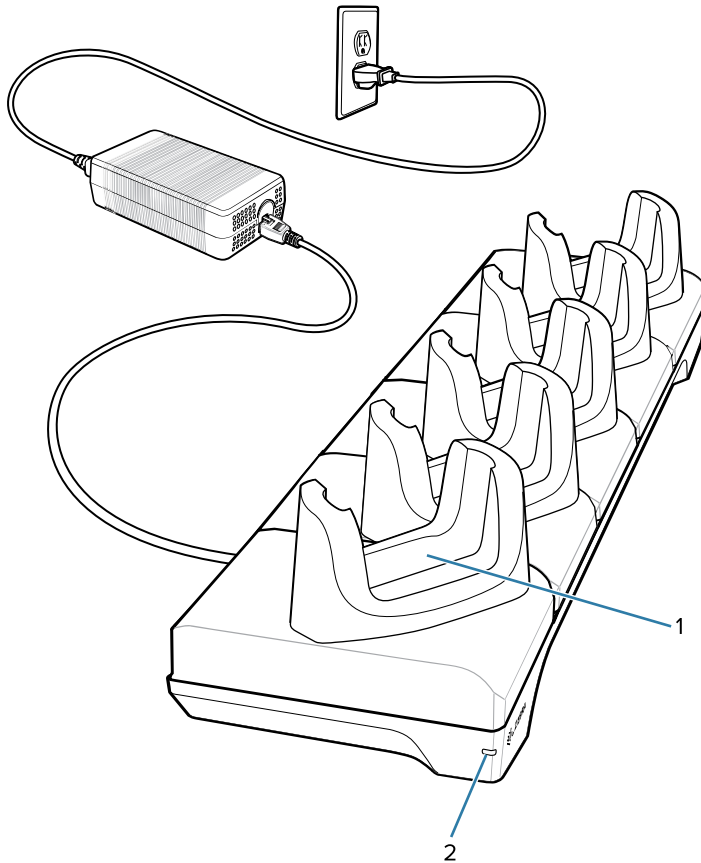


CAUTION: Ensure that you follow the guidelines for battery safety described in [Battery Safety Guidelines](#).

The 5-Slot Charge Only Cradle:

- Provides 5 VDC power for operating the device.
- Simultaneously charges up to five devices.

Figure 7 5-Slot Charge Only Cradle



| | |
|---|----------------------|
| 1 | Device Charging Slot |
| 2 | Power LED |

5-Slot Ethernet Cradle

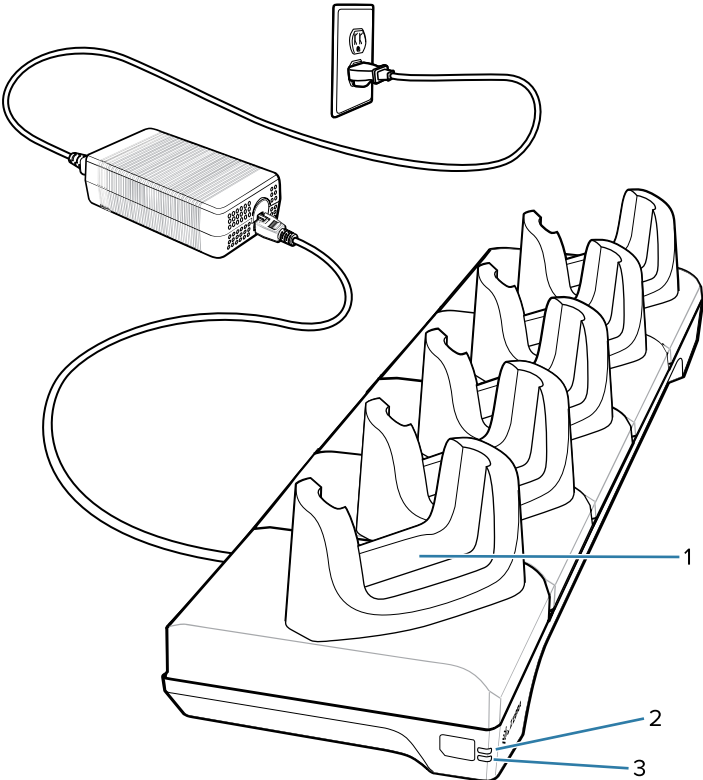


CAUTION: Ensure that you follow the guidelines for battery safety described in [Battery Safety Guidelines](#).

The 5-Slot Ethernet Cradle:

- Provides 5 VDC power for operating the device.
- Connects the device (up to five) to an Ethernet network.
- Simultaneously charges up to five devices.

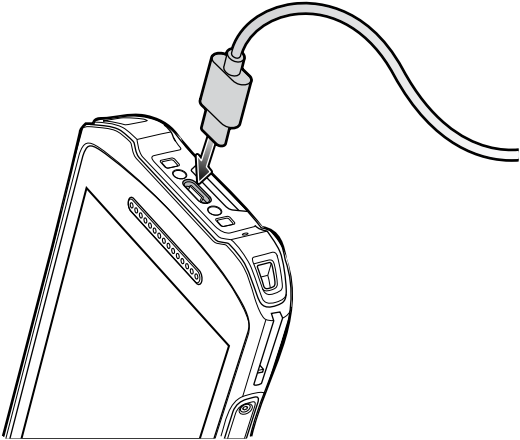
Figure 8 5-Slot Ethernet Cradle



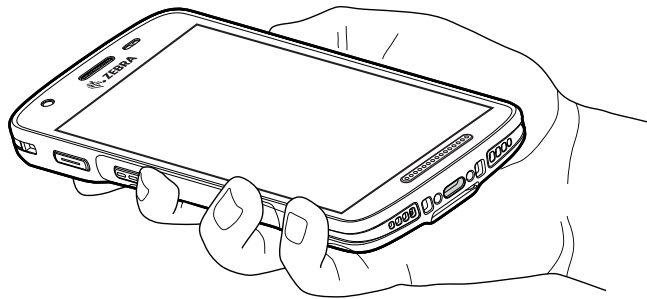
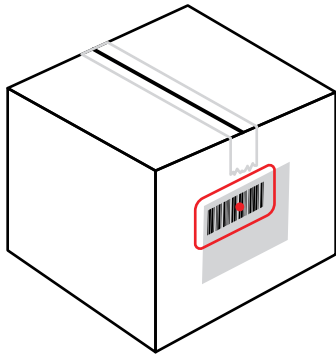
| | |
|---|----------------------|
| 1 | Device Charging Slot |
| 2 | 1000 LED |
| 3 | 100/100 LED |

The USB cable plugs into the bottom of the device. When attached to the device the cable allows charging, transferring data to a host computer, and connecting USB peripherals.

Figure 9 USB cable



1. Ensure that an application is open on the device and a text field is in focus (text cursor in text field).
2. Point the exit window of the device at a barcode.



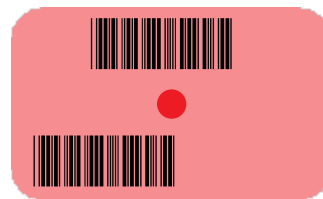
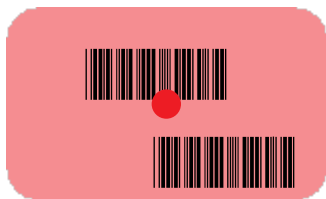
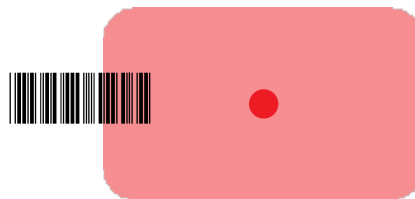
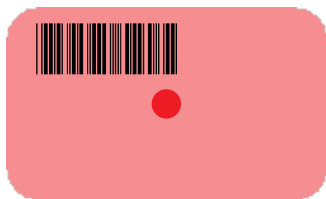
3. Press and hold the scan button.

The red laser aiming pattern turns on to assist in aiming.



NOTE: When the device is in Pick List Mode, the device does not decode the barcode until the center of the crosshair touches the barcode.

4. Ensure the barcode is within the area formed by the aiming pattern. The aiming dot is used for increased visibility in bright lighting conditions.



The Data Capture LED lights green and a beep sounds, by default, to indicate the barcode was decoded successfully.

5. Release the scan button.



NOTE: Imager decoding usually occurs instantaneously. The device repeats the steps required to take a digital picture (image) of a poor or difficult barcode as long as the scan button remains pressed.

The barcode content data displays in the text field.

Avoid extreme wrist angles such as these when using the device.

