

## System Check\_Body\_2450MHz\_150902

### DUT: D2450V2-735

Communication System: CW; Frequency: 2450 MHz; Duty Cycle: 1:1

Medium: MSL\_2450\_150902 Medium parameters used:  $f = 2450$  MHz;  $\sigma = 1.892$  S/m;  $\epsilon_r = 54.001$ ;  $\rho = 1000$  kg/m<sup>3</sup>

Ambient Temperature : 23.2 °C; Liquid Temperature : 22.2 °C

### DASY5 Configuration:

- Probe: EX3DV4 - SN3931; ConvF(7.36, 7.36, 7.36); Calibrated: 2014/9/25;
- Sensor-Surface: 1.4mm (Mechanical Surface Detection)
- Electronics: DAE3 Sn577; Calibrated: 2014/10/6
- Phantom: SAM-Right; Type: SAM; Serial: 1795
- Measurement SW: DASY52, Version 52.8 (8); SEMCAD X Version 14.6.10 (7331)

**Configuration/Pin=250mW/Area Scan (71x71x1):** Interpolated grid: dx=1.200 mm, dy=1.200 mm

Maximum value of SAR (interpolated) = 26.8 W/kg

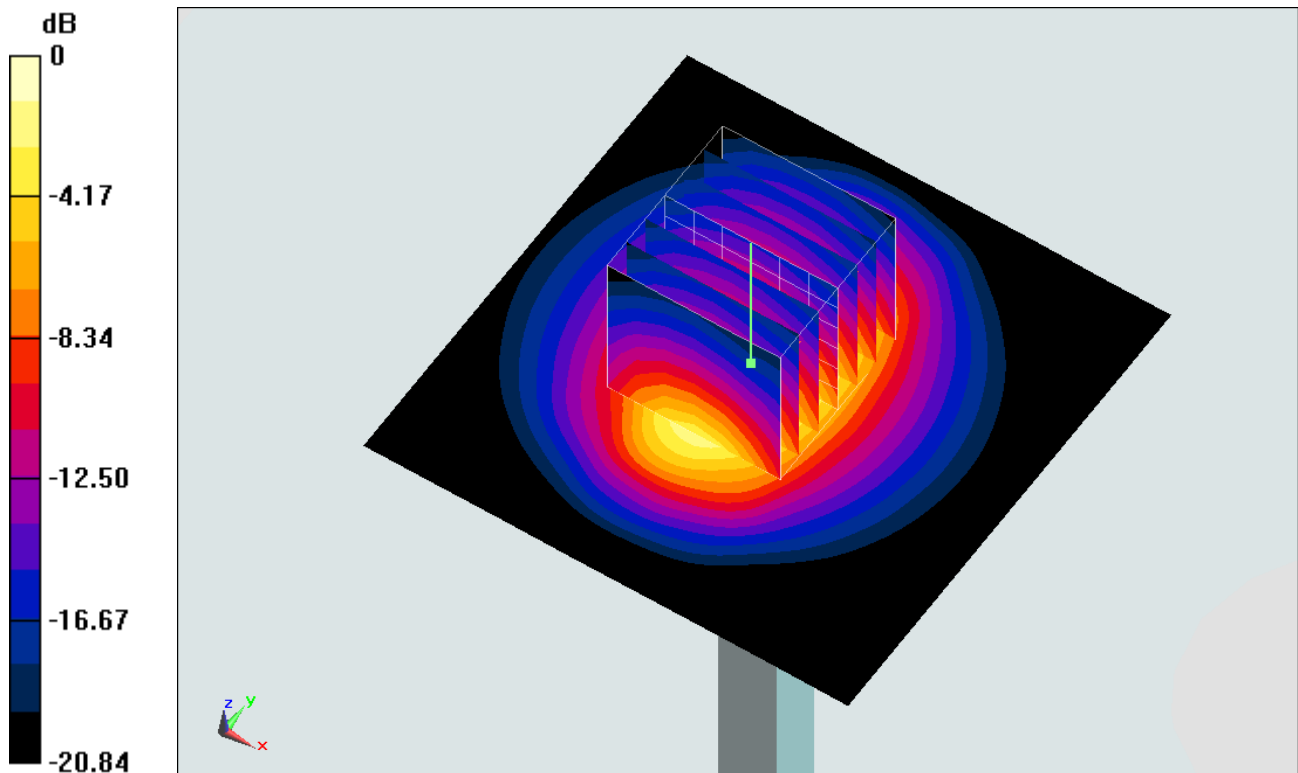
**Configuration/Pin=250mW/Zoom Scan (7x7x7)/Cube 0:** Measurement grid: dx=5mm, dy=5mm, dz=5mm

Reference Value = 117.9 V/m; Power Drift = -0.13 dB

Peak SAR (extrapolated) = 25.8 W/kg

**SAR(1 g) = 12.7 W/kg; SAR(10 g) = 5.93 W/kg**

Maximum value of SAR (measured) = 21.0 W/kg



0 dB = 21.0 W/kg = 13.22 dBW/kg

## System Check\_Body\_2450MHz\_151205

**DUT: D2450V2-SN:736**

Communication System: CW; Frequency: 2450 MHz; Duty Cycle: 1:1

Medium: MSL\_2450\_151205 Medium parameters used:  $f = 2450 \text{ MHz}$ ;  $\sigma = 1.95 \text{ mho/m}$ ;  $\epsilon_r = 52.3$ ;  $\rho = 1000 \text{ kg/m}^3$

Ambient Temperature :  $23.3 \text{ }^\circ\text{C}$ ; Liquid Temperature :  $22.3 \text{ }^\circ\text{C}$

DASY4 Configuration:

- Probe: EX3DV4 - SN3931; ConvF(7.54, 7.54, 7.54); Calibrated: 2015/10/1
- Sensor-Surface: 1.4mm (Mechanical Surface Detection)
- Electronics: DAE3 Sn577; Calibrated: 2015/9/24
- Phantom: SAM\_Right; Type: SAM; Serial: TP-1303
- ;Postprocessing SW: SEMCAD, V1.8 Build 159

**Pin=250mW/Area Scan (61x61x1):** Measurement grid:  $dx=12\text{mm}$ ,  $dy=12\text{mm}$

Maximum value of SAR (interpolated) =  $18.5 \text{ mW/g}$

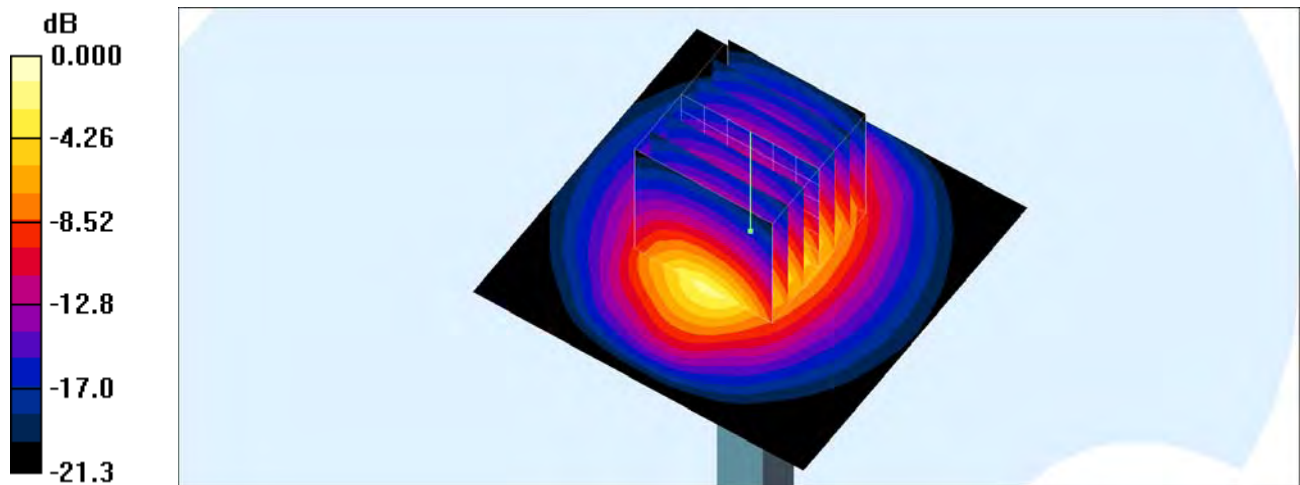
**Pin=250mW/Zoom Scan (7x7x7)/Cube 0:** Measurement grid:  $dx=5\text{mm}$ ,  $dy=5\text{mm}$ ,  $dz=5\text{mm}$

Reference Value =  $96.4 \text{ V/m}$ ; Power Drift =  $0.051 \text{ dB}$

Peak SAR (extrapolated) =  $24.4 \text{ W/kg}$

**SAR(1 g) =  $12.1 \text{ mW/g}$ ; SAR(10 g) =  $5.66 \text{ mW/g}$**

Maximum value of SAR (measured) =  $18.3 \text{ mW/g}$



0 dB =  $18.3\text{mW/g}$

## System Check\_Body\_5300MHz\_150902

### DUT: D5GHzV2-1006-5300

Communication System: CW; Frequency: 5300 MHz; Duty Cycle: 1:1

Medium: MSL\_5G\_150902 Medium parameters used:  $f = 5300$  MHz;  $\sigma = 5.528$  S/m;  $\epsilon_r = 47.83$ ;  $\rho = 1000$  kg/m<sup>3</sup>

Ambient Temperature : 23.2 °C; Liquid Temperature : 22.2 °C

#### DASY5 Configuration:

- Probe: EX3DV4 - SN3954; ConvF(4.15, 4.15, 4.15); Calibrated: 2014/11/21;
- Sensor-Surface: 1.4mm (Mechanical Surface Detection)
- Electronics: DAE4 Sn1279; Calibrated: 2015/7/21
- Phantom: SAM\_Left; Type: QD000P40CD; Serial: TP:1644
- Measurement SW: DASY52, Version 52.8 (8); SEMCAD X Version 14.6.10 (7331)

**Configuration/Pin=100mW/Area Scan (71x71x1):** Interpolated grid: dx=1.000 mm, dy=1.000 mm

Maximum value of SAR (interpolated) = 18.7 W/kg

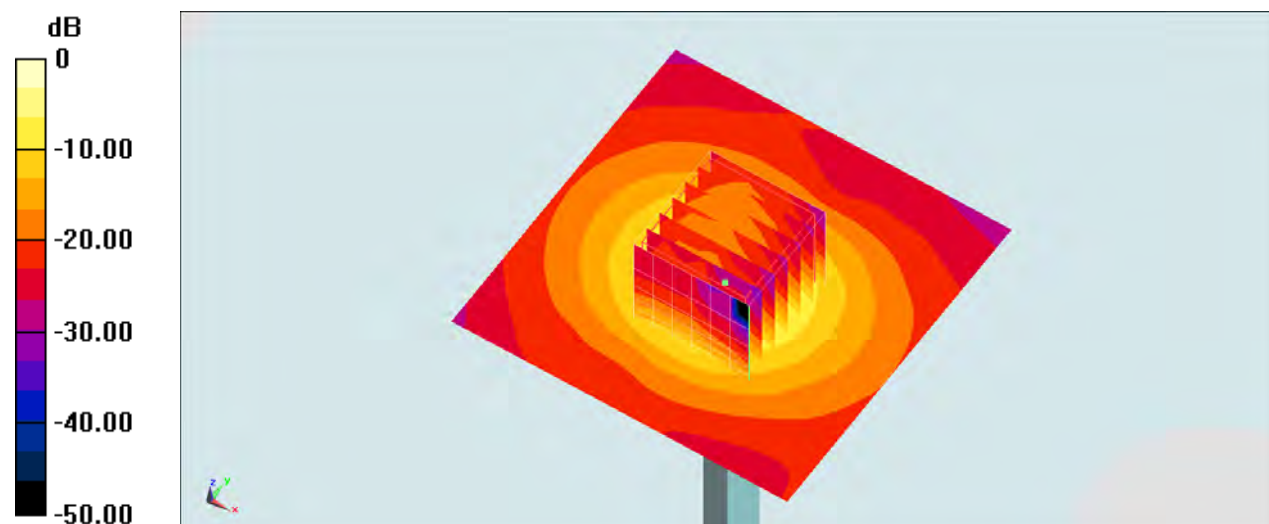
**Configuration/Pin=100mW/Zoom Scan (7x7x7)/Cube 0:** Measurement grid: dx=4mm, dy=4mm, dz=1.4mm

Reference Value = 67.35 V/m; Power Drift = -0.01 dB

Peak SAR (extrapolated) = 30.0 W/kg

**SAR(1 g) = 7.58 W/kg; SAR(10 g) = 2.15 W/kg**

Maximum value of SAR (measured) = 18.7 W/kg



0 dB = 18.7 W/kg = 12.72 dBW/kg

### System Check\_Body\_5250MHz\_151204

#### DUT: D5GHzV2-1128-5250

Communication System: 802.11a; Frequency: 5250 MHz; Duty Cycle: 1:1

Medium: MSL\_5G\_151204 Medium parameters used:  $f = 5250$  MHz;  $\sigma = 5.54$  mho/m;  $\epsilon_r = 46.9$ ;  $\rho = 1000$  kg/m<sup>3</sup>

Ambient Temperature : 23.3 °C; Liquid Temperature : 22.3 °C

#### DASY4 Configuration:

- Probe: EX3DV4 - SN3931; ConvF(4.48, 4.48, 4.48); Calibrated: 2015/10/1
- Sensor-Surface: 1.4mm (Mechanical Surface Detection)
- Electronics: DAE3 Sn577; Calibrated: 2015/9/24
- Phantom: SAM\_Right; Type: SAM; Serial: TP-1303
- ;Postprocessing SW: SEMCAD, V1.8 Build 159

**Pin=100mW/Area Scan (71x71x1):** Measurement grid: dx=10mm, dy=10mm

Maximum value of SAR (interpolated) = 19.1 mW/g

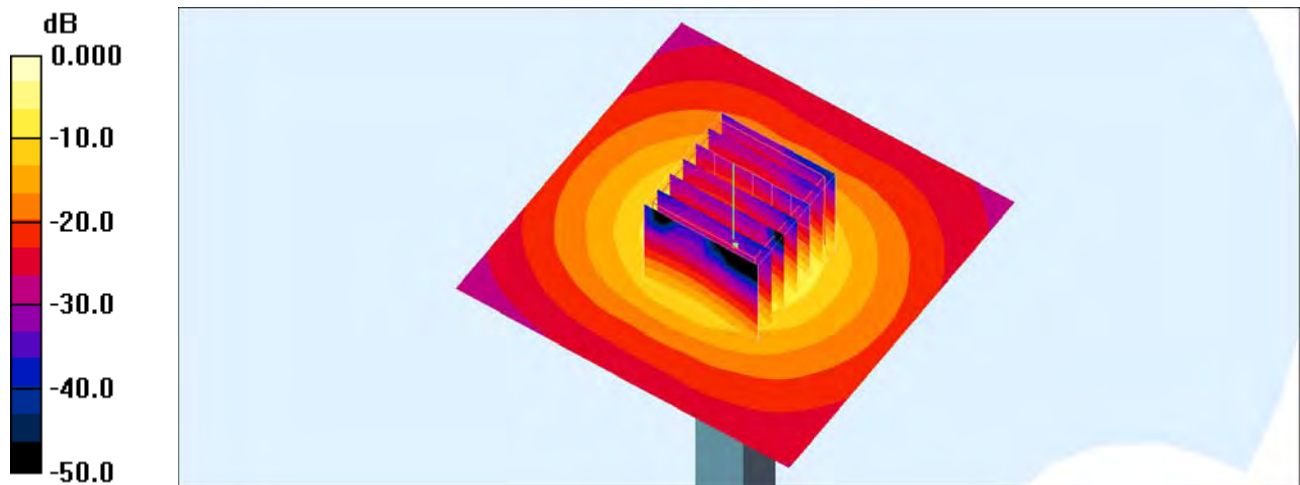
**Pin=100mW/Zoom Scan (7x7x7)/Cube 0:** Measurement grid: dx=4mm, dy=4mm, dz=1.4mm

Reference Value = 68.8 V/m; Power Drift = -0.050 dB

Peak SAR (extrapolated) = 32.5 W/kg

**SAR(1 g) = 7.83 mW/g; SAR(10 g) = 2.13 mW/g**

Maximum value of SAR (measured) = 19.8 mW/g



0 dB = 19.8mW/g

## System Check\_Body\_5600MHz\_150903

### DUT: D5GHzV2-1006-5600

Communication System: CW ; Frequency: 5600 MHz;Duty Cycle: 1:1

Medium: MSL\_5G\_150903 Medium parameters used:  $f = 5600$  MHz;  $\sigma = 5.948$  S/m;  $\epsilon_r = 47.125$ ;  $\rho = 1000$  kg/m<sup>3</sup>

Ambient Temperature : 23.2 °C ; Liquid Temperature : 22.2 °C

#### DASY5 Configuration:

- Probe: EX3DV4 - SN3925; ConvF(4.1, 4.1, 4.1); Calibrated: 2015/5/27;
- Sensor-Surface: 1.4mm (Mechanical Surface Detection)
- Electronics: DAE3 Sn495; Calibrated: 2015/5/22
- Phantom: SAM-Right; Type: QD 000 P40 C; Serial: TP-1446
- Measurement SW: DASY52, Version 52.8 (8);SEMCAD X Version 14.6.10 (7331)

**Configuration/Pin=100mW/Area Scan (71x71x1):** Interpolated grid: dx=1.000 mm, dy=1.000 mm

Maximum value of SAR (interpolated) = 22.7 W/kg

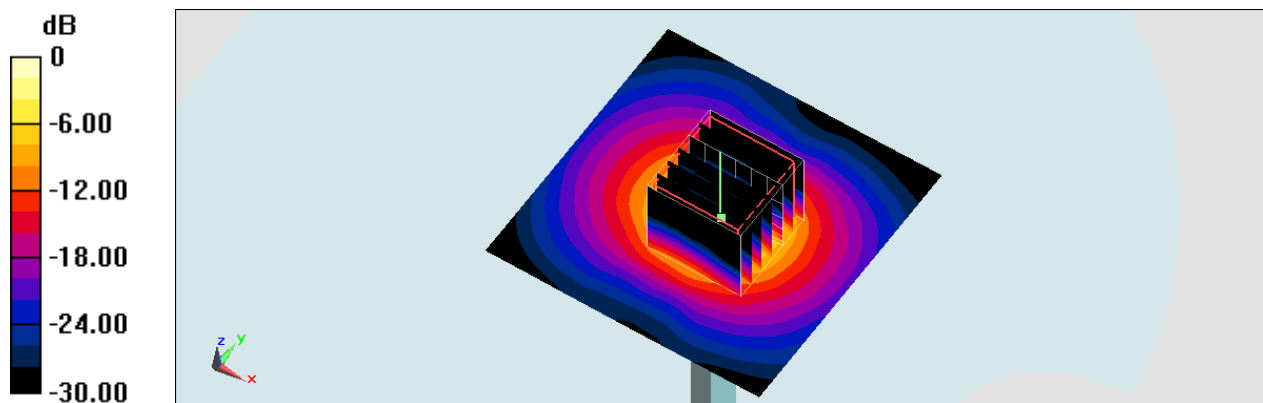
**Configuration/Pin=100mW/Zoom Scan (7x7x7)/Cube 0:** Measurement grid: dx=4mm, dy=4mm, dz=1.4mm

Reference Value = 70.28 V/m; Power Drift = -0.13 dB

Peak SAR (extrapolated) = 42.9 W/kg

**SAR(1 g) = 9.05 W/kg; SAR(10 g) = 2.4 W/kg**

Maximum value of SAR (measured) = 23.3 W/kg



0 dB = 23.3 W/kg = 13.67 dBW/kg

## System Check\_Body\_5600MHz\_151204

### DUT: D5GHzV2-1128-5600

Communication System: 802.11a; Frequency: 5600 MHz; Duty Cycle: 1:1

Medium: MSL\_5G\_151204 Medium parameters used:  $f = 5600 \text{ MHz}$ ;  $\sigma = 6 \text{ mho/m}$ ;  $\epsilon_r = 46.3$ ;  $\rho = 1000 \text{ kg/m}^3$

Ambient Temperature :  $23.3 \text{ }^\circ\text{C}$ ; Liquid Temperature :  $22.3 \text{ }^\circ\text{C}$

#### DASY4 Configuration:

- Probe: EX3DV4 - SN3931; ConvF(3.84, 3.84, 3.84); Calibrated: 2015/10/1
- Sensor-Surface: 1.4mm (Mechanical Surface Detection)
- Electronics: DAE3 Sn577; Calibrated: 2015/9/24
- Phantom: SAM\_Right; Type: SAM; Serial: TP-1303
- ;Postprocessing SW: SEMCAD, V1.8 Build 159

**Pin=100mW/Area Scan (71x71x1):** Measurement grid:  $dx=10\text{mm}$ ,  $dy=10\text{mm}$

Maximum value of SAR (interpolated) =  $20.6 \text{ mW/g}$

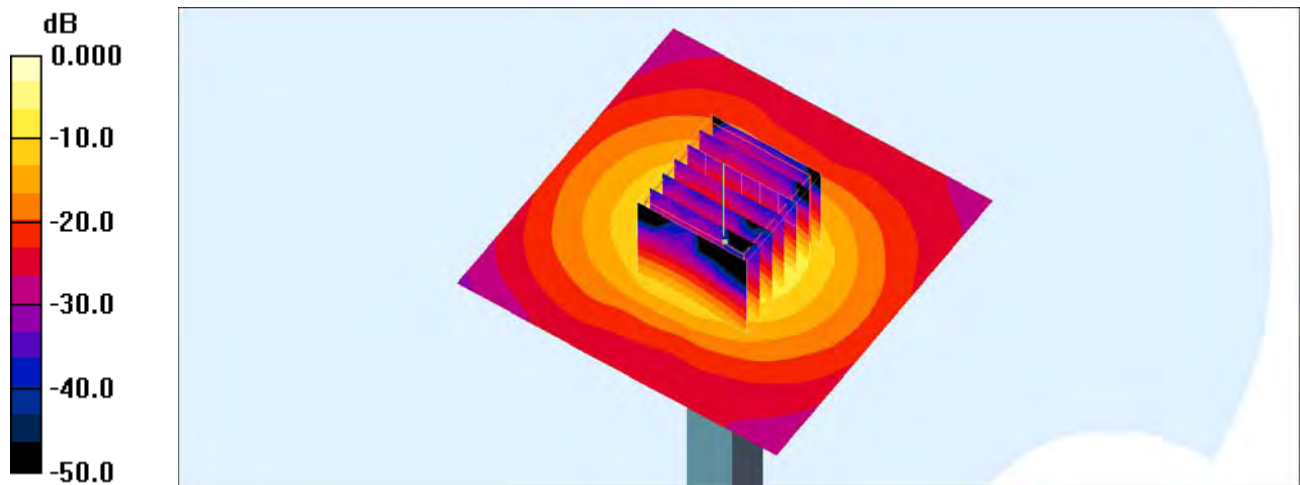
**Pin=100mW/Zoom Scan (7x7x7)/Cube 0:** Measurement grid:  $dx=4\text{mm}$ ,  $dy=4\text{mm}$ ,  $dz=1.4\text{mm}$

Reference Value =  $69.8 \text{ V/m}$ ; Power Drift =  $0.068 \text{ dB}$

Peak SAR (extrapolated) =  $36.9 \text{ W/kg}$

**SAR(1 g) =  $8.35 \text{ mW/g}$ ; SAR(10 g) =  $2.23 \text{ mW/g}$**

Maximum value of SAR (measured) =  $21.7 \text{ mW/g}$



0 dB =  $21.7\text{mW/g}$

## System Check\_Body\_5800MHz\_150904

### DUT: D5GHzV2-1006-5800

Communication System: CW ; Frequency: 5800 MHz;Duty Cycle: 1:1

Medium: MSL\_5G\_150904 Medium parameters used:  $f = 5800$  MHz;  $\sigma = 6.195$  S/m;  $\epsilon_r = 46.858$ ;  $\rho = 1000$  kg/m<sup>3</sup>

Ambient Temperature : 23.2 °C; Liquid Temperature : 22.2 °C

#### DASY5 Configuration:

- Probe: EX3DV4 - SN3925; ConvF(4.16, 4.16, 4.16); Calibrated: 2015/5/27;
- Sensor-Surface: 1.4mm (Mechanical Surface Detection)
- Electronics: DAE3 Sn495; Calibrated: 2015/5/22
- Phantom: SAM-Right; Type: QD 000 P40 C; Serial: TP-1446
- Measurement SW: DASY52, Version 52.8 (8);SEMCAD X Version 14.6.10 (7331)

**Configuration/Pin=100mW/Area Scan (71x71x1):** Interpolated grid: dx=1.000 mm, dy=1.000 mm

Maximum value of SAR (interpolated) = 21.6 W/kg

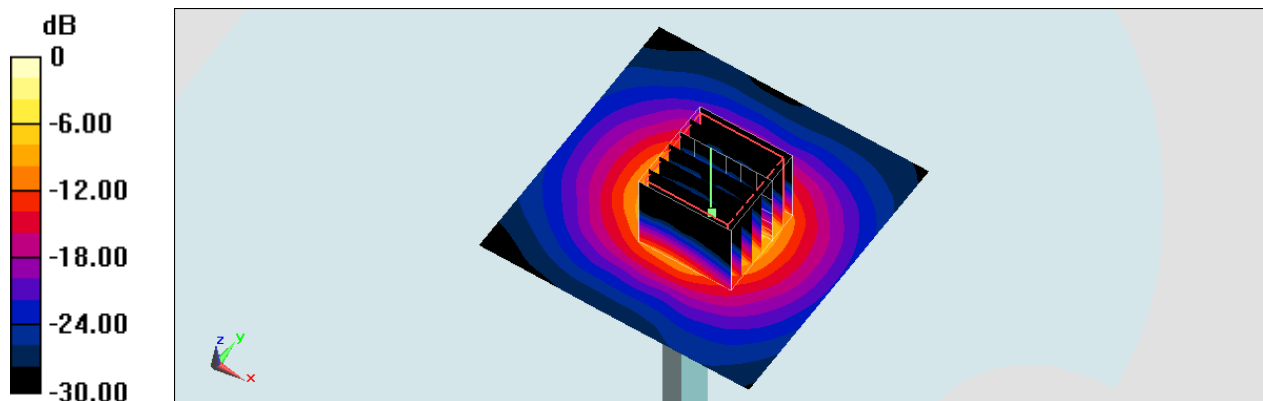
**Configuration/Pin=100mW/Zoom Scan (7x7x7)/Cube 0:** Measurement grid: dx=4mm, dy=4mm, dz=1.4mm

Reference Value = 68.40 V/m; Power Drift = -0.14 dB

Peak SAR (extrapolated) = 40.5 W/kg

**SAR(1 g) = 8.22 W/kg; SAR(10 g) = 2.19 W/kg**

Maximum value of SAR (measured) = 21.5 W/kg



0 dB = 21.5 W/kg = 13.32 dBW/kg

## System Check\_Body\_5750MHz\_151204

### DUT: D5GHzV2-1128-5750

Communication System: 802.11a; Frequency: 5750 MHz; Duty Cycle: 1:1

Medium: MSL\_5G\_151204 Medium parameters used:  $f = 5750$  MHz;  $\sigma = 6.21$  mho/m;  $\epsilon_r = 46$ ;  $\rho = 1000$  kg/m<sup>3</sup>

Ambient Temperature : 23.3 °C; Liquid Temperature : 22.3 °C

#### DASY4 Configuration:

- Probe: EX3DV4 - SN3931; ConvF(3.98, 3.98, 3.98); Calibrated: 2015/10/1
- Sensor-Surface: 1.4mm (Mechanical Surface Detection)
- Electronics: DAE3 Sn577; Calibrated: 2015/9/24
- Phantom: SAM\_Right; Type: SAM; Serial: TP-1303
- ;Postprocessing SW: SEMCAD, V1.8 Build 159

**Pin=100mW/Area Scan (71x71x1):** Measurement grid: dx=10mm, dy=10mm

Maximum value of SAR (interpolated) = 19.5 mW/g

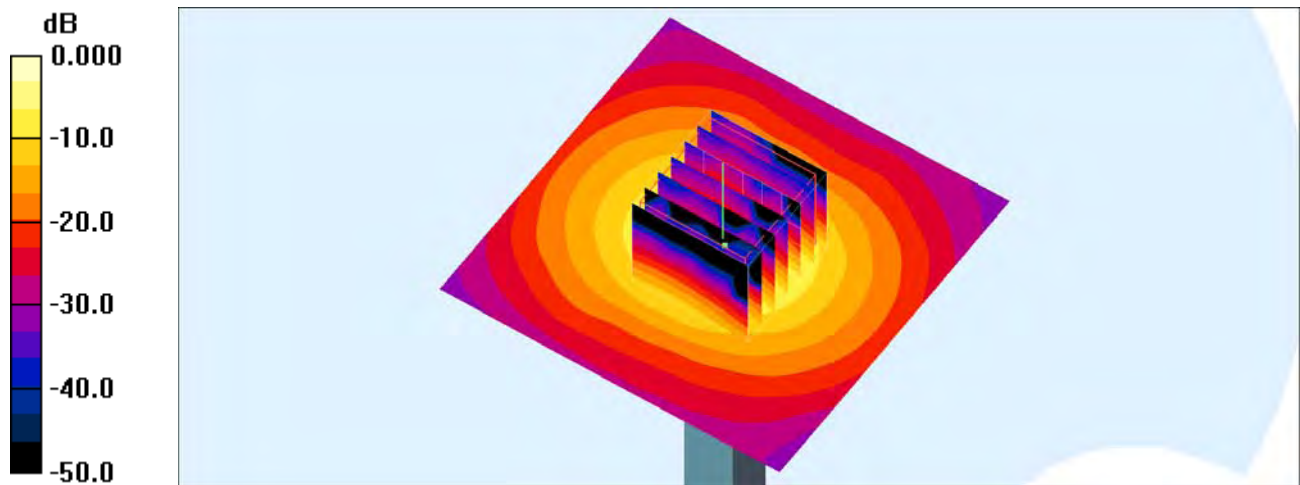
**Pin=100mW/Zoom Scan (7x7x7)/Cube 0:** Measurement grid: dx=4mm, dy=4mm, dz=1.4mm

Reference Value = 67.6 V/m; Power Drift = 0.002 dB

Peak SAR (extrapolated) = 35.9 W/kg

**SAR(1 g) = 7.91 mW/g; SAR(10 g) = 2.14 mW/g**

Maximum value of SAR (measured) = 20.6 mW/g



0 dB = 20.6mW/g