

System Check_Head_1900MHz

Communication System: ; Frequency: 1900.0

Medium: HSL_1900_221008. Medium parameters used: $f= 1900.0$ MHz; $\sigma= 1.42$ S/m; $\epsilon_r = 41.0$

Ambient Temperature: 23.5°C; Liquid Temperature: 22.5°C

DASY6 Configuration:

- Probe: EX3DV4 - SN3931; ConvF(8.25, 8.25, 8.25); Calibrated: 2021-10-21
- Sensor-Surface: 1.4 mm
- Electronics: DAE4 Sn376; Calibrated: 2021-11-22
- Phantom: Twin-SAM V4.0 (30deg probe tilt); Serial: 1488; Section: Flat
- Measurement Software: cDASY6 V6.6.0.13926
- UID: CW, 0--
- MAIA: Area Scan: N/A; Zoom Scan: N/A

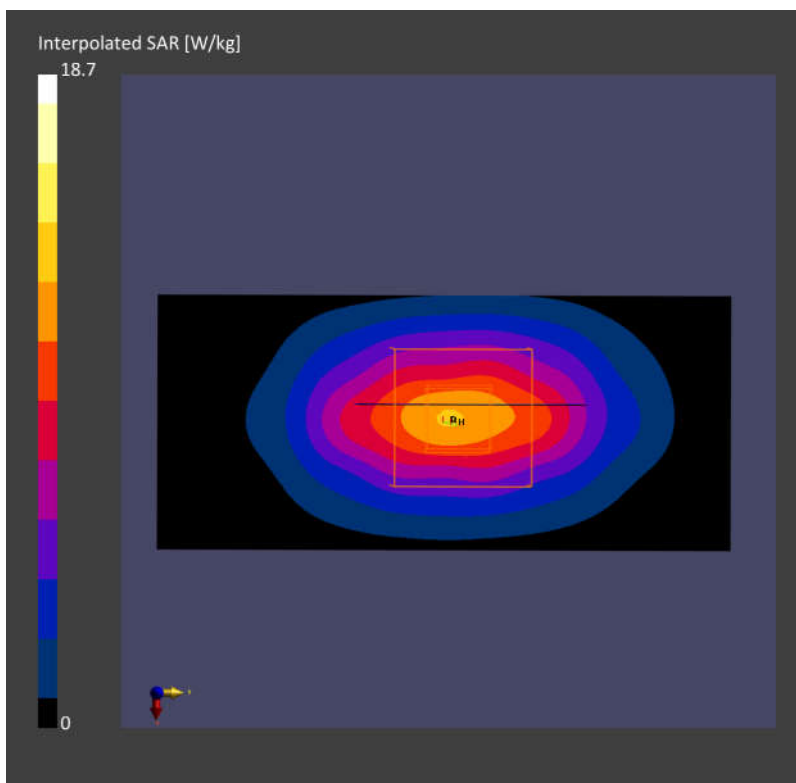
Area Scan (40.0 mm x 90.0 mm): Measurement Grid: 10.0 mm x 15.0 mm

SAR (1g) = 10.15 W/kg; SAR (10g) = 5.31 W/kg;

Zoom Scan (32.0 mm x 32.0 mm x 30.0 mm): Measurement Grid: 6.0 mm x 6.0 mm x 1.5 mm

Power Drift = -0.13 dB

SAR (1g) = 10.14 W/kg; SAR (10g) = 5.27 W/kg;



System Check_Head_2600MHz

Communication System: ; Frequency: 2600.0

Medium: HSL_2600_221008. Medium parameters used: $f = 2600.0$ MHz; $\sigma = 1.96$ S/m; $\epsilon_r = 38.7$

Ambient Temperature: 23.5°C; Liquid Temperature: 22.5°C

DASY6 Configuration:

- Probe: EX3DV4 - SN3931; ConvF(7.30, 7.30, 7.30); Calibrated: 2021-10-21
- Sensor-Surface: 1.4 mm
- Electronics: DAE4 Sn376; Calibrated: 2021-11-22
- Phantom: Twin-SAM V4.0 (30deg probe tilt); Serial: 1488; Section: Flat
- Measurement Software: cDASY6 V6.6.0.13926
- UID: CW, 0--
- MAIA: Area Scan: N/A; Zoom Scan: N/A

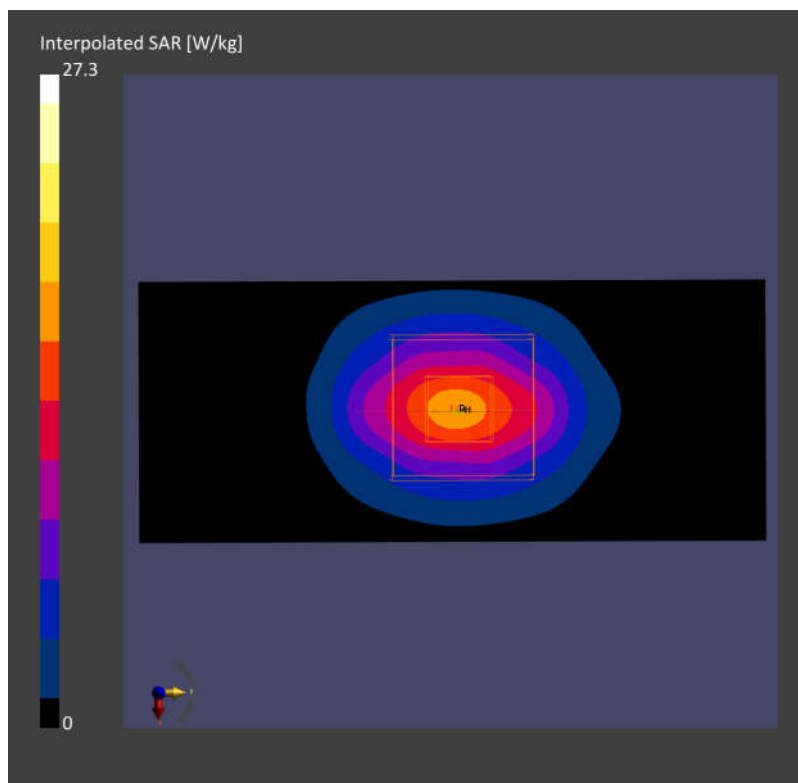
Area Scan (40.0 mm x 96.0 mm): Measurement Grid: 10.0 mm x 12.0 mm

SAR (1g) = 12.81 W/kg; SAR (10g) = 5.61 W/kg;

Zoom Scan (30.0 mm x 30.0 mm x 30.0 mm): Measurement Grid: 5.0 mm x 5.0 mm x 1.5 mm

Power Drift = 0.08 dB

SAR (1g) = 13.01 W/kg; SAR (10g) = 5.80 W/kg;



System Check_Head_3900MHz

Communication System: ; Frequency: 3900.0

Medium: HSL_3900_221008 Medium parameters used: $f= 3900.0$ MHz; $\sigma= 3.25$ S/m; $\epsilon_r = 36.7$

Ambient Temperature: 23.5°C; Liquid Temperature: 22.5°C

DASY6 Configuration:

- Probe: EX3DV4 - SN3931; ConvF(6.55, 6.55, 6.55); Calibrated: 2021-10-21
- Sensor-Surface: 1.4 mm
- Electronics: DAE4 Sn376; Calibrated: 2021-11-22
- Phantom: Twin-SAM V4.0 (30deg probe tilt); Serial: 1488; Section: Flat
- Measurement Software: cDASY6 V6.6.0.13926
- UID: CW, 0--
- MAIA: Area Scan: N/A; Zoom Scan: N/A

Area Scan (40.0 mm x 80.0 mm): Measurement Grid: 10.0 mm x 10.0 mm

SAR (1g) = 6.55 W/kg; SAR (10g) = 2.46 W/kg;

Zoom Scan (28.0 mm x 28.0 mm x 28.0 mm): Measurement Grid: 5.0 mm x 5.0 mm x 1.4 mm

Power Drift = 0.07 dB

SAR (1g) = 6.98 W/kg; SAR (10g) = 2.59 W/kg;

