

#01_WLAN2.4GHz_802.11b 1Mbps_Left Cheek_Ch1;Ant 9+8

Communication System: 802.11b; Frequency: 2412 MHz; Duty Cycle: 1:1
Medium: HSL_2450_220809 Medium parameters used: $f = 2412$ MHz; $\sigma = 1.747$ S/m; $\epsilon_r = 40.015$;
 $\rho = 1000$ kg/m³

Ambient Temperature : 23.3 °C ; Liquid Temperature : 22.3 °C

DASY5 Configuration:

- Probe: EX3DV4 - SN3925; ConvF(8.2, 8.2, 8.2) @ 2412 MHz; Calibrated: 2022/4/29
- Sensor-Surface: 1.4mm (Mechanical Surface Detection)
- Electronics: DAE4 Sn376; Calibrated: 2021/11/22
- Phantom: Twin-SAM V5.0 (30deg probe tilt)_Right; Type: QD 000 P40 CD; Serial: TP-1479
- Measurement SW: DASY52, Version52.10 (4); SEMCAD X Version 14.6.14 (7483)

Area Scan (91x91x1): Interpolated grid: dx=1.200 mm, dy=1.200 mm

Maximum value of SAR (interpolated) = 1.65 W/kg

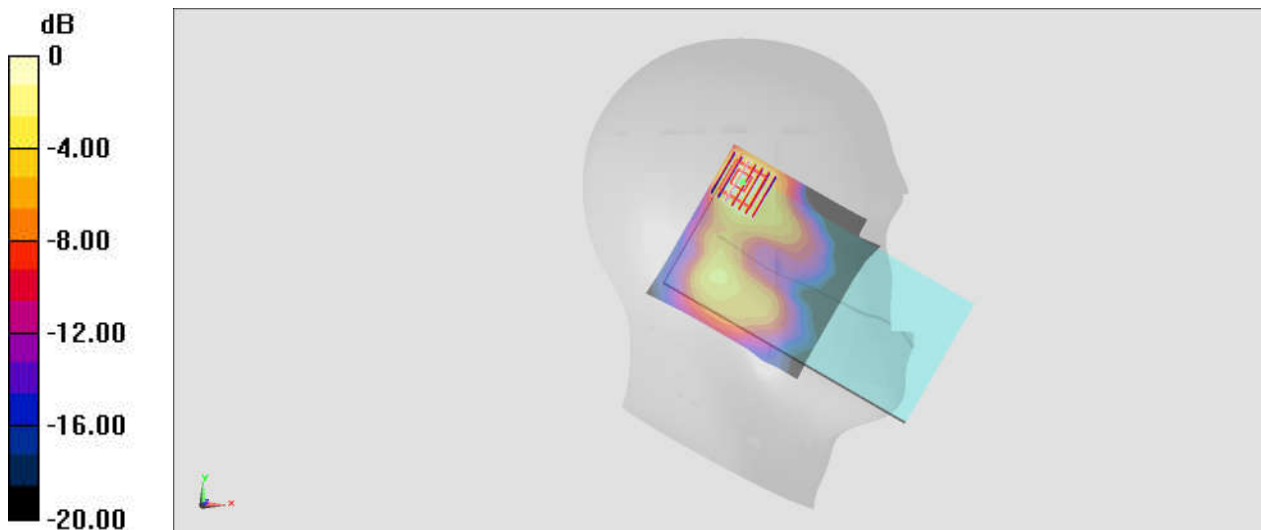
Zoom Scan (7x7x7)/Cube 0: Measurement grid: dx=5mm, dy=5mm, dz=5mm

Reference Value = 29.36 V/m; Power Drift = -0.17 dB

Peak SAR (extrapolated) = 2.05 W/kg

SAR(1 g) = 1.11 W/kg; SAR(10 g) = 0.562 W/kg

Maximum value of SAR (measured) = 1.67 W/kg



0 dB = 1.67 W/kg = 2.23 dBW/kg

#02_WLAN5GHz_802.11a 6Mbps_Left Cheek_Ch60;Ant 9+8

Communication System: 802.11a; Frequency: 5300 MHz; Duty Cycle: 1:1
Medium: HSL_5G_220810 Medium parameters used: $f = 5300 \text{ MHz}$; $\sigma = 4.763 \text{ S/m}$; $\epsilon_r = 36.645$; $\rho = 1000 \text{ kg/m}^3$

Ambient Temperature : 23.5 °C ; Liquid Temperature : 22.5 °C

DASY5 Configuration:

- Probe: EX3DV4 - SN7306; ConvF(5.34, 5.34, 5.34) @ 5300 MHz; Calibrated: 2022/7/28
- Sensor-Surface: 1.4mm (Mechanical Surface Detection)
- Electronics: DAE4 Sn853; Calibrated: 2022/7/20
- Phantom: SAM_Left; Type: QD000P40CD; Serial: TP:1801
- Measurement SW: DASY52, Version 52.10 (4); SEMCAD X Version 14.6.14 (7501)

Area Scan (111x111x1): Interpolated grid: $dx=1.000 \text{ mm}$, $dy=1.000 \text{ mm}$

Maximum value of SAR (interpolated) = 1.07 W/kg

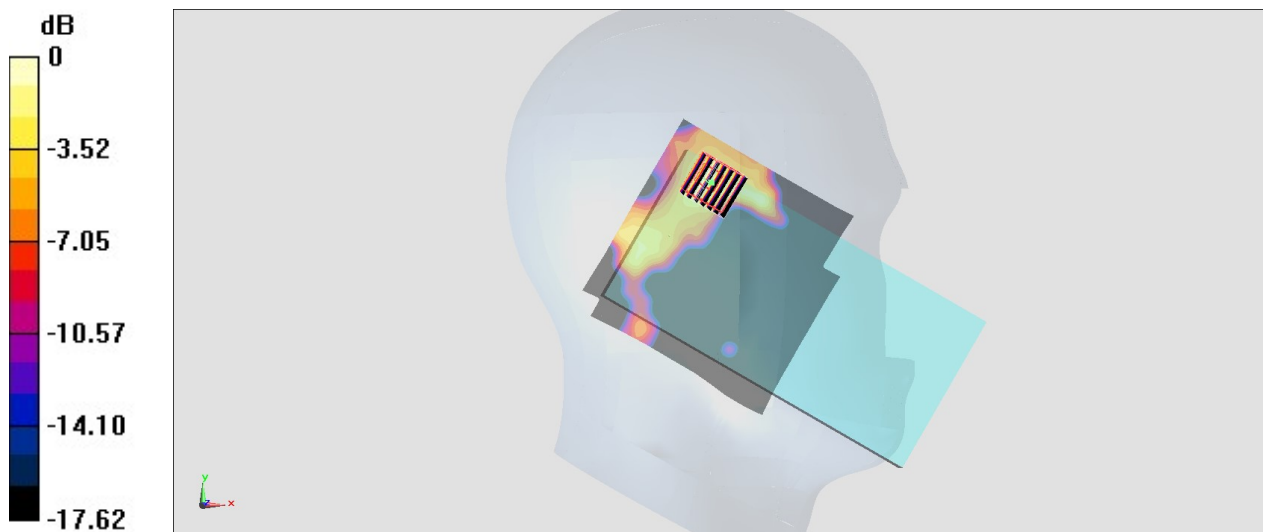
Zoom Scan (7x7x7)/Cube 0: Measurement grid: $dx=4\text{mm}$, $dy=4\text{mm}$, $dz=1.4\text{mm}$

Reference Value = 16.09 V/m; Power Drift = -0.05 dB

Peak SAR (extrapolated) = 1.47 W/kg

SAR(1 g) = 0.504 W/kg; SAR(10 g) = 0.186 W/kg

Maximum value of SAR (measured) = 1.06 W/kg



0 dB = 1.06 W/kg = 0.25 dBW/kg

#03_WLAN5GHz_802.11n-HT40 MCS0_Left Cheek_Ch142;Ant 9+8

Communication System: 802.11n; Frequency: 5710 MHz; Duty Cycle: 1:1

Medium: HSL_5G_220810 Medium parameters used: $f = 5710$ MHz; $\sigma = 5.173$ S/m; $\epsilon_r = 36.086$; $\rho = 1000$ kg/m³

Ambient Temperature : 23.5 °C ; Liquid Temperature : 22.5 °C

DASY5 Configuration:

- Probe: EX3DV4 - SN7306; ConvF(4.96, 4.96, 4.96) @ 5710 MHz; Calibrated: 2022/7/28
- Sensor-Surface: 1.4mm (Mechanical Surface Detection)
- Electronics: DAE4 Sn853; Calibrated: 2022/7/20
- Phantom: SAM_Left; Type: QD000P40CD; Serial: TP:1801
- Measurement SW: DASY52, Version 52.10 (4); SEMCAD X Version 14.6.14 (7501)

Area Scan (111x111x1): Interpolated grid: dx=1.000 mm, dy=1.000 mm

Maximum value of SAR (interpolated) = 1.18 W/kg

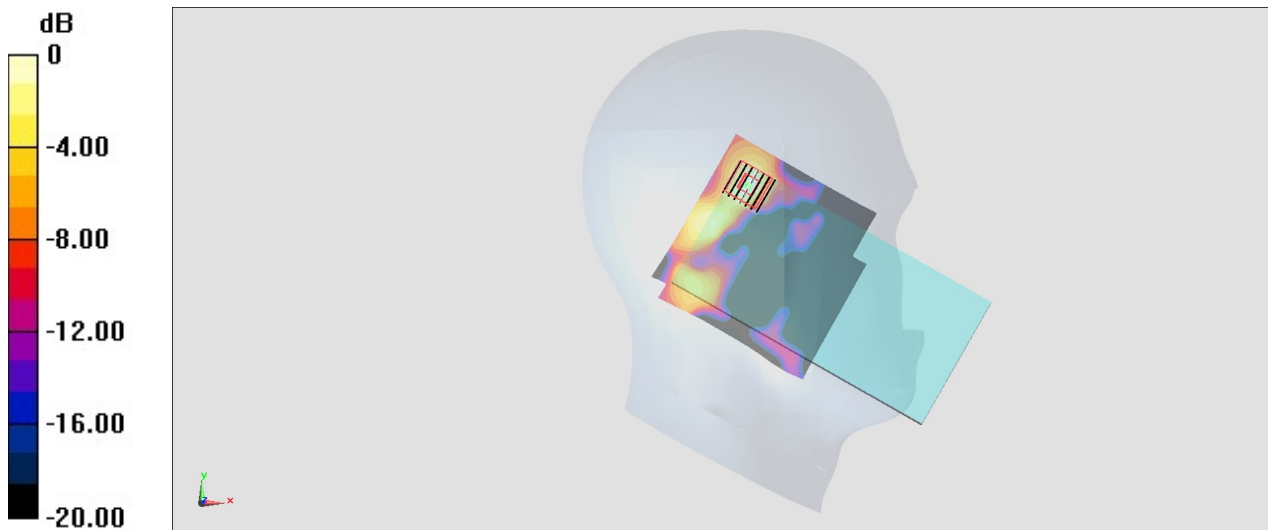
Zoom Scan (7x7x7)/Cube 0: Measurement grid: dx=4mm, dy=4mm, dz=1.4mm

Reference Value = 16.92 V/m; Power Drift = -0.13 dB

Peak SAR (extrapolated) = 1.97 W/kg

SAR(1 g) = 0.488 W/kg; SAR(10 g) = 0.154 W/kg

Maximum value of SAR (measured) = 1.21 W/kg



0 dB = 1.21 W/kg = 0.83 dBW/kg

#04_WLAN5GHz_802.11a 6Mbps_Left Cheek_Ch165;Ant 9+8

Communication System: 802.11a; Frequency: 5825 MHz; Duty Cycle: 1:1.008

Medium: HSL_5G_220810 Medium parameters used: $f = 5825$ MHz; $\sigma = 5.296$ S/m; $\epsilon_r = 35.912$; $\rho = 1000$ kg/m³

Ambient Temperature : 23.5 °C ; Liquid Temperature : 22.5 °C

DASY5 Configuration:

- Probe: EX3DV4 - SN7306; ConvF(4.96, 4.96, 4.96) @ 5825 MHz; Calibrated: 2022/7/28
- Sensor-Surface: 1.4mm (Mechanical Surface Detection)
- Electronics: DAE4 Sn853; Calibrated: 2022/7/20
- Phantom: SAM_Left; Type: QD000P40CD; Serial: TP:1801
- Measurement SW: DASY52, Version 52.10 (4); SEMCAD X Version 14.6.14 (7501)

Area Scan (111x111x1): Interpolated grid: dx=1.000 mm, dy=1.000 mm

Maximum value of SAR (interpolated) = 1.57 W/kg

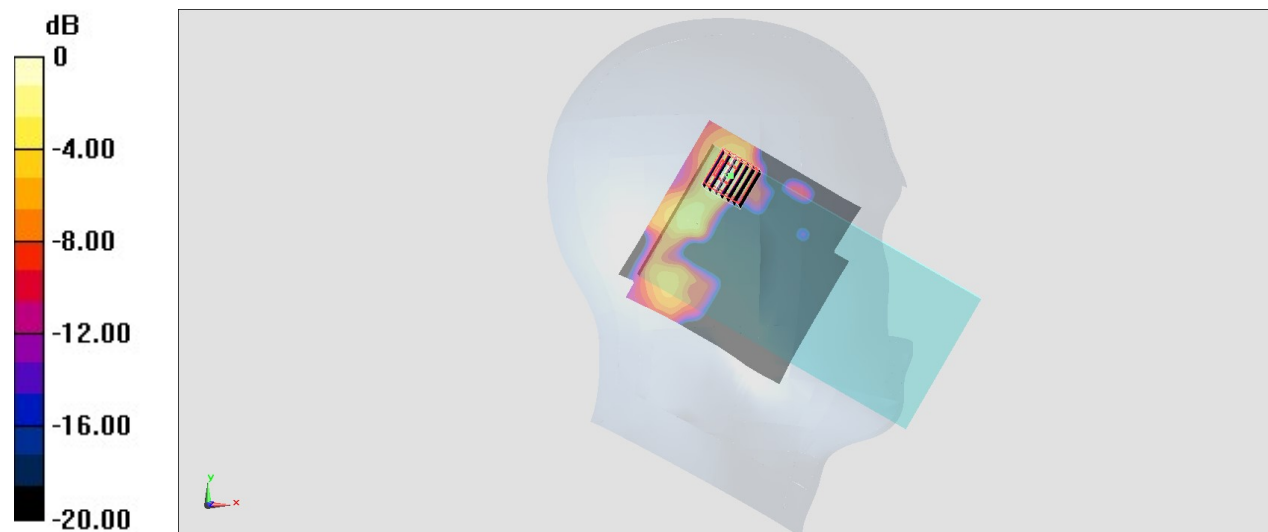
Zoom Scan (7x7x7)/Cube 0: Measurement grid: dx=4mm, dy=4mm, dz=1.4mm

Reference Value = 17.73 V/m; Power Drift = -0.06 dB

Peak SAR (extrapolated) = 2.21 W/kg

SAR(1 g) = 0.641 W/kg; SAR(10 g) = 0.192 W/kg

Maximum value of SAR (measured) = 1.50 W/kg



0 dB = 1.50 W/kg = 1.76 dBW/kg

#05_WLAN6GHz_802.11ac-VHT160 MCS0_Right Tilted_0mm_Ch15;Ant 9+8

Communication System: U-NII-5; Frequency: 6025.0 ; Duty Cycle: 1:1.018

Medium: HSL_6G_220826 Medium parameters used: $f = 6025.0$ MHz; $\sigma = 5.51$ S/m; $\epsilon_r = 35.0$

Ambient Temperature: 23.5°C; Liquid Temperature: 22.5°C

DASY6 Configuration:

- Probe: EX3DV4 - SN3642; ConvF(5.0, 5.0, 5.0); Calibrated: 2022-04-28

- Sensor-Surface: 1.4 mm

- Electronics: DAE4 Sn316; Calibrated: 2022-01-26

- Phantom: Twin-SAM V5.0 (30deg probe tilt); Serial: 1884; Section: RightHead

- Measurement Software: cDASY6 V6.6.0.13926

- UID: WLAN, 10755-AAC

- MAIA: Area Scan: N/A; Zoom Scan: N/A

Area Scan (119.0 mm x 102.0 mm): Measurement Grid: 8.5 mm x 8.5 mm

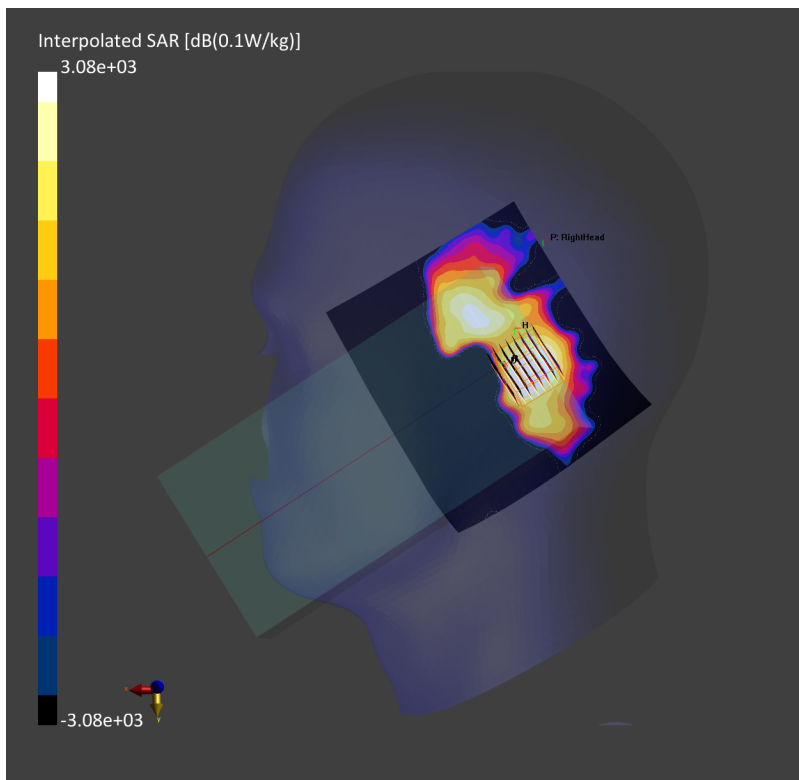
SAR (1g) = 0.084 W/kg; SAR (10g) = 0.029 W/kg;

Zoom Scan (23.8 mm x 23.8 mm x 22.0 mm): Measurement Grid: 3.4 mm x 3.4 mm x 1.4 mm

Power Drift = -0.02 dB

SAR (1g) = 0.094 W/kg; SAR (8g) = 0.038 W/kg; SAR (10g) = 0.033 W/kg;

psAPD (1.0cm², sq) = 0.944 [W/m²]; psAPD (4.0cm², sq) = 0.768 [W/m²]



#06_Bluetooth_1Mbps_Left Cheek_0mm_Ch39;Ant 9

Communication System: Bluetooth; Frequency: 2441 MHz; Duty Cycle: 1:1.302

Medium: HSL_2450_220811 Medium parameters used: $f = 2441$ MHz; $\sigma = 1.77$ S/m; $\epsilon_r = 39.795$; $\rho = 1000$ kg/m³

Ambient Temperature : 23.5 °C; Liquid Temperature : 22.5 °C

DASY5 Configuration:

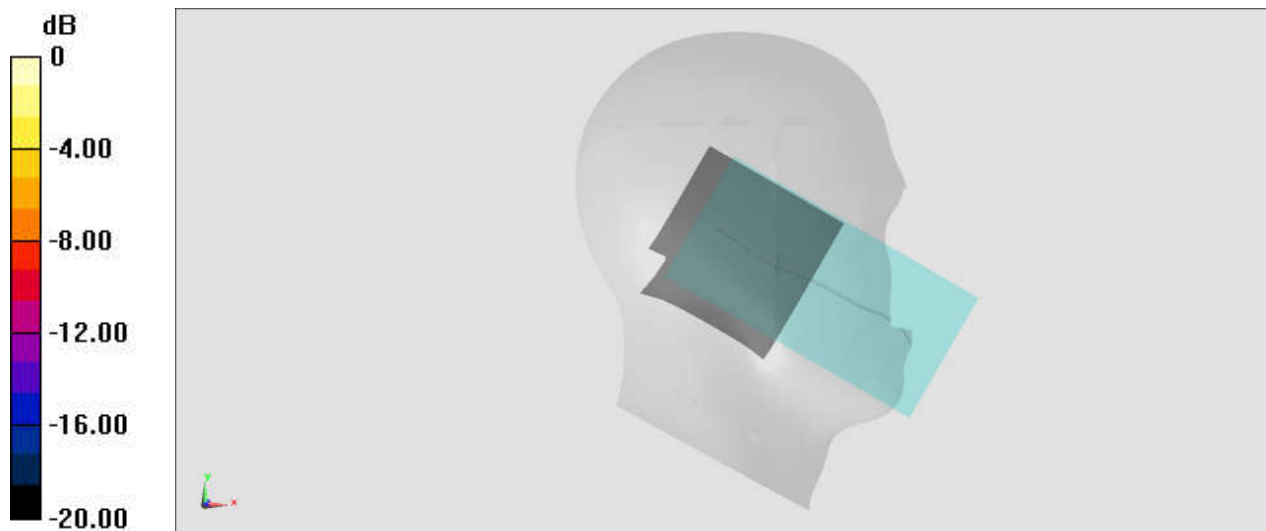
- Probe: EX3DV4 - SN7306; ConvF(7.54, 7.54, 7.54) @ 2441 MHz; Calibrated: 2022/7/28
- Sensor-Surface: 1.4mm (Mechanical Surface Detection)
- Electronics: DAE4 Sn853; Calibrated: 2022/7/20
- Phantom: Twin-SAM V5.0 (30deg probe tilt)_Right; Type: QD 000 P40 CD; Serial: TP-1479
- Measurement SW: DASY52, Version52.10 (4); SEMCAD X Version 14.6.14 (7483)

Area Scan (81x81x1): Interpolated grid: dx=1.200 mm, dy=1.200 mm

Reference Value = 0 V/m; Power Drift = 0.00 dB

Fast SAR: SAR(1 g) = 0 W/kg; SAR(10 g) = 0 W/kg

Maximum value of SAR (interpolated) = 0 W/kg



0 dB = 0 W/kg = -999.00 dBW/kg

#07_WLAN2.4GHz_802.11b 1Mbps_Right Side_10mm_Ch1;Ant 9+8

Communication System: 802.11b; Frequency: 2412 MHz; Duty Cycle: 1:1
Medium: HSL_2450_220809 Medium parameters used: $f = 2412$ MHz; $\sigma = 1.747$ S/m; $\epsilon_r = 40.015$;
 $\rho = 1000$ kg/m³

Ambient Temperature : 23.3 °C ; Liquid Temperature : 22.3 °C

DASY5 Configuration:

- Probe: EX3DV4 - SN3925; ConvF(8.2, 8.2, 8.2) @ 2412 MHz; Calibrated: 2022/4/29
- Sensor-Surface: 1.4mm (Mechanical Surface Detection)
- Electronics: DAE4 Sn376; Calibrated: 2021/11/22
- Phantom: Twin-SAM V5.0 (30deg probe tilt)_Right; Type: QD 000 P40 CD; Serial: TP-1479
- Measurement SW: DASY52, Version52.10 (4); SEMCAD X Version 14.6.14 (7483)

Area Scan (61x91x1): Interpolated grid: dx=1.200 mm, dy=1.200 mm

Maximum value of SAR (interpolated) = 0.965 W/kg

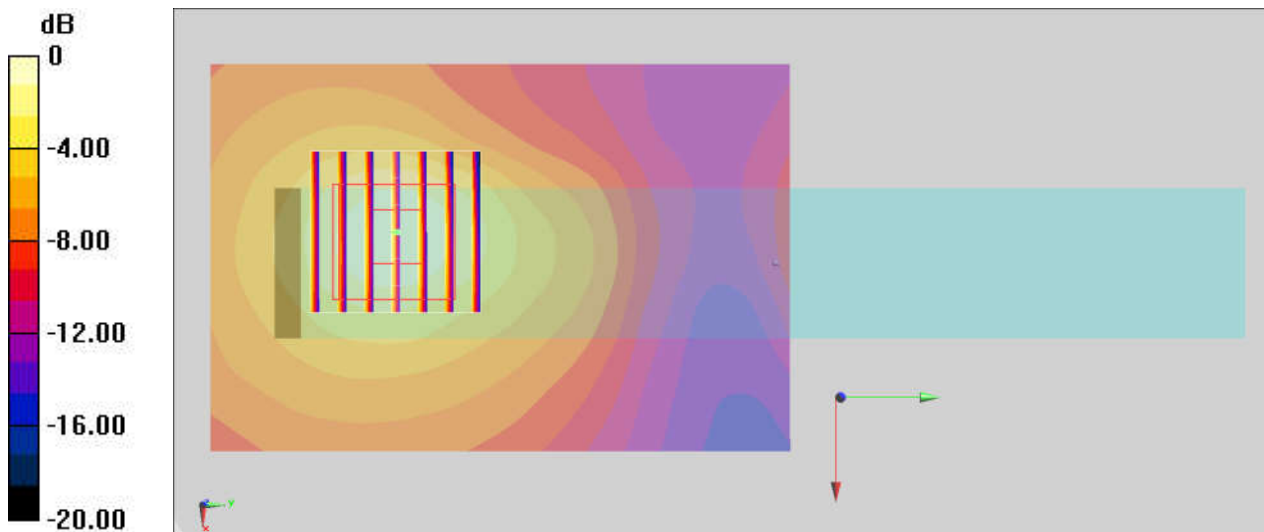
Zoom Scan (7x7x7)/Cube 0: Measurement grid: dx=5mm, dy=5mm, dz=5mm

Reference Value = 21.07 V/m; Power Drift = -0.03 dB

Peak SAR (extrapolated) = 1.16 W/kg

SAR(1 g) = 0.621 W/kg; SAR(10 g) = 0.336 W/kg

Maximum value of SAR (measured) = 0.956 W/kg



#08_Bluetooth_1Mbps_Left Side_10mm_Ch39;Ant 9

Communication System: Bluetooth; Frequency: 2441 MHz; Duty Cycle: 1:1.302
Medium: HSL_2450_220811 Medium parameters used: $f = 2441$ MHz; $\sigma = 1.77$ S/m; $\epsilon_r = 39.795$; $\rho = 1000$ kg/m³

Ambient Temperature : 23.5 °C; Liquid Temperature : 22.5 °C

DASY5 Configuration:

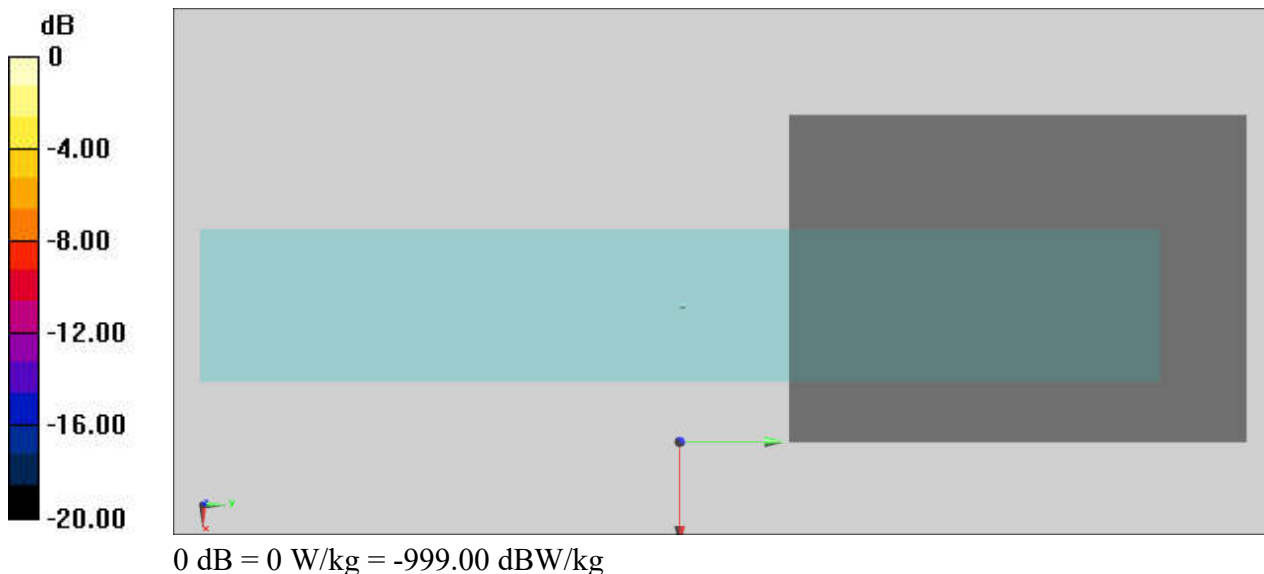
- Probe: EX3DV4 - SN7306; ConvF(7.54, 7.54, 7.54) @ 2441 MHz; Calibrated: 2022/7/28
- Sensor-Surface: 1.4mm (Mechanical Surface Detection)
- Electronics: DAE4 Sn853; Calibrated: 2022/7/20
- Phantom: Twin-SAM V5.0 (30deg probe tilt)_Right; Type: QD 000 P40 CD; Serial: TP-1479
- Measurement SW: DASY52, Version52.10 (4); SEMCAD X Version 14.6.14 (7483)

Area Scan (51x71x1): Interpolated grid: dx=1.200 mm, dy=1.200 mm

Reference Value = 0.5390 V/m; Power Drift = 0 dB

Fast SAR: SAR(1 g) = 0 W/kg; SAR(10 g) = 0 W/kg

Maximum value of SAR (interpolated) = 0 W/kg



#09_WLAN2.4GHz_802.11b 1Mbps_Back_15mm_Ch1;Ant 9+8

Communication System: 802.11b; Frequency: 2412 MHz; Duty Cycle: 1:1
Medium: HSL_2450_220809 Medium parameters used: $f = 2412$ MHz; $\sigma = 1.747$ S/m; $\epsilon_r = 40.015$;
 $\rho = 1000$ kg/m³

Ambient Temperature : 23.3 °C ; Liquid Temperature : 22.3 °C

DASY5 Configuration:

- Probe: EX3DV4 - SN3925; ConvF(8.2, 8.2, 8.2) @ 2412 MHz; Calibrated: 2022/4/29
- Sensor-Surface: 1.4mm (Mechanical Surface Detection)
- Electronics: DAE4 Sn376; Calibrated: 2021/11/22
- Phantom: Twin-SAM V5.0 (30deg probe tilt)_Right; Type: QD 000 P40 CD; Serial: TP-1479
- Measurement SW: DASY52, Version52.10 (4); SEMCAD X Version 14.6.14 (7483)

Area Scan (91x91x1): Interpolated grid: dx=1.200 mm, dy=1.200 mm

Maximum value of SAR (interpolated) = 0.502 W/kg

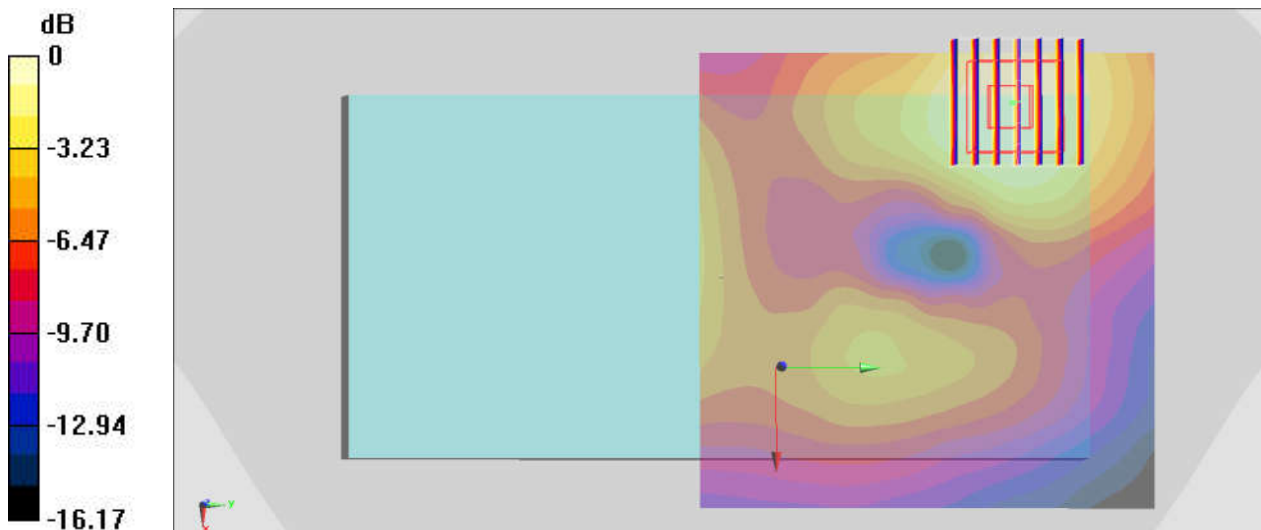
Zoom Scan (7x7x7)/Cube 0: Measurement grid: dx=5mm, dy=5mm, dz=5mm

Reference Value = 17.41 V/m; Power Drift = -0.11 dB

Peak SAR (extrapolated) = 0.582 W/kg

SAR(1 g) = 0.339 W/kg; SAR(10 g) = 0.202 W/kg

Maximum value of SAR (measured) = 0.488 W/kg



0 dB = 0.488 W/kg = -3.12 dBW/kg

#10_WLAN5GHz_802.11a 6Mbps_Back_15mm_Ch60;Ant 9+8

Communication System: 802.11a; Frequency: 5300 MHz; Duty Cycle: 1:1
Medium: HSL_5G_220810 Medium parameters used: $f = 5300$ MHz; $\sigma = 4.763$ S/m; $\epsilon_r = 36.645$;
 $\rho = 1000$ kg/m³

Ambient Temperature : 23.5 °C ; Liquid Temperature : 22.5 °C

DASY5 Configuration:

- Probe: EX3DV4 - SN7306; ConvF(5.34, 5.34, 5.34) @ 5300 MHz; Calibrated: 2022/7/28
- Sensor-Surface: 1.4mm (Mechanical Surface Detection)
- Electronics: DAE4 Sn853; Calibrated: 2022/7/20
- Phantom: SAM_Left; Type: QD000P40CD; Serial: TP:1801
- Measurement SW: DASY52, Version 52.10 (4); SEMCAD X Version 14.6.14 (7501)

Area Scan (111x111x1): Interpolated grid: dx=1.000 mm, dy=1.000 mm

Maximum value of SAR (interpolated) = 0.731 W/kg

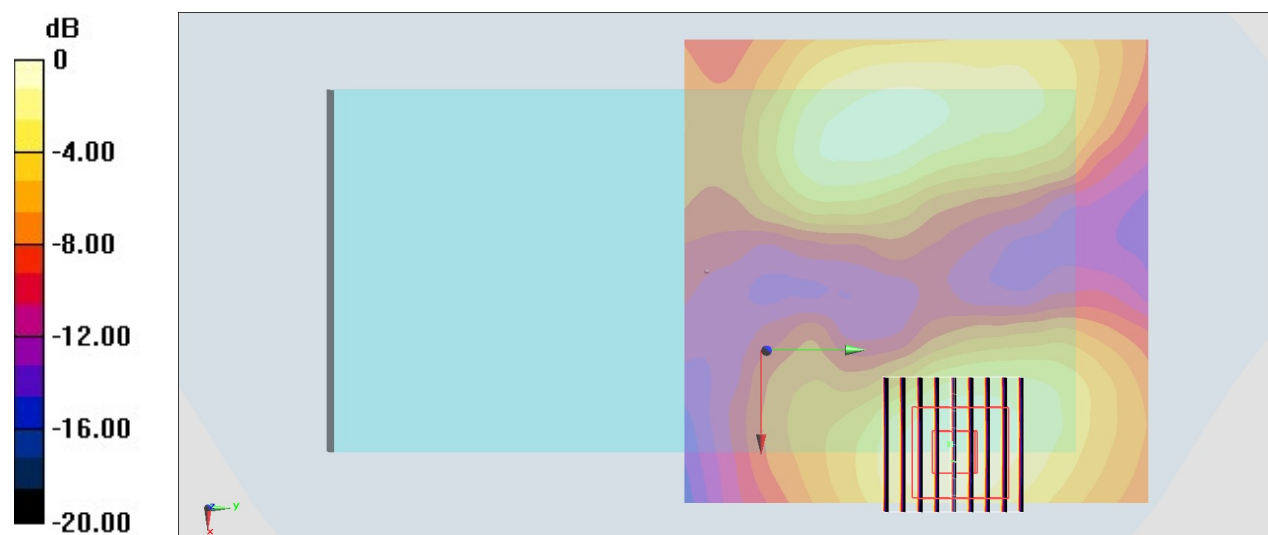
Zoom Scan (9x9x7)/Cube 0: Measurement grid: dx=4mm, dy=4mm, dz=1.4mm

Reference Value = 12.24 V/m; Power Drift = -0.07 dB

Peak SAR (extrapolated) = 0.950 W/kg

SAR(1 g) = 0.354 W/kg; SAR(10 g) = 0.156 W/kg

Maximum value of SAR (measured) = 0.677 W/kg



0 dB = 0.677 W/kg = -1.69 dBW/kg

#11_WLAN5GHz_802.11n-HT40 MCS0_Back_15mm_Ch142;Ant 9+8

Communication System: 802.11n; Frequency: 5710 MHz; Duty Cycle: 1:1

Medium: HSL_5G_220810 Medium parameters used: $f = 5710$ MHz; $\sigma = 5.173$ S/m; $\epsilon_r = 36.086$; $\rho = 1000$ kg/m³

Ambient Temperature : 23.5 °C; Liquid Temperature : 22.5 °C

DASY5 Configuration:

- Probe: EX3DV4 - SN7306; ConvF(4.96, 4.96, 4.96) @ 5710 MHz; Calibrated: 2022/7/28
- Sensor-Surface: 1.4mm (Mechanical Surface Detection)
- Electronics: DAE4 Sn853; Calibrated: 2022/7/20
- Phantom: SAM_Left; Type: QD000P40CD; Serial: TP:1801
- Measurement SW: DASY52, Version 52.10 (4); SEMCAD X Version 14.6.14 (7501)

Area Scan (111x111x1): Interpolated grid: dx=1.000 mm, dy=1.000 mm

Maximum value of SAR (interpolated) = 1.22 W/kg

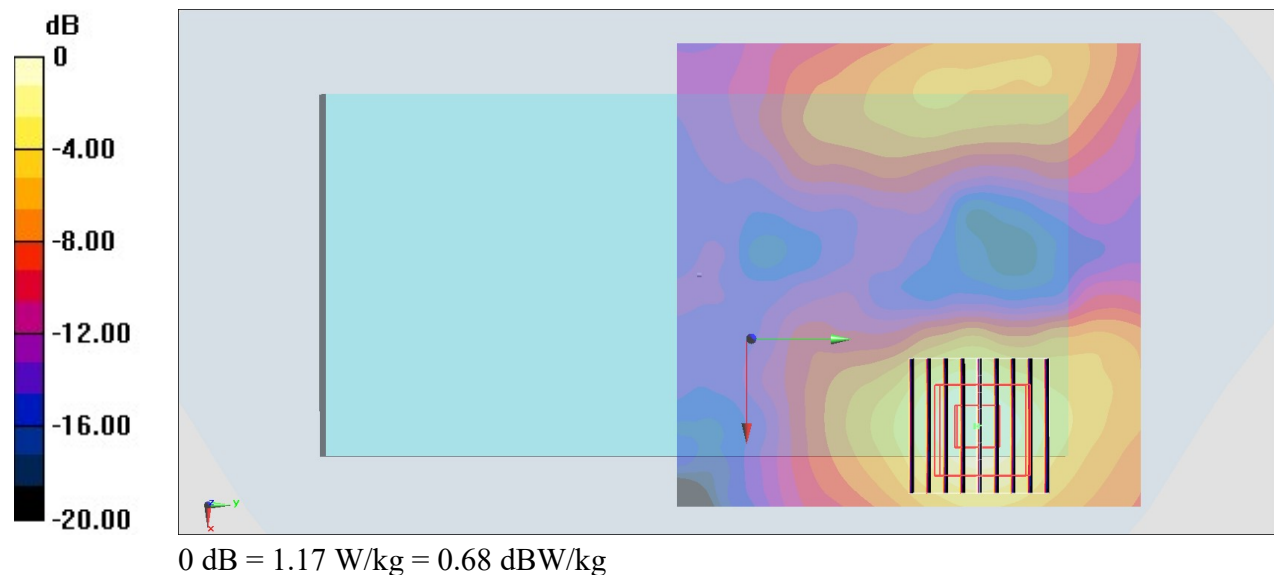
Zoom Scan (9x9x7)/Cube 0: Measurement grid: dx=4mm, dy=4mm, dz=1.4mm

Reference Value = 12.92 V/m; Power Drift = -0.06 dB

Peak SAR (extrapolated) = 1.60 W/kg

SAR(1 g) = 0.593 W/kg; SAR(10 g) = 0.245 W/kg

Maximum value of SAR (measured) = 1.17 W/kg



#12_WLAN5GHz_802.11a 6Mbps_Back_15mm_Ch165;Ant 9+8

Communication System: 802.11a; Frequency: 5825 MHz; Duty Cycle: 1:1.008

Medium: HSL_5G_220810 Medium parameters used: $f = 5825$ MHz; $\sigma = 5.296$ S/m; $\epsilon_r = 35.912$; $\rho = 1000$ kg/m³

Ambient Temperature : 23.5 °C ; Liquid Temperature : 22.5 °C

DASY5 Configuration:

- Probe: EX3DV4 - SN7306; ConvF(4.96, 4.96, 4.96) @ 5825 MHz; Calibrated: 2022/7/28
- Sensor-Surface: 1.4mm (Mechanical Surface Detection)
- Electronics: DAE4 Sn853; Calibrated: 2022/7/20
- Phantom: SAM_Left; Type: QD000P40CD; Serial: TP:1801
- Measurement SW: DASY52, Version 52.10 (4); SEMCAD X Version 14.6.14 (7501)

Area Scan (111x111x1): Interpolated grid: dx=1.000 mm, dy=1.000 mm

Maximum value of SAR (interpolated) = 1.16 W/kg

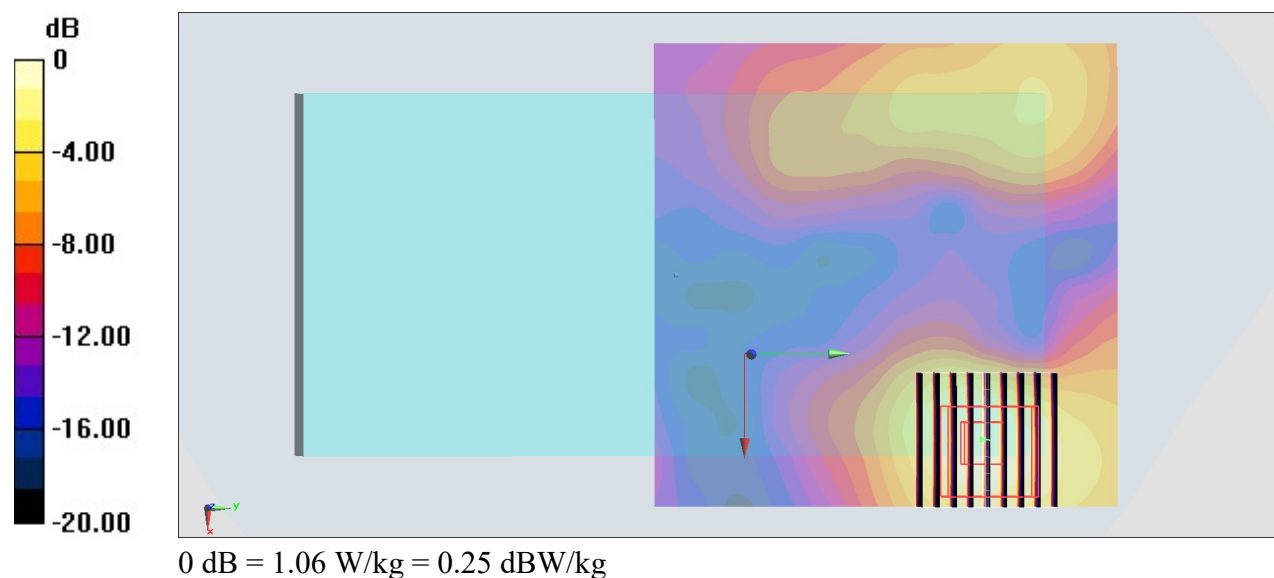
Zoom Scan (9x9x7)/Cube 0: Measurement grid: dx=4mm, dy=4mm, dz=1.4mm

Reference Value = 11.50 V/m; Power Drift = -0.06 dB

Peak SAR (extrapolated) = 1.57 W/kg

SAR(1 g) = 0.528 W/kg; SAR(10 g) = 0.219 W/kg

Maximum value of SAR (measured) = 1.06 W/kg



#13_WLAN6GHz_802.11ac-VHT160 MCS0_Back_15mm_Ch15;Ant 9+8

Communication System: U-NII-5; Frequency: 6025.0 ; Duty Cycle: 1:1.018

Medium: HSL_6G_220825 Medium parameters used: $f = 6025.0$ MHz; $\sigma = 5.55$ S/m; $\epsilon_r = 36.6$

Ambient Temperature: 23.5°C; Liquid Temperature: 22.5°C

DASY6 Configuration:

- Probe: EX3DV4 - SN3642; ConvF(5.0, 5.0, 5.0); Calibrated: 2022-04-28
- Sensor-Surface: 1.4 mm
- Electronics: DAE4 Sn316; Calibrated: 2022-01-26
- Phantom: ELI V5.0 (20deg probe tilt); Serial: 1238; Section: Flat
- Measurement Software: cDASY6 V6.6.0.13926
- UID: WLAN, 10755-AAC
- MAIA: Area Scan: N/A; Zoom Scan: N/A

Area Scan (119.0 mm x 119.0 mm): Measurement Grid: 8.5 mm x 8.5 mm

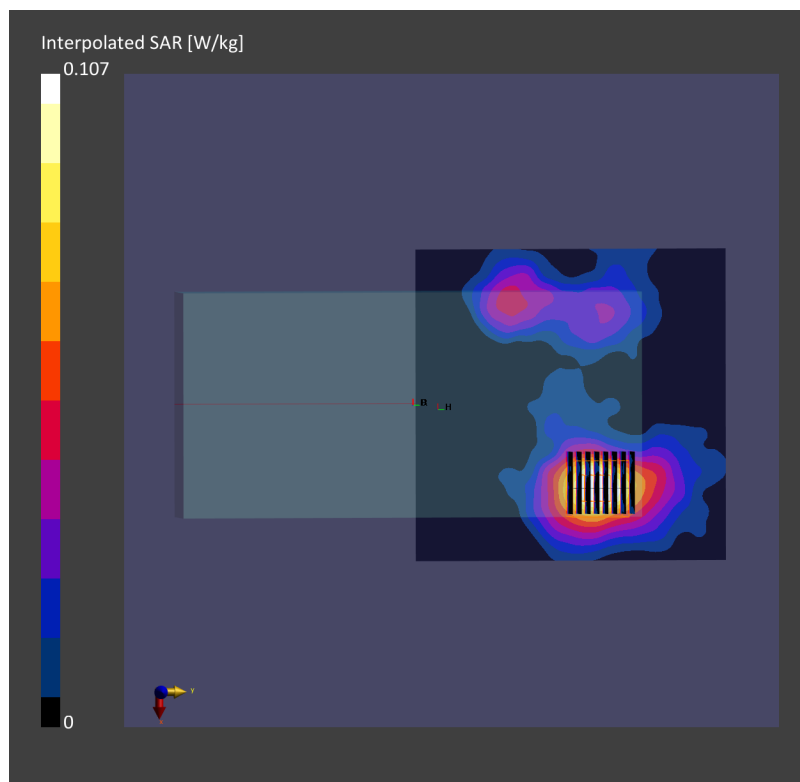
SAR (1g) = 0.088 W/kg; SAR (10g) = 0.034 W/kg;

Zoom Scan (23.8 mm x 23.8 mm x 22.0 mm): Measurement Grid: 3.4 mm x 3.4 mm x 1.4 mm

Power Drift = 0.18 dB

SAR (1g) = 0.107 W/kg; SAR (8g) = 0.048 W/kg; SAR (10g) = 0.044 W/kg;

psAPD (1.0cm², sq) = 1.07 [W/m²]; psAPD (4.0cm², sq) = 0.968 [W/m²]



#14_Bluetooth_1Mbps_Back_15mm_Ch39;Ant 9

Communication System: Bluetooth; Frequency: 2441 MHz; Duty Cycle: 1:1.302
Medium: HSL_2450_220811 Medium parameters used: $f = 2441 \text{ MHz}$; $\sigma = 1.77 \text{ S/m}$; $\epsilon_r = 39.795$; $\rho = 1000 \text{ kg/m}^3$

Ambient Temperature : 23.5 °C; Liquid Temperature : 22.5 °C

DASY5 Configuration:

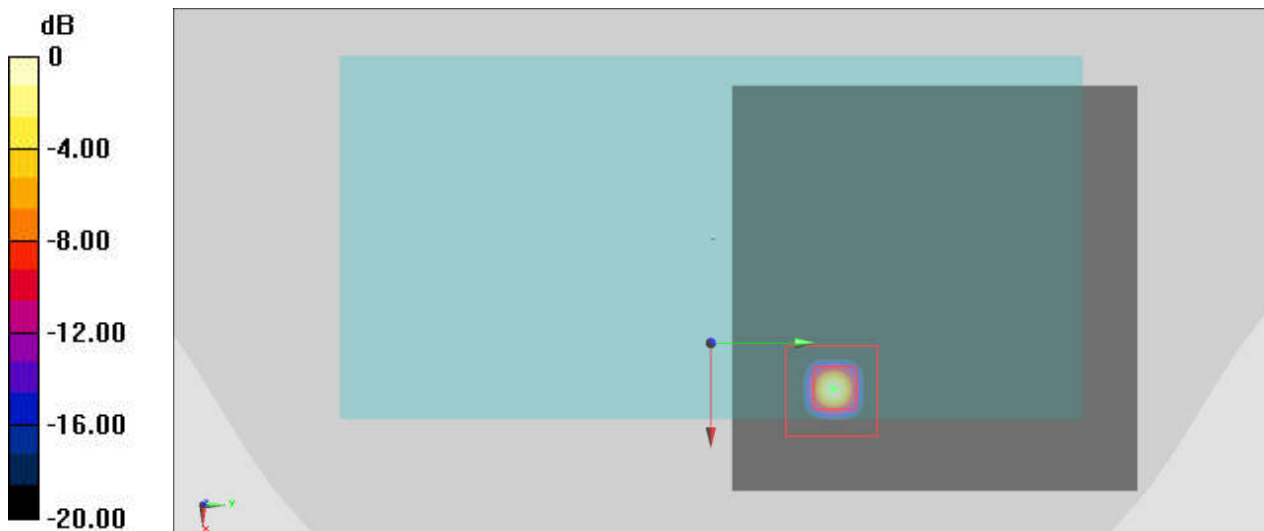
- Probe: EX3DV4 - SN7306; ConvF(7.54, 7.54, 7.54) @ 2441 MHz; Calibrated: 2022/7/28
- Sensor-Surface: 1.4mm (Mechanical Surface Detection)
- Electronics: DAE4 Sn853; Calibrated: 2022/7/20
- Phantom: Twin-SAM V5.0 (30deg probe tilt)_Right; Type: QD 000 P40 CD; Serial: TP-1479
- Measurement SW: DASY52, Version52.10 (4); SEMCAD X Version 14.6.14 (7483)

Area Scan (81x81x1): Interpolated grid: $dx=1.200 \text{ mm}$, $dy=1.200 \text{ mm}$

Reference Value = 0.6100 V/m; Power Drift = -0.11 dB

Fast SAR: SAR(1 g) = 2.99e-005 W/kg; SAR(10 g) = 5.36e-006 W/kg

Maximum value of SAR (interpolated) = 0.000176 W/kg



0 dB = 0.000176 W/kg = -37.54 dBW/kg

#15_WLAN5GHz_802.11a 6Mbps_Right Side_0mm_Ch60;Ant 9+8

Communication System: 802.11a; Frequency: 5300 MHz; Duty Cycle: 1:1

Medium: HSL_5G_220810 Medium parameters used: $f = 5300$ MHz; $\sigma = 4.763$ S/m; $\epsilon_r = 36.645$; $\rho = 1000$ kg/m³

Ambient Temperature : 23.5 °C ; Liquid Temperature : 22.5 °C

DASY5 Configuration:

- Probe: EX3DV4 - SN7306; ConvF(5.34, 5.34, 5.34) @ 5300 MHz; Calibrated: 2022/7/28
- Sensor-Surface: 1.4mm (Mechanical Surface Detection)
- Electronics: DAE4 Sn853; Calibrated: 2022/7/20
- Phantom: SAM_Left; Type: QD000P40CD; Serial: TP:1801
- Measurement SW: DASY52, Version 52.10 (4); SEMCAD X Version 14.6.14 (7501)

Area Scan (61x81x1): Interpolated grid: dx=1.000 mm, dy=1.000 mm

Maximum value of SAR (interpolated) = 8.90 W/kg

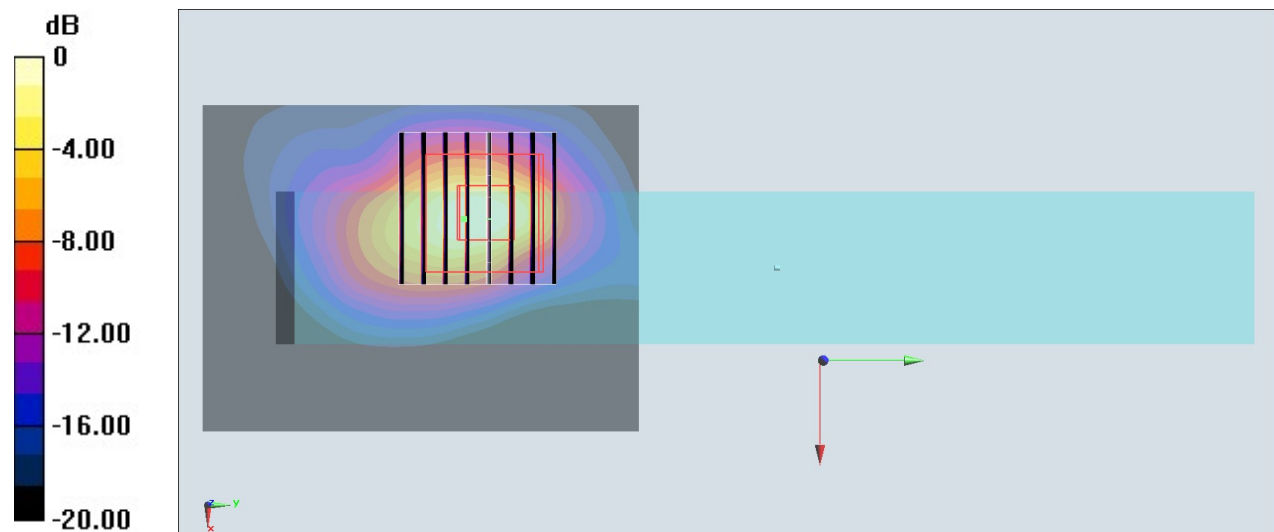
Zoom Scan (8x8x7)/Cube 0: Measurement grid: dx=4mm, dy=4mm, dz=1.4mm

Reference Value = 17.30 V/m; Power Drift = 0.01 dB

Peak SAR (extrapolated) = 14.4 W/kg

SAR(1 g) = 2.89 W/kg; SAR(10 g) = 0.933 W/kg

Maximum value of SAR (measured) = 8.73 W/kg



0 dB = 8.73 W/kg = 9.41 dBW/kg

#16_WLAN5GHz_802.11n-HT40 MCS0_Right Side_0mm_Ch142;Ant 9+8

Communication System: 802.11n; Frequency: 5710 MHz; Duty Cycle: 1:1

Medium: HSL_5G_220810 Medium parameters used: $f = 5710$ MHz; $\sigma = 5.173$ S/m; $\epsilon_r = 36.086$; $\rho = 1000$ kg/m³

Ambient Temperature : 23.5 °C ; Liquid Temperature : 22.5 °C

DASY5 Configuration:

- Probe: EX3DV4 - SN7306; ConvF(4.96, 4.96, 4.96) @ 5710 MHz; Calibrated: 2022/7/28
- Sensor-Surface: 1.4mm (Mechanical Surface Detection)
- Electronics: DAE4 Sn853; Calibrated: 2022/7/20
- Phantom: SAM_Left; Type: QD000P40CD; Serial: TP:1801
- Measurement SW: DASY52, Version 52.10 (4); SEMCAD X Version 14.6.14 (7501)

Area Scan (61x81x1): Interpolated grid: dx=1.000 mm, dy=1.000 mm

Maximum value of SAR (interpolated) = 8.08 W/kg

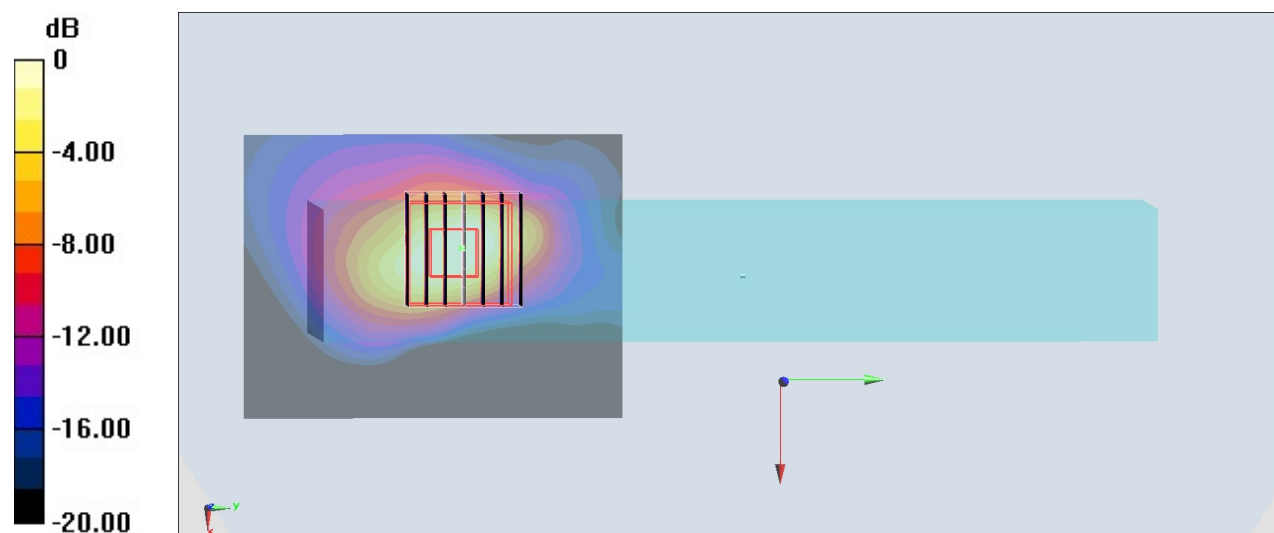
Zoom Scan (7x7x7)/Cube 0: Measurement grid: dx=4mm, dy=4mm, dz=1.4mm

Reference Value = 21.18 V/m; Power Drift = 0.14 dB

Peak SAR (extrapolated) = 11.8 W/kg

SAR(1 g) = 2.78 W/kg; SAR(10 g) = 0.863 W/kg

Maximum value of SAR (measured) = 6.79 W/kg



0 dB = 6.79 W/kg = 8.32 dBW/kg

#17_WLAN5GHz_802.11a 6Mbps_Right Side_0mm_Ch165;Ant 9+8

Communication System: 802.11a; Frequency: 5825 MHz; Duty Cycle: 1:1.008

Medium: HSL_5G_220810 Medium parameters used: $f = 5825$ MHz; $\sigma = 5.296$ S/m; $\epsilon_r = 35.912$; $\rho = 1000$ kg/m³

Ambient Temperature : 23.5 °C ; Liquid Temperature : 22.5 °C

DASY5 Configuration:

- Probe: EX3DV4 - SN7306; ConvF(4.96, 4.96, 4.96) @ 5825 MHz; Calibrated: 2022/7/28
- Sensor-Surface: 1.4mm (Mechanical Surface Detection)
- Electronics: DAE4 Sn853; Calibrated: 2022/7/20
- Phantom: SAM_Left; Type: QD000P40CD; Serial: TP:1801
- Measurement SW: DASY52, Version 52.10 (4); SEMCAD X Version 14.6.14 (7501)

Area Scan (61x81x1): Interpolated grid: dx=1.000 mm, dy=1.000 mm

Maximum value of SAR (interpolated) = 5.43 W/kg

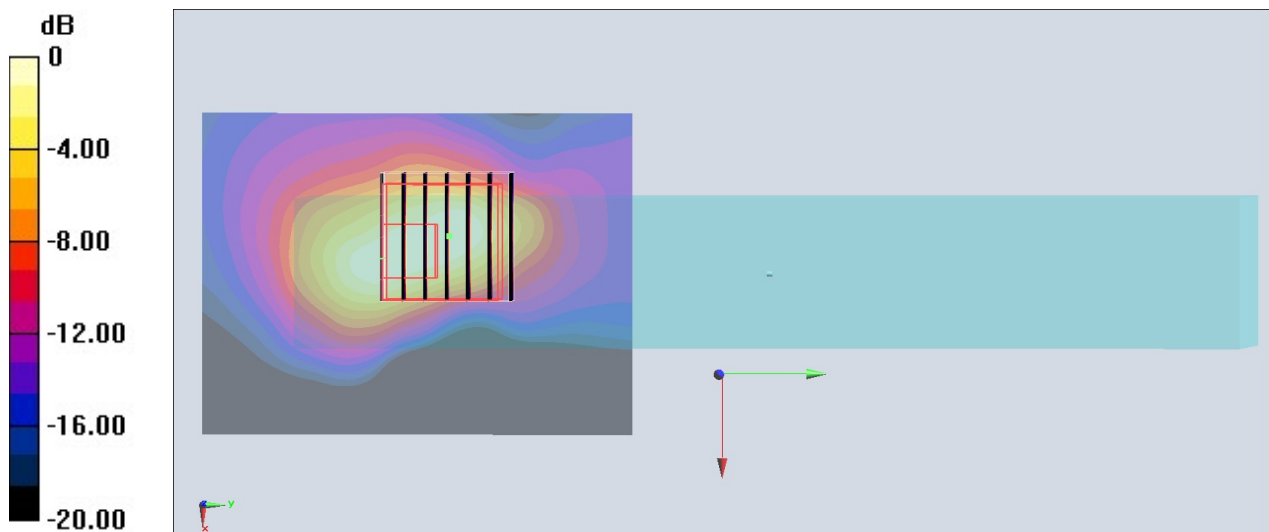
Zoom Scan (7x7x7)/Cube 0: Measurement grid: dx=4mm, dy=4mm, dz=1.4mm

Reference Value = 27.61 V/m; Power Drift = 0.14 dB

Peak SAR (extrapolated) = 9.12 W/kg

SAR(1 g) = 2.05 W/kg; SAR(10 g) = 0.636 W/kg

Maximum value of SAR (measured) = 5.06 W/kg



0 dB = 5.06 W/kg = 7.04 dBW/kg

#18_WLAN6GHz_802.11ac-VHT160 MCS0_Right Side_0mm_Ch15;Ant 9+8

Communication System: U-NII-5; Frequency: 6025.0 ; Duty Cycle: 1:1.018

Medium: HSL_6G_220825 Medium parameters used: $f = 6025.0$ MHz; $\sigma = 5.55$ S/m; $\epsilon_r = 36.6$

Ambient Temperature: 23.5°C; Liquid Temperature: 22.5°C

DASY6 Configuration:

- Probe: EX3DV4 - SN3642; ConvF(5.0, 5.0, 5.0); Calibrated: 2022-04-28
- Sensor-Surface: 1.4 mm
- Electronics: DAE4 Sn316; Calibrated: 2022-01-26
- Phantom: ELI V5.0 (20deg probe tilt); Serial: 1238; Section: Flat
- Measurement Software: cDASY6 V6.6.0.13926
- UID: WLAN, 10755-AAC
- MAIA: Area Scan: N/A; Zoom Scan: N/A

Area Scan (85.0 mm x 136.0 mm): Measurement Grid: 8.5 mm x 8.5 mm

SAR (1g) = 0.532 W/kg; SAR (10g) = 0.168 W/kg;

Zoom Scan (23.8 mm x 23.8 mm x 22.0 mm): Measurement Grid: 3.4 mm x 3.4 mm x 1.4 mm

Power Drift = -0.16 dB

SAR (1g) = 0.538 W/kg; SAR (8g) = 0.187 W/kg; SAR (10g) = 0.162 W/kg;

psAPD (1.0cm², sq) = 5.38 [W/m²]; psAPD (4.0cm², sq) = 3.75 [W/m²]

