

#01_WLAN2.4GHz_802.11b 1Mbps_Left Cheek_Ch6;Ant 2

Communication System: 802.11b; Frequency: 2437 MHz; Duty Cycle: 1:1

Medium: HSL_2450_180814 Medium parameters used: $f = 2437$ MHz; $\sigma = 1.856$ S/m; $\epsilon_r = 40.671$; $\rho = 1000$ kg/m³

Ambient Temperature : 23.4 °C; Liquid Temperature : 22.4 °C

DASY5 Configuration:

- Probe: EX3DV4 - SN3976; ConvF(7.75, 7.75, 7.75); Calibrated: 2018/1/23
- Sensor-Surface: 1.4mm (Mechanical Surface Detection)
- Electronics: DAE4 Sn1424; Calibrated: 2018/1/18
- Phantom: SAM_Left; Type: QD000P40CD; Serial: TP:1815
- Measurement SW: DASY52, Version 52.10 (1); SEMCAD X Version 14.6.11 (7439)

Area Scan (81x121x1): Interpolated grid: dx=1.200 mm, dy=1.200 mm

Maximum value of SAR (interpolated) = 0.735 W/kg

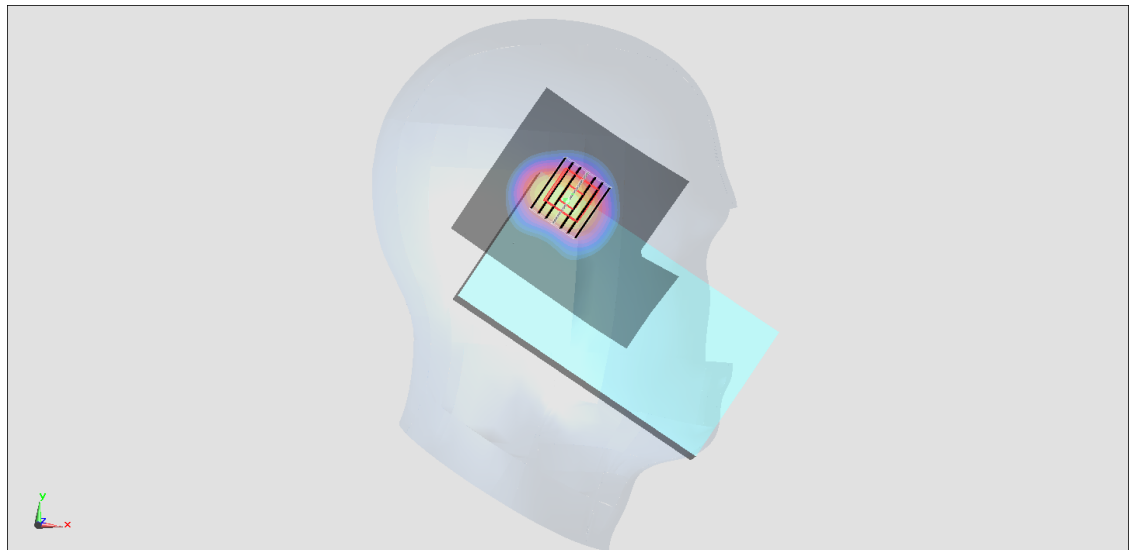
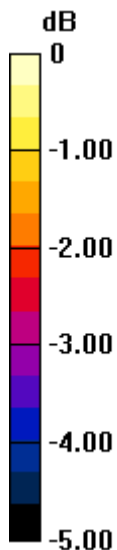
Zoom Scan (7x8x7)/Cube 0: Measurement grid: dx=5mm, dy=5mm, dz=5mm

Reference Value = 21.61 V/m; Power Drift = -0.03 dB

Peak SAR (extrapolated) = 1.07 W/kg

SAR(1 g) = 0.563 W/kg; SAR(10 g) = 0.305 W/kg

Maximum value of SAR (measured) = 0.854 W/kg



0 dB = 0.854 W/kg = -0.69 dBW/kg

#02_WLAN5GHz_802.11ac-VHT80 MCS0_Right Tilted_Ch58;Ant 2

Communication System: 802.11ac ; Frequency: 5290 MHz;Duty Cycle: 1:1.140

Medium: HSL_5G_180811 Medium parameters used : $f = 5290$ MHz; $\sigma = 4.685$ S/m; $\epsilon_r = 36.429$; $\rho = 1000$ kg/m³

Ambient Temperature : 23.6 °C ; Liquid Temperature : 22.6 °C

DASY5 Configuration:

- Probe: EX3DV4 - SN3925; ConvF(5.08, 5.08, 5.08); Calibrated: 2018/5/31
- Sensor-Surface: 1.4mm (Mechanical Surface Detection)
- Electronics: DAE3 Sn495; Calibrated: 2018/5/24
- Phantom: SAM_Left; Type: QD000P40CD; Serial: TP:1815
- Measurement SW: DASY52, Version 52.10 (1);SEMCAD X Version 14.6.11 (7439)

Area Scan (141x201x1): Interpolated grid: dx=1.000 mm, dy=1.000 mm

Maximum value of SAR (interpolated) = 0.388 W/kg

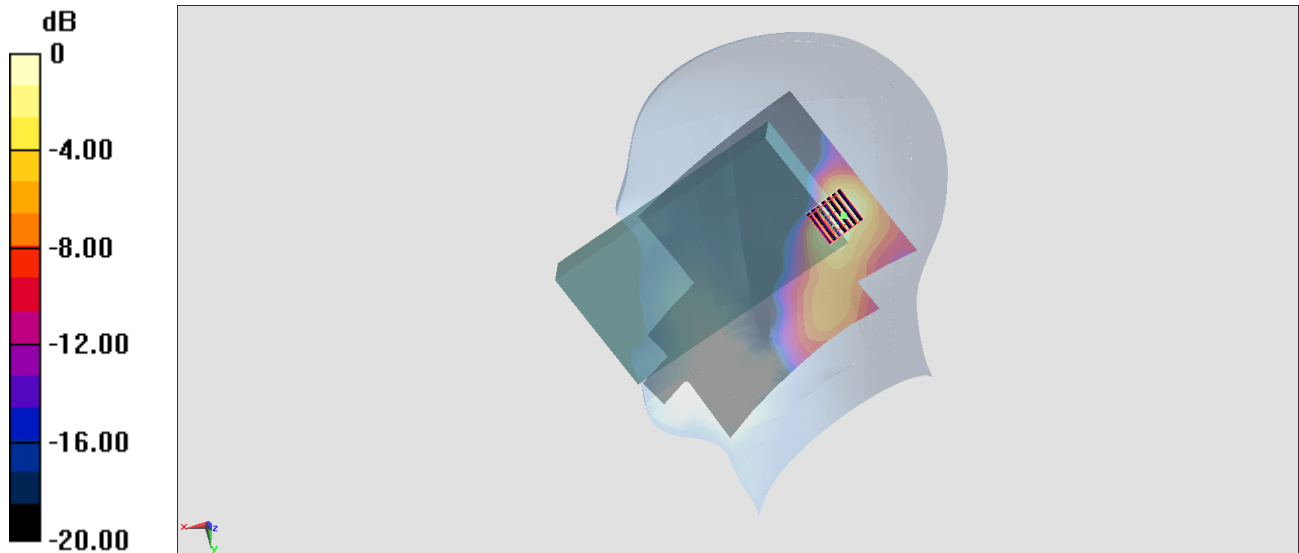
Zoom Scan (7x7x7)/Cube 0: Measurement grid: dx=4mm, dy=4mm, dz=1.4mm

Reference Value = 7.541 V/m; Power Drift = 0.04 dB

Peak SAR (extrapolated) = 0.634 W/kg

SAR(1 g) = 0.192 W/kg; SAR(10 g) = 0.068 W/kg

Maximum value of SAR (measured) = 0.417 W/kg



0 dB = 0.417 W/kg = -3.80 dBW/kg

#03_WLAN5GHz_802.11ac-VHT80 MCS0_Left Cheek_Ch122;Ant 2

Communication System: 802.11ac ; Frequency: 5610 MHz;Duty Cycle: 1:1.140

Medium: HSL_5G_180811 Medium parameters used : $f = 5610$ MHz; $\sigma = 5.002$ S/m; $\epsilon_r = 35.991$; $\rho = 1000$ kg/m³

Ambient Temperature : 23.6 °C ; Liquid Temperature : 22.6 °C

DASY5 Configuration:

- Probe: EX3DV4 - SN3925; ConvF(4.64, 4.64, 4.64); Calibrated: 2018/5/31
- Sensor-Surface: 1.4mm (Mechanical Surface Detection)
- Electronics: DAE3 Sn495; Calibrated: 2018/5/24
- Phantom: SAM_Left; Type: QD000P40CD; Serial: TP:1815
- Measurement SW: DASY52, Version 52.10 (1);SEMCAD X Version 14.6.11 (7439)

Area Scan (81x91x1): Interpolated grid: dx=1.000 mm, dy=1.000 mm

Maximum value of SAR (interpolated) = 0.332 W/kg

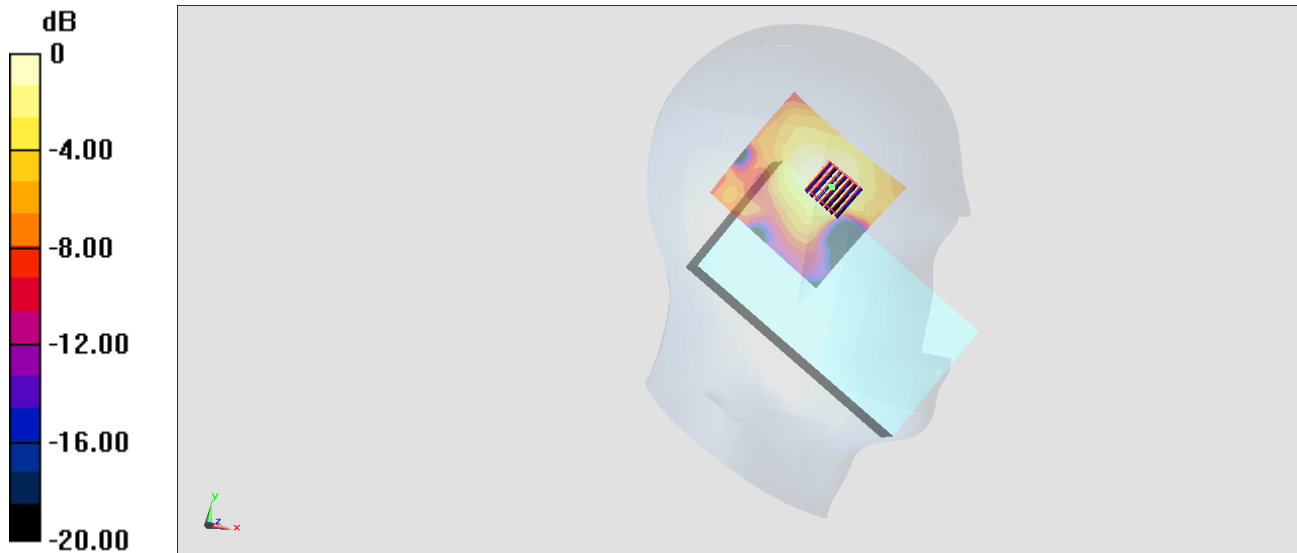
Zoom Scan (7x7x7)/Cube 0: Measurement grid: dx=4mm, dy=4mm, dz=1.4mm

Reference Value = 7.544 V/m; Power Drift = -0.10 dB

Peak SAR (extrapolated) = 0.528 W/kg

SAR(1 g) = 0.151 W/kg; SAR(10 g) = 0.061 W/kg

Maximum value of SAR (measured) = 0.326 W/kg



0 dB = 0.326 W/kg = -4.87 dBW/kg

#04_WLAN5GHz_802.11ac-VHT80 MCS0_Left Cheek_Ch155;MIMO Ant 2

Communication System: 802.11ac ; Frequency: 5775 MHz;Duty Cycle: 1:1.145

Medium: HSL_5G_180826 Medium parameters used: $f = 5775$ MHz; $\sigma = 5.067$ S/m; $\epsilon_r = 36.508$; $\rho = 1000$ kg/m³

Ambient Temperature : 23.5 °C ; Liquid Temperature : 22.5 °C

DASY5 Configuration

- Probe: EX3DV4 - SN3931;ConvF(4.95, 4.95, 4.95);Calibrated: 2017/9/29
- Sensor-Surface: 1.4mm (Mechanical Surface Detection)
- Electronics: DAE4 Sn1399; Calibrated: 2017/11/16
- Phantom: SAM_Left; Type: QD000P40CD; Serial: S/N:1801
- Measurement SW: DASY52, Version 52.10 (1); SEMCAD X Version 14.6.11 (7439)

Area Scan (121x121x1): Interpolated grid: dx=1.000 mm, dy=1.000 mm

Maximum value of SAR (interpolated) = 0.274 W/kg

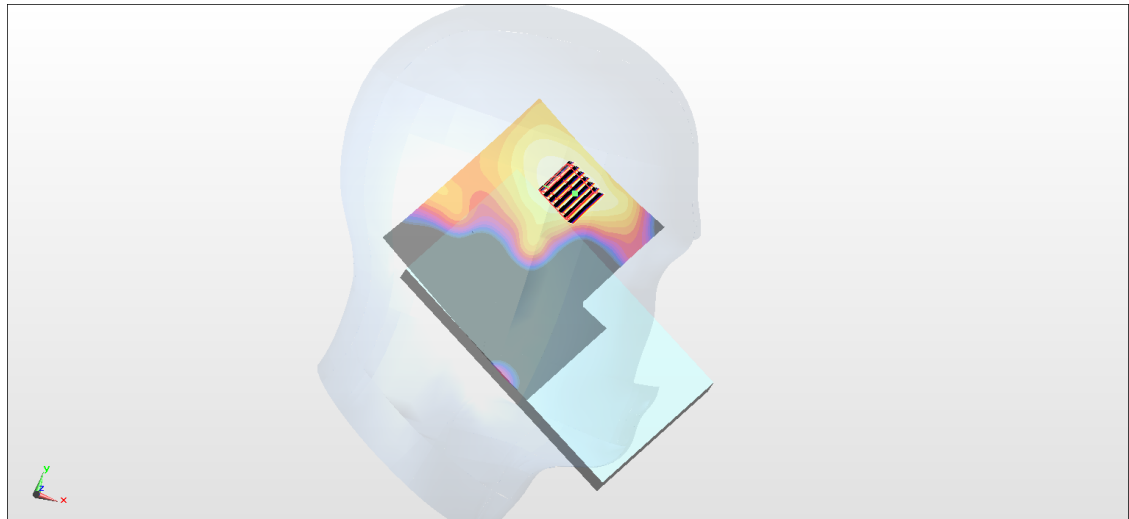
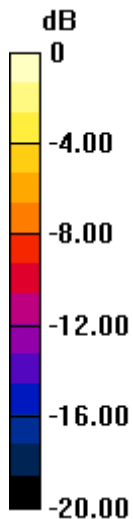
Zoom Scan (7x7x7)/Cube 0: Measurement grid: dx=4mm, dy=4mm, dz=1.4mm

Reference Value = 6.998 V/m; Power Drift = 0.06 dB

Peak SAR (extrapolated) = 0.435 W/kg

SAR(1 g) = 0.140 W/kg; SAR(10 g) = 0.047 W/kg

Maximum value of SAR (measured) = 0.260 W/kg



0 dB = 0.260 W/kg = -5.85 dBW/kg

#05_WLAN2.4GHz_802.11b 1Mbps_Back_15mm_Ch6;Ant 1

Communication System: 802.11b; Frequency: 2437 MHz; Duty Cycle: 1:1

Medium: MSL_2450_180814 Medium parameters used: $f = 2437$ MHz; $\sigma = 1.984$ S/m; $\epsilon_r = 52.446$; $\rho = 1000$ kg/m³

Ambient Temperature : 23.4 °C ; Liquid Temperature : 22.4 °C

DASY5 Configuration:

- Probe: EX3DV4 - SN3976; ConvF(7.8, 7.8, 7.8); Calibrated: 2018/1/23
- Sensor-Surface: 1.4mm (Mechanical Surface Detection)
- Electronics: DAE4 Sn1424; Calibrated: 2018/1/18
- Phantom: SAM_Left; Type: QD000P40CD; Serial: TP:1815
- Measurement SW: DASY52, Version 52.10 (1); SEMCAD X Version 14.6.11 (7439)

Area Scan (101x81x1): Interpolated grid: dx=1.200 mm, dy=1.200 mm

Maximum value of SAR (interpolated) = 0.607 W/kg

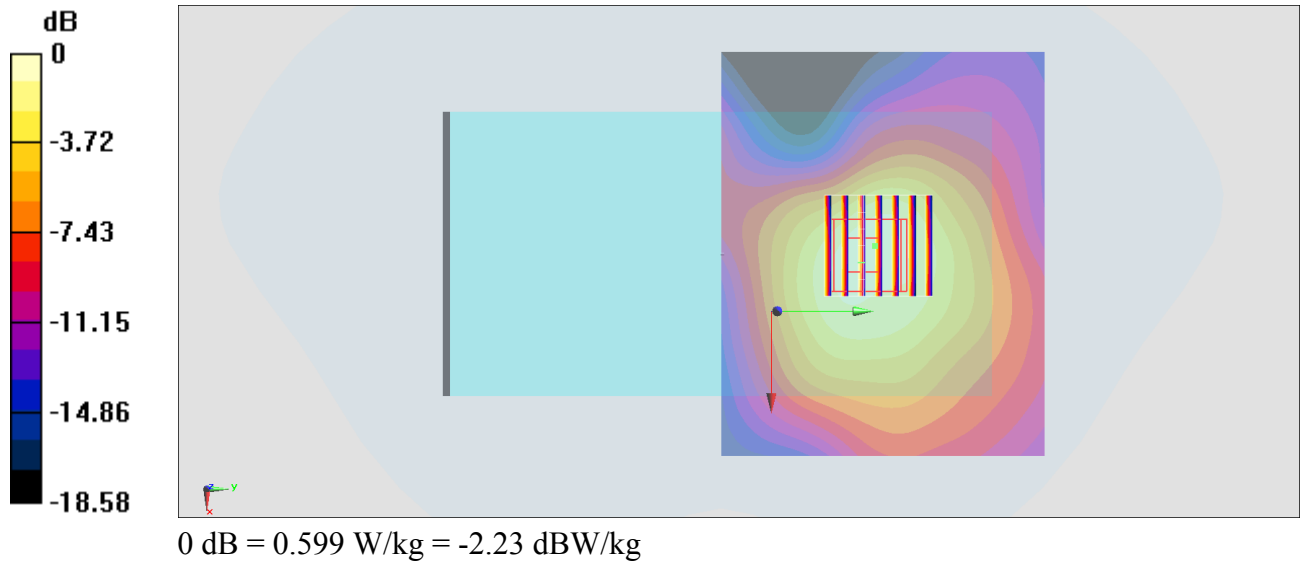
Zoom Scan (7x7x7)/Cube 0: Measurement grid: dx=5mm, dy=5mm, dz=5mm

Reference Value = 17.57 V/m; Power Drift = 0.09 dB

Peak SAR (extrapolated) = 0.738 W/kg

SAR(1 g) = 0.403 W/kg; SAR(10 g) = 0.230 W/kg

Maximum value of SAR (measured) = 0.599 W/kg



#06_WLAN5GHz_802.11ac-VHT80 MCS0_Back_15mm_Ch58;Ant 2

Communication System: 802.11ac ; Frequency: 5290 MHz;Duty Cycle: 1:1.140

Medium: MSL_5G_180813 Medium parameters used : $f = 5290$ MHz; $\sigma = 5.568$ S/m; $\epsilon_r = 49.152$; $\rho = 1000$ kg/m³

Ambient Temperature : 23.2 °C ; Liquid Temperature : 22.2 °C

DASY5 Configuration:

- Probe: EX3DV4 - SN3976; ConvF(4.92, 4.92, 4.92); Calibrated: 2018/1/23
- Sensor-Surface: 1.4mm (Mechanical Surface Detection)
- Electronics: DAE4 Sn1424; Calibrated: 2018/1/18
- Phantom: SAM_Left; Type: QD000P40CD; Serial: TP:1815
- Measurement SW: DASY52, Version 52.10 (1);SEMCAD X Version 14.6.11 (7439)

Area Scan (121x81x1): Interpolated grid: dx=1.000 mm, dy=1.000 mm

Maximum value of SAR (interpolated) = 1.55 W/kg

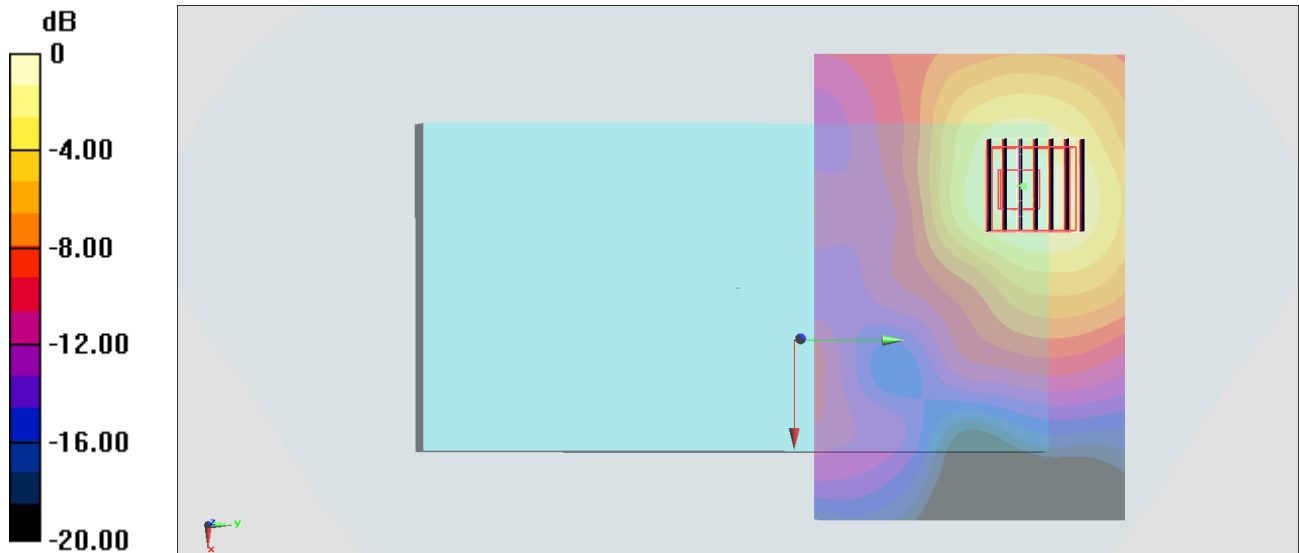
Zoom Scan (7x7x7)/Cube 0: Measurement grid: dx=4mm, dy=4mm, dz=1.4mm

Reference Value = 18.35 V/m; Power Drift = 0.00 dB

Peak SAR (extrapolated) = 2.84 W/kg

SAR(1 g) = 0.799 W/kg; SAR(10 g) = 0.342 W/kg

Maximum value of SAR (measured) = 1.68 W/kg



0 dB = 1.68 W/kg = 2.25 dBW/kg

#07_WLAN5GHz_802.11ac-VHT80 MCS0_Back_15mm_Ch138;Ant 2

Communication System: 802.11ac ; Frequency: 5690 MHz;Duty Cycle: 1:1.140

Medium: MSL_5G_180813 Medium parameters used : $f = 5690$ MHz; $\sigma = 6.101$ S/m; $\epsilon_r = 48.488$; $\rho = 1000$ kg/m³

Ambient Temperature : 23.2 °C ; Liquid Temperature : 22.2 °C

DASY5 Configuration:

- Probe: EX3DV4 - SN3976; ConvF(4.46, 4.46, 4.46); Calibrated: 2018/1/23
- Sensor-Surface: 1.4mm (Mechanical Surface Detection)
- Electronics: DAE4 Sn1424; Calibrated: 2018/1/18
- Phantom: SAM_Left; Type: QD000P40CD; Serial: TP:1815
- Measurement SW: DASY52, Version 52.10 (1);SEMCAD X Version 14.6.11 (7439)

Area Scan (121x101x1): Interpolated grid: dx=1.000 mm, dy=1.000 mm

Maximum value of SAR (interpolated) = 2.24 W/kg

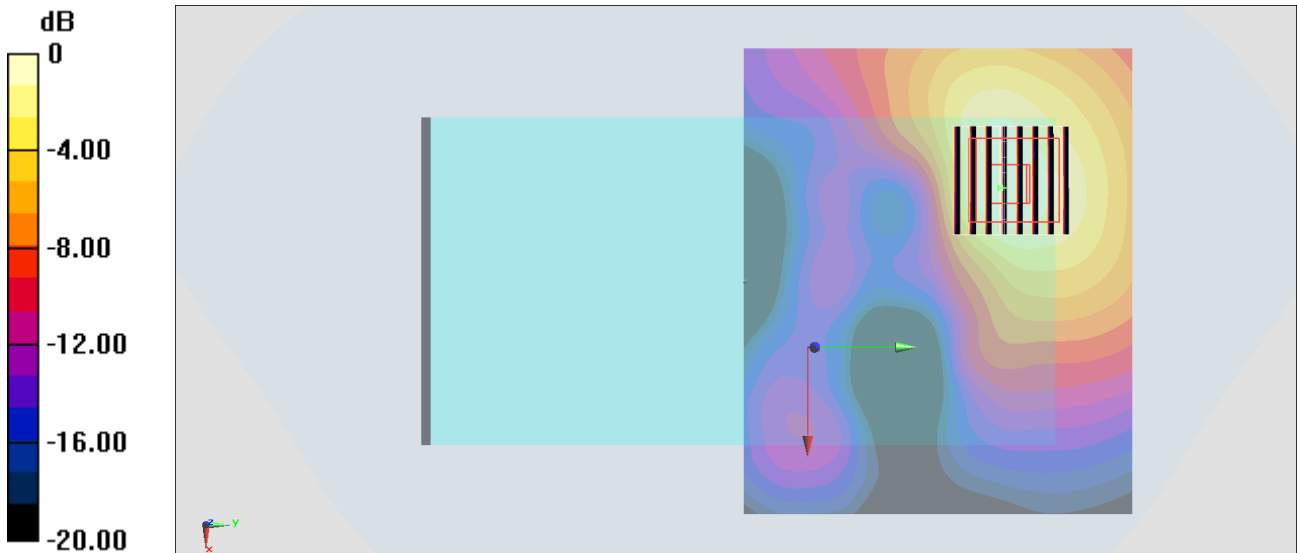
Zoom Scan (8x8x7)/Cube 0: Measurement grid: dx=4mm, dy=4mm, dz=1.4mm

Reference Value = 20.21 V/m; Power Drift = -0.01 dB

Peak SAR (extrapolated) = 3.86 W/kg

SAR(1 g) = 0.970 W/kg; SAR(10 g) = 0.406 W/kg

Maximum value of SAR (measured) = 2.12 W/kg



0 dB = 2.12 W/kg = 3.26 dBW/kg

#08_WLAN5GHz_802.11n-HT40 MCS0_Back_15mm_Ch151;MIMO Ant 2

Communication System: 802.11n; Frequency: 5755 MHz; Duty Cycle: 1:1.101

Medium: MSL_5G_180825 Medium parameters used : $f = 5755$ MHz; $\sigma = 6.094$ S/m; $\epsilon_r = 46.576$; $\rho = 1000$ kg/m³

Ambient Temperature : 23.5 °C; Liquid Temperature : 22.5 °C

DASY5 Configuration

- Probe: EX3DV4 - SN3931; ConvF(4.32, 4.32, 4.32); Calibrated: 2017/9/29
- Sensor-Surface: 1.4mm (Mechanical Surface Detection)
- Electronics: DAE4 Sn1399; Calibrated: 2017/11/16
- Phantom: SAM_Right; Type: QD000P40CD; Serial: S/N:1796
- Measurement SW: DASY52, Version 52.10 (1); SEMCAD X Version 14.6.11 (7439)

Area Scan (121x181x1): Interpolated grid: dx=1.000 mm, dy=1.000 mm

Maximum value of SAR (interpolated) = 2.24 W/kg

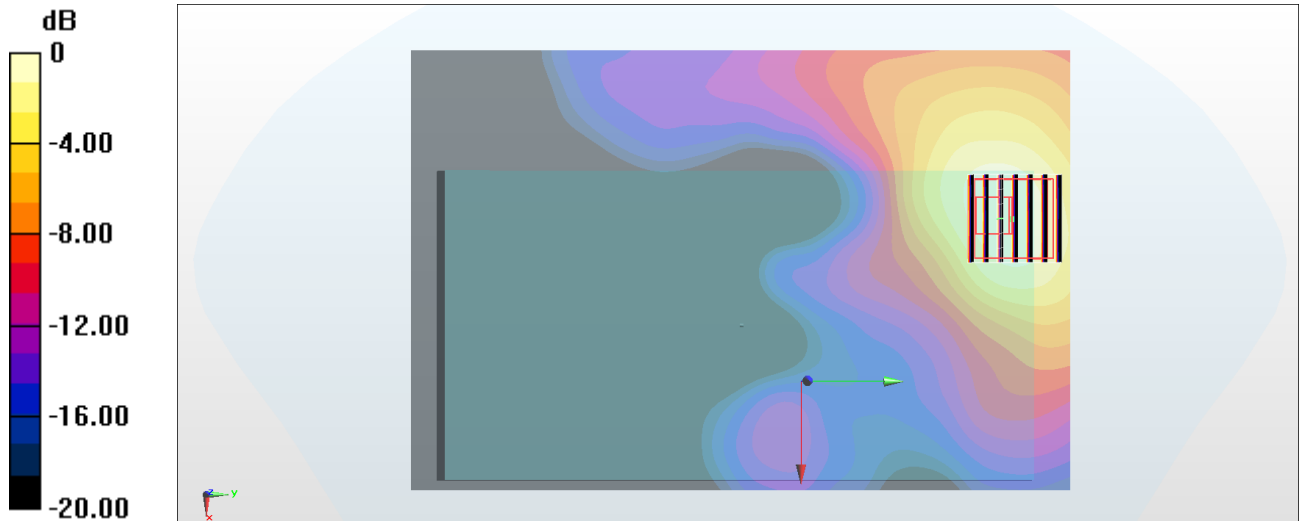
Zoom Scan (7x7x7)/Cube 0: Measurement grid: dx=4mm, dy=4mm, dz=1.4mm

Reference Value = 1.181 V/m; Power Drift = 0.19 dB

Peak SAR (extrapolated) = 4.05 W/kg

SAR(1 g) = 1.23 W/kg; SAR(10 g) = 0.446 W/kg

Maximum value of SAR (measured) = 2.33 W/kg



0 dB = 2.33 W/kg = 3.67 dBW/kg