

#01_WLAN2.4GHz_802.11b 1Mbps_Left Tilted_Ch6;Ant 1

Communication System: 802.11b ; Frequency: 2437 MHz;Duty Cycle: 1:1.015

Medium: HSL_2450_160717 Medium parameters used: $f = 2437$ MHz; $\sigma = 1.746$ S/m; $\epsilon_r = 40.546$; $\rho = 1000$ kg/m³

Ambient Temperature : 23.6 °C ; Liquid Temperature : 22.6 °C

DASY5 Configuration

- Probe: EX3DV4 - SN3925; ConvF(7.47, 7.47, 7.47); Calibrated: 2016/5/26;
- Sensor-Surface: 1.4mm (Mechanical Surface Detection)
- Electronics: DAE3 Sn495; Calibrated: 2016/5/27
- Phantom: SAM LEFT; Type: QD000P40CD; Serial: TP:1718
- Measurement SW: DASY52, Version 52.8 (7); SEMCAD X Version 14.6.10 (7164)

Area Scan (91x71x1): Interpolated grid: dx=1.200 mm, dy=1.200 mm

Maximum value of SAR (interpolated) = 0.542 W/kg

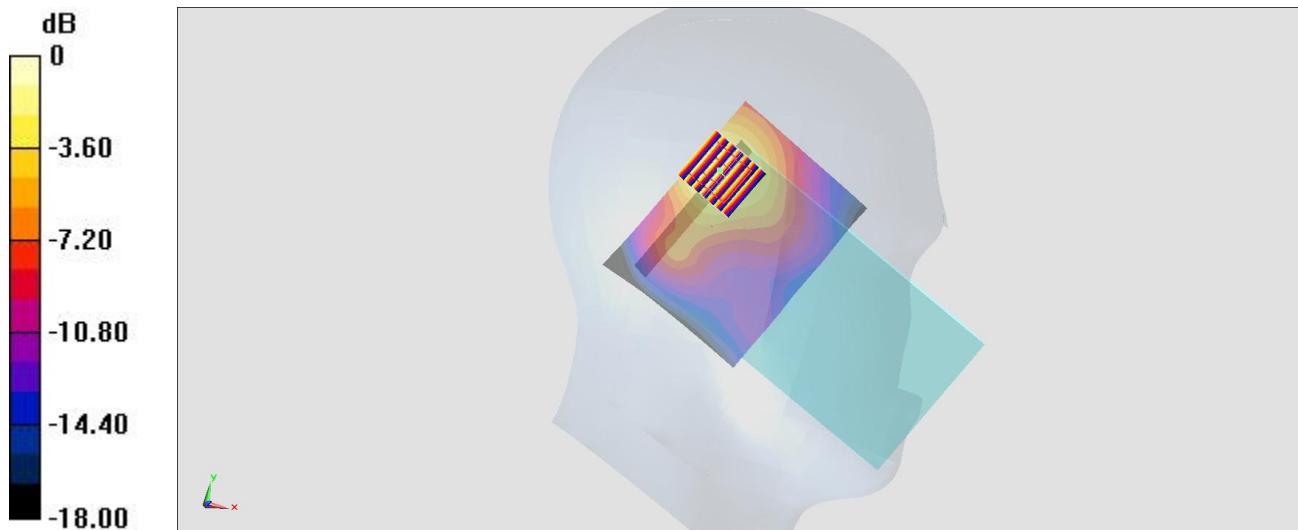
Zoom Scan (7x7x7)/Cube 0: Measurement grid: dx=5mm, dy=5mm, dz=5mm

Reference Value = 11.087 V/m; Power Drift = 0.02 dB

Peak SAR (extrapolated) = 0.657 W/kg

SAR(1 g) = 0.347 W/kg; SAR(10 g) = 0.187 W/kg

Maximum value of SAR (measured) = 0.537 W/kg



0 dB = 0.537 W/kg = -2.70 dBW/kg

#02_WLAN5GHz_802.11n-HT40 MCS0_Left Cheek_Ch54;Ant 1

Communication System: 802.11n; Frequency: 5270 MHz; Duty Cycle: 1:1.106

Medium: HSL_5G_160726 Medium parameters used: $f = 5270$ MHz; $\sigma = 4.525$ S/m; $\epsilon_r = 36.131$; $\rho = 1000$ kg/m³

Ambient Temperature : 23.5 °C; Liquid Temperature : 22.5 °C

DASY5 Configuration

- Probe: EX3DV4 - SN3955; ConvF(5.08, 5.08, 5.08); Calibrated: 2015/11/24;
- Sensor-Surface: 1.4mm (Mechanical Surface Detection)
- Electronics: DAE4 Sn778; Calibrated: 2016/5/12
- Phantom: SAM_RIGHT; Type: QD000P40CD; Serial: 1719
- Measurement SW: DASY52, Version 52.8 (7); SEMCAD X Version 14.6.10 (7164)

Area Scan (141x121x1): Interpolated grid: dx=1.000 mm, dy=1.000 mm

Maximum value of SAR (interpolated) = 0.458 W/kg

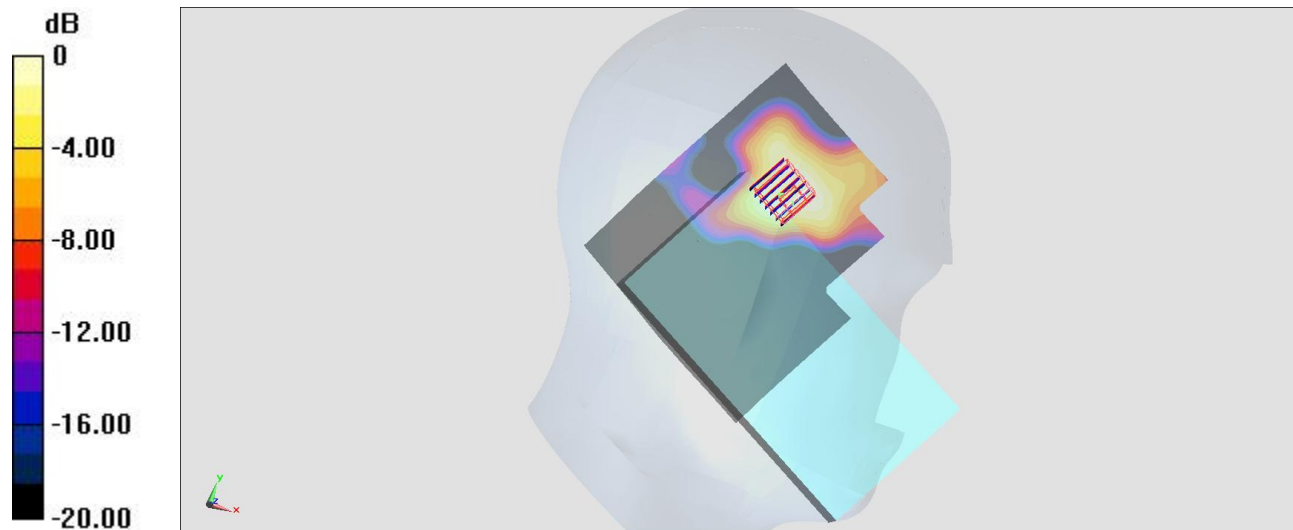
Zoom Scan (7x7x7)/Cube 0: Measurement grid: dx=4mm, dy=4mm, dz=1.4mm

Reference Value = 5.191 V/m; Power Drift = 0.14 dB

Peak SAR (extrapolated) = 0.539 W/kg

SAR(1 g) = 0.175 W/kg; SAR(10 g) = 0.074 W/kg

Maximum value of SAR (measured) = 0.366 W/kg



0 dB = 0.366 W/kg = -4.37 dBW/kg

#03_WLAN5GHz_802.11n-HT40 MCS0_Left Cheek_Ch134;Ant 1

Communication System: 802.11n; Frequency: 5670 MHz; Duty Cycle: 1:1.106

Medium: HSL_5G_160726 Medium parameters used: $f = 5670$ MHz; $\sigma = 4.918$ S/m; $\epsilon_r = 35.644$; $\rho = 1000$ kg/m³

Ambient Temperature : 23.5 °C; Liquid Temperature : 22.5 °C

DASY5 Configuration

- Probe: EX3DV4 - SN3955; ConvF(4.39, 4.39, 4.39); Calibrated: 2015/11/24;
- Sensor-Surface: 1.4mm (Mechanical Surface Detection)
- Electronics: DAE4 Sn778; Calibrated: 2016/5/12
- Phantom: SAM_RIGHT; Type: QD000P40CD; Serial: 1719
- Measurement SW: DASY52, Version 52.8 (7); SEMCAD X Version 14.6.10 (7164)

Area Scan (141x121x1): Interpolated grid: dx=1.000 mm, dy=1.000 mm

Maximum value of SAR (interpolated) = 0.406 W/kg

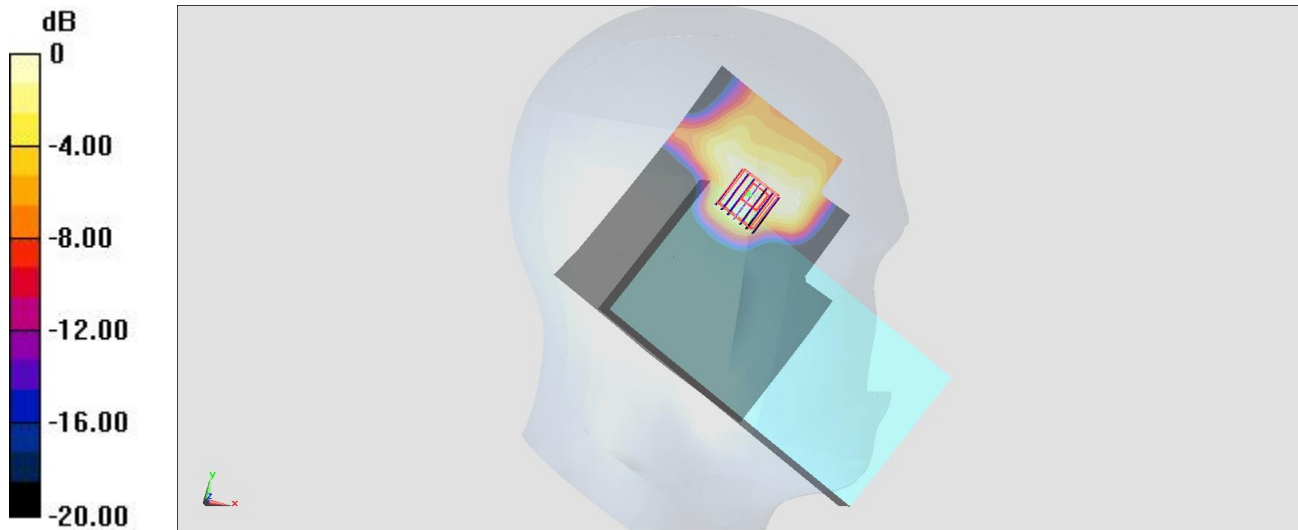
Zoom Scan (7x7x7)/Cube 0: Measurement grid: dx=4mm, dy=4mm, dz=1.4mm

Reference Value = 5.161 V/m; Power Drift = 0.06 dB

Peak SAR (extrapolated) = 0.496 W/kg

SAR(1 g) = 0.149 W/kg; SAR(10 g) = 0.061 W/kg

Maximum value of SAR (measured) = 0.314 W/kg



0 dB = 0.314 W/kg = -5.03 dBW/kg

#04_WLAN5GHz_802.11ac-VHT80 MCS0_Left Tilted_Ch155;Ant 2

Communication System: 802.11ac ; Frequency: 5775 MHz;Duty Cycle: 1:1.153

Medium: HSL_5G_160716 Medium parameters used: $f = 5775$ MHz; $\sigma = 5.026$ S/m; $\epsilon_r = 35.844$; $\rho = 1000$ kg/m³

Ambient Temperature : 23.4 °C; Liquid Temperature : 22.4 °C

DASY5 Configuration

- Probe: EX3DV4 - SN3925; ConvF(4.51, 4.51, 4.51); Calibrated: 2016/5/26;
- Sensor-Surface: 1.4mm (Mechanical Surface Detection)
- Electronics: DAE3 Sn495; Calibrated: 2016/5/27
- Phantom: SAM_RIGHT; Type: QD000P40CD; Serial: 1719
- Measurement SW: DASY52, Version 52.8 (7); SEMCAD X Version 14.6.10 (7164)

Area Scan (141x121x1): Interpolated grid: dx=1.000 mm, dy=1.000 mm

Maximum value of SAR (interpolated) = 0.243 W/kg

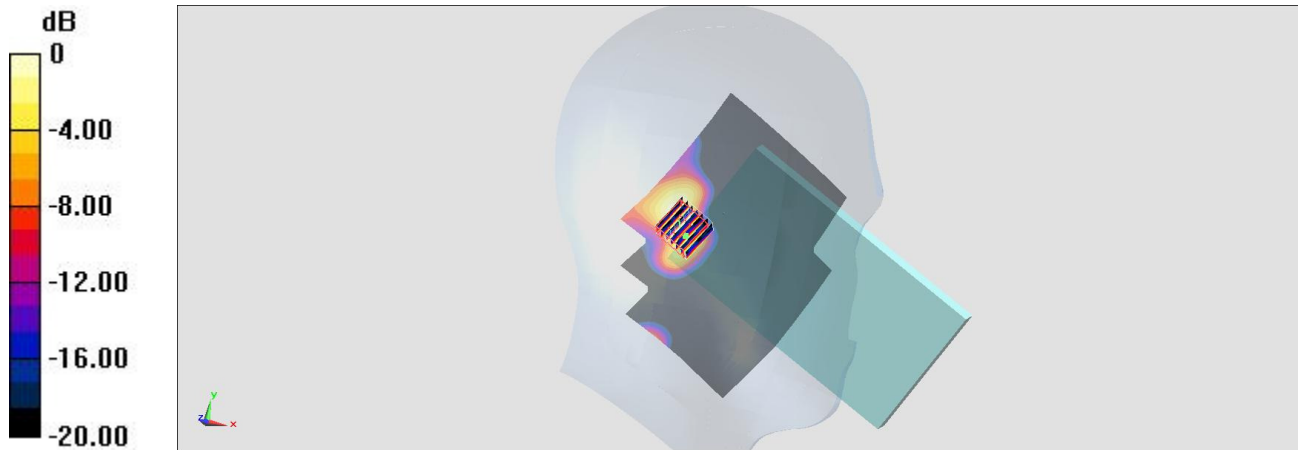
Zoom Scan (7x7x7)/Cube 0: Measurement grid: dx=4mm, dy=4mm, dz=1.4mm

Reference Value = 4.311 V/m; Power Drift = 0.13 dB

Peak SAR (extrapolated) = 0.448 W/kg

SAR(1 g) = 0.126 W/kg; SAR(10 g) = 0.044 W/kg

Maximum value of SAR (measured) = 0.289 W/kg



0 dB = 0.289 W/kg = -5.39 dBW/kg

#05_WLAN2.4GHz_802.11b 1Mbps_Back_10mm_Ch11;Ant 2

Communication System: 802.11b ; Frequency: 2462 MHz;Duty Cycle: 1:1.01

Medium: MSL_2450_160717 Medium parameters used: $f = 2462$ MHz; $\sigma = 2.001$ S/m; $\epsilon_r = 52.089$; $\rho = 1000$ kg/m³

Ambient Temperature : 23.6 °C; Liquid Temperature : 22.6 °C

DASY5 Configuration

- Probe: EX3DV4 - SN3925; ConvF(7.64, 7.64, 7.64); Calibrated: 2016/5/26;
- Sensor-Surface: 1.4mm (Mechanical Surface Detection)
- Electronics: DAE3 Sn495; Calibrated: 2016/5/27
- Phantom: SAM_RIGHT; Type: QD000P40CD; Serial: 1719
- Measurement SW: DASY52, Version 52.8 (7); SEMCAD X Version 14.6.10 (7164)

Area Scan (91x71x1): Interpolated grid: dx=1.200 mm, dy=1.200 mm

Maximum value of SAR (interpolated) = 0.555 W/kg

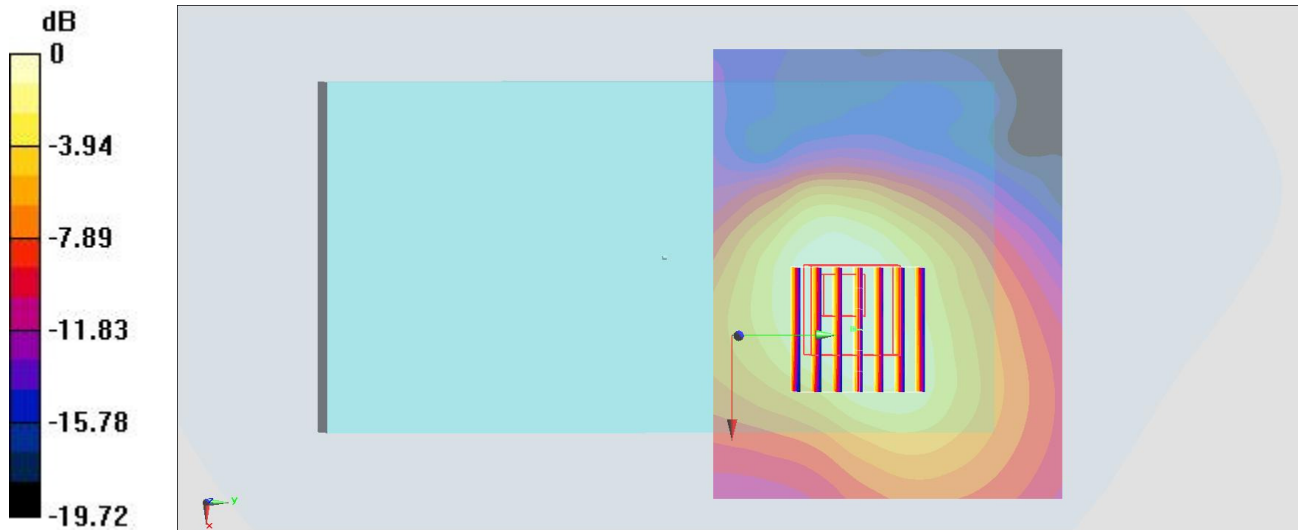
Zoom Scan (7x7x7)/Cube 0: Measurement grid: dx=5mm, dy=5mm, dz=5mm

Reference Value = 12.014 V/m; Power Drift = -0.03 dB

Peak SAR (extrapolated) = 0.614 W/kg

SAR(1 g) = 0.340 W/kg; SAR(10 g) = 0.197 W/kg

Maximum value of SAR (measured) = 0.499 W/kg



0 dB = 0.499 W/kg = -3.02 dBW/kg

#06_WLAN5GHz_802.11n-HT40 MCS0_Back_10mm_Ch54;Ant 1

Communication System: 802.11n ; Frequency: 5270 MHz;Duty Cycle: 1:1.106

Medium: MSL_5G_160725 Medium parameters used: $f = 5270$ MHz; $\sigma = 5.511$ S/m; $\epsilon_r = 46.713$; $\rho = 1000$ kg/m³

Ambient Temperature : 23.5 °C; Liquid Temperature : 22.5 °C

DASY5 Configuration

- Probe: EX3DV4 - SN3955; ConvF(4.42, 4.42, 4.42); Calibrated: 2015/11/24;
- Sensor-Surface: 1.4mm (Mechanical Surface Detection)
- Electronics: DAE4 Sn778; Calibrated: 2016/5/12
- Phantom: SAM LEFT; Type: QD000P40CD; Serial: TP:1718
- Measurement SW: DASY52, Version 52.8 (7); SEMCAD X Version 14.6.10 (7164)

Area Scan (121x101x1): Interpolated grid: dx=1.000 mm, dy=1.000 mm

Maximum value of SAR (interpolated) = 1.12 W/kg

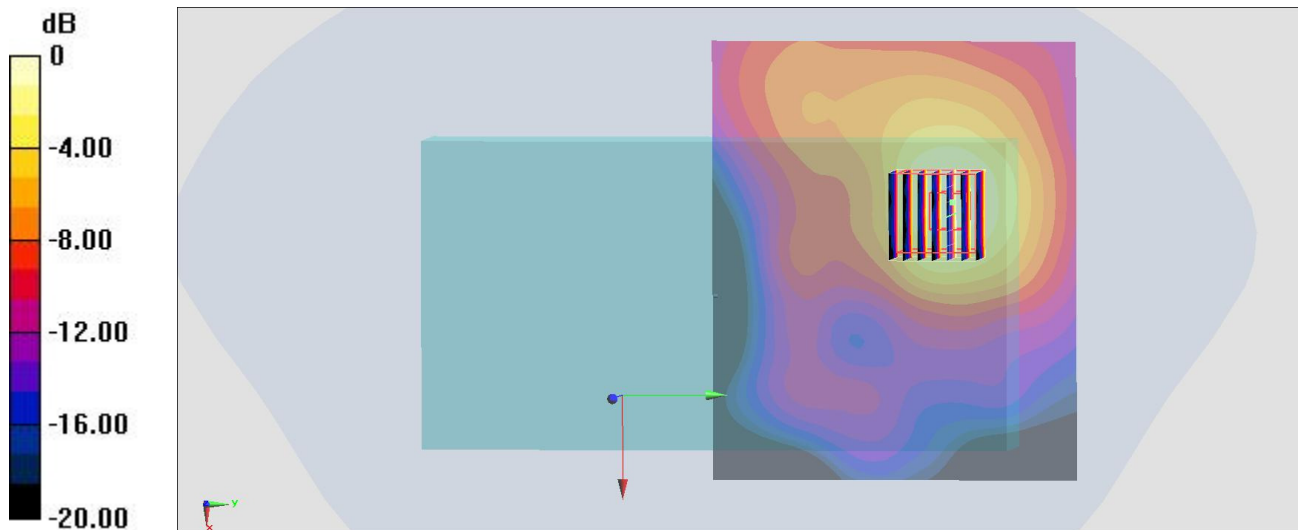
Zoom Scan (7x7x7)/Cube 0: Measurement grid: dx=4mm, dy=4mm, dz=1.4mm

Reference Value = 12.052 V/m; Power Drift = -0.11 dB

Peak SAR (extrapolated) = 1.98 W/kg

SAR(1 g) = 0.615 W/kg; SAR(10 g) = 0.257 W/kg

Maximum value of SAR (measured) = 1.29 W/kg



0 dB = 1.29 W/kg = 1.11 dBW/kg

#07_WLAN5GHz_802.11n-HT40 MCS0_Back_10mm_Ch110;Ant 1

Communication System: 802.11n; Frequency: 5550 MHz; Duty Cycle: 1:1.106

Medium: MSL_5G_160725 Medium parameters used: $f = 5550$ MHz; $\sigma = 5.865$ S/m; $\epsilon_r = 46.243$; $\rho = 1000$ kg/m³

Ambient Temperature : 23.5 °C; Liquid Temperature : 22.5 °C

DASY5 Configuration

- Probe: EX3DV4 - SN3955; ConvF(3.81, 3.81, 3.81); Calibrated: 2015/11/24;
- Sensor-Surface: 1.4mm (Mechanical Surface Detection)
- Electronics: DAE4 Sn778; Calibrated: 2016/5/12
- Phantom: SAM LEFT; Type: QD000P40CD; Serial: TP:1718
- Measurement SW: DASY52, Version 52.8 (7); SEMCAD X Version 14.6.10 (7164)

Area Scan (141x101x1): Interpolated grid: dx=1.000 mm, dy=1.000 mm

Maximum value of SAR (interpolated) = 1.61 W/kg

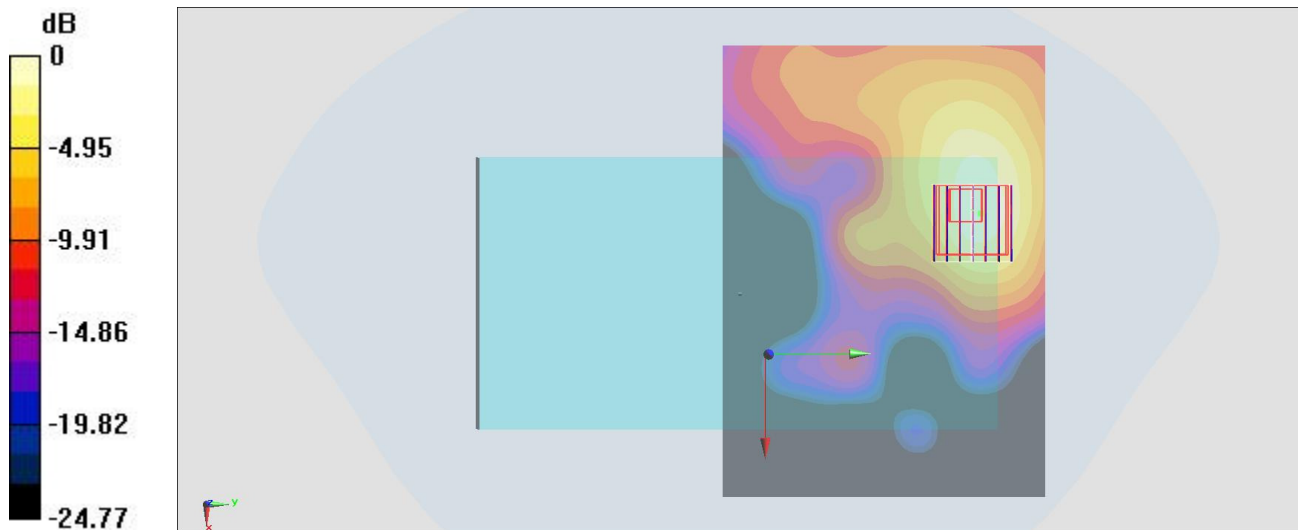
Zoom Scan (7x7x7)/Cube 0: Measurement grid: dx=4mm, dy=4mm, dz=1.4mm

Reference Value = 20.494 V/m; Power Drift = -0.14 dB

Peak SAR (extrapolated) = 2.70 W/kg

SAR(1 g) = 0.807 W/kg; SAR(10 g) = 0.333 W/kg

Maximum value of SAR (measured) = 1.76 W/kg



0 dB = 1.76 W/kg = 2.46 dBW/kg

#08_WLAN5GHz_802.11ac-VHT80 MCS0_Back_10mm_Ch155;Ant 1

Communication System: 802.11ac; Frequency: 5775 MHz; Duty Cycle: 1:1.153

Medium: MSL_5G_160717 Medium parameters used: $f = 5775$ MHz; $\sigma = 6.109$ S/m; $\epsilon_r = 46.357$; $\rho = 1000$ kg/m³

Ambient Temperature : 23.6 °C; Liquid Temperature : 22.6 °C

DASY5 Configuration

- Probe: EX3DV4 - SN3925; ConvF(3.85, 3.85, 3.85); Calibrated: 2016/5/26;
- Sensor-Surface: 1.4mm (Mechanical Surface Detection)
- Electronics: DAE3 Sn495; Calibrated: 2016/5/27
- Phantom: SAM LEFT; Type: QD000P40CD; Serial: TP:1718
- Measurement SW: DASY52, Version 52.8 (7); SEMCAD X Version 14.6.10 (7164)

Area Scan (121x101x1): Interpolated grid: dx=1.000 mm, dy=1.000 mm

Maximum value of SAR (interpolated) = 1.06 W/kg

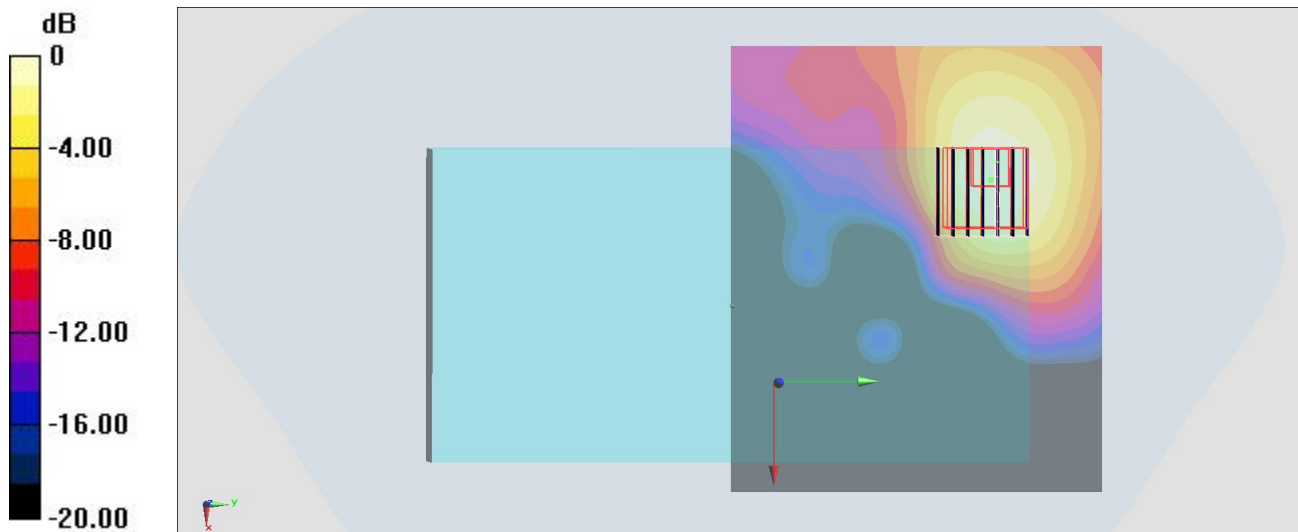
Zoom Scan (7x7x7)/Cube 0: Measurement grid: dx=4mm, dy=4mm, dz=1.4mm

Reference Value = 10.238 V/m; Power Drift = -0.01 dB

Peak SAR (extrapolated) = 1.60 W/kg

SAR(1 g) = 0.448 W/kg; SAR(10 g) = 0.171 W/kg

Maximum value of SAR (measured) = 1.02 W/kg



0 dB = 1.02 W/kg = 0.09 dBW/kg