

#01\_WLAN6GHz\_802.11ac-VHT160 MCS0\_Left Cheek\_0mm\_Ch175;Ant 1+2

Communication System: U-NII-7; Frequency: 6825.0

Medium: HSL\_6G\_220205 . Medium parameters used:  $f= 6825.0$  MHz;  $\sigma= 6.27$  S/m;  $\epsilon_r = 34.5$

Ambient Temperature: 23.7°C; Liquid Temperature: 22.7°C

DASY6 Configuration:

- Probe: EX3DV4 - SN7439; ConvF(5.7, 5.7, 5.7); Calibrated: 2021-02-23
- Sensor-Surface: 1.4 mm
- Electronics: DAE4 Sn778; Calibrated: 2021-05-21
- Phantom: Twin-SAM V5.0 (30deg probe tilt); Serial: 1719; Section: LeftHead
- Measurement Software: cDASY6 V6.6.0.13926
- UID: WLAN, 10755-AAC
- MAIA: Area Scan: N/A; Zoom Scan: N/A

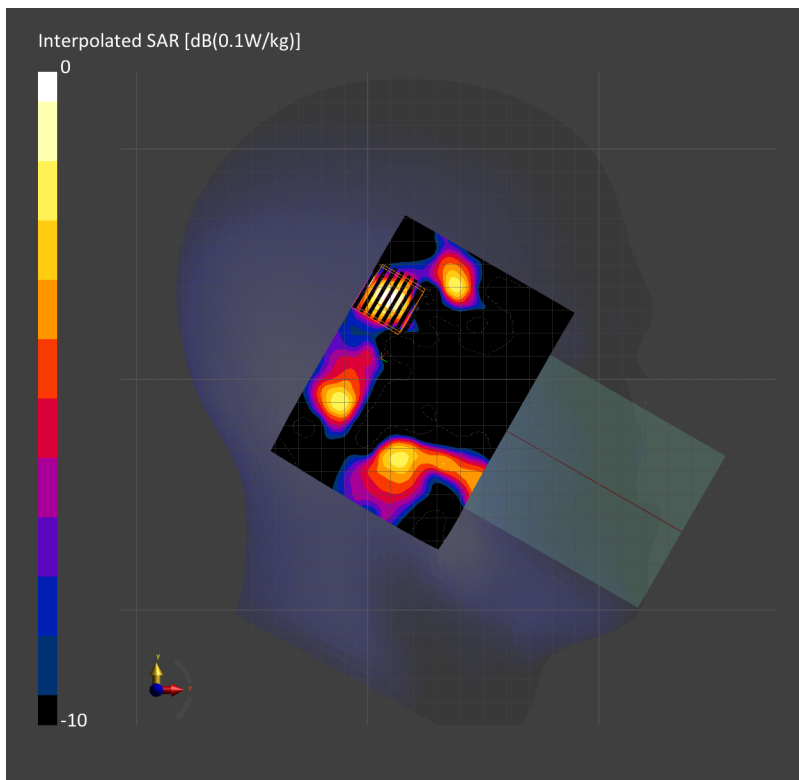
**Area Scan (119.0 mm x 85.0 mm):** Measurement Grid: 8.5 mm x 8.5 mm

SAR (1g) = 0.067 W/kg; SAR (10g) = 0.019 W/kg;

**Zoom Scan (23.8 mm x 23.8 mm x 22.0 mm):** Measurement Grid: 3.4 mm x 3.4 mm x 1.4 mm

Power Drift = -0.11 dB

SAR (1g) = 0.075 W/kg; SAR (10g) = 0.019 W/kg;



## #02\_WLAN6GHz\_802.11ac-VHT160 MCS0\_Back\_15mm\_Ch175;Ant 1+2

Communication System: U-NII-7; Frequency: 6825.0

Medium: HSL\_6G\_220205 Medium parameters used:  $f = 6825.0$  MHz;  $\sigma = 6.27$  S/m;  $\epsilon_r = 34.5$

Ambient Temperature: 23.7°C; Liquid Temperature: 22.7°C

DASY6 Configuration:

- Probe: EX3DV4 - SN7439; ConvF(5.7, 5.7, 5.7); Calibrated: 2021-02-23
- Sensor-Surface: 1.4 mm
- Electronics: DAE4 Sn778; Calibrated: 2021-05-21
- Phantom: Twin-SAM V5.0 (30deg probe tilt); Serial: 1719; Section: Flat
- Measurement Software: cDASY6 V6.6.0.13926
- UID: WLAN, 10755-AAC
- MAIA: Area Scan: N/A; Zoom Scan: N/A

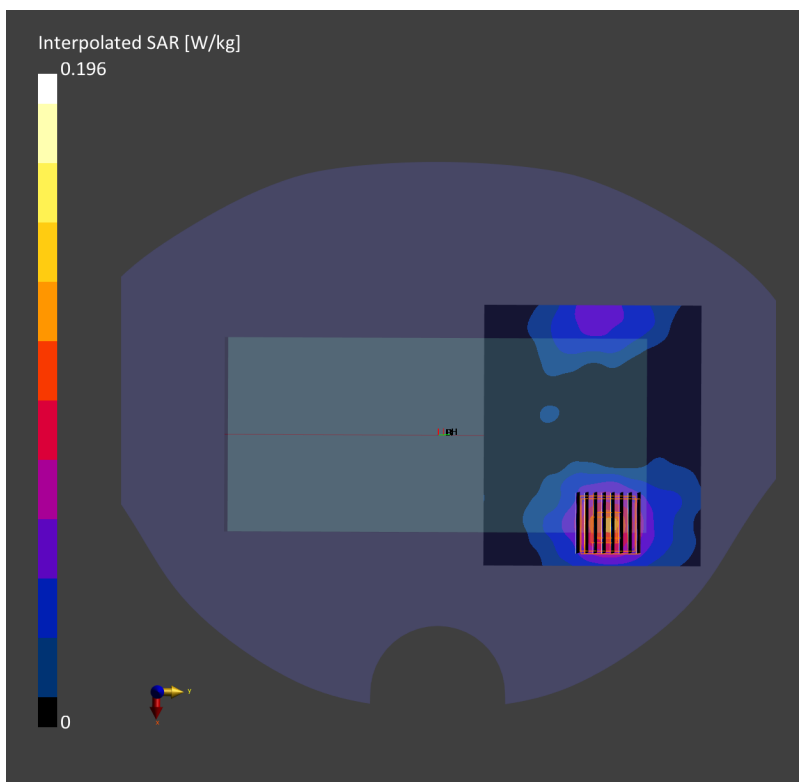
**Area Scan (102.0 mm x 85.0 mm):** Measurement Grid: 8.5 mm x 8.5 mm

SAR (1g) = 0.098 W/kg; SAR (10g) = 0.037 W/kg;

**Zoom Scan (23.8 mm x 23.8 mm x 22.0 mm):** Measurement Grid: 3.4 mm x 3.4 mm x 1.4 mm

Power Drift = 0.12 dB

SAR (1g) = 0.097 W/kg; SAR (10g) = 0.037 W/kg;



**#03\_WLAN6GHz\_802.11ac-VHT160 MCS0\_Right Side\_0mm\_Ch175;Ant 1+2**

Communication System: U-NII-7; Frequency: 6825.0

Medium: HSL\_6G\_220205 Medium parameters used:  $f = 6825.0$  MHz;  $\sigma = 6.27$  S/m;  $\epsilon_r = 34.5$

Ambient Temperature: 23.7°C; Liquid Temperature: 22.7°C

**DASY6 Configuration:**

- Probe: EX3DV4 - SN7439; ConvF(5.7, 5.7, 5.7); Calibrated: 2021-02-23
- Sensor-Surface: 1.4 mm
- Electronics: DAE4 Sn778; Calibrated: 2021-05-21
- Phantom: Twin-SAM V5.0 (30deg probe tilt); Serial: 1719; Section: Flat
- Measurement Software: cDASY6 V6.6.0.13926
- UID: WLAN, 10755-AAC
- MAIA: Area Scan: N/A; Zoom Scan: N/A

**Area Scan (68.0 mm x 85.0 mm):** Measurement Grid: 8.5 mm x 8.5 mm

SAR (1g) = 1.46 W/kg; SAR (10g) = 0.311 W/kg;

**Zoom Scan (23.8 mm x 23.8 mm x 22.0 mm):** Measurement Grid: 3.4 mm x 3.4 mm x 1.4 mm

Power Drift = -0.06 dB

SAR (1g) = 1.88 W/kg; SAR (10g) = 0.309 W/kg;

