

Appendix D. SAR Test Setup Photos



Right Cheek



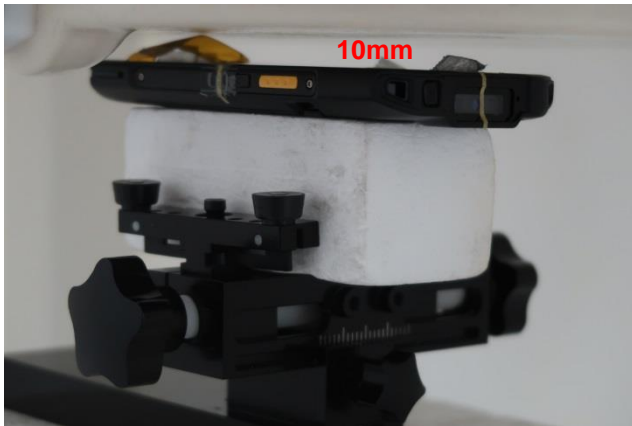
Right Tilted



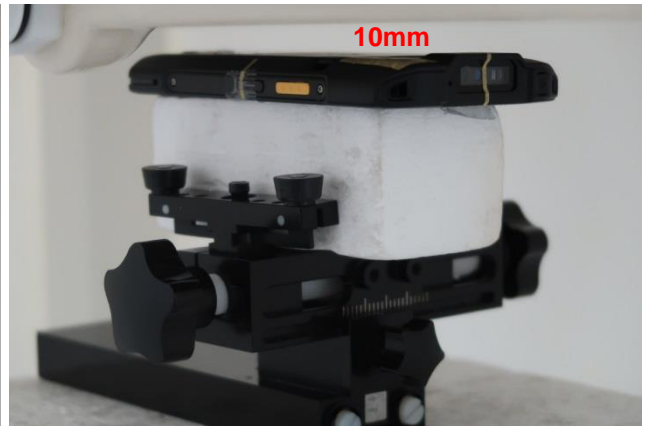
Left Cheek



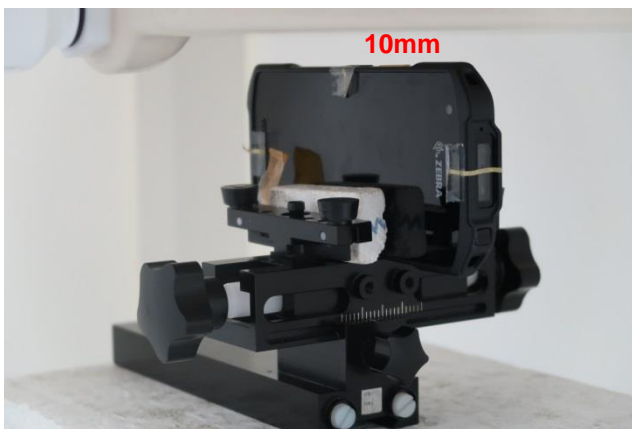
Left Tilted



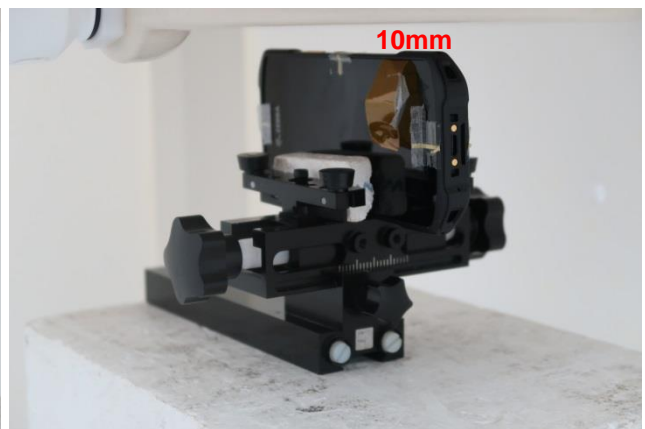
Front, Test Separation 10 mm



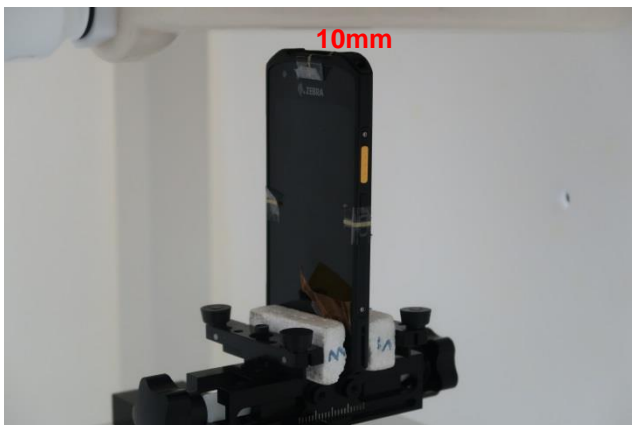
Back, Test Separation 10 mm



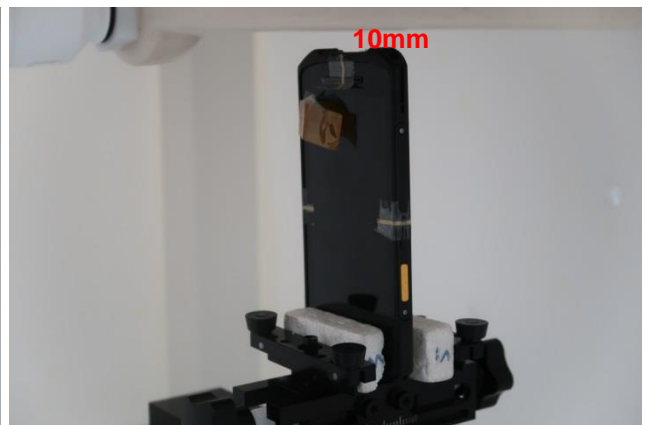
Left Side, Test Separation 10 mm



Right Side, Test Separation 10 mm



Top Side, Test Separation 10 mm



Bottom Side, Test Separation 10 mm



Front, Test Separation 0 mm



Back, Test Separation 0 mm



Front with Soft Holster, Test Separation 0 mm



Back with Soft Holster, Test Separation 0 mm



Back with Wearable Wrist, Test Separation 0 mm



Top Side, Test Separation 0 mm



Right Side, Test Separation 0 mm