

System Check_Head_1750MHz

Communication System: ; Frequency: 1750.0

Medium: HSL_1750_220317. Medium parameters used: $f= 1750.0$ MHz; $\sigma= 1.37$ S/m; $\epsilon_r = 40.3$

Ambient Temperature: 23.5°C; Liquid Temperature: 22.5°C

DASY6 Configuration:

- Probe: EX3DV4 - SN3931; ConvF(8.60, 8.60, 8.60); Calibrated: 2021-10-21
- Sensor-Surface: 1.4 mm
- Electronics: DAE4 Sn376; Calibrated: 2021-11-22
- Phantom: Twin-SAM V4.0 (30deg probe tilt); Serial: 1488; Section: Flat
- Measurement Software: cDASY6 V6.6.0.13926
- UID: CW, 0--
- MAIA: Area Scan: N/A; Zoom Scan: N/A

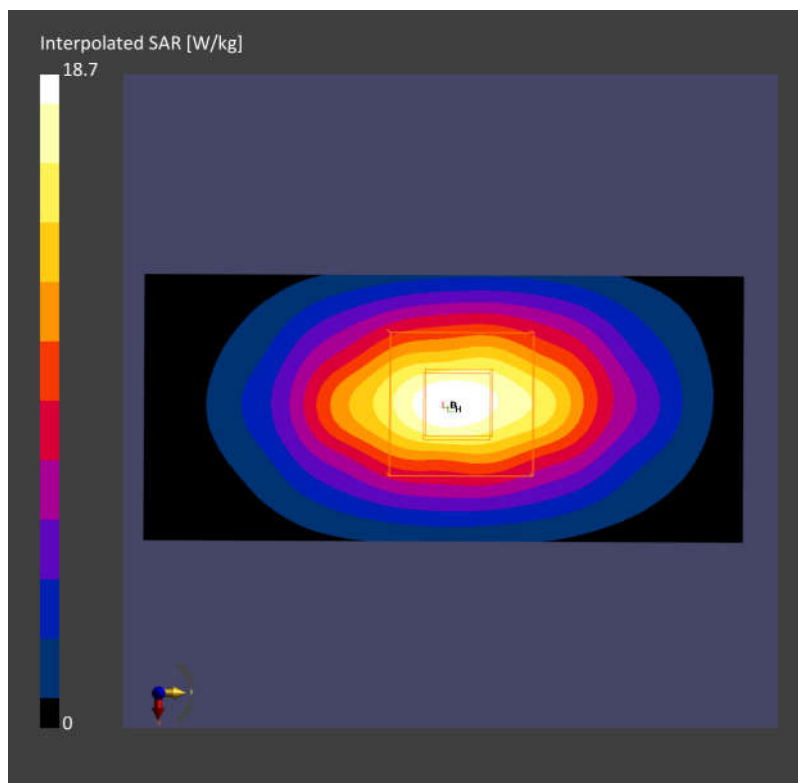
Area Scan (40.0 mm x 90.0 mm): Measurement Grid: 10.0 mm x 15.0 mm

SAR (1g) = 9.85 W/kg; SAR (10g) = 5.19 W/kg;

Zoom Scan (32.0 mm x 32.0 mm x 30.0 mm): Measurement Grid: 6.0 mm x 6.0 mm x 1.5 mm

Power Drift = -0.13 dB

SAR (1g) = 9.89 W/kg; SAR (10g) = 5.18 W/kg;



System Check_Head_1900MHz

Communication System: ; Frequency: 1900.0

Medium: HSL_1900_220317. Medium parameters used: $f= 1900.0$ MHz; $\sigma= 1.42$ S/m; $\epsilon_r = 41.0$

Ambient Temperature: 23.5°C; Liquid Temperature: 22.5°C

DASY6 Configuration:

- Probe: EX3DV4 - SN3931; ConvF(8.25, 8.25, 8.25); Calibrated: 2021-10-21
- Sensor-Surface: 1.4 mm
- Electronics: DAE4 Sn376; Calibrated: 2021-11-22
- Phantom: Twin-SAM V4.0 (30deg probe tilt); Serial: 1488; Section: Flat
- Measurement Software: cDASY6 V6.6.0.13926
- UID: CW, 0--
- MAIA: Area Scan: N/A; Zoom Scan: N/A

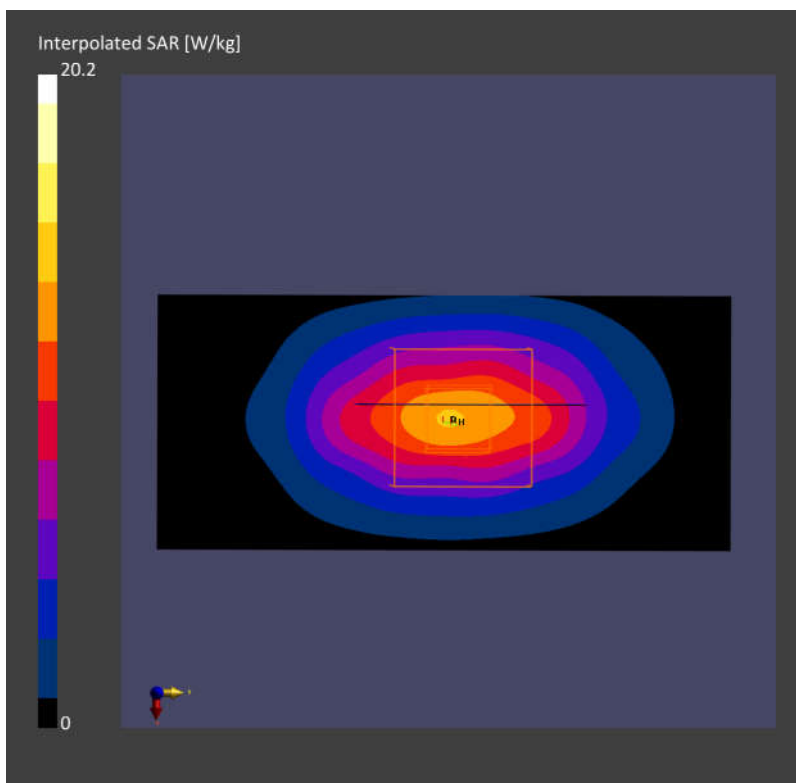
Area Scan (40.0 mm x 90.0 mm): Measurement Grid: 10.0 mm x 15.0 mm

SAR (1g) = 10.91 W/kg; SAR (10g) = 5.71 W/kg;

Zoom Scan (32.0 mm x 32.0 mm x 30.0 mm): Measurement Grid: 6.0 mm x 6.0 mm x 1.5 mm

Power Drift = -0.04 dB

SAR (1g) = 10.9 W/kg; SAR (10g) = 5.63 W/kg;



System Check_Head_2600MHz

Communication System: ; Frequency: 2600.0

Medium: HSL_2600_220317. Medium parameters used: $f= 2600.0$ MHz; $\sigma= 1.97$ S/m; $\epsilon_r = 38.8$

Ambient Temperature: 23.5°C; Liquid Temperature: 22.5°C

DASY6 Configuration:

- Probe: EX3DV4 - SN3931; ConvF(7.30, 7.30, 7.30); Calibrated: 2021-10-21
- Sensor-Surface: 1.4 mm
- Electronics: DAE4 Sn376; Calibrated: 2021-11-22
- Phantom: Twin-SAM V4.0 (30deg probe tilt); Serial: 1488; Section: Flat
- Measurement Software: cDASY6 V6.6.0.13926
- UID: CW, 0--
- MAIA: Area Scan: N/A; Zoom Scan: N/A

Area Scan (40.0 mm x 96.0 mm): Measurement Grid: 10.0 mm x 12.0 mm

SAR (1g) = 14.5 W/kg; SAR (10g) = 6.38 W/kg;

Zoom Scan (30.0 mm x 30.0 mm x 30.0 mm): Measurement Grid: 5.0 mm x 5.0 mm x 1.5 mm

Power Drift = -0.07 dB

SAR (1g) = 14.6 W/kg; SAR (10g) = 6.59 W/kg;

