

System Check_Head_2450MHz

DUT: D2450V2-736

Communication System: CW; Frequency: 2450 MHz; Duty Cycle: 1:1

Medium: HSL_2450_221103 Medium parameters used : $f = 2450$ MHz; $\sigma = 1.782$ S/m; $\epsilon_r = 39.438$;

$\rho = 1000$ kg/m³

Ambient Temperature : 23.5 °C ; Liquid Temperature : 22.5 °C

DASY5 Configuration:

- Probe: EX3DV4 - SN7306; ConvF(7.54, 7.54, 7.54) @ 2450 MHz; Calibrated: 2022/7/28

- Sensor-Surface: 1.4mm (Mechanical Surface Detection)

- Electronics: DAE4 Sn1512; Calibrated: 2022/3/29

- Phantom: Twin-SAM V5.0 (30deg probe tilt)_Right; Type: QD 000 P40 CD; Serial: TP-1479

- Measurement SW: DASY52, Version 52.10 (4); SEMCAD X Version 14.6.14 (7501)

Pin=250mW/Area Scan (81x81x1): Interpolated grid: dx=1.200 mm, dy=1.200 mm

Maximum value of SAR (interpolated) = 20.9 W/kg

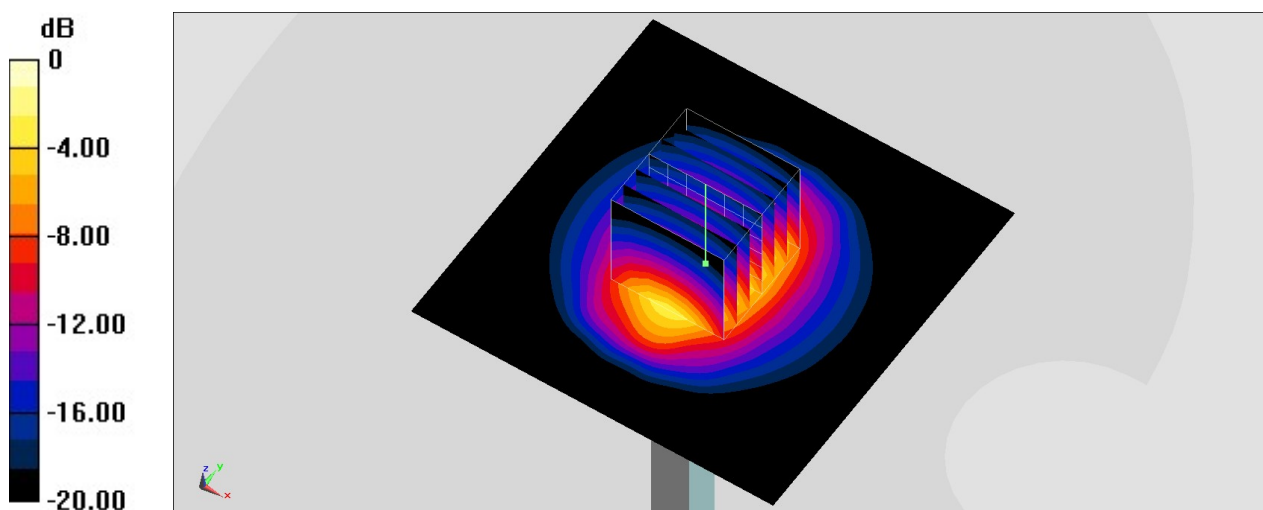
Pin=250mW/Zoom Scan (7x7x7)/Cube 0: Measurement grid: dx=5mm, dy=5mm, dz=5mm

Reference Value = 114.8 V/m; Power Drift = -0.12 dB

Peak SAR (extrapolated) = 25.5 W/kg

SAR(1 g) = 12.5 W/kg; SAR(10 g) = 5.8 W/kg

Maximum value of SAR (measured) = 20.6 W/kg



0 dB = 20.6 W/kg = 13.14 dBW/kg