

#01_Bluetooth_1Mbps_Front_0mm_Ch39

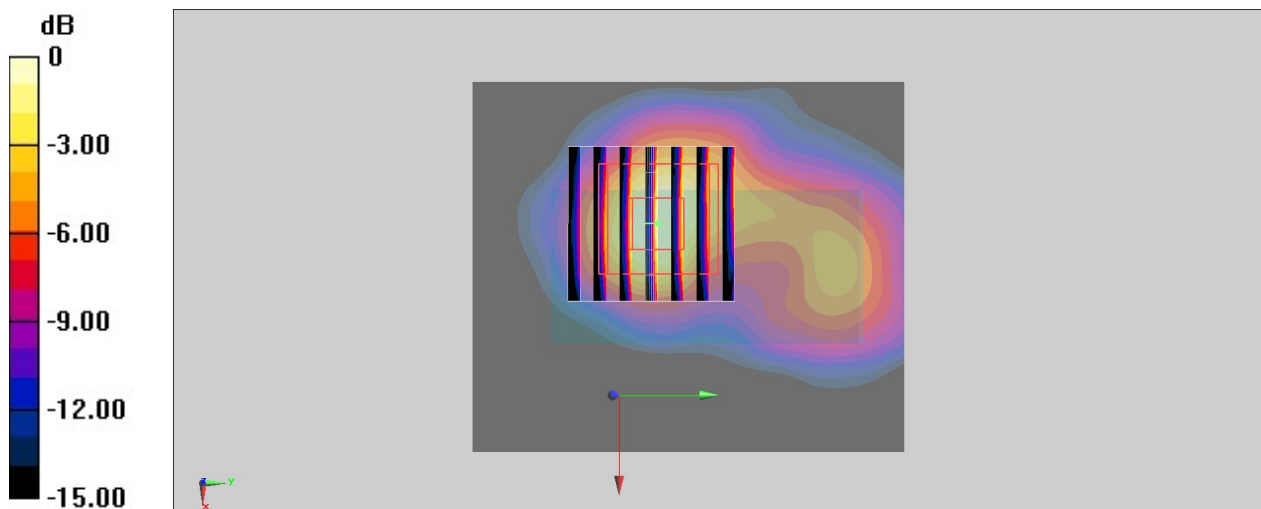
Communication System: Bluetooth; Frequency: 2441 MHz; Duty Cycle: 1:1.302
Medium: HSL2450_221103 Medium parameters used : $f = 2441$ MHz; $\sigma = 1.777$ S/m; $\epsilon_r = 39.51$; $\rho = 1000$ kg/m³
Ambient Temperature : 23.5 °C ; Liquid Temperature : 22.5 °C

DASY5 Configuration:

- Probe: EX3DV4 - SN7306; ConvF(7.54, 7.54, 7.54) @ 2441 MHz; Calibrated: 2022/7/28
- Sensor-Surface: 1.4mm (Mechanical Surface Detection)
- Electronics: DAE4 Sn1512; Calibrated: 2022/3/29
- Phantom: Twin-SAM V5.0 (30deg probe tilt)_Right; Type: QD 000 P40 CD; Serial: TP-1479
- Measurement SW: DASY52, Version 52.10 (4); SEMCAD X Version 14.6.14 (7501)

Area Scan (61x71x1): Interpolated grid: dx=1.200 mm, dy=1.200 mm
Maximum value of SAR (interpolated) = 0.103 W/kg

Zoom Scan (7x7x7)/Cube 0: Measurement grid: dx=5mm, dy=5mm, dz=5mm
Reference Value = 5.675 V/m; Power Drift = -0.16 dB
Peak SAR (extrapolated) = 0.126 W/kg
SAR(1 g) = 0.056 W/kg; SAR(10 g) = 0.025 W/kg
Maximum value of SAR (measured) = 0.0976 W/kg



0 dB = 0.0976 W/kg = -10.11 dBW/kg