

#01_RFID_ASK_Front_21mm_914.75MHz

Communication System: CW ; Frequency: 914.75 MHz; Duty Cycle: 1:1.141

Medium: HSL_900_210407 Medium parameters used: $f = 915$ MHz; $\sigma = 0.965$ S/m; $\epsilon_r = 42$; $\rho = 1000$ kg/m³

Ambient Temperature : 23.4 °C ; Liquid Temperature : 22.4 °C

DASY5 Configuration:

- Probe: EX3DV4 - SN7625; ConvF(9.68, 9.68, 9.68) @ 914.75 MHz; Calibrated: 2021/1/19
- Sensor-Surface: 1.4mm (Mechanical Surface Detection)
- Electronics: DAE4 Sn1311; Calibrated: 2020/8/25
- Phantom: SAM_Right; Type: SAM; Serial: TP:1446
- Measurement SW: DASY52, Version 52.10 (4); SEMCAD X Version 14.6.14 (7483)

Area Scan (101x81x1): Interpolated grid: dx=1.500 mm, dy=1.500 mm

Maximum value of SAR (interpolated) = 1.19 W/kg

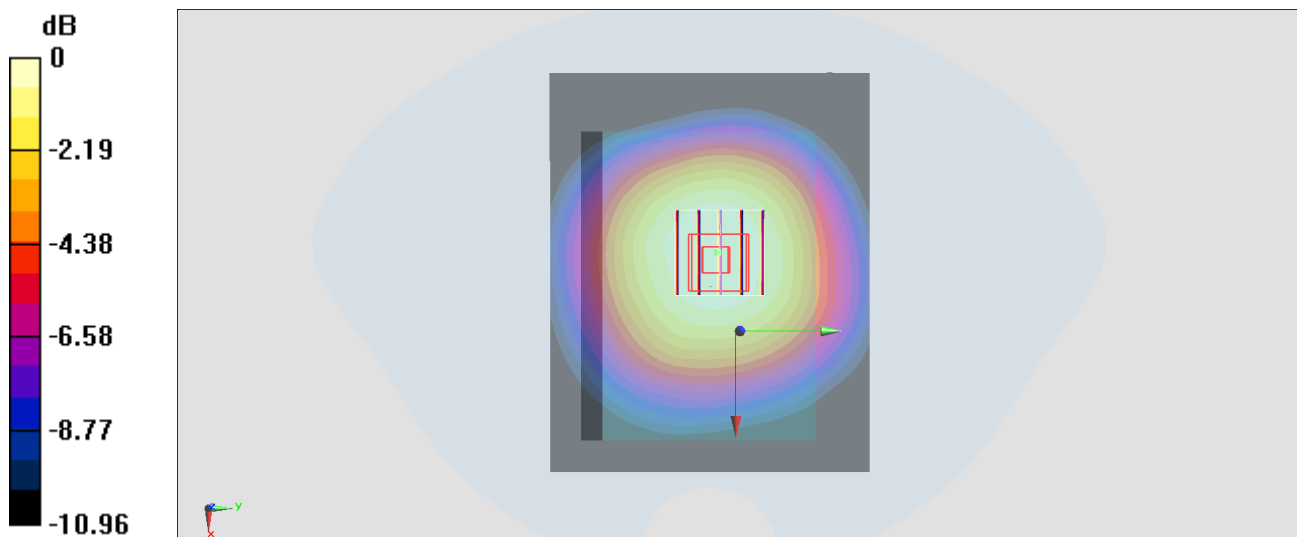
Zoom Scan (5x5x7)/Cube 0: Measurement grid: dx=8mm, dy=8mm, dz=5mm

Reference Value = 34.75 V/m; Power Drift = -0.12 dB

Peak SAR (extrapolated) = 1.31 W/kg

SAR(1 g) = 0.934 W/kg; SAR(10 g) = 0.688 W/kg

Maximum value of SAR (measured) = 1.17 W/kg



0 dB = 1.19 W/kg = 0.76 dBW/kg