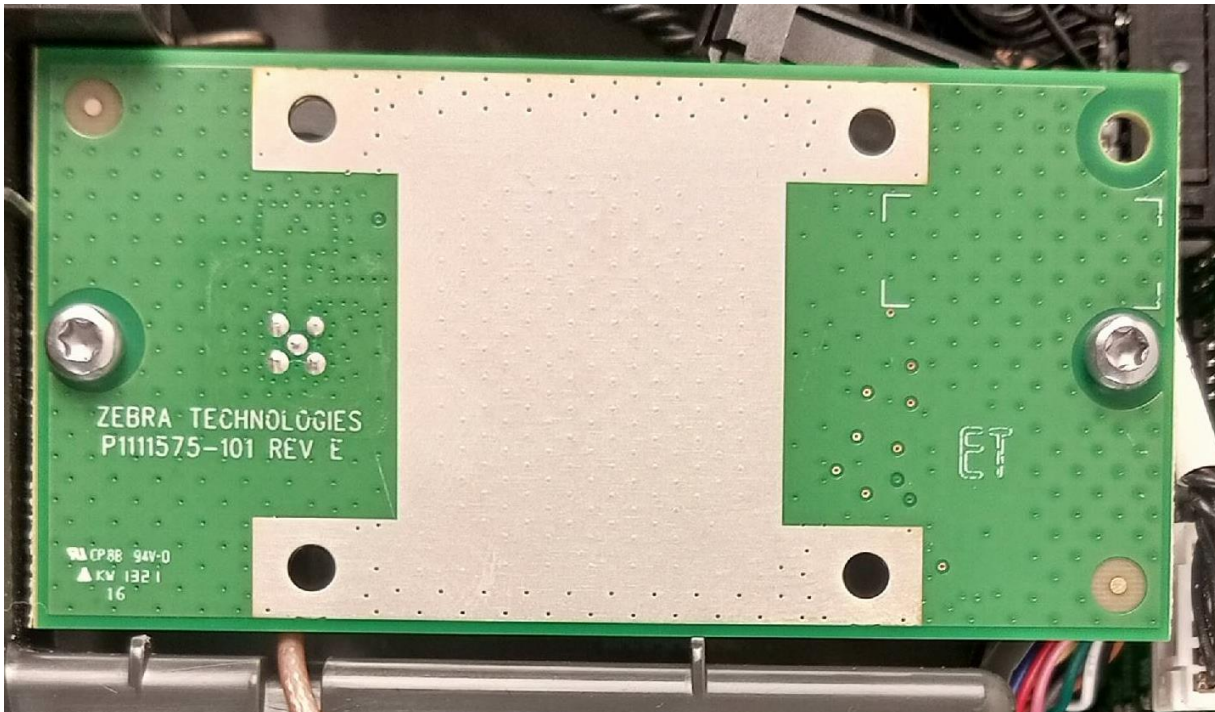


Host Device Internal Photographs

1.1 EUT Board Top View



1.2 EUT Board Bottom View



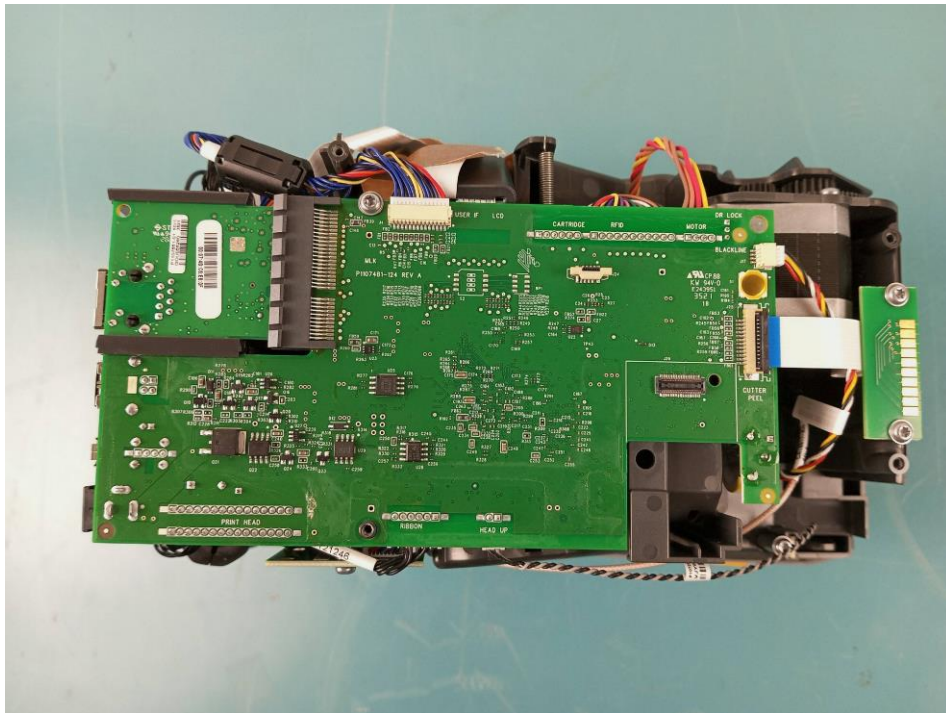
1.3 EUT Internal View #1



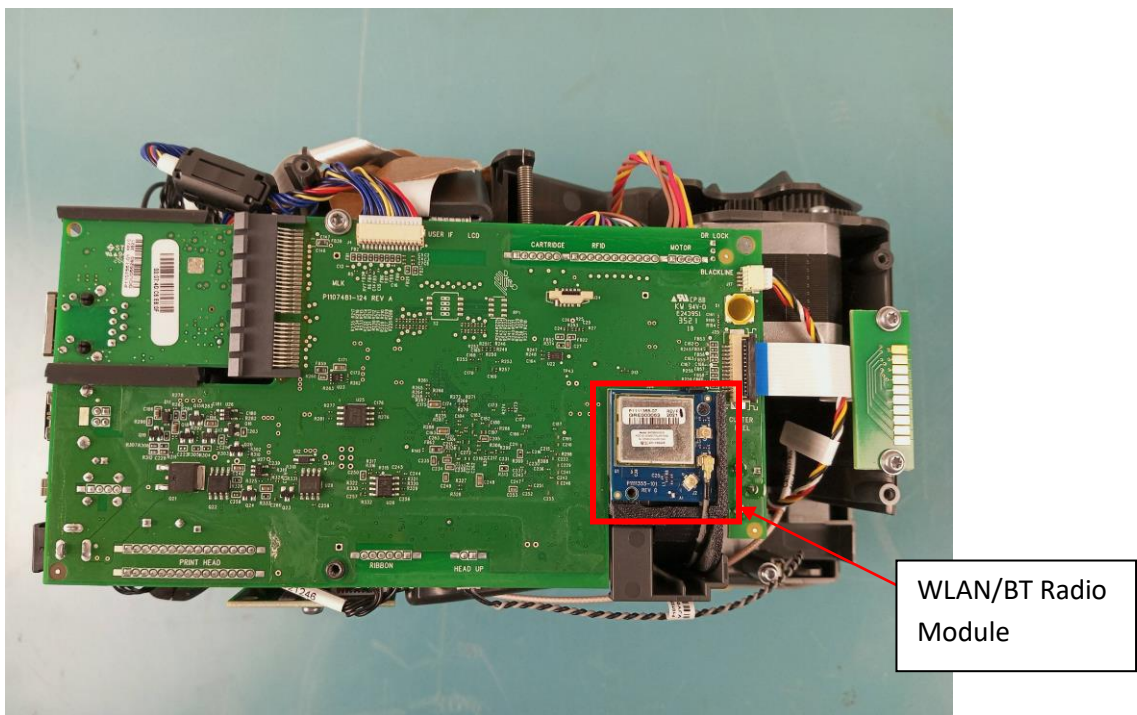
1.4 EUT Internal View #2



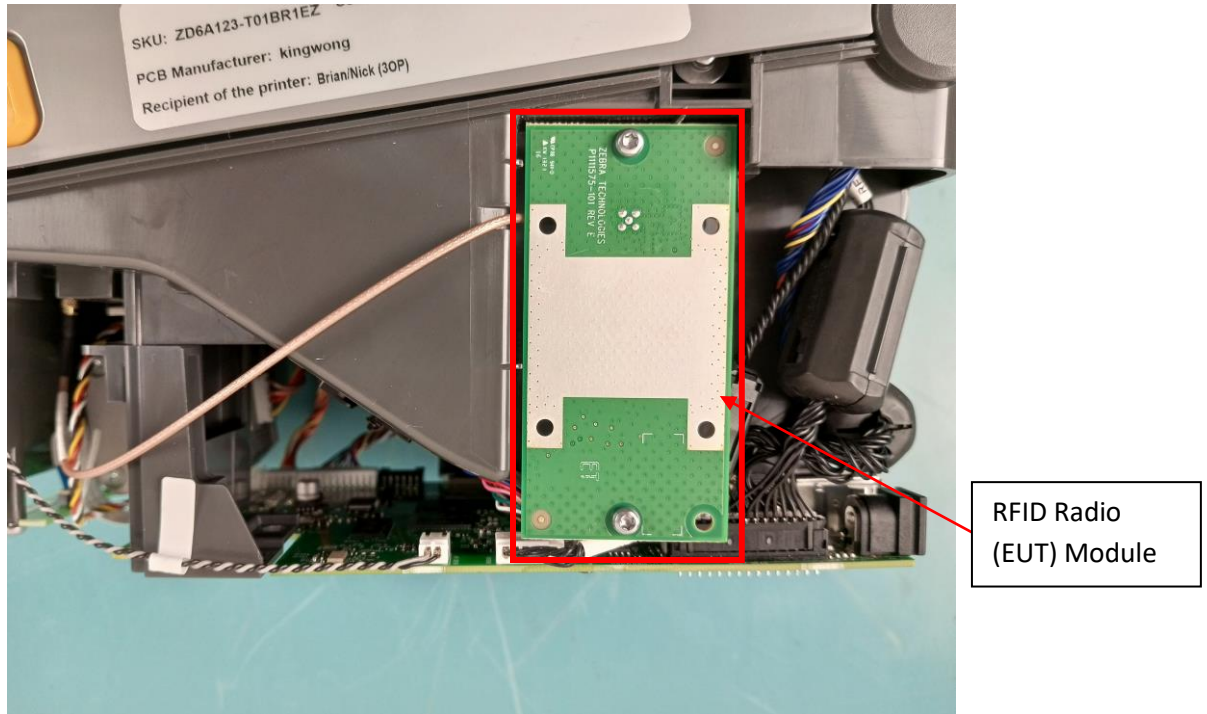
1.5 Host Device Internal Top View (Without WLAN/BT chip)



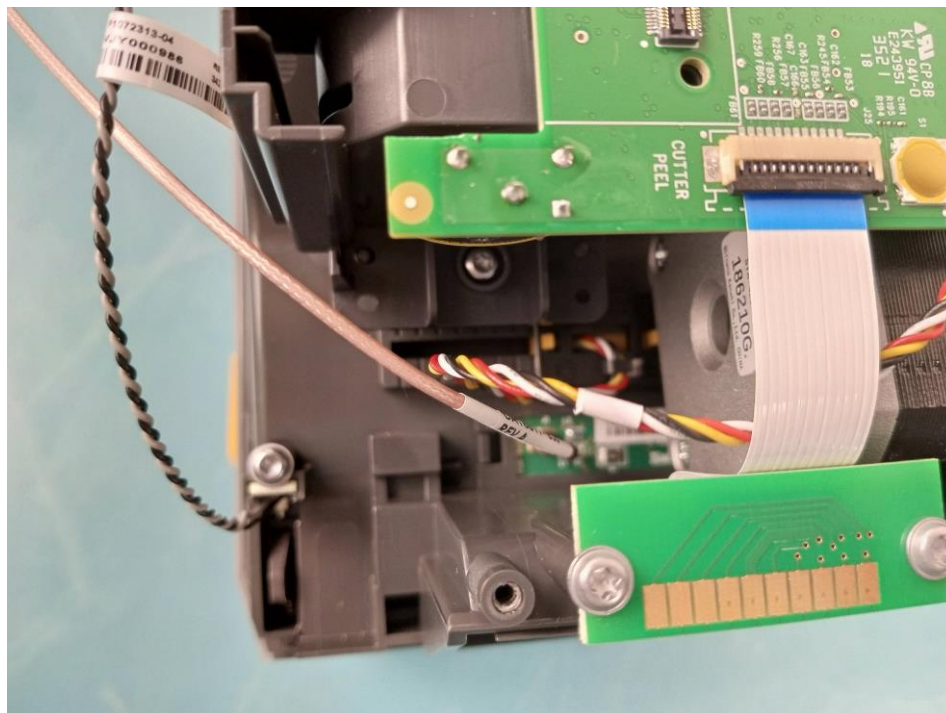
1.6 Host Device Internal Top View (With WLAN/BT chip)



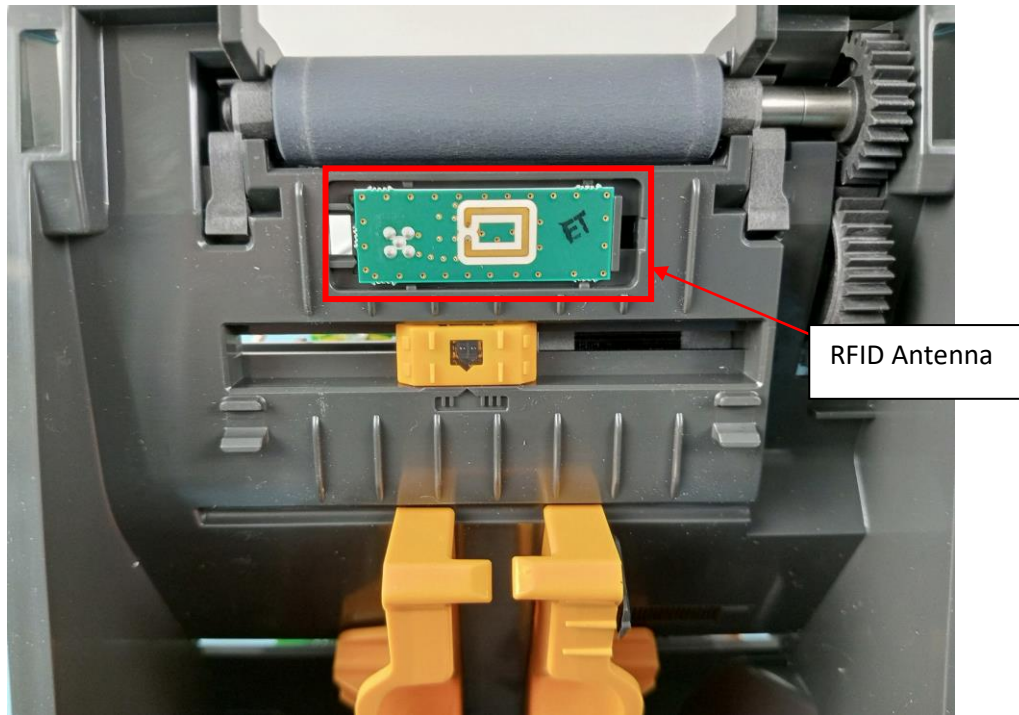
1.9 Host Device Internal Side View



1.10 Host Device Internal RFID Connection to Antenna View



1.11 Host Device Internal RFID Antenna View (RFID Antenna Bottom View)



1.12 RFID Antenna Top View



1.13 WLAN/BT Antenna

