

01_WLAN6GHz_802.11ax-HE160 MCS0_Front_0mm_Soft Holster_Ch207

Communication System: U-NII-8; Frequency: 6985.000

Medium: HSL. Medium parameters used: $f=6985.000$ MHz; $\sigma=6.63$ S/m; $\epsilon_r=33.7$

Ambient Temperature: 23.3°C; Liquid Temperature: 22.8°C

DASY6 Configuration:

- Probe: EX3DV4 - SN7764; ConvF(5.5, 5.5, 5.5); Calibrated: 2023-10-05
- Sensor-Surface: 1.4 mm
- Electronics: DAE4 Sn1279; Calibrated: 2023-06-07
- Phantom: Twin-SAM V8.0 (30deg probe tilt); Serial: 2022
- Measurement Software: cDASY6 V6.6.0.13926

Area Scan (102.0 mm x 170.0 mm): Measurement Grid: 8.5 mm x 8.5 mm

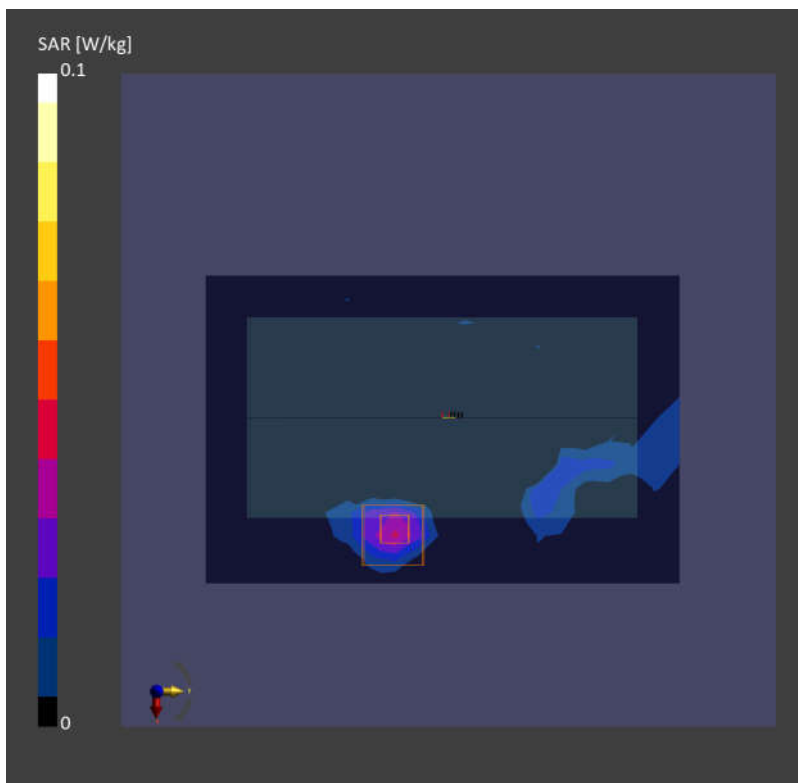
SAR (1g) = 0.040 W/kg; SAR (10g) = 0.012 W/kg;

Zoom Scan (23.8 mm x 23.8 mm x 22.0 mm): Measurement Grid: 3.4 mm x 3.4 mm x 1.4 mm

Power Drift = 0.01 dB

SAR (1g) = 0.037 W/kg; SAR (10g) = 0.011 W/kg;

psAPD (4.0cm², sq) = 0.257 [W/m²];



02_WLAN6GHz_802.11ax-HE160 MCS0_Back_0mm_Ch47

Communication System: U-NII-5; Frequency: 6185.000

Medium: HSL. Medium parameters used: $f = 6185.000$ MHz; $\sigma = 5.68$ S/m; $\epsilon_r = 35.0$

Ambient Temperature: 23.3°C; Liquid Temperature: 22.8°C

DASY6 Configuration:

- Probe: EX3DV4 - SN7764; ConvF(5.5, 5.5, 5.5); Calibrated: 2023-10-05
- Sensor-Surface: 1.4 mm
- Electronics: DAE4 Sn1279; Calibrated: 2023-06-07
- Phantom: Twin-SAM V8.0 (30deg probe tilt); Serial: 2022
- Measurement Software: cDASY6 V6.6.0.13926

Area Scan (102.0 mm x 170.0 mm): Measurement Grid: 8.5 mm x 8.5 mm

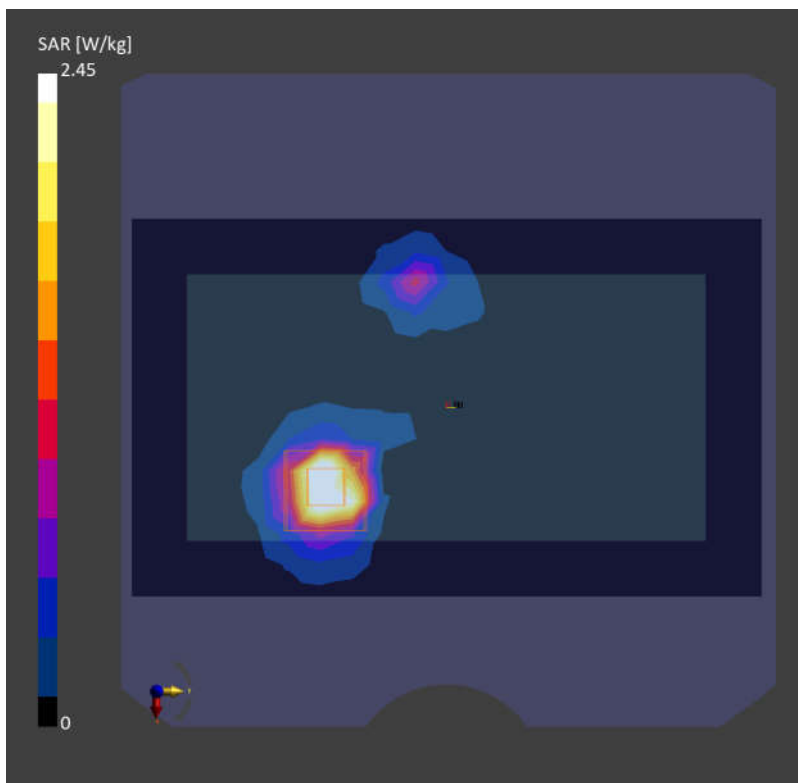
SAR (1g) = 2.33 W/kg; SAR (10g) = 0.699 W/kg;

Zoom Scan (23.8 mm x 23.8 mm x 22.0 mm): Measurement Grid: 3.4 mm x 3.4 mm x 1.4 mm

Power Drift = -0.08 dB

SAR (1g) = 2.45 W/kg; SAR (10g) = 0.691 W/kg;

psAPD (4.0cm², sq) = 16.1 [W/m²];



01_WLAN6GHz_802.11ax-HE160 MCS0_Back_2mm_Ch47

Device Under Test Properties

Model, Manufacturer	Dimensions [mm]
Device,	145.0 x 71.0 x 20.0

Exposure Conditions

Phantom Section	Position, Test Distance [mm]	Band	Group, UID	Frequency [MHz], Channel Number	Conversion Factor
5G	BACK, 2.00	U-NII-5	WLAN, 10743-AAC	6185.0, 47	1.0

Hardware Setup

Phantom	Medium	Probe, Calibration Date	DAE, Calibration Date
mmWave - 1065	Air -	EUmmWV4 - SN9553_F1-55GHz, 2023-10-18	DAE4 Sn690, 2023-06-20

Scans Setup

Scan Type	5G Scan
Grid Extents [mm]	120.0 x 120.0
Grid Steps [lambda]	0.0625 x 0.0625
Sensor Surface [mm]	2.0
MAIA	N/A

Measurement Results

Scan Type	5G Scan
Date	2024-01-08
Avg. Area [cm ²]	4.00
psPDn+ [W/m ²]	4.02
psPDtot+ [W/m ²]	4.47
psPDmod+ [W/m ²]	7.86
E _{max} [V/m]	81.5
Power Drift [dB]	-0.06

