

## System Check\_Head\_6500MHz

### DUT:D6.5GHzV2 - SN:1031

Communication System: ; Frequency: 6500.000

Medium: HSL. Medium parameters used:  $f= 6500.000$  MHz;  $\sigma= 6.06$  S/m;  $\epsilon_r = 34.5$

Ambient Temperature: 23.3°C; Liquid Temperature: 22.8°C

#### DASY6 Configuration:

- Probe: EX3DV4 - SN7764; ConvF(5.5, 5.5, 5.5); Calibrated: 2023-10-05
- Sensor-Surface: 1.4 mm
- Electronics: DAE4 Sn1279; Calibrated: 2023-06-07
- Phantom: Twin-SAM V8.0 (30deg probe tilt); Serial: 2022
- Measurement Software: cDASY6 V6.6.0.13926

**Area Scan (51.0 mm x 85.0 mm):** Measurement Grid: 8.5 mm x 8.5 mm

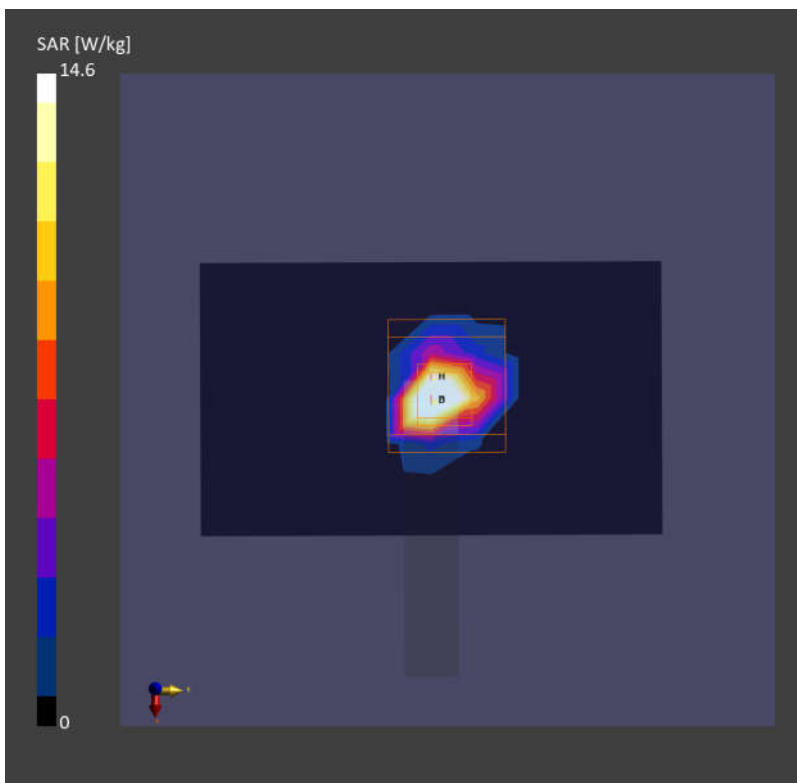
SAR (1g) = 12.8 W/kg; SAR (10g) = 2.58 W/kg;

**Zoom Scan (22.0 mm x 22.0 mm x 22.0 mm):** Measurement Grid: 3.4 mm x 3.4 mm x 1.4 mm

Power Drift = -0.01 dB

SAR (1g) = 14.6 W/kg; SAR (10g) = 2.67 W/kg;

psAPD (4.0cm<sup>2</sup>, sq) = 61.6 [W/m<sup>2</sup>];



Measurement Report for Device, FRONT, Validation band, CW, Channel 10000 (10000.0 MHz)

Device Under Test Properties

Model, Manufacturer	Dimensions [mm]
Device,	100.0 x 100.0 x 105.0

Exposure Conditions

Phantom Section	Position, Test Distance [mm]	Band	Group, UID	Frequency [MHz], Channel Number	Conversion Factor
5G	FRONT, 10.00	Validation band	CW, 0--	10000.0, 10000	1.0

Hardware Setup

Phantom	Medium	Probe, Calibration Date	DAE, Calibration Date
mmWave - 1065	Air -	EUmmWV4 - SN9553_F1-55GHz, 2023-10-18	DAE4 Sn690, 2023-06-20

Scans Setup

Scan Type	5G Scan
Grid Extents [mm]	60.0 x 60.0
Grid Steps [lambda]	0.125 x 0.125
Sensor Surface [mm]	10.0
MAIA	N/A

Measurement Results

Scan Type	5G Scan
Date	2024-01-08
Avg. Area [cm <sup>2</sup> ]	4.00
psPDn+ [W/m <sup>2</sup> ]	57.3
psPDtot+ [W/m <sup>2</sup> ]	57.9
psPDmod+ [W/m <sup>2</sup> ]	58.6
E <sub>max</sub> [V/m]	179
Power Drift [dB]	-0.05

