

System Check_Head_1750MHz

DUT: D1750V2 - SN1112

Communication System: CW; Frequency: 1750.000 MHz; Duty Cycle: 1:1

Medium: HSL_1750_20240129 Medium parameters used: $f = 1750.000$ MHz; $\sigma = 1.38$ S/m; $\epsilon_r = 40.7$

Ambient Temperature: 23.5°C; Liquid Temperature: 22.5°C

DASY6 Configuration:

- Probe: EX3DV4 - SN3642; ConvF(8.16, 8.16, 8.16); Calibrated: 2023-04-26
- Sensor-Surface: 1.4 mm
- Electronics: DAE4 Sn854; Calibrated: 2023-08-17
- Phantom: ELI V5.0 (20deg probe tilt); Serial: 1238-; Section: Flat
- Measurement Software: 16.2.4.2524
- UID: CW, 0--

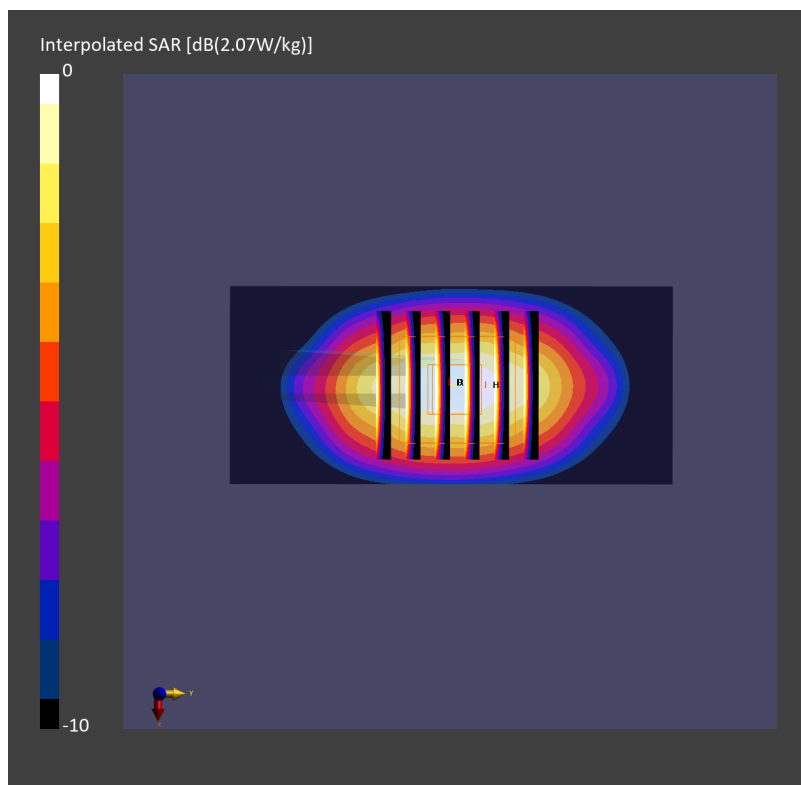
Pin=17.0dBm/Area Scan (40.0 mm x 90.0 mm): Measurement Grid: 10.0 mm x 15.0 mm

SAR (1g) = 1.88 W/kg; SAR (10g) = 0.996 W/kg;

Pin=17.0dBm/Zoom Scan (30.0 mm x 30.0 mm x 30.0 mm): Measurement Grid: 6.0 mm x 6.0 mm x 1.5 mm

Power Drift = 0.03 dB

SAR (1g) = 1.93 W/kg; SAR (8g) = 1.13 W/kg; SAR (10g) = 1.03 W/kg



System Check_Head_1900MHz

DUT: D1900V2 - SN5d093

Communication System: CW; Frequency: 1900.000 MHz; Duty Cycle: 1:1

Medium: HSL_1900_20240129 Medium parameters used: $f = 1900.000$ MHz; $\sigma = 1.43$ S/m; $\epsilon_r = 39.0$

Ambient Temperature: 23.5°C; Liquid Temperature: 22.5°C

DASY6 Configuration:

- Probe: EX3DV4 - SN3642; ConvF(7.88, 7.88, 7.88); Calibrated: 2023-04-26
- Sensor-Surface: 1.4 mm
- Electronics: DAE4 Sn854; Calibrated: 2023-08-17
- Phantom: ELI V5.0 (20deg probe tilt); Serial: 1238-; Section: Flat
- Measurement Software: 16.2.4.2524
- UID: CW, 0--

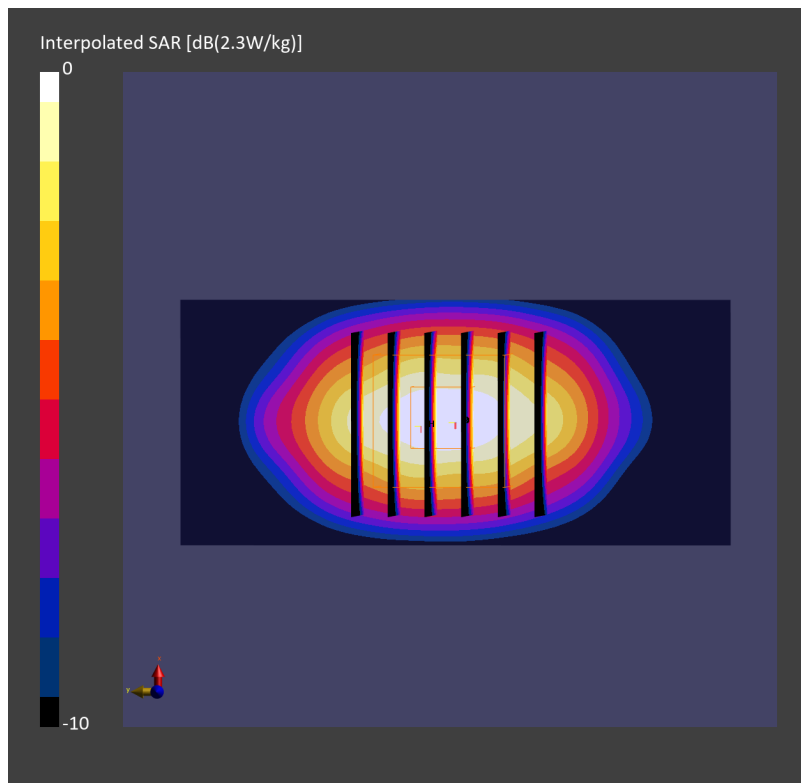
Pin=17.0dBm/Area Scan (40.0 mm x 90.0 mm): Measurement Grid: 10.0 mm x 15.0 mm

SAR (1g) = 1.84 W/kg; SAR (10g) = 0.96 W/kg;

Pin=17.0dBm/Zoom Scan (30.0 mm x 30.0 mm x 30.0 mm): Measurement Grid: 6.0 mm x 6.0 mm x 1.5 mm

Power Drift = 0.02 dB

SAR (1g) = 1.83 W/kg; SAR (8g) = 1.03 W/kg; SAR (10g) = 0.943 W/kg



System Check_Head_2600MHz

DUT: D2600V2 - SN1008

Communication System: CW; Frequency: 2600.000 MHz; Duty Cycle: 1:1

Medium: HSL_2600_20240129 Medium parameters used: $f=2600.000$ MHz; $\sigma=1.95$ S/m; $\epsilon_r=38.0$

Ambient Temperature: 23.5°C; Liquid Temperature: 22.5°C

DASY6 Configuration:

- Probe: EX3DV4 - SN3642; ConvF(7.2, 7.2, 7.2); Calibrated: 2023-04-26
- Sensor-Surface: 1.4 mm
- Electronics: DAE4 Sn854; Calibrated: 2023-08-17
- Phantom: ELI V5.0 (20deg probe tilt); Serial: 1238-; Section: Flat
- Measurement Software: 16.2.4.2524
- UID: CW, 0--

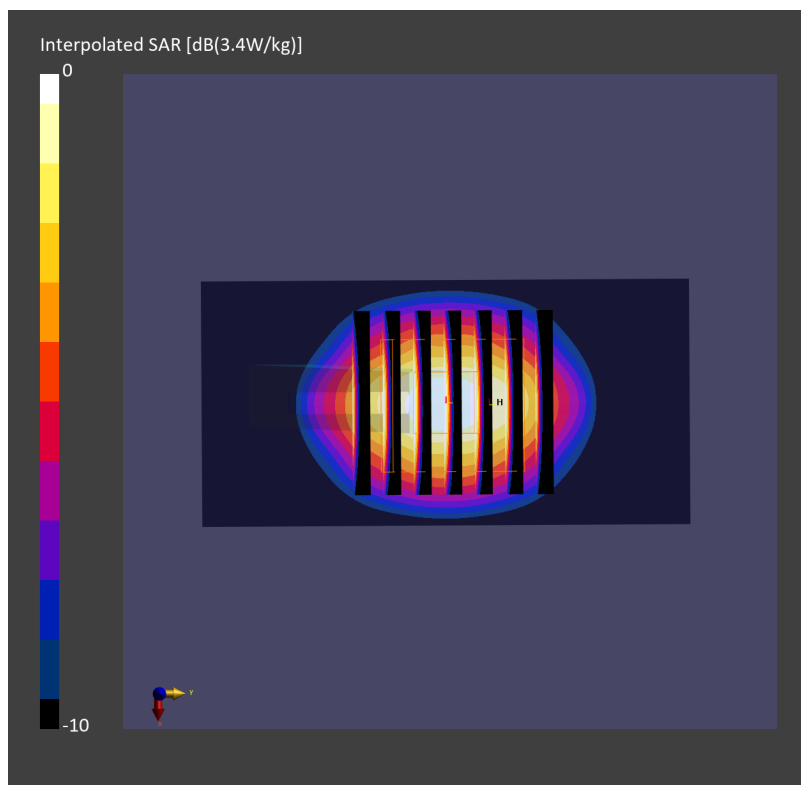
Area Scan (40.0 mm x 80.0 mm): Measurement Grid: 10.0 mm x 10.0 mm

SAR (1g) = 2.55 W/kg; SAR (10g) = 1.14 W/kg;

Zoom Scan (30.0 mm x 30.0 mm x 30.0 mm): Measurement Grid: 5.0 mm x 5.0 mm x 1.5 mm

Power Drift = -0.07 dB

SAR (1g) = 2.74 W/kg; SAR (8g) = 1.36 W/kg; SAR (10g) = 1.23 W/kg



System Check_Head_3700MHz

DUT: D3700V2 - SN1022

Communication System: CW; Frequency: 3700.000 MHz; Duty Cycle: 1:1

Medium: HSL_3700_20240129 Medium parameters used: $f=3700.000$ MHz; $\sigma=3.10$ S/m; $\epsilon_r=37.6$

Ambient Temperature: 23.5°C; Liquid Temperature: 22.5°C

DASY6 Configuration:

- Probe: EX3DV4 - SN3642; ConvF(6.42, 6.42, 6.42); Calibrated: 2023-04-26
- Sensor-Surface: 1.4 mm
- Electronics: DAE4 Sn854; Calibrated: 2023-08-17
- Phantom: ELI V5.0 (20deg probe tilt); Serial: 1238-; Section: Flat
- Measurement Software: 16.2.4.2524
- UID: CW, 0--

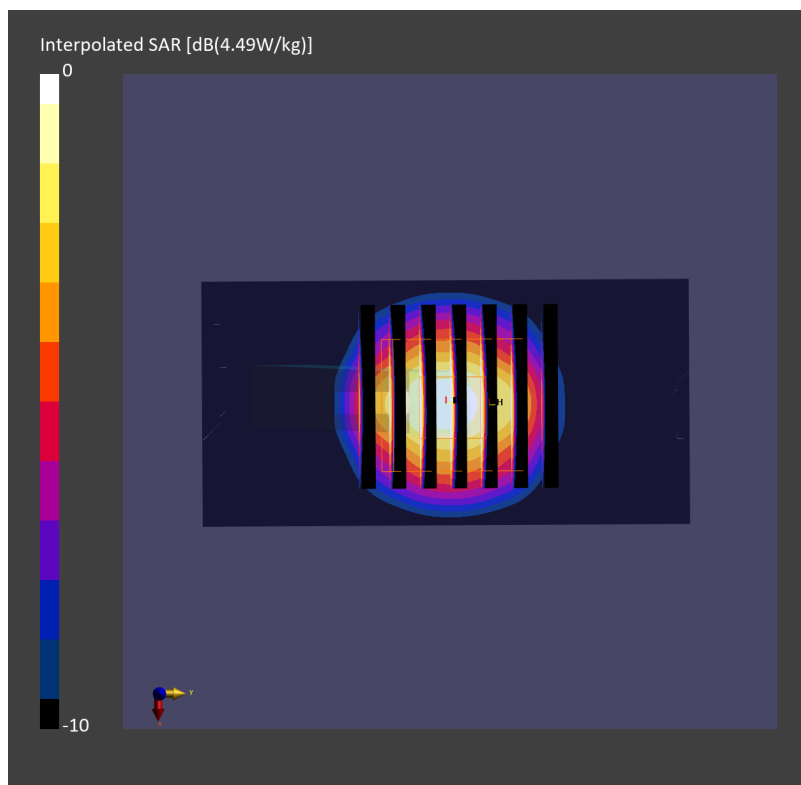
Pin=17.0dBm/Area Scan (40.0 mm x 80.0 mm): Measurement Grid: 10.0 mm x 10.0 mm

SAR (1g) = 3.11 W/kg; SAR (10g) = 1.16 W/kg;

Pin=17.0dBm/Zoom Scan (28.0 mm x 28.0 mm x 28.0 mm): Measurement Grid: 5.0 mm x 5.0 mm x 1.4 mm

Power Drift = -0.06 dB

SAR (1g) = 3.19 W/kg; SAR (8g) = 1.36 W/kg; SAR (10g) = 1.20 W/kg



System Check_Head_3900MHz

DUT: D3900V2 - SN1017

Communication System: CW; Frequency: 3900.000 MHz; Duty Cycle: 1:1

Medium: HSL_3900_20240129 Medium parameters used: $f = 3900.000$ MHz; $\sigma = 3.40$ S/m; $\epsilon_r = 37.4$

Ambient Temperature: 23.5°C; Liquid Temperature: 22.5°C

DASY6 Configuration:

- Probe: EX3DV4 - SN3642; ConvF(6.22, 6.22, 6.22); Calibrated: 2023-04-26
- Sensor-Surface: 1.4 mm
- Electronics: DAE4 Sn854; Calibrated: 2023-08-17
- Phantom: ELI V5.0 (20deg probe tilt); Serial: 1238-; Section: Flat
- Measurement Software: 16.2.4.2524
- UID: CW, 0--

Pin=17.0dBm/Area Scan (40.0 mm x 80.0 mm): Measurement Grid: 10.0 mm x 10.0 mm

SAR (1g) = 3.22 W/kg; SAR (10g) = 1.15 W/kg;

Pin=17.0dBm/Zoom Scan (28.0 mm x 28.0 mm x 28.0 mm): Measurement Grid: 5.0 mm x 5.0 mm x 1.4 mm

Power Drift = -0.04 dB

SAR (1g) = 3.29 W/kg; SAR (8g) = 1.33 W/kg; SAR (10g) = 1.17 W/kg

