

#01_WLAN2.4GHz_802.11b 1Mbps_Right Side_0mm_Ch6;Ant 2

Communication System: 802.11b ; Frequency: 2437 MHz;Duty Cycle: 1:1

Medium: MSL_2450_190114 Medium parameters used : $f = 2437$ MHz; $\sigma = 1.964$ S/m; $\epsilon_r = 52.916$; $\rho = 1000$ kg/m³

Ambient Temperature : 23.6 °C ; Liquid Temperature : 22.6 °C

DASY5 Configuration

- Probe: EX3DV4 - SN7515;ConvF(7.53, 7.53, 7.53) ;Calibrated: 2018/10/3
- Sensor-Surface: 1.4mm (Mechanical Surface Detection)
- Electronics: DAE4 Sn918; Calibrated: 2018/6/20
- Phantom: Twin-SAM V5.0 (30deg probe tilt); Type: QD 000 P40 CD; Serial: 1885
- Measurement SW: DASY52, Version 52.10 (2); SEMCAD X Version 14.6.12 (7450)

Area Scan (101x121x1): Interpolated grid: dx=1.200 mm, dy=1.200 mm

Maximum value of SAR (interpolated) = 1.53 W/kg

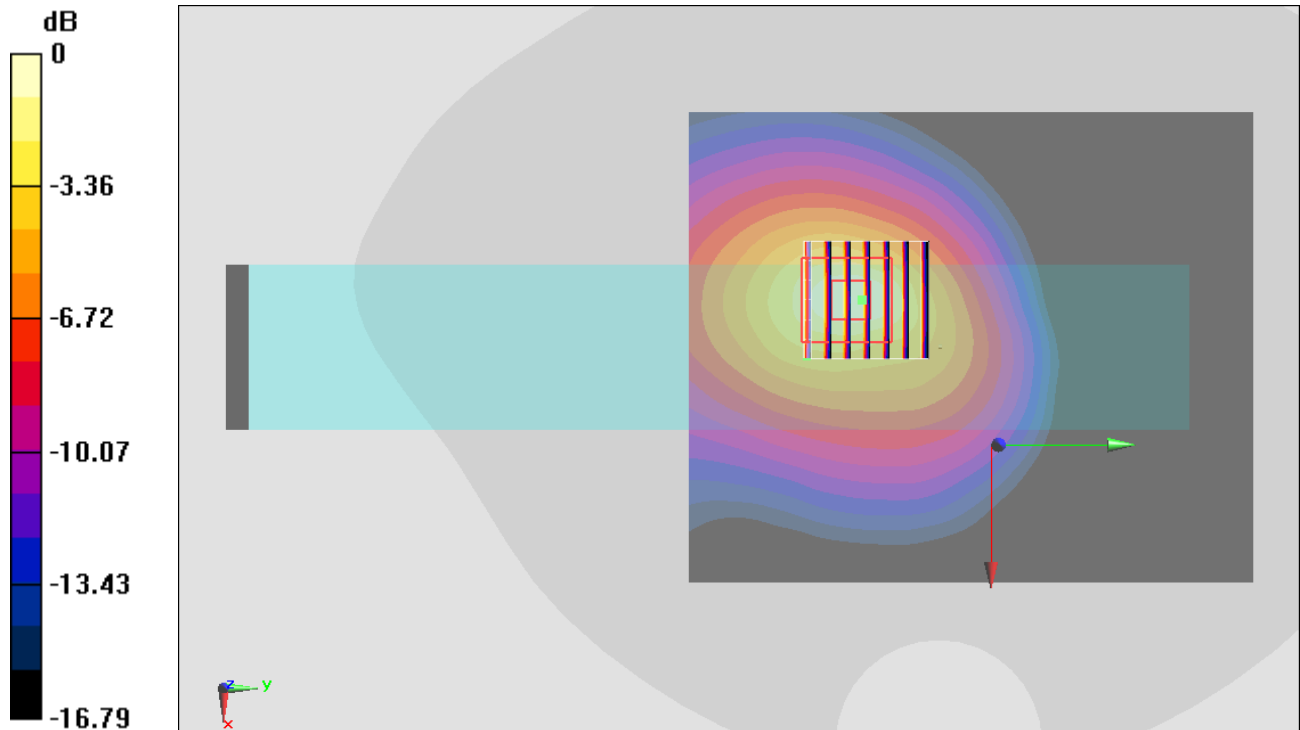
Zoom Scan (7x7x7)/Cube 0: Measurement grid: dx=5mm, dy=5mm, dz=5mm

Reference Value = 27.91 V/m; Power Drift = 0.01 dB

Peak SAR (extrapolated) = 1.87 W/kg

SAR(1 g) = 1.01 W/kg; SAR(10 g) = 0.515 W/kg

Maximum value of SAR (measured) = 1.53 W/kg



0 dB = 1.53 W/kg = 1.85 dBW/kg

#02_WLAN5GHz_802.11a 6Mbps_Left Side_0mm_Ch56;Ant 1

Communication System: 802.11a; Frequency: 5280 MHz; Duty Cycle: 1:1.044

Medium: MSL_5G_190114 Medium parameters used: $f = 5280$ MHz; $\sigma = 5.472$ S/m; $\epsilon_r = 49.091$; $\rho = 1000$ kg/m³

Ambient Temperature : 23.6 °C ; Liquid Temperature : 22.6 °C

DASY5 Configuration

- Probe: EX3DV4 - SN7515; ConvF(4.96, 4.96, 4.96) ; Calibrated: 2018/10/3
- Sensor-Surface: 1.4mm (Mechanical Surface Detection)
- Electronics: DAE4 Sn918; Calibrated: 2018/6/20
- Phantom: Twin-SAM V5.0 (30deg probe tilt); Type: QD 000 P40 CD; Serial: 1885
- Measurement SW: DASY52, Version 52.10 (2); SEMCAD X Version 14.6.12 (7450)

Area Scan (121x141x1): Interpolated grid: dx=1.000 mm, dy=1.000 mm

Maximum value of SAR (interpolated) = 1.09 W/kg

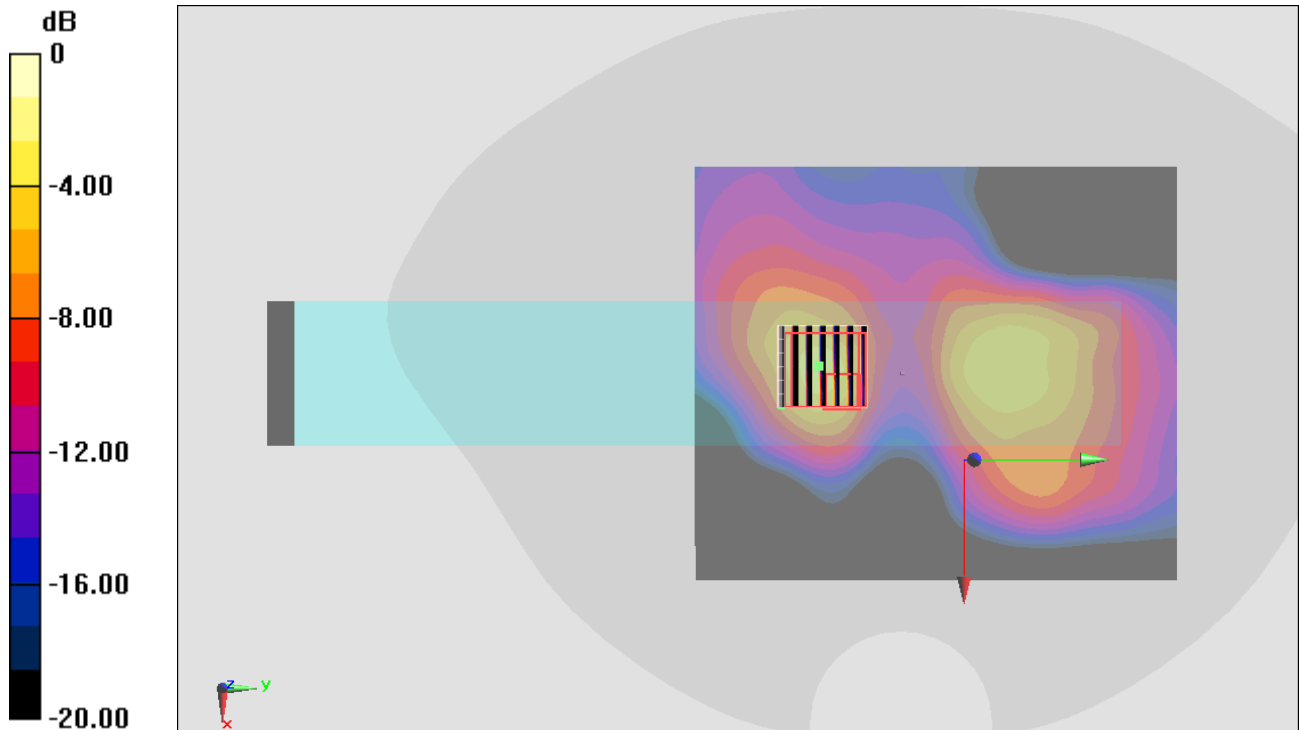
Zoom Scan (7x7x7)/Cube 0: Measurement grid: dx=4mm, dy=4mm, dz=1.4mm

Reference Value = 12.49 V/m; Power Drift = -0.04 dB

Peak SAR (extrapolated) = 3.43 W/kg

SAR(1 g) = 0.902 W/kg; SAR(10 g) = 0.194 W/kg

Maximum value of SAR (measured) = 2.27 W/kg



0 dB = 2.27 W/kg = 3.56 dBW/kg

#03_WLAN5GHz_802.11a 6Mbps_Left Side_0mm_Ch116;Ant 1

Communication System: 802.11a; Frequency: 5580 MHz; Duty Cycle: 1:1.044

Medium: MSL_5G_190124 Medium parameters used: $f = 5580$ MHz; $\sigma = 5.881$ S/m; $\epsilon_r = 48.253$; $\rho = 1000$ kg/m³

Ambient Temperature : 23.7 °C ; Liquid Temperature : 22.7 °C

DASY5 Configuration

- Probe: EX3DV4 - SN7375; ConvF(4, 4, 4) ; Calibrated: 2018/12/13
- Sensor-Surface: 1.4mm (Mechanical Surface Detection)
- Electronics: DAE4 Sn914; Calibrated: 2018/12/11
- Phantom: Twin-SAM V5.0 (30deg probe tilt); Type: QD 000 P40 CD; Serial: 1885
- Measurement SW: DASY52, Version 52.10 (2); SEMCAD X Version 14.6.12 (7450)

Area Scan (121x141x1): Interpolated grid: dx=1.000 mm, dy=1.000 mm

Maximum value of SAR (interpolated) = 1.57 W/kg

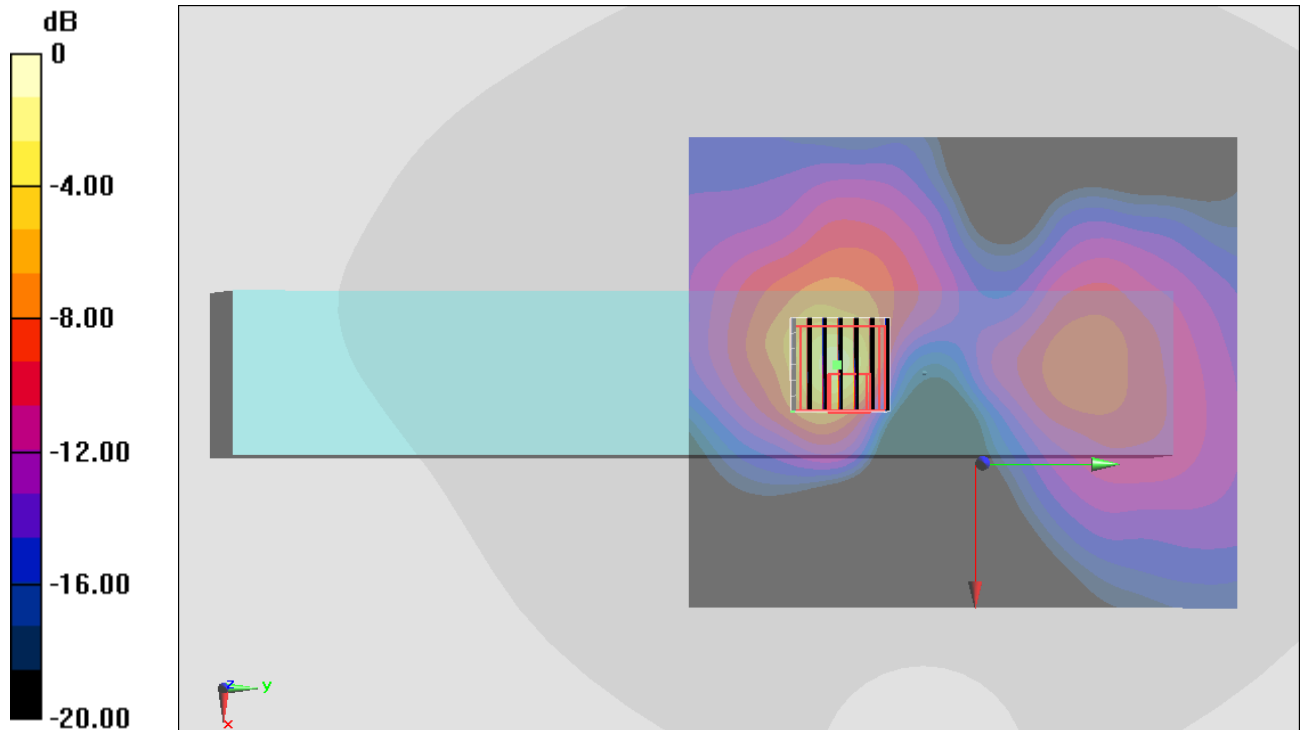
Zoom Scan (7x7x7)/Cube 0: Measurement grid: dx=4mm, dy=4mm, dz=1.4mm

Reference Value = 9.937 V/m; Power Drift = -0.01 dB

Peak SAR (extrapolated) = 4.13 W/kg

SAR(1 g) = 0.887 W/kg; SAR(10 g) = 0.172 W/kg

Maximum value of SAR (measured) = 2.48 W/kg



0 dB = 2.48 W/kg = 3.94 dBW/kg

#04_WLAN5GHz_802.11a 6Mbps_Left Side_0mm_Ch157;Ant 1

Communication System: 802.11a ; Frequency: 5785 MHz;Duty Cycle: 1:1.044

Medium: MSL_5G_190115 Medium parameters used : $f = 5785$ MHz; $\sigma = 5.981$ S/m; $\epsilon_r = 48.311$; $\rho = 1000$ kg/m³

Ambient Temperature : 23.4 °C ; Liquid Temperature : 22.4 °C

DASY5 Configuration

- Probe: EX3DV4 - SN7375;ConvF(4.27, 4.27, 4.27) ;Calibrated: 2018/12/13
- Sensor-Surface: 1.4mm (Mechanical Surface Detection)
- Electronics: DAE4 Sn914; Calibrated: 2018/12/11
- Phantom: Twin-SAM V5.0 (30deg probe tilt); Type: QD 000 P40 CD; Serial: 1885
- Measurement SW: DASY52, Version 52.10 (2); SEMCAD X Version 14.6.12 (7450)

Area Scan (121x141x1): Interpolated grid: dx=1.000 mm, dy=1.000 mm

Maximum value of SAR (interpolated) = 1.95 W/kg

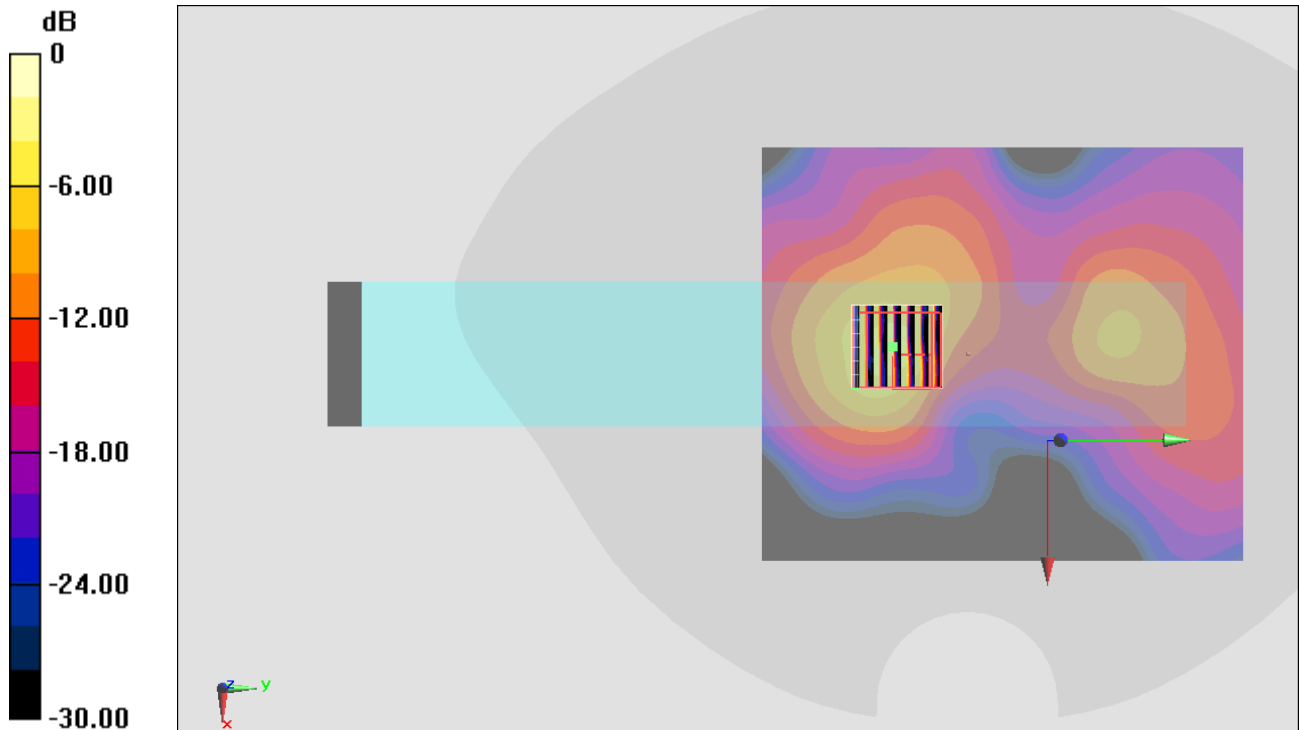
Zoom Scan (7x7x7)/Cube 0: Measurement grid: dx=4mm, dy=4mm, dz=1.4mm

Reference Value = 10.463 V/m; Power Drift = -0.13 dB

Peak SAR (extrapolated) = 5.06 W/kg

SAR(1 g) = 1.19 W/kg; SAR(10 g) = 0.204 W/kg

Maximum value of SAR (measured) = 2.84 W/kg



0 dB = 2.84 W/kg = 4.53 dBW/kg

#05_WLAN2.4GHz_802.11b 1Mbps_Back_0mm_Ch6;Ant 2

Communication System: 802.11b ; Frequency: 2437 MHz;Duty Cycle: 1:1

Medium: MSL_2450_190115 Medium parameters used : $f = 2437$ MHz; $\sigma = 2.008$ S/m; $\epsilon_r = 52.24$; $\rho = 1000$ kg/m³

Ambient Temperature : 23.4 °C ; Liquid Temperature : 22.4 °C

DASY5 Configuration

- Probe: EX3DV4 - SN7375;ConvF(7.81, 7.81, 7.81) ;Calibrated: 2018/12/13
- Sensor-Surface: 1.4mm (Mechanical Surface Detection)
- Electronics: DAE4 Sn914; Calibrated: 2018/12/11
- Phantom: Twin-SAM V5.0 (30deg probe tilt); Type: QD 000 P40 CD; Serial: 1885
- Measurement SW: DASY52, Version 52.10 (2); SEMCAD X Version 14.6.12 (7450)

Area Scan (81x81x1): Interpolated grid: dx=1.200 mm, dy=1.200 mm

Maximum value of SAR (interpolated) = 0.790 W/kg

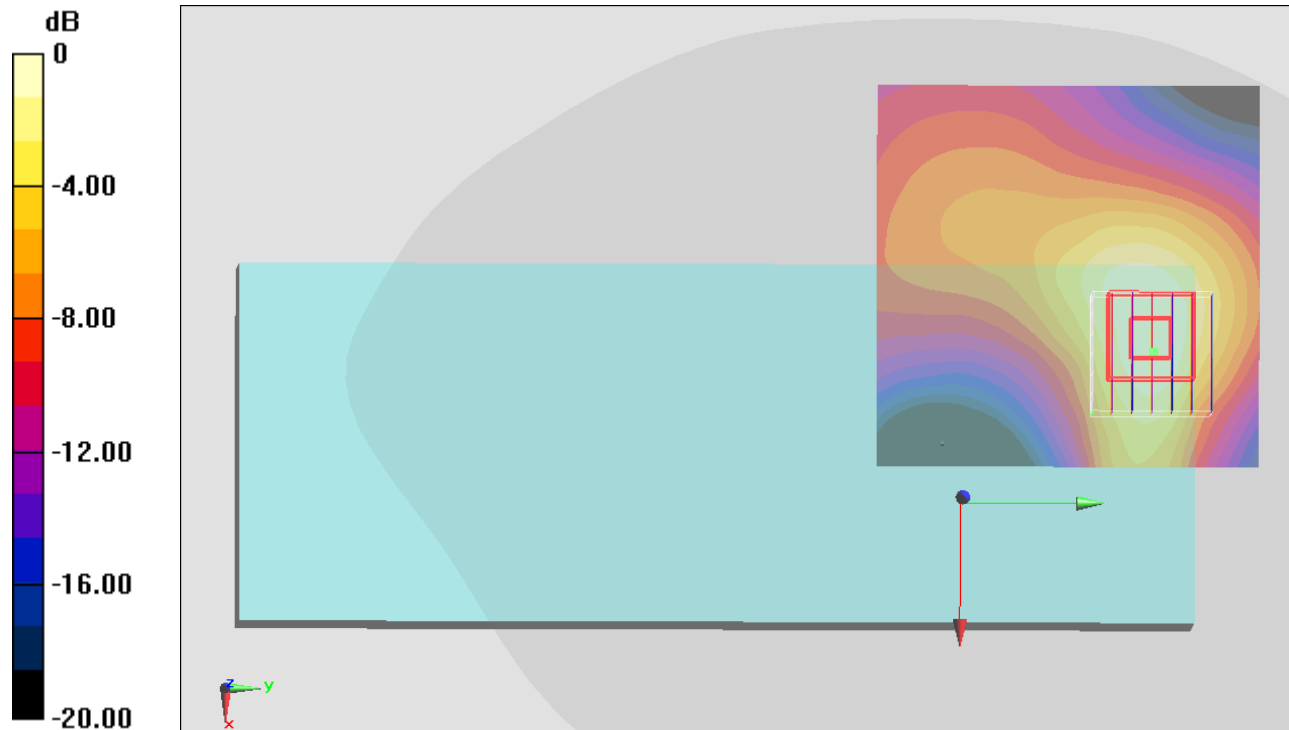
Zoom Scan (7x7x7)/Cube 0: Measurement grid: dx=5mm, dy=5mm, dz=5mm

Reference Value = 20.12 V/m; Power Drift = -0.04 dB

Peak SAR (extrapolated) = 0.959 W/kg

SAR(1 g) = 0.518 W/kg; SAR(10 g) = 0.280 W/kg

Maximum value of SAR (measured) = 0.785 W/kg



0 dB = 0.790 W/kg = -1.02 dBW/kg

#06_WLAN5GHz_802.11a 6Mbps_Back_0mm_Ch60;Ant 2

Communication System: 802.11a; Frequency: 5300 MHz; Duty Cycle: 1:1.044

Medium: MSL_5G_190114 Medium parameters used : $f = 5300$ MHz; $\sigma = 5.486$ S/m; $\epsilon_r = 49.083$; $\rho = 1000$ kg/m³

Ambient Temperature : 23.6 °C ; Liquid Temperature : 22.6 °C

DASY5 Configuration

- Probe: EX3DV4 - SN7515; ConvF(4.96, 4.96, 4.96) ; Calibrated: 2018/10/3
- Sensor-Surface: 1.4mm (Mechanical Surface Detection)
- Electronics: DAE4 Sn918; Calibrated: 2018/6/20
- Phantom: Twin-SAM V5.0 (30deg probe tilt); Type: QD 000 P40 CD; Serial: 1885
- Measurement SW: DASY52, Version 52.10 (2); SEMCAD X Version 14.6.12 (7450)

Area Scan (121x141x1): Interpolated grid: dx=1.000 mm, dy=1.000 mm

Maximum value of SAR (interpolated) = 1.21 W/kg

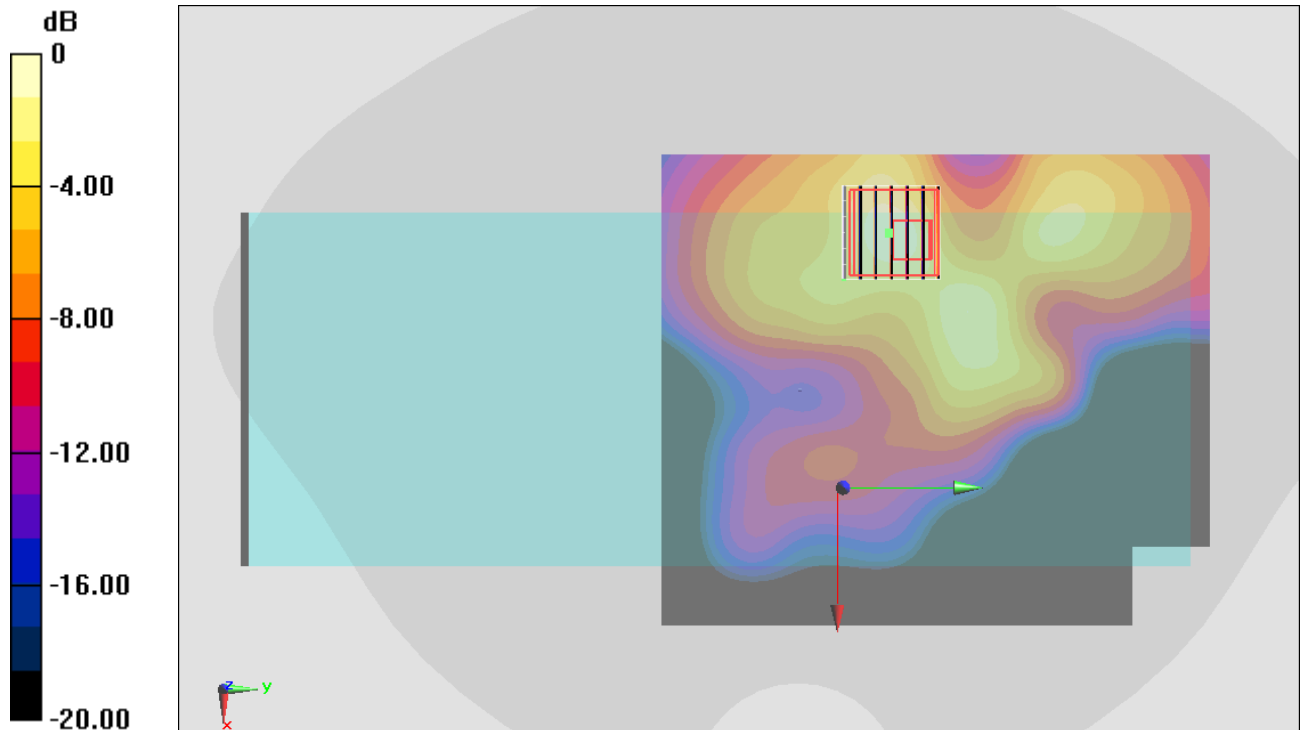
Zoom Scan (7x7x7)/Cube 0: Measurement grid: dx=4mm, dy=4mm, dz=1.4mm

Reference Value = 11.08 V/m; Power Drift = -0.07 dB

Peak SAR (extrapolated) = 1.99 W/kg

SAR(1 g) = 0.569 W/kg; SAR(10 g) = 0.215 W/kg

Maximum value of SAR (measured) = 1.26 W/kg



0 dB = 1.26 W/kg = 1.00 dBW/kg

#07_WLAN5GHz_802.11a 6Mbps_Back_0mm_Ch132;Ant 2

Communication System: 802.11a; Frequency: 5660 MHz; Duty Cycle: 1:1.044

Medium: MSL_5G_190124 Medium parameters used: $f = 5660$ MHz; $\sigma = 5.986$ S/m; $\epsilon_r = 48.088$; $\rho = 1000$ kg/m³

Ambient Temperature : 23.7 °C ; Liquid Temperature : 22.7 °C

DASY5 Configuration

- Probe: EX3DV4 - SN7375; ConvF(4, 4, 4) ; Calibrated: 2018/12/13
- Sensor-Surface: 1.4mm (Mechanical Surface Detection)
- Electronics: DAE4 Sn914; Calibrated: 2018/12/11
- Phantom: Twin-SAM V5.0 (30deg probe tilt); Type: QD 000 P40 CD; Serial: 1885
- Measurement SW: DASY52, Version 52.10 (2); SEMCAD X Version 14.6.12 (7450)

Area Scan (121x141x1): Interpolated grid: dx=1.000 mm, dy=1.000 mm

Maximum value of SAR (interpolated) = 1.25 W/kg

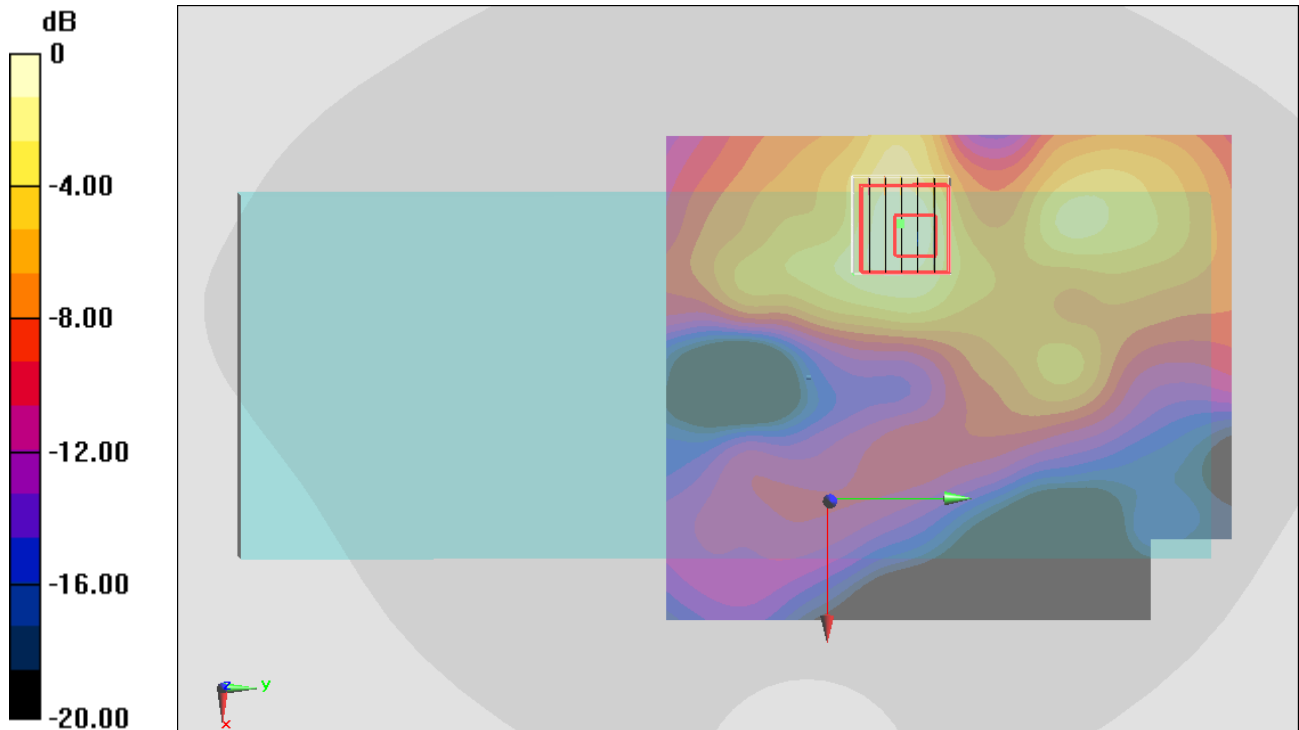
Zoom Scan (7x7x7)/Cube 0: Measurement grid: dx=4mm, dy=4mm, dz=1.4mm

Reference Value = 8.477 V/m; Power Drift = -0.05 dB

Peak SAR (extrapolated) = 2.11 W/kg

SAR(1 g) = 0.548 W/kg; SAR(10 g) = 0.215 W/kg

Maximum value of SAR (measured) = 1.24 W/kg



0 dB = 1.25 W/kg = 0.97 dBW/kg

#08_WLAN5GHz_802.11a 6Mbps_Back_0mm_Ch157;Ant 1

Communication System: 802.11a; Frequency: 5785 MHz; Duty Cycle: 1:1.044

Medium: MSL_5G_190124 Medium parameters used : $f = 5785$ MHz; $\sigma = 6.169$ S/m; $\epsilon_r = 47.899$; $\rho = 1000$ kg/m³

Ambient Temperature : 23.7 °C ; Liquid Temperature : 22.7 °C

DASY5 Configuration

- Probe: EX3DV4 - SN7375; ConvF(4.27, 4.27, 4.27) ; Calibrated: 2018/12/13
- Sensor-Surface: 1.4mm (Mechanical Surface Detection)
- Electronics: DAE4 Sn914; Calibrated: 2018/12/11
- Phantom: Twin-SAM V5.0 (30deg probe tilt); Type: QD 000 P40 CD; Serial: 1885
- Measurement SW: DASY52, Version 52.10 (2); SEMCAD X Version 14.6.12 (7450)

Area Scan (121x141x1): Interpolated grid: dx=1.000 mm, dy=1.000 mm

Maximum value of SAR (interpolated) = 1.09 W/kg

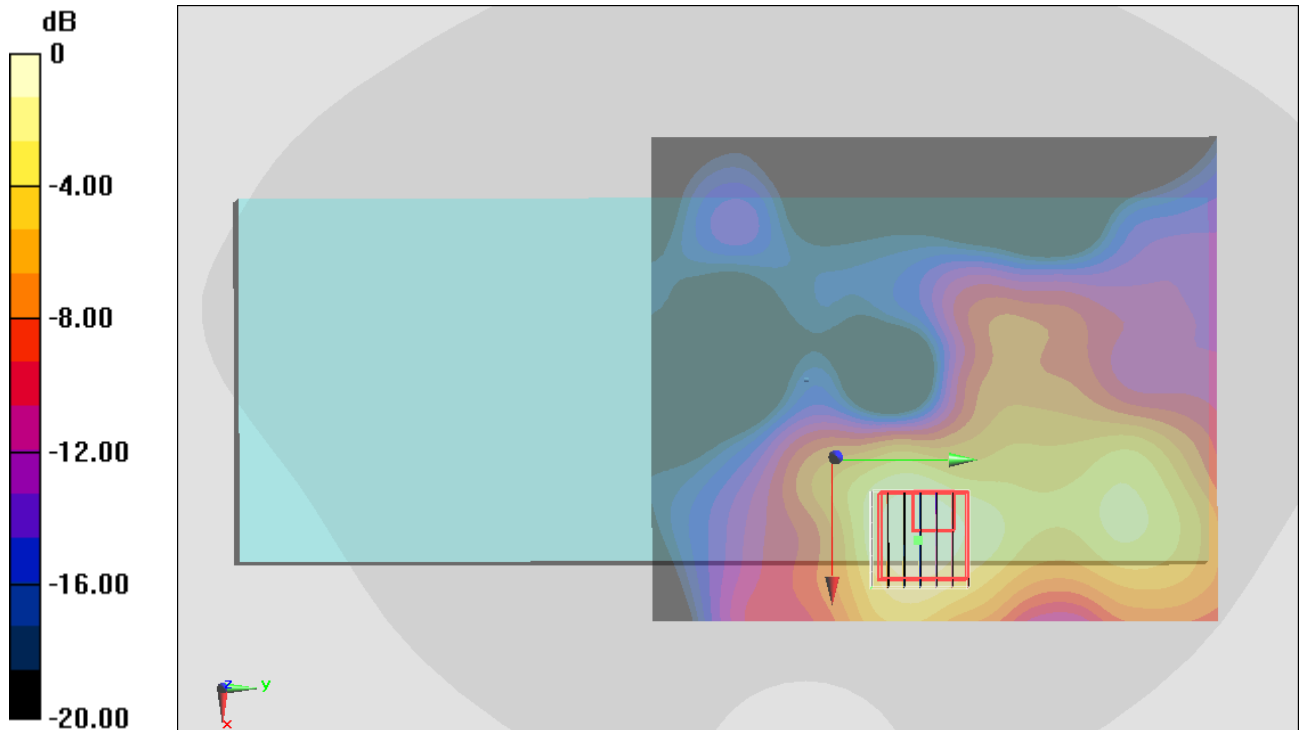
Zoom Scan (7x7x7)/Cube 0: Measurement grid: dx=4mm, dy=4mm, dz=1.4mm

Reference Value = 15.22 V/m; Power Drift = -0.15 dB

Peak SAR (extrapolated) = 2.61 W/kg

SAR(1 g) = 0.661 W/kg; SAR(10 g) = 0.238 W/kg

Maximum value of SAR (measured) = 1.56 W/kg



0 dB = 1.09 W/kg = 0.37 dBW/kg