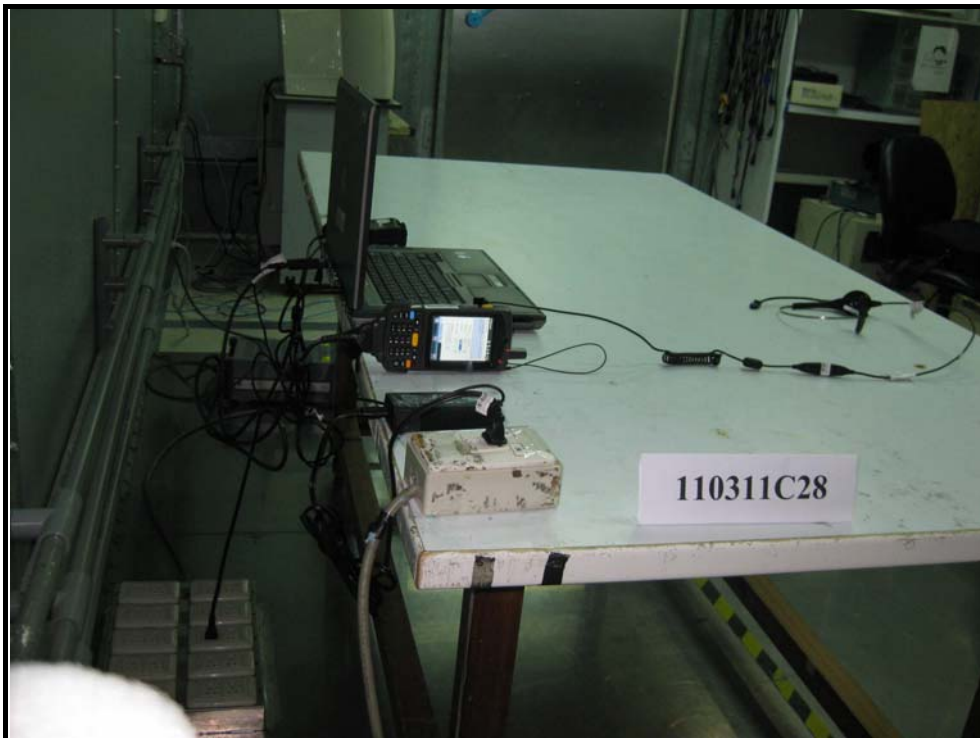


PHOTOGRAPHS OF THE TEST CONFIGURATION CONDUCTED EMISSION TEST (FOR WLAN & BLUETOOTH)



RADIATED EMISSION TEST
(FOR WLAN & BLUETOOTH & RF ID)



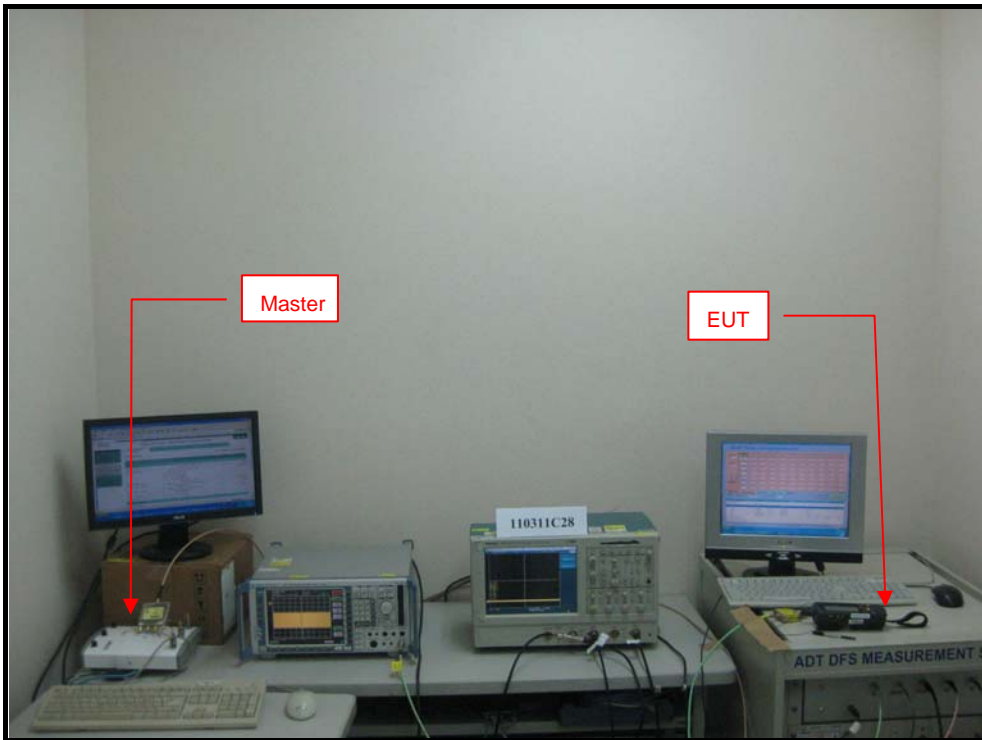
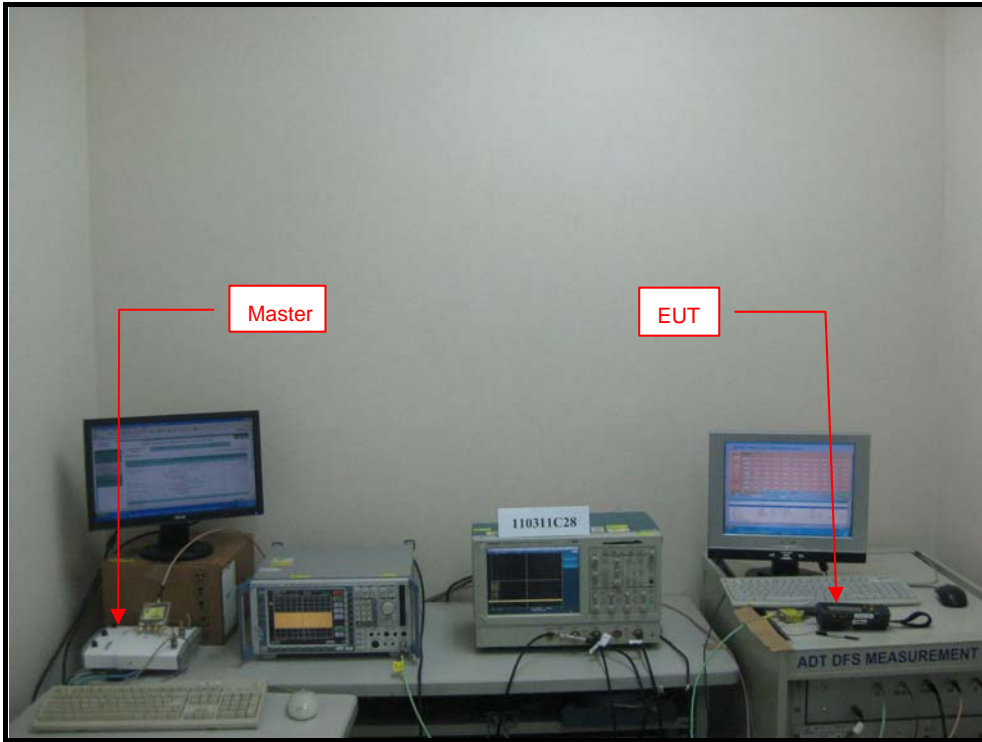
(For PART 22)



(For PART 24)



(For DFS Test)



(SAR Test Set Up Photos)

A. RIGHT HEAD POSITION:



CHEEK



TILT

B. LEFT HEAD POSITION:



CHEEK



TILT

C. BODY POSITION

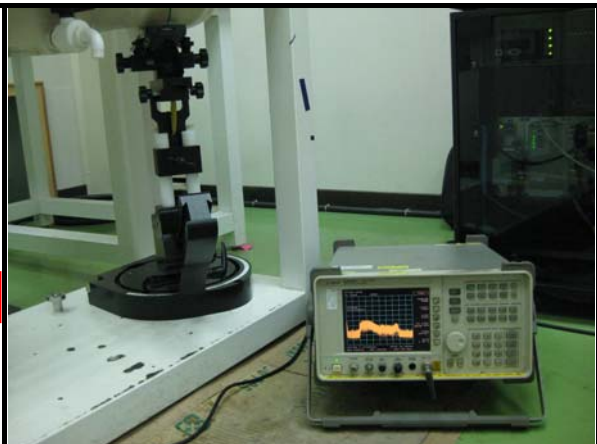


FRONT (with Ridged Holster)



BOTTOM (with Fabric Holster)

DESCRIPTION OF ANTENNA LOCATION:



DESCRIPTION OF ANTENNA LOCATION

TEST SET UP PHOTO



FABRIC HOLSTER_FRONT

FABRIC HOLSTER_BOTTOM



RIDGED HOLSTER_FRONT

RIDGED HOLSTER_BOTTOM