

#01_WLAN2.4GHz_802.11b 1Mbps_Right Tilted_Ch11

Communication System: 802.11b; Frequency: 2462 MHz; Duty Cycle: 1:1

Medium: HSL_2450_170802 Medium parameters used: $f = 2462$ MHz; $\sigma = 1.794$ S/m; $\epsilon_r = 38.71$; $\rho = 1000$ kg/m³

Ambient Temperature : 23.5 °C; Liquid Temperature : 22.5 °C

DASY5 Configuration

- Probe: EX3DV4 - SN3931; ConvF(7.6, 7.6, 7.6); Calibrated: 2016/10/3;
- Sensor-Surface: 1.4mm (Mechanical Surface Detection)
- Electronics: DAE3 Sn577; Calibrated: 2016/9/28
- Phantom: SAM_Left; Type: QD000P40CD; Serial: S/N:1796
- Measurement SW: DASY52, Version 52.8 (8); SEMCAD X Version 14.6.10 (7373)

Area Scan (81x81x1): Interpolated grid: dx=1.200 mm, dy=1.200 mm

Maximum value of SAR (interpolated) = 0.283 W/kg

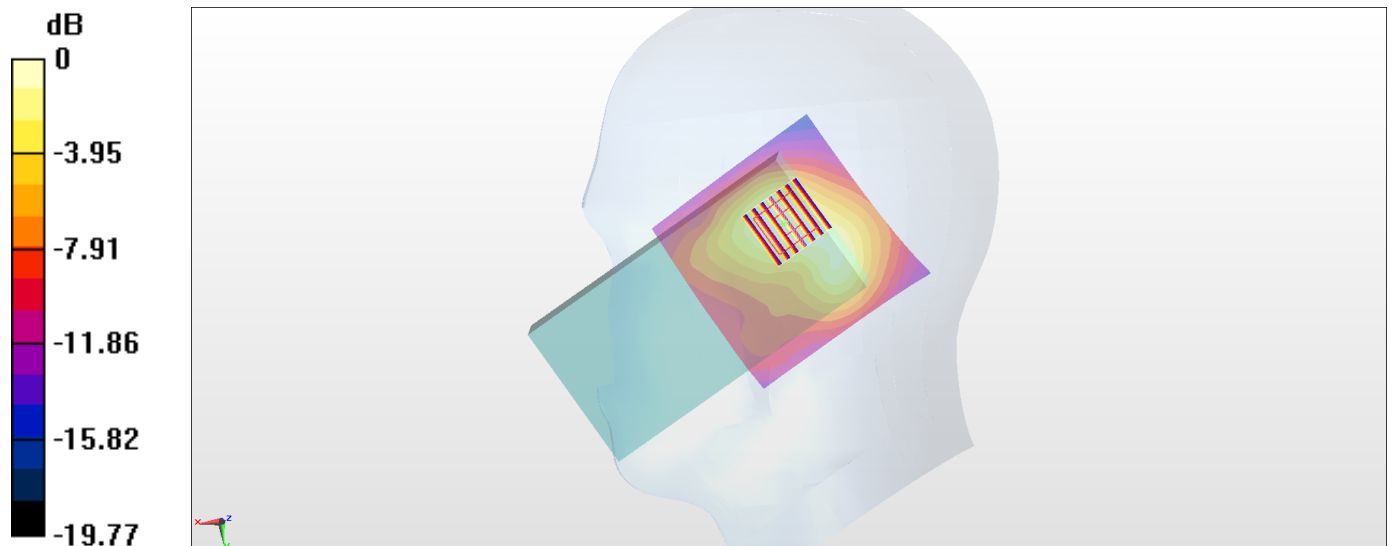
Zoom Scan (7x7x7)/Cube 0: Measurement grid: dx=5mm, dy=5mm, dz=5mm

Reference Value = 9.704 V/m; Power Drift = 0.07 dB

Peak SAR (extrapolated) = 0.324 W/kg

SAR(1 g) = 0.101 W/kg; SAR(10 g) = 0.056 W/kg

Maximum value of SAR (measured) = 0.275 W/kg



0 dB = 0.275 W/kg = -5.61 dBW/kg

#02_WLAN5GHz_802.11a_6Mbps_Right Tilted_Ch64

Communication System: 802.11a; Frequency: 5320 MHz; Duty Cycle: 1:1.020

Medium: HSL_5G_170803 Medium parameters used: $f = 5320$ MHz; $\sigma = 4.735$ S/m; $\epsilon_r = 36.804$; $\rho = 1000$ kg/m³

Ambient Temperature : 23.6 °C; Liquid Temperature : 22.6 °C

DASY5 Configuration

- Probe: EX3DV4 - SN3931; ConvF(5.38, 5.38, 5.38); Calibrated: 2016/10/3;
- Sensor-Surface: 1.4mm (Mechanical Surface Detection)
- Electronics: DAE3 Sn577; Calibrated: 2016/9/28
- Phantom: SAM_Left; Type: QD000P40CD; Serial: S/N:1796
- Measurement SW: DASY52, Version 52.8 (8); SEMCAD X Version 14.6.10 (7373)

Area Scan (91x81x1): Interpolated grid: dx=1.000 mm, dy=1.000 mm

Maximum value of SAR (interpolated) = 0.341 W/kg

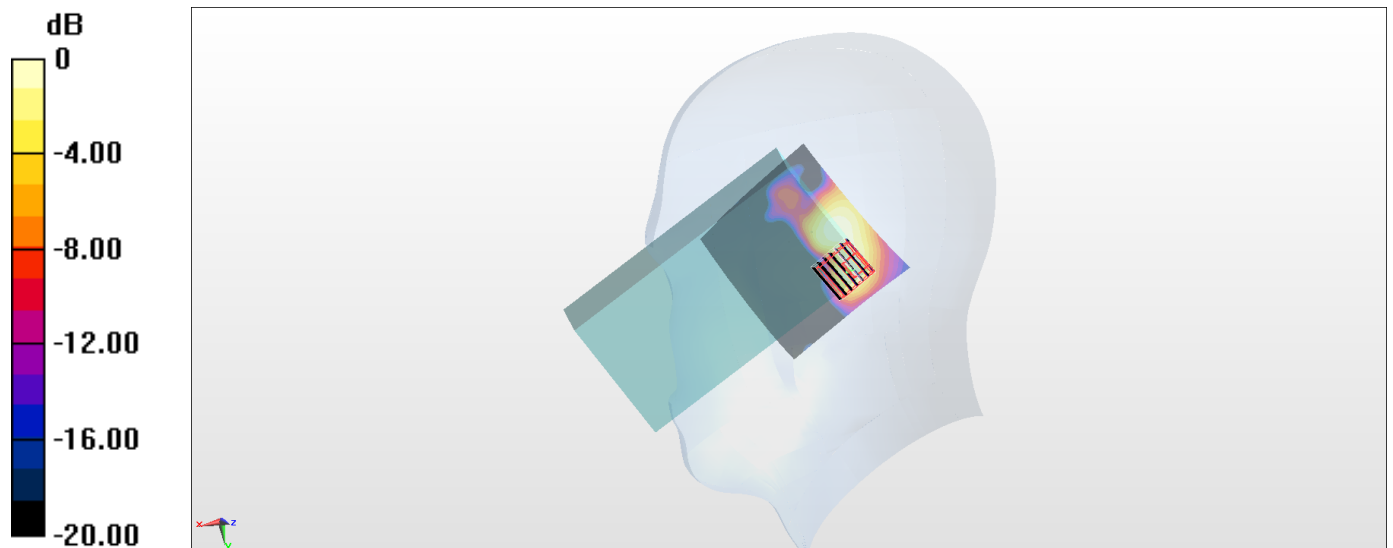
Zoom Scan (7x7x7)/Cube 0: Measurement grid: dx=4mm, dy=4mm, dz=1.4mm

Reference Value = 8.778 V/m; Power Drift = 0.04 dB

Peak SAR (extrapolated) = 1.01 W/kg

SAR(1 g) = 0.162 W/kg; SAR(10 g) = 0.049 W/kg

Maximum value of SAR (measured) = 0.340 W/kg



0 dB = 0.340 W/kg = -4.69 dBW/kg

#03_WLAN5GHz_802.11a 6Mbps_Right Tilted_Ch140

Communication System: 802.11a ; Frequency: 5700 MHz; Duty Cycle: 1:1.020

Medium: HSL_5G_170804 Medium parameters used: $f = 5700$ MHz; $\sigma = 5.079$ S/m; $\epsilon_r = 36.166$; $\rho = 1000$ kg/m³

Ambient Temperature : 23.6 °C ; Liquid Temperature : 22.6 °C

DASY5 Configuration:

- Probe: EX3DV4 - SN3925; ConvF(4.72, 4.72, 4.72); Calibrated: 2017/5/24;
- Sensor-Surface: 1.4mm (Mechanical Surface Detection)
- Electronics: DAE3 Sn495; Calibrated: 2017/5/22
- Phantom: SAM-Right; Type: SAM; Serial: TP-1303
- Measurement SW: DASY52, Version 52.8 (8); SEMCAD X Version 14.6.10 (7373)

Area Scan (91x81x1): Interpolated grid: dx=1.000 mm, dy=1.000 mm

Maximum value of SAR (interpolated) = 0.621 W/kg

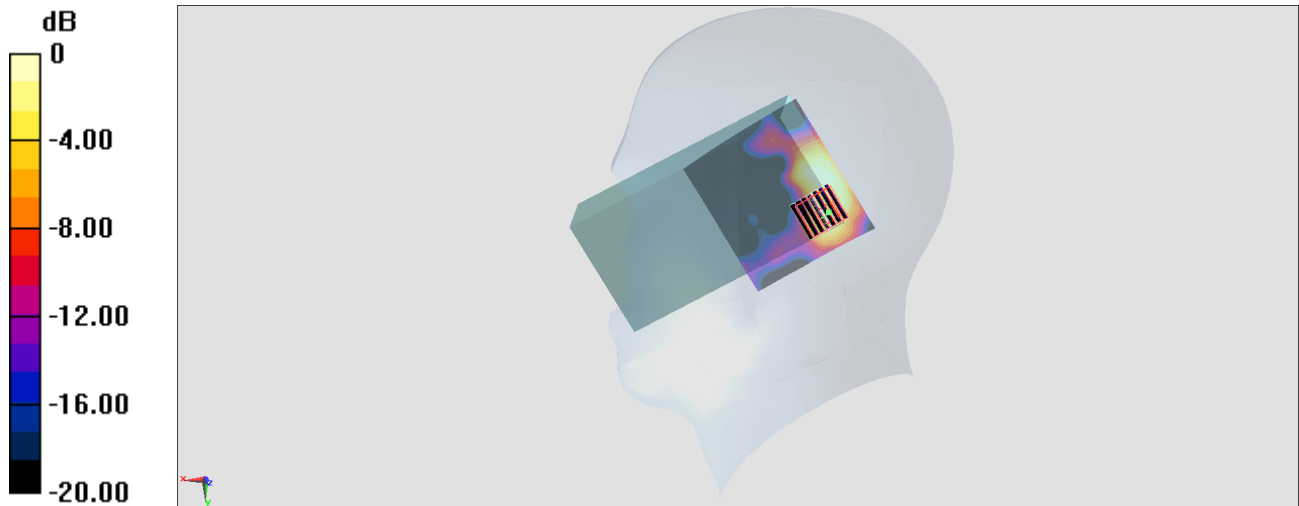
Zoom Scan (7x7x7)/Cube 0: Measurement grid: dx=4mm, dy=4mm, dz=1.4mm

Reference Value = 9.751 V/m; Power Drift = 0.02 dB

Peak SAR (extrapolated) = 0.924 W/kg

SAR(1 g) = 0.237 W/kg; SAR(10 g) = 0.075 W/kg

Maximum value of SAR (measured) = 0.587 W/kg



0 dB = 0.587 W/kg = -2.31 dBW/kg

#04_WLAN5GHz_802.11n-HT20 MCS0_Left Tilted_Ch149

Communication System: 802.11n; Frequency: 5745 MHz; Duty Cycle: 1:1.020

Medium: HSL_5G_170804 Medium parameters used: $f = 5745$ MHz; $\sigma = 5.147$ S/m; $\epsilon_r = 36.107$; $\rho = 1000$ kg/m³

Ambient Temperature : 23.6 °C ; Liquid Temperature : 22.6 °C

DASY5 Configuration:

- Probe: EX3DV4 - SN3925; ConvF(4.87, 4.87, 4.87); Calibrated: 2017/5/24;
- Sensor-Surface: 1.4mm (Mechanical Surface Detection)
- Electronics: DAE3 Sn495; Calibrated: 2017/5/22
- Phantom: SAM-Right; Type: SAM; Serial: TP-1303
- Measurement SW: DASY52, Version 52.8 (8); SEMCAD X Version 14.6.10 (7373)

Area Scan (91x81x1): Interpolated grid: dx=1.000 mm, dy=1.000 mm

Maximum value of SAR (interpolated) = 0.599 W/kg

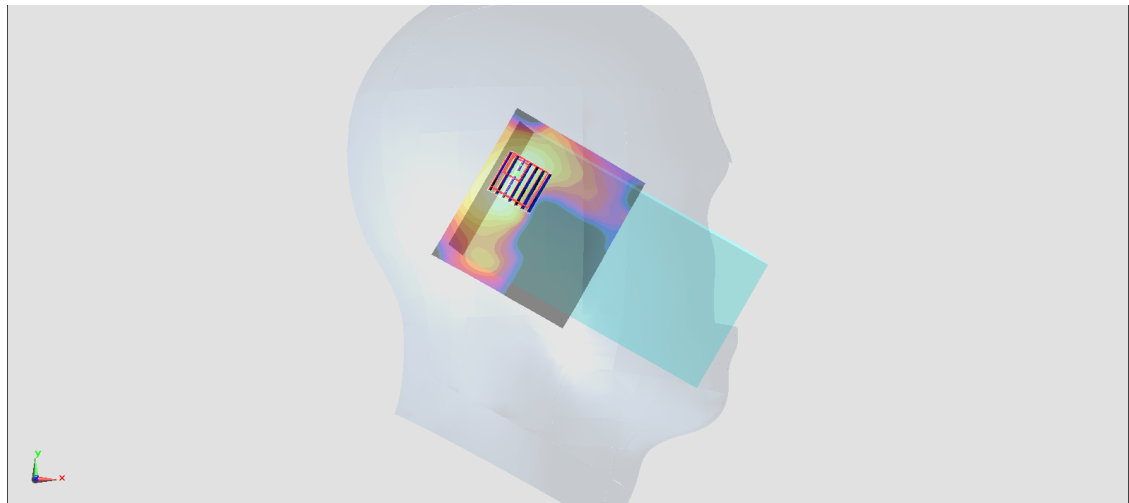
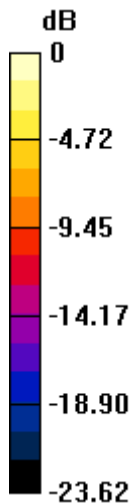
Zoom Scan (7x7x7)/Cube 0: Measurement grid: dx=4mm, dy=4mm, dz=1.4mm

Reference Value = 11.55 V/m; Power Drift = -0.11 dB

Peak SAR (extrapolated) = 0.876 W/kg

SAR(1 g) = 0.218 W/kg; SAR(10 g) = 0.067 W/kg

Maximum value of SAR (measured) = 0.518 W/kg



0 dB = 0.518 W/kg = -2.86 dBW/kg

#05_WLAN2.4GHz_802.11b 1Mbps_Front_0mm_Ch11;Rigid Holster

Communication System: 802.11b ; Frequency: 2462 MHz;Duty Cycle: 1:1

Medium: MSL_2450_170802 Medium parameters used: $f = 2462$ MHz; $\sigma = 2.02$ S/m; $\epsilon_r = 54.33$; $\rho = 1000$ kg/m³

Ambient Temperature : 23.7 °C ; Liquid Temperature : 22.7 °C

DASY5 Configuration:

- Probe: EX3DV4 - SN3925; ConvF(7.94, 7.94, 7.94); Calibrated: 2017/5/24;
- Sensor-Surface: 1.4mm (Mechanical Surface Detection)
- Electronics: DAE3 Sn495; Calibrated: 2017/5/22
- Phantom: SAM-Right; Type: SAM; Serial: TP-1303
- Measurement SW: DASY52, Version 52.8 (8);SEMCAD X Version 14.6.10 (7373)

Area Scan (81x81x1): Interpolated grid: dx=1.200 mm, dy=1.200 mm

Maximum value of SAR (interpolated) = 0.0602 W/kg

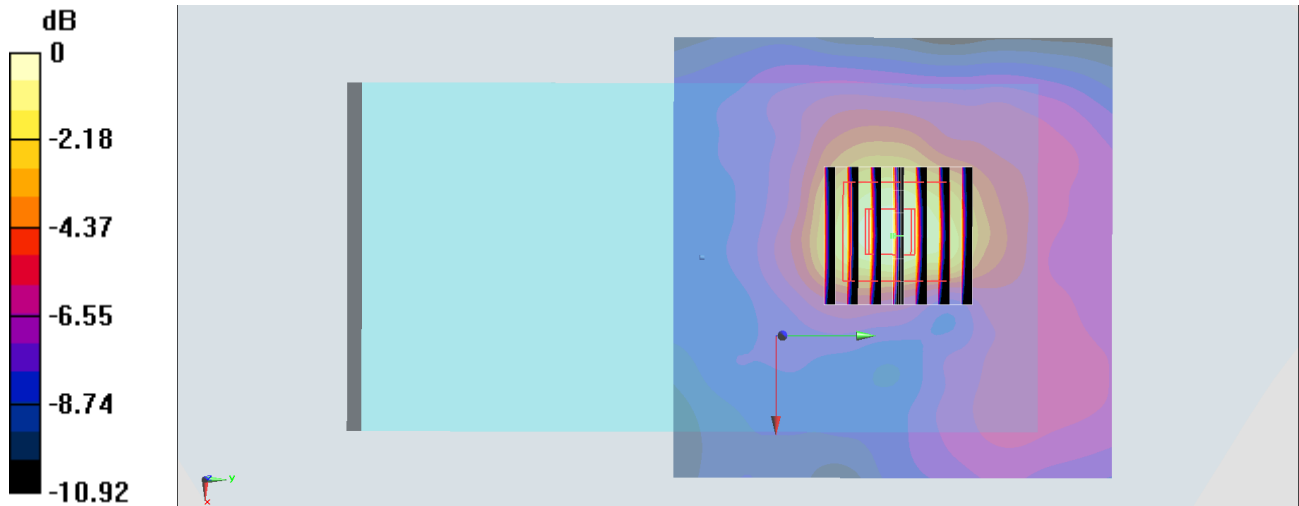
Zoom Scan (7x7x7)/Cube 0: Measurement grid: dx=5mm, dy=5mm, dz=5mm

Reference Value = 2.100 V/m; Power Drift = -0.17 dB

Peak SAR (extrapolated) = 0.0710 W/kg

SAR(1 g) = 0.043 W/kg; SAR(10 g) = 0.023 W/kg

Maximum value of SAR (measured) = 0.0590 W/kg



0 dB = 0.0590 W/kg = -12.29 dBW/kg

#06_WLAN5GHz_802.11a 6Mbps_Back_0mm_Ch64;Soft Holster

Communication System: 802.11a; Frequency: 5320 MHz; Duty Cycle: 1:1.020

Medium: MSL_5G_170803 Medium parameters used: $f = 5320$ MHz; $\sigma = 5.525$ S/m; $\epsilon_r = 47.326$; $\rho = 1000$ kg/m³

Ambient Temperature : 23.6 °C ; Liquid Temperature : 22.6 °C

DASY5 Configuration:

- Probe: EX3DV4 - SN3925; ConvF(4.59, 4.59, 4.59); Calibrated: 2017/5/24;
- Sensor-Surface: 1.4mm (Mechanical Surface Detection)
- Electronics: DAE3 Sn495; Calibrated: 2017/5/22
- Phantom: SAM_Left; Type: QD000P40CD; Serial: TP:1815
- Measurement SW: DASY52, Version 52.8 (8); SEMCAD X Version 14.6.10 (7373)

Area Scan (91x71x1): Interpolated grid: dx=1.000 mm, dy=1.000 mm

Maximum value of SAR (interpolated) = 0.136 W/kg

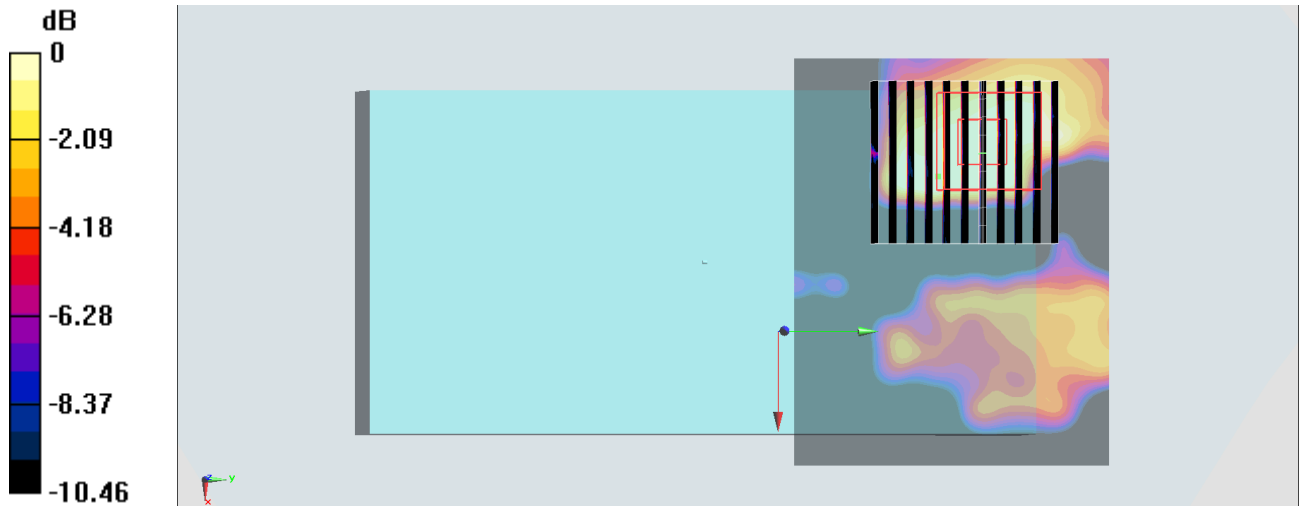
Zoom Scan (10x11x7)/Cube 0: Measurement grid: dx=4mm, dy=4mm, dz=1.4mm

Reference Value = 2.006 V/m; Power Drift = -0.04 dB

Peak SAR (extrapolated) = 0.169 W/kg

SAR(1 g) = 0.033 W/kg; SAR(10 g) = 0.012 W/kg

Maximum value of SAR (measured) = 0.0824 W/kg



0 dB = 0.0824 W/kg = -10.84 dBW/kg

#07_WLAN5GHz_802.11a 6Mbps_Back_0mm_Ch140;Soft Holster

Communication System: 802.11a; Frequency: 5700 MHz; Duty Cycle: 1:1.020

Medium: MSL_5G_170803 Medium parameters used: $f = 5700$ MHz; $\sigma = 6.044$ S/m; $\epsilon_r = 46.716$; $\rho = 1000$ kg/m³

Ambient Temperature : 23.6 °C ; Liquid Temperature : 22.6 °C

DASY5 Configuration:

- Probe: EX3DV4 - SN3925; ConvF(4.17, 4.17, 4.17); Calibrated: 2017/5/24;
- Sensor-Surface: 1.4mm (Mechanical Surface Detection)
- Electronics: DAE3 Sn495; Calibrated: 2017/5/22
- Phantom: SAM_Left; Type: QD000P40CD; Serial: TP:1815
- Measurement SW: DASY52, Version 52.8 (8); SEMCAD X Version 14.6.10 (7373)

Area Scan (91x71x1): Interpolated grid: dx=1.000 mm, dy=1.000 mm

Maximum value of SAR (interpolated) = 0.153 W/kg

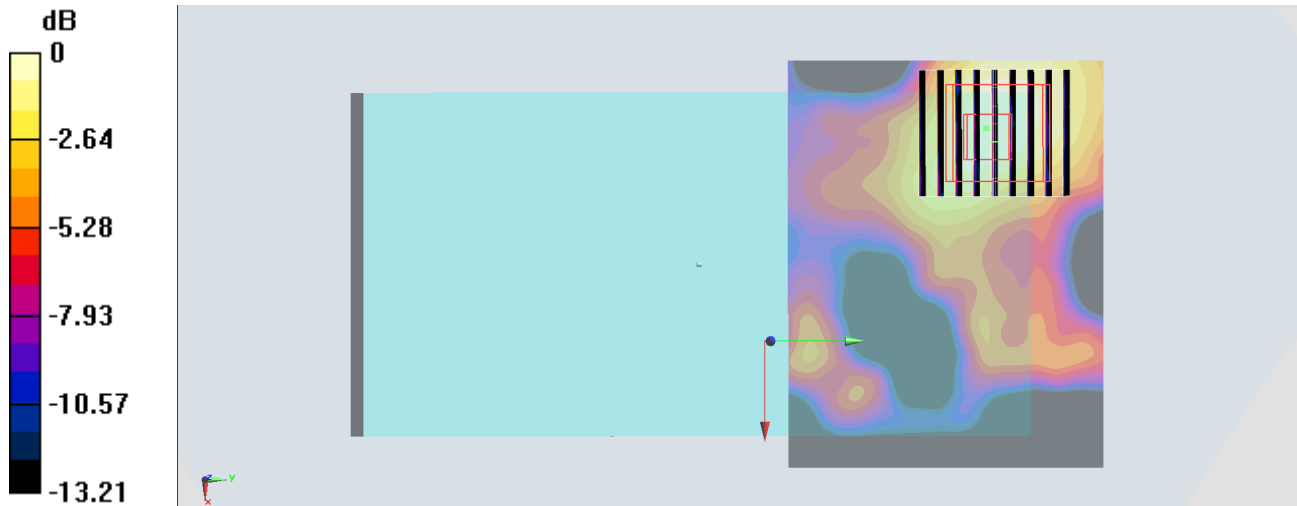
Zoom Scan (8x9x7)/Cube 0: Measurement grid: dx=4mm, dy=4mm, dz=1.4mm

Reference Value = 1.474 V/m; Power Drift = 0.00 dB

Peak SAR (extrapolated) = 0.240 W/kg

SAR(1 g) = 0.059 W/kg; SAR(10 g) = 0.023 W/kg

Maximum value of SAR (measured) = 0.155 W/kg



0 dB = 0.155 W/kg = -8.10 dBW/kg

#08_WLAN5GHz_802.11n-HT20 MCS0_Back_0mm_Ch149;Soft Holster

Communication System: 802.11n; Frequency: 5745 MHz; Duty Cycle: 1:1.020

Medium: MSL_5G_170803 Medium parameters used: $f = 5745$ MHz; $\sigma = 6.095$ S/m; $\epsilon_r = 46.628$; $\rho = 1000$ kg/m³

Ambient Temperature : 23.6 °C ; Liquid Temperature : 22.6 °C

DASY5 Configuration:

- Probe: EX3DV4 - SN3925; ConvF(4.14, 4.14, 4.14); Calibrated: 2017/5/24;
- Sensor-Surface: 1.4mm (Mechanical Surface Detection)
- Electronics: DAE3 Sn495; Calibrated: 2017/5/22
- Phantom: SAM_Left; Type: QD000P40CD; Serial: TP:1815
- Measurement SW: DASY52, Version 52.8 (8); SEMCAD X Version 14.6.10 (7373)

Area Scan (91x71x1): Interpolated grid: dx=1.000 mm, dy=1.000 mm

Maximum value of SAR (interpolated) = 0.238 W/kg

Zoom Scan (8x8x7)/Cube 0: Measurement grid: dx=4mm, dy=4mm, dz=1.4mm

Reference Value = 2.290 V/m; Power Drift = -0.10 dB

Peak SAR (extrapolated) = 0.294 W/kg

SAR(1 g) = 0.086 W/kg; SAR(10 g) = 0.034 W/kg

Maximum value of SAR (measured) = 0.233 W/kg

