

Measurement Report for Device

Device Under Test Properties

Model, Manufacturer	Dimensions [mm]	Software Version	DUT Type
Device,	100.0 x 100.0 x 172.0	3.2.0.1840	5G Verification Source

Exposure Conditions

Phantom Section	Position, Test Distance [mm]	Frequency [MHz]	Conversion Factor
5G	FRONT, 10.00	10000.0	1.0

Hardware Setup

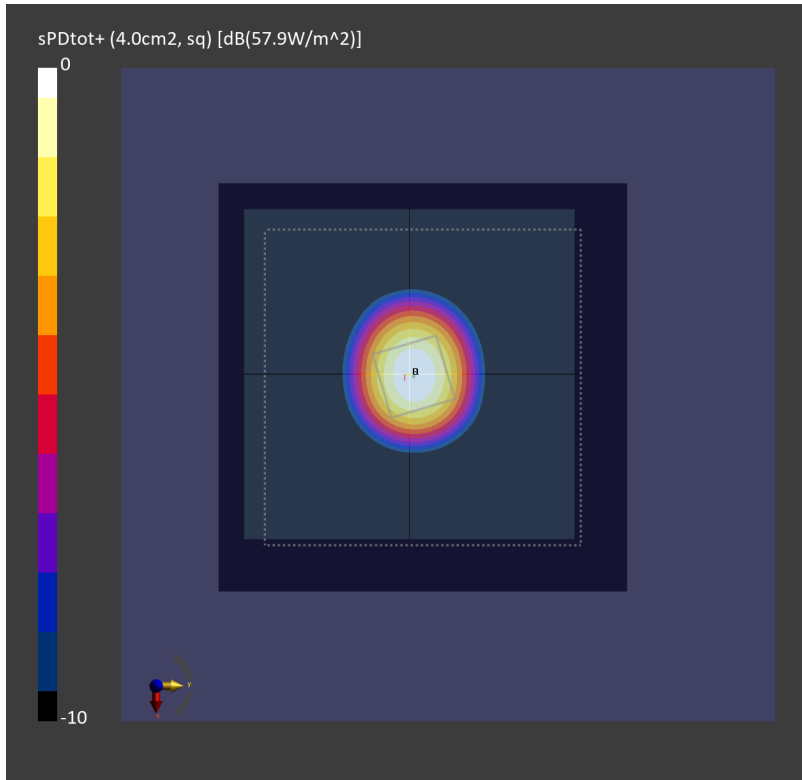
Phantom	Medium	Probe, Calibration Date	DAE, Calibration Date
mmWave - 1044	Air -	EUmmWV4 - SN9461_F1-55GHz, 2023-10-12	DAE4 Sn854, 2023-08-17

Scans Setup

Scan Type	5G Scan
Grid Extents [mm]	120.0 x 120.0
Grid Steps [lambda]	0.25 x 0.25
Sensor Surface [mm]	10.0

Measurement Results

Date	2024-05-15
Avg. Area [cm ²]	4.00
psPDn+ [W/m ²]	57.6
psPDtot+ [W/m ²]	57.9
H _{max} [A/m]	0.416
E _{max} [V/m]	159
max _(Stot) [W/m ²]	65.4
Power Drift [dB]	0.00



Measurement Report for Device

Device Under Test Properties

Model, Manufacturer	Dimensions [mm]	Software Version	DUT Type
Device,	100.0 x 100.0 x 172.0	3.2.0.1840	5G Verification Source

Exposure Conditions

Phantom Section	Position, Test Distance [mm]	Frequency [MHz]	Conversion Factor
5G	FRONT, 10.00	10000.0	1.0

Hardware Setup

Phantom	Medium	Probe, Calibration Date	DAE, Calibration Date
mmWave - 1044	Air -	EUmmWV3 - SN9424_F1-55GHz, 2024-03-12	DAE4ip Sn1823, 2023-07-31

Scans Setup

Scan Type	5G Scan
Grid Extents [mm]	120.0 x 120.0
Grid Steps [lambda]	0.25 x 0.25
Sensor Surface [mm]	10.0

Measurement Results

Date	2024-05-27
Avg. Area [cm ²]	4.00
psPDn+ [W/m ²]	59.6
psPDtot+ [W/m ²]	59.8
H _{max} [A/m]	0.420
E _{max} [V/m]	160
max _(Stot) [W/m ²]	66.0
Power Drift [dB]	-0.02

