

**#01\_WLAN2.4GHz\_802.11b 1Mbps\_Back\_0mm\_Ch11;Ant 2**

Communication System: 802.11b; Frequency: 2462 MHz; Duty Cycle: 1:1.007

Medium: MSL\_2450\_170907 Medium parameters used:  $f = 2462$  MHz;  $\sigma = 1.913$  S/m;  $\epsilon_r = 54.17$ ;  $\rho = 1000$  kg/m<sup>3</sup>

Ambient Temperature : 23.2 °C ; Liquid Temperature : 22.2 °C

DASY5 Configuration:

- Probe: EX3DV4 - SN3925; ConvF(7.94, 7.94, 7.94); Calibrated: 2017/5/24;
- Sensor-Surface: 1.4mm (Mechanical Surface Detection)
- Electronics: DAE3 Sn495; Calibrated: 2017/5/22
- Phantom: SAM\_Left; Type: QD000P40CD; Serial: TP:1815
- Measurement SW: DASY52, Version 52.8 (8); SEMCAD X Version 14.6.10 (7373)

**Area Scan (61x71x1):** Interpolated grid: dx=1.200 mm, dy=1.200 mm

Maximum value of SAR (interpolated) = 0.776 W/kg

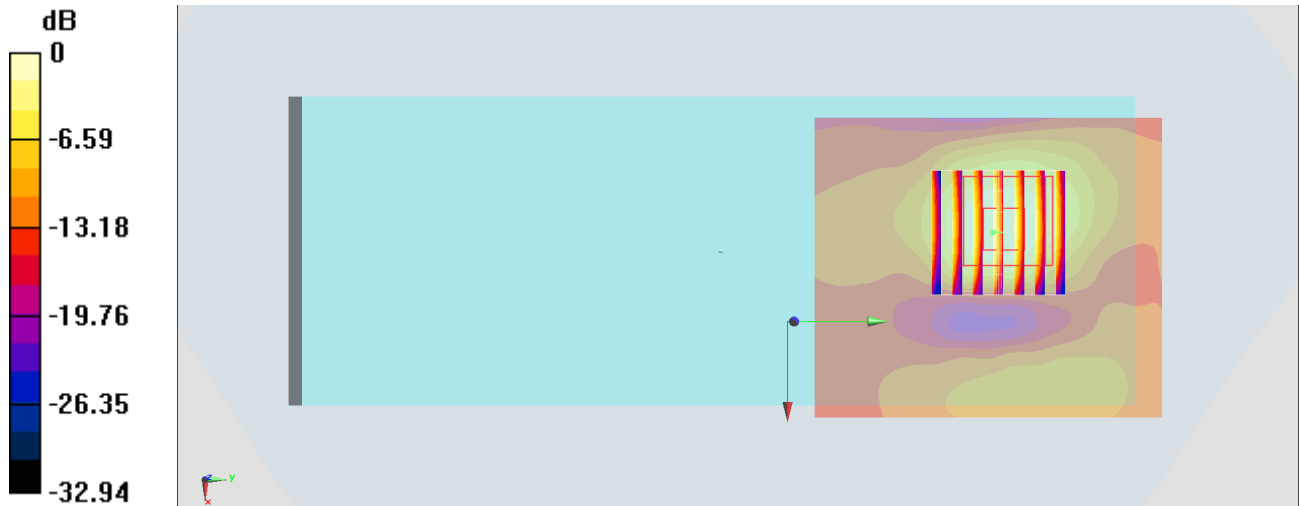
**Zoom Scan (7x7x7)/Cube 0:** Measurement grid: dx=5mm, dy=5mm, dz=5mm

Reference Value = 12.19 V/m; Power Drift = 0.13 dB

Peak SAR (extrapolated) = 0.709 W/kg

**SAR(1 g) = 0.391 W/kg; SAR(10 g) = 0.175 W/kg**

Maximum value of SAR (measured) = 0.578 W/kg



0 dB = 0.578 W/kg = -2.38 dBW/kg

## #02\_WLAN5GHz\_802.11a 6Mbps\_Left Side\_0mm\_Ch60;Ant 2

Communication System: 802.11a; Frequency: 5300 MHz; Duty Cycle: 1:1.041

Medium: MSL\_5G\_170905 Medium parameters used:  $f = 5300$  MHz;  $\sigma = 5.55$  S/m;  $\epsilon_r = 47.749$ ;  $\rho = 1000$  kg/m<sup>3</sup>

Ambient Temperature : 23.5 °C ; Liquid Temperature : 22.5 °C

DASY5 Configuration:

- Probe: EX3DV4 - SN3925; ConvF(4.59, 4.59, 4.59); Calibrated: 2017/5/24;
- Sensor-Surface: 1.4mm (Mechanical Surface Detection)
- Electronics: DAE3 Sn495; Calibrated: 2017/5/22
- Phantom: SAM\_Left; Type: QD000P40CD; Serial: TP:1815
- Measurement SW: DASY52, Version 52.8 (8); SEMCAD X Version 14.6.10 (7373)

**Area Scan (71x101x1):** Interpolated grid: dx=1.000 mm, dy=1.000 mm

Maximum value of SAR (interpolated) = 1.05 W/kg

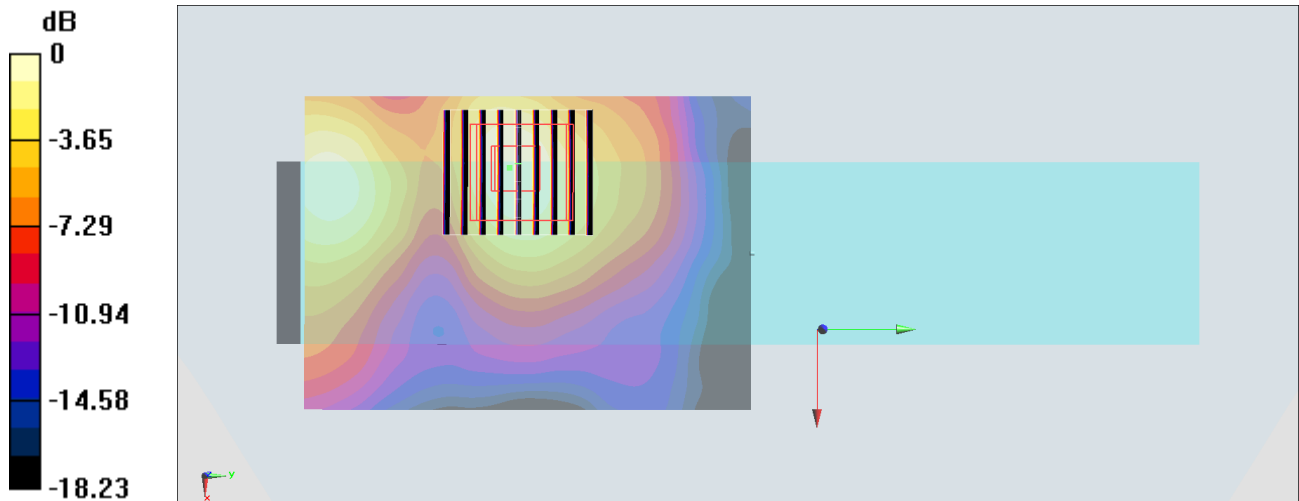
**Zoom Scan (8x9x7)/Cube 0:** Measurement grid: dx=4mm, dy=4mm, dz=1.4mm

Reference Value = 14.71 V/m; Power Drift = -0.01 dB

Peak SAR (extrapolated) = 1.64 W/kg

**SAR(1 g) = 0.472 W/kg; SAR(10 g) = 0.186 W/kg**

Maximum value of SAR (measured) = 1.03 W/kg



0 dB = 1.03 W/kg = 0.13 dBW/kg

**#03\_WLAN5GHz\_802.11a 6Mbps\_Left Side\_0mm\_Ch144;Ant 2**

Communication System: 802.11a; Frequency: 5720 MHz; Duty Cycle: 1:1.041

Medium: MSL\_5G\_170906 Medium parameters used:  $f = 5720$  MHz;  $\sigma = 6.139$  S/m;  $\epsilon_r = 46.136$ ;  $\rho = 1000$  kg/m<sup>3</sup>

Ambient Temperature : 23.6 °C ; Liquid Temperature : 22.6 °C

DASY5 Configuration:

- Probe: EX3DV4 - SN3925; ConvF(4.14, 4.14, 4.14); Calibrated: 2017/5/24;
- Sensor-Surface: 1.4mm (Mechanical Surface Detection)
- Electronics: DAE3 Sn495; Calibrated: 2017/5/22
- Phantom: SAM\_Left; Type: QD000P40CD; Serial: TP:1815
- Measurement SW: DASY52, Version 52.8 (8); SEMCAD X Version 14.6.10 (7373)

**Area Scan (71x101x1):** Interpolated grid:  $dx=1.000$  mm,  $dy=1.000$  mm

Maximum value of SAR (interpolated) = 1.24 W/kg

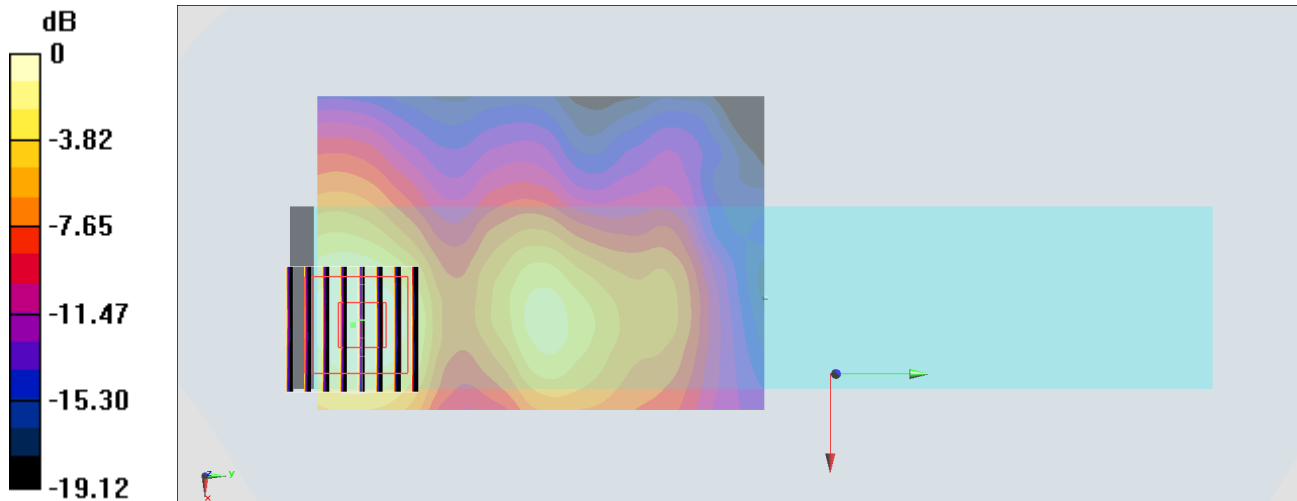
**Zoom Scan (8x8x7)/Cube 0:** Measurement grid:  $dx=4$ mm,  $dy=4$ mm,  $dz=1.4$ mm

Reference Value = 15.33 V/m; Power Drift = -0.17 dB

Peak SAR (extrapolated) = 1.95 W/kg

**SAR(1 g) = 0.541 W/kg; SAR(10 g) = 0.222 W/kg**

Maximum value of SAR (measured) = 1.22 W/kg



0 dB = 1.22 W/kg = 0.86 dBW/kg

**#04\_WLAN5GHz\_802.11a 6Mbps\_Left Side\_0mm\_Ch157;Ant 2**

Communication System: 802.11a; Frequency: 5785 MHz; Duty Cycle: 1:1.041

Medium: MSL\_5G\_170907 Medium parameters used:  $f = 5785$  MHz;  $\sigma = 6.215$  S/m;  $\epsilon_r = 46.121$ ;  $\rho = 1000$  kg/m<sup>3</sup>

Ambient Temperature : 23.4 °C ; Liquid Temperature : 22.4 °C

DASY5 Configuration:

- Probe: EX3DV4 - SN3925; ConvF(4.14, 4.14, 4.14); Calibrated: 2017/5/24;
- Sensor-Surface: 1.4mm (Mechanical Surface Detection)
- Electronics: DAE3 Sn495; Calibrated: 2017/5/22
- Phantom: SAM\_Left; Type: QD000P40CD; Serial: TP:1815
- Measurement SW: DASY52, Version 52.8 (8); SEMCAD X Version 14.6.10 (7373)

**Area Scan (71x101x1):** Interpolated grid: dx=1.000 mm, dy=1.000 mm

Maximum value of SAR (interpolated) = 1.07 W/kg

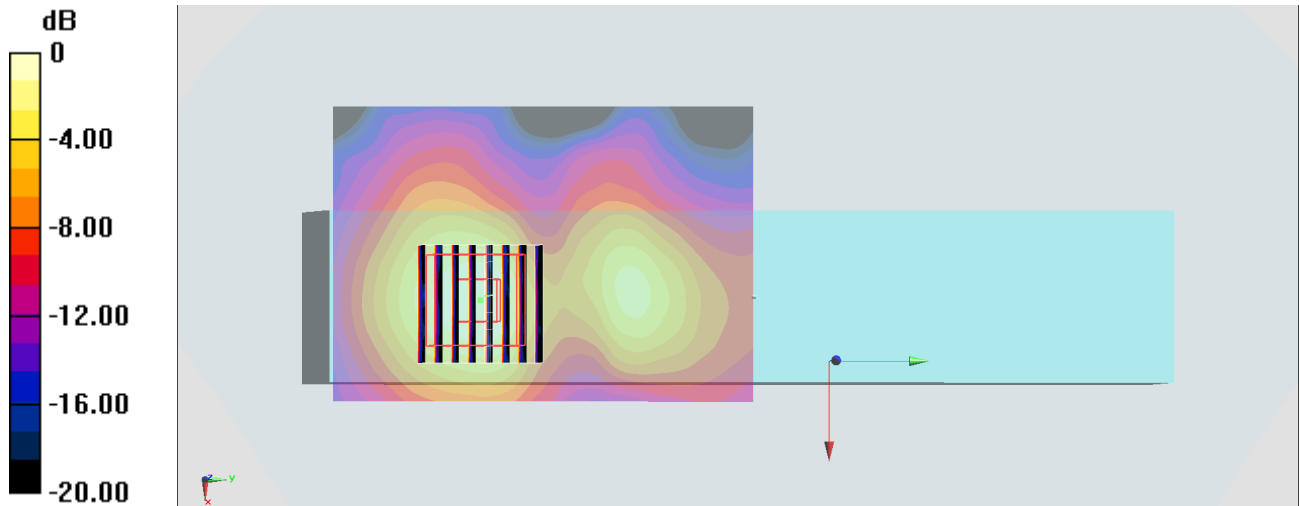
**Zoom Scan (8x8x7)/Cube 0:** Measurement grid: dx=4mm, dy=4mm, dz=1.4mm

Reference Value = 9.223 V/m; Power Drift = -0.11 dB

Peak SAR (extrapolated) = 1.64 W/kg

**SAR(1 g) = 0.426 W/kg; SAR(10 g) = 0.162 W/kg**

Maximum value of SAR (measured) = 0.982 W/kg



0 dB = 0.982 W/kg = -0.08 dBW/kg

**#05\_WLAN2.4GHz\_802.11b 1Mbps\_Back\_0mm\_Ch11;Ant 2**

Communication System: 802.11b; Frequency: 2462 MHz; Duty Cycle: 1:1.007

Medium: MSL\_2450\_170907 Medium parameters used:  $f = 2462$  MHz;  $\sigma = 1.913$  S/m;  $\epsilon_r = 54.17$ ;  $\rho = 1000$  kg/m<sup>3</sup>

Ambient Temperature : 23.2 °C ; Liquid Temperature : 22.2 °C

DASY5 Configuration:

- Probe: EX3DV4 - SN3925; ConvF(7.94, 7.94, 7.94); Calibrated: 2017/5/24;
- Sensor-Surface: 1.4mm (Mechanical Surface Detection)
- Electronics: DAE3 Sn495; Calibrated: 2017/5/22
- Phantom: SAM\_Left; Type: QD000P40CD; Serial: TP:1815
- Measurement SW: DASY52, Version 52.8 (8); SEMCAD X Version 14.6.10 (7373)

**Area Scan (61x71x1):** Interpolated grid: dx=1.200 mm, dy=1.200 mm

Maximum value of SAR (interpolated) = 0.498 W/kg

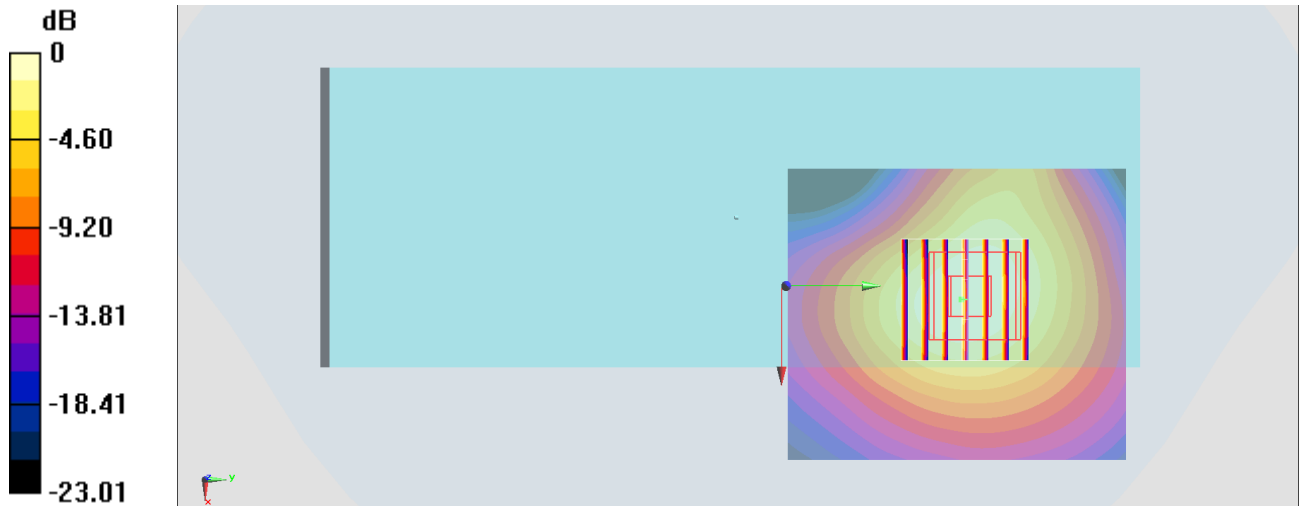
**Zoom Scan (7x7x7)/Cube 0:** Measurement grid: dx=5mm, dy=5mm, dz=5mm

Reference Value = 16.04 V/m; Power Drift = -0.03 dB

Peak SAR (extrapolated) = 0.574 W/kg

**SAR(1 g) = 0.313 W/kg; SAR(10 g) = 0.166 W/kg**

Maximum value of SAR (measured) = 0.472 W/kg



0 dB = 0.472 W/kg = -3.26 dBW/kg

**#06\_WLAN5GHz\_802.11a\_6Mbps\_Back\_0mm\_Ch60;Ant 2**

Communication System: 802.11a; Frequency: 5300 MHz; Duty Cycle: 1:1.041

Medium: MSL\_5G\_170905 Medium parameters used:  $f = 5300$  MHz;  $\sigma = 5.55$  S/m;  $\epsilon_r = 47.749$ ;  $\rho = 1000$  kg/m<sup>3</sup>

Ambient Temperature : 23.5 °C ; Liquid Temperature : 22.5 °C

DASY5 Configuration:

- Probe: EX3DV4 - SN3925; ConvF(4.59, 4.59, 4.59); Calibrated: 2017/5/24;
- Sensor-Surface: 1.4mm (Mechanical Surface Detection)
- Electronics: DAE3 Sn495; Calibrated: 2017/5/22
- Phantom: SAM\_Left; Type: QD000P40CD; Serial: TP:1815
- Measurement SW: DASY52, Version 52.8 (8); SEMCAD X Version 14.6.10 (7373)

**Area Scan (81x71x1):** Interpolated grid: dx=1.000 mm, dy=1.000 mm

Maximum value of SAR (interpolated) = 1.38 W/kg

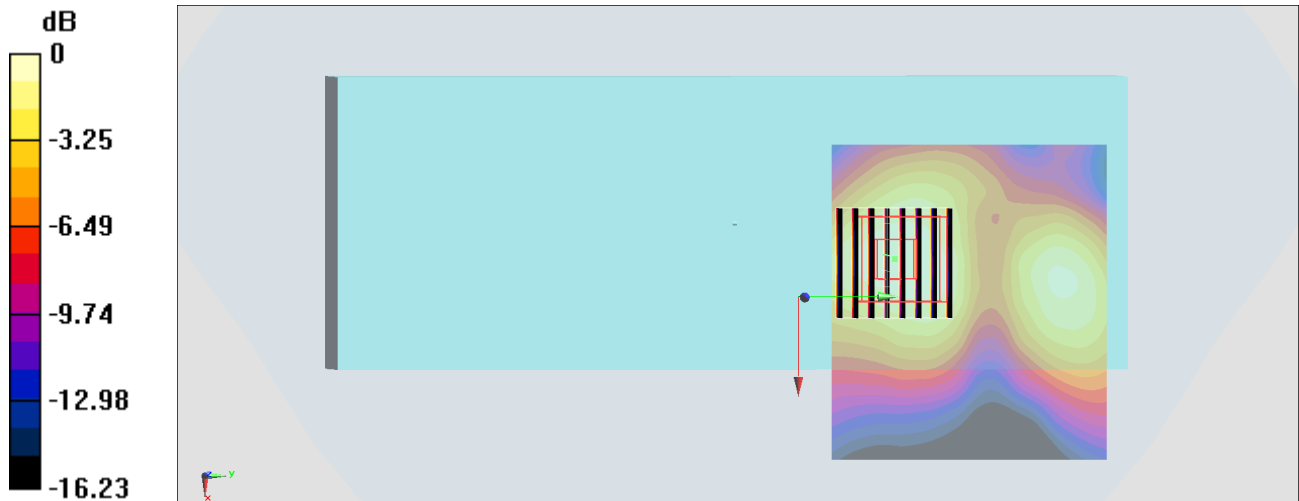
**Zoom Scan (8x8x7)/Cube 0:** Measurement grid: dx=4mm, dy=4mm, dz=1.4mm

Reference Value = 13.12 V/m; Power Drift = -0.11 dB

Peak SAR (extrapolated) = 2.26 W/kg

**SAR(1 g) = 0.676 W/kg; SAR(10 g) = 0.305 W/kg**

Maximum value of SAR (measured) = 1.38 W/kg



0 dB = 1.38 W/kg = 1.40 dBW/kg

**#07\_WLAN5GHz\_802.11a 6Mbps\_Back\_0mm\_Ch144;Ant 2**

Communication System: 802.11a; Frequency: 5720 MHz; Duty Cycle: 1:1.041

Medium: MSL\_5G\_170906 Medium parameters used:  $f = 5720$  MHz;  $\sigma = 6.139$  S/m;  $\epsilon_r = 46.136$ ;  $\rho = 1000$  kg/m<sup>3</sup>

Ambient Temperature : 23.6 °C ; Liquid Temperature : 22.6 °C

DASY5 Configuration:

- Probe: EX3DV4 - SN3925; ConvF(4.14, 4.14, 4.14); Calibrated: 2017/5/24;
- Sensor-Surface: 1.4mm (Mechanical Surface Detection)
- Electronics: DAE3 Sn495; Calibrated: 2017/5/22
- Phantom: SAM\_Left; Type: QD000P40CD; Serial: TP:1815
- Measurement SW: DASY52, Version 52.8 (8); SEMCAD X Version 14.6.10 (7373)

**Area Scan (81x71x1):** Interpolated grid: dx=1.000 mm, dy=1.000 mm

Maximum value of SAR (interpolated) = 2.89 W/kg

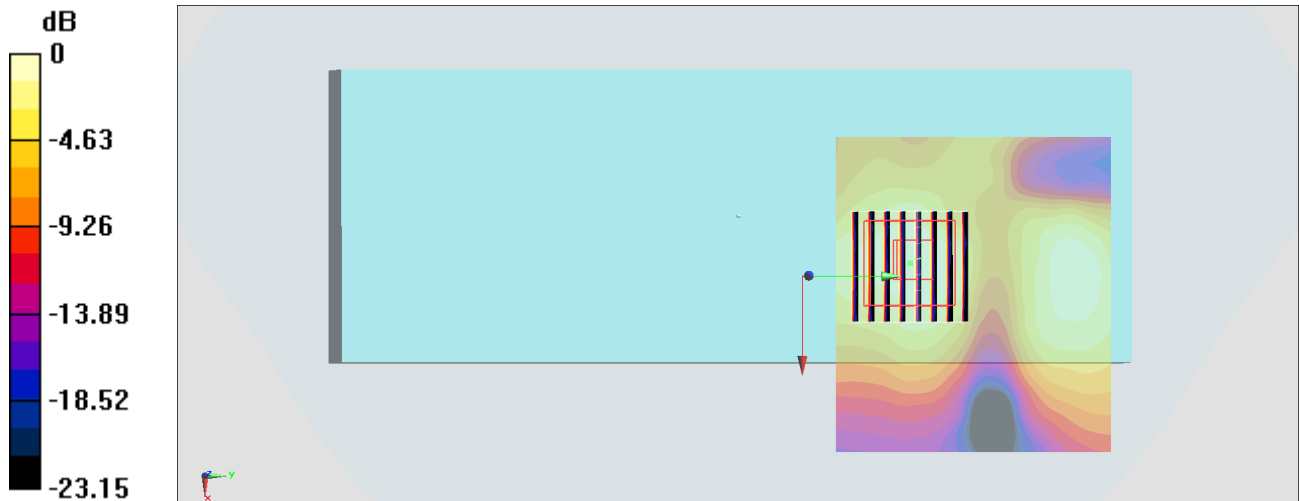
**Zoom Scan (8x8x7)/Cube 0:** Measurement grid: dx=4mm, dy=4mm, dz=1.4mm

Reference Value = 18.23 V/m; Power Drift = -0.11 dB

Peak SAR (extrapolated) = 3.46 W/kg

**SAR(1 g) = 1.297 W/kg; SAR(10 g) = 0.387 W/kg**

Maximum value of SAR (measured) = 1.92 W/kg



0 dB = 1.92 W/kg = 3.07 dBW/kg

**#08\_WLAN5GHz\_802.11a\_6Mbps\_Back\_0mm\_Ch157;Ant 2**

Communication System: 802.11a; Frequency: 5785 MHz; Duty Cycle: 1:1.041

Medium: MSL\_5G\_170907 Medium parameters used:  $f = 5785$  MHz;  $\sigma = 6.215$  S/m;  $\epsilon_r = 46.121$ ;  $\rho = 1000$  kg/m<sup>3</sup>

Ambient Temperature : 23.4 °C; Liquid Temperature : 22.4 °C

DASY5 Configuration:

- Probe: EX3DV4 - SN3925; ConvF(4.14, 4.14, 4.14); Calibrated: 2017/5/24;
- Sensor-Surface: 1.4mm (Mechanical Surface Detection)
- Electronics: DAE3 Sn495; Calibrated: 2017/5/22
- Phantom: SAM\_Left; Type: QD000P40CD; Serial: TP:1815
- Measurement SW: DASY52, Version 52.8 (8); SEMCAD X Version 14.6.10 (7373)

**Area Scan (81x71x1):** Interpolated grid: dx=1.000 mm, dy=1.000 mm

Maximum value of SAR (interpolated) = 0.953 W/kg

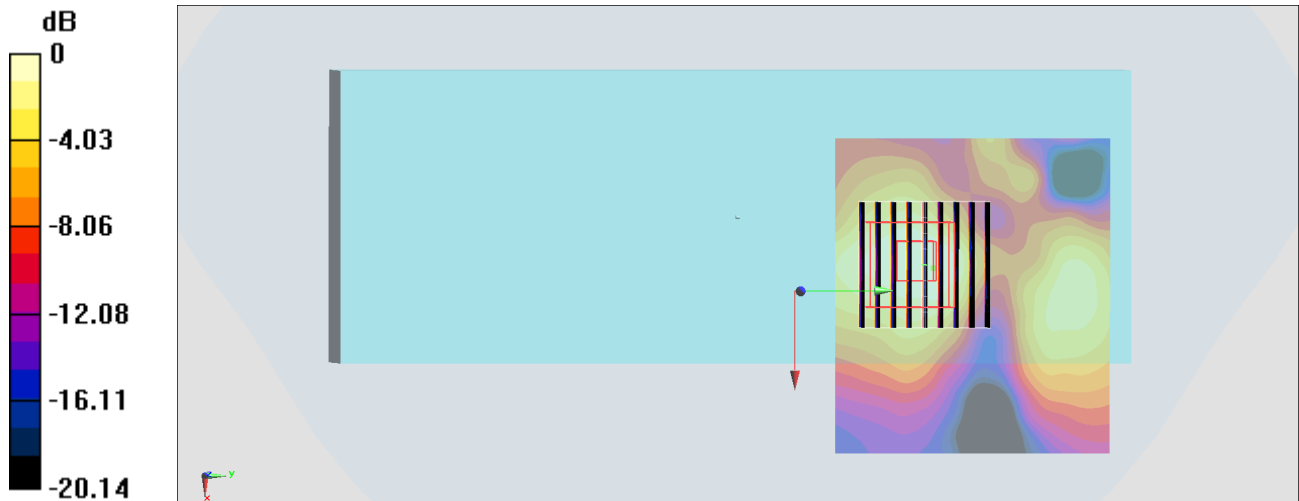
**Zoom Scan (9x9x7)/Cube 0:** Measurement grid: dx=4mm, dy=4mm, dz=1.4mm

Reference Value = 9.554 V/m; Power Drift = -0.13 dB

Peak SAR (extrapolated) = 1.38 W/kg

**SAR(1 g) = 0.677 W/kg; SAR(10 g) = 0.281 W/kg**

Maximum value of SAR (measured) = 0.878 W/kg



0 dB = 0.878 W/kg = -0.57 dBW/kg