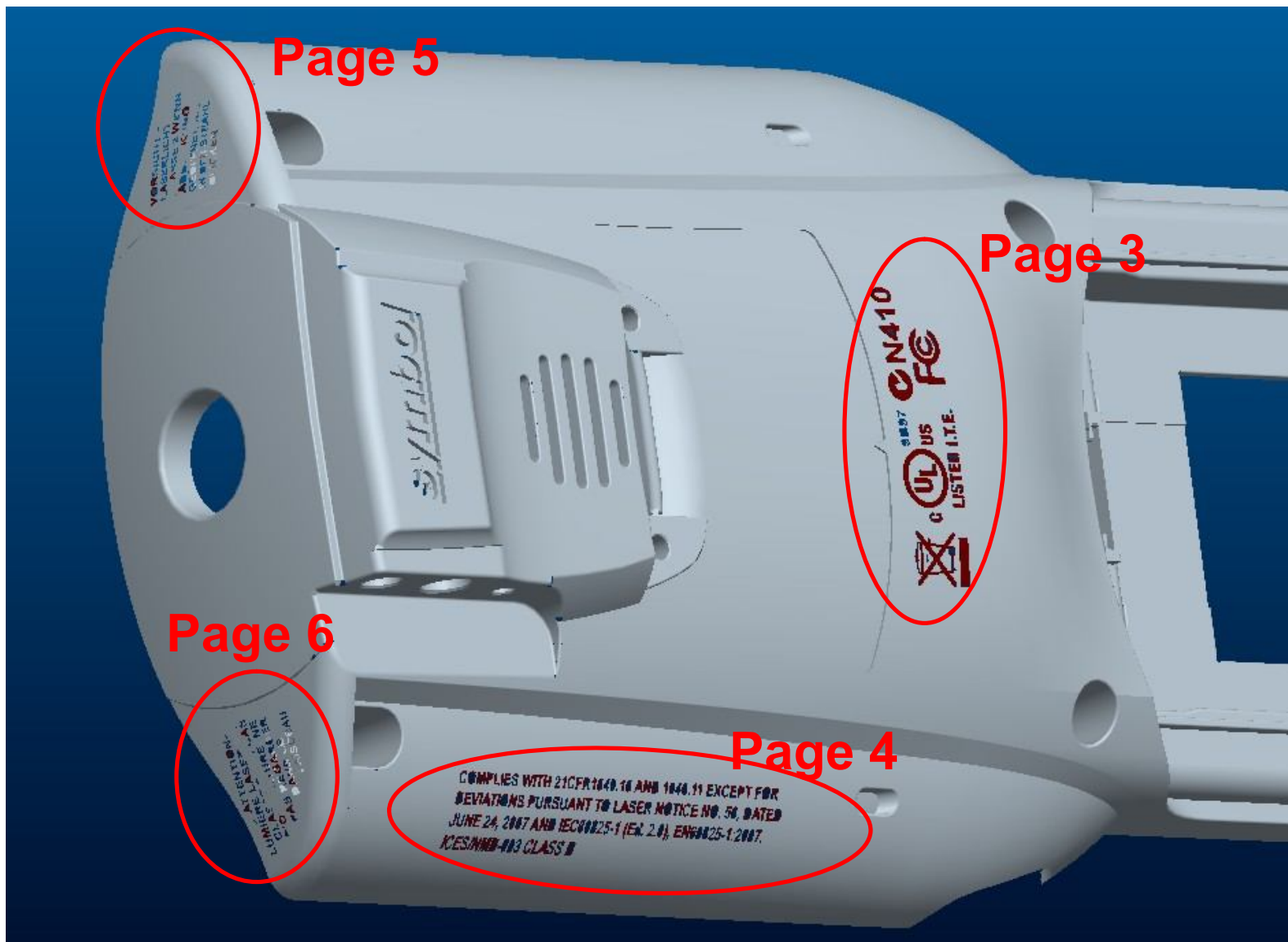


Engrave Mold Text

Date: 2009/08/12

Prepared by: YK Wang

Rotate



Rotate



Rotate

**COMPLIES WITH 21CFR1040.10 AND 1040.11 EXCEPT FOR
DEVIATIONS PURSUANT TO LASER NOTICE NO. 50, DATED
JUNE 24, 2007 AND IEC60825-1 (Ed. 2.0), EN60825-1:2007.
ICES/NMB-003 CLASS B**

Rotate

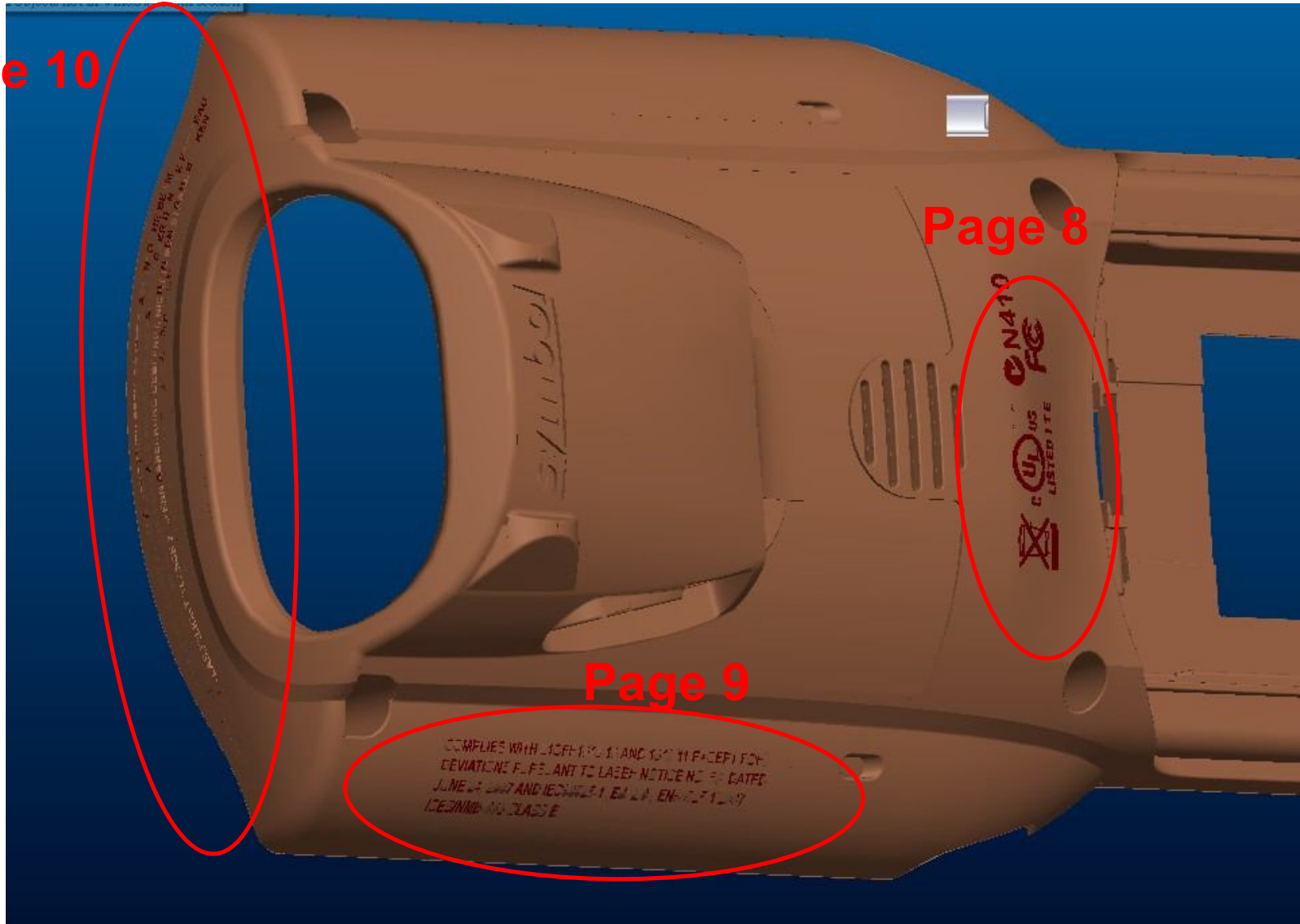
**VORSICHT -
LASERLICHT
KLASSE 2 WENN
ABDECKUNG
GEÖFFNET. NICHT
IN DEN STRAHL
BLICKEN**

Rotate



Straight

Page 10



Page 8

Page 9

COMPLIES WITH IEC60825-1 AND IEC60825-2 FACE 1 FOR
DEVIATIONS PERMISSIBLE TO LASER NOTICE NO. 10 DATED
JUNE 24, 2007 AND TECHNIQUE 1, EN 60825-1:2007
CLASS 1

Straight



Straight

**COMPLIES WITH 21CFR1040.10 AND 1040.11 EXCEPT FOR
DEVIATIONS PURSUANT TO LASER NOTICE NO. 50, DATED
JUNE 24, 2007 AND IEC60825-1 (Ed. 2.0), EN60825-1:2007.
ICES/NMB-003 CLASS B**

Straight

