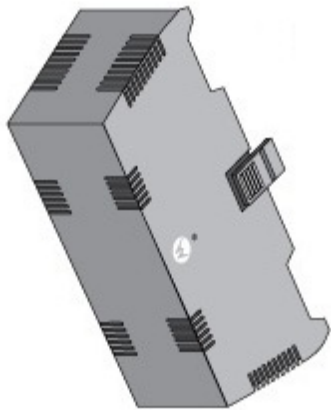


<http://www.motorolasolutions.com>

MOTOROLA SOLUTIONS INC.
1303 E. ALGONQUIN ROAD
SCHAUMBURG, IL 60196



Installation Guide

MOD-8132-6001S Internal Antenna Sensor Module



WARNING! Indicates a condition or procedure that could result in personal injury or equipment damage.



CAUTION Care is required. Disregarding a caution can result in data loss or equipment malfunction.



NOTE Tips, hints, or special requirements that you should take note of.

The following graphical alerts are used in this document to indicate notable situations:

Document Conventions
The following graphical alerts are used in this document to indicate notable situations:

Introduction

The MOD-8132-6001S sensor module is a USB sensor extension to the AP-8132

model access point for use with the Motorola Solutions ADSP platform. It provides wireless security sensing mechanisms, allowing monitoring and reporting within the AP-8132's radio coverage area. The output of the sensor's detection mechanisms are reported within the ADSP system.

Any changes or modifications to Motorola Solutions equipment, not expressly approved by Motorola Solutions, could void the user's authority to operate the equipment.

When Motorola Solutions devices are professionally installed, the Radio Frequency Output Power will not exceed the maximum allowable limit for the country of operation.

This device is only to be used with a Motorola Solutions AP-8132 Access Point.

Wireless Device Country Approvals

Regulatory markings, subject to certification, are applied to the device signifying the radio(s) is/are approved for use in the following countries: United States, Canada, Japan, China, S. Korea, Australia, and Europe (Note 1, 2).

Please refer to the *Declaration of Conformity (DoC)* for details of other country markings. This is available at <http://www.motorola.com/doc>.

Note 1: For 2.4GHz or 5GHz Products: Europe includes, Austria, Belgium, Bulgaria, Czech Republic, Cyprus, Denmark, Estonia, Finland, France, Germany, Greece, Hungary, Iceland, Ireland, Italy, Latvia, Liechtenstein, Lithuania, Luxembourg, Malta, Netherlands, Norway, Poland, Portugal, Romania, Slovak Republic, Slovenia, Spain, Sweden, Switzerland and the United Kingdom.

Note 2: Operation of the device without regulatory approval is illegal.

Country Selection

Select only the country in which you are using the device. Any other selection will make the operation of this device illegal.

Frequency of Operation - FCC and IC

5 GHz Only

The use in the UNII (Unlicensed National Information Infrastructure) band 1 (5150-5250 MHz) is restricted to Indoor Use Only; any other use will make the operation of this device illegal.

Industry Canada Statement

Caution: The device for the band 5150-5250 MHz is only for indoor usage to reduce potential for harmful interference to co-Channel mobile satellite systems. High power radars are allocated as primary users (meaning they have priority) of 5250-5350 MHz and 5650-5850 MHz and these radars could cause interference and/or damage to LE-LAN devices.

Avvertissement: Le dispositif fonctionnant dans la bande 5150-5250 MHz est réservé uniquement pour une utilisation à l'intérieur afin de réduire les risques de brouillage préjudiciable aux systèmes de satellites mobiles utilisant les mêmes canaux.

Les utilisateurs de radars de haute puissance sont désignés utilisateurs principaux (c.-à-d., qu'ils ont la priorité) pour les bandes 5250-5350 MHz et 5650-5850 MHz et que ces radars pourraient causer du brouillage et/ou des dommages aux dispositifs LAN-EL.

The MOD-8132-6001S sensor module is plenum rated.

Radio Technology 2x2 MIMO 802.11 a/b/g/n

Storage Temperature -20° to 80° celsius / -4° to 176° Fahrenheit

Operating Temperature 0° to 50° celsius / 35° to 122° Fahrenheit

Weight 0.270 lb / 0.123 kg

Height 1.625 in / 4.127 cm

Width 6.0 in / 15.24 cm

Length 2.5 in / 6.3 cm

Specifications

• Verify the environment has a continuous temperature range between 0° C to 50° C.

• Motorola Solutions recommends you do not to install the MOD-8132-6001S in wet or dusty areas.

• You are using one of the correctly rated power solutions for the AP-8132 access point:

- AP-PSB/AS-2P3-ATR power injector

- PWR5-14000-247R external power supply

• Before installing an MOD-8132-6001S sensor module, verify the following:

1. Read all installation instructions and site survey reports, and verify correct equipment installation before connecting the MOD-8132-6001S sensor module.

2. Remove jewelry and watches before installing this equipment.

3. Verify any device connected to this unit is properly wired and grounded.

4. Verify there is adequate ventilation around the device, and that ambient temperatures meet equipment operation specifications.

Precautions

1. Read all installation instructions and site survey reports, and verify correct equipment installation before connecting the MOD-8132-6001S sensor module.

2. Remove jewelry and watches before installing this equipment.

3. Verify any device connected to this unit is properly wired and grounded.

4. Verify there is adequate ventilation around the device, and that ambient temperatures meet equipment operation specifications.

Warnings

1. Read all installation instructions and site survey reports, and verify correct equipment installation before connecting the MOD-8132-6001S sensor module.

2. Remove jewelry and watches before installing this equipment.

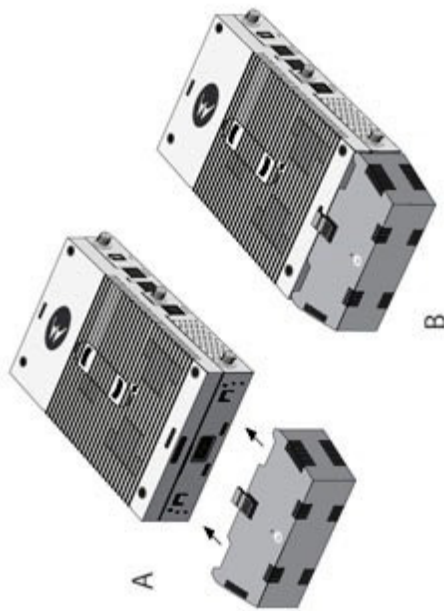
3. Verify any device connected to this unit is properly wired and grounded.

4. Verify there is adequate ventilation around the device, and that ambient temperatures meet equipment operation specifications.

5. Securely attach the sensor module to the Access Point.

6. Align the tabs on the sensor module with the corresponding tabs on the Access Point.

7. Securely attach the sensor module to the Access Point.



3. Confirm the sensor module is operational by observing its LEDs.

Regulatory Information

This device is approved under Motorola Solutions, Inc.

This guide applies to Model Number KHUS8600.

All Motorola devices are designed to be compliant with rules and regulations in locations where they are sold and will be labeled as required.

Local language translations are available at the following website:

<http://supportcentral.motorola.com>.

RF Exposure Guidelines

Safety Information

Reducing RF Exposure - Use Properly

Only operate the device in accordance with the instructions supplied.

International

The device complies with internationally recognized standards covering human exposure to electromagnetic fields from radio devices. For information on "International" human exposure to electromagnetic fields refer to the Motorola/Symbol *Declaration of Conformity (DoC)* at <http://www.motorola.com/doc>.

US and Canada

Co-located statement

To comply with FCC RF exposure compliance requirement, the antenna used for this transmitter must not be co-located or operating in conjunction with any other transmitter/antenna except those already approved in this filing.

Radiation Exposure Statement

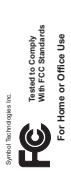
This equipment complies with IC radiation exposure limits set forth for an uncontrolled environment. This equipment should be installed and operated with minimum distance 30cm between the radiator and your body.

NOTE IMPORTANTE: (Pour l'utilisation de dispositifs mobiles)

Déclaration d'exposition aux radiations:

Cet équipement est conforme aux limites d'exposition aux rayonnements IC établies pour un environnement non contrôlé. Cet équipement doit être installé et utilisé avec un minimum de 30 cm de distance entre la source de rayonnement et votre corps.

Radio Frequency Interference Requirements - FCC



This equipment has been tested and found to comply with the limits for a Class B digital device, pursuant to Part 15 of the FCC rules. These limits are designed to provide reasonable protection against harmful interference in a residential installation. This equipment generates, uses and can radiate radio frequency energy and, if not installed and used in accordance with the instructions, may cause harmful interference to radio communications. However there is no guarantee that interference will not occur in a particular installation. If this equipment does cause harmful interference to radio or television reception, which can be determined by turning the equipment off and on, the user is encouraged to try to correct the interference by one or more of the following measures:

- Reorient or relocate the receiving antenna
- Increase the separation between the equipment and receiver
- Connect the equipment into an outlet on a circuit different from that to which the receiver is connected
- Consult the dealer or an experienced radio/TV technician for help.

Radio Transmitters (Part 15)

This device complies with Part 15 of the FCC Rules. Operation is subject to the following two conditions: (1) this device may not cause harmful interference, and (2) this device must accept any interference received, including interference that may cause undesired operation.

The use of 5 GHz WLAN's, for use in the US , have the following restrictions:

- Notched Band 5.60 - 5.65 GHz

Radio Frequency Interference Requirements - Canada

This Class B digital apparatus complies with Canadian ICES-003.

Cet appareil numérique de la classe B est conforme à la norme NMB-003 du Canada.

Radio Transmitters

For RLAN Devices:

The use of 5 GHz RLAN's, for use in Canada, have the following restrictions:

Ce dispositif est conforme à la norme CNR-210 d'Industrie Canada applicable aux appareils radio exempts de licence. Son fonctionnement est sujet aux deux conditions suivantes: (1) le dispositif ne doit pas produire de brouillage préjudiciable, et (2) ce dispositif doit accepter tout brouillage reçu, y compris un brouillage susceptible de provoquer un fonctionnement indésirable.

(7)

CE Marking and European Economic Area (EEA)

The use of 2.4GHz RLAN's, for use through the EEA, have the following restrictions:

- Maximum radiated transmit power of 100 mW EIRP in the frequency range 2.400 -2.4835 GHz.
- Italy requires a user license for outside usage.

Statement of Compliance

Motorola Solutions hereby declares that this device is in compliance with all the applicable Directives, 1999/5/EC. A Declaration of Conformity may be obtained from <http://www.motorola.com/doc>.

Japan (VCCI) - Voluntary Control Council for Interference

Class B,ITE

この装置は、情報処理技術者協会電波障害自主規制協議会（VCCI）の基準に基づくクラスB情報処理装置です。この装置は、家庭環境で使用することを目的としていますが、この装置がラジオやテレビジョン受信機に近接して使用されると、受信機障害を引き起こすことがあります。取扱説明書に従って正しい取組を扱いましょう。

Korea Warning Statement for Class B ITE

<p>사용자 안내 문 이 기기는 가정용(Ｂ급)전자파의 한계치로서 국 가장에서 사용하는 것을 목적으로 하며, 모든 지역에서 사용할 수 있습니다.</p>	<p>기 용 별 B급 기기 (가정용 방송통신기자재)</p>
---	--

Other Countries

Australia

Use of 5GHz RLAN's in Australia is restricted in the following band 5.50 – 5.65GHz.

Brazil

Declarações Regulamentares para AP-8132 - Brasil

Nota: A marca de certificação se aplica ao Transceptor, modelo AP-8132. Este equipamento opera em caráter secundário, isto é, não tem direito a proteção contra interferência prejudicial, mesmo de estações do mesmo tipo, e não pode causar interferência a sistemas operando em caráter primário. Para maiores informações sobre ANATEL consulte o site: www.anatel.gov.br.

Chile

Este equipo cumple con la Resolución No 403 de 2008, de la Subsecretaría de telecomunicaciones, relativa a radiaciones electromagnéticas.

China



Taiwan
私的電磁場器材電磁相容辦法
第十二條
經型式認證合格之私的電作場器材，業經許可、公告，再經或使用者均不得擅自變更設計之特色及功能。

私的電磁場器材之使用不得對無線電波及干擾台造成危害，經發現有干擾現象時，應立即停用，並改善至無干擾行為時方得重新使用。

私的電磁場器材應符合國家標準或工業、科學及醫療用電磁干擾限制標準之干擾。

在 2.4-2.4835 GHz 頻段內操作之無線電設備設備，限於室內使用。

Thailand

เครื่องโทรคมนาคมและอุปกรณ์นี้ มีความสอดคล้องตามข้อกำหนดของ กทท.

(9)



English: For EU Customers: All products at the end of their life must be returned to Motorola for recycling. For information on how to return product, please go to: <http://www.motorola.com/recycling/weee>.

Français: Clients de l'Union Européenne: Tous les produits en fin de cycle de vie doivent être retournés à Motorola pour recyclage. Pour de plus amples informations sur le retour de produits, consultez : <http://www.motorola.com/recycling/weee>.

Español: Para clientes en la Unión Europea: todos los productos deberán entregarse a Motorola al final de su ciclo de vida para que sean reciclados. Si desea más información sobre cómo devolver un producto, visite: <http://www.motorola.com/recycling/weee>.

Bulgarian: За клиенти от ЕС: След края на ползвания им живот всички продукти трябва да се връщат на Motorola за рециклиране. За информация относно връщането на продукти, моля отидете на адрес: <http://www.motorola.com/recycling/weee>.

Deutsch: Für Kunden innerhalb der EU: Alle Produkte müssen am Ende ihrer Lebensdauer zum Recycling an Motorola zurückgesandt werden. Informationen zur Rücksendung von Produkten finden Sie unter <http://www.motorola.com/recycling/weee>.

Italiano: per i clienti dell'UE: tutti i prodotti che sono giunti al termine del rispettivo ciclo di vita devono essere restituiti a Motorola al fine di consentirne il riciclaggio. Per informazioni sulle modalità di restituzione, visitare il seguente sito Web: <http://www.motorola.com/recycling/weee>.

Português: Para clientes da UE: todos os produtos no fim de vida devem ser devolvidos à Motorola para reciclagem. Para obter informações sobre como devolver o produto, visite: <http://www.motorola.com/recycling/weee>.

Netherlands: Voor klanten in de EU: alle producten dienen aan het einde van hun levensduur naar Motorola te worden teruggezonden voor recycling. Raadpleeg <http://www.motorola.com/recycling/weee> voor meer informatie over het terugzenden van producten.

(10)

Polski: Klienci z obszaru Unii Europejskiej: Produkty wycofane z eksploatacji należy zwrócić do firmy Motorola w celu ich utylizacji. Informacje na temat zwrotu produktów znajdują się na stronie internetowej <http://www.motorola.com/recycling/weee>.

Čeština: Pro zákazníky z EU: Všechny produkty je nutné po skončení jejich životnosti vrátit společnosti Motorola k recyklaci. Informace o způsobu vrácení produktu najdete na webové stránce: <http://www.motorola.com/recycling/weee>.

Eesti: EL Klientidele: kõik tooted tuleb nende eluea lõppedes tagastada taaskasutamise eesmärgil Motorola'ile. Lisainformatsiooni saamiseks toote tagastamise kohta külastage palun aadressi: <http://www.motorola.com/recycling/weee>.

Magyar: Az EU-ban vásárlóknak: Minden tömkrément terméket a Motorola vállalatához kell eljuttatni újrahasznosítás céljából. A termék visszajuttatásának módjával kapcsolatos tudnivalókrét látogasson el a <http://www.motorola.com/recycling/weee> weboldalra.

Svenska: För kunder inom EU: Alla produkter som uppnått sin livslängd måste returneras till Motorola för återvinning. Information om hur du returnerar produkten finns på <http://www.motorola.com/recycling/weee>.

Suomi: Asiakkait Euroopan unionin alueella: Kaikki tuotteet on palautettava kierrätettäväksi Motorola-yhtiöön, kun tuotetta ei enää käytetä. Lisätietoja tuotteen palauttamisesta on osoitteessa <http://www.motorola.com/recycling/weee>.

Dansk: Til kunder i EU: Alle produkter skal returneres til Motorola til recirkulering, når de er udtjent. Læs oplysningerne om returnering af produkter på: <http://www.motorola.com/recycling/weee>.

Ελληνικά: Για πελάτες στην Ε.Ε.: Όλα τα προϊόντα, στο τέλος της διάρκειας ζωής τους, πρέπει να επιστρέφονται στην Motorola για ανακύκλωση. Για περισσότερές πληροφορίες σχετικά με την επιστροφή ενός προϊόντος, επισκεφθείτε τη διεύθυνση <http://www.motorola.com/recycling/weee> στο Διαδίκτυο.

Malti: Għal klijenti fi-UE: il-prodotti kollha li jkunu wasli fi-aħħar tal-hajja ta' l-uzu tagħhom, jridu jiġu ritornati għand għar-rikkliġġ. Għal aktar taġrif dwar kif għandek ritorna l-prodott, jekk jogħġbok zur: <http://www.motorola.com/recycling/weee>.

Românesc: Pentru clienții din UE: Toate produsele, la sfârșitul duratei lor de funcționare, trebuie returnate la Motorola pentru reciclare. Pentru informații despre returnarea produsului, accesați: <http://www.motorola.com/recycling/weee>.

(11)

Motorola Solutions Support Center

If you have a problem with your equipment, contact support for your region.

Contact information is available at: <http://motorolasolutions.com/support>.

When contacting Motorola Solutions support, please provide the following information:

- Serial number of the unit
- Model number or product name
- Software type and version number

Motorola Solutions responds to calls by e-mail, telephone, or fax within the time limits set forth in support agreements. If you purchased your product from a Motorola Solutions business partner, contact that business partner for support.

Customer Support Web Sites

The Motorola Solutions Support Central Web site, located at:

<http://supportcentral.motorola.com/>

provides information and online assistance including developer tools, software downloads, product manuals and online repair requests.

Manuals

<http://supportcentral.motorola.com/support/product/manuals.do>

General Information

Obtain additional information by contacting Motorola Solutions at:

Telephone (North America): 1-800-722-6234

Telephone (International): +1-631-738-5200

Website: <http://www.motorolasolutions.com>

(14)