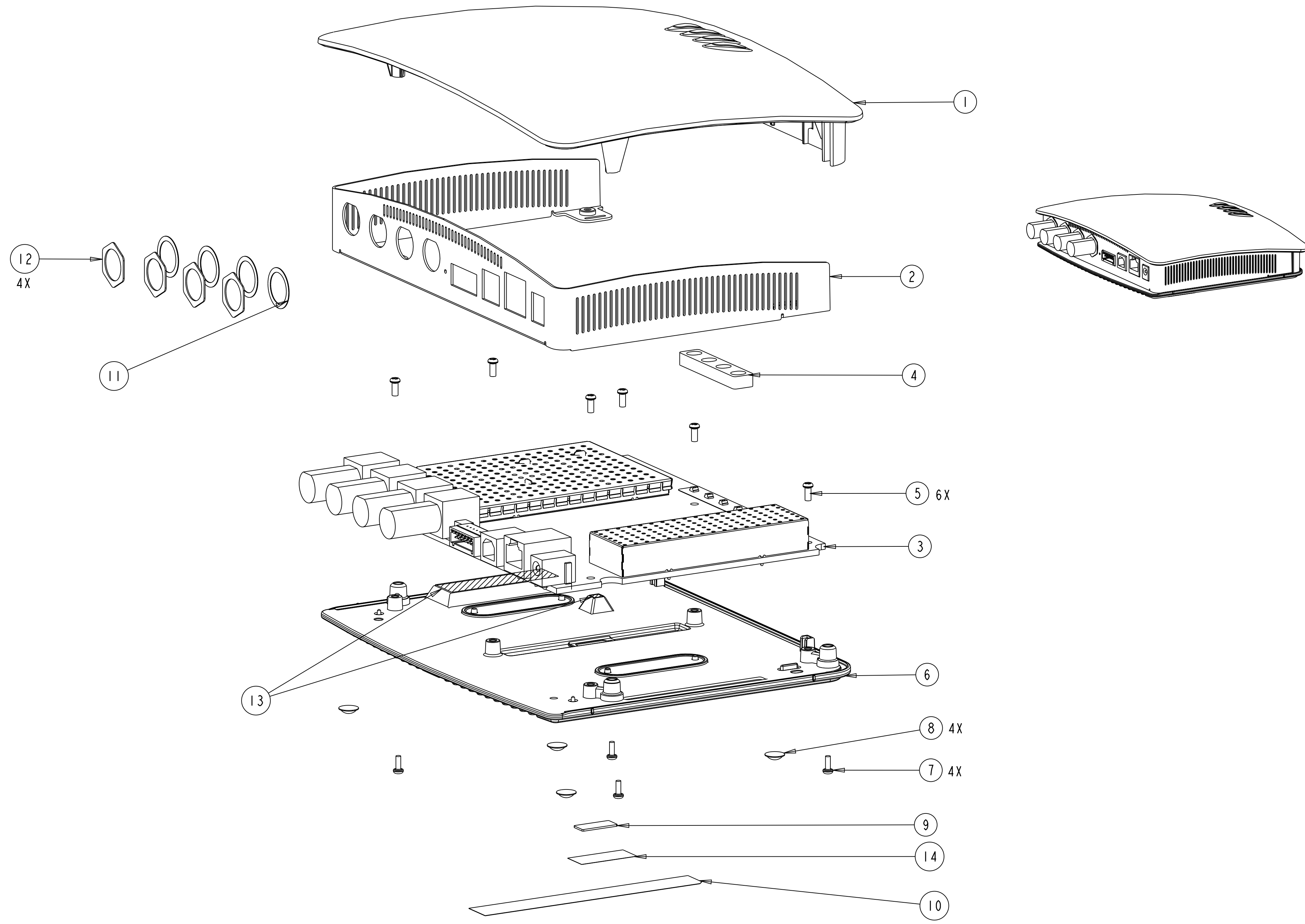


NOTES: UNLESS OTHERWISE SPECIFIED

1. TORQUE SPECIFICATION:  
 A. ITEM # 5 3.75±0.25 - LBF-IN  
 B. ITEM # 7 3.75±0.25 - LBF-IN  
 C. ITEM # 12 4.75±0.25 - LBF-IN
2. DISPENSE & APPLY ITEM 13 ON ITEM 6 AT SPECIFIED LOCATION
3. ASSEMBLY INSTRUCTIONS CLEAN HOUSING WITH A 50/50 MIXTURE OF ISOPROPYL ALCOHOL AND WATER PRIOR TO ADHERING LABEL.

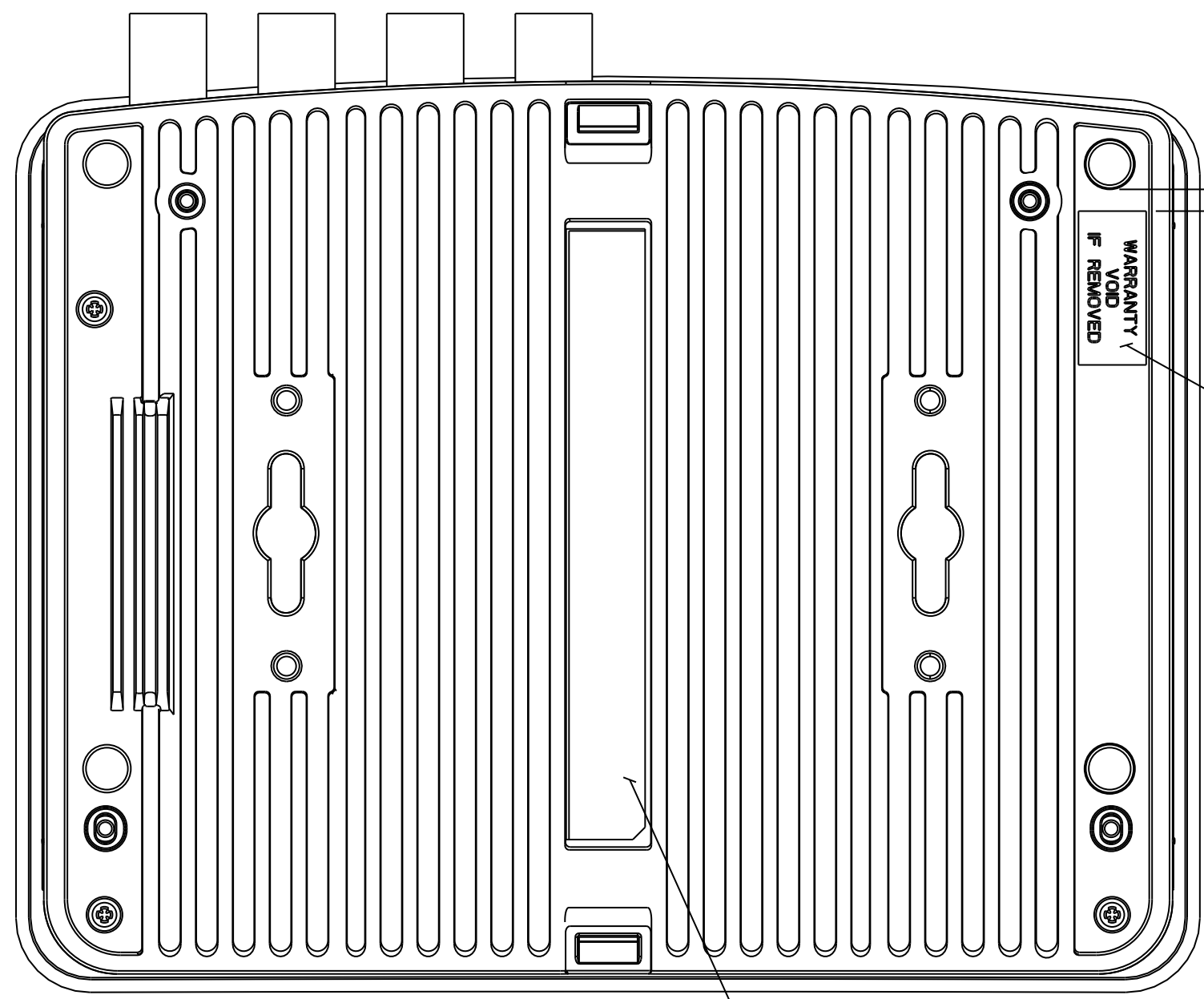
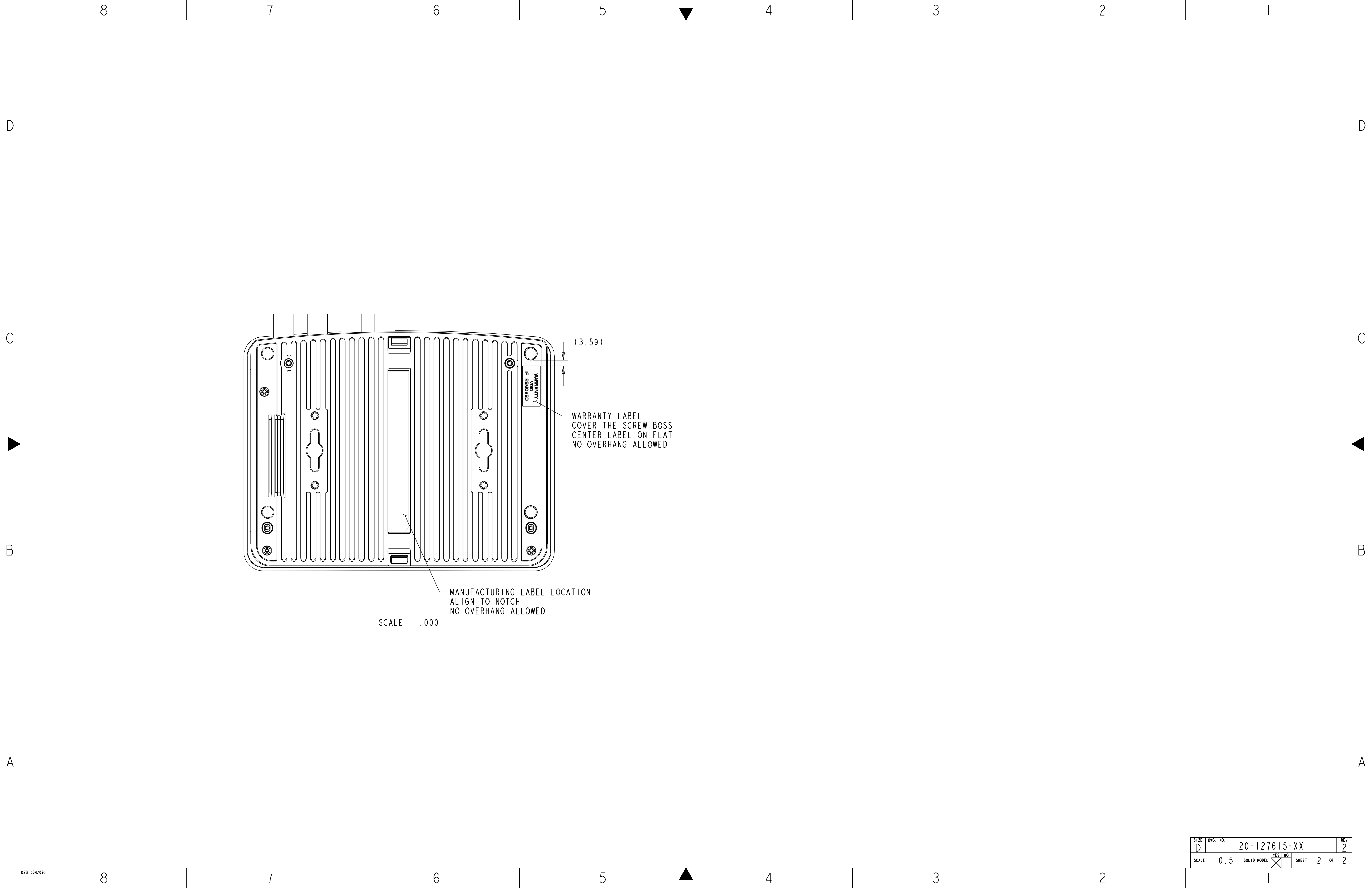
REVISIONS						
REV	ZONE	DESCRIPTION	E.C.	BY	APVD.	DATE
1		INITIAL RELEASE PER PPD - 109906		MO	IN	07/23/09
2		ADDED SHEET 2		MO	IN	08/11/09



SCALE 1.000

14	63-124381-01	LABEL: WARRANTY	1
13	50-11600-195	THERMAL GREASE	2
12	50-12800-1104	NUT: TNC CONNECTOR	4
11	50-12800-847	LOCK WASHER: TNC CONNECTOR	4
10	63-123281-XX	LABEL: MANUFACTURING	1
9	12-123021-XX	COVER: TEST POINT	1
8	50-12800-869	FEET: CLEAR BUMPON	4
7	50-12857-008B	SCREW: 3/4" FINAL ASSY	4
6	42-121600-XX	ASSY: BOTTOM PLATE	1
5	50-128863-013	SCREW: PCB/BOTTOM PLATE ASSY	6
4	42-125024-XX	BAFFLE: LIGHT PIPE	1
3	24-119432-01	FX7400 MAIN PCB	1
2	41-122083-XX	ASSY: I/O PANEL, 4 PORT	1
1	41-121599-XX	ASSY: TOP COVER	1
ITEM #	PART #	PART DESCRIPTION	QTY

* UNLESS OTHERWISE SPECIFIED * DIMENSIONS ARE IN MILLIMETERS DIMENSIONING AND TOLERANCING PER ASME Y14.5M-1994 UNTOLERANCED DIMENSIONS ARE BASIC 		APPROVALS DRAWN M QURESHI CHECKED I NARODITSKY ENGINEER I NARODITSKY ANALYST MFG. ENG. PRODUCT QUALITY	DATE 07/15/09 07/15/09 07/15/09	MOTOROLA INC. One Motorola Plaza Hightstown, NJ, 08520
ASSEMBLY: FX 7400				
MOTOROLA PROPRIETARY AND CONFIDENTIAL COPYRIGHT 2009 MOTOROLA INFORMATION CONTAINED ON ALL SHEETS OF THIS PRINT CANNOT BE REPRODUCED OR USED, IN WHOLE OR IN PART, WITHOUT MOTOROLA'S CONSENT. THIS NOTICE DOES NOT IMPLY PUBLICATION COMPUTER GENERATED DRAWING DO NOT SCALE		VIEWS SHOWN IN THIRD ANGLE PROJECTION	SIZE D DWG. NO. 20-127615-XX SCALE: 0.5 SOLID MODEL <input checked="" type="checkbox"/> YES <input type="checkbox"/> NO SHEET 1 OF 2	



(3.59)

WARRANTY LABEL  
COVER THE SCREW BOSS  
CENTER LABEL ON FLAT  
NO OVERHANG ALLOWED

MANUFACTURING LABEL LOCATION  
ALIGN TO NOTCH  
NO OVERHANG ALLOWED

SCALE 1.000

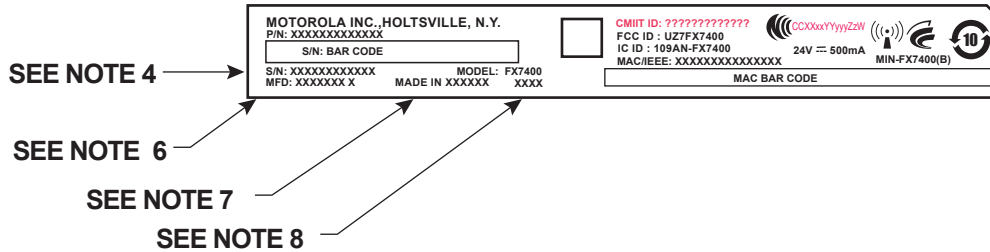
SIZE	DWG. NO.	REV
D	20-127615-XX	2
SCALE: 0.5	SOLID MODEL <input checked="" type="checkbox"/>	SHEET 2 OF 2

REVISIONS						
REV.	ZONE	△	DESCRIPTION	E.C.	BY	APVD. DATE
A	ALL		REL'D PER PPD		LJM	03/16/09

**PROD FAM: FX7400**  
**DESCRIPTION: LBL:LCD, FX7400**  
**CTRY CODE:NA**  
**COUNTRY: NA**  
**SN POOL: STANDARD**  
**LBL STOCK PN:63-123281-01 SEE NOTE 2**

**LBL SCRIPT : b328101X b=12 \*SEE NOTE 1**  
**CCG1: F555**


**NOTE:**  
**FOR ADDITIONAL REGULATORY**  
**INFORMATION SEE BOM P/N:**  
**60-123281-01**



# preliminary

**NOTES: UNLESS OTHERWISE SPECIFIED**

1. SCRIPT FILE (SHOWN IN RED) TO BE CREATED BY MANUFACTURING PER SP-10083-01  
SCRIPT FILE MUST MATCH THIS DOCUMENT EXACTLY AND HAVE SAME REVISION.
2. LABEL STOCK P/N IS SUBJECT TO CHANGE. CHECK BOM FOR ACTUAL PART NUMBER.
3. IN ALL CASES "XXX....." REPRESENTS VARIABLE FIELDS IN SCRIPT FILE.  
ACTUAL NUMBER OF CHARACTERS IN SCRIPT FILE MAY VARY.
4. SERIAL NUMBER MUST BE 4PT MINIMUM CHARACTER HEIGHT IN SCRIPT FILE.
5. PART NUMBER MAY OR MAY NOT HAVE DASH BEFORE COUNTRY CODE.  
SEE BOM FOR ACTUAL MODEL DESCRIPTION.
6. "MFD:" REPRESENTS MANUFACTURE DAY, MONTH, YEAR AND REVISION OF PART NUMBER(IE: 12SEP03 X)
7. COUNTRY OF ORIGIN REQUIRED
8. PLANT CODE REQUIRED. TO BE LOCATED BY MANUFACTURING FOR BEST FIT IN SCRIPT FILE.

 <b>MOTOROLA</b>			
<b>LBL:LCD, FX7400 (MERLIN)</b>			
SIZE A	DWG. NO.	<b>69-123281-01</b>	REV <b>1</b>
SCALE: 1 / 1	ILLUSTRATOR	X	SHEET 1 OF 1



Date: October 31<sup>st</sup> 2009

**Label – Part 15.19**

Model : **FX7400**  
FCC ID : **UZ7FX7400**

To whom it may concern:

The fixing of a label containing the required statement, given in Part 15.19, is not practical given the constraints of the design.

The design of the device requires slots and ribs in the case to expel the heat; this has meant the statement below is now placed in the Regulatory Guide.

Statement in the Regulatory Guide:

This device complies with part 15 of the FCC Rules. Operation is subject to the following two conditions: (1) This device may not cause harmful interference, and (2) this device must accept any interference received, including interference that may cause undesired operation.

If you have any questions, please don't hesitate to contact us.

Sincerely yours,

A handwritten signature in blue ink, appearing to read 'A.R. Parrish', is located below the 'Sincerely yours,' text.

---

**Alan Parrish**

Director, Regulatory

Motorola, Inc

TEL: +44(0)1256484304

Email:alan.parrish@motorola.com