

**Measurement Report for Device
Device Under Test Properties**

Model, Manufacturer	Dimensions [mm]	IMEI	DUT Type
Device,	70.0 x 50.0 x 8.0		5G Verification Source

Exposure Conditions

Phantom Section	Position, Test Distance [mm]	Frequency [MHz]	Conversion Factor
5G	FRONT, 10.00	10000.0	1.0

Hardware Setup

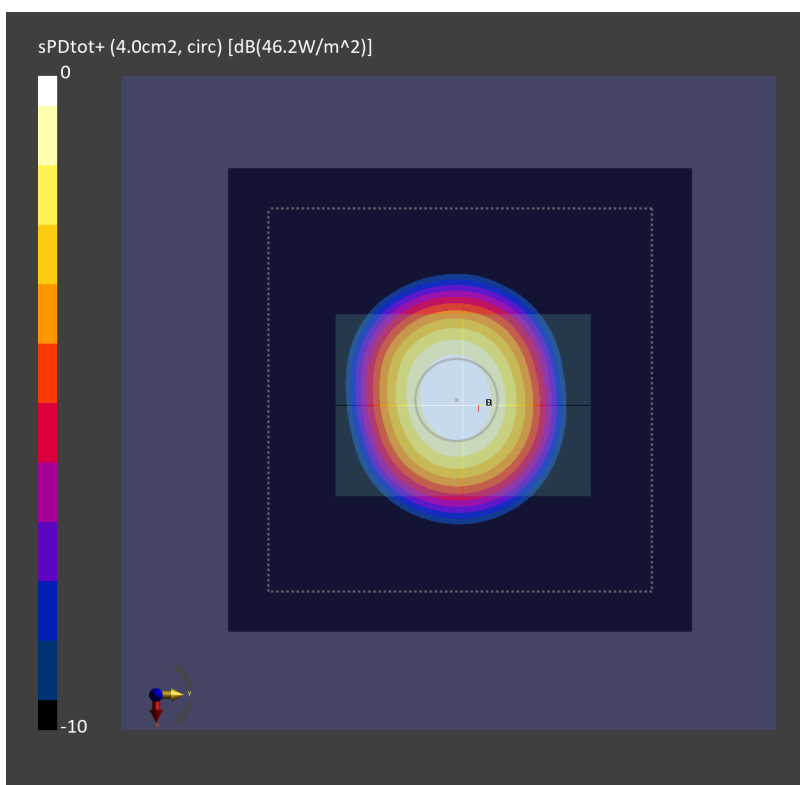
Phantom	Medium	Probe, Calibration Date	DAE, Calibration Date
mmWave - xxxx	Air -	EUmmWV4 - SN9441_F1-55GHz, 2022-11-18	DAE4 Sn853, 2022-07-20

Scans Setup

Scan Type	5G Scan
Grid Extents [mm]	120.0 x 120.0
Grid Steps [lambda]	0.25 x 0.25
Sensor Surface [mm]	10.0

Measurement Results

Date	2023-05-22, 01:07
Avg. Area [cm ²]	4.00
psPDn+ [W/m ²]	46.0
psPDtot+ [W/m ²]	46.2
H _{max} [A/m]	0.396
E _{max} [V/m]	141
max(S _{tot}) [W/m ²]	54.0
Power Drift [dB]	0.02



Measurement Report for Device

Device Under Test Properties

Model, Manufacturer	Dimensions [mm]	IMEI	DUT Type
Device,	70.0 x 50.0 x 8.0		5G Verification Source

Exposure Conditions

Phantom Section	Position, Test Distance [mm]	Frequency [MHz]	Conversion Factor
5G	FRONT, 10.00	10000.0	1.0

Hardware Setup

Phantom	Medium	Probe, Calibration Date	DAE, Calibration Date
mmWave - xxxx	Air -	EUmmWV3 - SN9441_F1-55GHz, 2022-11-18	DAE4 Sn854, 2022-08-24

Scans Setup

Scan Type	5G Scan
Grid Extents [mm]	120.0 x 120.0
Grid Steps [lambda]	0.25 x 0.25
Sensor Surface [mm]	10.0

Measurement Results

Date	2023-06-26, 03:46
Avg. Area [cm ²]	4.00
psPDn+ [W/m ²]	49.4
psPDtot+ [W/m ²]	49.5
H _{max} [A/m]	0.417
E _{max} [V/m]	145
max(Stot) [W/m ²]	58.3
Power Drift [dB]	0.08

