

## Measurement Report for Device Device Under Test Properties

Model, Manufacturer	Dimensions [mm]	IMEI	DUT Type
Device,	275.0 x 199.0 x 23.0		Tablet

## Exposure Conditions

Phantom Section	Position, Test Distance [mm]	Frequency [MHz]	Conversion Factor
5G	BACK, 14.00	6025.0	1.0

## Hardware Setup

Phantom	Medium	Probe, Calibration Date	DAE, Calibration Date
mmWave - xxxx	Air -	EUmmWV4 - SN9441_F1-55GHz, 2022-11-18	DAE4 Sn853, 2022-07-20

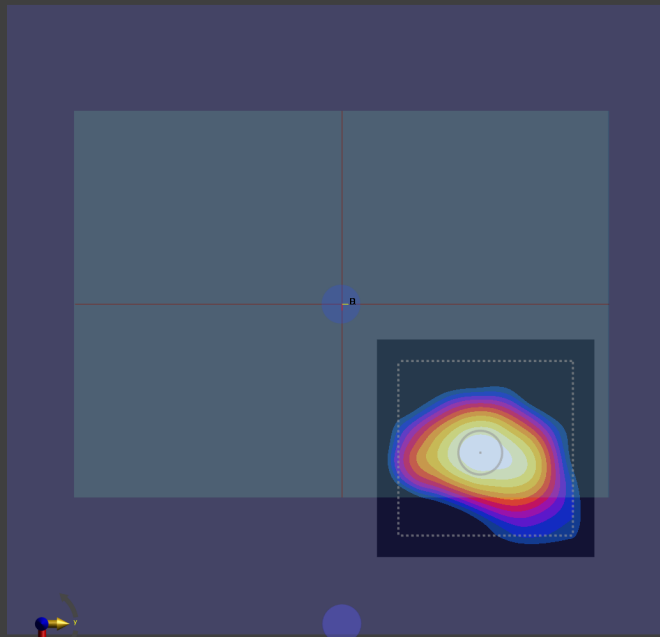
## Scans Setup

Scan Type	5G Scan
Grid Extents [mm]	100.0 x 100.0
Grid Steps [lambda]	0.0625 x 0.0625
Sensor Surface [mm]	14.0

## Measurement Results

Date	2023-05-22, 05:00
Avg. Area [cm <sup>2</sup> ]	4.00
psPDn+ [W/m <sup>2</sup> ]	3.87
psPDtot+ [W/m <sup>2</sup> ]	4.17
H <sub>max</sub> [A/m]	0.110
E <sub>max</sub> [V/m]	53.9
max(S <sub>tot</sub> ) [W/m <sup>2</sup> ]	4.82
Power Drift [dB]	-0.02
iPDn	4.13

sPDtot+ (4.0cm2, circ) [dB(4.17W/m^2)]



## Measurement Report for Device

### Device Under Test Properties

Model, Manufacturer	Dimensions [mm]	IMEI	DUT Type
Device,	275.0 x 199.0 x 23.0		Tablet

### Exposure Conditions

Phantom Section	Position, Test Distance [mm]	Frequency [MHz]	Conversion Factor
5G	EDGE 2, 3.00	6665.0	1.0

### Hardware Setup

Phantom	Medium	Probe, Calibration Date	DAE, Calibration Date
mmWave - xxxx	Air -	EUmmWV4 - SN9441_F1-55GHz, 2022-11-18	DAE4 Sn853, 2022-07-20

### Scans Setup

Scan Type	5G Scan
Grid Extents [mm]	100.0 x 100.0
Grid Steps [lambda]	0.0625 x 0.0625
Sensor Surface [mm]	3.0

### Measurement Results

Date	2023-05-22, 03:23
Avg. Area [cm <sup>2</sup> ]	4.00
psPDn+ [W/m <sup>2</sup> ]	2.61
psPDtot+ [W/m <sup>2</sup> ]	3.41
H <sub>max</sub> [A/m]	0.134
E <sub>max</sub> [V/m]	42.4
max(S <sub>tot</sub> ) [W/m <sup>2</sup> ]	4.71
Power Drift [dB]	0.13
iPDn	3.07

sPDtot+ (4.0cm2, circ) [dB(3.41W/m^2)]

