

#01_WLAN2.4GHz_802.11b 1Mbps_Bottom Face_0mm_Ch11;Ant 7

Communication System: , 802.11b; Frequency: 2462 MHz;Duty Cycle: 1:1.021

Medium: HSL_2450_230509 Medium parameters used: $f = 2462$ MHz; $\sigma = 1.82$ S/m; $\epsilon_r = 39.975$; $\rho = 1000$ kg/m³

Ambient Temperature : 23.5 °C ; Liquid Temperature : 22.5 °C

DASY5 Configuration:

- Probe: EX3DV4 - SN3728; ConvF(7.47, 7.47, 7.47) @ 2462 MHz; Calibrated: 2023/3/22
- Sensor-Surface: 1.4mm (Mechanical Surface Detection)
- Electronics: DAE4 Sn1512; Calibrated: 2023/3/20
- Phantom: ELI v4.0_Mid; Type: QDOVA001AA; Serial: TP:1026
- Measurement SW: DASY52, Version 52.10 (4);SEMCAD X Version 14.6.14 (7483)

Area Scan (81x101x1): Interpolated grid: dx=1.200 mm, dy=1.200 mm

Maximum value of SAR (interpolated) = 2.08 W/kg

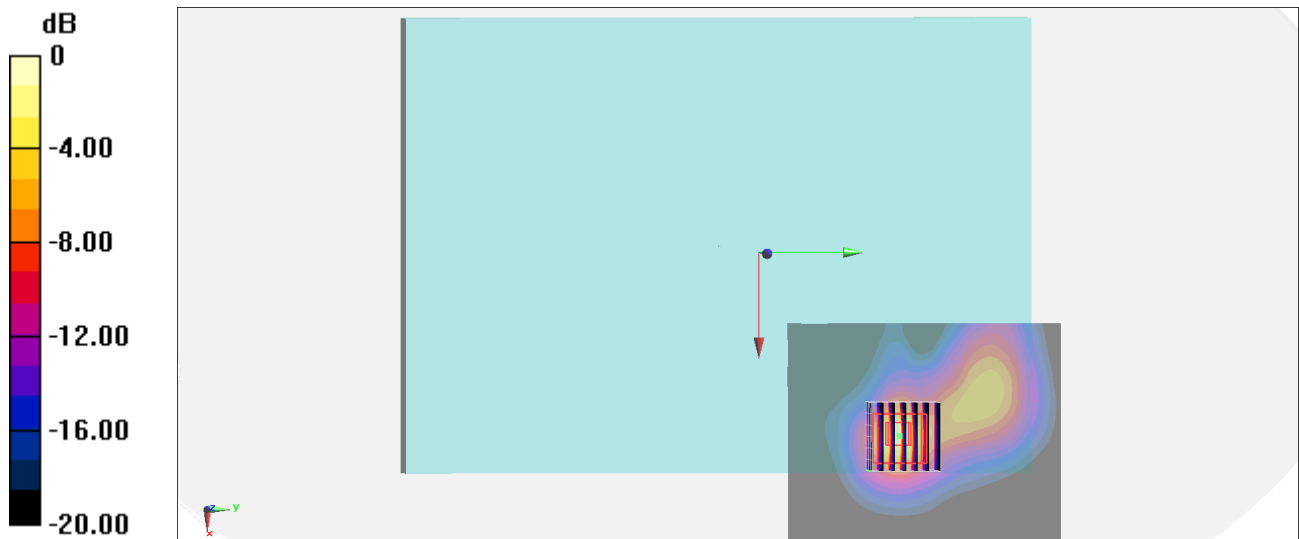
Zoom Scan (7x7x7)/Cube 0: Measurement grid: dx=5mm, dy=5mm, dz=5mm

Reference Value = 34.30 V/m; Power Drift = -0.07 dB

Peak SAR (extrapolated) = 2.77 W/kg

SAR(1 g) = 0.996 W/kg; SAR(10 g) = 0.353 W/kg

Maximum value of SAR (measured) = 1.96 W/kg



0 dB = 1.96 W/kg = 2.92 dBW/kg

#02_WLAN5GHz_802.11a 6Mbps_Edge 2_3mm_Ch56;Ant 8

Communication System: 802.11a; Frequency: 5280 MHz; Duty Cycle: 1:1

Medium: HSL_5G_230516 Medium parameters used: $f = 5280$ MHz; $\sigma = 4.866$ S/m; $\epsilon_r = 36.438$; $\rho = 1000$ kg/m³

Ambient Temperature : 23.5 °C; Liquid Temperature : 22.5 °C

DASY5 Configuration:

- Probe: EX3DV4 - SN3728; ConvF(5.23, 5.23, 5.23) @ 5280 MHz; Calibrated: 2023/3/22
- Sensor-Surface: 1.4mm (Mechanical Surface Detection)
- Electronics: DAE4 Sn1512; Calibrated: 2023/3/20
- Phantom: ELI v4.0_Mid; Type: QDOVA001AA; Serial: TP:1026
- Measurement SW: DASY52, Version 52.10 (4); SEMCAD X Version 14.6.14 (7483)

Area Scan (81x111x1): Interpolated grid: dx=1.000 mm, dy=1.000 mm

Maximum value of SAR (interpolated) = 2.54 W/kg

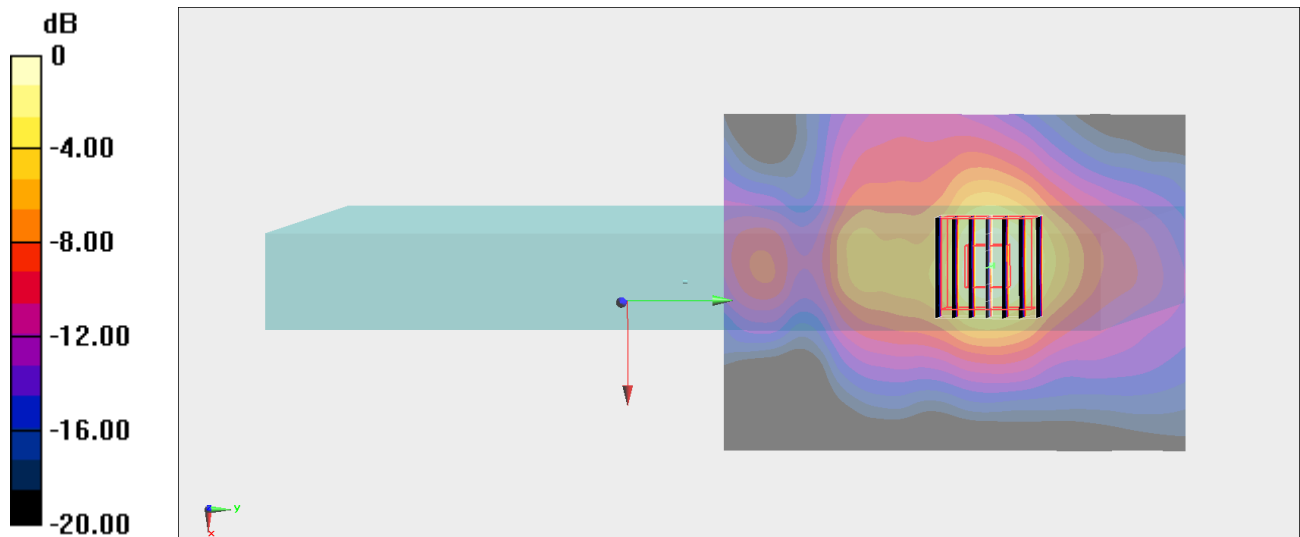
Zoom Scan (7x7x7)/Cube 0: Measurement grid: dx=4mm, dy=4mm, dz=1.4mm

Reference Value = 22.41 V/m; Power Drift = -0.05 dB

Peak SAR (extrapolated) = 3.48 W/kg

SAR(1 g) = 1.02 W/kg; SAR(10 g) = 0.364 W/kg

Maximum value of SAR (measured) = 2.22 W/kg



0 dB = 2.22 W/kg = 3.46 dBW/kg

#03_WLAN5GHz_802.11ac-VHT80 MCS0_Edge 2_3mm_Ch138;Ant 7+8

Communication System: 802.11ac; Frequency: 5690 MHz; Duty Cycle: 1:1

Medium: HSL_5G_230516 Medium parameters used : $f = 5690$ MHz; $\sigma = 5.227$ S/m; $\epsilon_r = 35.719$; $\rho = 1000$ kg/m³

Ambient Temperature : 23.5 °C ; Liquid Temperature : 22.5 °C

DASY5 Configuration:

- Probe: EX3DV4 - SN3728; ConvF(4.72, 4.72, 4.72) @ 5690 MHz; Calibrated: 2023/3/22
- Sensor-Surface: 1.4mm (Mechanical Surface Detection)
- Electronics: DAE4 Sn1512; Calibrated: 2023/3/20
- Phantom: ELI v4.0_Mid; Type: QDOVA001AA; Serial: TP:1026
- Measurement SW: DASY52, Version 52.10 (4); SEMCAD X Version 14.6.14 (7483)

Area Scan (91x121x1): Interpolated grid: dx=1.000 mm, dy=1.000 mm

Maximum value of SAR (interpolated) = 2.31 W/kg

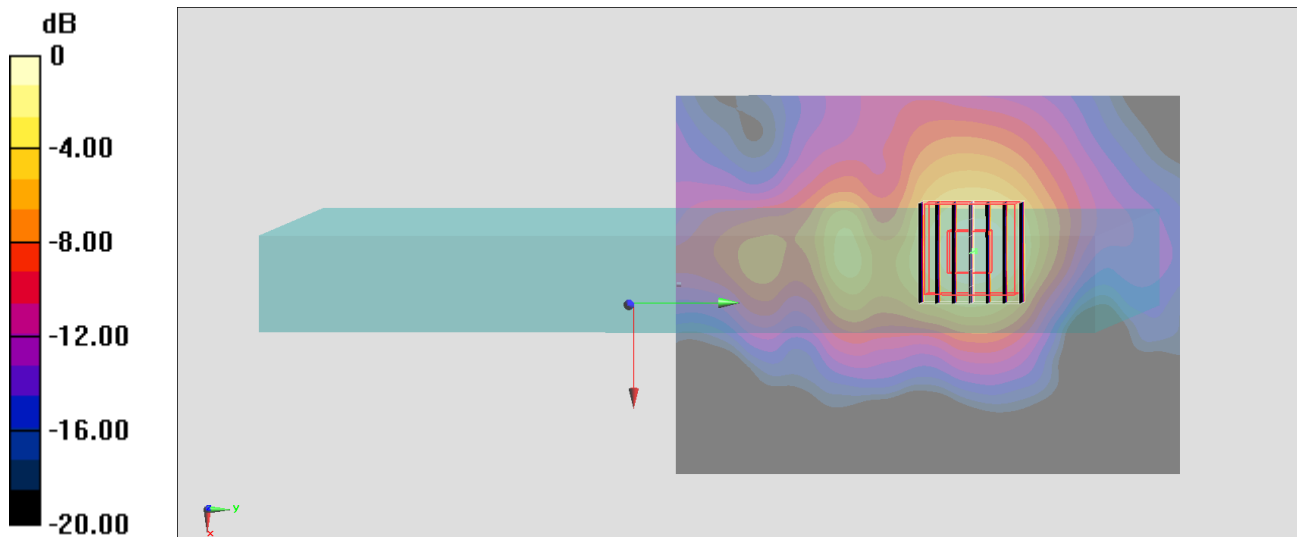
Zoom Scan (7x7x7)/Cube 0: Measurement grid: dx=4mm, dy=4mm, dz=1.4mm

Reference Value = 23.29 V/m; Power Drift = -0.03 dB

Peak SAR (extrapolated) = 3.96 W/kg

SAR(1 g) = 1.08 W/kg; SAR(10 g) = 0.426 W/kg

Maximum value of SAR (measured) = 2.17 W/kg



0 dB = 2.17 W/kg = 3.37 dBW/kg

#04_WLAN5GHz_802.11ac-VHT80 MCS0_Bottom Face_0mm_Ch155;Ant 7

Communication System: 802.11ac; Frequency: 5775 MHz; Duty Cycle: 1:1

Medium: HSL_5G_230516 Medium parameters used: $f = 5775$ MHz; $\sigma = 5.362$ S/m; $\epsilon_r = 35.536$; $\rho = 1000$ kg/m³

Ambient Temperature : 23.5 °C; Liquid Temperature : 22.5 °C

DASY5 Configuration:

- Probe: EX3DV4 - SN3728; ConvF(4.72, 4.72, 4.72) @ 5775 MHz; Calibrated: 2023/3/22
- Sensor-Surface: 1.4mm (Mechanical Surface Detection)
- Electronics: DAE4 Sn1512; Calibrated: 2023/3/20
- Phantom: ELI v4.0_Mid; Type: QDOVA001AA; Serial: TP:1026
- Measurement SW: DASY52, Version 52.10 (4); SEMCAD X Version 14.6.14 (7483)

Area Scan (81x101x1): Interpolated grid: dx=1.000 mm, dy=1.000 mm

Maximum value of SAR (interpolated) = 2.81 W/kg

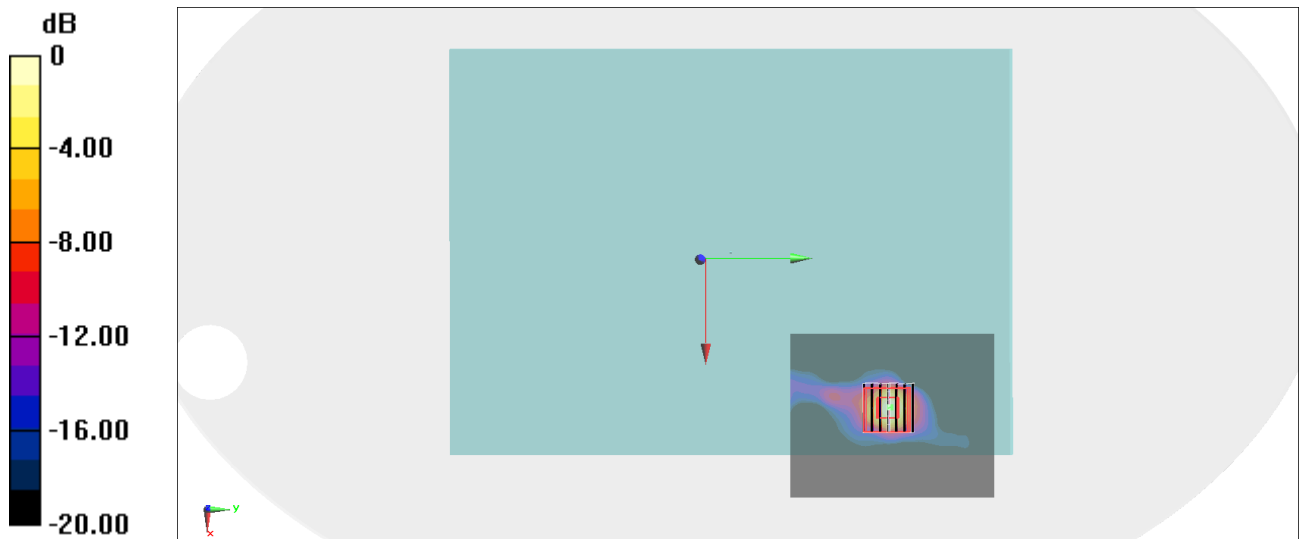
Zoom Scan (7x7x7)/Cube 0: Measurement grid: dx=4mm, dy=4mm, dz=1.4mm

Reference Value = 22.58 V/m; Power Drift = -0.04 dB

Peak SAR (extrapolated) = 4.97 W/kg

SAR(1 g) = 0.985 W/kg; SAR(10 g) = 0.239 W/kg

Maximum value of SAR (measured) = 2.82 W/kg



0 dB = 2.82 W/kg = 4.50 dBW/kg

#05_WLAN6GHz_802.11ax-HE160 MCS0_Bottom Face_0mm_Ch207;Ant 8

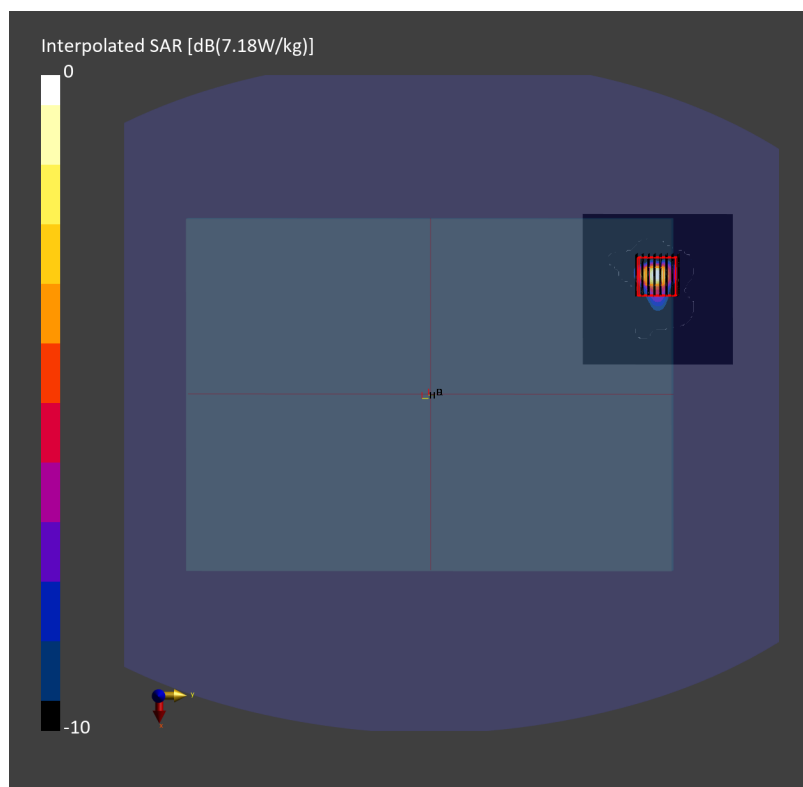
Communication System: 802.11ax; Frequency: 6985.000 MHz; Duty Cycle: 1:1.007
Medium: HSL_6G_230521 Medium parameters used: $f=6985.000$ MHz; $\sigma=6.62$ S/m; $\epsilon_r=34.2$
Ambient Temperature: 23.4°C; Liquid Temperature: 22.4°C

DASY6 Configuration:

- Probe: EX3DV4 - SN3925; ConvF(5.35, 5.35, 5.35); Calibrated: 2023-04-25
- Sensor-Surface: 1.4 mm
- Electronics: DAE4 Sn853; Calibrated: 2022-07-20
- Phantom: ELI V5.0 (20deg probe tilt); Serial: 1131; Section: Flat
- Measurement Software: 16.2.4.2524
- UID: WLAN, 10743-AAC

Area Scan (85.0 mm x 85.0 mm): Measurement Grid: 8.5 mm x 8.5 mm
SAR (1g) = 1.02 W/kg; SAR (10g) = 0.231 W/kg;

Zoom Scan (22.0 mm x 22.0 mm x 22.0 mm): Measurement Grid: 3.4 mm x 3.4 mm x 1.4 mm
Power Drift = 0.03 dB
SAR (1g) = 1.12 W/kg; SAR (8g) = 0.299 W/kg; SAR (10g) = 0.249 W/kg
psAPD (1.0cm², sq) = 11.2 [W/m²]; psAPD (4.0cm², sq) = 5.98 [W/m²]



#06_Bluetooth_1Mbps_Bottom Face_0mm_Ch0;Ant 7

Communication System: Bluetooth; Frequency: 2402 MHz; Duty Cycle: 1:1.302

Medium: HSL_2450_230509 Medium parameters used : $f = 2402$ MHz; $\sigma = 1.75$ S/m; $\epsilon_r = 40.231$; $\rho = 1000$ kg/m³

Ambient Temperature : 23.5 °C ; Liquid Temperature : 22.5 °C

DASY5 Configuration:

- Probe: EX3DV4 - SN3728; ConvF(7.47, 7.47, 7.47) @ 2402 MHz; Calibrated: 2023/3/22
- Sensor-Surface: 1.4mm (Mechanical Surface Detection)
- Electronics: DAE4 Sn1512; Calibrated: 2023/3/20
- Phantom: ELI v4.0_Mid; Type: QDOVA001AA; Serial: TP:1026
- Measurement SW: DASY52, Version 52.10 (4); SEMCAD X Version 14.6.14 (7483)

Area Scan (81x101x1): Interpolated grid: dx=1.200 mm, dy=1.200 mm

Maximum value of SAR (interpolated) = 0.0805 W/kg

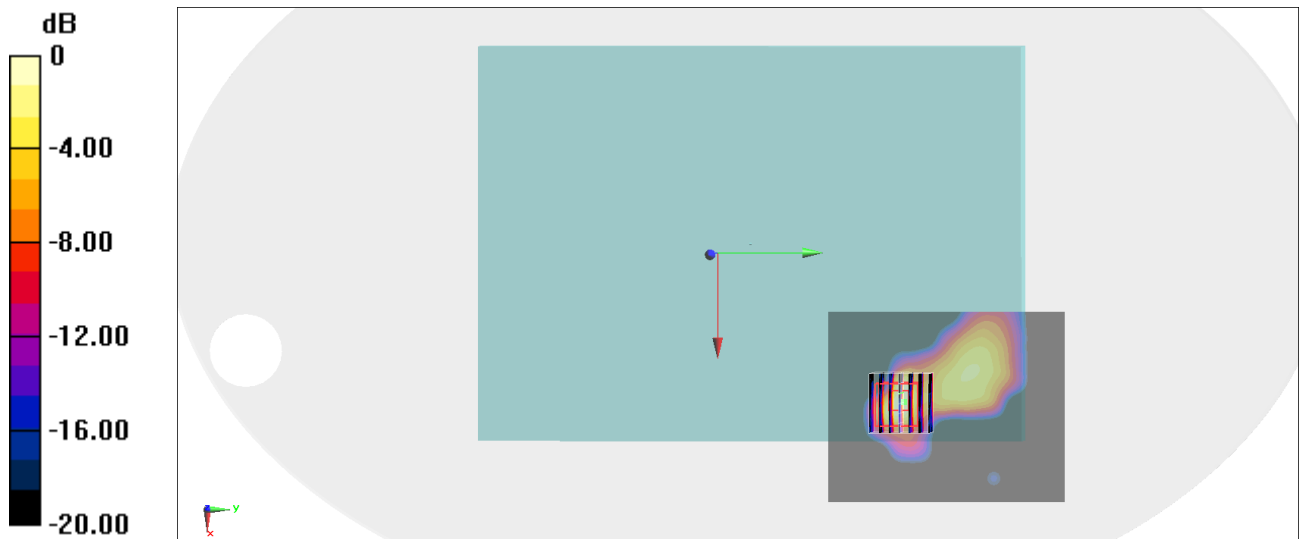
Zoom Scan (7x7x7)/Cube 0: Measurement grid: dx=5mm, dy=5mm, dz=5mm

Reference Value = 6.444 V/m; Power Drift = 0.01 dB

Peak SAR (extrapolated) = 0.101 W/kg

SAR(1 g) = 0.039 W/kg; SAR(10 g) = 0.013 W/kg

Maximum value of SAR (measured) = 0.0705 W/kg



0 dB = 0.0705 W/kg = -11.52 dBW/kg

#07_NFC_Bottom Face 0mm_13.56MHz

Communication System: CW; Frequency: 13.56 MHz; Duty Cycle: 1:1

Medium: HSL_13M_230526 Medium parameters used: $f = 14$ MHz; $\sigma = 0.748$ S/m; $\epsilon_r = 53.7$; $\rho = 1000$ kg/m³

Ambient Temperature : 23.5 °C; Liquid Temperature : 22.5 °C

DASY5 Configuration:

- Probe: EX3DV4 - SN7306; ConvF(16.39, 16.39, 16.39) @ 13.56 MHz; Calibrated: 2022/7/28
- Sensor-Surface: 1.4mm (Mechanical Surface Detection)
- Electronics: DAE4 Sn1311; Calibrated: 2022/8/25
- Phantom: ELI v4.0_Mid; Type: QDOVA001AA; Serial: TP:1026
- Measurement SW: DASY52, Version 52.10 (4); SEMCAD X Version 14.6.14 (7483)

Area Scan (141x101x1): Interpolated grid: dx=1.500 mm, dy=1.500 mm

Maximum value of SAR (interpolated) = 0.0805 W/kg

Zoom Scan (5x5x7)/Cube 0: Measurement grid: dx=8mm, dy=8mm, dz=5mm

Reference Value = 8.987 V/m; Power Drift = -0.01 dB

Peak SAR (extrapolated) = 0.0690 W/kg

SAR(1 g) = 0.00269 W/kg; SAR(10 g) = 0.000909 W/kg

Maximum value of SAR (measured) = 0.0455 W/kg

