

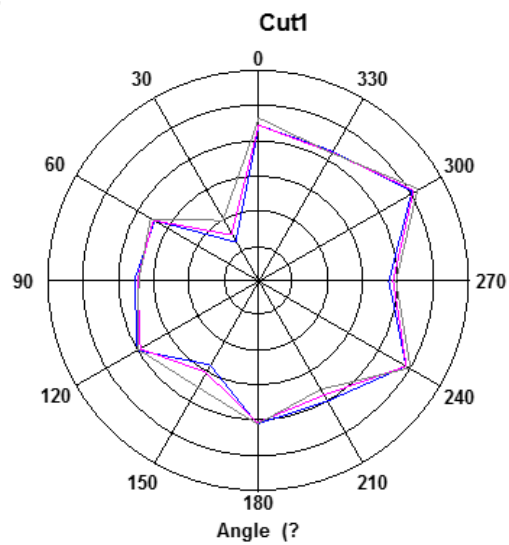
## Antenna Report

Company	Zebra Technologies Corporation
Model Name	10" ROW wwan ET45CB
Type	WLAN5GHz/2.4GHz /Bluetooth Antenna type : IFA
Support Feature	WLAN: BT5.1+BLE; 2.4GHz 802.11b/g/n/ac/ax HT20 5GHz 802.11a/n/ac/ax HT20/40/80
Peak Gain	BT: 2400~2483.5MHz: 1.2 dBi  WLAN: ANT6: 2400~2483.5MHz: 1.2 dBi 5150~5250MHz: 1.8 dBi 5250~5350MHz: 2.4 dBi 5470~5725MHz:2.0 dBi 5725~5850MHz:2.0 dBi ANT7: 2400~2483.5MHz: 1.5 dBi 5150~5250MHz: 1.5 dBi 5250~5350MHz: 1.2 dBi 5470~5725MHz:-0.2 dBi 5725~5850MHz:-0.7dBi

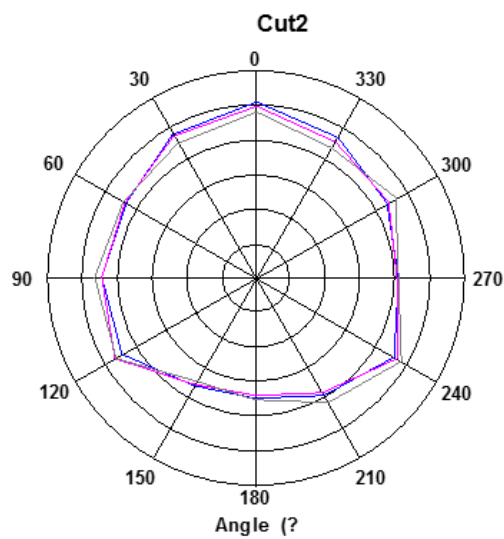
Test Site: GTS

ANT6:

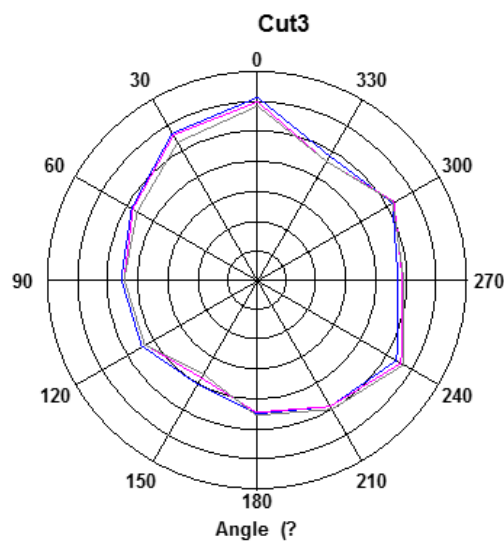
Phi0: 2410,2450,2480MHz



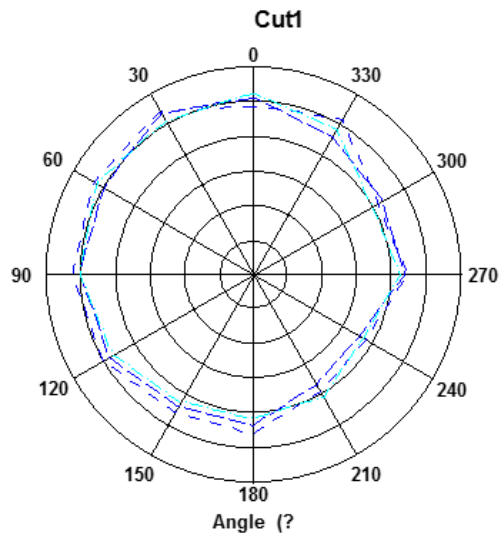
Phi90: 2410,2450,2480MHz



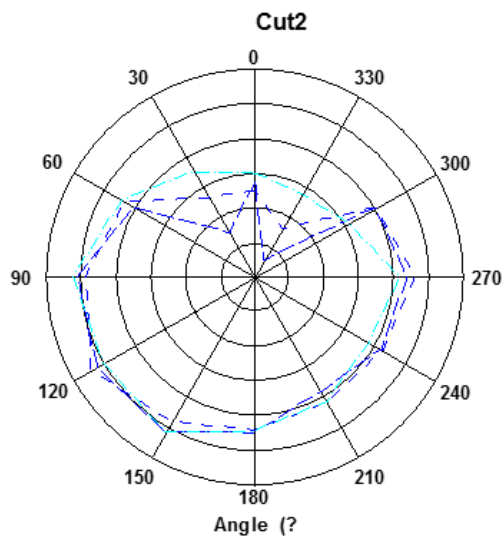
Theta90: 2410,2450,2480MHz



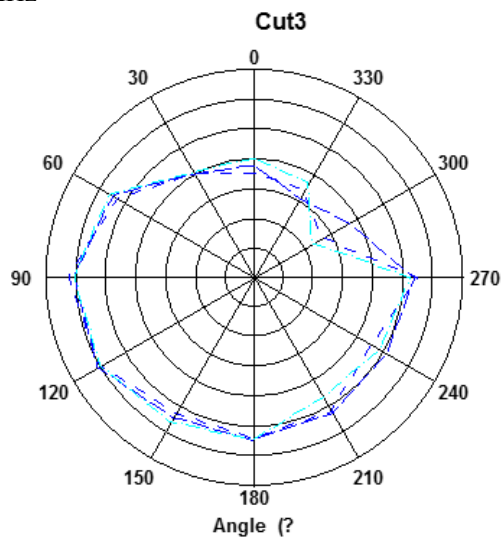
Phi0: 5150,5450,5850MHz



Phi90: 5150,5450,5850MHz

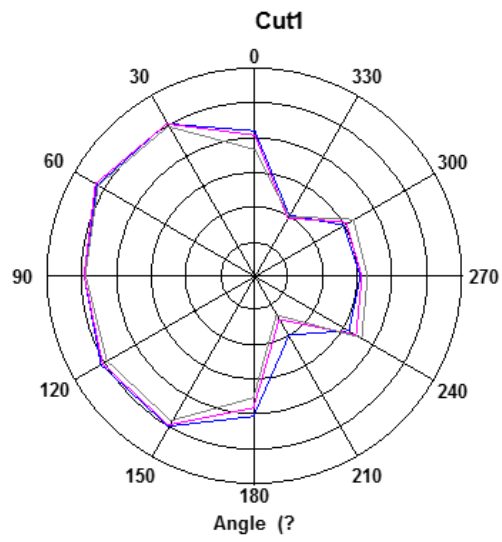


Theta90: 5150,5450,5850MHz

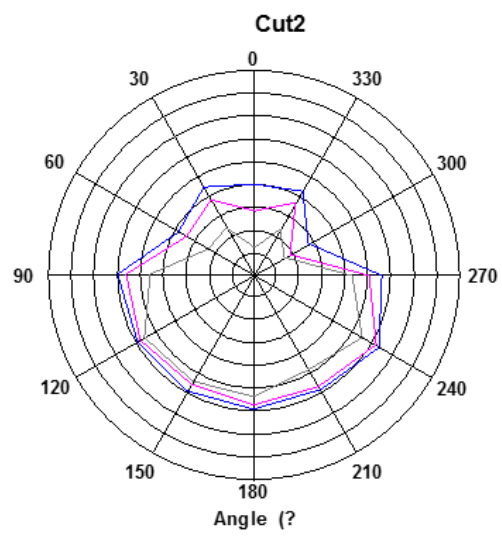


ANT7:

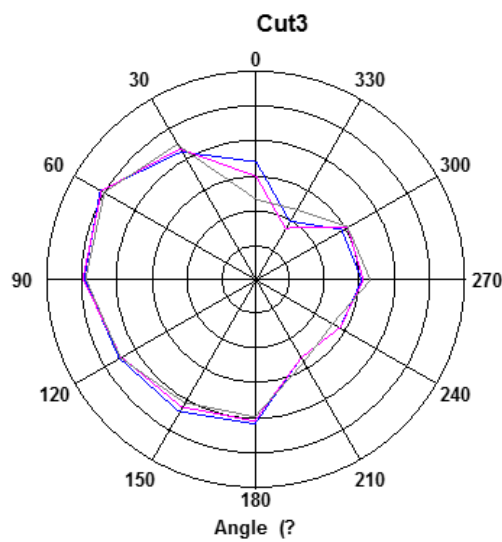
Phi0: 2410,2450,2480MHz



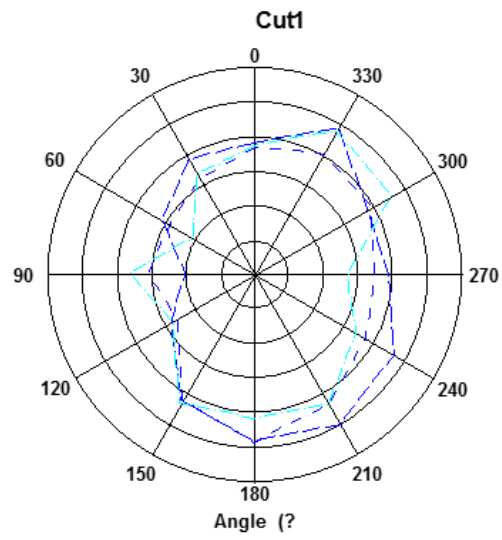
Phi90: 2410,2450,2480MHz



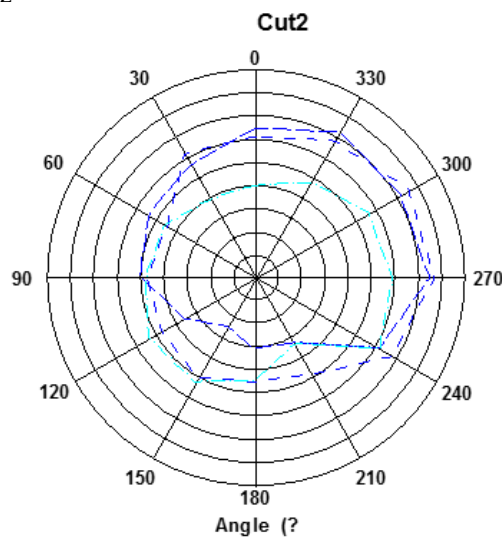
Theta90: 2410,2450,2480MHz



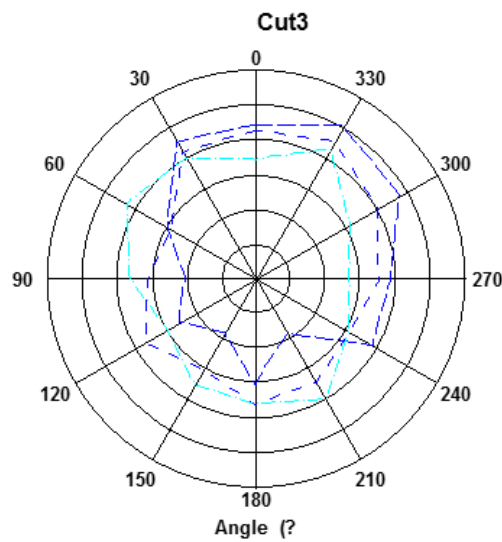
Phi0: 5150,5450,5850MHz



Phi90: 5150,5450,5850MHz



Theta90: 5150,5450,5850MHz



# Antenna Report

Company Zebra Technologies Corporation

Model Name ET45CB

Type Antenna type : IFA

Support Feature  
①

WWAN ROW:Antenna	Mode	Tx Band	Rx Band
ANT0 TRX1-LMH	Main LB/MB/HB	GSM:GSM850/900/1800/1900 3G: UMTS B1/2/4/5/8/19 LB: B5/8/17/19/20/28_N5/8/20/28 MB: B1/2/3/4/39/66_N1/2/3/66 HB: B7/38/40, N7/38/40	GSM:GSM850/900/1800/1900 3G: UMTS B1/2/4/5/8/19 LB: B5/8/17/19/20/28 N5/8/20/28 MB: B1/2/3/4/39/66 N1/2/3/66 HB: B7/38/40/41 N7/38/40
ANT1 DRX-LHU	LB/HB/UHB	B41, n77/78/79	LB: B5/8/17/19/20/28 N5/8/20/28 HB: B7/38/40/41 N7/38/40/41 UHB: B42/43 N77/78/79
ANT2 TRX0_LMH	LB/MB/HB	LB: B5/20 N5 MB: B1/2/4/3 N1/3 HB: B7/40/41 N7/40/41	LB: B5/20 N5 MB: B1/2/3 N1/3 HB: B7/38/40/41 N7/38/40/41
ANT3 TRX0-U_DRX-MH	MB/HB/UHB	UHB: B42/43 N77/78/79	MB: B1/2/3/4/39/66 N1/2/3/66 HB: B40 N40 UHB: B42/43 N77/78/79
ANT4 PM-MHU	MB/HB/UHB	B41, N41/77/78/79	MHB: B1/2/3/4/7/38/40/41/66 N1/2/3/7/38/40/41/66 UHB: B42/43 N77/78/79
ANT5 DM-MH_DRX-L	LB/MB/HB/UHB	B41, N41/77/78/79	LB: B5/26 N5 MHB: B1/2/3/4/7/38/41/66 N1/2/3/7/38/41/66 UHB: B42/43 N77/78/79
ANT6	WIFI/BT	BT/WIFI(2.4G/5G)	BT/WIFI(2.4G/5G)
ANT7	WIFI/GPS	WIFI(2.4G/5G)	WIFI(2.4G/5G) GPS L5
ANT8	GPS		GPS L1
ANT9	NFC	NFC	NFC

Peak Gain  
②

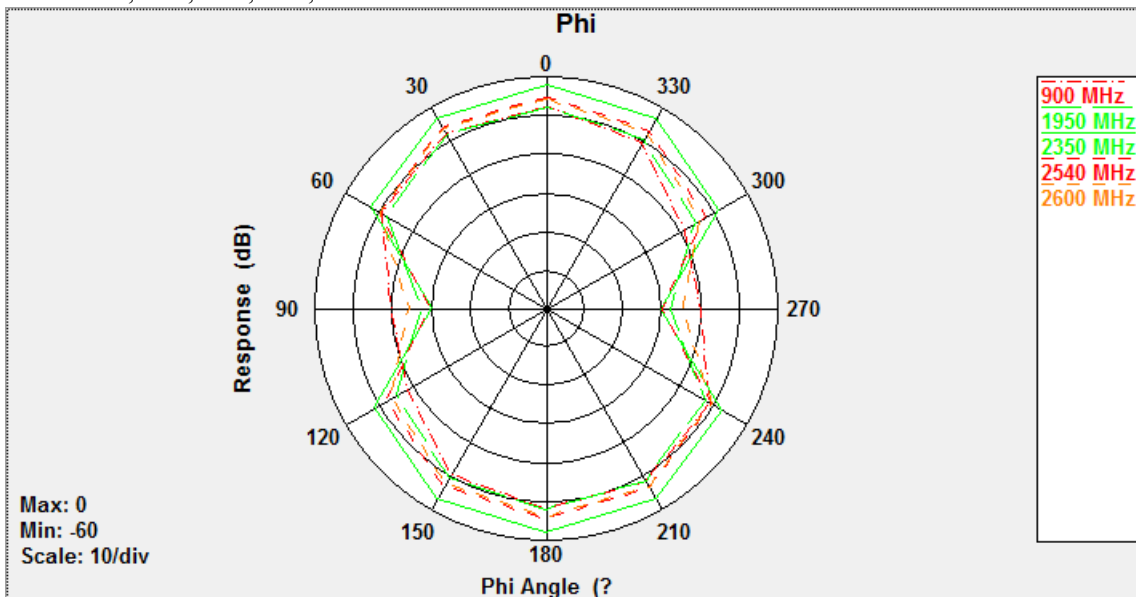
	Ant0	Ant1	Ant2	Ant3	Ant4	Ant5
FDD 1: EU, JP, Korea	1.2		1.4			
FDD 2(1850-1910 MHz): US	0.5		1.3			
FDD 3: EU, TW, JP 1710~1785	0.3		-0.2			
FDD 4(1710-1755 MHz): US	0.3		-0.2			
FDD 5(824-849 MHz): US	-0.3		-2.2			
FDD 6: JP 830-840						
FDD 7(2500-2570 MHz): EU	1.1		0.4			
FDD 8: EU, JP 880-915	-2.2					
FDD 17(704-716 MHz): US	-1					
FDD 19: JP 830-845	-0.3					
FDD 20: EU 832-862	-0.4		-0.3			
FDD 28: TW, JP 703-748	-1.2					
FDD 66: 1710-1780	0.1					
TDD 38: US, EU, China 2570-2620	1.0		0.7			
TDD 39: 1880-1920	-0.1					
TDD 40: US, EU, China 2300-2400	0.9		-1.5			
TDD 41: US, JP Full band 2496-2690		SRS peak gain 1.4	0.8		SRS peak gain 0.4	SRS peak gain -2.7
TDD 42: EU 3400-3600				0.3		
TDD 43: US, EU 3600-3800				-0.4		
n77(3300-3550 MHz)				SRS peak gain 0.3		
n77(3551-3750 MHz)		SRS peak gain -1.1		SRS peak gain -0.1	SRS peak gain -1.7	SRS peak gain -1.1
n77(3751-4200 MHz)				SRS peak gain -0.1		
n78(3300-3800 MHz)		SRS peak gain -1.2		SRS peak gain 0.3	SRS peak gain -2.2	SRS peak gain -1.1
n79 4400~5000		SRS peak gain 1.5		1.1	SRS peak gain -0.5	SRS peak gain -0.4
1710~1755 MHz( WCDMA band 4)	0.3					
880~915 MHz( GSM 900, WCDMA band 8)	-2.2					
1710-1785 MHz( GSM 1800,	0.3					

WCDMA band 3)						
1920-1980 MHz(WCDMA band 1)	1.2					

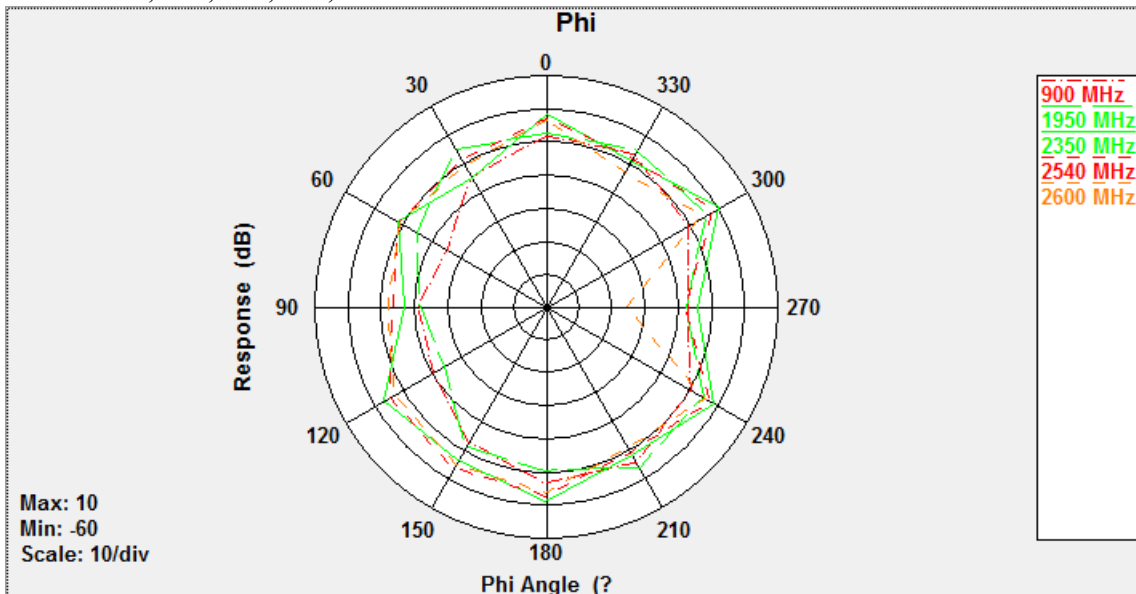
Test Site: SATIMO

ANT0:

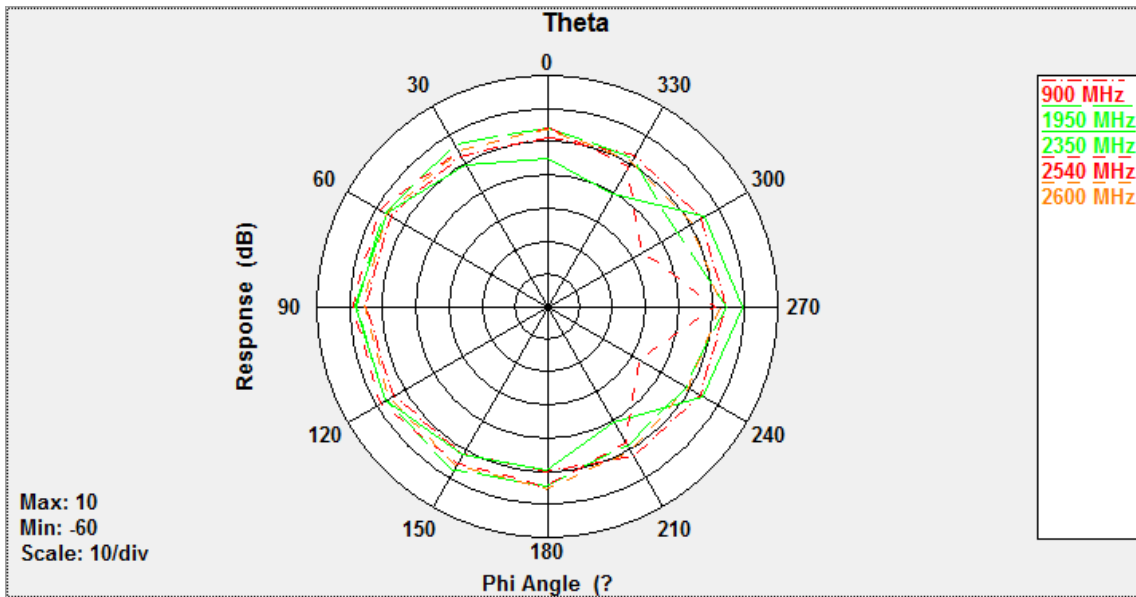
Phi0: 90,1950,2350,2540,2600MHz



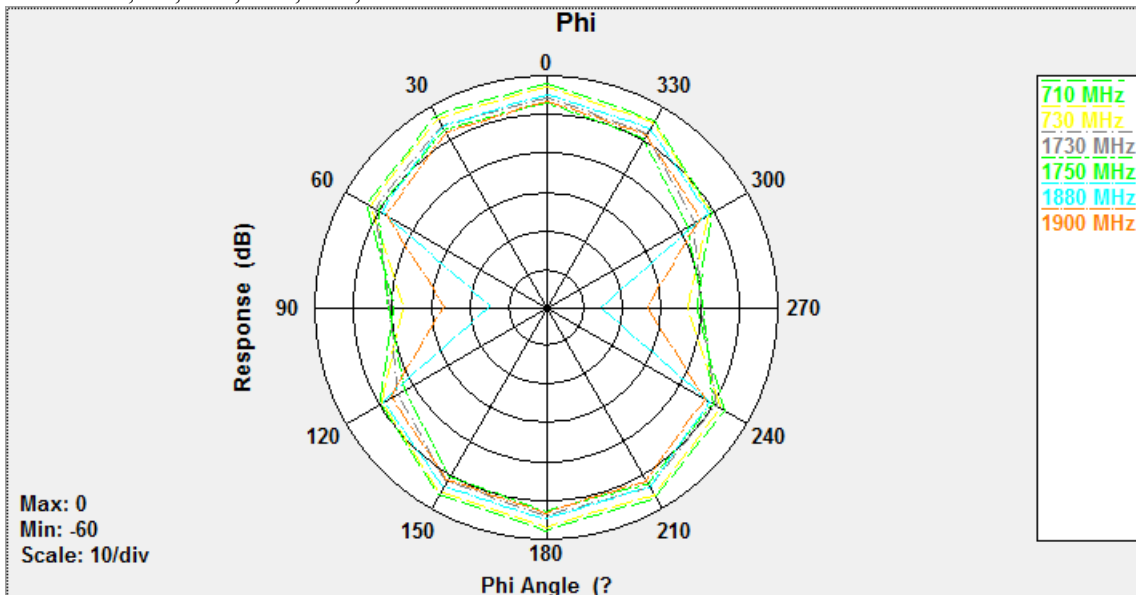
Phi90: 90,1950,2350,2540,2600MHz



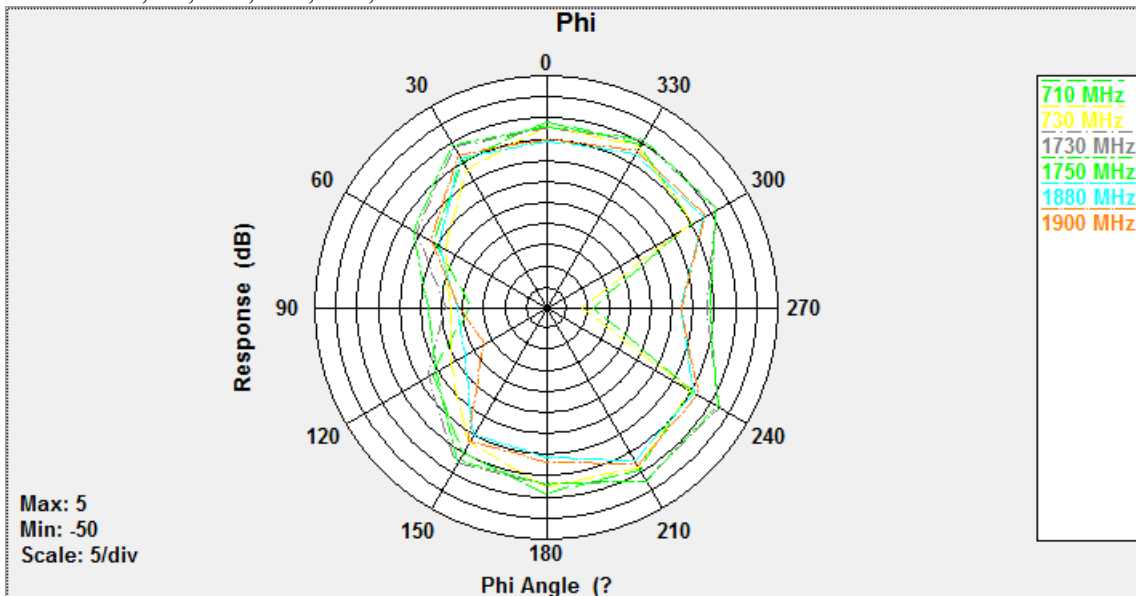
Theta90: 90,1950,2350,2540,2600MHz



Phi0: 710,730,1730,1750,1880,1900MHz

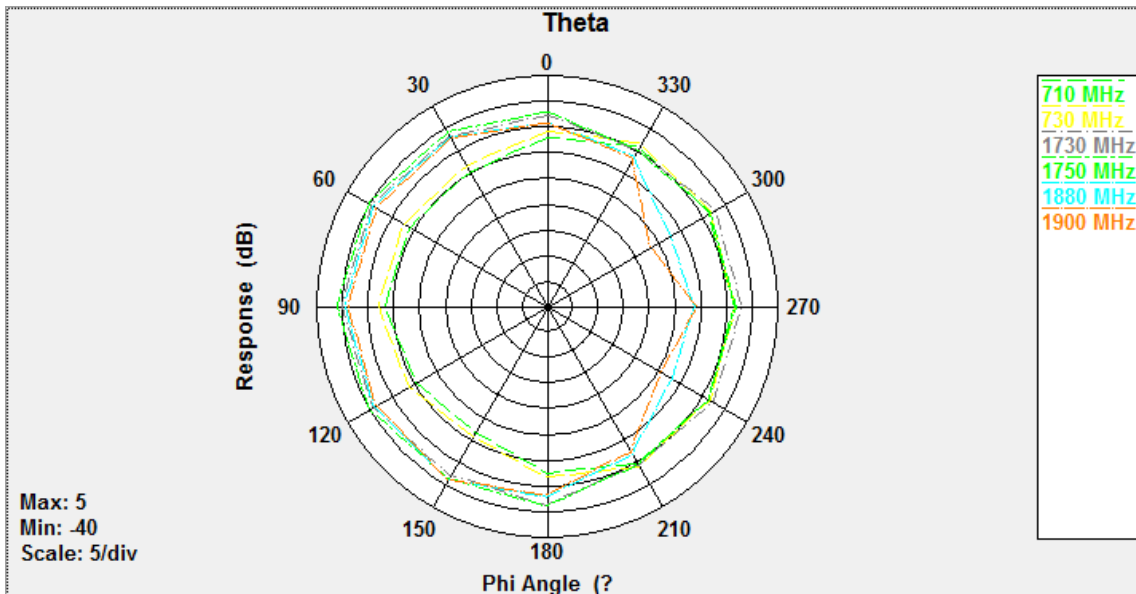


Phi90: 710,730,1730,1750,1880,1900MHz

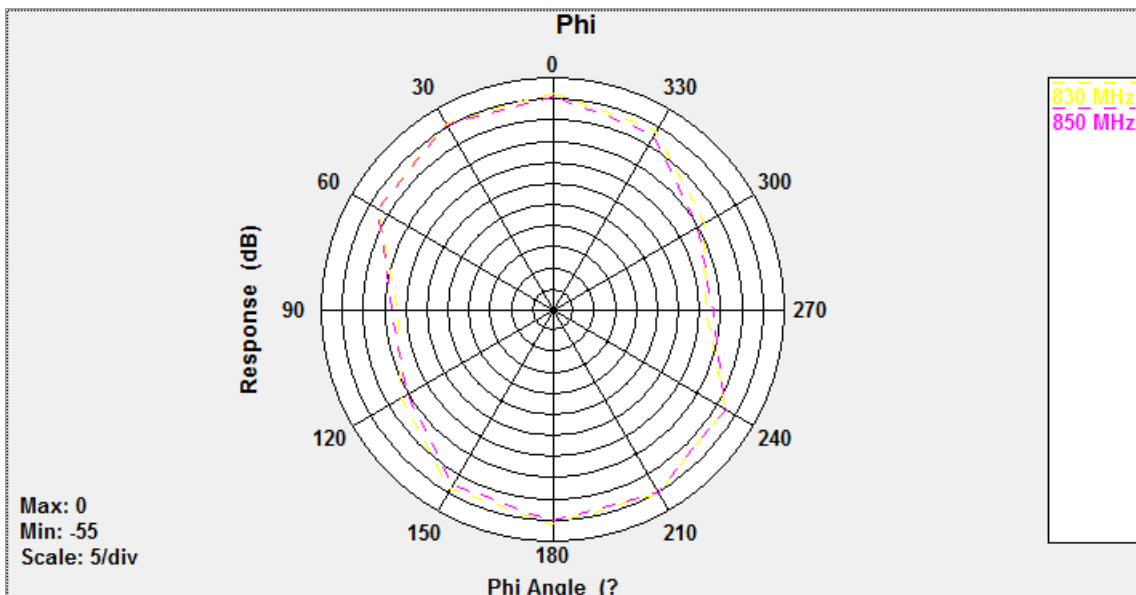


Theta90: 710,730,1730,1750,1880,1900MHz

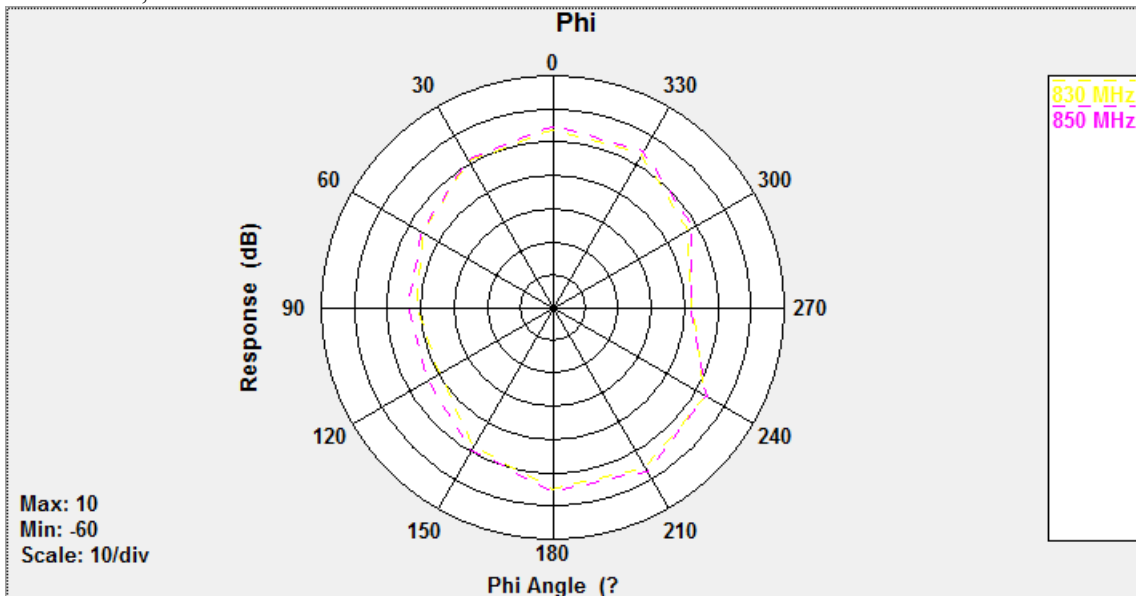




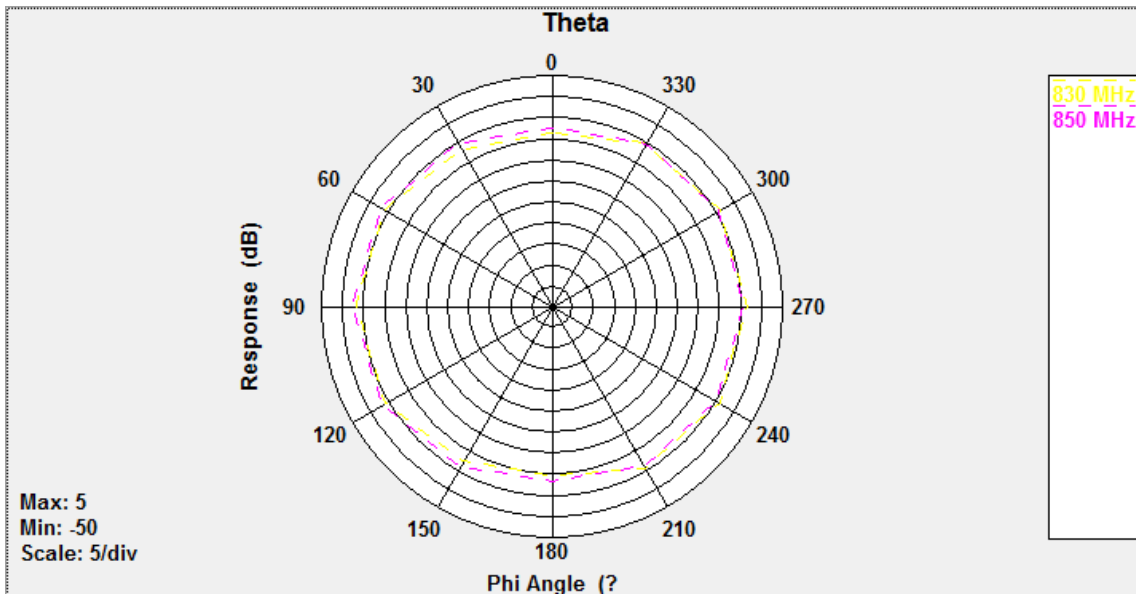
Phi0: 830,850MHz



Phi90: 830,850MHz

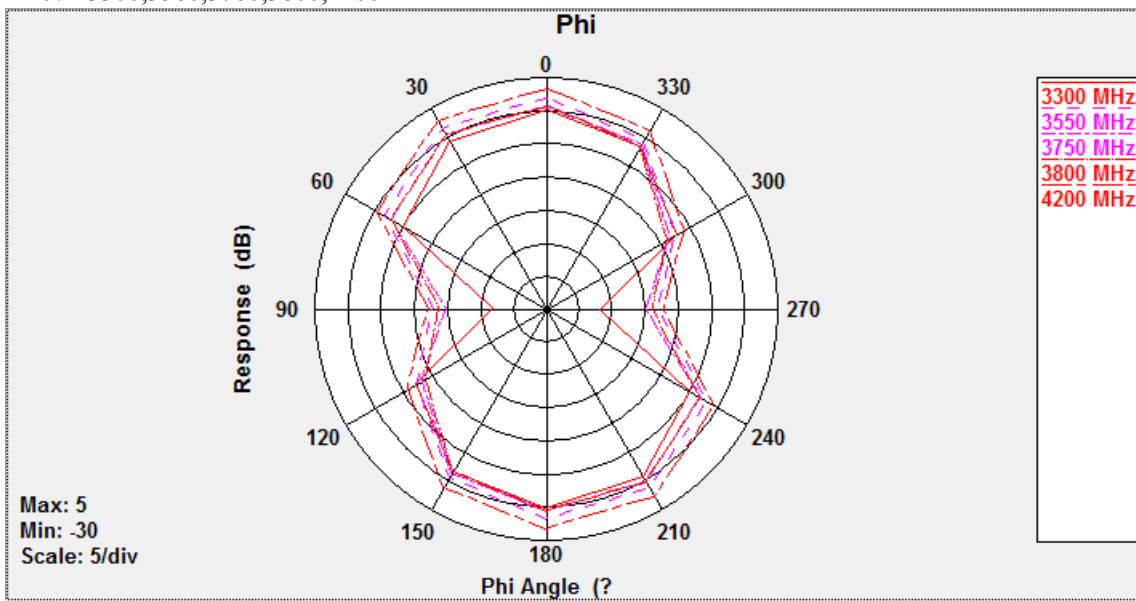


Theta90: 830,850MHz

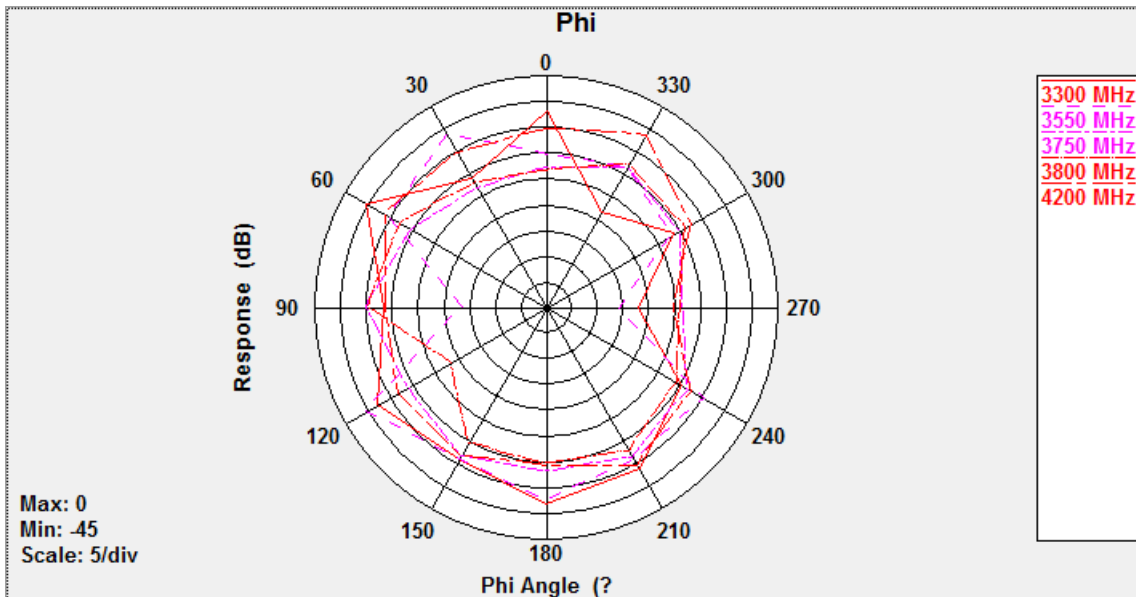


ANT1:

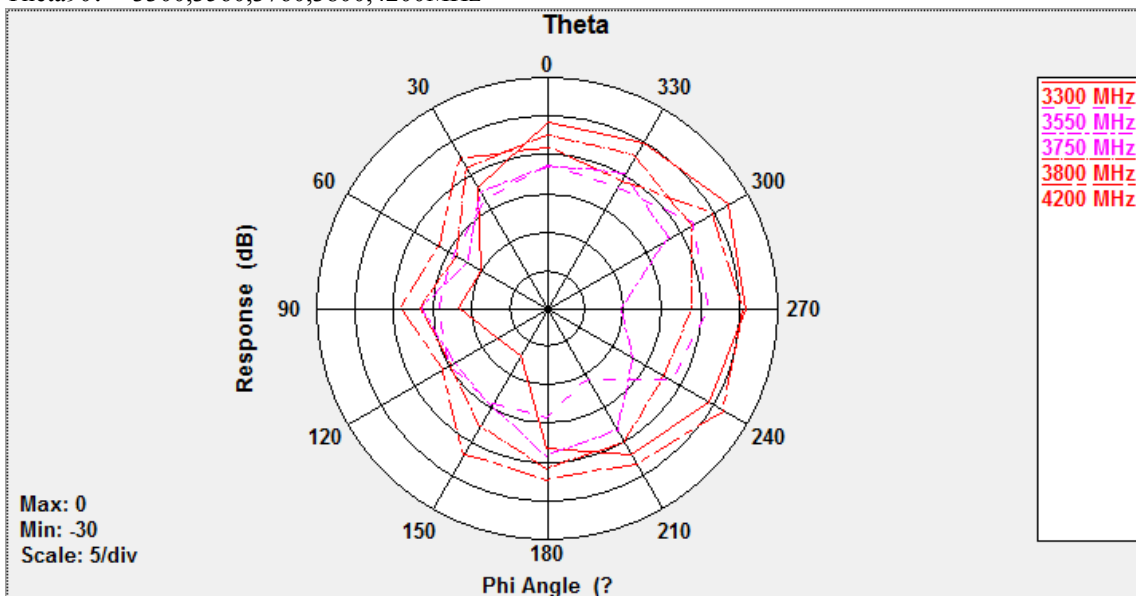
Phi0: 3300,3560,3760,3800,4200MHz



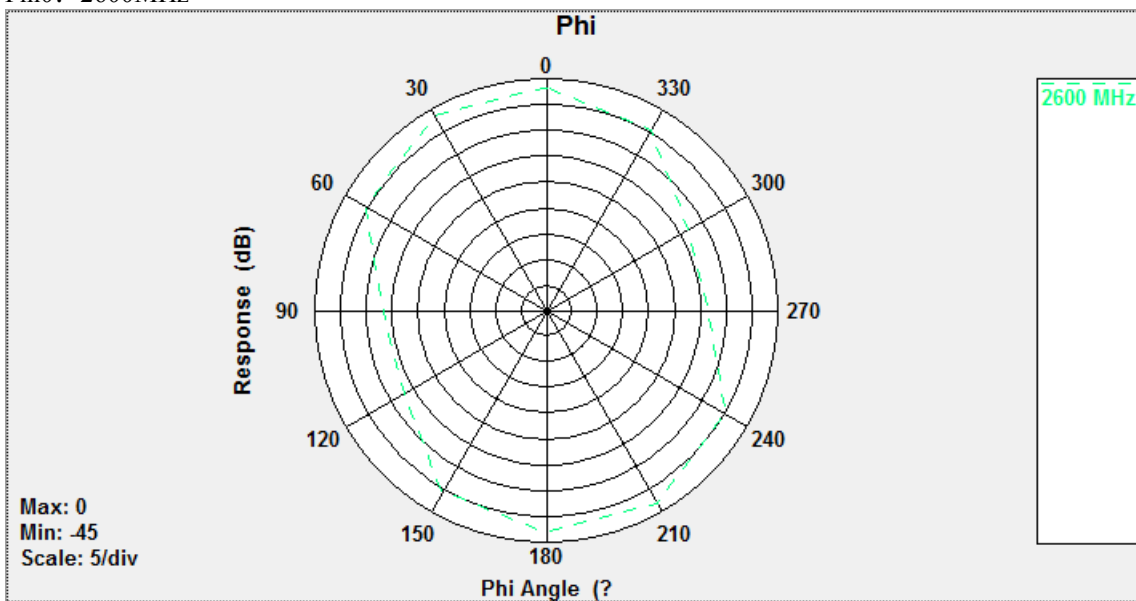
Phi90: 3300,3560,3760,3800,4200MHz



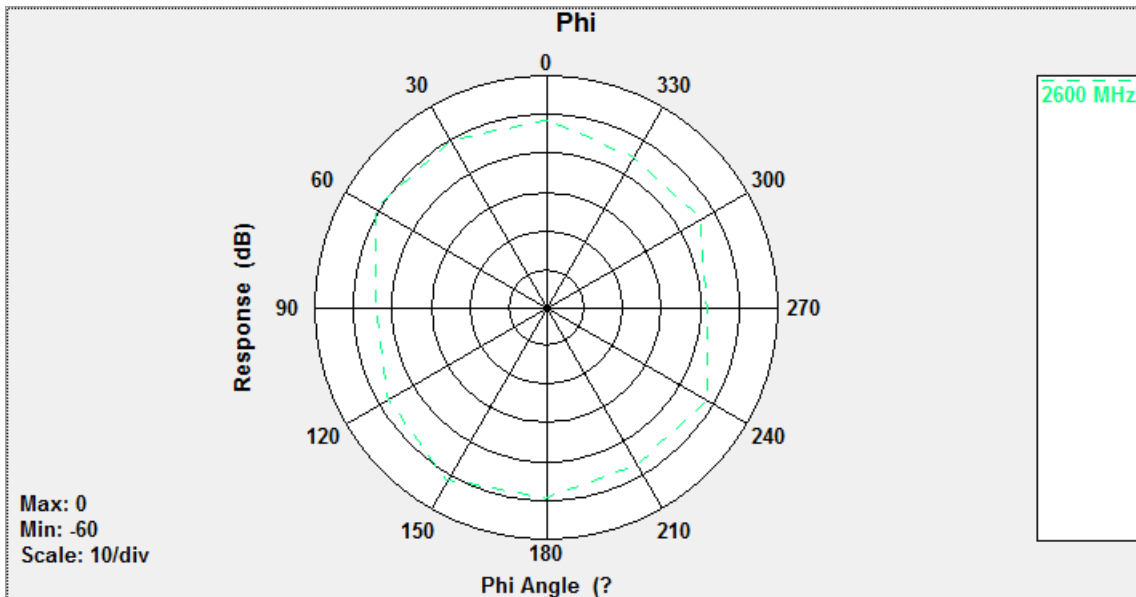
Theta90: 3300,3560,3760,3800,4200MHz



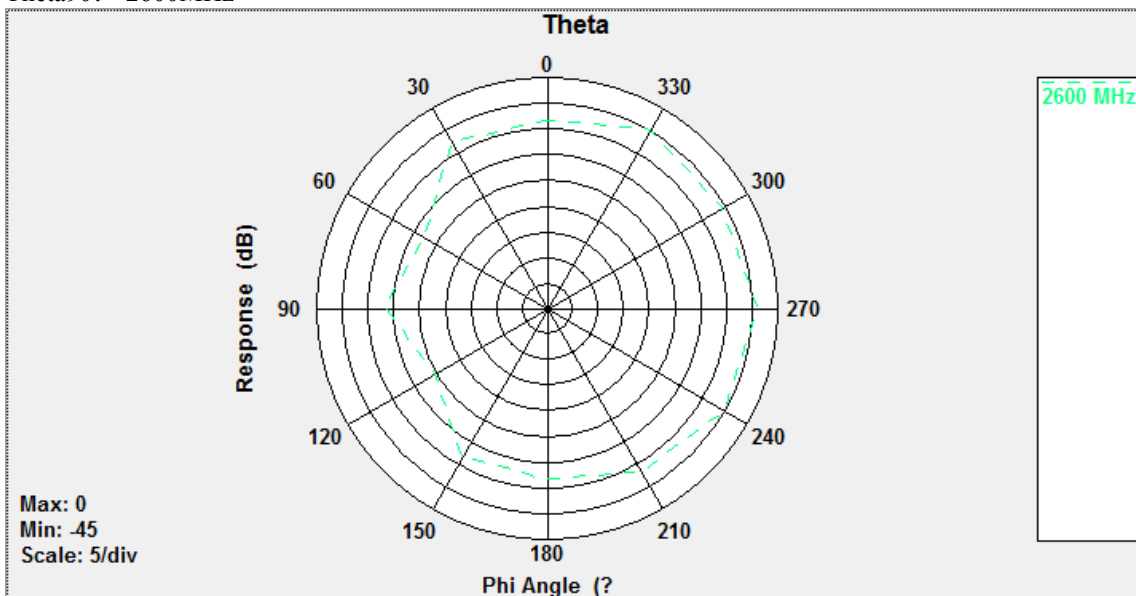
Phi0: 2600MHz



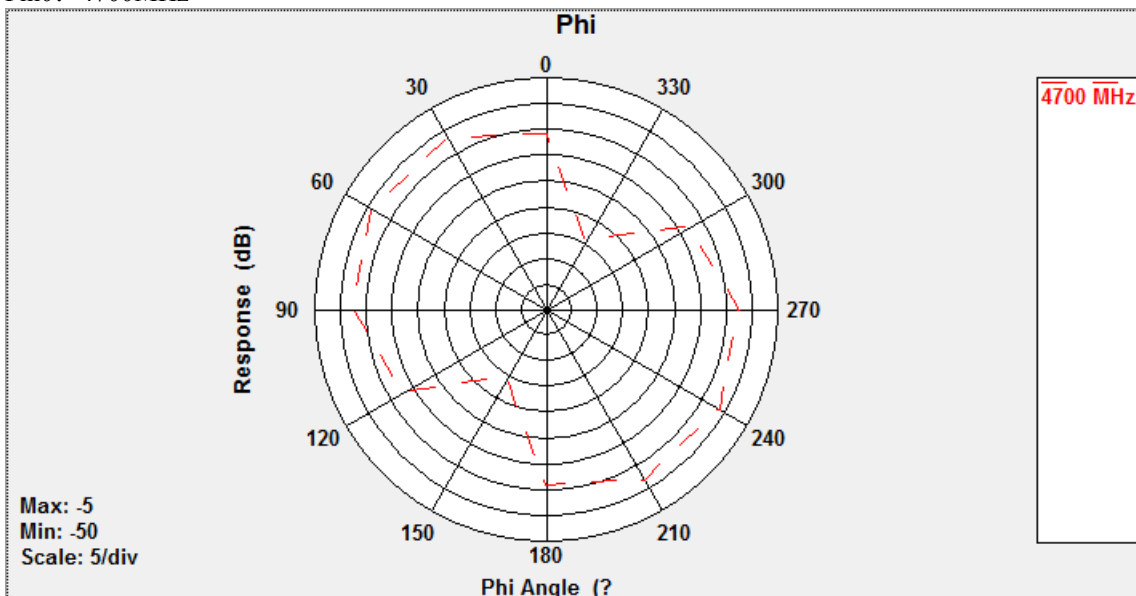
Phi90: 2600MHz



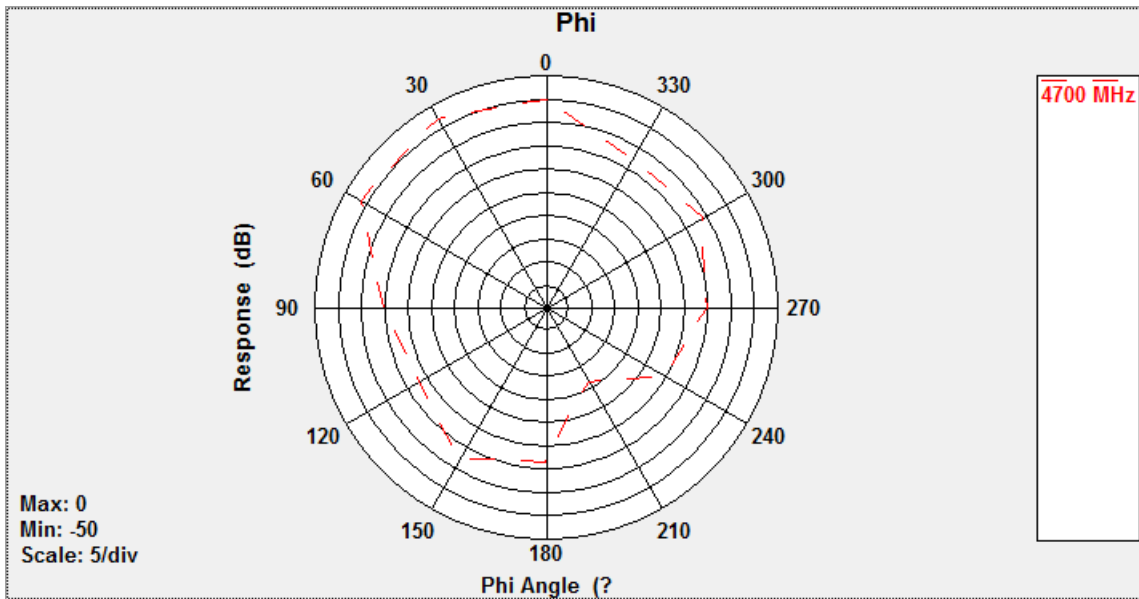
Theta90: 2600MHz



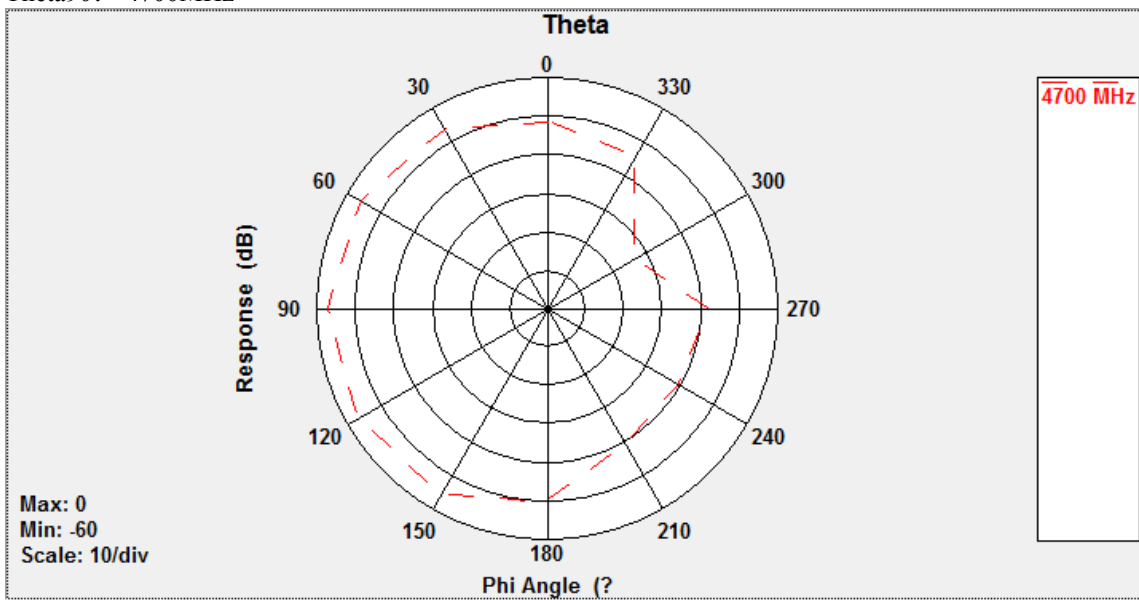
Phi0: 4700MHz



Phi90: 4700MHz

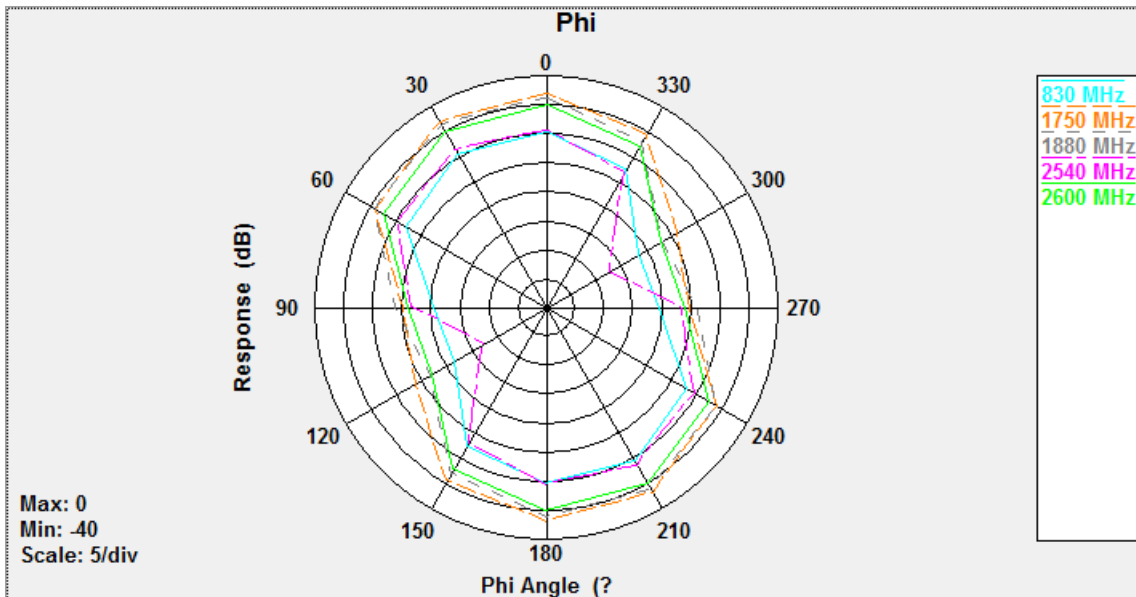


Theta90: 4700MHz

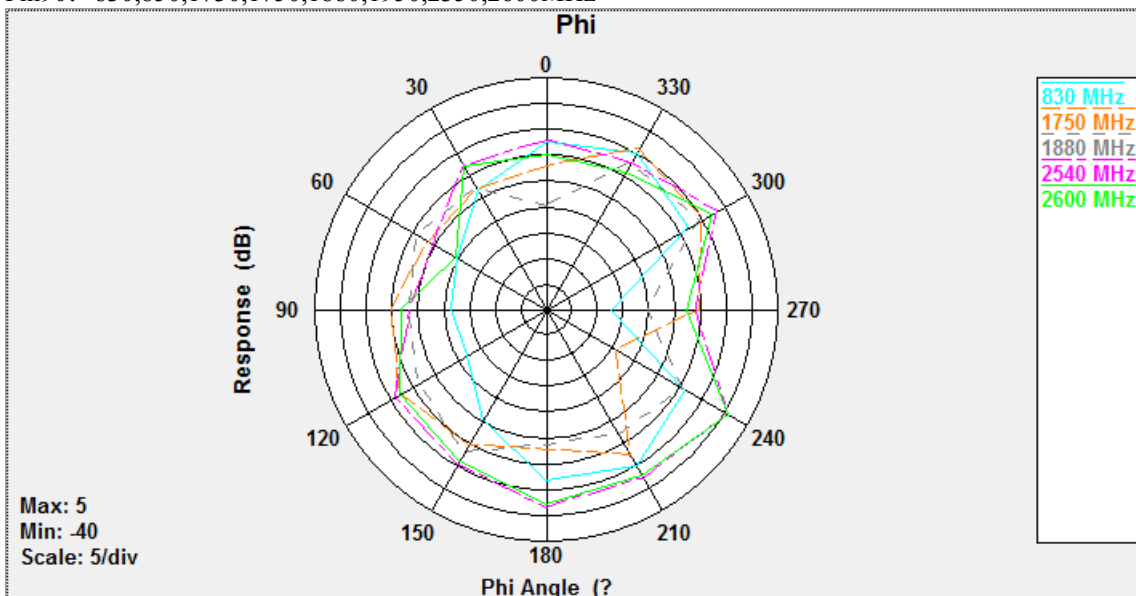


ANT2:

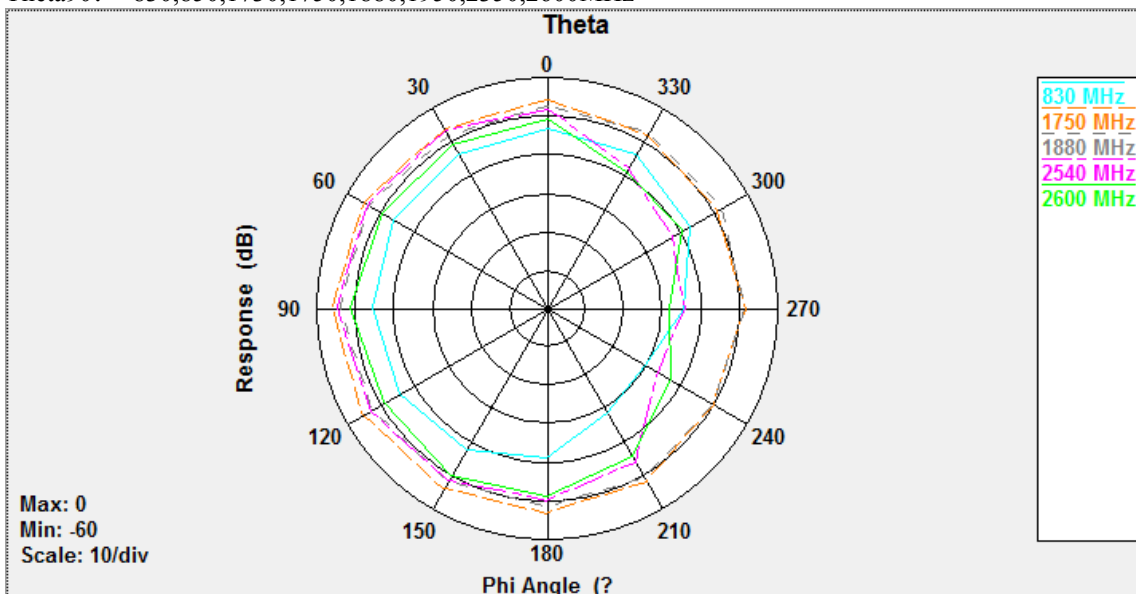
Phi0: 830,850,1730,1750,1880,1950,2350,2600MHz



Phi90: 830,850,1730,1750,1880,1950,2350,2600MHz

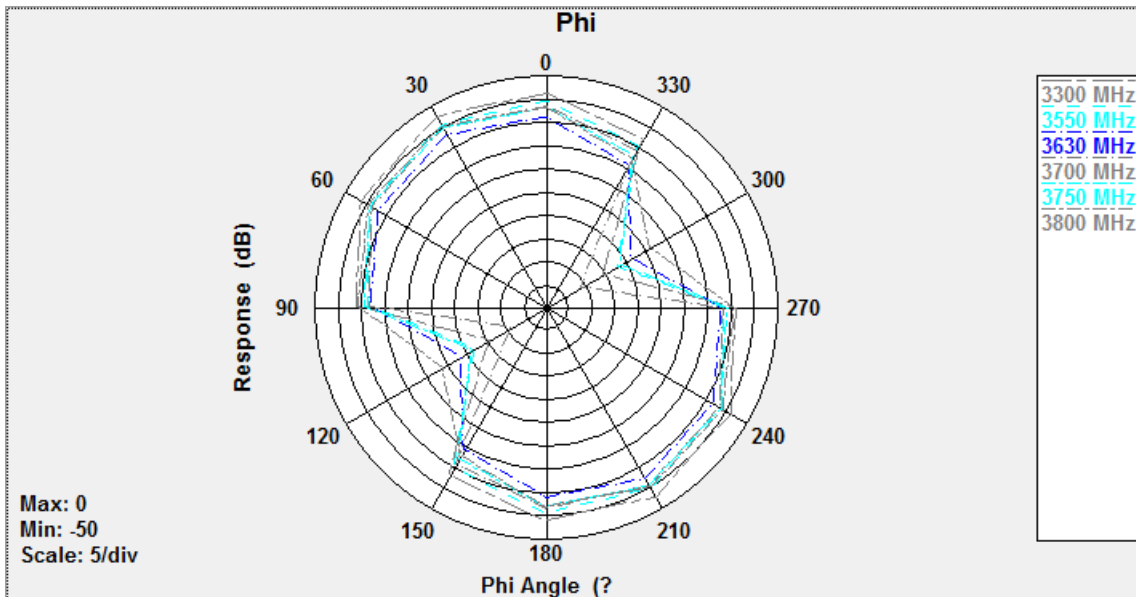


Theta90: 830,850,1730,1750,1880,1950,2350,2600MHz

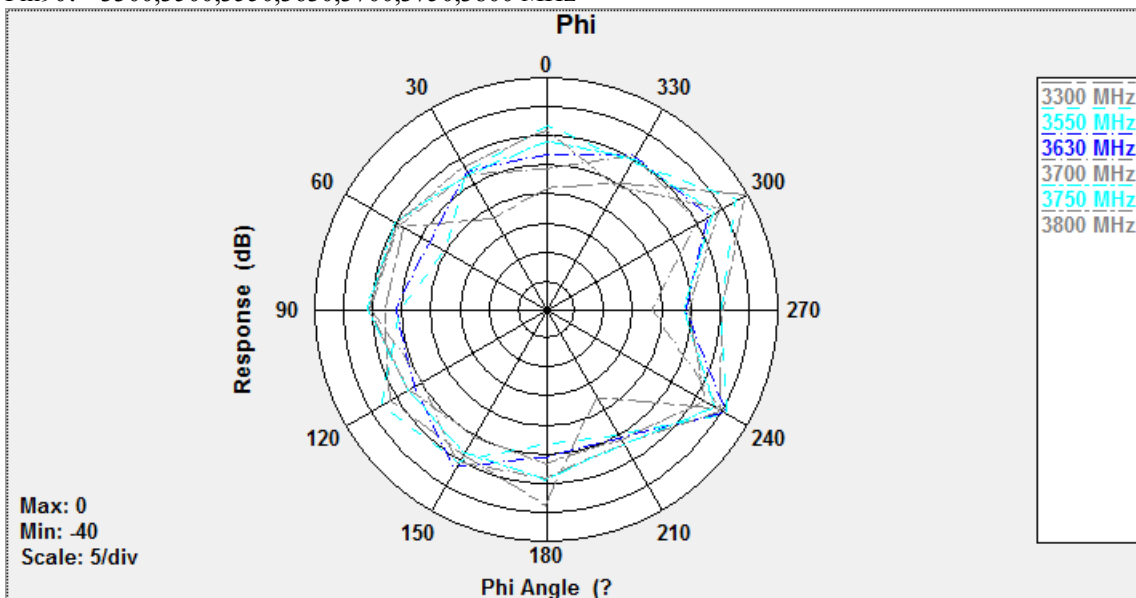


ANT3:

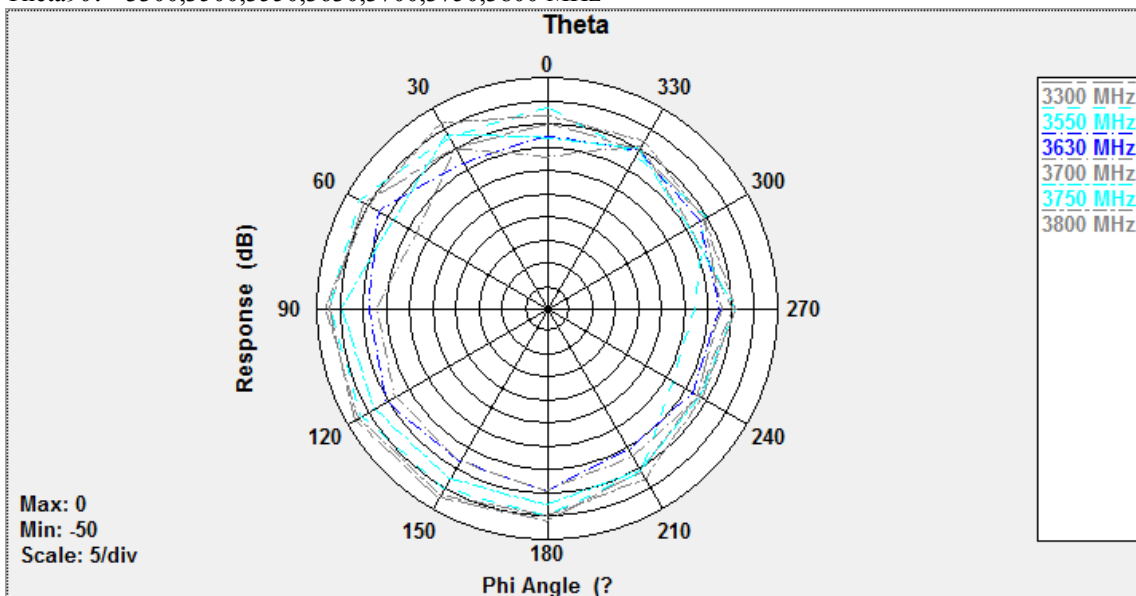
Phi0: 3300,3500,3550,3630,3700,3750,3800 MHz



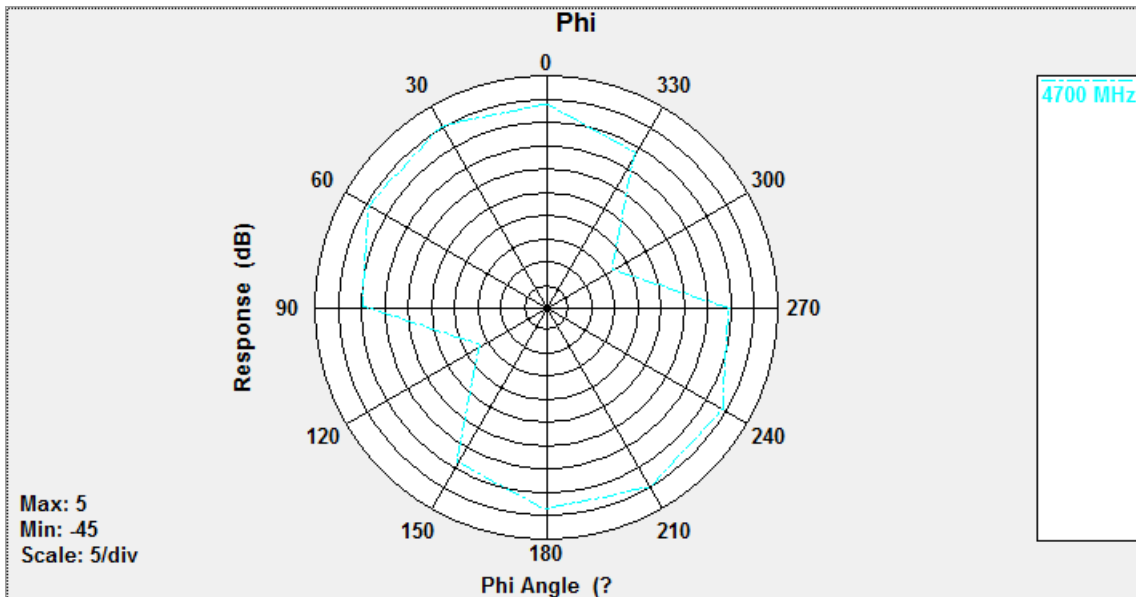
Phi90: 3300,3500,3550,3630,3700,3750,3800 MHz



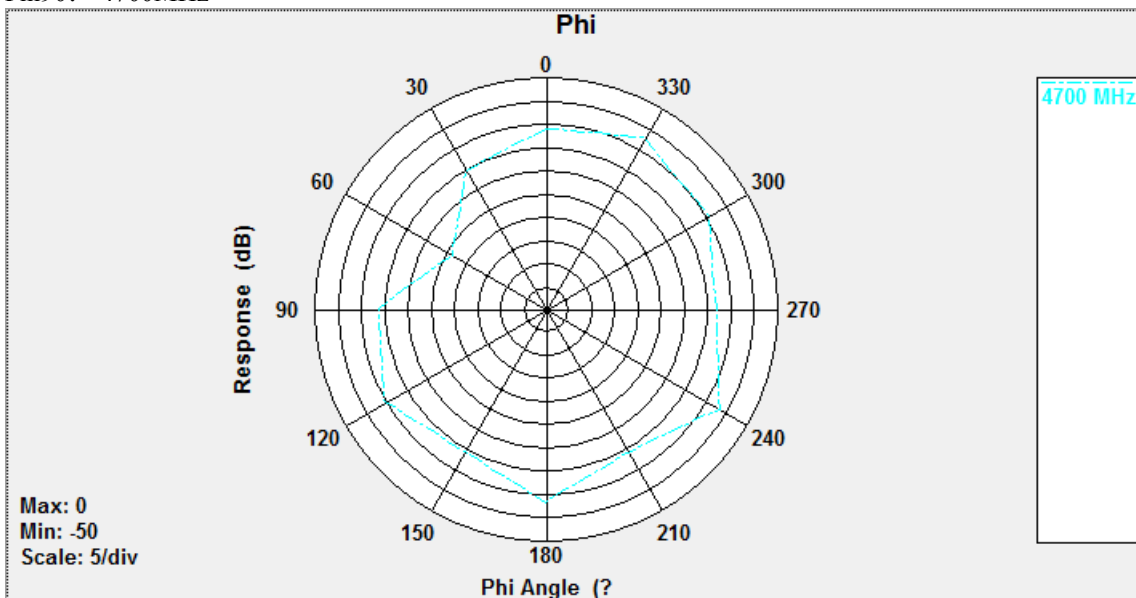
Theta90: 3300,3500,3550,3630,3700,3750,3800 MHz



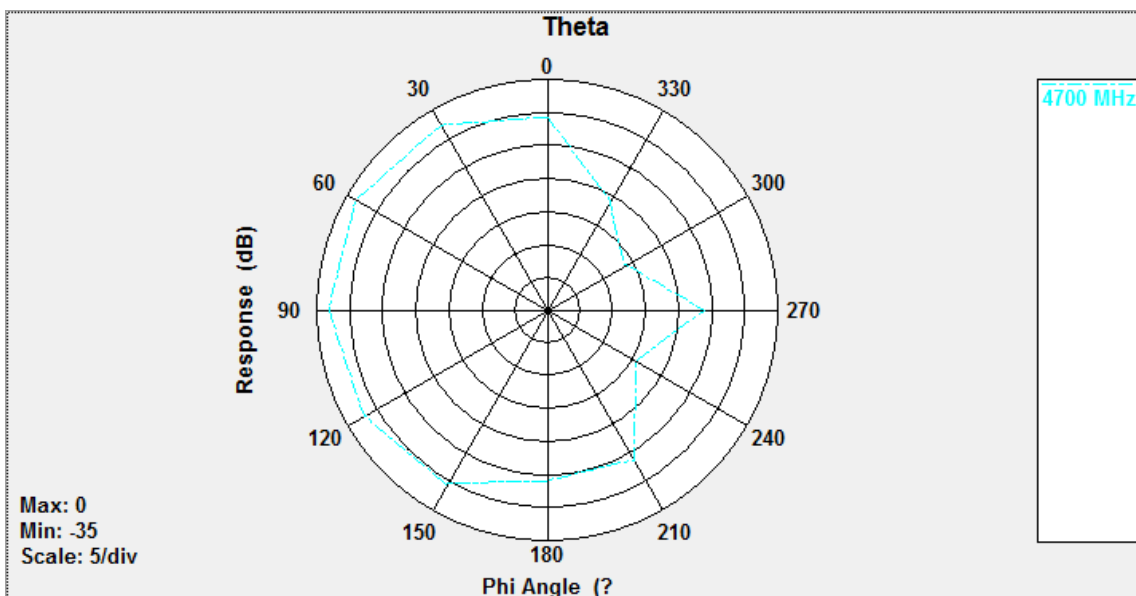
Phi0: 4700MHz



Phi90: 4700MHz



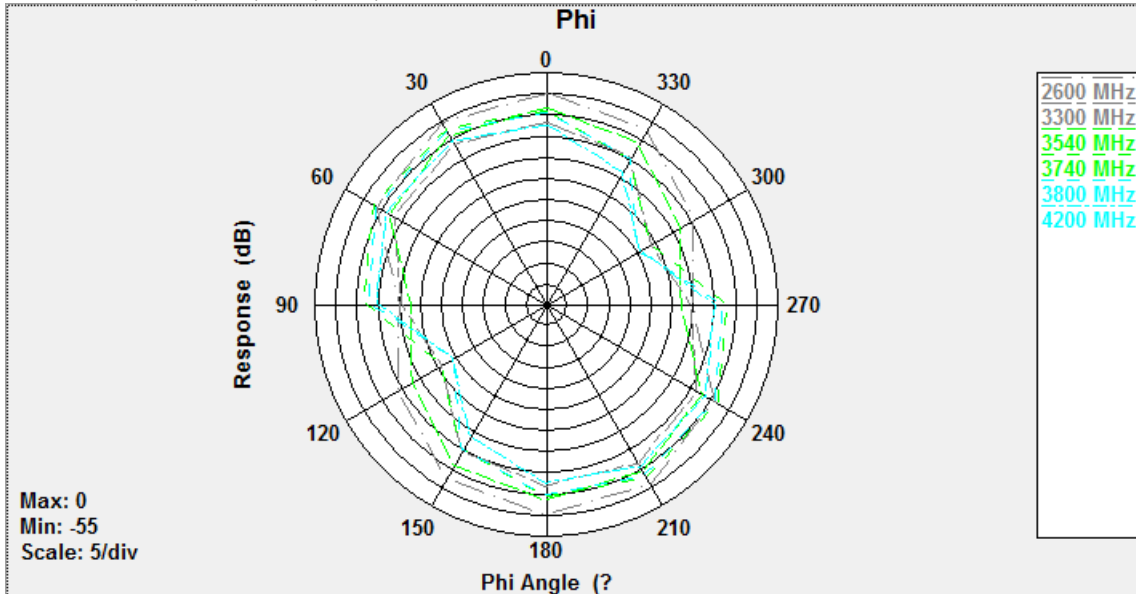
Theta90: 4700MHz



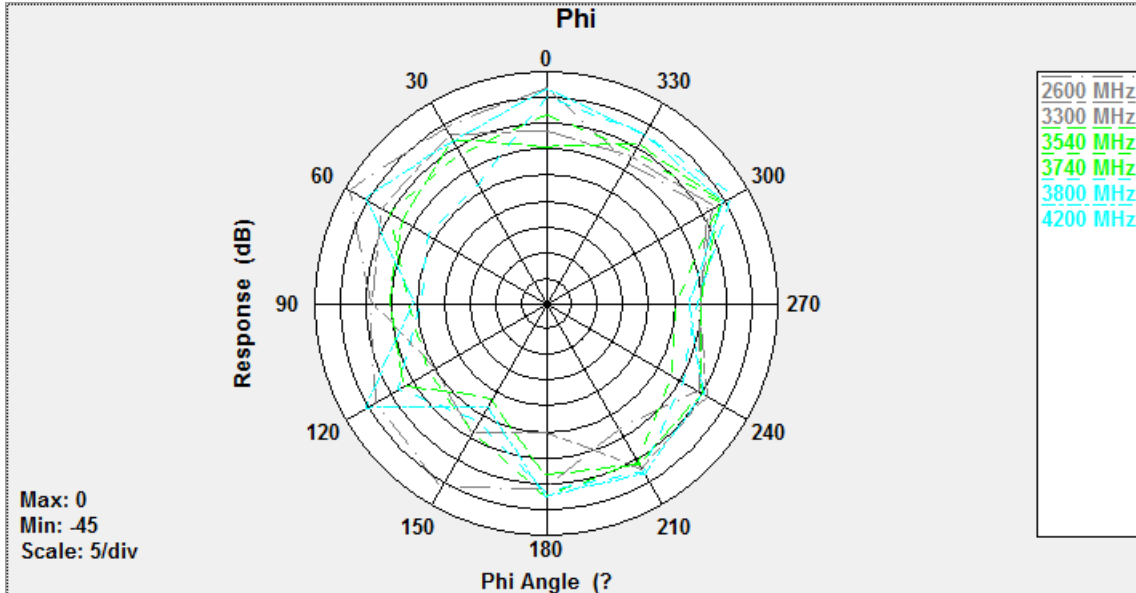
ANT4:



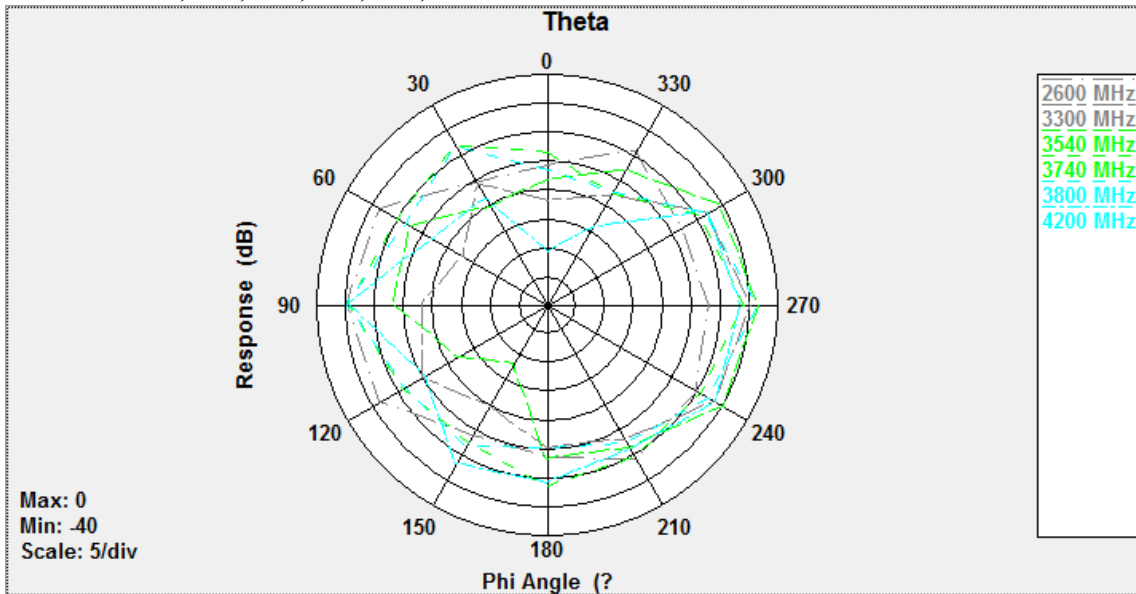
Phi0: 2600,3300,3550,3750,3800,4200MHz



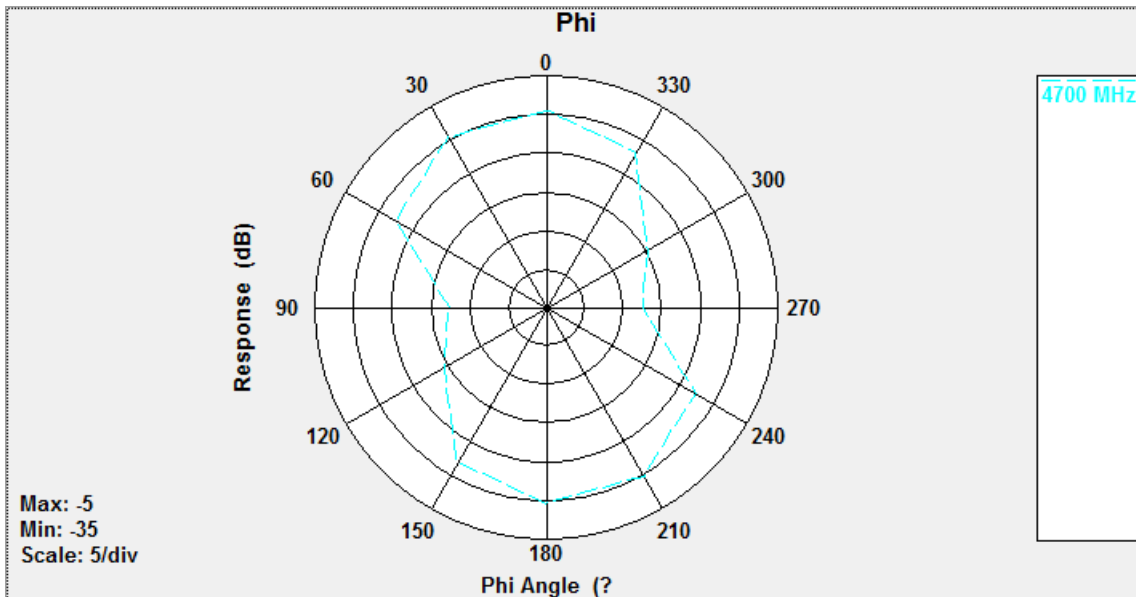
Phi90: 2600,3300,3550,3750,3800,4200MHz



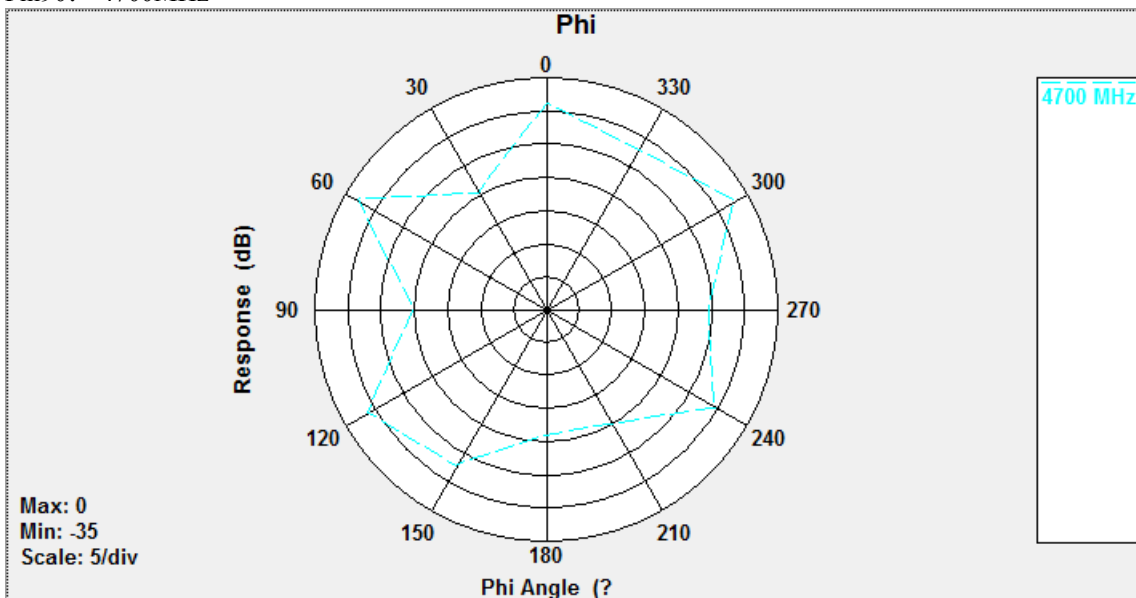
Theta90: 2600,3300,3550,3750,3800,4200MHz



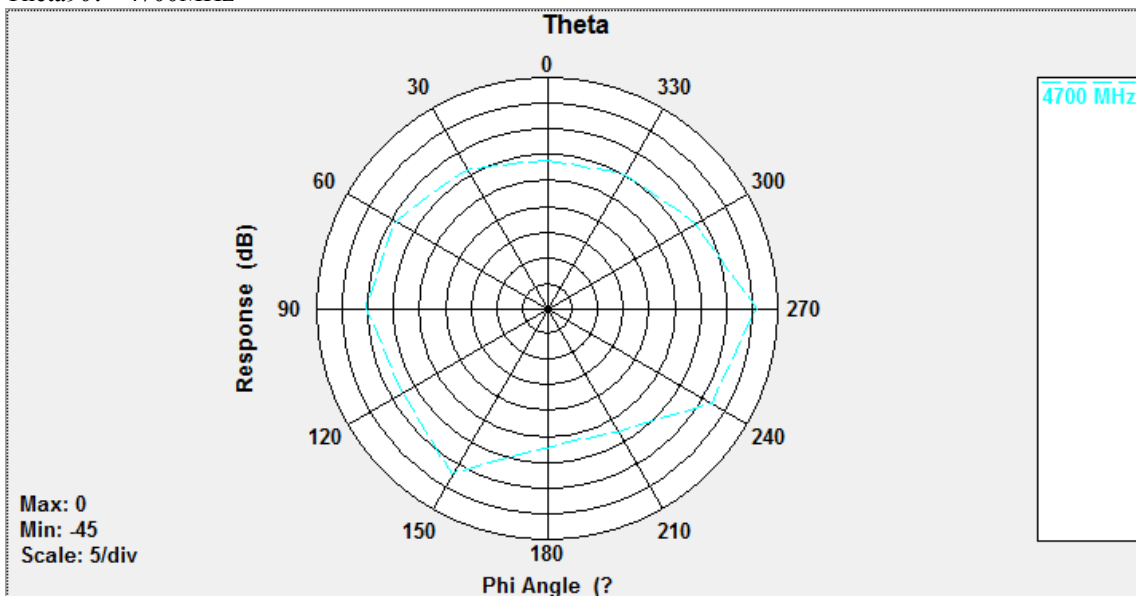
Phi0: 4700MHz



Phi90: 4700MHz

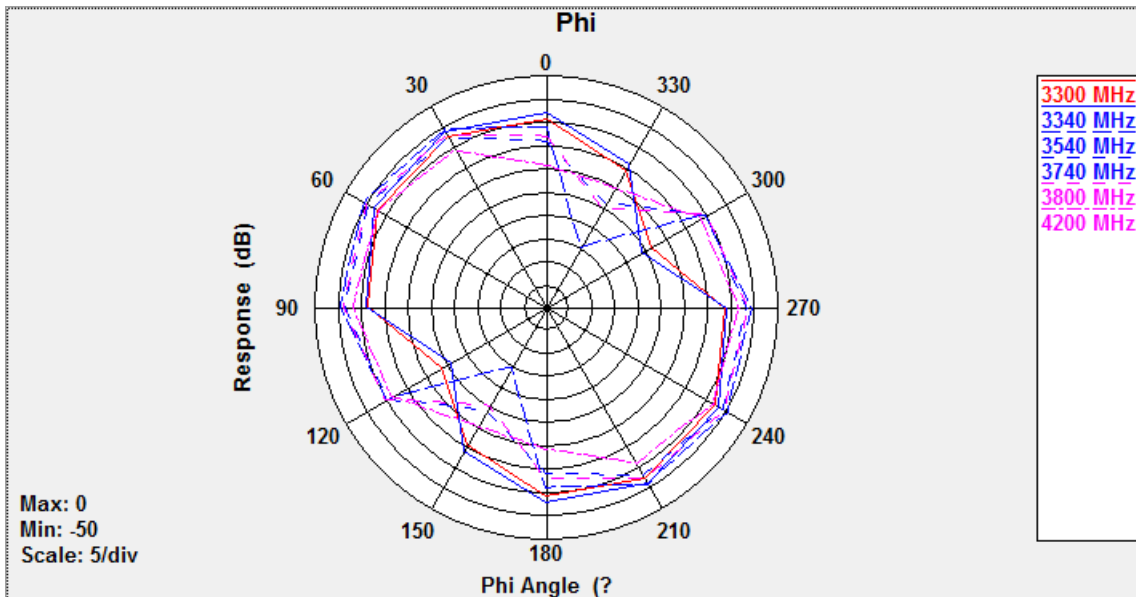


Theta90: 4700MHz

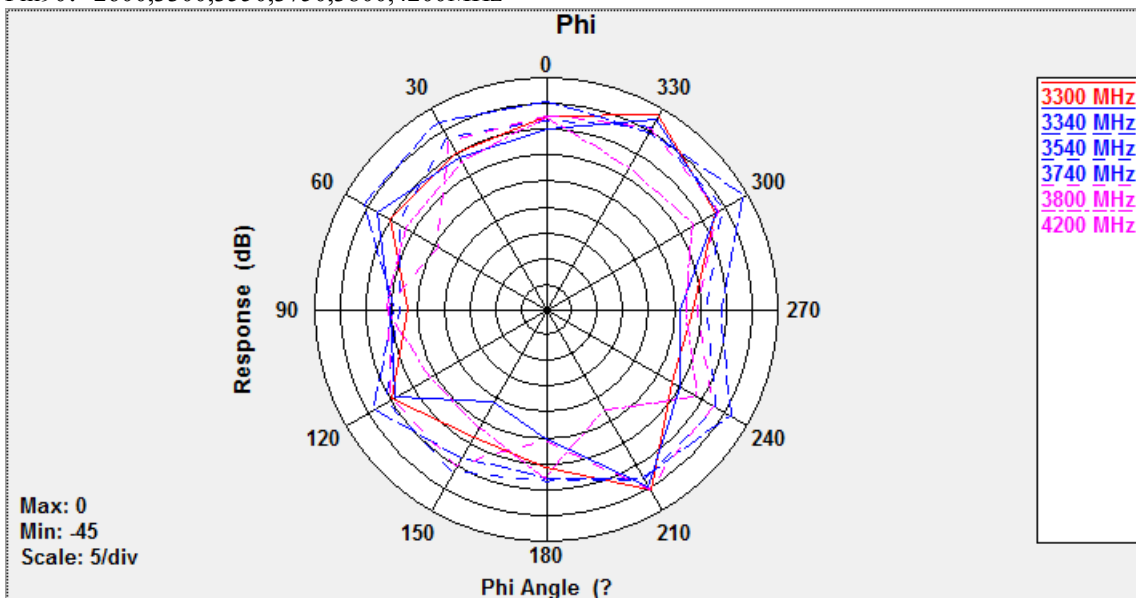


ANT5:

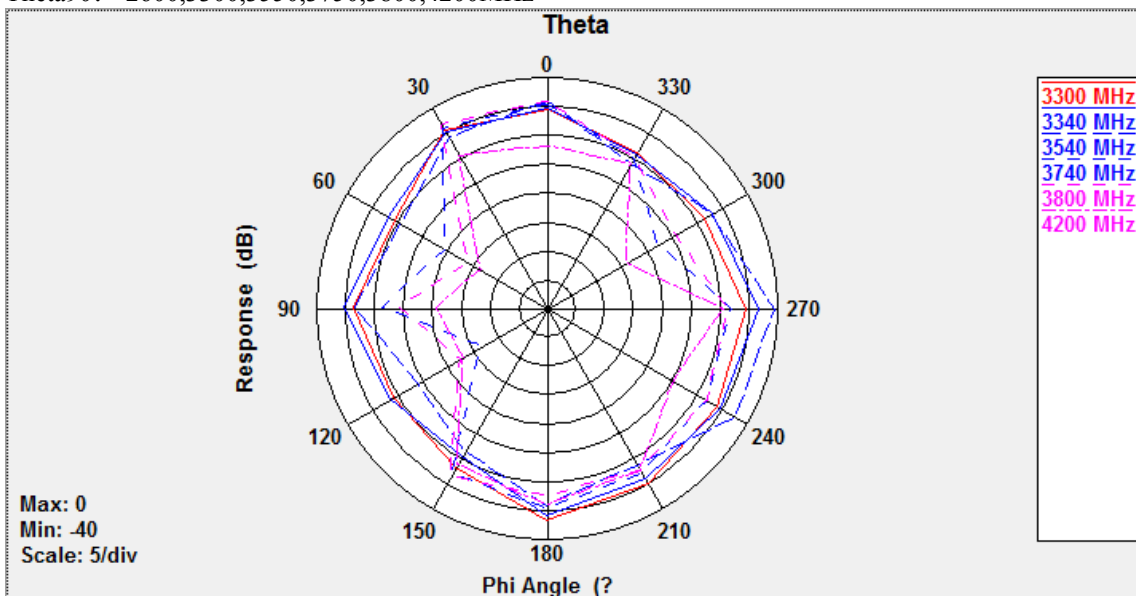
Phi0: 2600,3300,3550,3750,3800,4200MHz



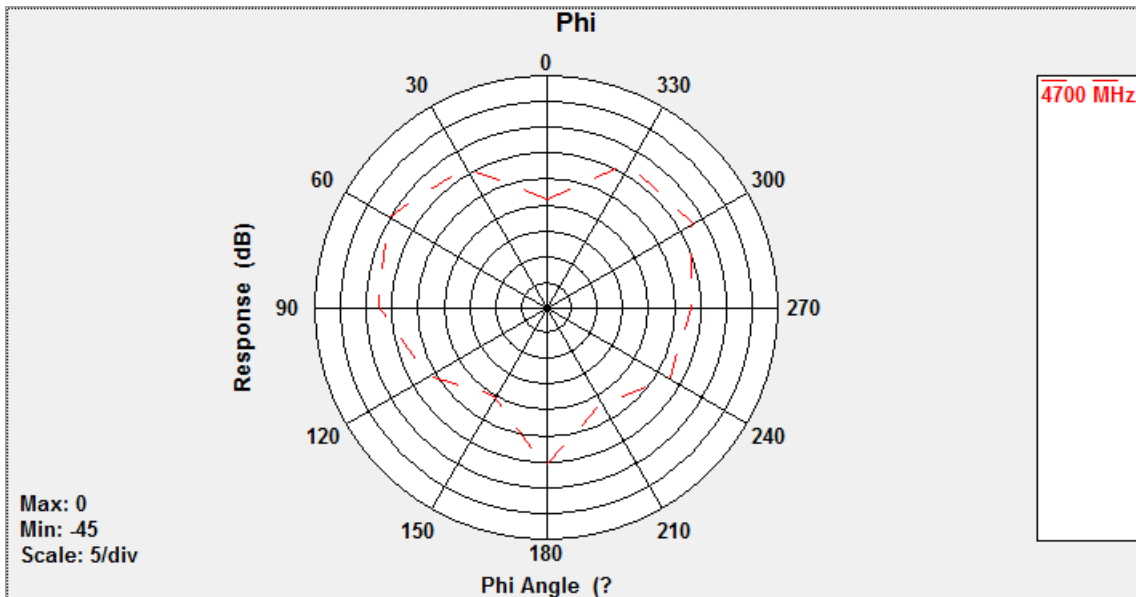
Phi90: 2600,3300,3550,3750,3800,4200MHz



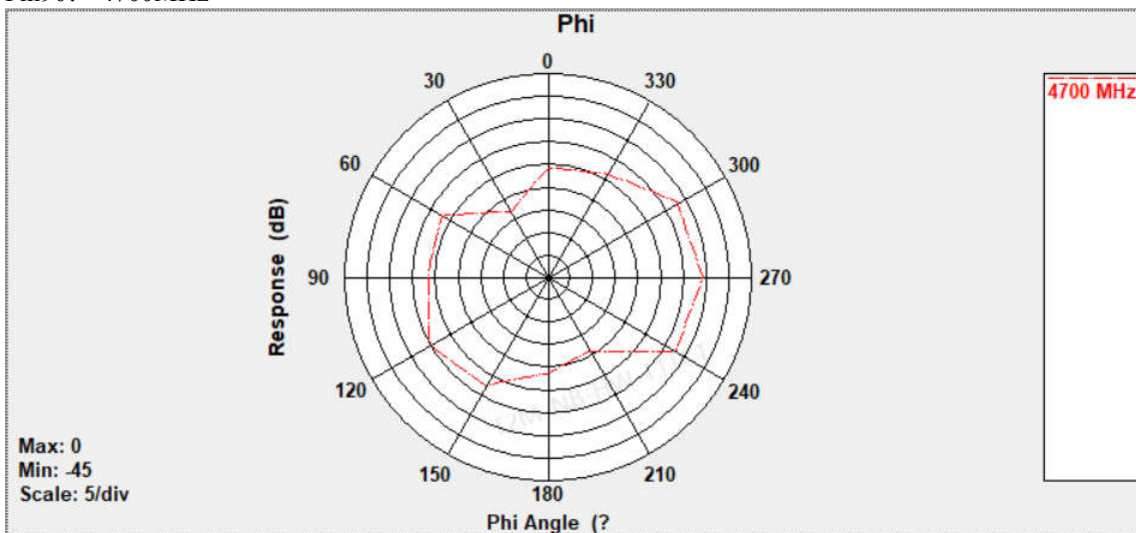
Theta90: 2600,3300,3550,3750,3800,4200MHz



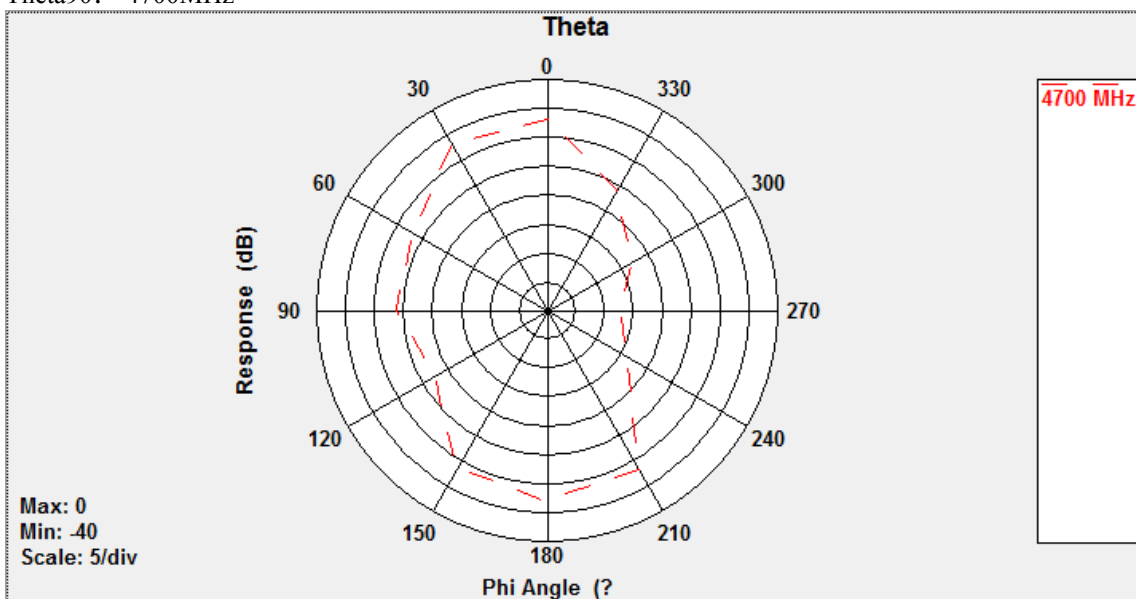
Phi0: 4700MHz



Phi90: 4700MHz

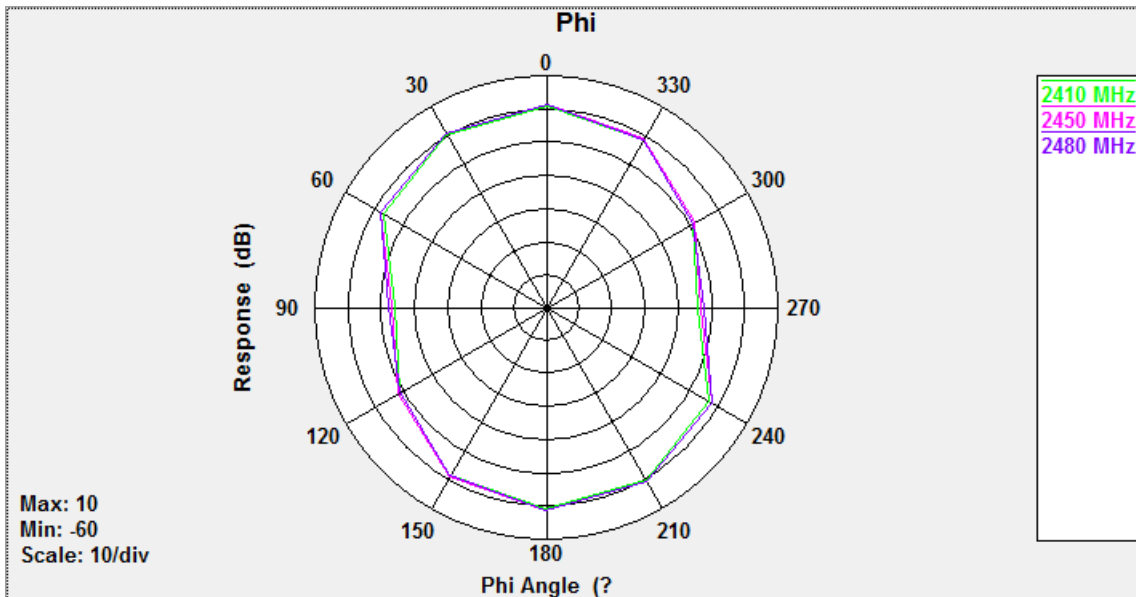


Theta90: 4700MHz

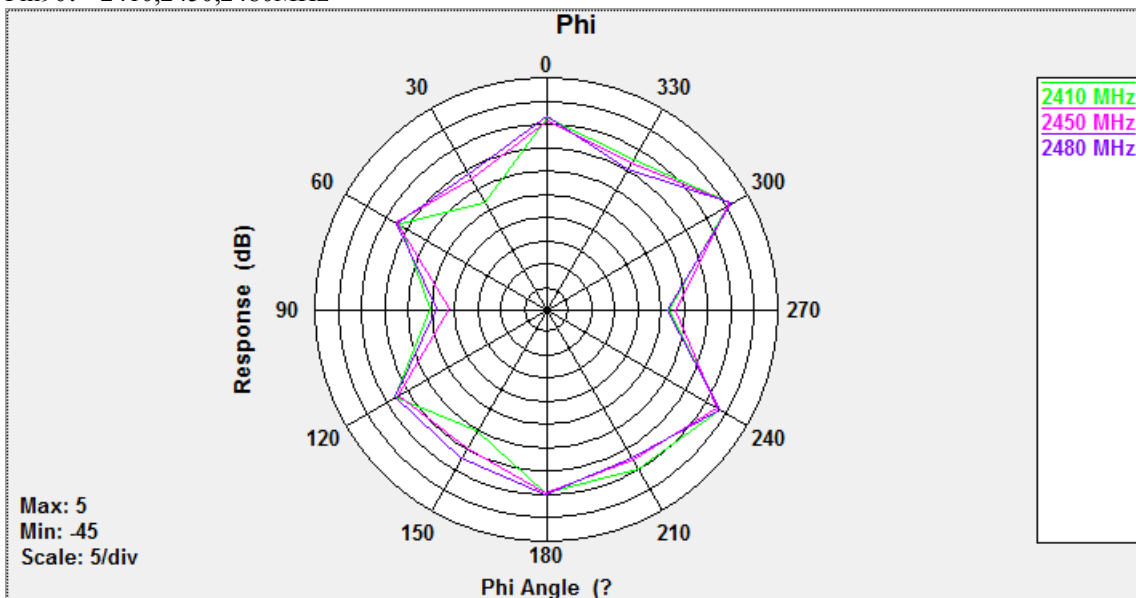


ANT6:

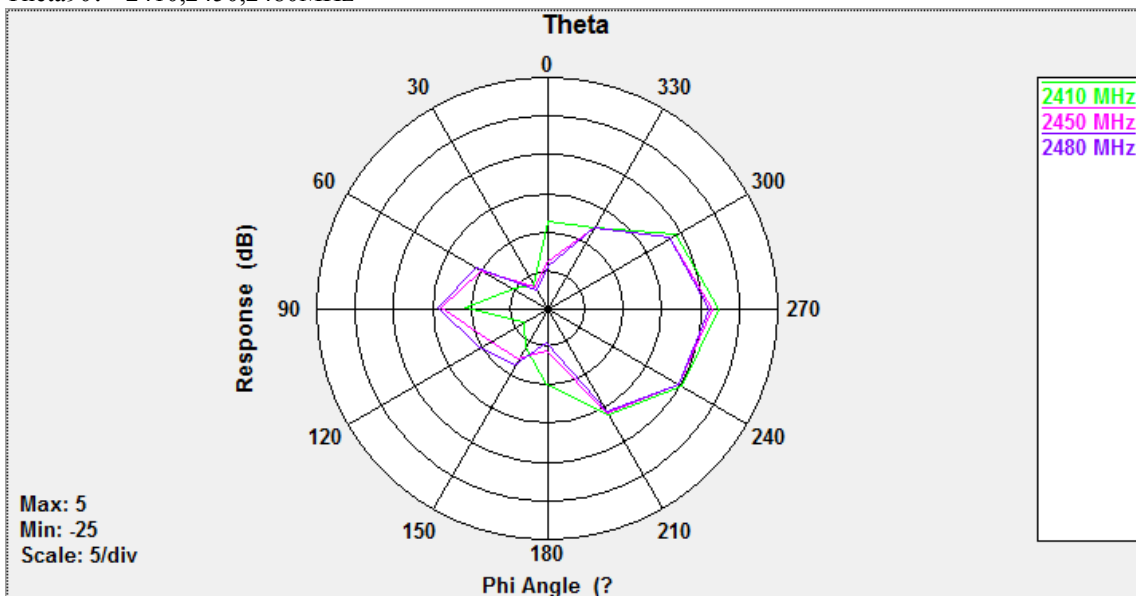
Phi0: 2410,2450,2480MHz



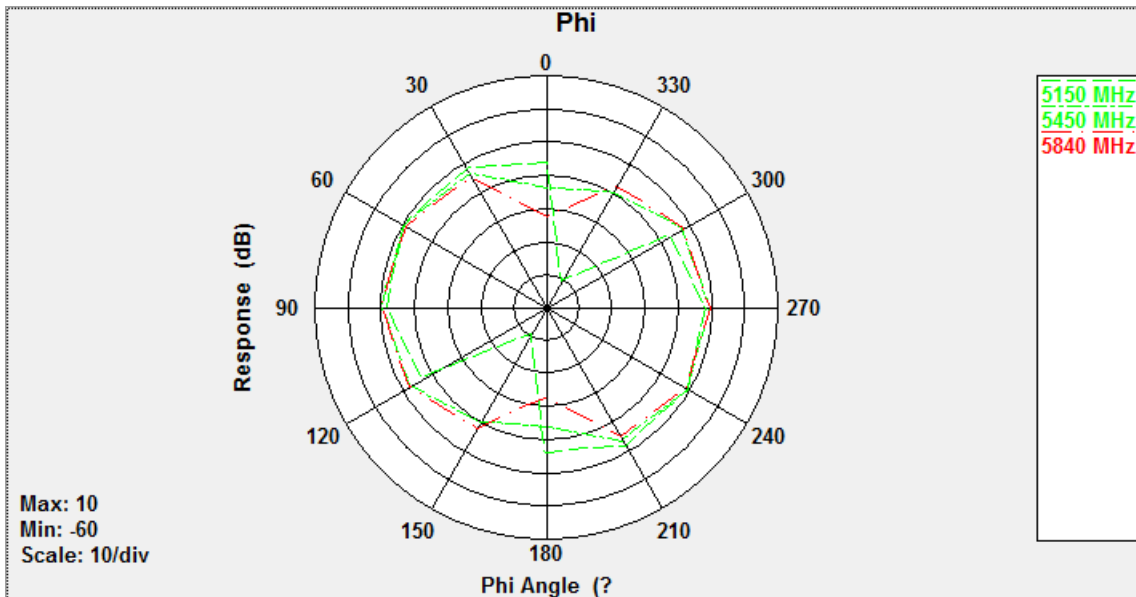
Phi90: 2410,2450,2480MHz



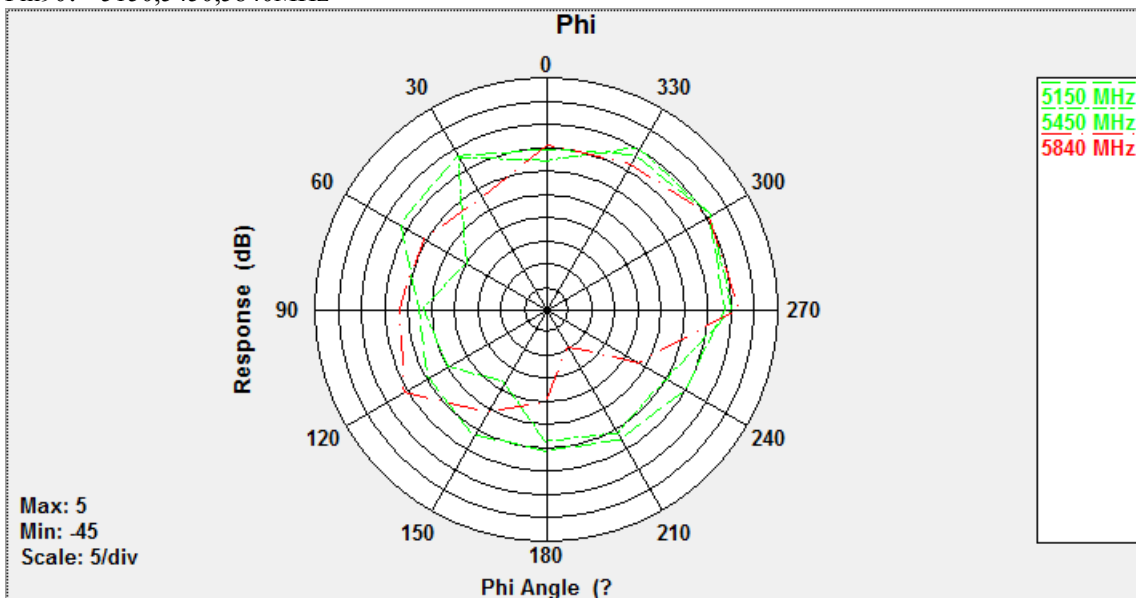
Theta90: 2410,2450,2480MHz



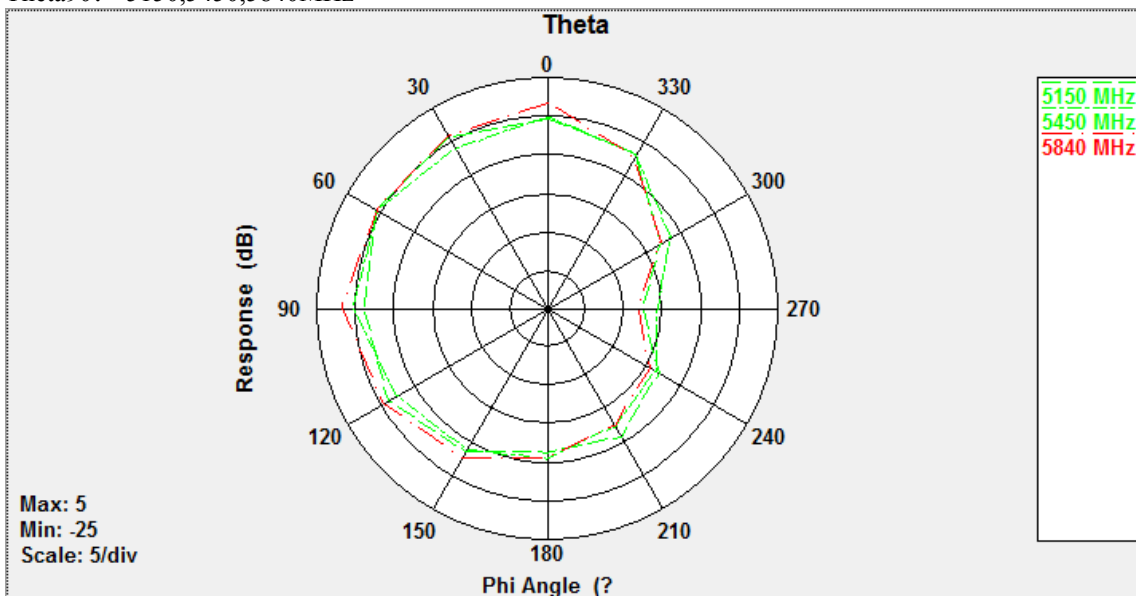
Phi0: 5150,5450,5840MHz



Phi90: 5150,5450,5840MHz

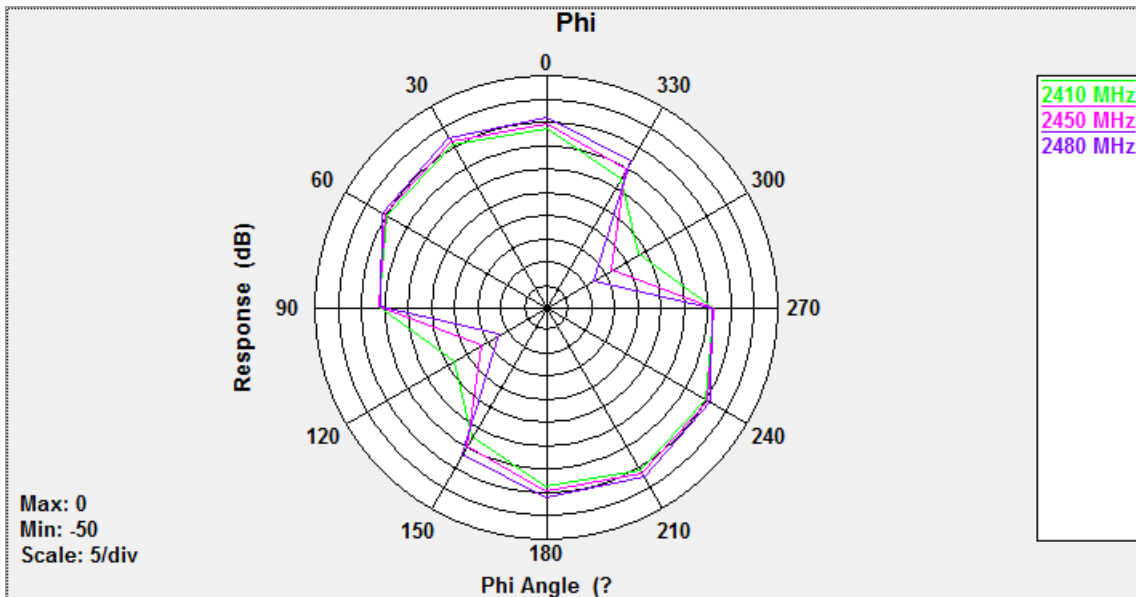


Theta90: 5150,5450,5840MHz

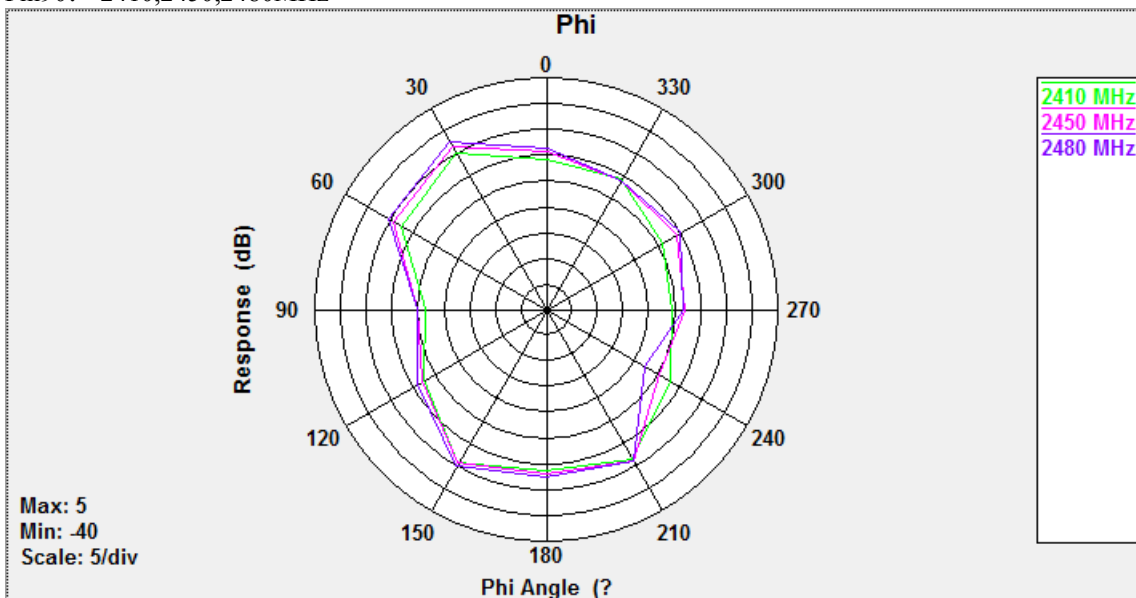


ANT7:

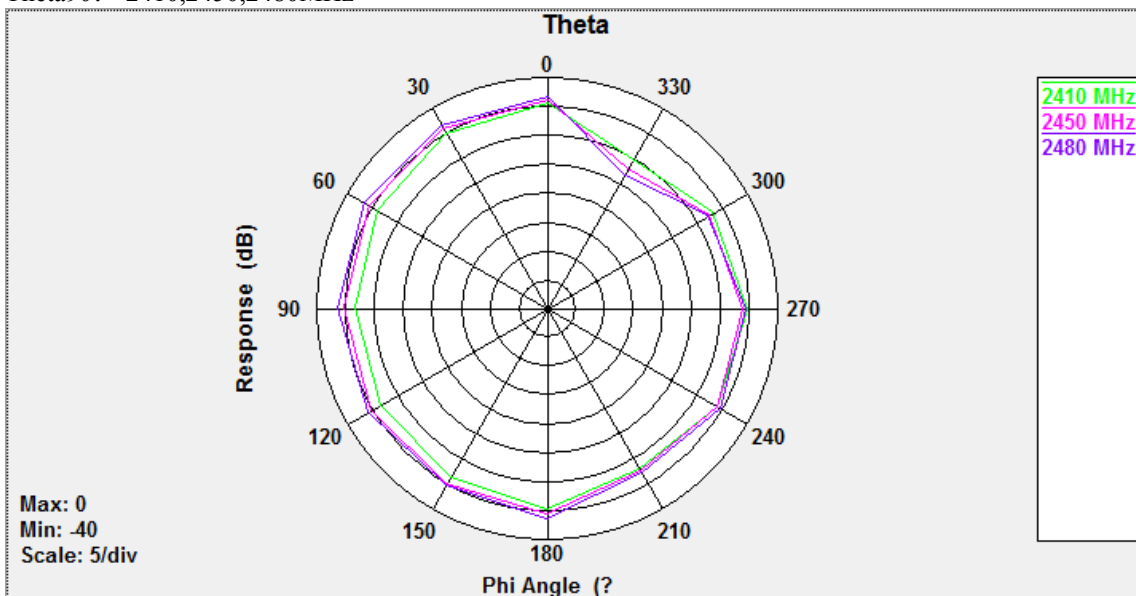
Phi0: 2410,2450,2480MHz



Phi90: 2410,2450,2480MHz

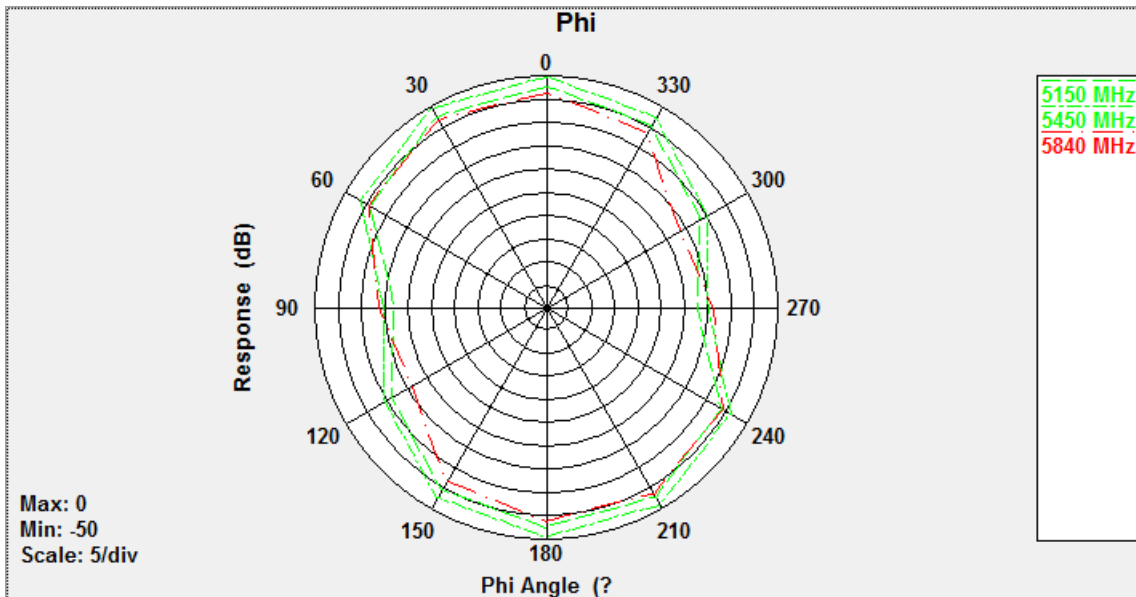


Theta90: 2410,2450,2480MHz

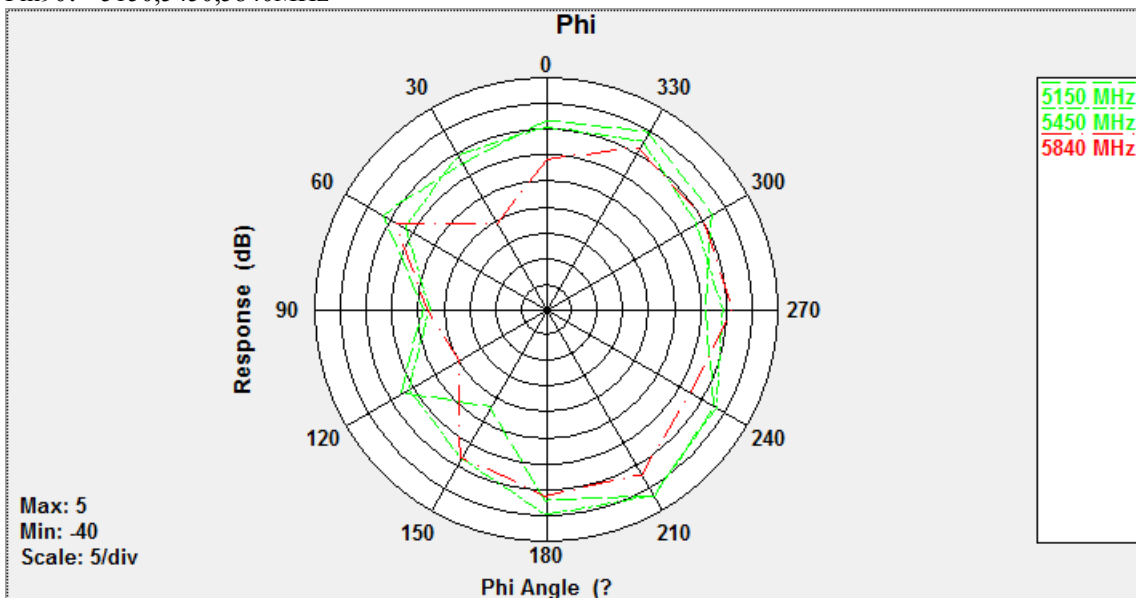


Phi0: 5150,5450,5840MHz

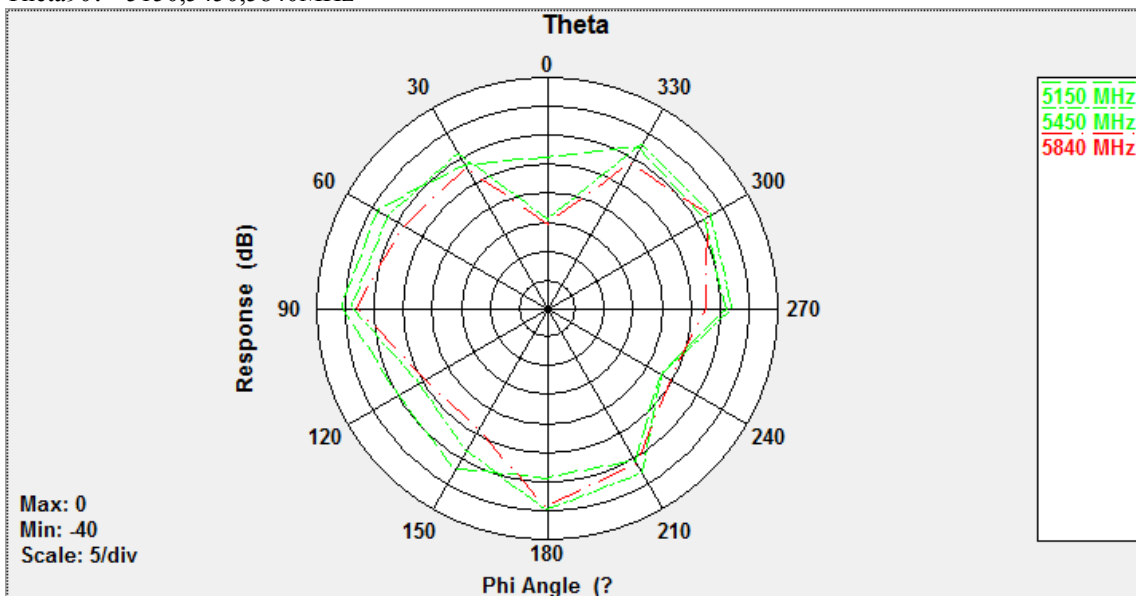




Phi90: 5150,5450,5840MHz



Theta90: 5150,5450,5840MHz





Instrument	Manufacturer	Model.NO	Calibration date	Test Date	Due Date
Base station	Anritsu	MT8820C	2022.03	2022.05	2023.03
Base station	Keysight	UXM E7515E	2022.01	2022.05	2023.01
Base station	R&S	CMW500	2022.02	2022.05	2023.02

### NFC Antenna

Antenna Dimensions: 10inch Enlarged Area : 2700 mm<sup>2</sup>

