

System Check_Head_13MHz

DUT: CLA-13-1011

Communication System: CW; Frequency: 13 MHz; Duty Cycle: 1:1

Medium: HSL_4~250_220617 Medium parameters used: $f = 13.5$ MHz; $\sigma = 0.728$ S/m; $\epsilon_r = 53.77$; $\rho = 1000$ kg/m³

Ambient Temperature : 23.5 °C ; Liquid Temperature : 22.5 °C

DASY5 Configuration

- Probe: EX3DV4 - SN3925; ConvF(18.24, 18.24, 18.24) @ 13 MHz; Calibrated: 2022/4/29
- Sensor-Surface: 1.4mm (Mechanical Surface Detection)
- Electronics: DAE4 Sn376; Calibrated: 2021/11/22
- Phantom: ELI v4.0_Mid; Type: QDOVA001AA; Serial: TP:1026
- Measurement SW: DASY52, Version 52.10 (4); SEMCAD X Version 14.6.14 (7483)

Pin=1W/Area Scan (81x81x1): Interpolated grid: dx=1.500 mm, dy=1.500 mm

Maximum value of SAR (interpolated) = 0.893 W/kg

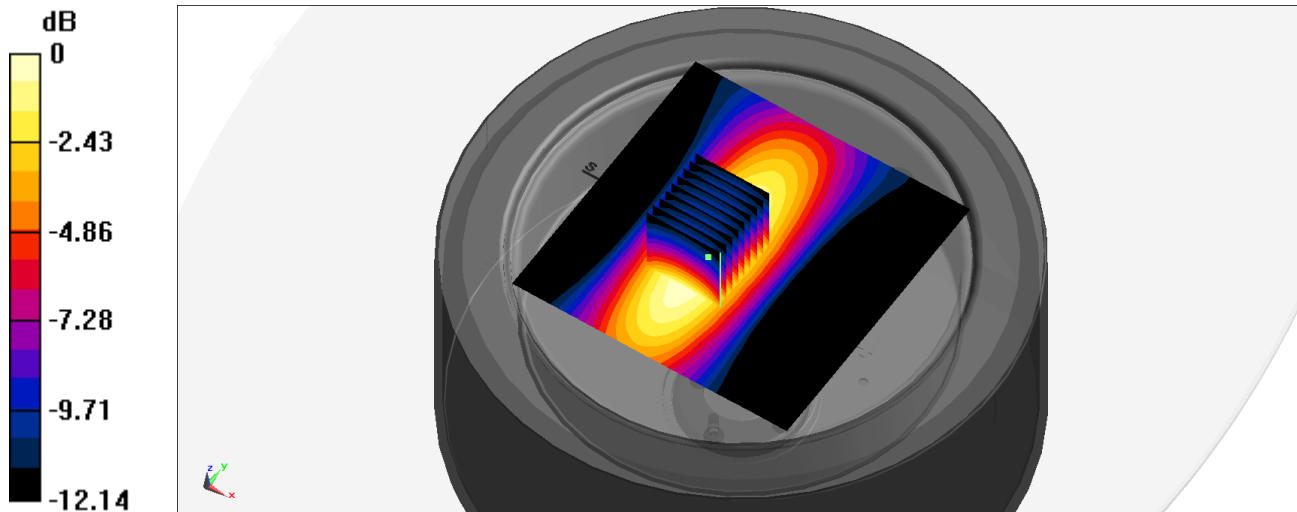
Pin=1W/Zoom Scan (9x9x8)/Cube 0: Measurement grid: dx=4mm, dy=4mm, dz=1.4mm

Reference Value = 31.74 V/m; Power Drift = -0.05 dB

Peak SAR (extrapolated) = 1.21 W/kg

SAR(1 g) = 0.589 W/kg; SAR(10 g) = 0.369 W/kg

Maximum value of SAR (measured) = 0.878 W/kg



0 dB = 0.878 W/kg = -0.57 dBW/kg