

System Check_Head_835MHz

Communication System: ; Frequency: 835.0

Medium: HSL_850_220809. Medium parameters used: $f = 835.0$ MHz; $\sigma = 0.893$ S/m; $\epsilon_r = 43.1$

Ambient Temperature: 23.5°C; Liquid Temperature: 22.5°C

DASY6 Configuration:

- Probe: EX3DV4 - SN3728; ConvF(9.43, 9.43, 9.43); Calibrated: 2022-03-02
- Sensor-Surface: 1.4 mm
- Electronics: DAE4 Sn778; Calibrated: 2022-05-30
- Phantom: Twin-SAM V4.0 (30deg probe tilt); Serial: 1488; Section: Flat
- Measurement Software: cDASY6 V6.6.0.13926
- UID: CW, 0--
- MAIA: Area Scan: N/A; Zoom Scan: N/A

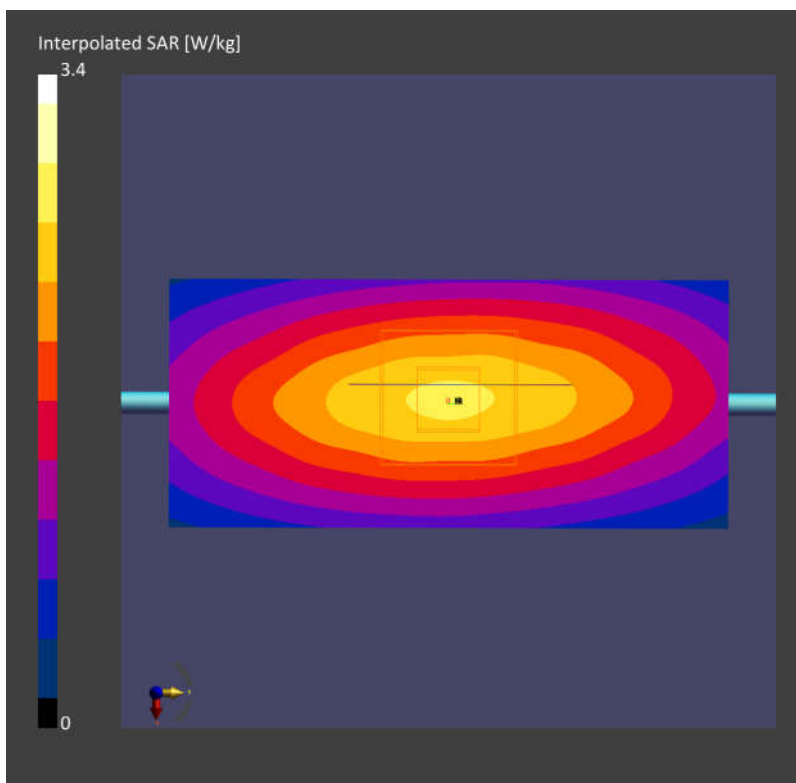
Area Scan (40.0 mm x 90.0 mm): Measurement Grid: 10.0 mm x 15.0 mm

SAR (1g) = 2.35 W/kg; SAR (10g) = 1.57 W/kg;

Zoom Scan (32.0 mm x 32.0 mm x 30.0 mm): Measurement Grid: 6.0 mm x 6.0 mm x 1.5 mm

Power Drift = -0.09 dB

SAR (1g) = 2.38 W/kg; SAR (10g) = 1.56 W/kg;



System Check_Head_1900MHz

Communication System: ; Frequency: 1900.0

Medium: HSL_1900_220809. Medium parameters used: $f= 1900.0$ MHz; $\sigma= 1.42$ S/m; $\epsilon_r = 41.0$

Ambient Temperature: 23.5°C; Liquid Temperature: 22.5°C

DASY6 Configuration:

- Probe: EX3DV4 - SN3728; ConvF(8.00, 8.00, 8.00); Calibrated: 2022-03-02
- Sensor-Surface: 1.4 mm
- Electronics: DAE4 Sn778; Calibrated: 2022-05-30
- Phantom: Twin-SAM V4.0 (30deg probe tilt); Serial: 1488; Section: Flat
- Measurement Software: cDASY6 V6.6.0.13926
- UID: CW, 0--
- MAIA: Area Scan: N/A; Zoom Scan: N/A

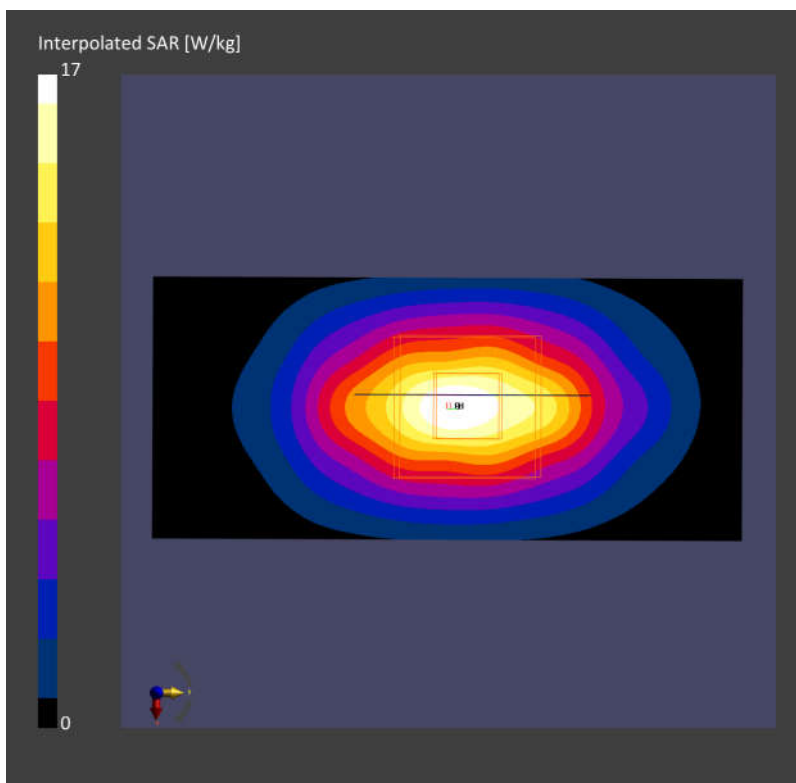
Area Scan (40.0 mm x 90.0 mm): Measurement Grid: 10.0 mm x 15.0 mm

SAR (1g) = 9.15 W/kg; SAR (10g) = 4.73 W/kg;

Zoom Scan (32.0 mm x 32.0 mm x 30.0 mm): Measurement Grid: 6.0 mm x 6.0 mm x 1.5 mm

Power Drift = 0.11 dB

SAR (1g) = 9.21 W/kg; SAR (10g) = 4.80 W/kg;



System Check_Head_2600MHz

Communication System: ; Frequency: 2600.0

Medium: HSL_2600_220809. Medium parameters used: $f = 2600.0$ MHz; $\sigma = 1.94$ S/m; $\epsilon_r = 38.4$

Ambient Temperature: 23.5°C; Liquid Temperature: 22.5°C

DASY6 Configuration:

- Probe: EX3DV4 - SN3728; ConvF(7.26, 7.26, 7.26); Calibrated: 2022-03-02
- Sensor-Surface: 1.4 mm
- Electronics: DAE4 Sn778; Calibrated: 2022-05-30
- Phantom: Twin-SAM V4.0 (30deg probe tilt); Serial: 1488; Section: Flat
- Measurement Software: cDASY6 V6.6.0.13926
- UID: CW,0--
- MAIA: Area Scan: N/A; Zoom Scan: N/A

Area Scan (40.0 mm x 96.0 mm): Measurement Grid: 10.0 mm x 12.0 mm

SAR (1g) = 14.22 W/kg; SAR (10g) = 6.31 W/kg;

Zoom Scan (30.0 mm x 30.0 mm x 30.0 mm): Measurement Grid: 5.0 mm x 5.0 mm x 1.5 mm

Power Drift = -0.07 dB

SAR (1g) = 14.23 W/kg; SAR (10g) = 6.42 W/kg;

