

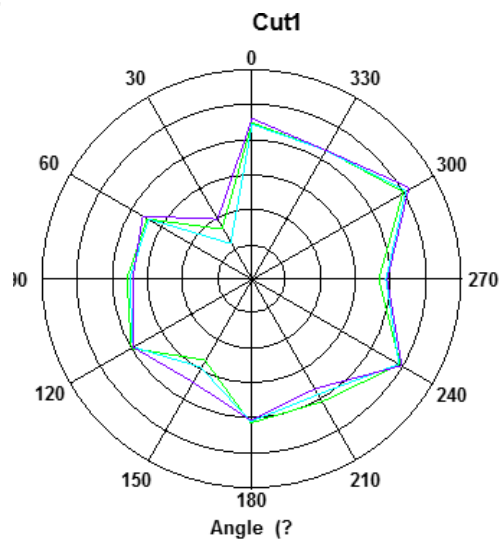
Antenna Report

Company	Zebra Technologies Corporation
Model Name	10" NA wwan ET45BB
Type	WLAN5.8GHz/5.1GHz/2.4GHz equipment
Support Feature ①	WLAN: BT5.1+BLE; 2.4GHz 802.11b/g/n HT20/40 5GHz 802.11a/n/ac HT20/40/80
Peak Gain ②	BT: 2400~2483.5MHz: 0.9 dBi WLAN: ANT6: 2400~2483.5MHz: 0.9 dBi 5150~5250MHz: 1.8 dBi 5250~5350MHz: 2.3 dBi 5470~5725MHz:2.1 dBi 5725~5850MHz:1.8 dBi ANT7: 2400~2483.5MHz: 1.2 dBi 5150~5250MHz: 1.4 dBi 5250~5350MHz: 1.4 dBi 5470~5725MHz:-0.1 dBi 5725~5850MHz:-0.9dBi

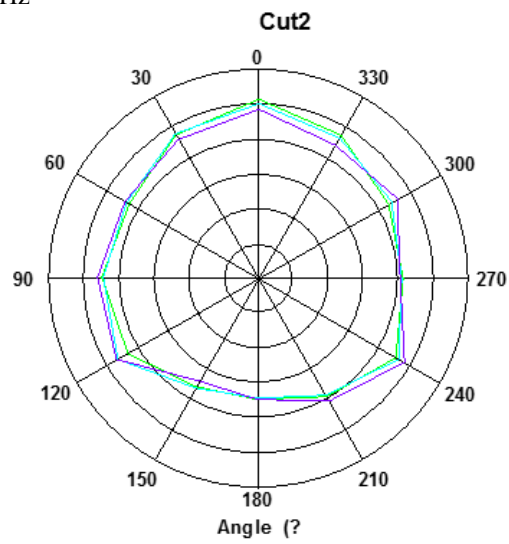
Test Site: SATIMO

ANT6:

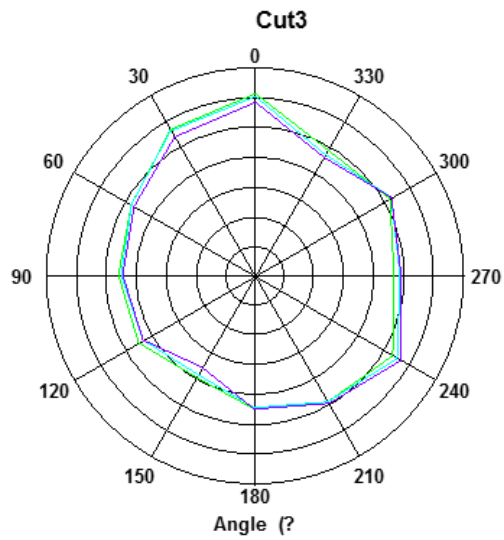
Phi0: 2410,2450,2480MHz



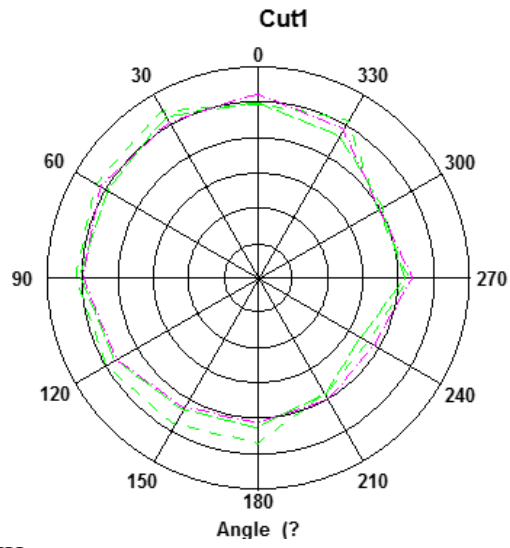
Phi90: 2410,2450,2480MHz



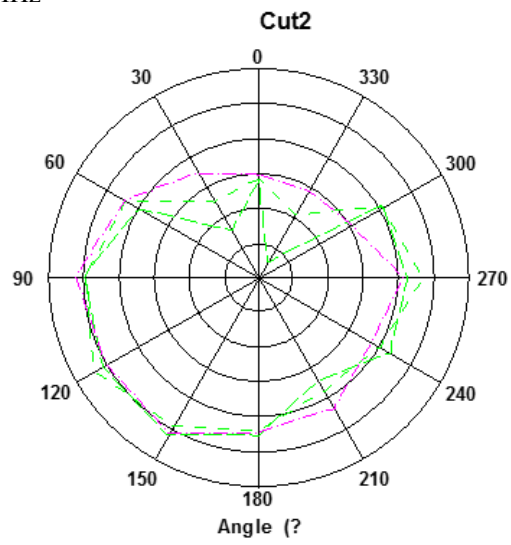
Theta90: 2410,2450,2480MHz



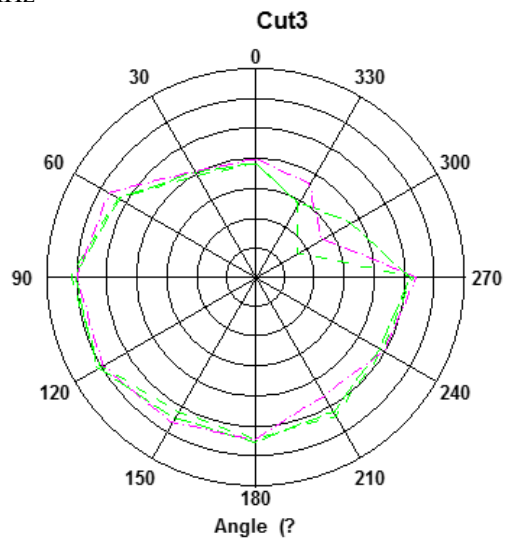
Phi0: 5150,5450,5850MHz



Phi90: 5150,5450,5850MHz

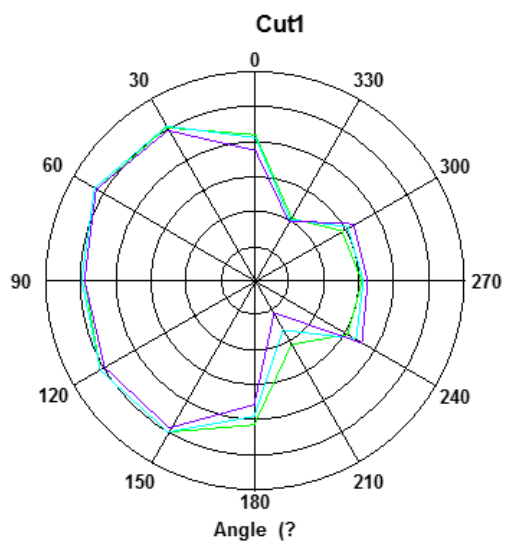


Theta90: 5150,5450,5850MHz

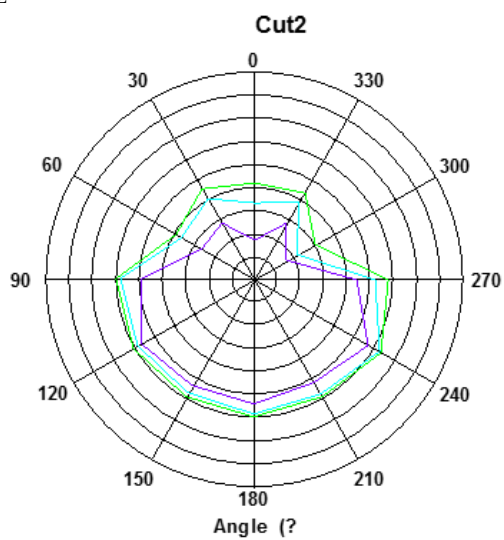


ANT7:

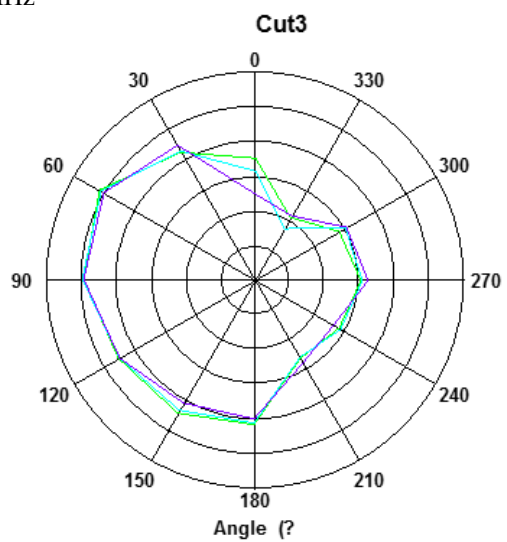
Phi0: 2410,2450,2480MHz



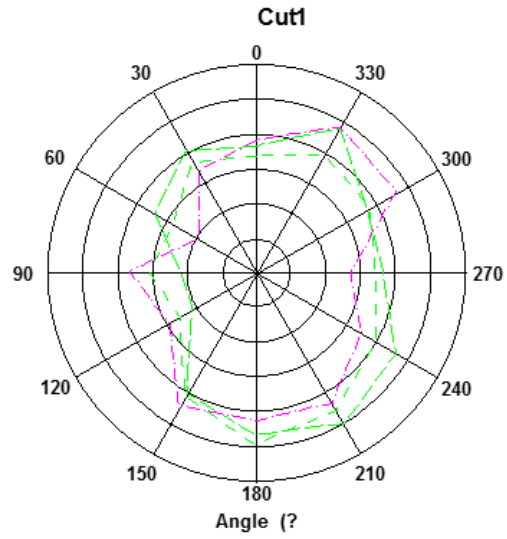
Phi90: 2410,2450,2480MHz



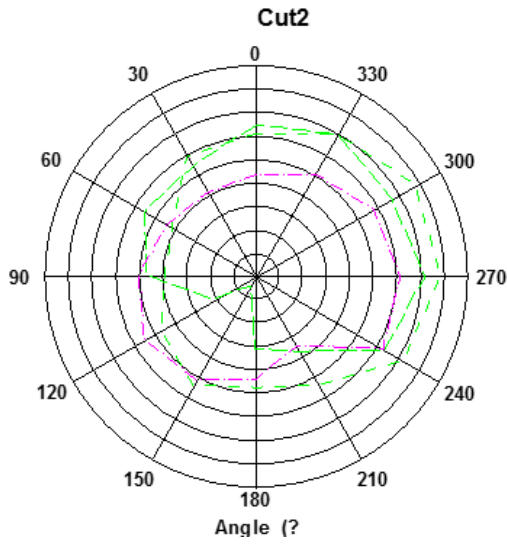
Theta90: 2410,2450,2480MHz



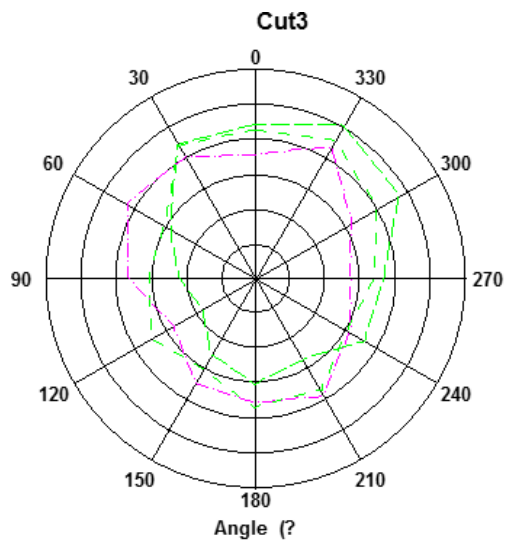
Phi0: 5150,5450,5850MHz



Phi90: 5150,5450,5850MHz



Theta90: 5150,5450,5850MHz



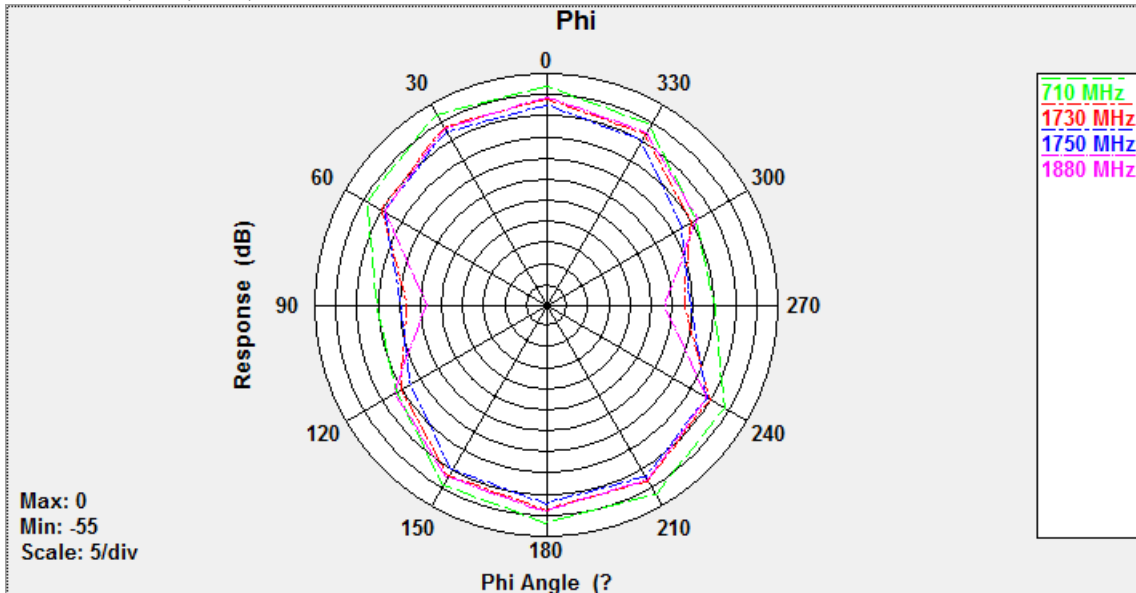
Company	Zebra Technologies Corporation																																														
Model	ET45BB																																														
Type	Antenna type : IFA																																														
Support Feature ①	WWAN NA: <table border="1" data-bbox="336 342 1430 1048"> <thead> <tr> <th>Antenna</th> <th>Mode</th> <th>TX Band</th> <th>RX Band</th> </tr> </thead> <tbody> <tr> <td>ANT0 TRX1-LMH</td> <td>LB/MB/HB</td> <td>LB:B5/12/13/14/17/26/71 N5/12/13/14/71 MB: B2/4/25/66 N2/25/66 HB: LTE:B7/38 NR:N7/38</td> <td>LB:B5/12/13/14/17/26/71 N5/12/13/14/71 MB: B2/4/25/66 N2/25/66 HB: LTE:B7/38/41 NR:N7/38/41</td> </tr> <tr> <td>ANT1 DRX-LHU</td> <td>LB/HB/UHB</td> <td>B41, N41/N77/N78</td> <td>LB:B5/12/13/14/17/26/71 N5/12/13/14/71 HB: B7/38/41 N7/38/41 UHB:B48 N48/77/78</td> </tr> <tr> <td>ANT2 TRX0_LMH</td> <td>LB/MB/HB</td> <td>LB: B5 N5 MB: B2/4/25/66 N2/25/66 HB: B7/41 N7/41</td> <td>LB: B5 N5 MB: B2/4/25/66 N2/25/66 HB: B7/38/41 N7/38/41</td> </tr> <tr> <td>ANT3 TRX0-U_DRX-MH</td> <td>MB/UHB</td> <td>UHB: B48 N48/77/78</td> <td>MB: B2/4/25/66 N2/25/66 UHB: B48 N48/77/78</td> </tr> <tr> <td>ANT4 PM-MHU</td> <td>MB/HB/UHB</td> <td>B41, N41/77/78</td> <td>MHB: B2/4/7/25/38/41/66 N2/7/25/38/41/66 UHB: B48 N48/77/78</td> </tr> <tr> <td>ANT5 DM-MH_DRX-L</td> <td>LB/MB/HB/UHB</td> <td>B41, N41/77/78</td> <td>LB: B5/26 N5 MHB: B2/4/7/25/38/41/66 N2/7/25/38/41/66 UHB: B48 N48/77/78</td> </tr> <tr> <td>ANT6</td> <td>WIFI/BT</td> <td>BT/WIFI(2.4G/5G)</td> <td>BT/WIFI(2.4G/5G)</td> </tr> <tr> <td>ANT7</td> <td>WIFI/GPS</td> <td>WIFI(2.4G/5G)</td> <td>WIFI(2.4G/5G) GPS L5</td> </tr> <tr> <td>ANT8</td> <td>GPS</td> <td></td> <td>GPS L1</td> </tr> </tbody> </table>							Antenna	Mode	TX Band	RX Band	ANT0 TRX1-LMH	LB/MB/HB	LB:B5/12/13/14/17/26/71 N5/12/13/14/71 MB: B2/4/25/66 N2/25/66 HB: LTE:B7/38 NR:N7/38	LB:B5/12/13/14/17/26/71 N5/12/13/14/71 MB: B2/4/25/66 N2/25/66 HB: LTE:B7/38/41 NR:N7/38/41	ANT1 DRX-LHU	LB/HB/UHB	B41, N41/N77/N78	LB:B5/12/13/14/17/26/71 N5/12/13/14/71 HB: B7/38/41 N7/38/41 UHB:B48 N48/77/78	ANT2 TRX0_LMH	LB/MB/HB	LB: B5 N5 MB: B2/4/25/66 N2/25/66 HB: B7/41 N7/41	LB: B5 N5 MB: B2/4/25/66 N2/25/66 HB: B7/38/41 N7/38/41	ANT3 TRX0-U_DRX-MH	MB/UHB	UHB: B48 N48/77/78	MB: B2/4/25/66 N2/25/66 UHB: B48 N48/77/78	ANT4 PM-MHU	MB/HB/UHB	B41, N41/77/78	MHB: B2/4/7/25/38/41/66 N2/7/25/38/41/66 UHB: B48 N48/77/78	ANT5 DM-MH_DRX-L	LB/MB/HB/UHB	B41, N41/77/78	LB: B5/26 N5 MHB: B2/4/7/25/38/41/66 N2/7/25/38/41/66 UHB: B48 N48/77/78	ANT6	WIFI/BT	BT/WIFI(2.4G/5G)	BT/WIFI(2.4G/5G)	ANT7	WIFI/GPS	WIFI(2.4G/5G)	WIFI(2.4G/5G) GPS L5	ANT8	GPS		GPS L1
Antenna	Mode	TX Band	RX Band																																												
ANT0 TRX1-LMH	LB/MB/HB	LB:B5/12/13/14/17/26/71 N5/12/13/14/71 MB: B2/4/25/66 N2/25/66 HB: LTE:B7/38 NR:N7/38	LB:B5/12/13/14/17/26/71 N5/12/13/14/71 MB: B2/4/25/66 N2/25/66 HB: LTE:B7/38/41 NR:N7/38/41																																												
ANT1 DRX-LHU	LB/HB/UHB	B41, N41/N77/N78	LB:B5/12/13/14/17/26/71 N5/12/13/14/71 HB: B7/38/41 N7/38/41 UHB:B48 N48/77/78																																												
ANT2 TRX0_LMH	LB/MB/HB	LB: B5 N5 MB: B2/4/25/66 N2/25/66 HB: B7/41 N7/41	LB: B5 N5 MB: B2/4/25/66 N2/25/66 HB: B7/38/41 N7/38/41																																												
ANT3 TRX0-U_DRX-MH	MB/UHB	UHB: B48 N48/77/78	MB: B2/4/25/66 N2/25/66 UHB: B48 N48/77/78																																												
ANT4 PM-MHU	MB/HB/UHB	B41, N41/77/78	MHB: B2/4/7/25/38/41/66 N2/7/25/38/41/66 UHB: B48 N48/77/78																																												
ANT5 DM-MH_DRX-L	LB/MB/HB/UHB	B41, N41/77/78	LB: B5/26 N5 MHB: B2/4/7/25/38/41/66 N2/7/25/38/41/66 UHB: B48 N48/77/78																																												
ANT6	WIFI/BT	BT/WIFI(2.4G/5G)	BT/WIFI(2.4G/5G)																																												
ANT7	WIFI/GPS	WIFI(2.4G/5G)	WIFI(2.4G/5G) GPS L5																																												
ANT8	GPS		GPS L1																																												
Peak Gain ②		Ant0	Ant1	Ant2	Ant3	Ant4	ANT5																																								
FDD 2/5G N2(1850-1910 MHz): US		0.10		1.10																																											
FDD 4(1710-1755 MHz): US		0.60		-0.90																																											
FDD 5/5G N5 (824-849 MHz): US		-0.10		-2.40																																											
FDD 7/5G N7 (2500-2570 MHz): EU		2.30		0.60																																											
FDD 12/5G N12 (699-716 MHz): US		-0.30																																													
FDD 13(777-787 MHz): US		-1.00																																													
FDD 14(788-798 MHz): US		-0.50																																													
FDD 17(704-716 MHz): US		-0.30																																													
FDD 25/5G N25 (1850-1915 MHz): US		0.10		1.10																																											
FDD 26(814-849 MHz): US		-0.10																																													
FDD 66/5G N66 (1710-1780 MHz):		0.60		-0.30																																											
FDD 71/5G NR n71,(663-698 MHz): US		-1.60																																													
TDD 48/5G N48 (3540-3600 MHz): US					SRS peak gain -1.40																																										
TDD 48//5G N48 (3601-3659 MHz): US					SRS peak gain -1.60																																										
TDD 48/5G N48 (3660-3700 MHz): US					SRS peak gain -2.20																																										
TDD B38/5G n38(2570-2620 MHz): US, EU, China		1.10		0.6																																											
TDD 41/n41(2496-2690 MHz): US			SRS peak gain 2.20	0.60		SRS peak gain 2.20	SRS peak gain 2.20																																								

n77(3300-3550 MHz)		SRS peak gain -1.10		0.40	SRS peak gain -0.40	SRS peak gain -1.00
n77(3551-3750 MHz)				0.10		
n77(3751-4200 MHz)				-0.10		
n78(3300-3550 MHz)		SRS peak gain -1.10		0.40	SRS peak gain -1.90	SRS peak gain -1.00
n78(3551-3750 MHz)				0.10		
n78(3751-3800 MHz)				-0.1		

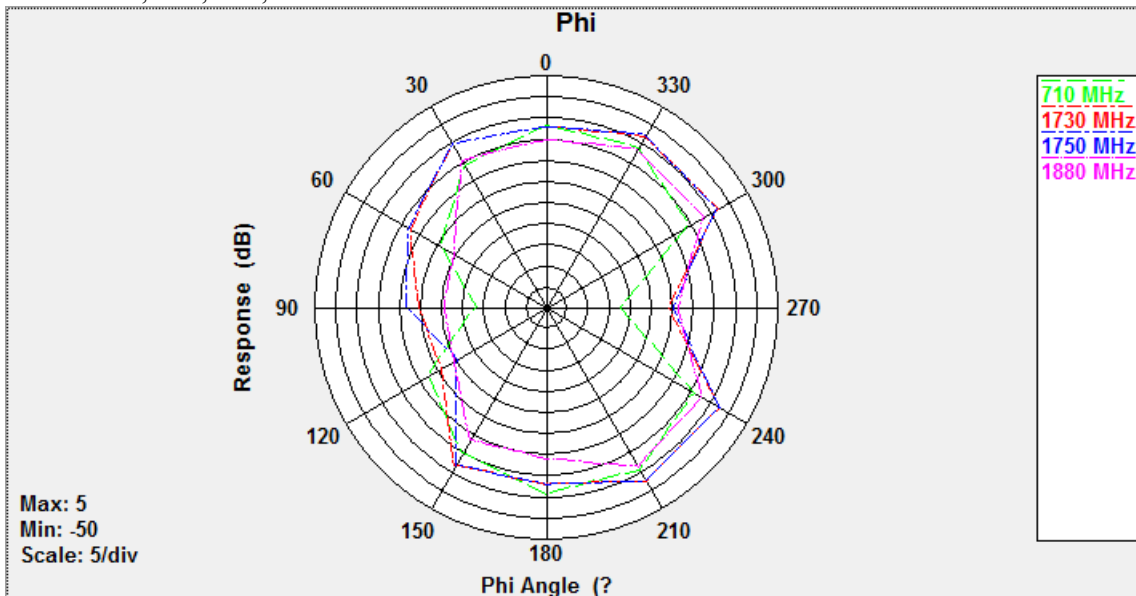
Test Site: SATIMO

ANT0:

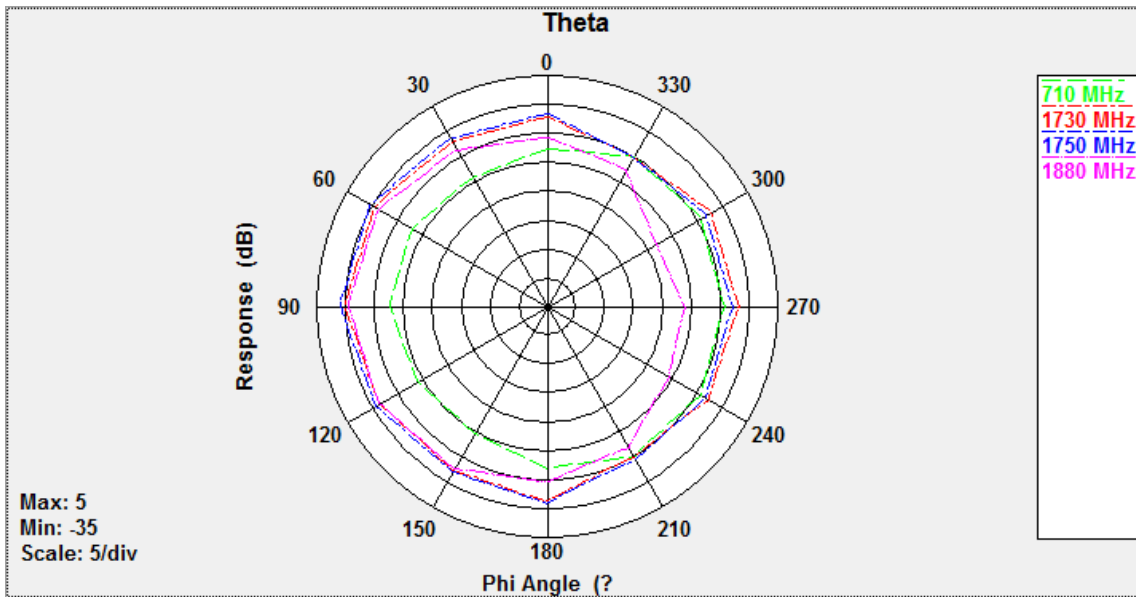
Phi0: 710,1730,1750,1880MHz



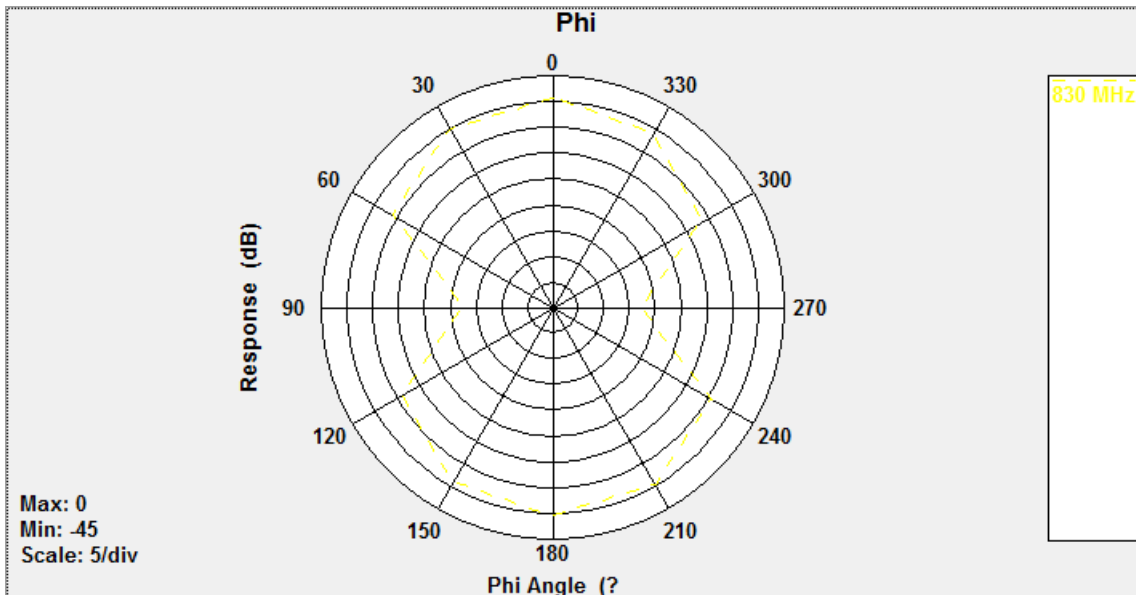
Phi90: 710,1730,1750,1880MHz



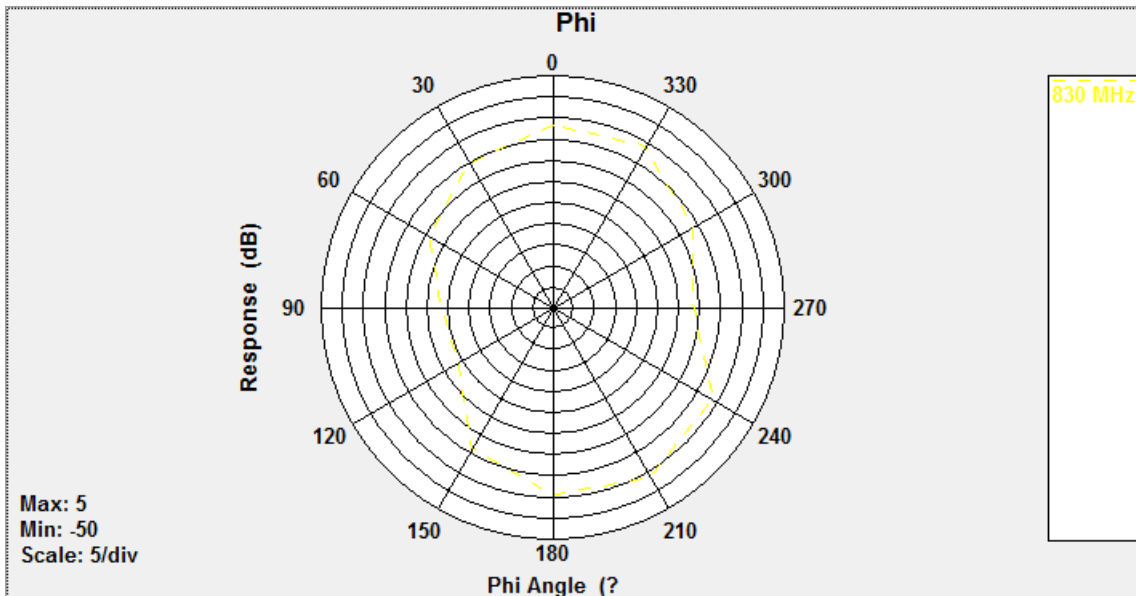
Theta90: 710,1730,1750,1880MHz



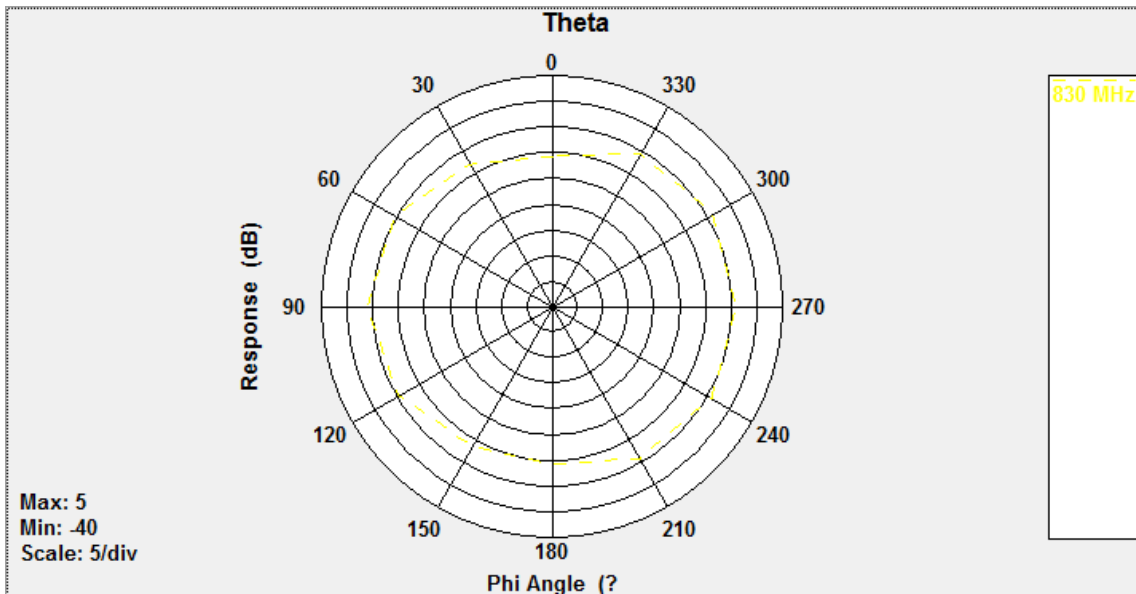
Phi0: 830MHz



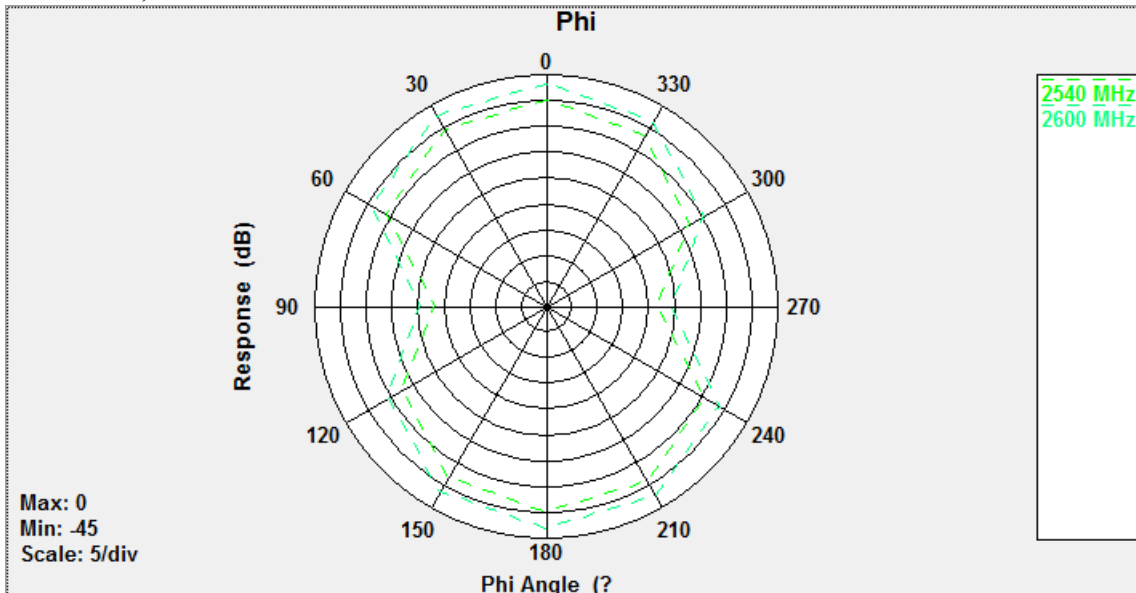
Phi90: 830MHz



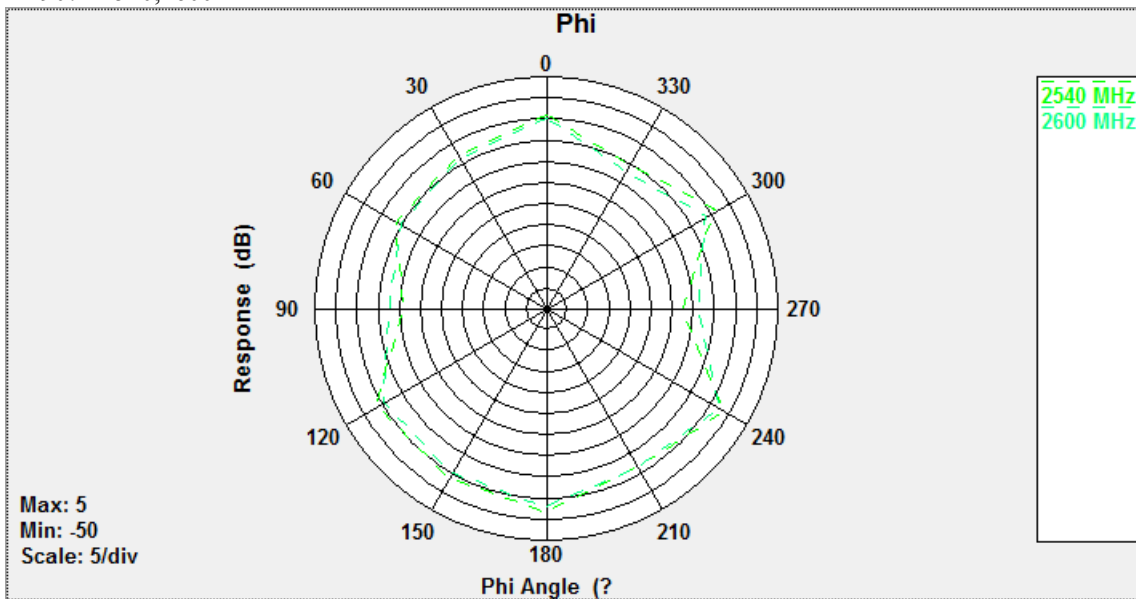
Theta90: 830MHz



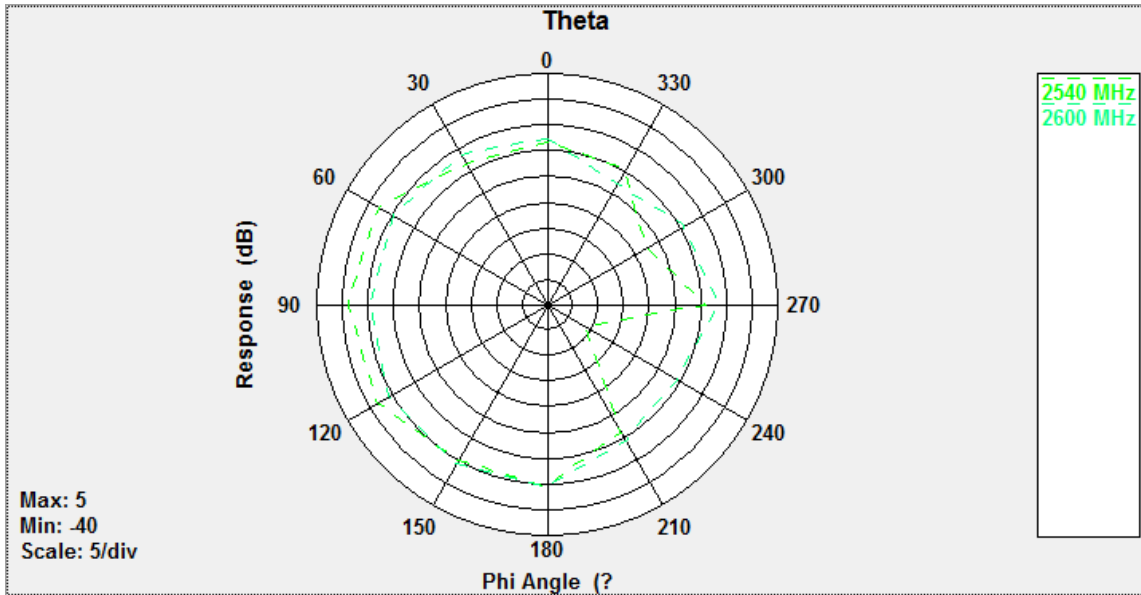
Phi0: 2540,2600MHz



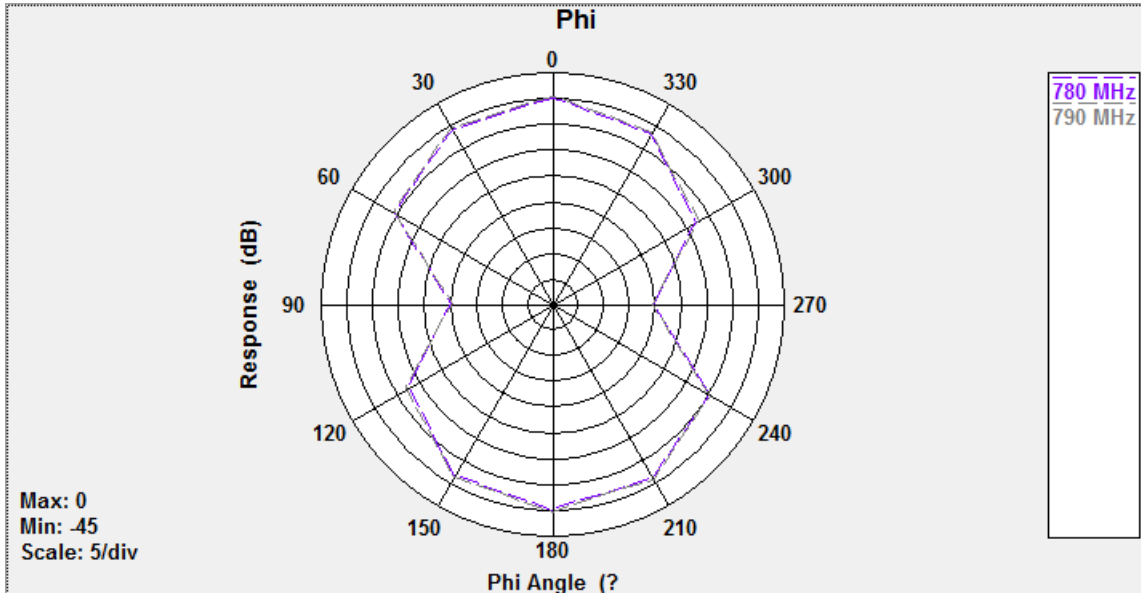
Phi90: 2540,2600MHz



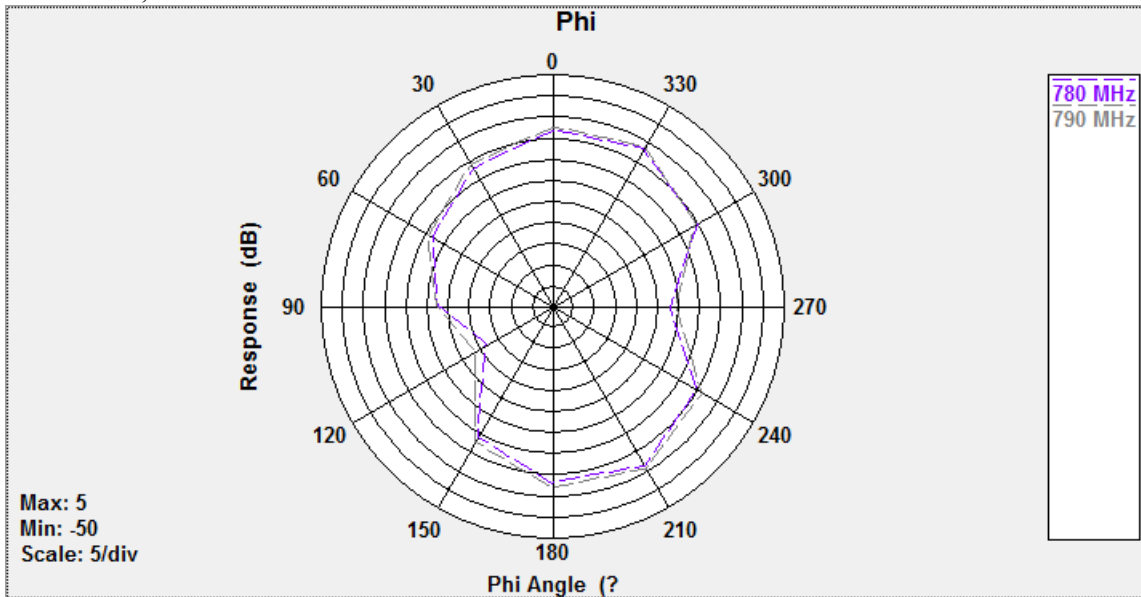
Theta90: 2540,2600MHz



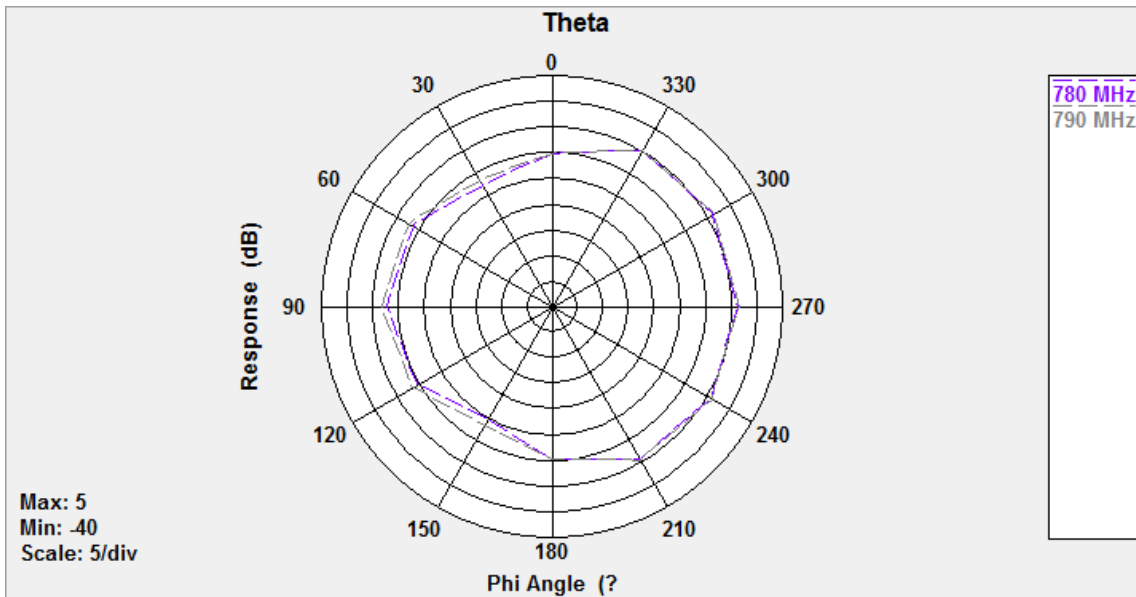
Phi0: 780,790MHz



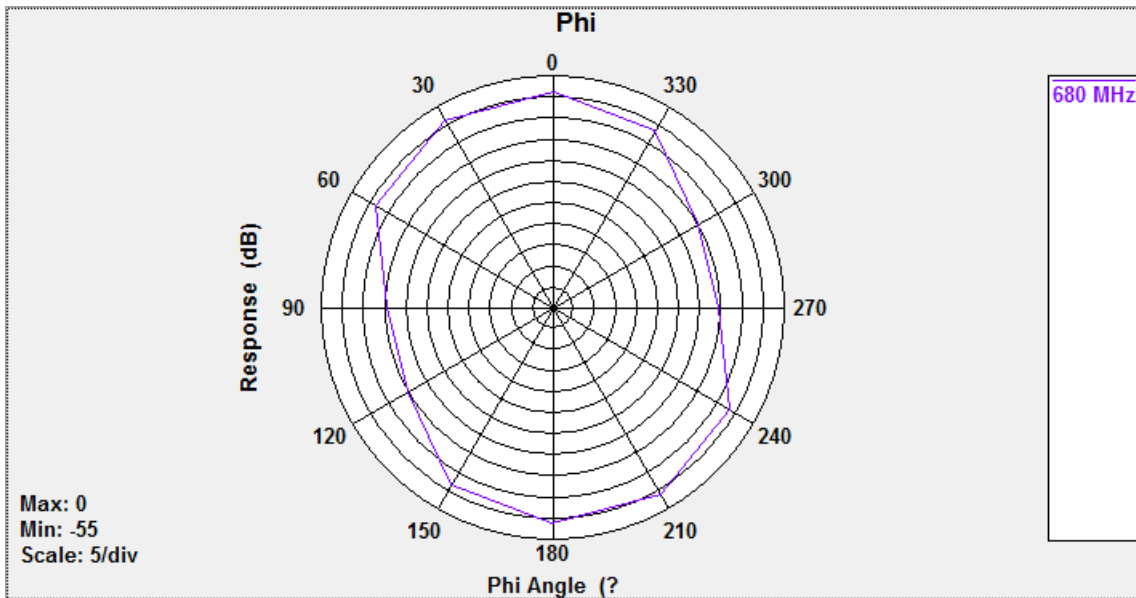
Phi90: 780,790MHz



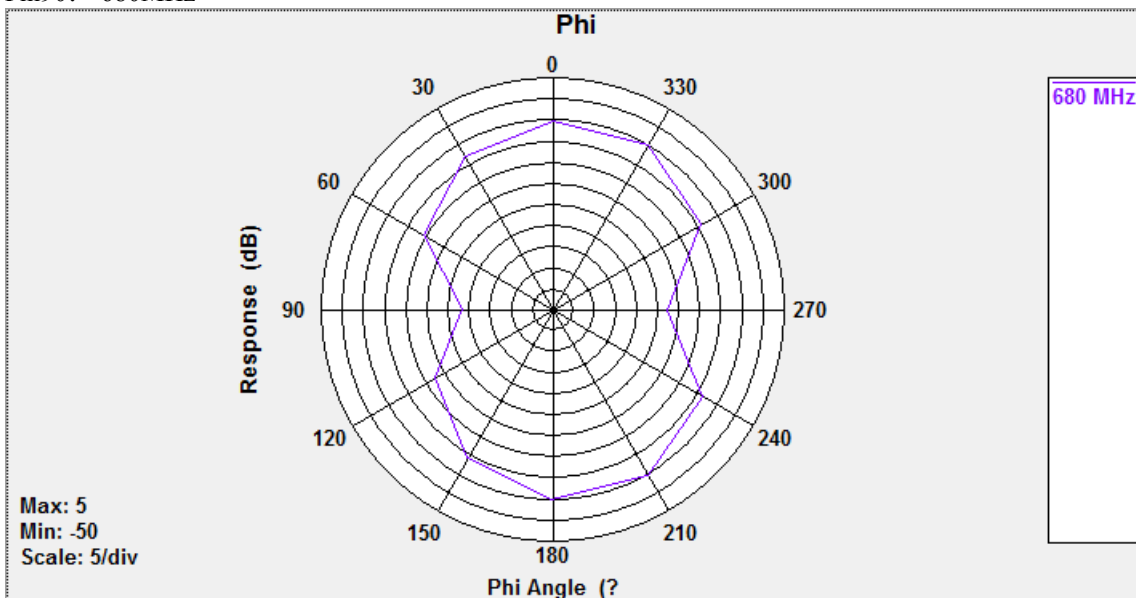
Theta90: 780,790MHz



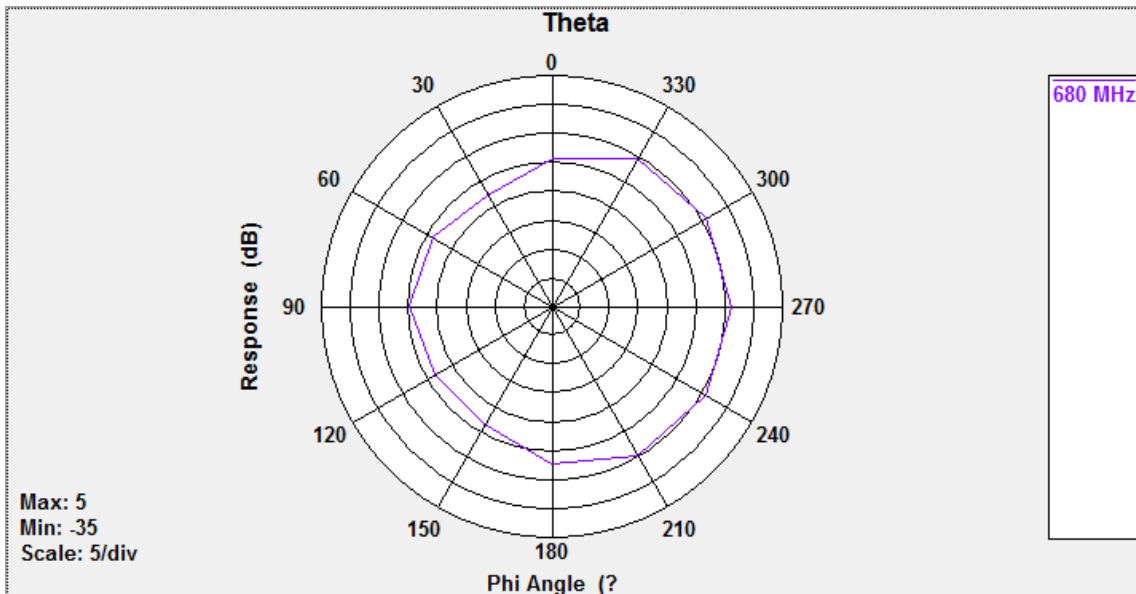
Phi0: 680MHz



Phi90: 680MHz

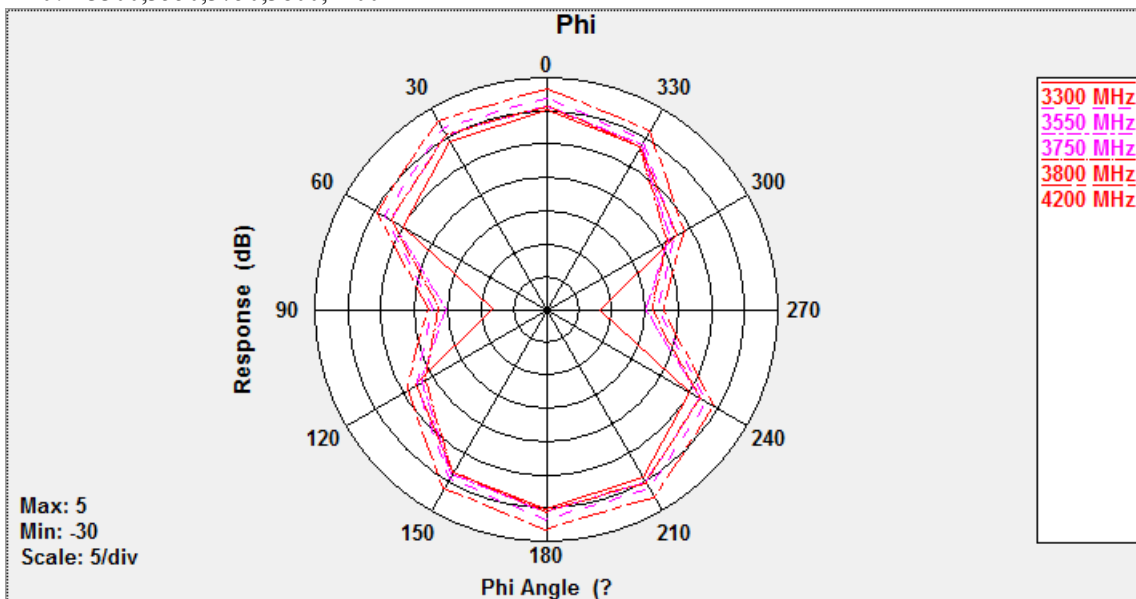


Theta90: 680MHz

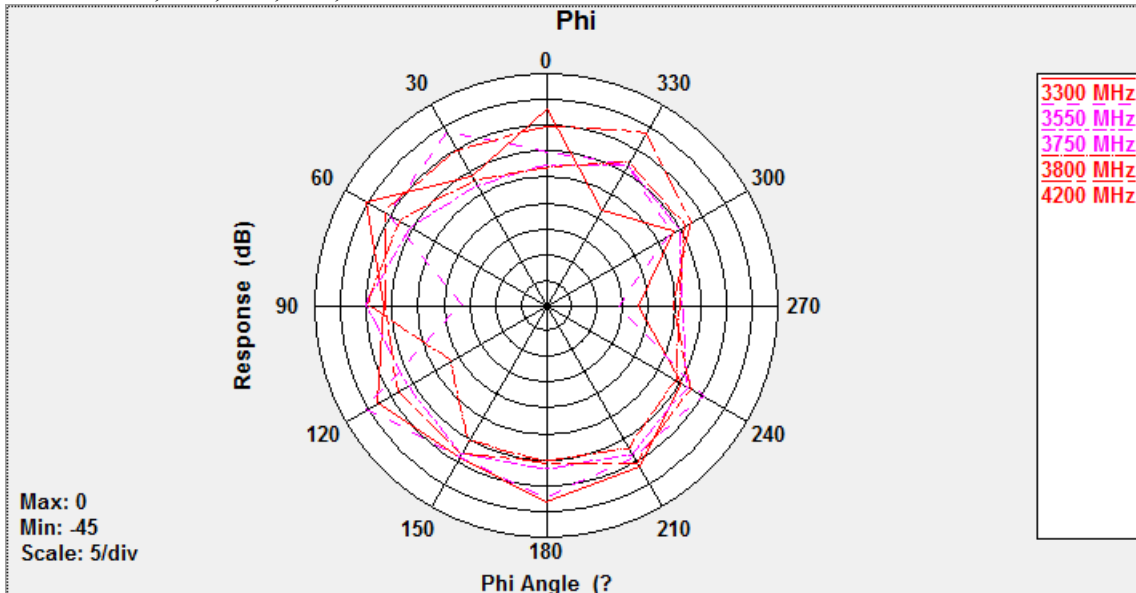


ANT1:

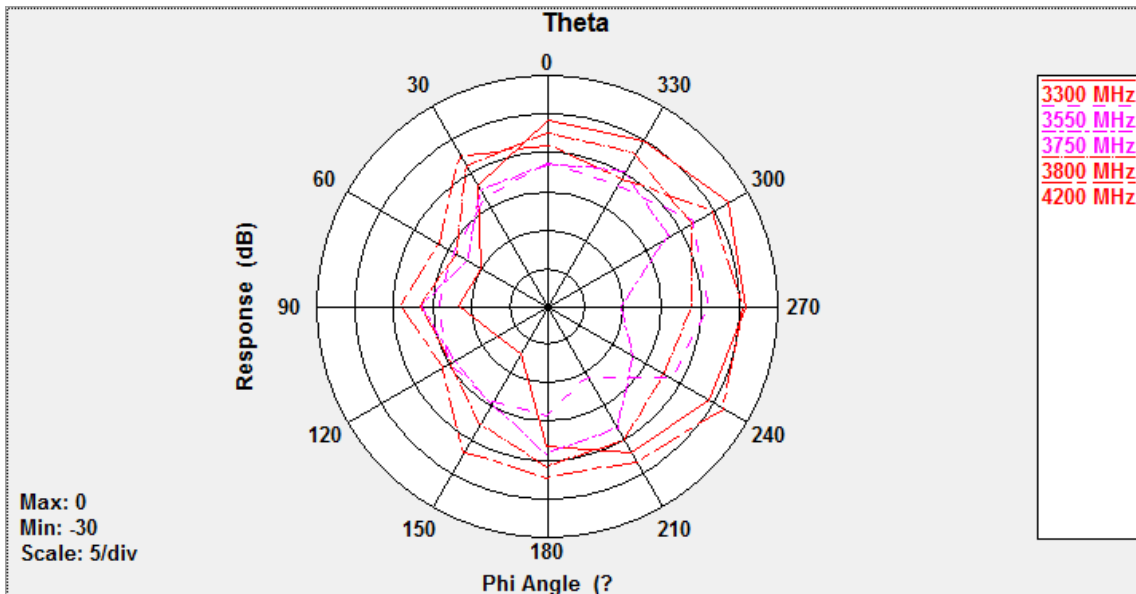
Phi0: 3300,3550,3750,3800,4200MHz



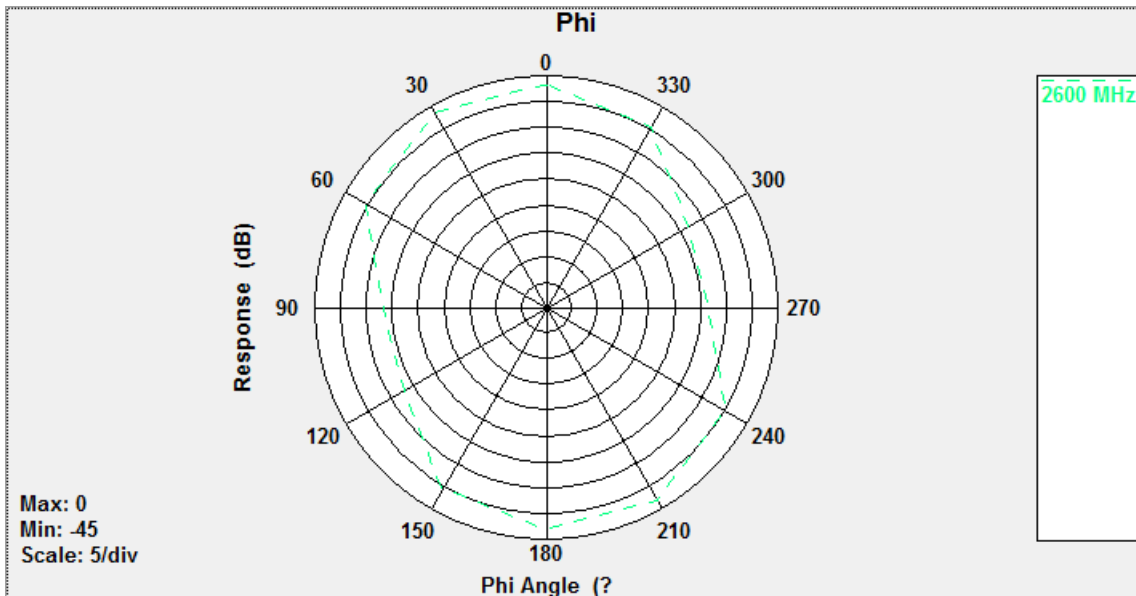
Phi90: 3300,3550,3750,3800,4200MHz



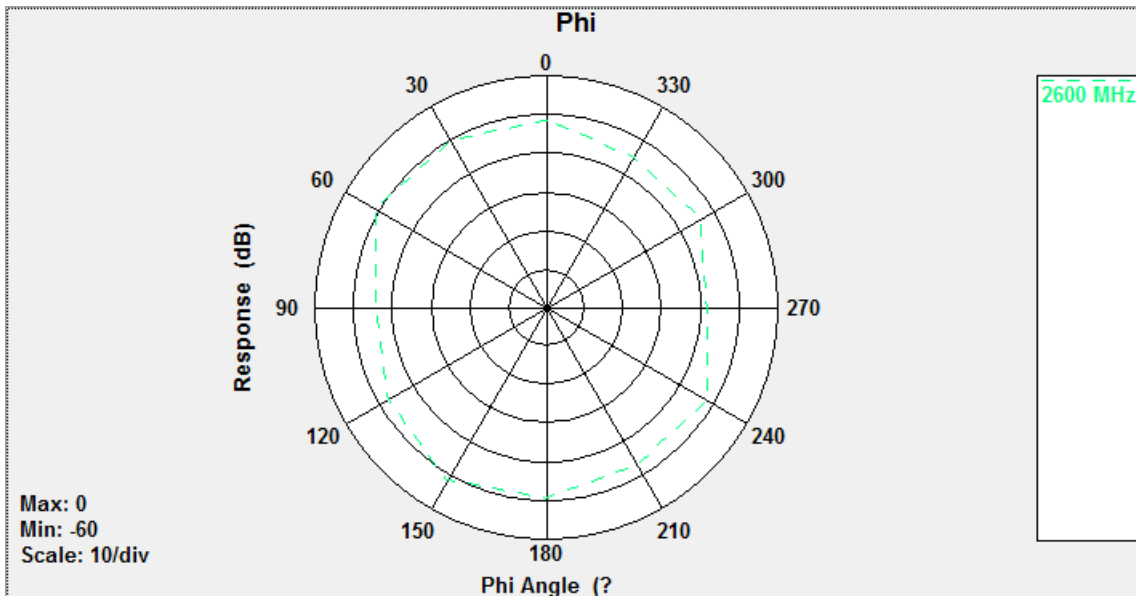
Theta90: 3300,3550,3750,3800,4200MHz



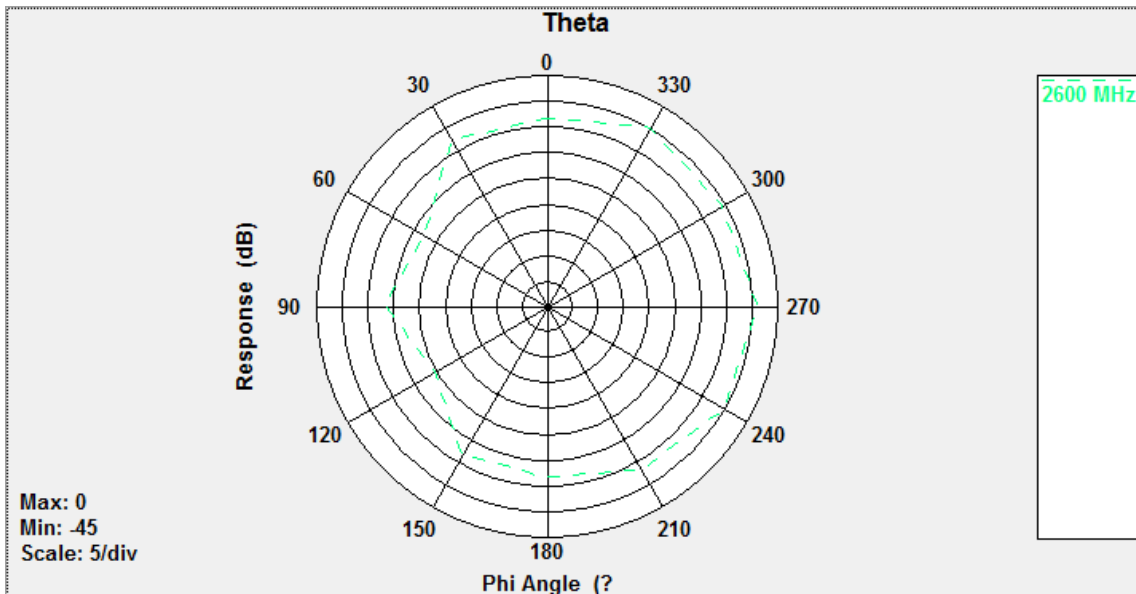
Phi0: 2600MHz



Phi90: 2600MHz

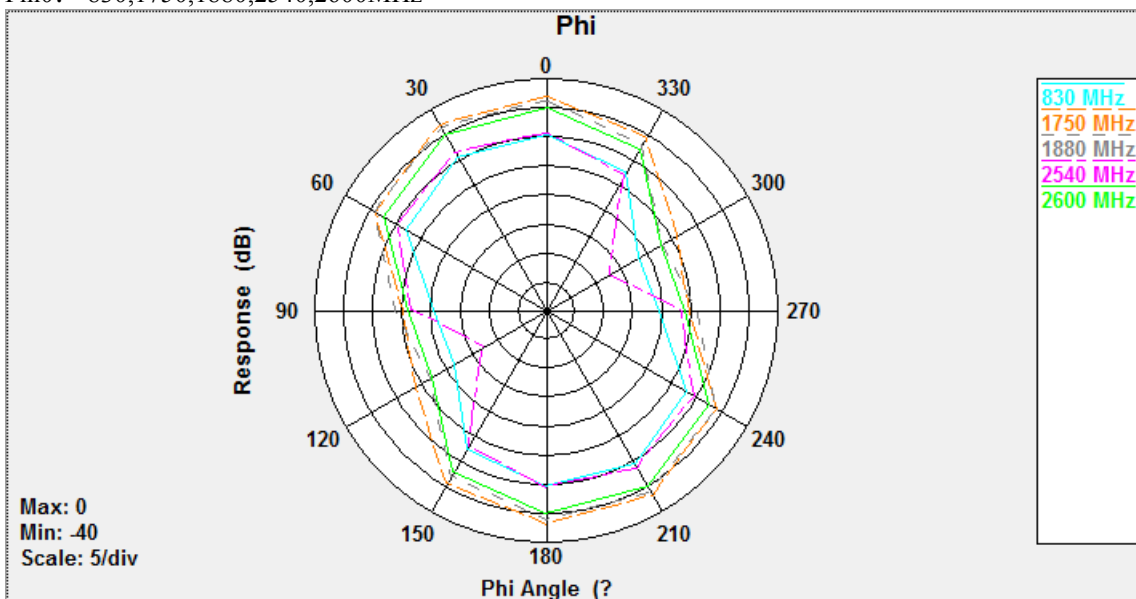


Theta90: 2600MHz

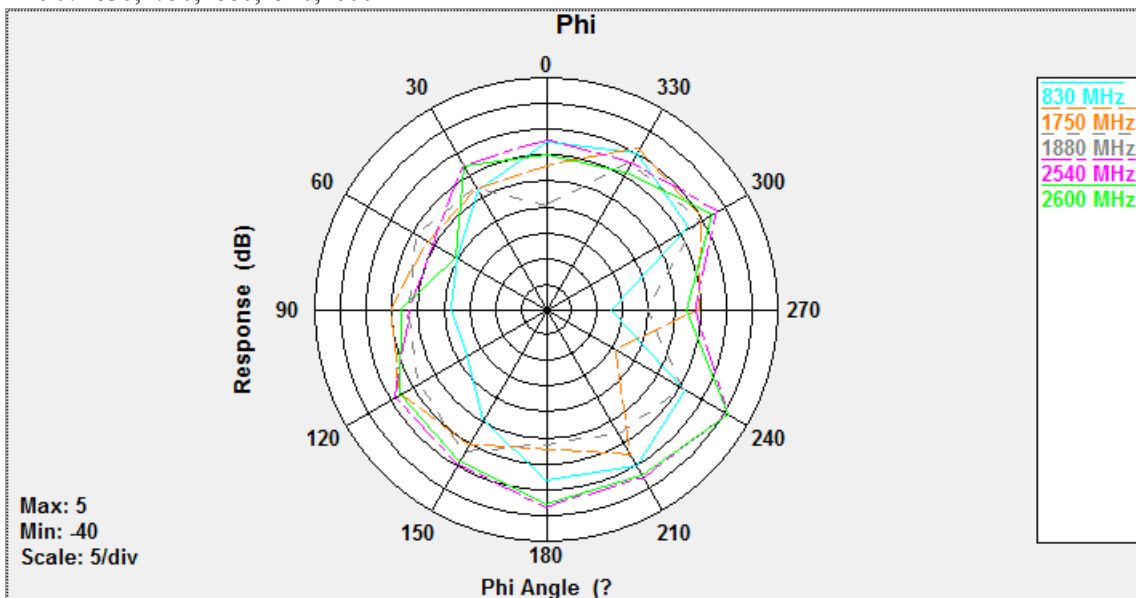


ANT2:

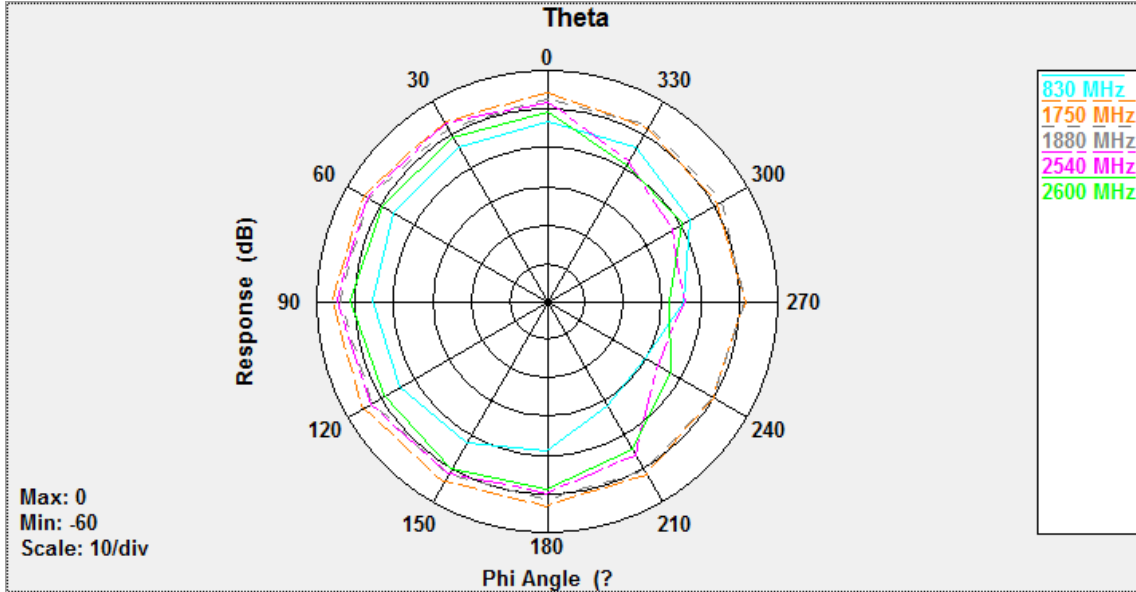
Phi0: 830,1750,1880,2540,2600MHz



Phi90: 830,1750,1880,2540,2600MHz

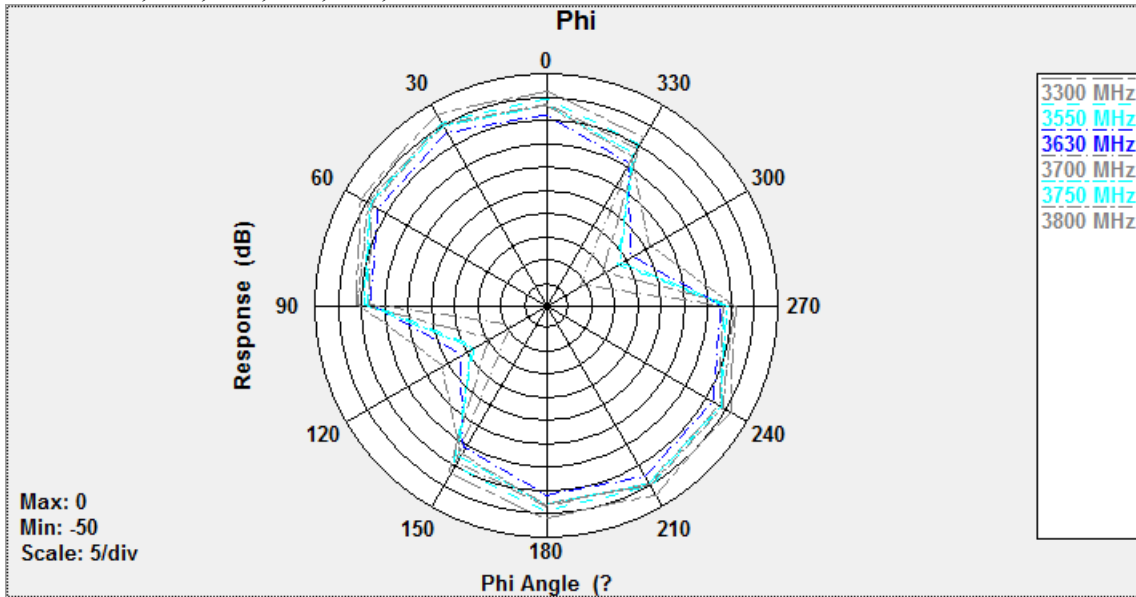


Theta90: 830,1750,1880,2540,2600MHz

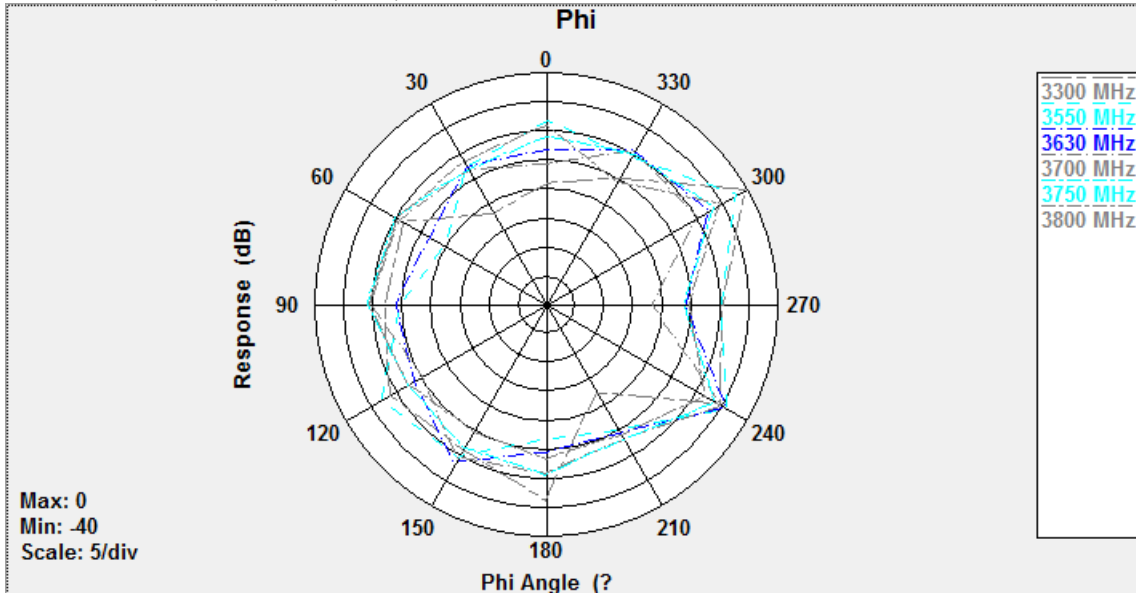


ANT3:

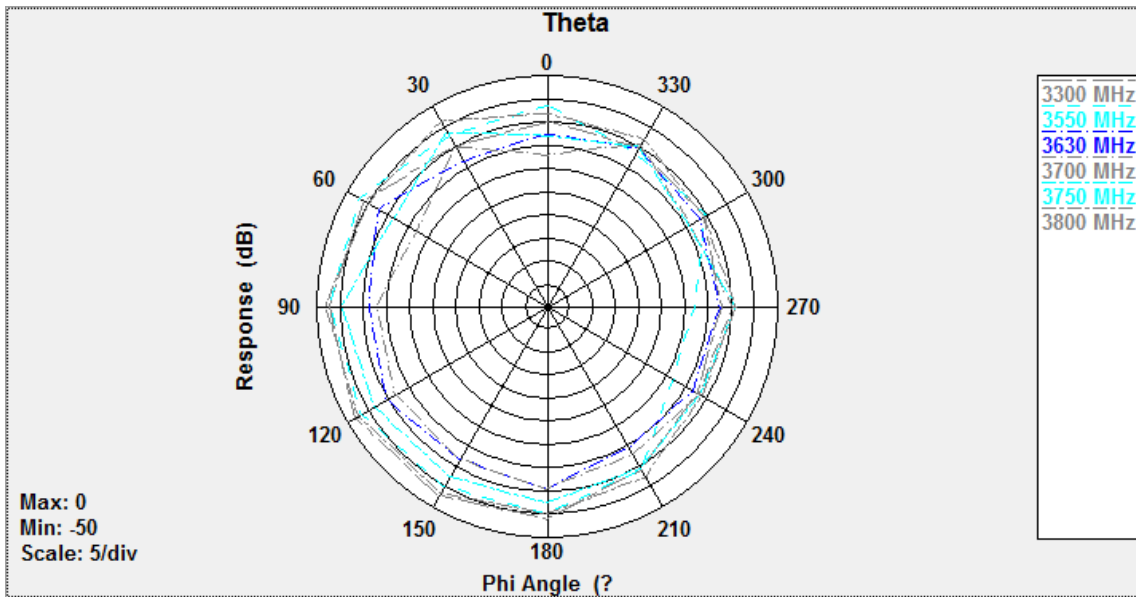
Phi0: 3300,3550,3630,3700,3750,3800 MHz



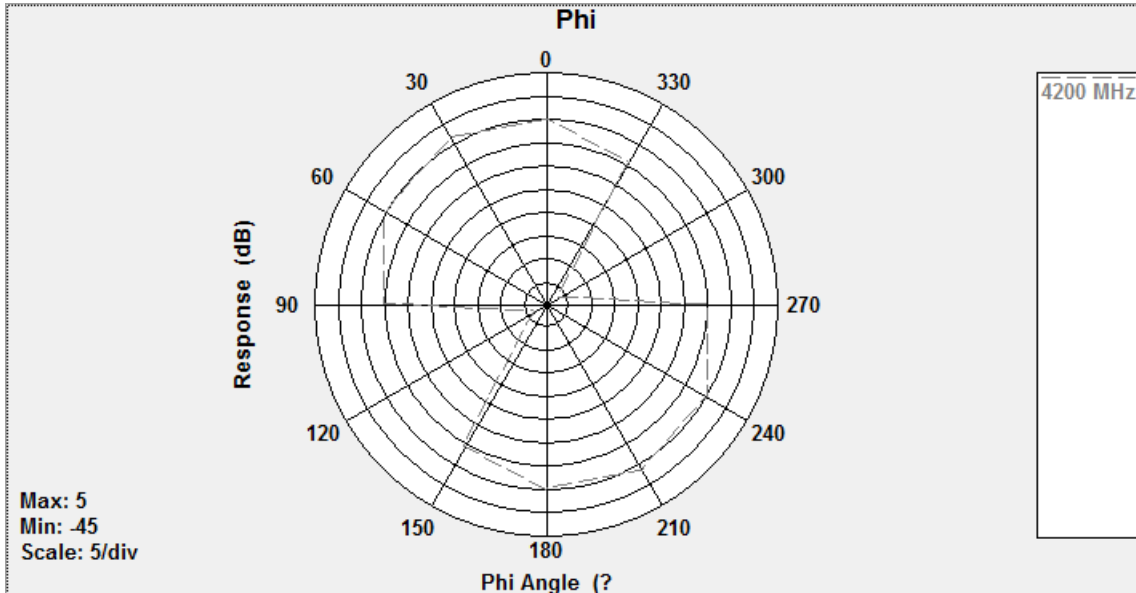
Phi90: 3300,3550,3630,3700,3750,3800MHz



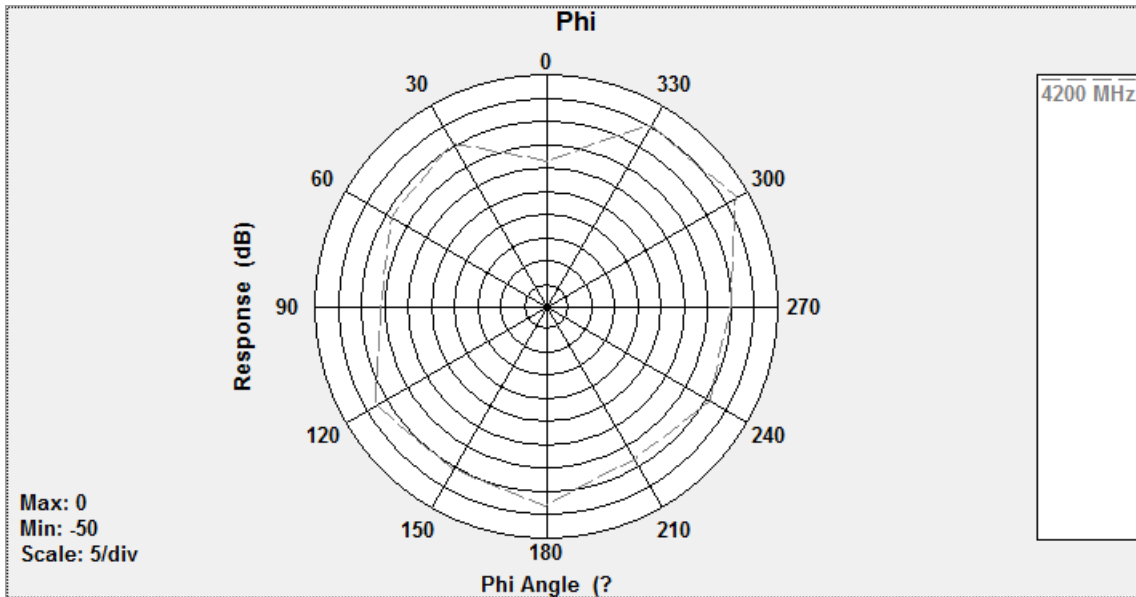
Theta90: 3300,3550,3630,3700,3750,3800MHz



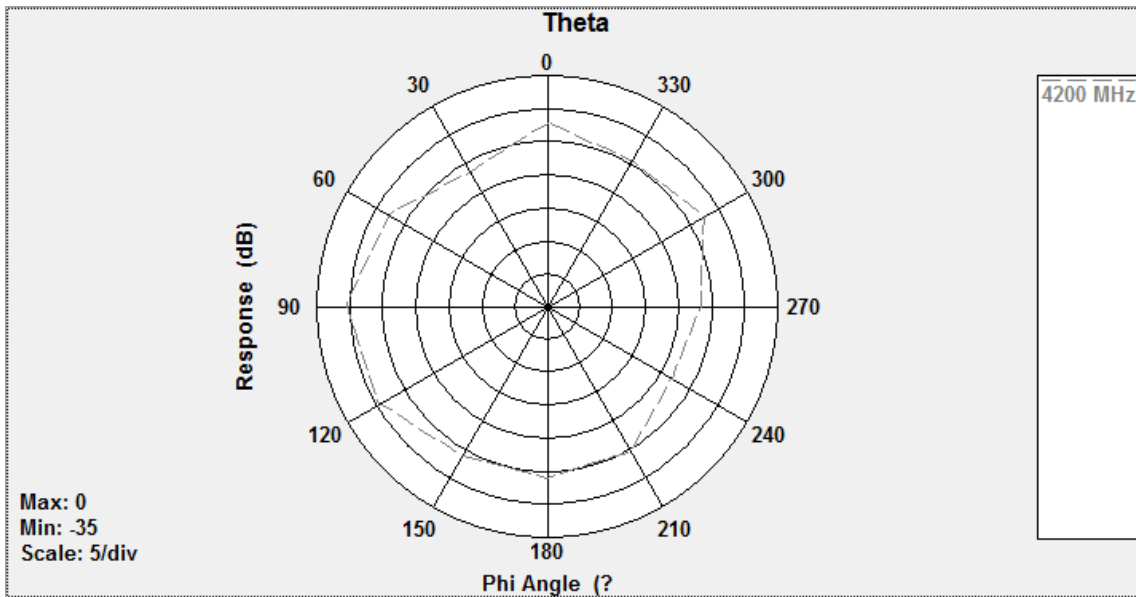
Phi0: 4200MHz



Phi90: 4200MHz

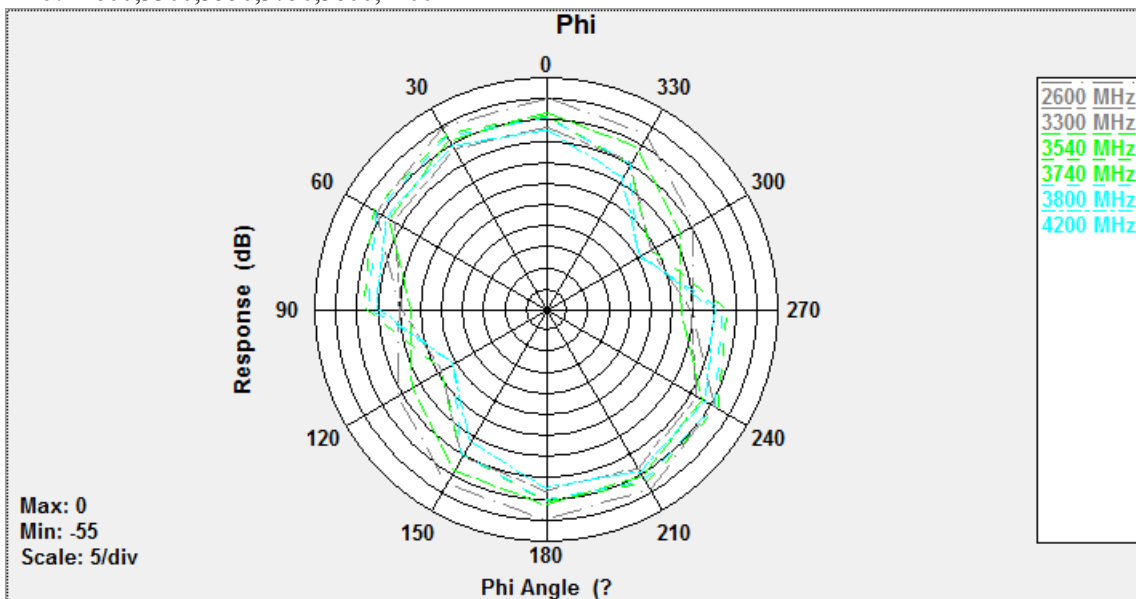


Theta90: 4200MHz

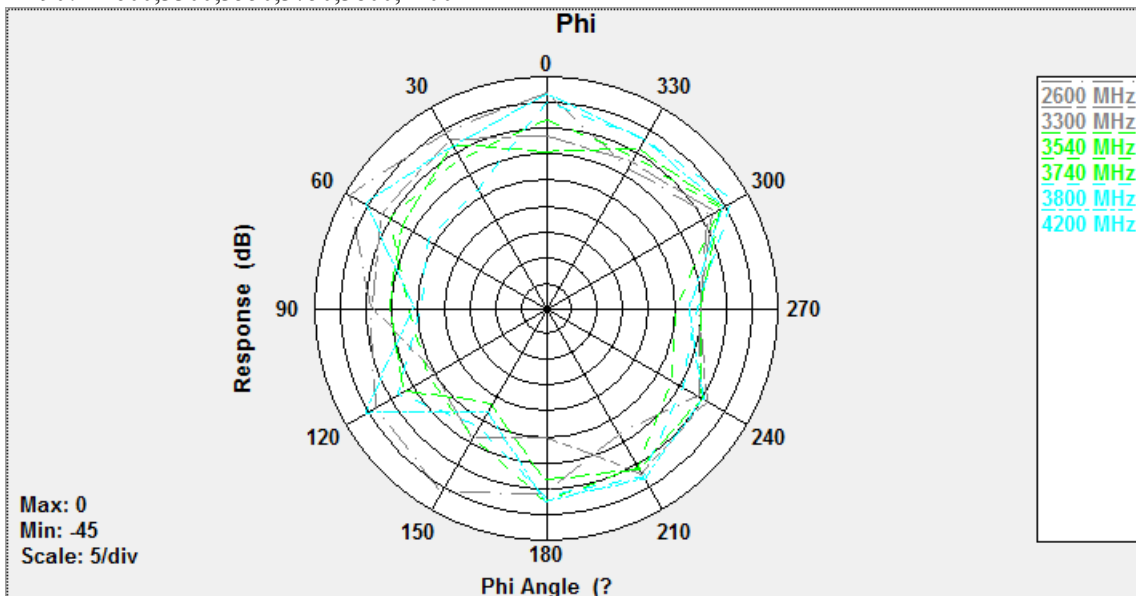


ANT4:

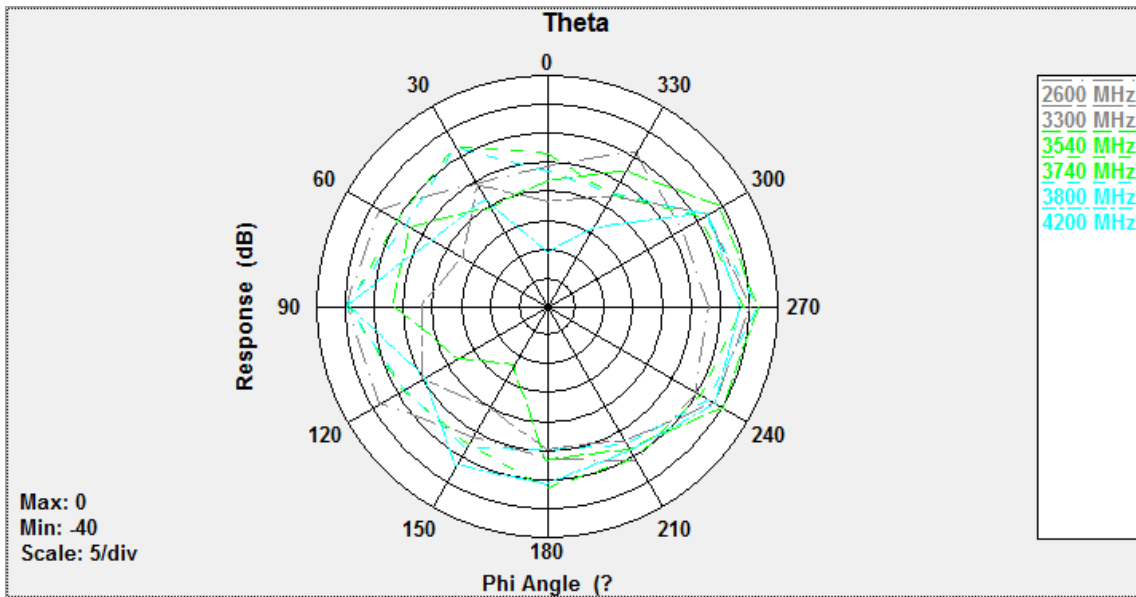
Phi0: 2600,3300,3550,3750,3800,4200MHz



Phi90: 2600,3300,3550,3750,3800,4200MHz

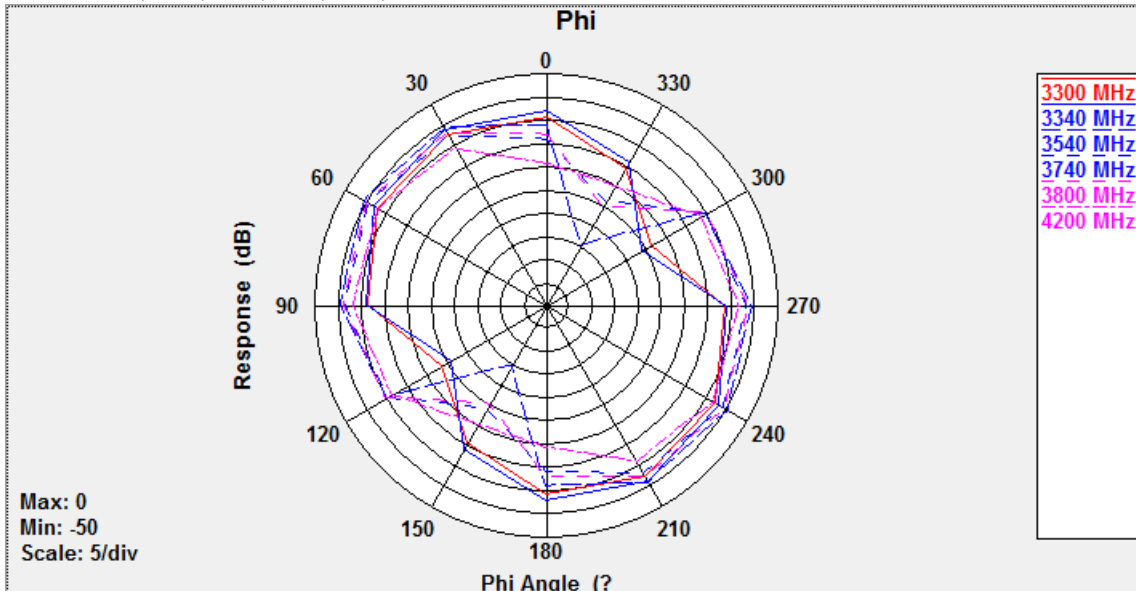


Theta90: 2600,3300,3550,3750,3800,4200MHz

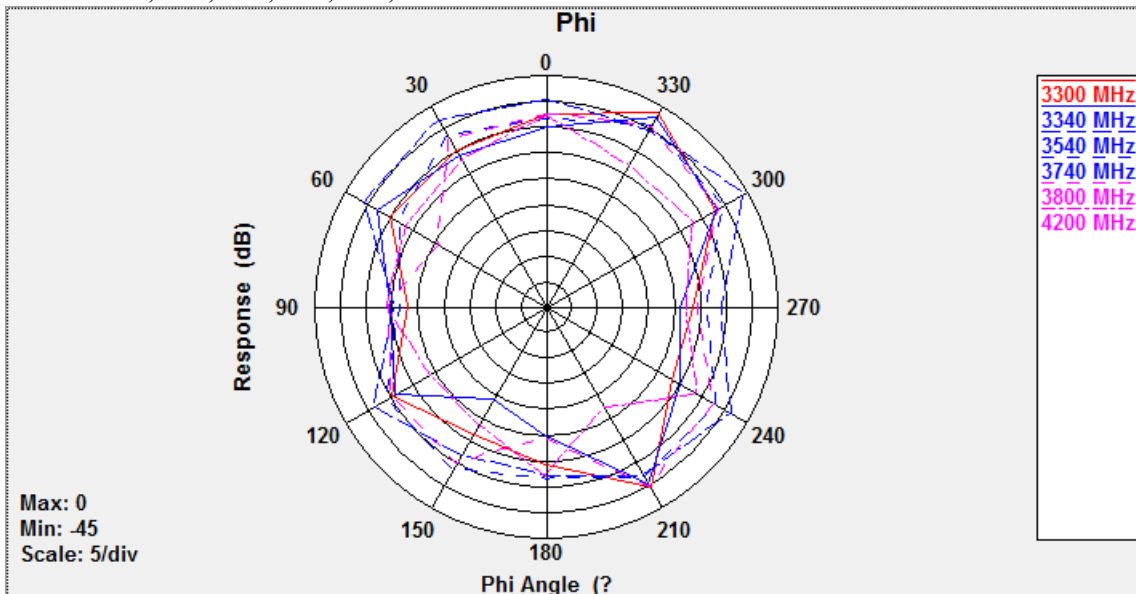


ANT5:

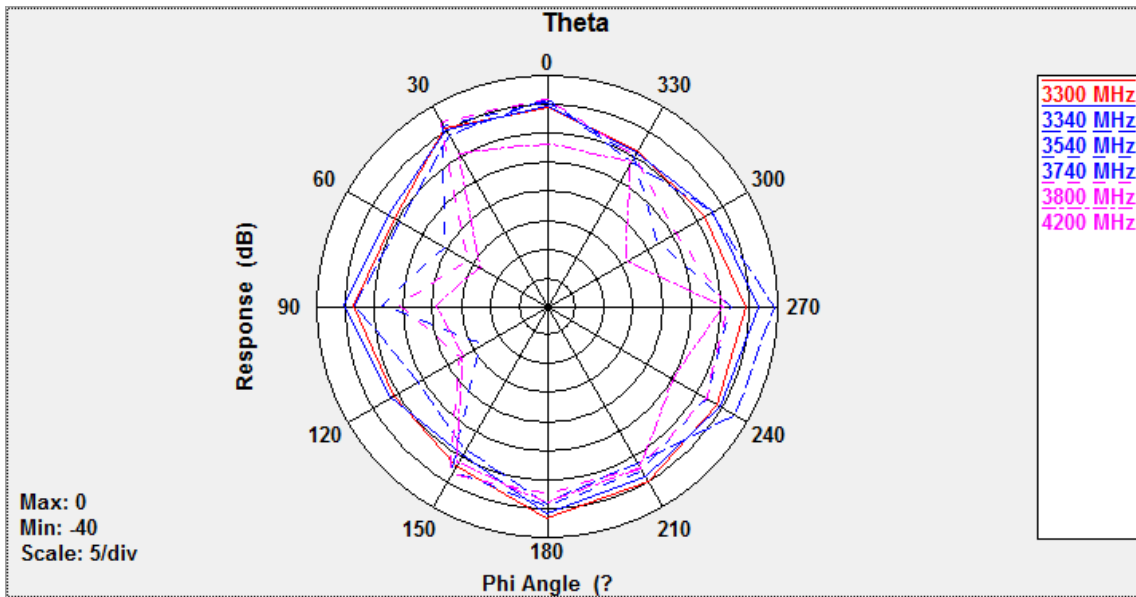
Phi0: 2600,3300,3550,3750,3800,4200MHz



Phi90: 2600,3300,3550,3750,3800,4200MHz

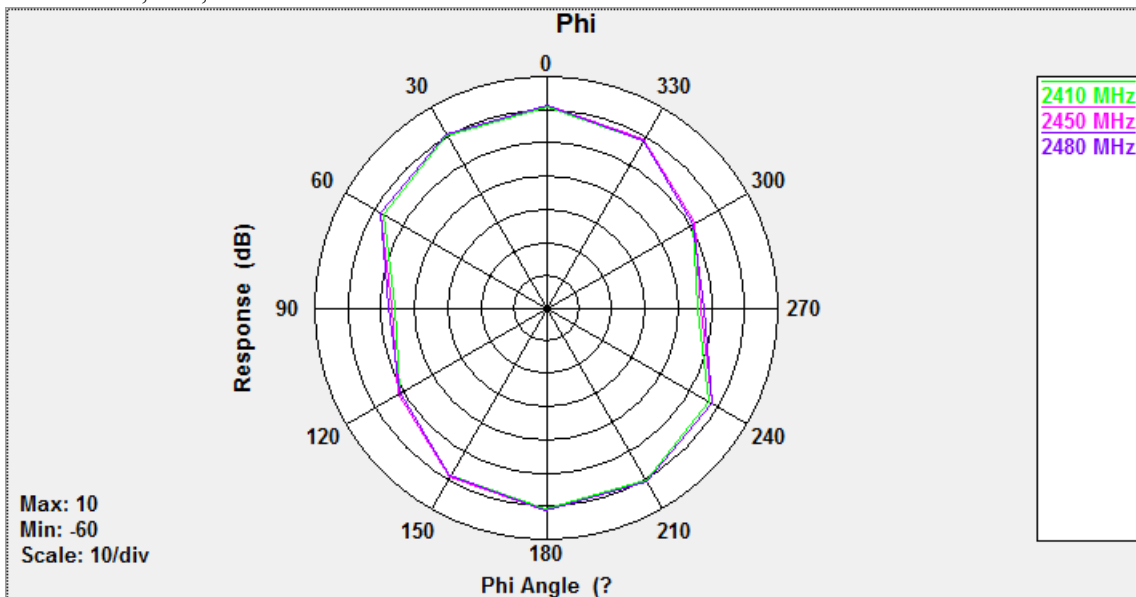


Theta90: 2600,3300,3550,3750,3800,4200MHz

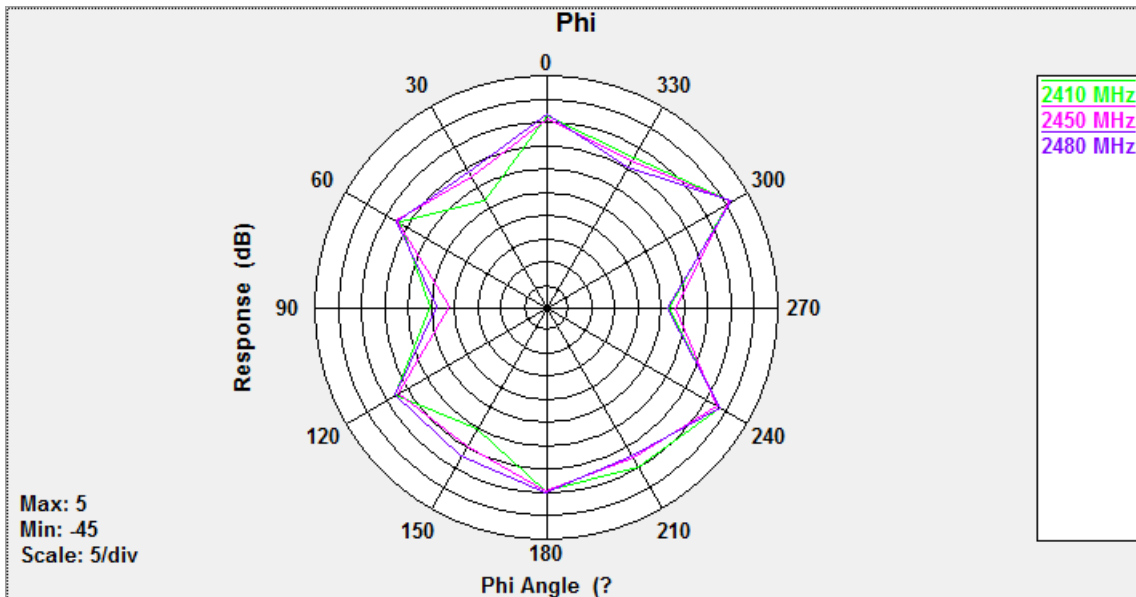


ANT6:

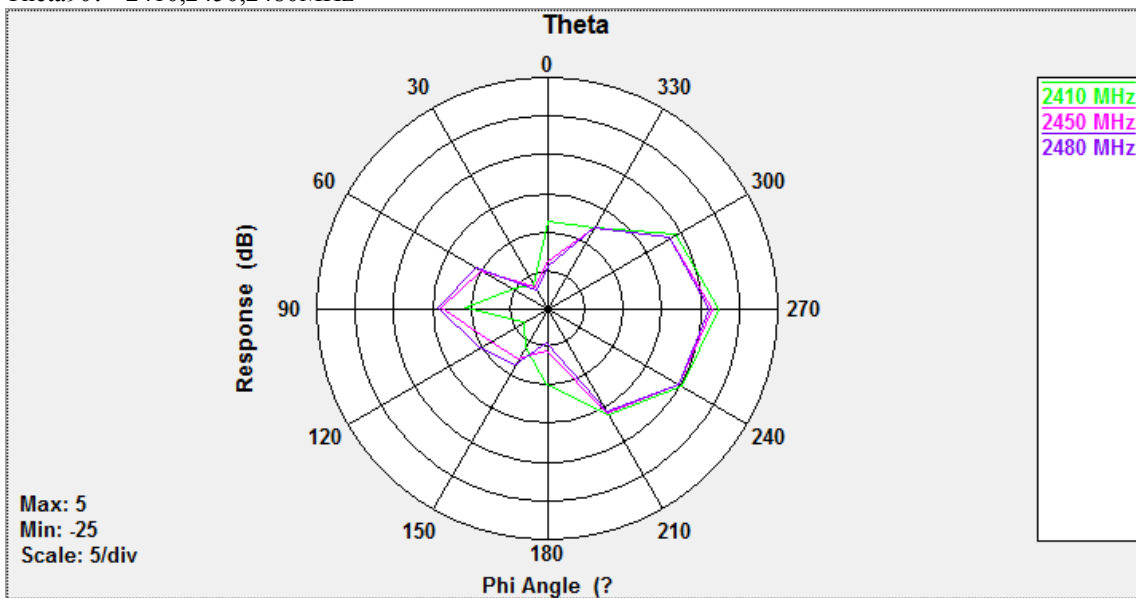
Phi0: 2410,2450,2480MHz



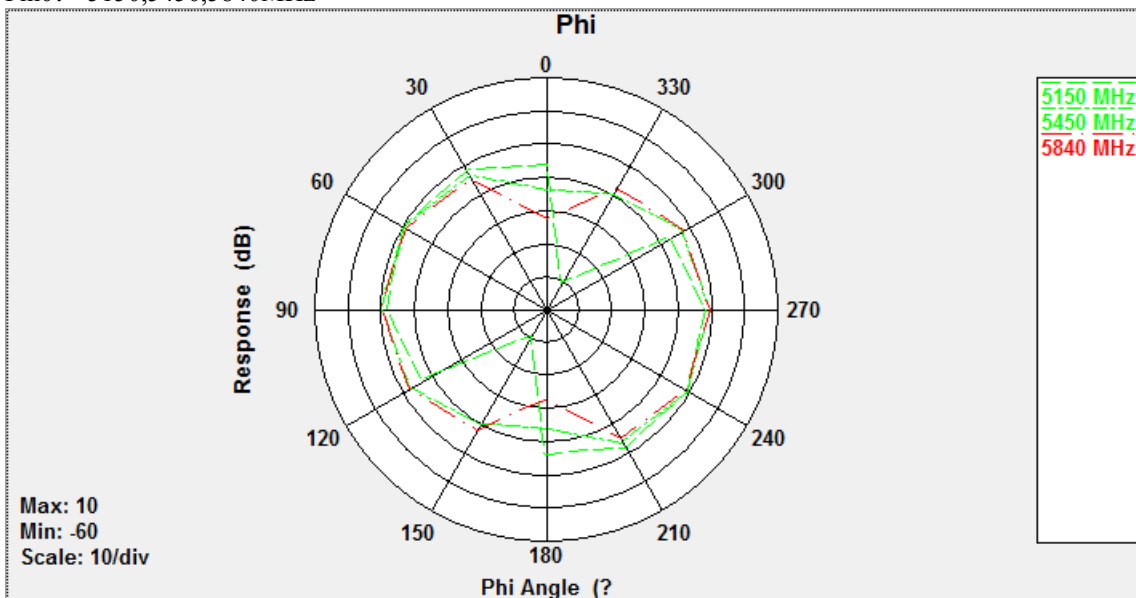
Phi90: 2410,2450,2480MHz



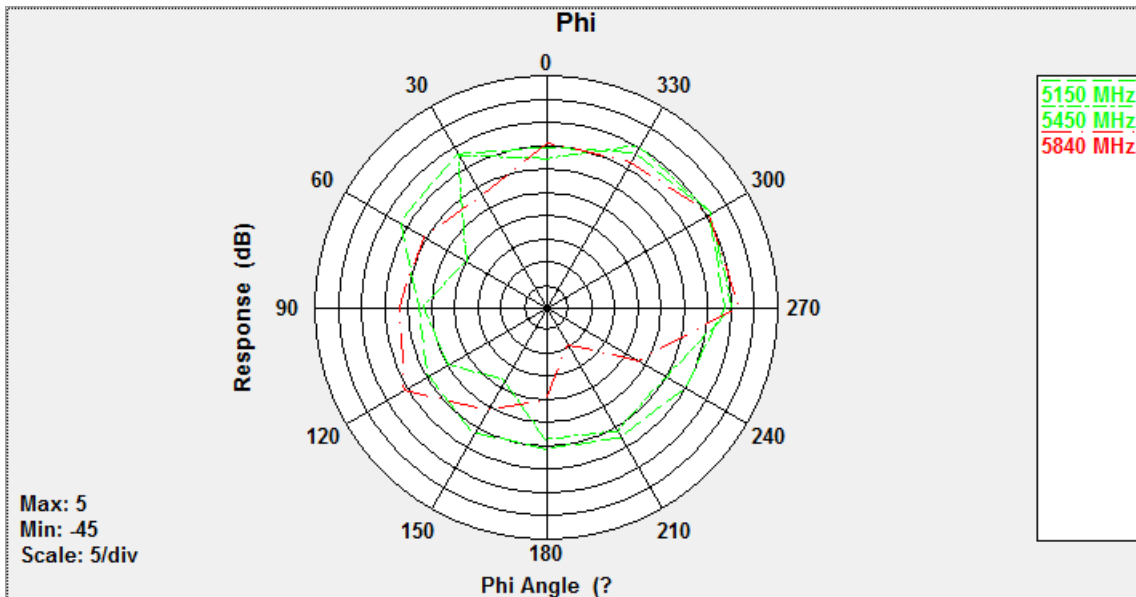
Theta90: 2410,2450,2480MHz



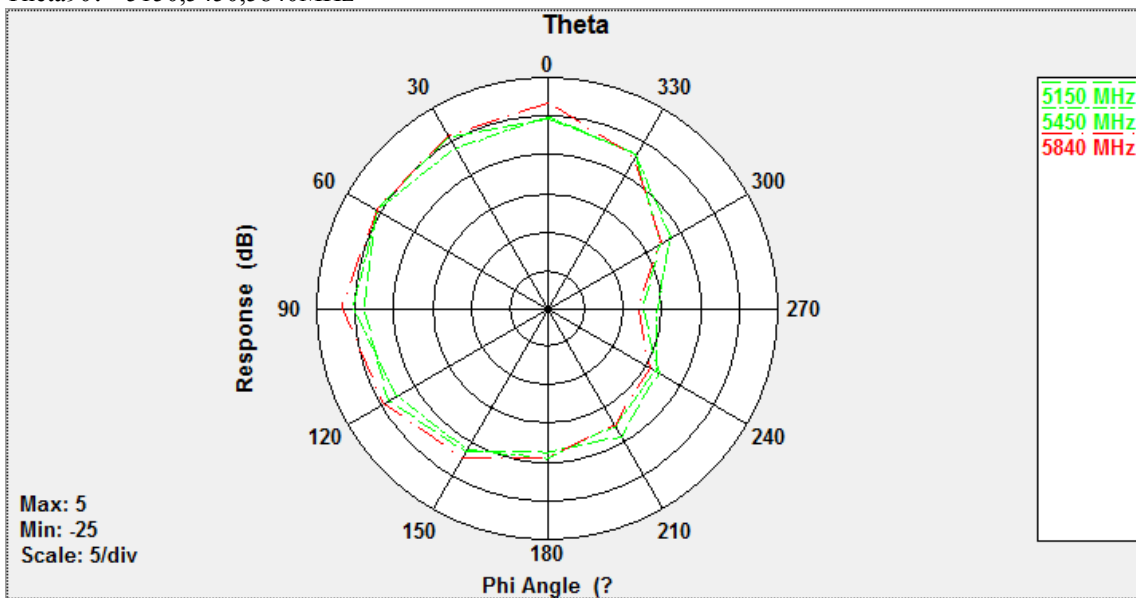
Phi0: 5150,5450,5840MHz



Phi90: 5150,5450,5840MHz

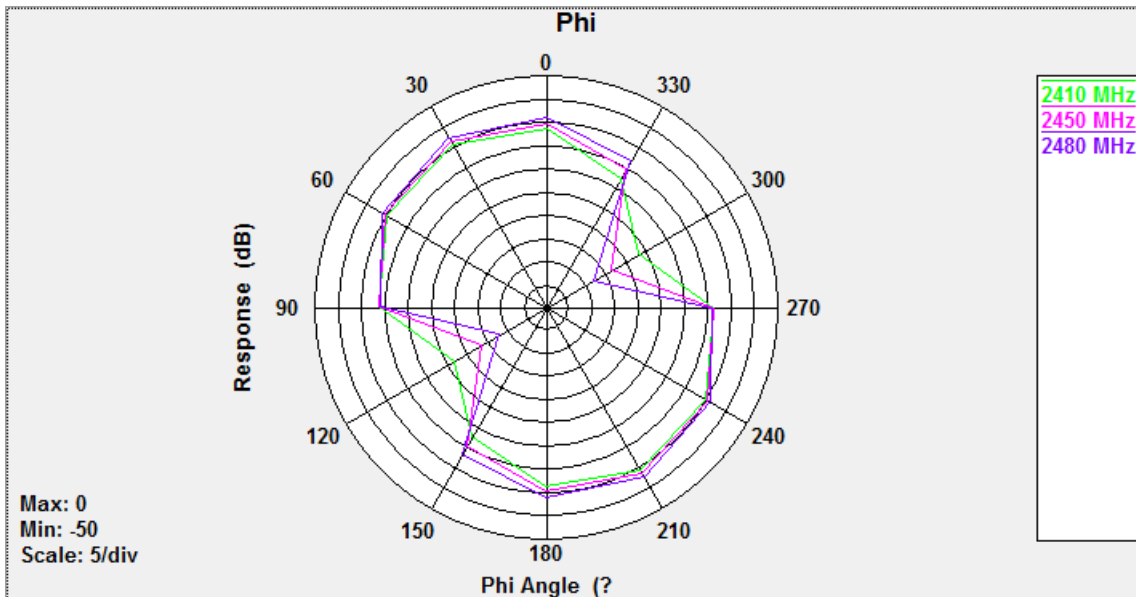


Theta90: 5150,5450,5840MHz

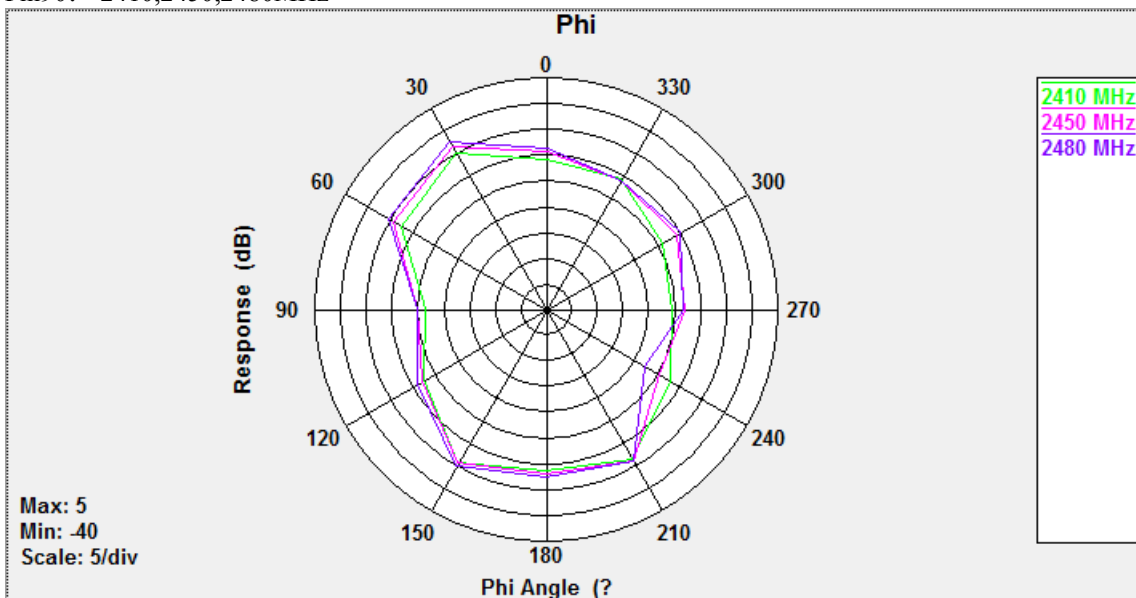


ANT7:

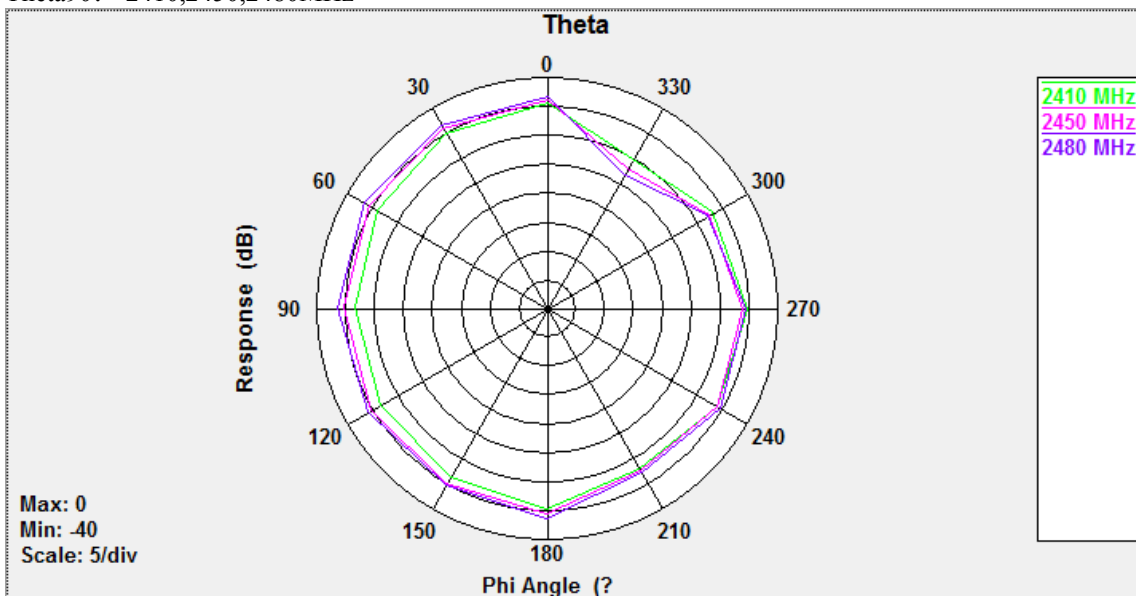
Phi0: 2410,2450,2480MHz



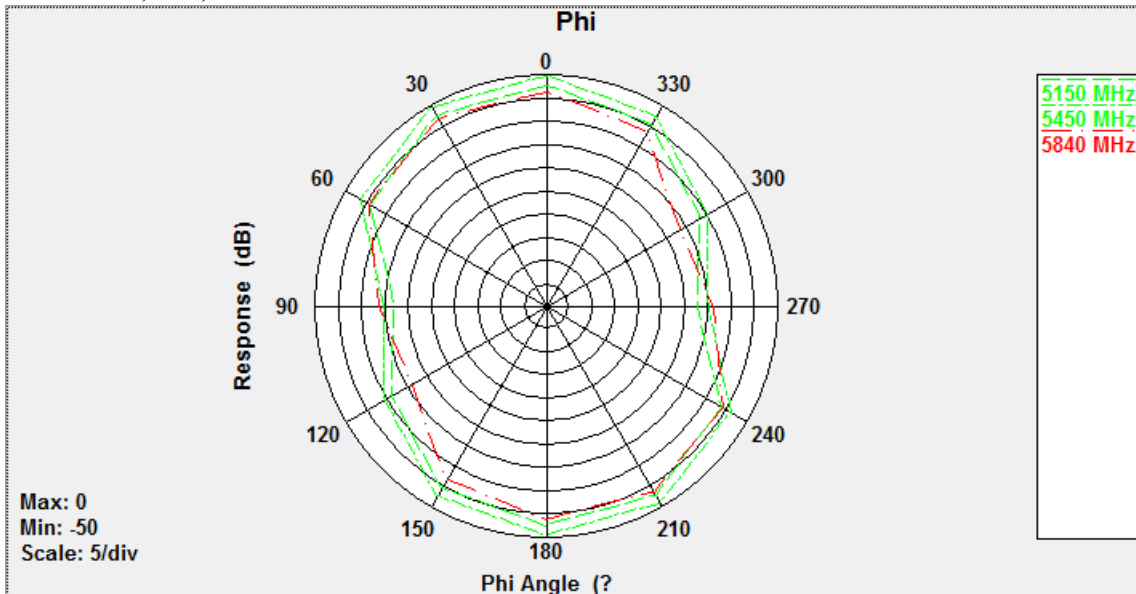
Phi90: 2410,2450,2480MHz



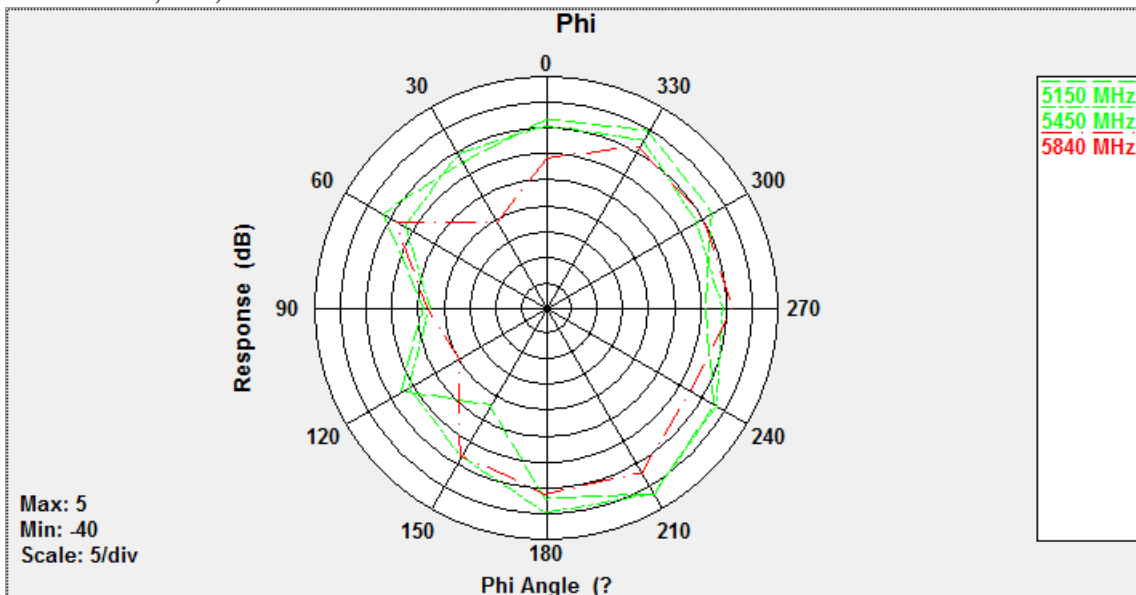
Theta90: 2410,2450,2480MHz



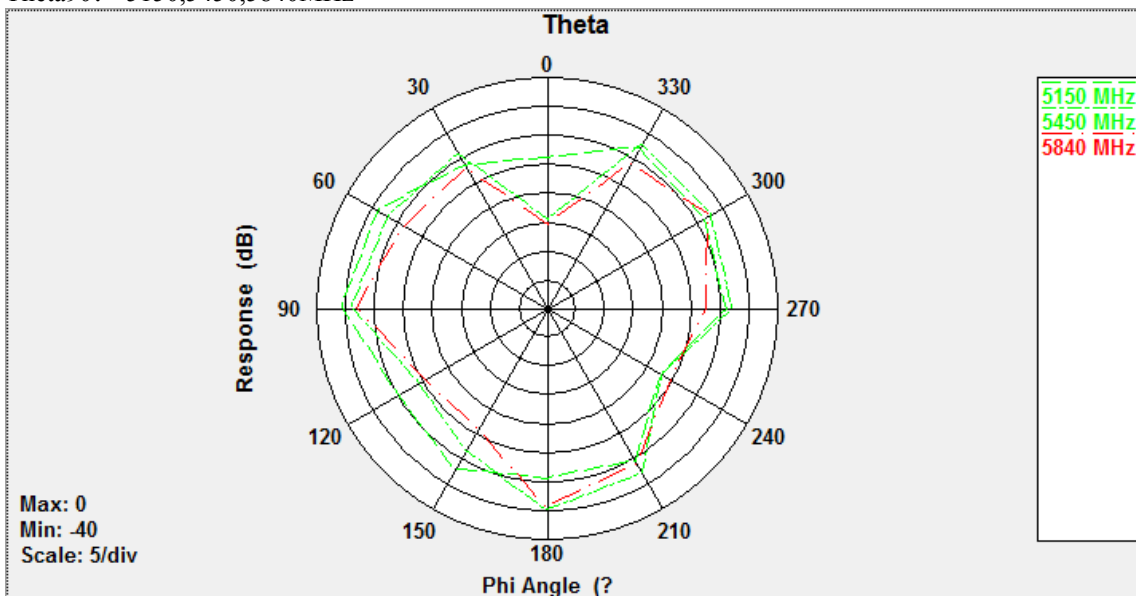
Phi0: 5150,5450,5840MHz



Phi90: 5150,5450,5840MHz



Theta90: 5150,5450,5840MHz



Instrument	Manufacturer	Model.NO	Calibration date	Test Date	Due Date
Base station	Anritsu	MT8820C	2022.03	2022.05	2023.03
Base station	Keysight	UXM E7515E	2022.01	2022.05	2023.01
Base station	R&S	CMW500	2022.02	2022.05	2023.02

NFC Antenna

Antenna Dimensions: 10inch Enlarged Area : 2700 mm²

