

SystemCheck_835MHz

D835V2-SN:4d162

Communication System: D835; Frequency: 835.0

Medium: HSL. Medium parameters used: $f = 835.0$ MHz; $\sigma = 0.914$ S/m; $\epsilon_r = 43.4$

Ambient Temperature: 23.8°C; Liquid Temperature: 22.4°C

DASY6 Configuration:

- Probe: EX3DV4 - SN7577; ConvF(9.55, 9.55, 9.55); Calibrated: 2021/11/23
- Sensor-Surface: 1.4 mm
- Electronics: DAE4 Sn1210; Calibrated: 2022/4/12
- Phantom: ELI V5.0 (20deg probe tilt); Serial: 1233; Section: Flat
- Measurement Software: cDASY6 V16.0.0.116
- UID: CW, 0--
- MAIA: Area Scan: N/A; Zoom Scan: N/A

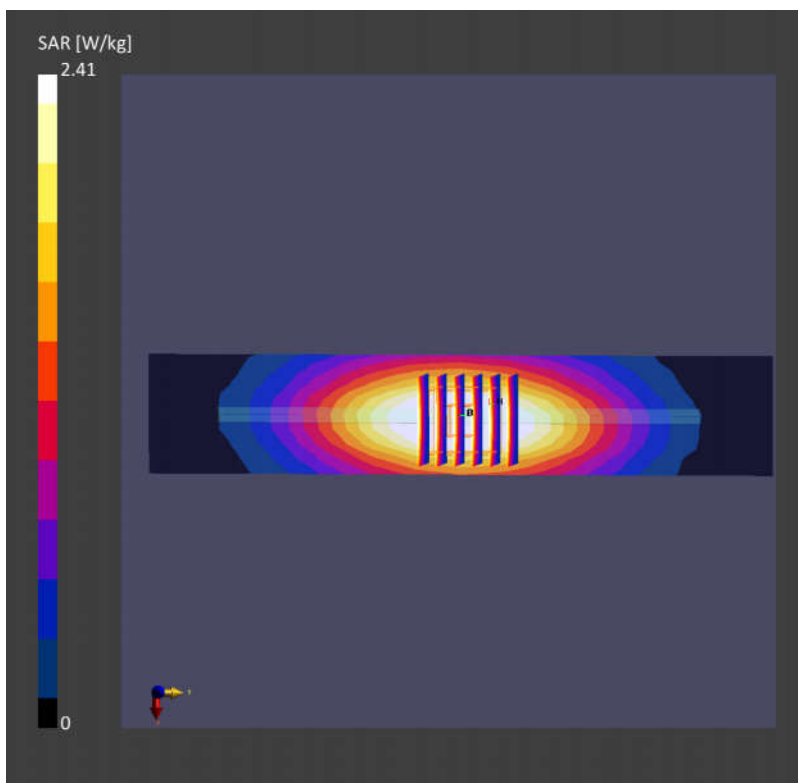
Area Scan (40.0 mm x 210.0 mm): Measurement Grid: 5.0 mm x 15.0 mm

SAR (1g) = 2.44 W/kg; SAR (10g) = 1.62 W/kg;

Zoom Scan (30.0 mm x 30.0 mm x 30.0 mm): Measurement Grid: 6.0 mm x 6.0 mm x 1.5 mm

Power Drift = 0.02 dB

SAR (1g) = 2.41 W/kg; SAR (10g) = 1.59 W/kg;



SystemCheck_2600MHz

D2600V2-SN:1070

Communication System: D2600; Frequency: 2600.0

Medium: HSL. Medium parameters used: $f=2600.0$ MHz; $\sigma=1.95$ S/m; $\epsilon_r=40.6$

Ambient Temperature: 23.8°C; Liquid Temperature: 22.8°C

DASY6 Configuration:

- Probe: EX3DV4 - SN7577; ConvF(7.68, 7.68, 7.68); Calibrated: 2021/11/23

- Sensor-Surface: 1.4 mm

- Electronics: DAE4 Sn1210; Calibrated: 2022/4/12

- Phantom: ELI V5.0 (20deg probe tilt); Serial: 1233; Section: Flat

- Measurement Software: cDASY6 V16.0.0.116

- UID: CW, 0--

- MAIA: Area Scan: N/A; Zoom Scan: N/A

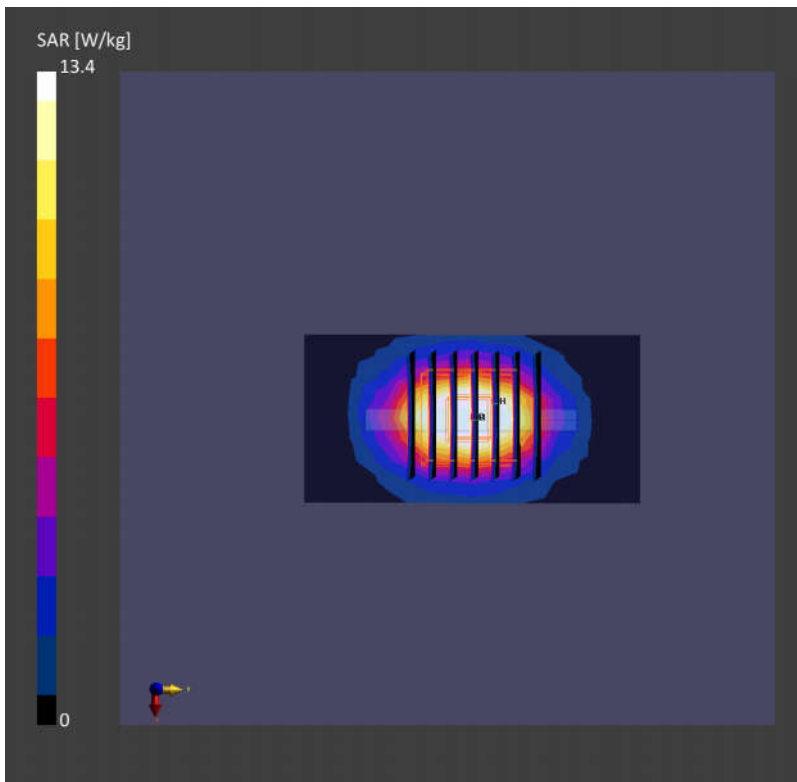
Area Scan (40.0 mm x 80.0 mm): Measurement Grid: 5.0 mm x 10.0 mm

SAR (1g) = 13.7 W/kg; SAR (10g) = 6.25 W/kg;

Zoom Scan (30.0 mm x 30.0 mm x 30.0 mm): Measurement Grid: 5.0 mm x 5.0 mm x 1.5 mm

Power Drift = -0.00 dB

SAR (1g) = 13.4 W/kg; SAR (10g) = 6.18 W/kg;



SystemCheck_3700MHz

D3700V2-SN:1037

Communication System: D3700; Frequency: 3700.0

Medium: HSL. Medium parameters used: $f=3700.0$ MHz; $\sigma=2.98$ S/m; $\epsilon_r=38.9$

Ambient Temperature: 23.5°C; Liquid Temperature: 22.3°C

DASY6 Configuration:

- Probe: EX3DV4 - SN7577; ConvF(6.49, 6.49, 6.49); Calibrated: 2021/11/23
- Sensor-Surface: 1.4 mm
- Electronics: DAE4 Sn1210; Calibrated: 2022/4/12
- Phantom: ELI V5.0 (20deg probe tilt); Serial: 1233; Section: Flat
- Measurement Software: cDASY6 V16.0.0.116
- UID: CW, 0--
- MAIA: Area Scan: N/A; Zoom Scan: N/A

Area Scan (40.0 mm x 80.0 mm): Measurement Grid: 5.0 mm x 10.0 mm

SAR (1g) = 6.79 W/kg; SAR (10g) = 2.55 W/kg;

Zoom Scan (28.0 mm x 28.0 mm x 28.0 mm): Measurement Grid: 5.0 mm x 5.0 mm x 1.4 mm

Power Drift = -0.01 dB

SAR (1g) = 6.78 W/kg; SAR (10g) = 2.57 W/kg;

