

System Check_Head_2450MHz

DUT: D2450V2 - SN:924

Communication System: UID 0, CW (0); Frequency: 2450 MHz; Duty Cycle: 1:1
Medium: HSL_2450 Medium parameters used: $f = 2450$ MHz; $\sigma = 1.805$ S/m; $\epsilon_r = 38.504$; $\rho = 1000$ kg/m³

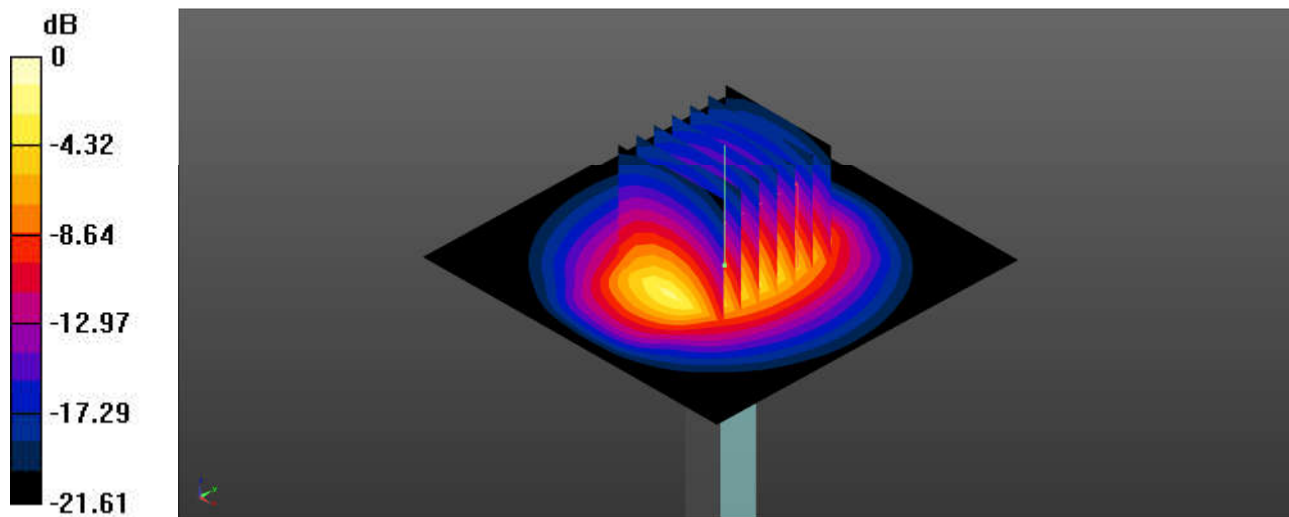
Ambient Temperature : 23.1 °C; Liquid Temperature : 22.7 °C

DASY5 Configuration:

- Probe: EX3DV4 - SN7706; ConvF(8.29, 8.29, 8.29); Calibrated: 2022/1/20
- Sensor-Surface: 1.4mm (Mechanical Surface Detection)
- Electronics: DAE4 Sn1303; Calibrated: 2021/6/18
- Phantom: ELI Phantom; Type: ELI V8.0; Serial: TP-2135
- Measurement SW: DASY52, Version 52.10 (4); SEMCAD X Version 14.6.14 (7483)

Pin=50mW/Area Scan (71x71x1): Interpolated grid: dx=1.200 mm, dy=1.200 mm
Maximum value of SAR (interpolated) = 3.60 W/kg

Pin=50mW/Zoom Scan (7x7x7)/Cube 0: Measurement grid: dx=5mm, dy=5mm, dz=5mm
Reference Value = 44.58 V/m; Power Drift = -0.02 dB
Peak SAR (extrapolated) = 4.52 W/kg
SAR(1 g) = 2.54 W/kg; SAR(10 g) = 1.23 W/kg
Maximum value of SAR (measured) = 3.61 W/kg



0 dB = 3.61 W/kg = 5.58 dBW/kg

System Check_Head_5250MHz

DUT: D5GHzV2 - SN:1113

Communication System: UID 0, CW (0); Frequency: 5250 MHz; Duty Cycle: 1:1

Medium: HSL_5000 Medium parameters used: $f = 5250$ MHz; $\sigma = 4.573$ S/m; $\epsilon_r = 35.971$; $\rho = 1000$ kg/m³

Ambient Temperature : 23.2 °C; Liquid Temperature : 22.7 °C

DASY5 Configuration:

- Probe: EX3DV4 - SN7706; ConvF(6.07, 6.07, 6.07); Calibrated: 2022/1/20
- Sensor-Surface: 1.4mm (Mechanical Surface Detection)
- Electronics: DAE4 Sn1303; Calibrated: 2021/6/18
- Phantom: ELI Phantom; Type: ELI V8.0; Serial: TP-2135
- Measurement SW: DASY52, Version 52.10 (4); SEMCAD X Version 14.6.14 (7483)

Pin=50mW/Area Scan (91x91x1): Interpolated grid: dx=1.000 mm, dy=1.000 mm
Maximum value of SAR (interpolated) = 7.21 W/kg

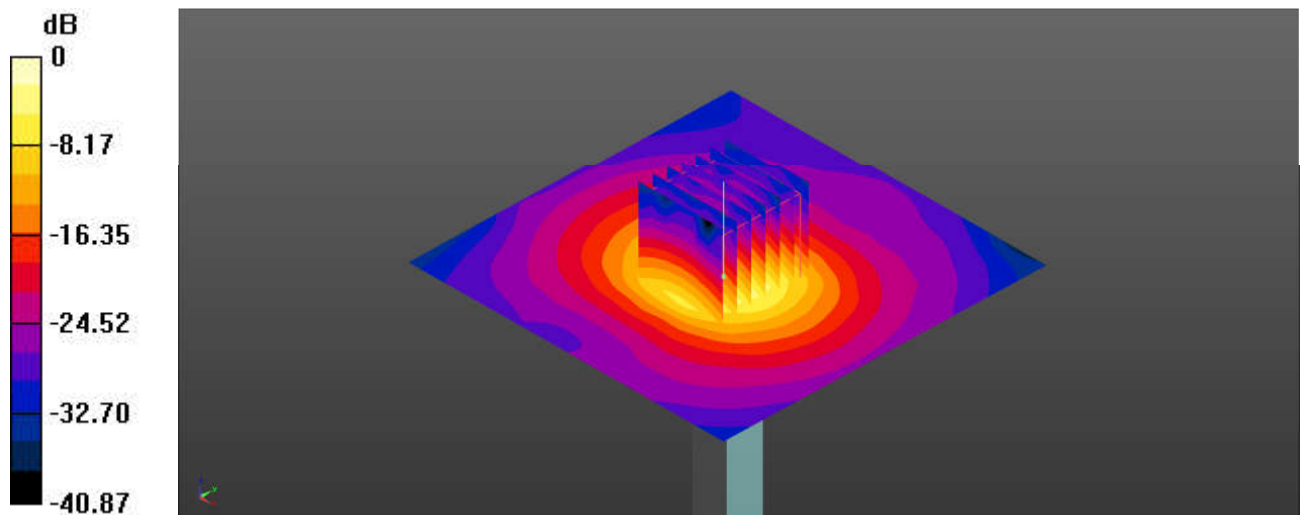
Pin=50mW/Zoom Scan (7x7x7)/Cube 0: Measurement grid: dx=4mm, dy=4mm, dz=1.4mm

Reference Value = 38.82 V/m; Power Drift = -0.06 dB

Peak SAR (extrapolated) = 11.6 W/kg

SAR(1 g) = 3.87 W/kg; SAR(10 g) = 1.11 W/kg

Maximum value of SAR (measured) = 7.48 W/kg



0 dB = 7.48 W/kg = 8.74 dBW/kg

System Check_Head_5600MHz

DUT: D5GHzV2 - SN:1113

Communication System: UID 0, CW (0); Frequency: 5600 MHz; Duty Cycle: 1:1
Medium: HSL_5000 Medium parameters used: $f = 5600$ MHz; $\sigma = 4.973$ S/m; $\epsilon_r = 35.435$; $\rho = 1000$ kg/m³

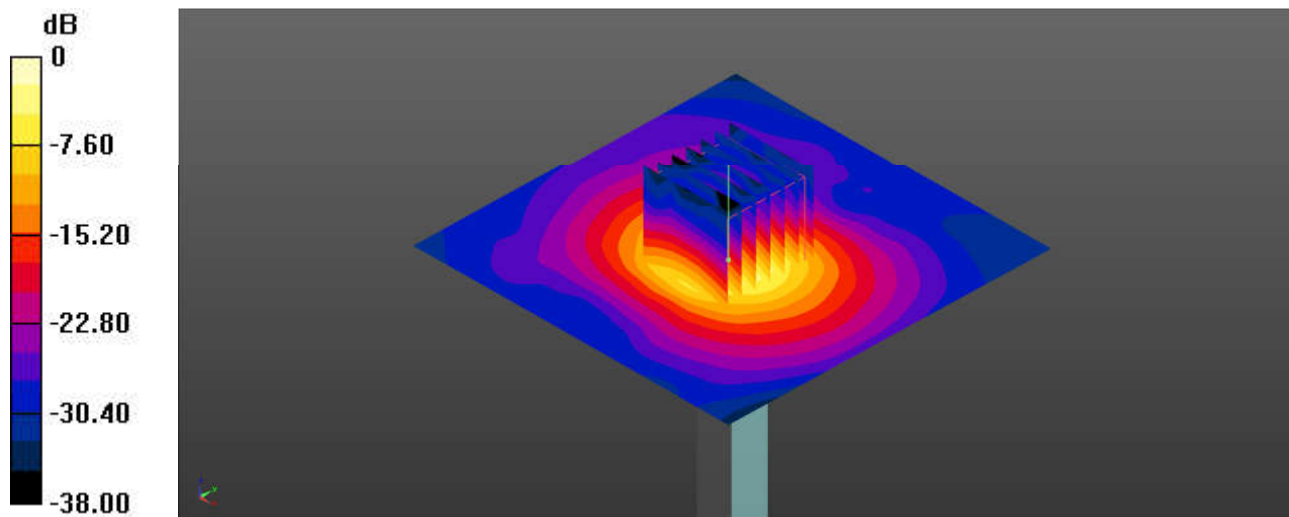
Ambient Temperature : 23.2 °C; Liquid Temperature : 22.8 °C

DASY5 Configuration:

- Probe: EX3DV4 - SN7706; ConvF(5.3, 5.3, 5.3); Calibrated: 2022/1/20
- Sensor-Surface: 1.4mm (Mechanical Surface Detection)
- Electronics: DAE4 Sn1303; Calibrated: 2021/6/18
- Phantom: ELI Phantom; Type: ELI V8.0; Serial: TP-2135
- Measurement SW: DASY52, Version 52.10 (4); SEMCAD X Version 14.6.14 (7483)

Pin=50mW/Area Scan (91x91x1): Interpolated grid: dx=1.000 mm, dy=1.000 mm
Maximum value of SAR (interpolated) = 8.21 W/kg

Pin=50mW/Zoom Scan (7x7x7)/Cube 0: Measurement grid: dx=4mm, dy=4mm, dz=1.4mm
Reference Value = 39.87 V/m; Power Drift = -0.09 dB
Peak SAR (extrapolated) = 14.2 W/kg
SAR(1 g) = 3.98 W/kg; SAR(10 g) = 1.23 W/kg
Maximum value of SAR (measured) = 8.60 W/kg



0 dB = 8.60 W/kg = 9.34 dBW/kg

System Check_Head_5750MHz

DUT: D5GHzV2 - SN:1113

Communication System: UID 0, CW (0); Frequency: 5750 MHz; Duty Cycle: 1:1
Medium: HSL_5000 Medium parameters used: $f = 5750$ MHz; $\sigma = 5.138$ S/m; $\epsilon_r = 35.246$; $\rho = 1000$ kg/m³

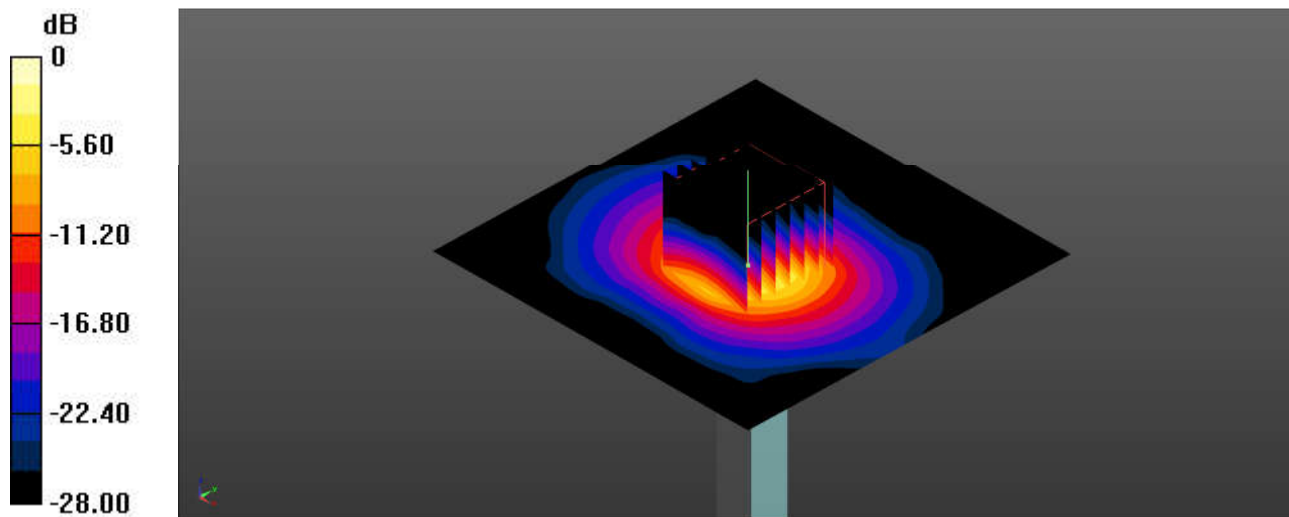
Ambient Temperature : 23.1 °C; Liquid Temperature : 22.9 °C

DASY5 Configuration:

- Probe: EX3DV4 - SN7706; ConvF(5.49, 5.49, 5.49); Calibrated: 2022/1/20
- Sensor-Surface: 1.4mm (Mechanical Surface Detection)
- Electronics: DAE4 Sn1303; Calibrated: 2021/6/18
- Phantom: ELI Phantom; Type: ELI V8.0; Serial: TP-2135
- Measurement SW: DASY52, Version 52.10 (4); SEMCAD X Version 14.6.14 (7483)

Pin=50mW/Area Scan (91x91x1): Interpolated grid: dx=1.000 mm, dy=1.000 mm
Maximum value of SAR (interpolated) = 7.59 W/kg

Pin=50mW/Zoom Scan (7x7x7)/Cube 0: Measurement grid: dx=4mm, dy=4mm, dz=1.4mm
Reference Value = 37.70 V/m; Power Drift = -0.01 dB
Peak SAR (extrapolated) = 13.5 W/kg
SAR(1 g) = 4.10 W/kg; SAR(10 g) = 1.18 W/kg
Maximum value of SAR (measured) = 7.95 W/kg



0 dB = 7.95 W/kg = 9.00 dBW/kg

System Check_Head_2450MHz

DUT: D2450V2-SN:924

Communication System: ; Frequency: 2450.0

Medium: MSL. Medium parameters used: $f= 2450.0$ MHz; $\sigma= 1.87$ S/m; $\epsilon_r = 40.8$

Ambient Temperature: 23.1°C; Liquid Temperature: 22.6°C

DASY6 Configuration:

- Probe: EX3DV4 - SN3887; ConvF(7.48, 7.48, 7.48); Calibrated: 2021-10-22
- Sensor-Surface: 1.4 mm
- Electronics: DAE4 Sn1649; Calibrated: 2022-03-30
- Phantom: ELI V8.0 (20deg probe tilt); Serial: 2151; Section: Flat
- Measurement Software: cDASY6 V6.6.0.13926

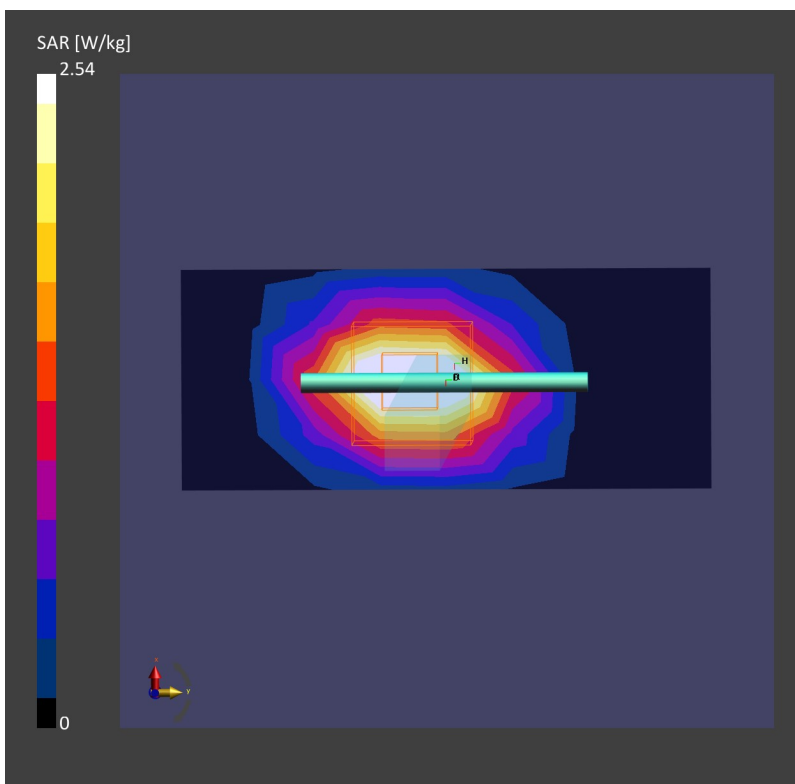
Area Scan (40.0 mm x 96.0 mm): Measurement Grid: 12.0 mm x 12.0 mm

SAR (1g) = 2.52 W/kg; SAR (10g) = 1.18 W/kg;

Zoom Scan (30.0 mm x 30.0 mm x 30.0 mm): Measurement Grid: 5.0 mm x 5.0 mm x 5.0 mm

Power Drift = 0.01 dB

SAR (1g) = 2.54 W/kg; SAR (10g) = 1.18 W/kg;



System Check_Head_5250MHz

DUT: D5GHzV2-SN:1113-5250

Communication System: ; Frequency: 5250.0

Medium: MSL. Medium parameters used: $f= 5250.0$ MHz; $\sigma= 4.64$ S/m; $\epsilon_r = 36.5$

Ambient Temperature: 23.3°C; Liquid Temperature: 22.8°C

DASY6 Configuration:

- Probe: EX3DV4 - SN3887; ConvF(4.8, 4.8, 4.8); Calibrated: 2021-10-22
- Sensor-Surface: 1.4 mm
- Electronics: DAE4 Sn1649; Calibrated: 2022-03-30
- Phantom: ELI V8.0 (20deg probe tilt); Serial: 2151; Section: Flat
- Measurement Software: cDASY6 V6.6.0.13926

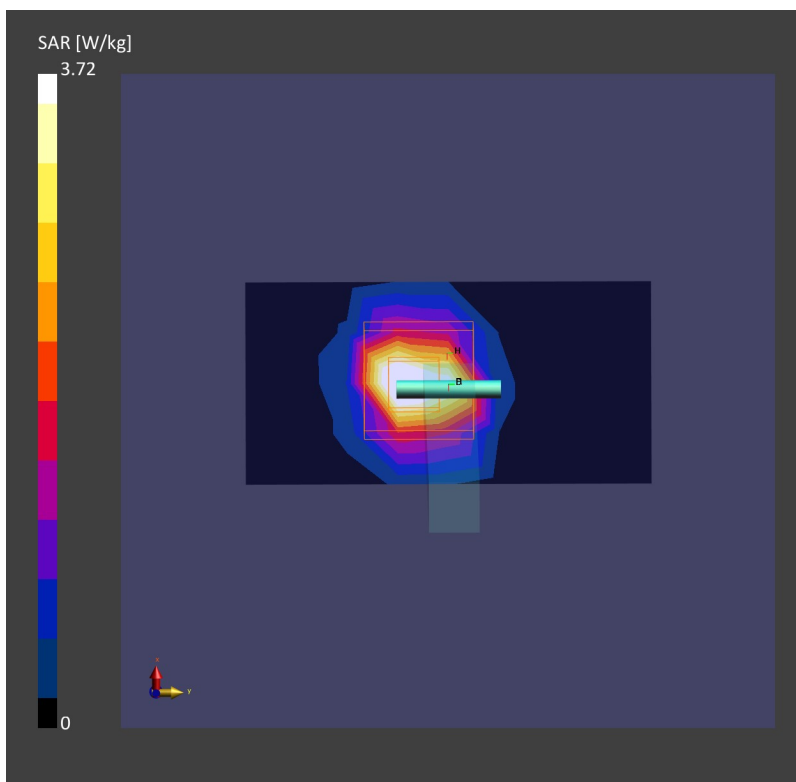
Area Scan (40.0 mm x 80.0 mm): Measurement Grid: 10.0 mm x 10.0 mm

SAR (1g) = 3.22 W/kg; SAR (10g) = 0.997 W/kg;

Zoom Scan (24.0 mm x 24.0 mm x 22.0 mm): Measurement Grid: 4.0 mm x 4.0 mm x 1.4 mm

Power Drift = -0.01 dB

SAR (1g) = 3.72 W/kg; SAR (10g) = 1.07 W/kg;



System Check_Head_5600MHz

DUT: D5GHzV2-SN:1113-5600

Communication System: ; Frequency: 5600.0

Medium: MSL. Medium parameters used: $f= 5600.0$ MHz; $\sigma= 4.99$ S/m; $\epsilon_r = 35.9$

Ambient Temperature: 23.2°C; Liquid Temperature: 22.7°C

DASY6 Configuration:

- Probe: EX3DV4 - SN3887; ConvF(4.26, 4.26, 4.26); Calibrated: 2021-10-22
- Sensor-Surface: 1.4 mm
- Electronics: DAE4 Sn1649; Calibrated: 2022-03-30
- Phantom: ELI V8.0 (20deg probe tilt); Serial: 2151; Section: Flat
- Measurement Software: cDASY6 V6.6.0.13926

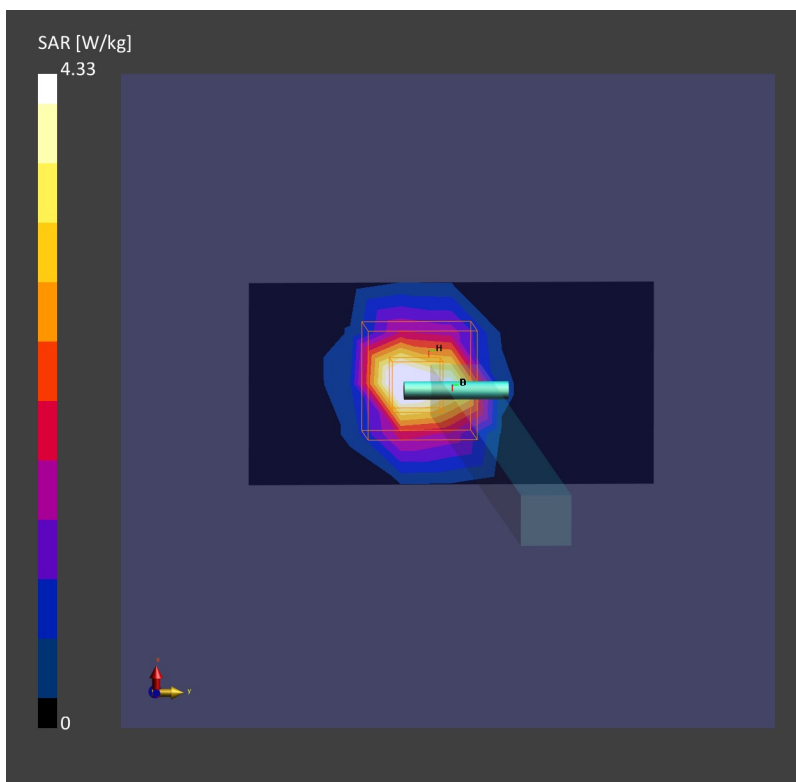
Area Scan (40.0 mm x 80.0 mm): Measurement Grid: 10.0 mm x 10.0 mm

SAR (1g) = 3.92 W/kg; SAR (10g) = 1.19 W/kg;

Zoom Scan (24.0 mm x 24.0 mm x 22.0 mm): Measurement Grid: 4.0 mm x 4.0 mm x 1.4 mm

Power Drift = -0.01 dB

SAR (1g) = 4.33 W/kg; SAR (10g) = 1.24 W/kg;



System Check_Head_5750MHz

DUT: D5GHzV2-SN:1113-5750

Communication System: ; Frequency: 5750.0

Medium: MSL. Medium parameters used: $f= 5750.0$ MHz; $\sigma= 5.21$ S/m; $\epsilon_r = 35.6$

Ambient Temperature: 23.2°C; Liquid Temperature: 22.7°C

DASY6 Configuration:

- Probe: EX3DV4 - SN3887; ConvF(4.39, 4.39, 4.39); Calibrated: 2021-10-22
- Sensor-Surface: 1.4 mm
- Electronics: DAE4 Sn1649; Calibrated: 2022-03-30
- Phantom: ELI V8.0 (20deg probe tilt); Serial: 2151; Section: Flat
- Measurement Software: cDASY6 V6.6.0.13926

Area Scan (40.0 mm x 80.0 mm): Measurement Grid: 10.0 mm x 10.0 mm

SAR (1g) = 3.43 W/kg; SAR (10g) = 1.04 W/kg;

Zoom Scan (24.0 mm x 24.0 mm x 22.0 mm): Measurement Grid: 4.0 mm x 4.0 mm x 1.4 mm

Power Drift = -0.02 dB

SAR (1g) = 3.98 W/kg; SAR (10g) = 1.13 W/kg;

