

System Check_Body_2450MHz_111102

DUT: Dipole 2450 MHz

Communication System: CW; Frequency: 2450 MHz; Duty Cycle: 1:1

Medium: MSL_2450_111102 Medium parameters used: $f = 2450$ MHz; $\sigma = 2.02$ mho/m; $\epsilon_r = 53.9$; $\rho = 1000$ kg/m³

Ambient Temperature : 22.5 °C ; Liquid Temperature : 21.5 °C

DASY4 Configuration:

- Probe: ET3DV6 - SN1788; ConvF(4.01, 4.01, 4.01); Calibrated: 2011/9/28
- Sensor-Surface: 4mm (Mechanical Surface Detection)
- Electronics: DAE3 Sn495; Calibrated: 2011/4/28
- Phantom: ELI 4.0_Front; Type: QDOVA001BB; Serial: 1026
- Measurement SW: DASY4, V4.7 Build 80; Postprocessing SW: SEMCAD, V1.8 Build 186

Pin=250mW/Area Scan (91x91x1): Measurement grid: dx=10mm, dy=10mm

Maximum value of SAR (interpolated) = 16.8 mW/g

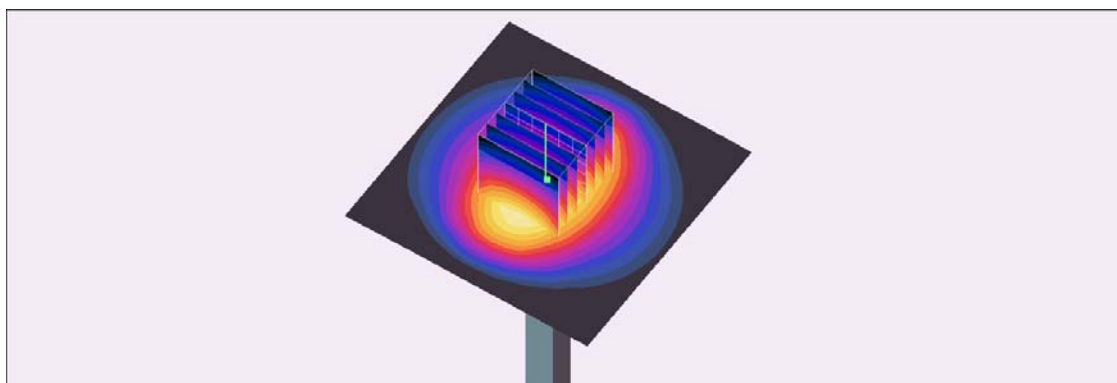
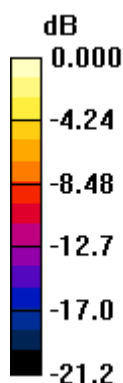
Pin=250mW/Zoom Scan (7x7x7)/Cube 0: Measurement grid: dx=5mm, dy=5mm, dz=5mm

Reference Value = 91.7 V/m; Power Drift = -0.100 dB

Peak SAR (extrapolated) = 33.2 W/kg

SAR(1 g) = 14.1 mW/g; SAR(10 g) = 6.68 mW/g

Maximum value of SAR (measured) = 15.3 mW/g



0 dB = 15.3mW/g

System Check_Body_2450MHz_111103

DUT: Dipole 2450 MHz

Communication System: CW; Frequency: 2450 MHz; Duty Cycle: 1:1

Medium: MSL_2450_111103 Medium parameters used: $f = 2450$ MHz; $\sigma = 1.96$ mho/m; $\epsilon_r = 51.5$; $\rho = 1000$

kg/m³

Ambient Temperature : 22.6 ; Liquid Temperature : 21.6

DASY5 Configuration:

- Probe: EX3DV4 - SN3792; ConvF(6.67, 6.67, 6.67); Calibrated: 2011/6/20
- Sensor-Surface: 4mm (Mechanical Surface Detection)
- Electronics: DAE3 Sn577; Calibrated: 2011/6/20
- Phantom: ELI 4.0_Front; Type: QD 0VA 002 AA; Serial: TP-1131
- ; SEMCAD X Version 13.4 Build 125

Pin=250mW/Area Scan (91x91x1): Measurement grid: dx=10mm, dy=10mm

Maximum value of SAR (interpolated) = 15.6 mW/g

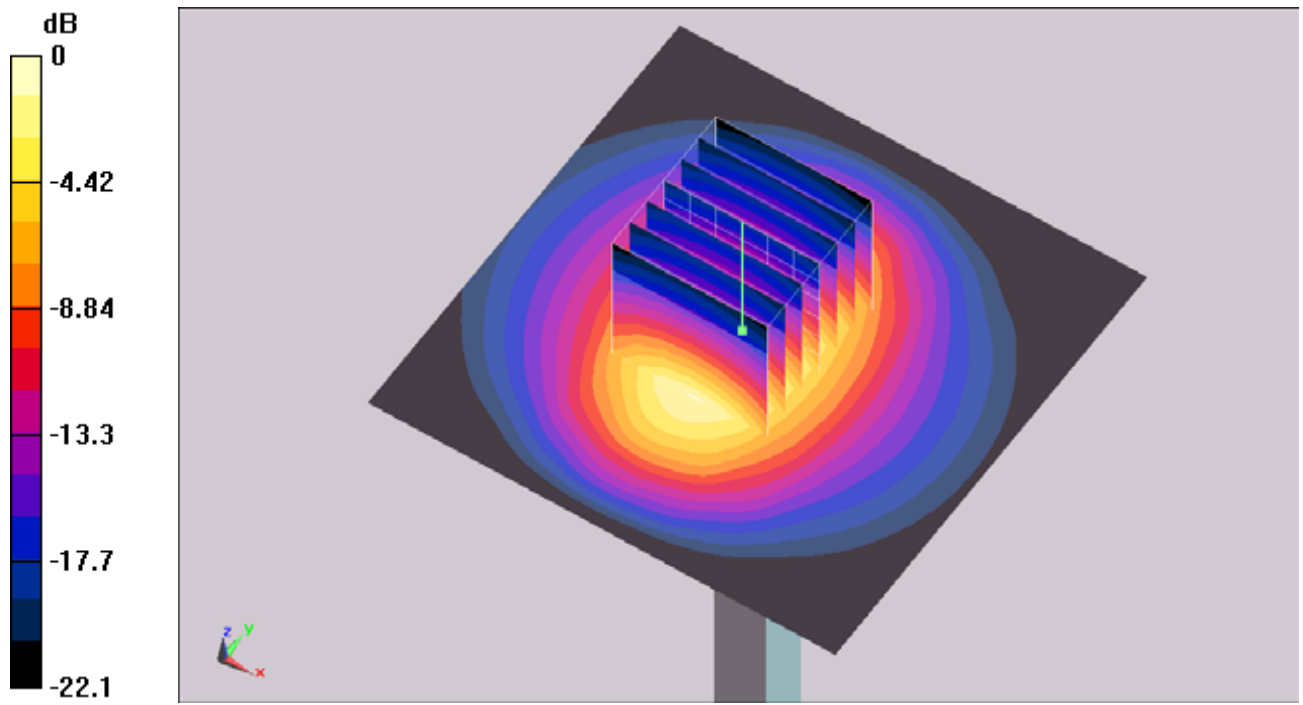
Pin=250mW/Zoom Scan (7x7x7)/Cube 0: Measurement grid: dx=5mm, dy=5mm, dz=5mm

Reference Value = 86 V/m; Power Drift = 0.143 dB

Peak SAR (extrapolated) = 30.1 W/kg

SAR(1 g) = 13.7 mW/g; SAR(10 g) = 6.53 mW/g

Maximum value of SAR (measured) = 15.2 mW/g



0 dB = 15.2mW/g

System Check_Body_5200MHz_111105

DUT: Dipole 5GHz

Communication System: CW; Frequency: 5200 MHz; Duty Cycle: 1:1

Medium: MSL_5G_111105 Medium parameters used: $f = 5200$ MHz; $\sigma = 5.28$ mho/m; $\epsilon_r = 47.6$; $\rho = 1000$

kg/m³

Ambient Temperature : 22.4 ; Liquid Temperature : 21.4

DASY5 Configuration:

- Probe: EX3DV4 - SN3792; ConvF(4.22, 4.22, 4.22); Calibrated: 2011/6/20
- Sensor-Surface: 2.5mm (Mechanical Surface Detection)
- Electronics: DAE3 Sn577; Calibrated: 2011/6/20
- Phantom: ELI 4.0; Type: QDOVA001BA; Serial: 1029
- ; SEMCAD X Version 13.4 Build 125

Pin=250mW/Area Scan (91x91x1): Measurement grid: dx=10mm, dy=10mm

Maximum value of SAR (interpolated) = 33.3 mW/g

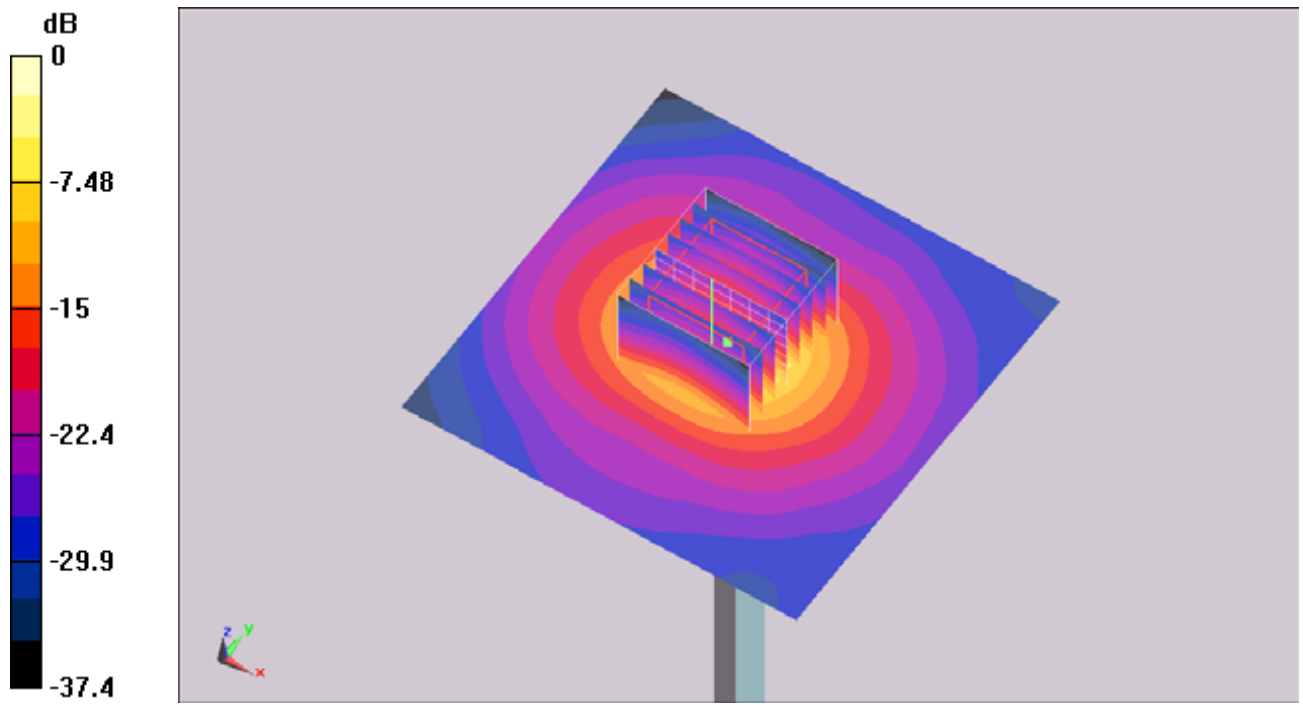
Pin=250mW/Zoom Scan (8x8x8)/Cube 0: Measurement grid: dx=4.3mm, dy=4.3mm, dz=3mm

Reference Value = 82.4 V/m; Power Drift = 0.037 dB

Peak SAR (extrapolated) = 61.2 W/kg

SAR(1 g) = 18.5 mW/g; SAR(10 g) = 5.24 mW/g

Maximum value of SAR (measured) = 30.8 mW/g



0 dB = 30.8mW/g

System Check_Body_5200MHz_111107

DUT: Dipole 5GHz

Communication System: CW; Frequency: 5200 MHz; Duty Cycle: 1:1

Medium: MSL_5G_111107 Medium parameters used: $f = 5200$ MHz; $\sigma = 5.36$ mho/m; $\epsilon_r = 48.7$; $\rho = 1000$ kg/m³

Ambient Temperature : 22.5 °C ; Liquid Temperature : 21.5 °C

DASY4 Configuration:

- Probe: EX3DV4 - SN3792; ConvF(4.22, 4.22, 4.22); Calibrated: 2011/6/20
- Sensor-Surface: 2.5mm (Mechanical Surface Detection)
- Electronics: DAE3 Sn577; Calibrated: 2011/6/20
- Phantom: ELI 4.0_Front; Type: QDOVA001BB; Serial: 1026
- Measurement SW: DASY4, V4.7 Build 80; Postprocessing SW: SEMCAD, V1.8 Build 186

Pin=250mW/Area Scan (91x91x1): Measurement grid: dx=10mm, dy=10mm

Maximum value of SAR (interpolated) = 34.3 mW/g

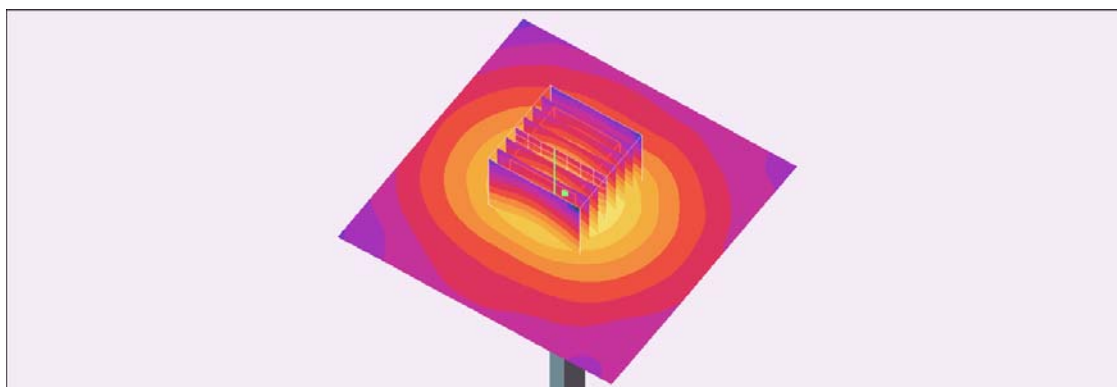
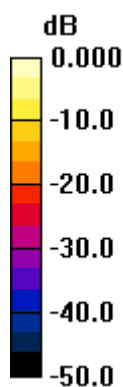
Pin=250mW/Zoom Scan (8x8x8)/Cube 0: Measurement grid: dx=4.3mm, dy=4.3mm, dz=3mm

Reference Value = 82.2 V/m; Power Drift = -0.002 dB

Peak SAR (extrapolated) = 59.7 W/kg

SAR(1 g) = 18.7 mW/g; SAR(10 g) = 5.34 mW/g

Maximum value of SAR (measured) = 31.2 mW/g



0 dB = 31.2mW/g

System Check_Body_5500MHz_111107

DUT: Dipole 5GHz

Communication System: CW; Frequency: 5500 MHz; Duty Cycle: 1:1

Medium: MSL_5G_111107 Medium parameters used: $f = 5500$ MHz; $\sigma = 5.8$ mho/m; $\epsilon_r = 48$; $\rho = 1000$ kg/m³

Ambient Temperature : 22.5 °C ; Liquid Temperature : 21.5 °C

DASY4 Configuration:

- Probe: EX3DV4 - SN3792; ConvF(3.76, 3.76, 3.76); Calibrated: 2011/6/20
- Sensor-Surface: 2.5mm (Mechanical Surface Detection)
- Electronics: DAE3 Sn577; Calibrated: 2011/6/20
- Phantom: ELI 4.0_Front; Type: QDOVA001BB; Serial: 1026
- Measurement SW: DASY4, V4.7 Build 80; Postprocessing SW: SEMCAD, V1.8 Build 186

Pin=250mW/Area Scan (91x91x1): Measurement grid: dx=10mm, dy=10mm

Maximum value of SAR (interpolated) = 40.3 mW/g

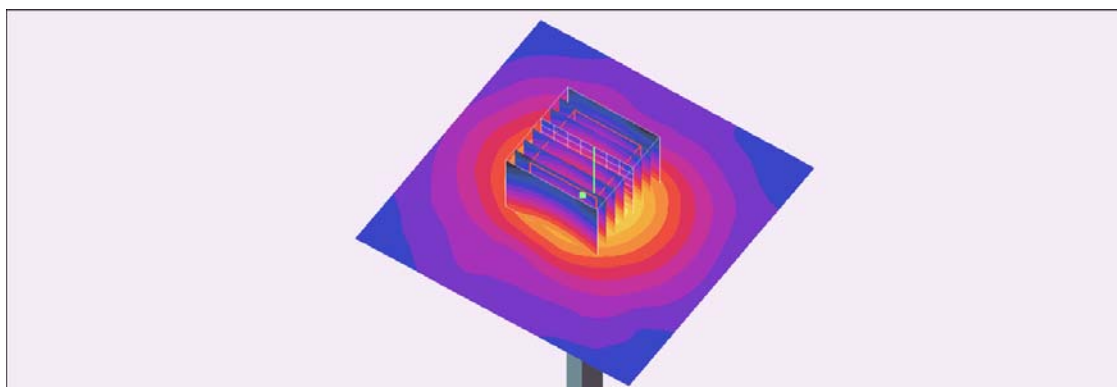
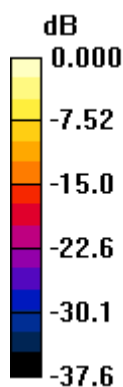
Pin=250mW/Zoom Scan (8x8x8)/Cube 0: Measurement grid: dx=4.3mm, dy=4.3mm, dz=3mm

Reference Value = 85.7 V/m; Power Drift = 0.086 dB

Peak SAR (extrapolated) = 73.1 W/kg

SAR(1 g) = 21.6 mW/g; SAR(10 g) = 6.07 mW/g

Maximum value of SAR (measured) = 38.1 mW/g



0 dB = 38.1mW/g

System Check_Body_5800MHz_111102

DUT: Dipole 5GHz

Communication System: CW; Frequency: 5800 MHz; Duty Cycle: 1:1

Medium: MSL_5G_111102 Medium parameters used: $f = 5800$ MHz; $\sigma = 6$ mho/m; $\epsilon_r = 46.6$; $\rho = 1000$

kg/m³

Ambient Temperature : 22.5 ; Liquid Temperature : 21.5

DASY5 Configuration:

- Probe: EX3DV4 - SN3792; ConvF(3.78, 3.78, 3.78); Calibrated: 2011/6/20
- Sensor-Surface: 2.5mm (Mechanical Surface Detection)
- Electronics: DAE3 Sn577; Calibrated: 2011/6/20
- Phantom: ELI 4.0; Type: QDOVA001BA; Serial: 1029
- ; SEMCAD X Version 13.4 Build 125

Pin=250mW/Area Scan (91x91x1): Measurement grid: dx=10mm, dy=10mm

Maximum value of SAR (interpolated) = 33.8 mW/g

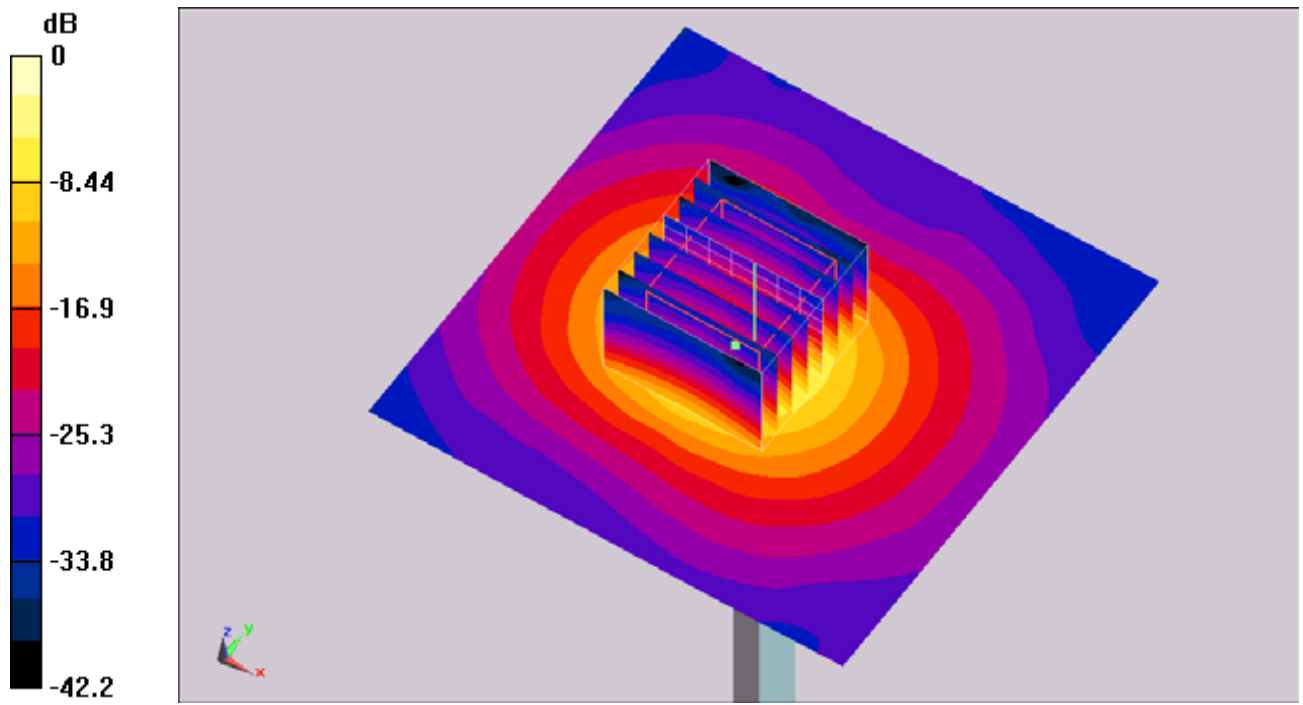
Pin=250mW/Zoom Scan (8x8x8)/Cube 0: Measurement grid: dx=4.3mm, dy=4.3mm, dz=3mm

Reference Value = 78 V/m; Power Drift = 0.148 dB

Peak SAR (extrapolated) = 83.8 W/kg

SAR(1 g) = 19.4 mW/g; SAR(10 g) = 5.52 mW/g

Maximum value of SAR (measured) = 32.9 mW/g



0 dB = 32.9mW/g

System Check_Body_5800MHz_111105

DUT: Dipole 5GHz

Communication System: CW; Frequency: 5800 MHz; Duty Cycle: 1:1

Medium: MSL_5G_111105 Medium parameters used: $f = 5800$ MHz; $\sigma = 6.17$ mho/m; $\epsilon_r = 46.5$; $\rho = 1000$

kg/m³

Ambient Temperature : 22.4 ; Liquid Temperature : 21.4

DASY5 Configuration:

- Probe: EX3DV4 - SN3792; ConvF(3.78, 3.78, 3.78); Calibrated: 2011/6/20
- Sensor-Surface: 2.5mm (Mechanical Surface Detection)
- Electronics: DAE3 Sn577; Calibrated: 2011/6/20
- Phantom: ELI 4.0; Type: QDOVA001BA; Serial: 1029
- ; SEMCAD X Version 13.4 Build 125

Pin=250mW/Area Scan (91x91x1): Measurement grid: dx=10mm, dy=10mm

Maximum value of SAR (interpolated) = 32.4 mW/g

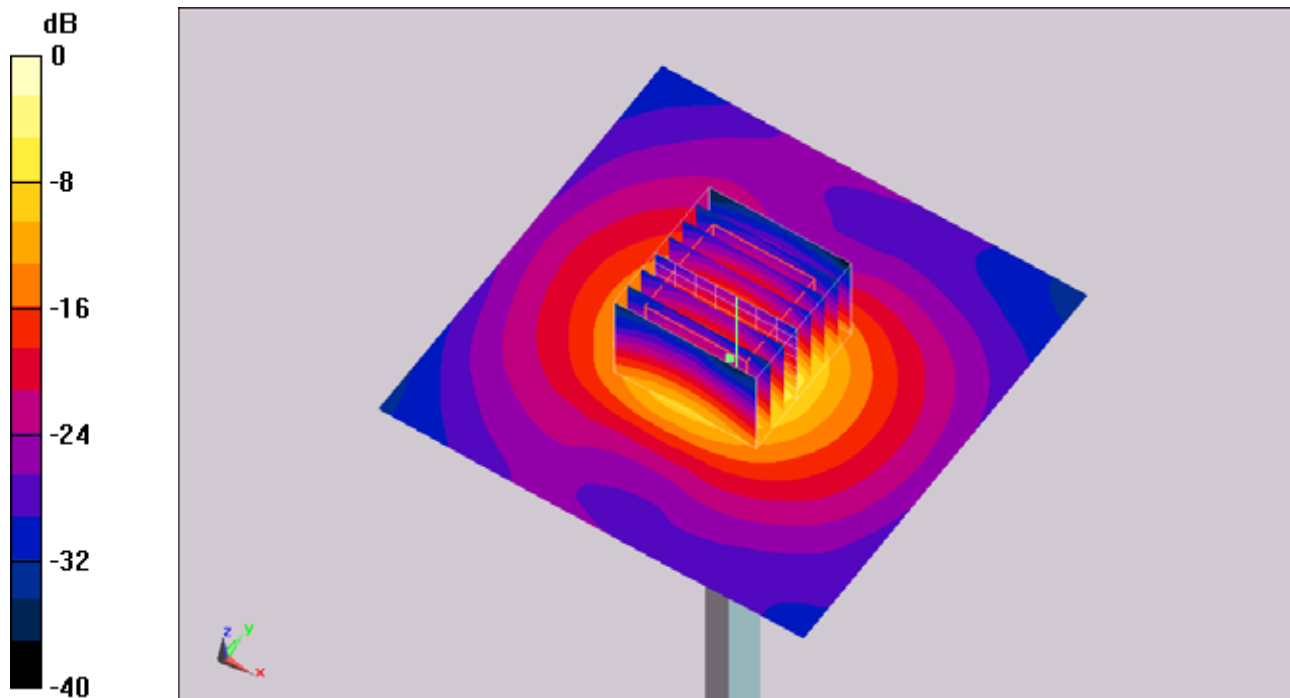
Pin=250mW/Zoom Scan (8x8x8)/Cube 0: Measurement grid: dx=4.3mm, dy=4.3mm, dz=3mm

Reference Value = 78.5 V/m; Power Drift = 0.023 dB

Peak SAR (extrapolated) = 53.1 W/kg

SAR(1 g) = 17.7 mW/g; SAR(10 g) = 5.12 mW/g

Maximum value of SAR (measured) = 29.9 mW/g



0 dB = 29.9mW/g