

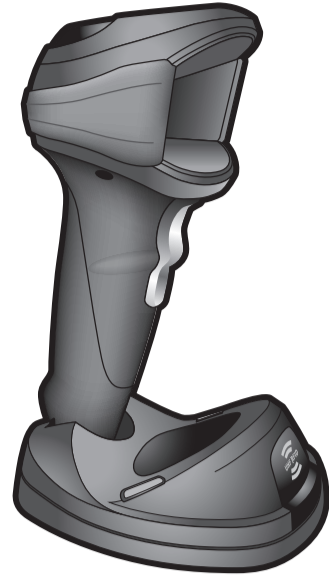
DS9908R Poster

BLACK

PANTONE 307C



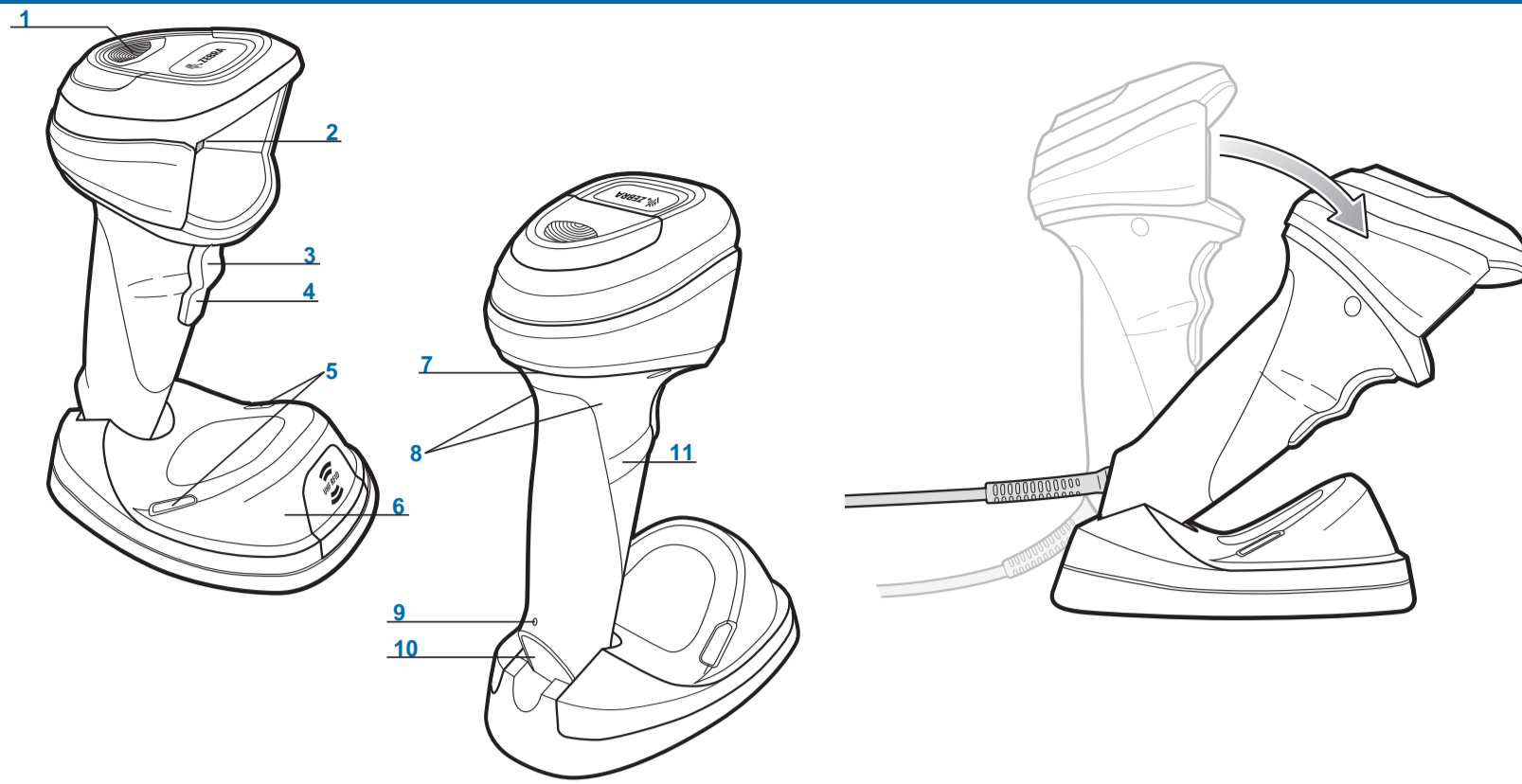
DS9908R Hands-Free Imaging Scanner



Quick Start Guide

IMPORTANT: RFID CANNOT operate until RFID Country of Operation (parameter #1553) is set to the country where the product is used. Scan the appropriate barcode in the DS9908R Hands-Free Imaging Scanner Product Reference Guide Supplement (p/n MN-003377-xx) or configure with 123Scan.

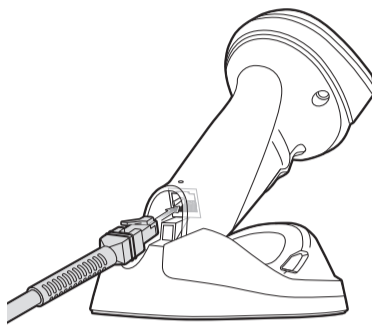
FEATURES



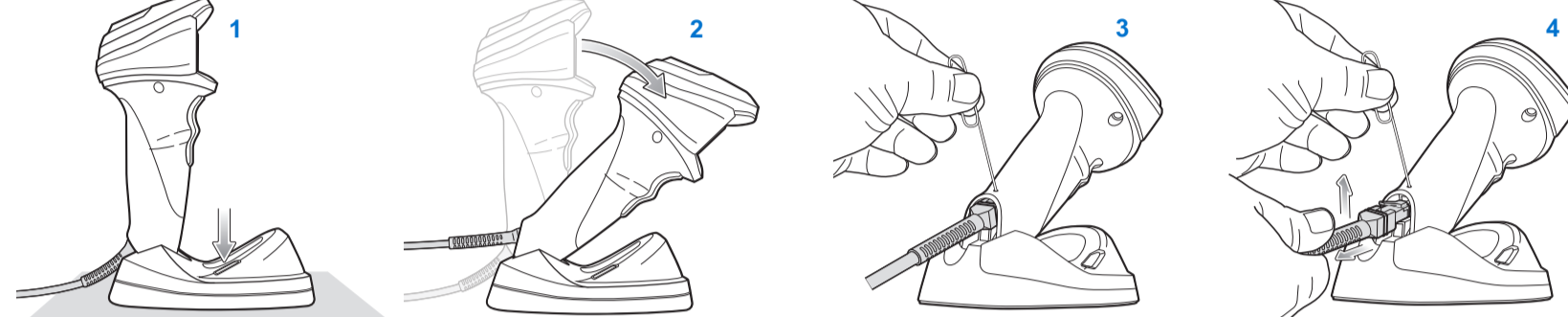
- 1 Scan LED Indicator
- 2 Scan Window
- 3 Trigger A
- 4 Trigger B
- 5 RFID LED Indicators
- 6 RFID Antenna
- 7 Speaker
- 8 Hand-held Touch Zones
- 9 Cable Release Opening (Pinhole)
- 10 Interface Cable Port
- 11 Finger Ridge

See Product Reference Guide Supplement for detailed RFID information
See Product Reference Guide for detailed imaging information
www.zebra.com/ds9900seriesretail
www.zebra.com/ds9900serieslab

CABLE INSERTION

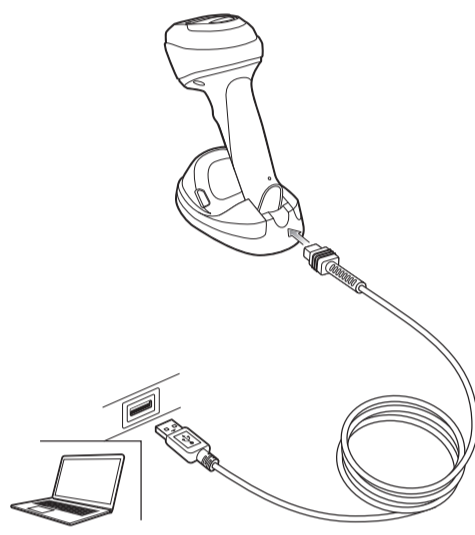


CABLE REMOVAL



STEP 1 - CONNECT HOST INTERFACE

USB



USB

Scan **ONE** of the barcodes below
The imager automatically detects the host interface type and uses the default setting. If the default (*) does not meet your requirements, scan another host barcode below.



*USB KEYBOARD (HID)



IBM HAND-HELD USB

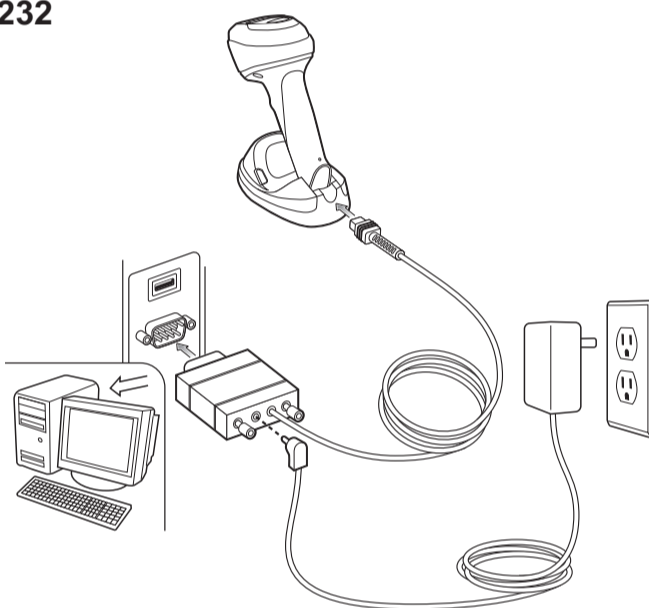


OPOS (IBM HAND-HELD with FULL DISABLE)



SNAPI WITH IMAGING

RS-232



RS-232

Scan **ONE** of the barcodes below
The imager automatically detects the host interface type and uses the default setting. If the default (*) does not meet your requirements, scan another host barcode below.



*STANDARD RS-232



ICL RS-232



NIXDORF RS-232 MODE B



NIXDORF RS-232 MODE A

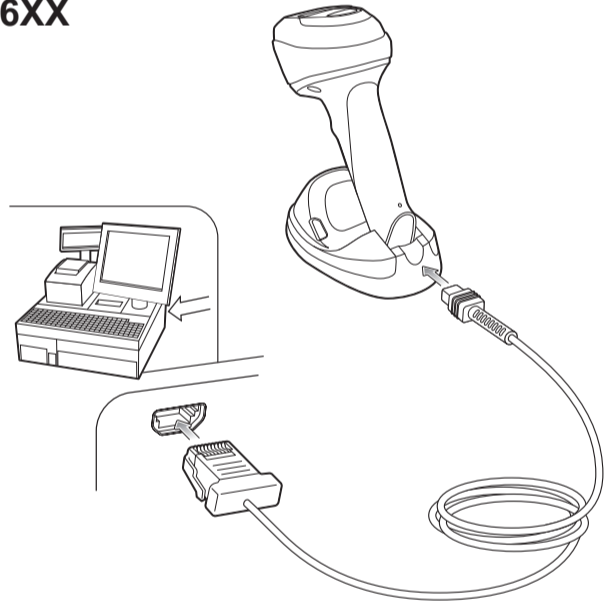


OPOS/JPOS



FUJITSU RS-232

IBM 46XX



IBM 46XX

Scan **ONE** of the barcodes below
The imager automatically detects the host interface type, but there is no default setting. Scan one of the barcodes below to select the appropriate port.



NON-IBM SCANNER EMULATION (PORT 5B)



TABLE-TOP SCANNER EMULATION (PORT 17)



HAND-HELD SCANNER EMULATION (PORT 9B)

RFID SAME TAG TIMEOUT



DISABLE



*2 SECONDS



5 MINUTES

RFID TRIGGER MODES



CONTINUOUS



*CONTINUOUS RE-REPORT



SINGLE TAG



CONTINUOUS FLUSH

RFID DATA TRANSMISSION FORMAT



RAW



EPC URI



GS1-128

SET DEFAULTS / ENTER KEY

Set Defaults



RETURN TO FACTORY DEFAULTS

Add An Enter Key (Carriage Return/Line Feed)

To add an Enter key after scanned data, scan the barcode below.



ADD AN ENTER KEY (CARRIAGE RETURN/LINE FEED)

TAB KEY

Add A Tab Key

To add a Tab key after scanned data, scan the barcode below.



ADD A TAB KEY

USB CAPS LOCK OVERRIDE



USB - OVERRIDE CAPS LOCK KEY (ENABLE)



*USB - DO NOT OVERRIDE CAPS LOCK KEY (DISABLE)