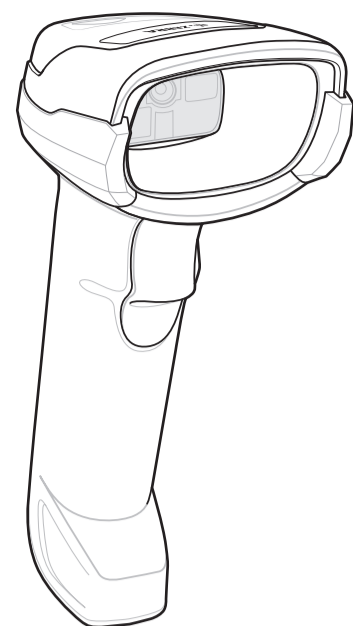


# DS2278 DIGITAL SCANNER

# USEFUL BAR CODES

# DIGITAL SCANNER FEATURES

<http://www.zebra.com/DS2278>



Digital Scanner

## Quick Start Guide



### FACTORY DEFAULTS



RETURN TO FACTORY DEFAULTS

### ADD AN ENTER KEY (Carriage Return/Line Feed)

To add an Enter key after scanned data, scan the bar code below.



ADD AN ENTER KEY (CARRIAGE RETURN/LINE FEED)

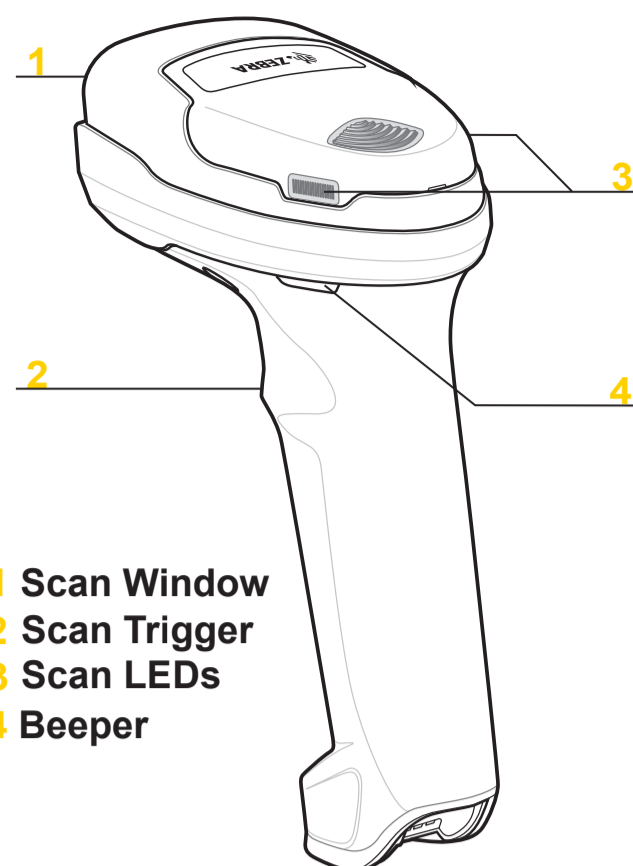
### ADD A TAB KEY

To add a Tab key after scanned data, scan the bar code below.



ADD A TAB KEY

Note: Standard range digital scanner pictured.

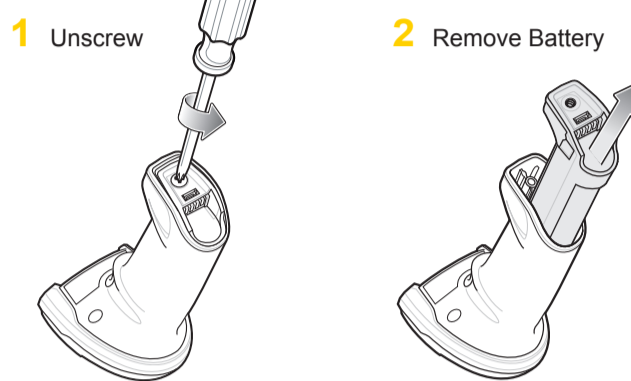


- 1 Scan Window
- 2 Scan Trigger
- 3 Scan LEDs
- 4 Beeper

See Product Reference Guide for detailed information

## BATTERY REMOVAL

Note: It is recommended to fully charge the battery before use.



## USB CAPS LOCK OVERRIDE BAR CODE

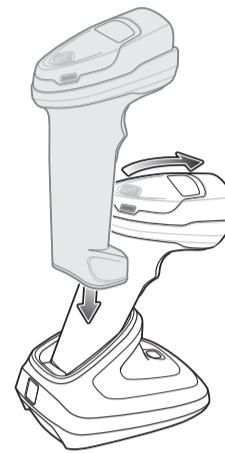


USB - OVERRIDE CAPS LOCK KEY (ENABLE)

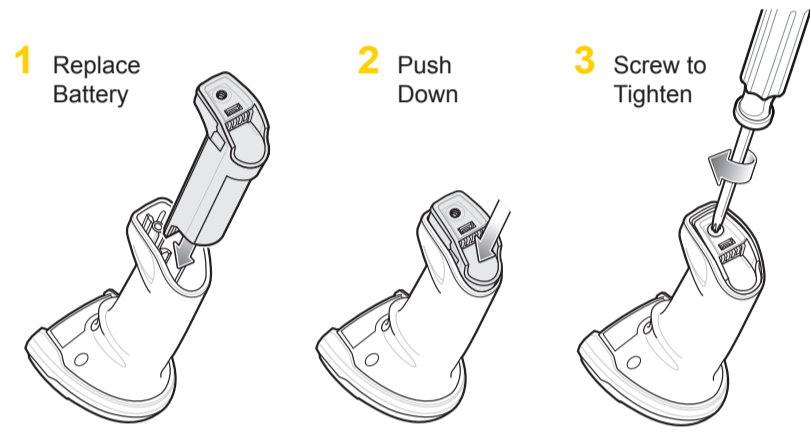


\*USB - DO NOT OVERRIDE CAPS LOCK KEY (DISABLE)

## CRADLE INSERTION

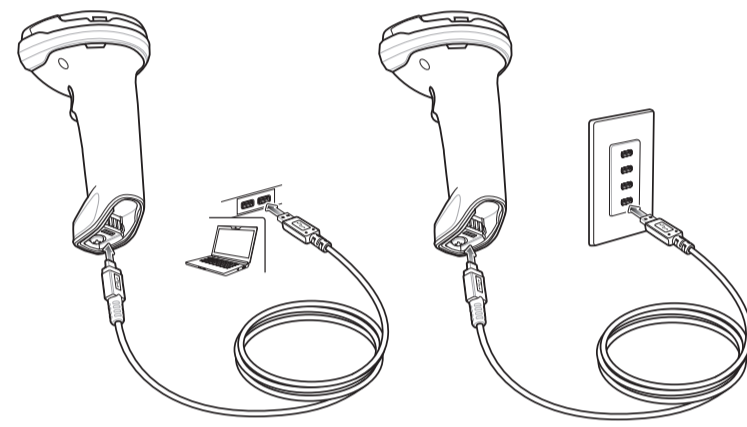


## BATTERY INSERTION

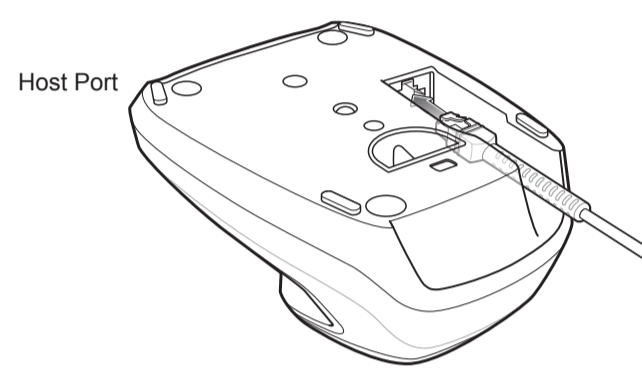


## CHARGE ONLY MICRO USB CONNECTION

Note: For best performance, it is recommended to use Zebra accessories.

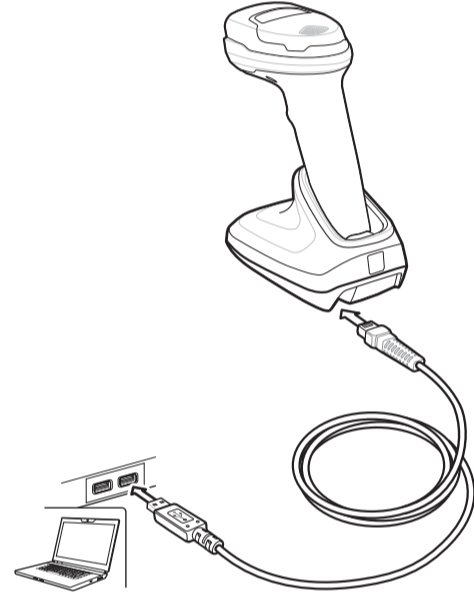


## CRADLE CABLE CONNECTION



## STEP 1 - CONNECT HOST INTERFACE

### USB



NOTE: Cables may vary depending on configuration

## STEP 2 - SET UP INTERFACE (Scan Host Bar Codes)

### USB

Scan **ONE** of the bar codes below

The interface cable automatically detects the host interface type and uses the default setting. If the default (\*) does not meet your requirements, scan another host bar code below.



\*USB KEYBOARD (HID)



IBM HAND-HELD USB

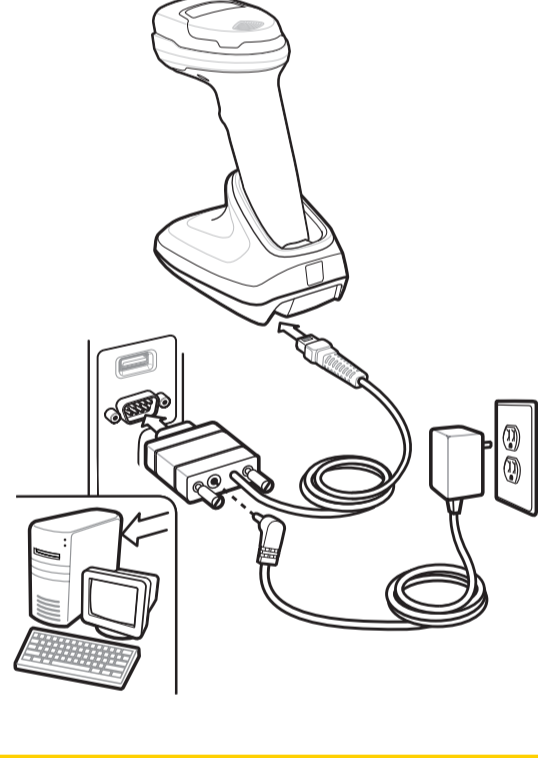


OPOS (IBM HAND-HELD with FULL DISABLE)



SYMBOL NATIVE API (SNAPI) WITH IMAGING

### RS-232



### RS-232

Scan **ONE** of the bar codes below

The interface cable automatically detects the host interface type and uses the default setting. If the default (\*) does not meet your requirements, scan another host bar code below.



\*STANDARD RS-232



NIXDORF RS-232 MODE B



ICL RS-232



FUJITSU RS-232

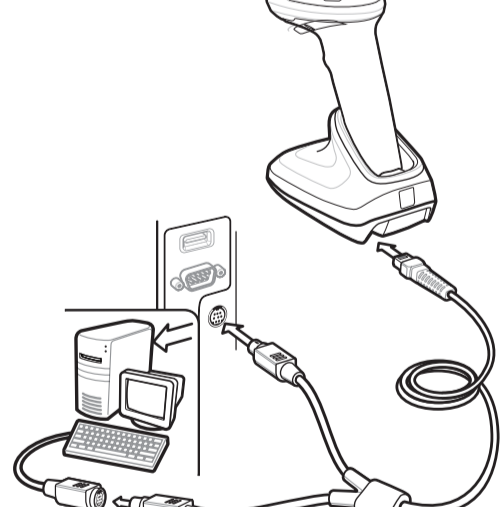


NIXDORF RS-232 MODE A



OPOS/JPOS

## KEYBOARD WEDGE



### Keyboard Wedge

Scan a bar code below

The Auto-Host Detect Cable feature automatically detects the host interface type and uses the default setting. If the default (\*) does not meet your requirements, scan the IBM PC/AT and IBM PC COMPATIBLE bar code below.

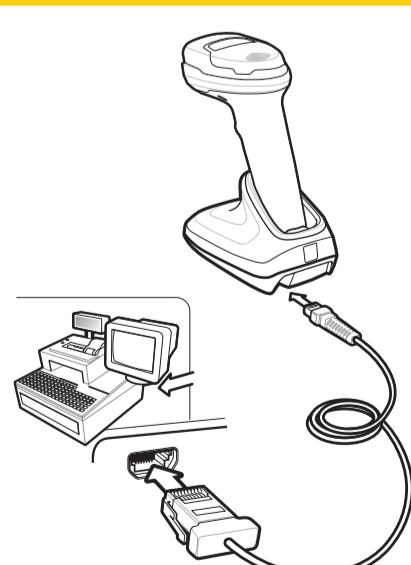


\*IBM AT NOTEBOOK



IBM PC/AT and IBM PC COMPATIBLE

### IBM 46XX



### IBM 46XX

Scan **ONE** of the bar codes below

The Auto-Host Detect Cable feature automatically detects the host interface type, but there is no default setting. Scan one of the bar codes below to select the appropriate port.



NON-IBM SCANNER EMULATION (PORT 5B)



TABLE-TOP SCANNER EMULATION (PORT 17)



HAND-HELD SCANNER EMULATION (PORT 9B)

## 123Scan

### ABOUT 123Scan

123Scan is an easy-to-use, PC-based software tool that enables rapid and easy customized setup of a scanner via a bar code or USB cable. For more information, visit: <http://www.zebra.com/123Scan>.

### UTILITY FUNCTIONALITY

- Device configuration
- Electronic programming (USB cable)
- Programming bar code(s)
- Data view - scan log (display scanned bar code data)
- Access asset tracking information
- Upgrade firmware and view release notes
- Remote management (SMS package generation)

## Aiming



0 1 2 3 4 5



0 1 2 3 4 5

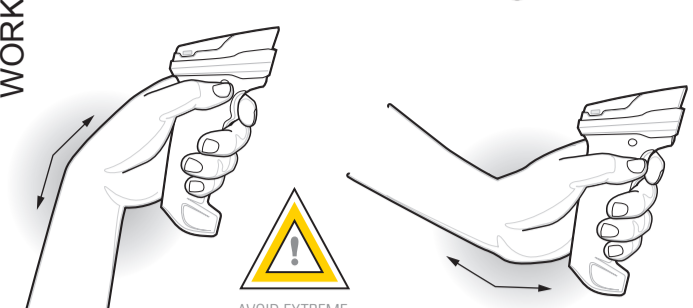


# DS2278 DIGITAL SCANNER

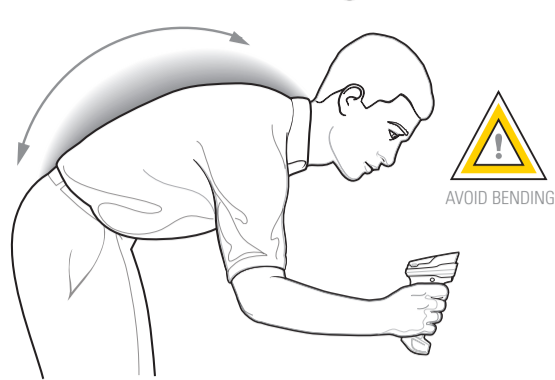
## RECOMMENDED USAGE GUIDE - OPTIMUM BODY POSTURE

POST IN WORK AREA

### Avoid Extreme Wrist Angles



### Avoid Bending



### Avoid Reaching



### Health and Safety Recommendation

- Ergonomic Recommendations**
- Caution: In order to avoid or minimize the potential risk of ergonomic injury follow the recommendations below. Consult with your local Health & Safety Manager to ensure that you are adhering to your company's safety programs to prevent employee injury.
- Reduce or eliminate repetitive motion
  - Maintain a natural position
  - Reduce or eliminate excessive force
  - Reduce or eliminate vibration
  - Perform tasks at correct heights
  - Keep objects that are used frequently within easy reach
  - Reduce or eliminate direct pressure
  - Provide adjustable workstations
  - Provide adequate clearance
  - Provide a suitable working environment
  - Improve work procedures.

## BEEPER INDICATIONS

Indication	Beeper Sequence
Power up	Low/medium/high beeps
Bar code decoded	Medium beep
Transmission error detected; data is ignored	4 long low beeps
Successful parameter setting	High/low/high/low beeps
Correct programming sequence performed	High/low beeps
Incorrect programming sequence, or Cancel bar code scanned	Long low/long high beeps
Low battery indication (on trigger release)	4 short high beeps

## SCANNER LED INDICATIONS

Hand-Held Scanning	
Indication	LED Indicator
Digital scanner is on and ready to scan, or no power to scanner	Off
Bar code is successfully decoded	Green flash
Transmission error	Red
Hands-Free (Presentation) Scanning	
No power to scanner	Off
Digital scanner is ready to scan	Green
Bar code is successfully decoded	Off momentarily
Transmission error	Red
Charging with Micro USB Connection	
Digital scanner is charging	Green flash (fast continuous)
Digital scanner is fully charged	Green (solid)
Charge error	Red (solid)

Cradle Indication	Cradle LED Indicator
Standard Use	
Power up	Green (stays on)
Radio Indications	
Bluetooth connection established	Green (off, then on)
Battery Indications	
Charging	Amber blinking
Fully charged	Green (solid)
Charging error	Amber fast blinking

Local Contact: \_\_\_\_\_

## TROUBLESHOOTING

Digital scanner not working	
No power to scanner	Check system power; ensure battery is charged.
Digital scanner is not working	Ensure that correct host interface cable is used.
Digital scanner decoding bar code, but data not transmitting to host	
Host interface not configured properly	Scan appropriate host parameter bar codes.
Interface cable is loose	Ensure all cable connections are secure.
Invalid ADF Rule	Program the correct ADF rules.
Digital scanner not paired to cradle	Scan cradle pairing bar code.

Digital scanner not decoding bar code	
Digital scanner not programmed for bar code type	Ensure scanner is programmed to read type of bar code being scanned.
Bar code unreadable	Ensure bar code is not defaced; try scanning test bar code of same bar code type.
Distance between scanner and bar code incorrect	Move scanner closer to, or further from bar code.
Scanned data incorrectly displayed on host	
Host interface not configured properly	Scan appropriate host parameter bar codes.
Region improperly configured	Select appropriate country and language encoding scheme.

## REGULATORY INFORMATION

© 2017 Zebra Technologies, Inc.

Zebra reserves the right to make changes to any product to improve reliability, function, or design. Zebra does not assume any product liability arising out of, or in connection with, the application or use of any product, circuit, or application described herein. No license is granted, either expressly or by implication, estoppel, or otherwise under any patent right or patent, covering or relating to any combination, system, apparatus, machine, material, method, or process in which Zebra products might be used. An implied license exists only for equipment, circuits, and subsystems contained in Zebra products.

### Warranty

For the complete Zebra hardware product warranty statement, go to: <http://www.zebra.com/warranty>.

### For Australia Only

This warranty is given by Zebra Technologies Asia Pacific Pte. Ltd., 71 Robinson Road, #05-02/03, Singapore 068895, Singapore. Our goods come with guarantees that cannot be excluded under the Australian Consumer Law. You are entitled to a replacement or refund for a major failure and compensation for any other reasonably foreseeable loss or damage. You are also entitled to have the goods repaired or replaced if the goods fail to be of acceptable quality and the failure does not amount to a major failure. Zebra Technologies Corporation Australia's limited warranty above is in addition to any rights and remedies you may have under the Australian Consumer Law. If you have any queries, please call Zebra Technologies Corporation at +65 6556 0722. You may also visit our website: <http://www.zebra.com> for the most updated warranty terms.

### Service Information

If you have a problem using the equipment, contact your facility's Technical or Systems Support. If there is a problem with the equipment, they will contact the Zebra Global Customer Support Center at: <http://www.zebra.com/support>. For the latest version of this guide go to: <http://www.zebra.com/support>.

### Waste Electrical and Electronic Equipment (WEEE)

**English:** For EU Customers: All products at the end of their life must be returned to Zebra for recycling. For information on how to return product, please go to: <http://www.zebra.com/weee>.

**Bulgarian:** За клиентите от ЕС: След края на ползването във всички продукти трябва да се връщат на Zebra за рециклиране. За информация относно връщането на продукти, моля отидете на адрес: <http://www.zebra.com/weee>.

**Čeština:** Pro zákazníky z EU: Všechny produkty je nutné po skončení jejich životnosti vrátit společnosti Zebra k recyklaci. Informace o způsobu vrácení produktu najdete na webové stránce: <http://www.zebra.com/weee>.

**Dansk:** Til kunder i EU: Alle produkter skal returneres til Zebra til recirkulering, når de er udtjent. Læs oplysningerne om returnering af produkter på: <http://www.zebra.com/weee>.

**Deutsch:** Für Kunden innerhalb der EU: Alle Produkte müssen am Ende ihrer Lebensdauer zum Recycling an Zebra zurückgeschickt werden. Informationen zur Rücksendung von Produkten finden Sie unter <http://www.zebra.com/weee>.

**Ελληνικά:** Για πελάτες στην Ε.Ε.: Όλα τα προϊόντα, στο τέλος της διάρκειας ζωής τους, πρέπει να επιστρέφονται στην Zebra για ανακύκλωση. Για περισσότερες πληροφορίες σχετικά με την επιστροφή ενός προϊόντος, επισκεφθείτε τη διεύθυνση <http://www.zebra.com/weee> στο διαδίκτυο.

**Eesti:** El klientidele: kõik tooted tuleb nende eluaja lõppedes tagastada taaskasutamise eesmärgil Zebra'le. Lisainformatsiooni saamiseks loote tagastamise kohta külastage palun aadressi: <http://www.zebra.com/weee>.

**Español:** Para clientes en la Unión Europea: todos los productos deberán entregarse a Zebra al final de su ciclo de vida para que sean reciclados. Si desea más información sobre cómo devolver un producto, visite: <http://www.zebra.com/weee>.

**France:** Clients de l'Union Européenne : Tous les produits en fin de cycle de vie doivent être retournés à Zebra pour recyclage. Pour de plus amples informations sur le retour de produits, consultez : <http://www.zebra.com/weee>.

**Italiano:** per i clienti dell'UE: tutti i prodotti che sono giunti al termine del rispettivo ciclo di vita devono essere restituiti a Zebra al fine di consentire il riciclaggio. Per informazioni sulle modalità di restituzione, visitate il seguente sito Web: <http://www.zebra.com/weee>.

**Latviešu:** ES klientiem: visi produkti pēc to kalpošanas mūža beigām ir jānododā atpakaļ Zebra otrreizējai pārstrādei. Lai iegūtu informāciju par produktu noārdāšanu Zebra, lūdz, skatiet: <http://www.zebra.com/weee>.

**Lietuvių:** ES vartotojams: visi gaminiai, pasibaigus jų eksploatacijos laikui, turi būti grąžinti utilizuoti į kompaniją Zebra. Daugiau informacijos, kaip grąžinti gaminį, rasite: <http://www.zebra.com/weee>.

**Magyar:** Az EU-ban vásárlóknak: Minden tonkermék terméket a Zebra vállalatához kell eljuttatni újrahaznosítás céljából. A termék visszajuttatásának módjával kapcsolatos tudnivalókat látogasson el a <http://www.zebra.com/weee> weboldallra.

**Mal:** Ghal klieniti di UE: i-prodotti kollha il jkun waslu f'ahar tal-hajta ta' l-użu tagħhom, l-idu jgu ritornati għand Zebra għar-rikkliġ. Għal aktar taġġir dwar kif għandek tirturna l-prodotti, jekk jogħġbok zur: <http://www.zebra.com/weee>.

**Nederlands:** Voor klanten in de EU: alle producten dienen aan het einde van hun levensduur naar Zebra te worden teruggezonden voor recycling. Raadpleeg <http://www.zebra.com/weee> voor meer informatie over het terugzenden van producten.

**Polski:** Klientów z obszaru Unii Europejskiej: Produkty wycofané eksploatacji należy zwrócić do firmy Zebra w celu ich utylizacji. Informacje na temat zwrotu produktów znajdź/ się na stronie internetowej <http://www.zebra.com/weee>.

**Português:** Para clientes da UE: todos os produtos no fim de vida devem ser devolvidos à Zebra para reciclagem. Para obter informações sobre como devolver o produto, visite: <http://www.zebra.com/weee>.

**Românesc:** Pentru clienții din UE: Toate produsele, la sfârșitul duratei lor de funcționare, trebuie returnate la Zebra pentru reciclare. Pentru informații despre returnarea produsului, accesați: <http://www.zebra.com/weee>.

**Slovenčina:** Pre zákazníkov z krajín EU: Všetky výrobky musia byť po uplynutí doby ich životnosti vrátené spoločnosti Zebra na recykláciu. Blíže informácie o vrátení výrobkov nájdete na: <http://www.zebra.com/weee>.

**Slovenski:** Za kupce v EU: vsi izdelki se morajo po poteku življenjske dobe vrniti podjetju Zebra za reciklazo. Za informacije o vračilu izdelka obiščite: <http://www.zebra.com/weee>.

**Suomi:** Asiakkaiden Euroopan unionin alueella: Kaikki tuotteen on palautettava kierrättäväksi Zebra-yhtiön, kun tuotetta ei enää käytetä. Lisätietoja tuotteen palauttamisesta on osoitteessa <http://www.zebra.com/weee>.

**Svenska:** För kunder inom EU: Alla produkter som uppnått sitt livslängd måste returneras till Zebra för återvinning. Information om hur du returnerar produkten finns på <http://www.zebra.com/weee>.

**Türkçe:** AB Müşterileri için: Kullanım süresi dolan tüm ürünler geri döndürme için Zebra'ya iade edilmelidir. Ürünlerin iade edilceği hakkında bilgi için lütfen şu adresi ziyaret edin: <http://www.zebra.com/weee>.

**Hrvatski:** Za kupce u Europskoj uniji: Svi se proizvodi po isteku vijeka trajanja moraju vratiti tvrtki Zebra na recikliranje. Informacije o načinu vraćanja proizvoda potražite na web-stranici: <http://www.zebra.com/weee>.

### TURKISH WEEE Statement of Compliance

EEE Yönetmeliğine Uygundur

### CMM Disclosure

部件名称 (Parts)	有害物质 (25)					
	铅 (Pb)	汞 (Hg)	镉 (Cd)	六价铬 (Cr(VI))	多溴联苯 (PBB)	多溴二苯醚 (PBDE)
金属零件 (Metal Parts)	X	O	O	O	O	O
电路板 (Circuit Modules)	X	O	O	O	O	O
电缆及电缆组件 (Cables and Cable Assemblies)	O	O	O	O	O	O
塑料和聚合物零件 (Plastic and Polymeric Parts)	O	O	O	O	O	O
光学和光学组件 (Optics and Optical Components)	X	O	O	O	O	O
电池 (Batteries)	O	O	O	O	O	O

本表格係根據SJ/T 11364 的規定編制。  
X: 表示這有害物质在這材料中有其含量均在 SJ/T 11364-2014 規定的限量要求以下。  
O: 表示這有害物质在這些材料中的含量超出 SJ/T 11364-2014 規定的限量要求。(企業可在此處, 根據實際情況對上表中打 "X" 的技術圖樣進行進一步說明。)

This table was created to comply with China RoHS requirements.



Zebra Technologies Corporation  
Lincolnshire, IL U.S.A.  
<http://www.zebra.com>

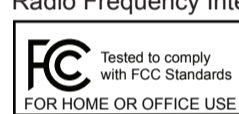
© 2017 ZIH Corp and/or its affiliates. All rights reserved. ZEBRA and the stylized Zebra head are trademarks of ZIH Corp, registered in many jurisdictions worldwide. All other trademarks are the property of their respective owners.



MN-002916-01 Revision A April 2017



### Radio Frequency Interference Requirements - FCC



Note: This equipment has been tested and found to comply with the limits for a Class B digital device, pursuant to Part 15 of the FCC rules. These limits are designed to provide reasonable protection against harmful interference in a residential installation. This equipment generates, uses and can radiate radio frequency energy and, if not installed and used in accordance with the instructions, may cause harmful interference to radio communications. However there is no guarantee that interference will not occur in a particular installation. If this equipment does cause harmful interference to radio or television reception, which can be determined by turning the equipment off and on, the user is encouraged to try to correct the interference by one or more of the following measures:

- Reorient or relocate the receiving antenna
- Increase the separation between the equipment and receiver
- Connect the equipment into an outlet on a circuit different from that to which the receiver is connected
- Consult the dealer or an experienced radio/TV technician for help.

Radio Transmitters (Part 15)  
This device complies with Part 15 of the FCC Rules. Operation is subject to the following two conditions: (1) this device may not cause harmful interference, and (2) this device must accept any interference received, including interference that may cause undesired operation.

### Radio Frequency Interference Requirements - Canada

CAN ICES-3 (B)/NMB-3(B)  
Radio Transmitters

This device complies with Industry Canada's licence-exempt RSSs. Operation is subject to the following two conditions: (1) This device may not cause interference, and (2) This device must accept any interference, including interference that may cause undesired operation of the device.

Le présent appareil est conforme aux CNR d'Industrie Canada applicables aux appareils radio exempts de licence. L'exploitation est autorisée aux deux conditions suivantes: (1) l'appareil ne doit pas produire de brouillage, et (2) l'utilisateur de l'appareil doit accepter tout brouillage radio électrique subi même si le brouillage est susceptible d'en compromettre le fonctionnement.

### CE Marking and European Economic Area (EEA)

Bluetooth® Wireless Technology for use through the EEA has the following restrictions:  
• Maximum radiated transmit power of 100mW EIRP in the frequency range 2.400-2.4835 GHz.  
• Statement of Compliance  
Zebra hereby declares that this radio equipment is in compliance with Directive 2011/65/EU and 1999/5/EC or 2014/53/EU (2014/53/EU superseded by 1999/5/EC from 13th June 2017). The full text of the EU Declaration of Conformity is available at the following internet address: <http://www.zebra.com/doc>.

### Japan (VCCI) - Voluntary Control Council for Interference Class B ITE

この装置は、クラスB情報技術装置です。この装置は、家庭環境で使用することを目的としています。この装置がラジオやテレビジョン受信機に近接して使用されると、受信障害を引き起こすことがあります。取扱説明書に従って正しい取り扱いをして下さい。 VCCI-B

### Other Countries

#### Brazil (UNWANTED EMISSIONS - ALL PRODUCTS)

Regulatory declarations for DS2278 - BRAZIL  
For more information consult the website [www.anatel.gov.br](http://www.anatel.gov.br)  
NOTA: A marca de certificação se aplica ao Equip. de Radiação Restrita, modelo DS2278. Este equipamento opera em caráter secundário, isto é, não tem direito a proteção contra interferência prejudicial, mesmo de estações do mesmo tipo, e não pode causar interferência a sistemas operando em caráter primário. Para maiores consultas sobre ANATEL consulte o site: [www.anatel.gov.br](http://www.anatel.gov.br).

#### Chile

Este equipo cumple con la Resolución N 403 de 2008, de la Subsecretaría de telecomunicaciones, relativa a radiaciones electromagnéticas.

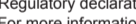
#### China

请访问以下网址可下载当地语言支持的产品说明书  
[www.zebra.com/support](http://www.zebra.com/support)

#### 警告池安全警告:

警告: 请勿拆裝、短路、撞击、挤压或投入火中及水中;  
注意: 如果電池被不正確号替換, 或出現鼓脹, 會存在爆炸及其他危險  
請按說明書使用裝过的電池  
電池充水后禁止使用

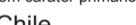
#### 合格證:



### Eurasian Customs Union

Евразийский Таможенный Союз  
Данный продукт соответствует требованиям знака ЕАС.

### EAC



### Mexico

Restrict Frequency Range to: 2.450 - 2.4835 GHz.  
La operación de este equipo está sujeta a las siguientes dos condiciones: (1) es posible que este equipo o dispositivo no cause interferencia perjudicial y (2) este equipo o dispositivo debe aceptar cualquier interferencia, incluyendo la que pueda causar su operación no deseada.

### S. Korea

For a radio equipment using 2400-2483.5MHz or 5725-5825MHz, the following expression should be displayed:  
당해 무선설비는 운용 중 전파혼신 가능성이 있음  
당해 무선설비는 전파 혼신 가능성이 있으므로 인명 안전과 관련된 서비스는 할 수 없습니다.

### Taiwan

臺灣  
低功率電波輻射性電機管理辦法  
第十二條  
經型式認證合格之低功率射頻電機, 非經許可, 公司、商號或使用者均不得擅自變更頻率, 加大功率或變更原設計之特性及功能。  
第十四條  
低功率射頻電機之使用不得影響飛航安全及干擾合法通信; 經發現有干擾現象時, 應立即停用, 並改善至無干擾時方得繼續使用。  
前項合法通信, 指依電信規定作業之無線電通信。  
低功率射頻電機須忍受合法通信或工業、科學及醫療用電波輻射性電機設備之干擾。

### Ukraine

Дане обладнання відповідає вимогам технічного регламенту №1057, № 2008 на обмеження щодо використання деяких небезпечних речовин в електричних та електронних пристроях.

### Thailand

เครื่องโทรคมนาคมและอุปกรณ์นี้ มีมาตรฐานสอดคล้องตามข้อกำหนดของ กททศ.