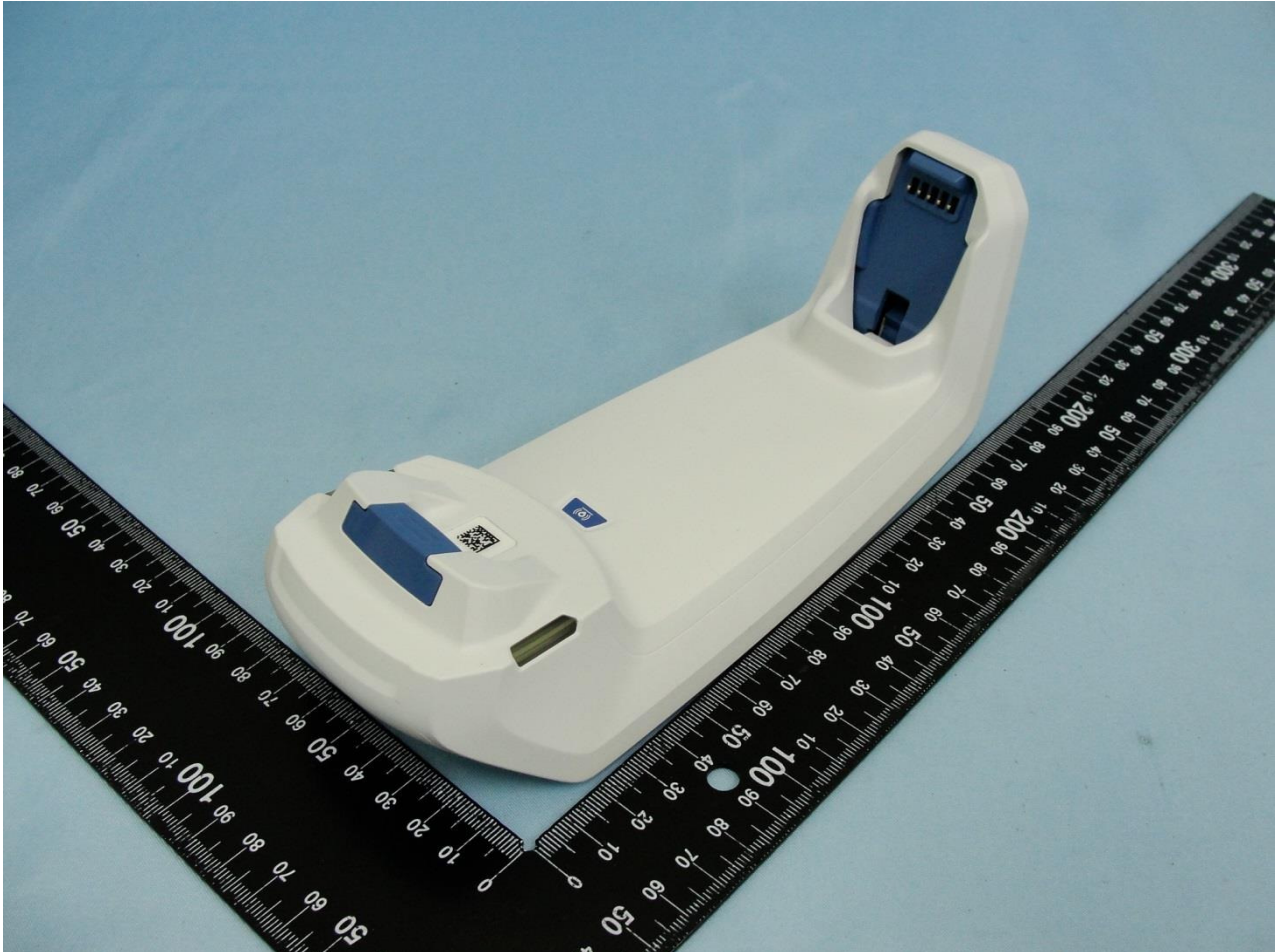


1. External Photograph of EUT

Brand Name: Zebra / Model Name: CR8178-SC



Brand Name: Zebra / Model Name: CR8178-SC





2. Photograph of Accessory

Brand Name: Zebra / Model Name: CR8178-SC

Specification of Accessory		
12V Adapter (Sanhua)	Brand Name	Zebra
	Part Number	PWR-BGA12V50W0WW
12V Adapter (Phihong)	Brand Name	Zebra
	Part Number	PWRBGAV50W0WW
5V Adapter	Brand Name	Zebra
	Part Number	PWR-WUA5V4W0US
USB 5V Adapter	Brand Name	Zebra
	Part Number	PWR-WUA5V6W0WW
RJ-50-RS232 Cable 1	Brand Name	Zebra
	Part Number	CBA-R21-S15PAR
RJ-50-RS232 Cable 2	Brand Name	Zebra
	Part Number	CBA-R01-S07PAR
RJ-50 to USB Cable 1	Brand Name	Zebra
	Part Number	CBA-U21-S07ZBR
RJ-50 to USB Cable 2	Brand Name	Zebra
	Part Number	CBA-U47-S15ZAR

Remark: For accessories equipped with this EUT, please refer to the following photos.

Brand Name: Zebra / Model Name: CR8178-SC



Brand Name: Zebra / Model Name: CR8178-SC

12V Adapter (Sanhua)



Brand Name: Zebra / Model Name: CR8178-SC

12V Adapter (Phihong)



Brand Name: Zebra / Model Name: CR8178-SC

5V Adapter



Brand Name: Zebra / Model Name: CR8178-SC

USB 5V Adapter





Brand Name: Zebra / Model Name: CR8178-SC

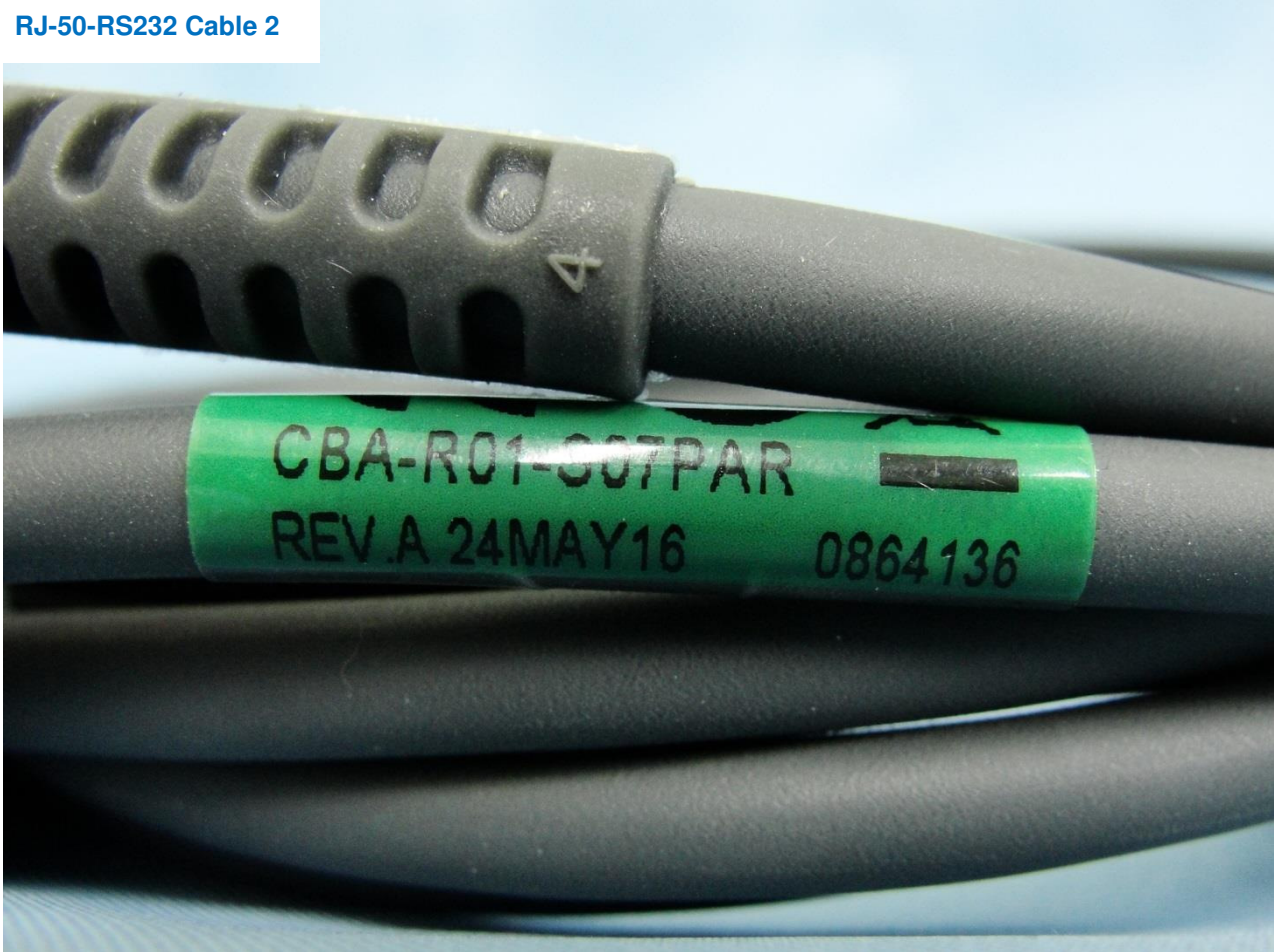
RJ-50-RS232 Cable 1





Brand Name: Zebra / Model Name: CR8178-SC

RJ-50-RS232 Cable 2



Brand Name: Zebra / Model Name: CR8178-SC

RJ-50 to USB Cable 1





Brand Name: Zebra / Model Name: CR8178-SC

RJ-50 to USB Cable 2

