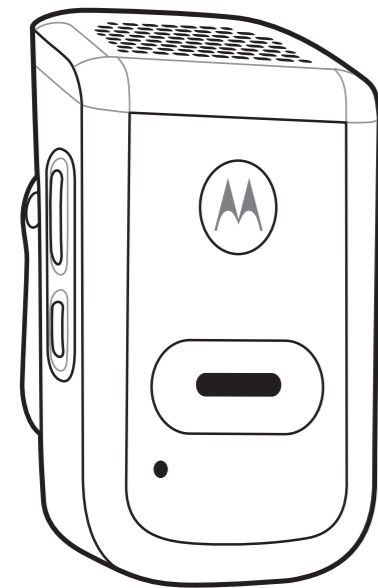
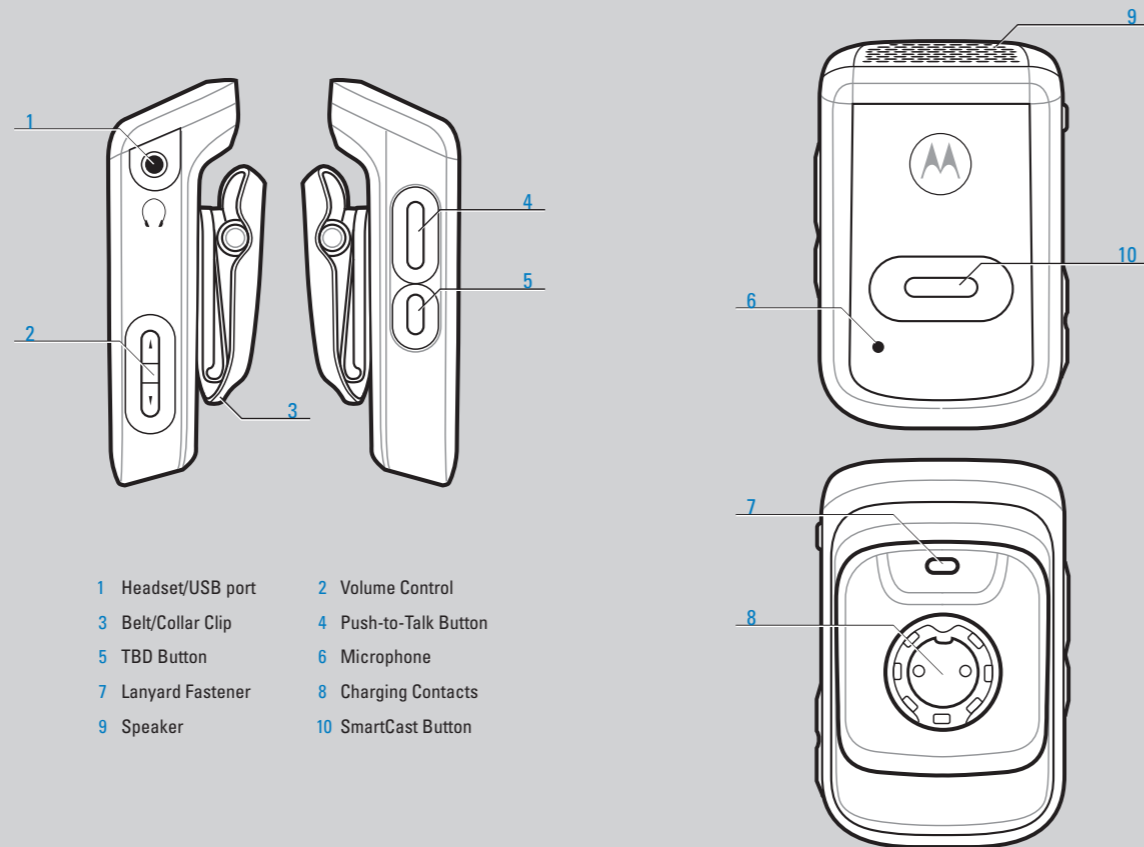


CA10
Quick Start Guide

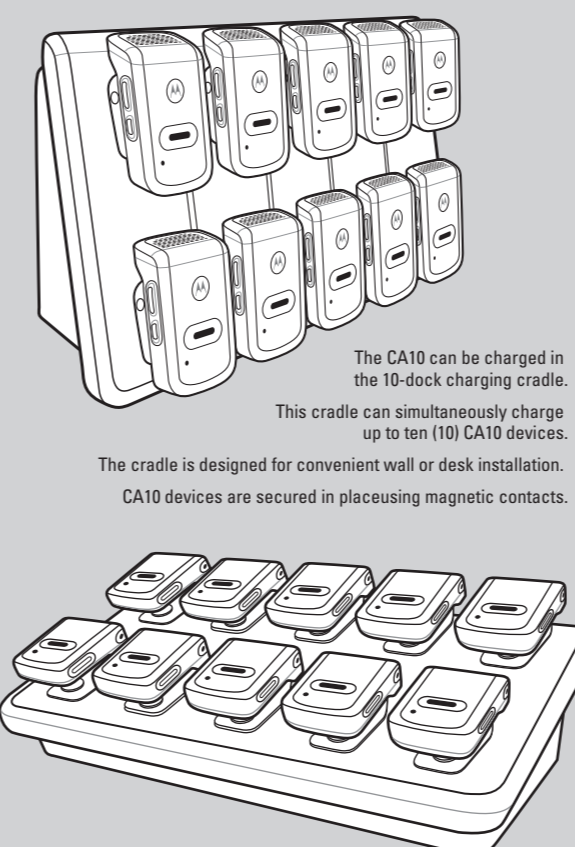


FEATURES



- 1 Headset/USB port
- 2 Volume Control
- 3 Belt/Collar Clip
- 4 Push-to-Talk Button
- 5 TBD Button
- 6 Microphone
- 7 Lanyard Fastener
- 8 Charging Contacts
- 9 Speaker
- 10 SmartCast Button

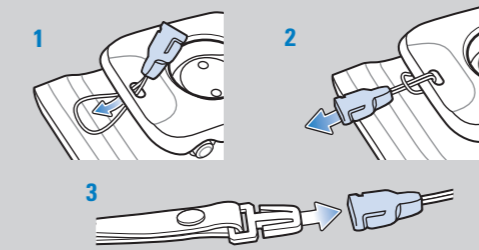
CHARGING



The CA10 can be charged in the 10-dock charging cradle. This cradle can simultaneously charge up to ten (10) CA10 devices. The cradle is designed for convenient wall or desk installation. CA10 devices are secured in place using magnetic contacts.

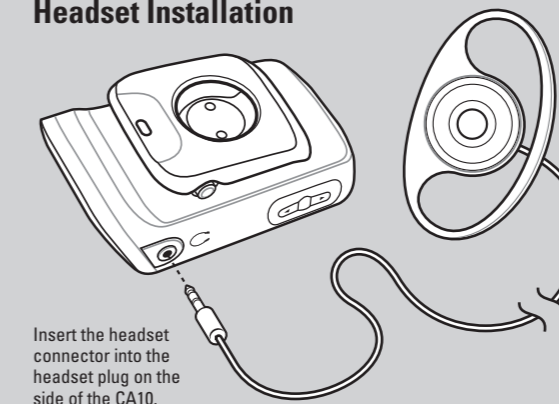
ACCESSORIES

Lanyard Installation



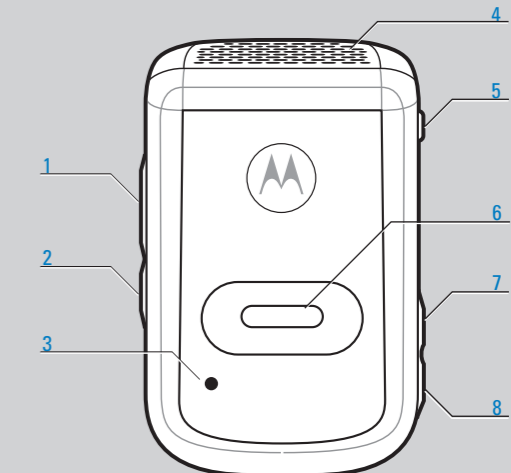
1. Slip the lanyard safety loop through the fastener on the CA10 clip.
2. Pull the lanyard safety clasp through the loop and pull to secure the lanyard to the clip.
3. Attached the lanyard extension to the safety clasp.

Headset Installation



Insert the headset connector into the headset plug on the side of the CA10.

BUTTON FUNCTIONS



Button Functions (default)

- 1 Push-to-Talk
- 2 TBD
- 3 Microphone
- 4 Speaker
- 5 Headset Jack
- 6 SmartCast (Private Call)
- 7 Volume Up
- 8 Volume Down

PANTONE 285

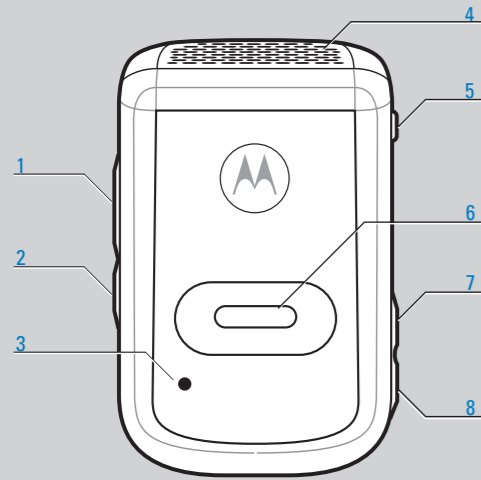
BLACK

WEARABLE OPTION

Lanyard

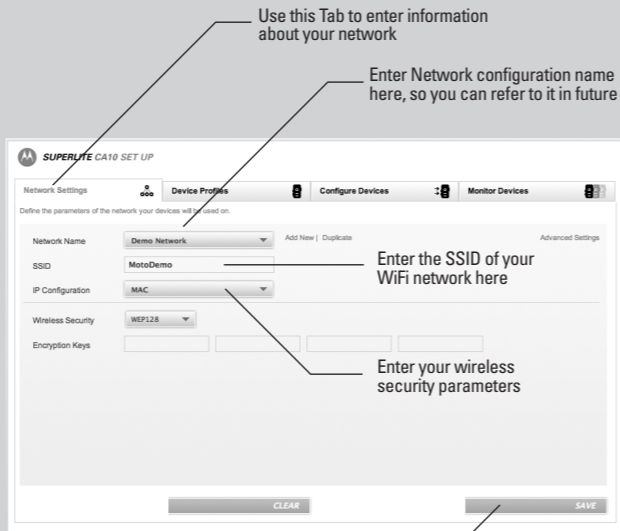


Clip to Shirt



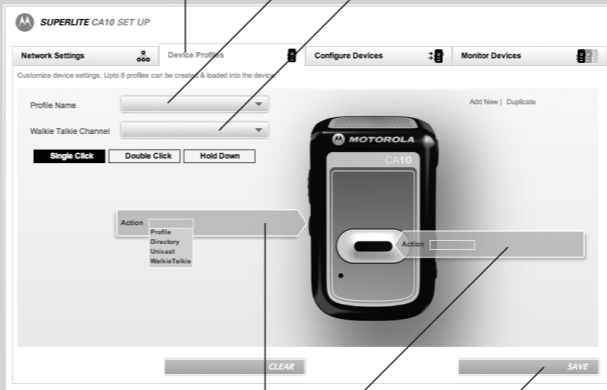
DEPLOYMENT APPLICATION SETUP

1. Unzip the deployment application zip file anywhere on your Windows PC or a Mac
2. Make sure that your computer is on the deployment network ie a temporary WiFi network with SSID=parrot2008 and Security Settings=Open
3. Make sure your computer has a static IP set to 192.168.0.201
4. Go to the directory where you unzipped the deployment application and run Launcher.bat (Launcher.sh for Mac)
5. Double click on SuperLite UI shortcut to open "http://localhost:9090/DA/DA" in your browser (Safari or IE6 or higher)
6. Next few pages go thru the UI that opens up in the browser

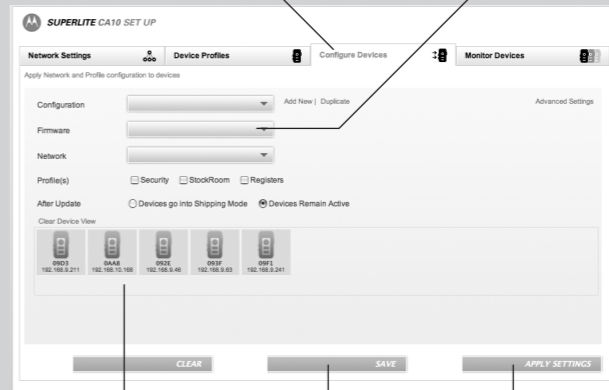


Press Save to save all settings that you entered above

Use this tab to set walkie talkie channel and assign button functions. You can skip this tab and just use factory defaults



Use this Tab to apply Network and Profile Settings to your devices



Use this Tab to monitor devices that are on your network. The data on this page is automatically refreshed as new updates are sent by devices

Name	IP Address	Profile	Time	Firmware	Hardware	Access Point	Serial No	Signal	Battery	Ch Status
DEU	192.168.0.211	0	3/28/2015	1.5.0.0	A1080DV11.0	0110a4a40	0100000	128	100% 100	11
BAAB	192.168.0.168	0	3/28/2015	1.5.0.0	A1080DV11.0	0110a4a40	0100000	141	100% 100	11
DEZ	192.168.0.169	0	3/28/2015	1.5.0.0	A1080DV11.0	0110a4a40	0100000	0	100% 100	11
DEP	192.168.0.241	0	3/28/2015	1.5.0.0	A1080DV11.0	0110a4a40	0100000	125	100% 100	11
DEP1	192.168.0.241	0	3/28/2015	1.5.0.0	A1080DV11.0	0110a4a40	0100000	126	100% 100	11

1. Regulatory Information

This device is approved under the Symbol Technologies brand: Symbol Technologies, Inc., is the Enterprise Mobility business of Motorola, Inc. ("Motorola").

This guide applies to the following Model Numbers: CA1060.

All Motorola/Symbol devices are designed to be compliant with rules and regulations in locations they are sold and will be labeled as required.

Any changes or modifications to Motorola/Symbol Technologies equipment, not expressly approved by Motorola/Symbol Technologies, could void the user's authority to operate the equipment.

CAUTION:

Only use Motorola/Symbol approved and UL Listed accessories, battery packs and battery chargers.

Do NOT attempt to charge damp/wet mobile computers or batteries. All components must be dry before connecting to an external power source.

2. Wireless Device Country Approvals

Country Roaming

This device incorporates the International Roaming feature (IEEE802.11d) which will ensure the product operates on the correct channels for the particular country of use.

Ad-Hoc Operation

Ad-Hoc operation is limited to Channels 36-48 (5150-5250 MHz). Use of this band is restricted to Indoor Use Only, any other use will make the operation of this device illegal.

Frequency of Operation – FCC and IC

The use in the UNII (Unlicensed National Information Infrastructure) band 1 5150-5250 MHz band is restricted to Indoor Use Only; any other use will make the operation of this device illegal.

The available channels for 802.11 b/g operation in the US are Channels 1 to 11. The range of channels is limited by firmware.

3. Health and Safety Recommendations



Ergonomic Recommendations

Caution: In order to avoid or minimize the potential risk of ergonomic injury follow the recommendations below. Consult with your local Health & Safety Manager to ensure that you are adhering to your company's safety programs to prevent employee injury.

- Reduce or eliminate repetitive motion
- Maintain a natural position
- Reduce or eliminate excessive force

- Keep objects that are used frequently within easy reach
- Perform tasks at correct heights
- Reduce or eliminate vibration
- Reduce or eliminate direct pressure
- Provide adjustable workstations
- Provide adequate clearance
- Provide a suitable working environment
- Improve work procedures.

Note: The following section is only applicable for mobile computers.



Warnings for Use of Wireless Devices



Safety in Hospitals

Wireless devices transmit radio frequency energy and may affect medical electrical equipment.

Wireless devices should be switched off wherever you are requested to do so in hospitals, clinics or healthcare facilities. These requests are designed to prevent possible interference with sensitive medical equipment.

Pacemakers

Pacemaker manufacturers recommended that a minimum of 15cm (6 inches) be maintained between a handheld wireless device and a pacemaker to avoid potential interference with the pacemaker. These recommendations are consistent with independent research and recommendations by Wireless Technology Research.

Persons with Pacemakers:

- Should ALWAYS keep the device more than 15cm (6 inches) from their pacemaker when turned ON.
- Should not carry the device in a breast pocket.
- Should use the ear furthest from the pacemaker to minimise the potential for interference.
- If you have any reason to suspect that interference is taking place, turn OFF your device.

Other Medical Devices

Please consult your physician or the manufacturer of the medical device, to determine if the operation of your wireless product may interfere with the medical device.



RF Exposure Guidelines

Safety Information

Reducing RF Exposure – Use Properly

Only operate the device in accordance with the instructions supplied.

Body-Worn Devices

This device was tested for typical body-worn operation. Use only Motorola/Symbol tested and approved belt-clips, holsters, and similar accessories to ensure FCC Compliance. The use of third-party belt-clips, holsters, and similar accessories may not comply with FCC RF exposure compliance requirements, and should be avoided. The FCC has granted an Equipment Authorization for these model phones with all reported SAR levels evaluated as in compliance with the FCC RF emission guidelines. SAR information on these model phones is on file with the FCC and can be found under the Display Grant section of <http://www.fcc.gov/oet/fccid>.

4. Batteries

There are limitations to how long a battery can operate or be stored before needing replacement. Many factors affect the actual life cycle of a battery pack, such as heat, cold, harsh environmental conditions and severe drops.

Battery Safety Guidelines

- Follow battery usage, storage, and charging guidelines found in the user's guide.
- Improper battery use may result in a fire, explosion, or other hazard.
- Do not disassemble or open, crush, bend or deform, puncture, or shred.
- Severe impact from dropping any battery-operated device on a hard surface could cause the battery to overheat.
- Do not short circuit a battery or allow metallic or conductive objects to contact the battery terminals.
- Do not modify or remanufacture, attempt to insert foreign objects into the battery, immerse or expose to water or other liquids, or expose to fire, explosion, or other hazard.
- Do not leave or store the equipment in or near areas that might get very hot, such as in a parked vehicle or near a radiator or other heat source. Do not place battery into a microwave oven or dryer.
- Battery usage by children should be supervised.
- Please follow local regulations to promptly dispose of used re-chargeable batteries.
- Do not dispose of batteries in fire.
- Seek medical advice immediately if a battery has been swallowed.
- In the event of a battery leak, do not allow the liquid to come in contact with the skin or eyes. If contact has been made, wash the affected area with large amounts of water and seek medical advice.
- If you suspect damage to your equipment or battery, contact Motorola Enterprise Mobility support to arrange for inspection.

5. Use with Hearing Aids

When some wireless devices are used near some hearing devices (hearing aids and cochlear implants), users may detect a buzzing, humming, or whining noise. Some hearing devices are more immune than others to this interference noise, and wireless devices also vary in the amount of interference they generate. In the event of interference you may want to consult your hearing aid supplier to discuss solutions.

6. Radio Frequency Interference Requirements- FCC



Note: This equipment has been tested and found to comply with the limits for a Class B digital device, pursuant to Part 15 of the FCC rules. These limits are designed to provide reasonable protection against harmful interference in a residential installation. This equipment generates, uses and can radiate radio frequency energy and, if not installed and used in accordance with the instructions, may cause harmful interference to radio communications. However there is no guarantee that interference will not occur in a particular installation. If this equipment does cause harmful interference to radio or television reception, which can be determined by turning the equipment off and on, the user

is encouraged to try to correct the interference by one or more of the following measures:

- Reorient or relocate the receiving antenna
- Increase the separation between the equipment and receiver
- Connect the equipment into an outlet on a circuit different from that to which the receiver is connected
- Consult the dealer or an experienced radio/TV technician for help.

Radio Transmitters (Part 15)

This device complies with Part 15 of the FCC Rules. Operation is subject to the following two conditions: (1) this device may not cause harmful interference, and (2) this device must accept any interference received, including interference that may cause undesired operation.

7. Radio Frequency Interference Requirements- Canada

This Class B digital apparatus complies with Canadian ICES-003.

Cet appareil numérique de la classe B est conforme à la norme NMB-003 du Canada.

Radio Transmitters

This device complies with RSS 210 of Industry & Science Canada. Operation is subject to the following two conditions: (1) this device may not cause harmful interference and (2) this device must accept any interference received, including interference that may cause undesired operation.

Label Marking: The Term "IC:" before the radio certification only signifies that Industry Canada technical specifications were met.