

# SPECIFICATION

**CUSTOMER :** Wistron  
**PART NAME :** Jaws BLE Antenna  
**DEVE NUMBER :** T-0312  
**AUDEN P/N :** B12485-30 、 B12490-30  
**WISTRON P/N:**  
**Ant. type:** PIFA  
**DATE :** 2022/05/23  
**DATASHEET REVISION :** 00  
**MANUFACTURE:** Auden Kunshan

| Auden Techno Corp.                 |  |  |  |
|------------------------------------|--|--|--|
| <b>RF<br/>ENGINEER<br/>CHECKED</b> | <b>MECHANICAL<br/>ENGINEER<br/>CHECKED</b> | <b>R&amp;D<br/>MANAGER<br/>CHECKED</b> | <b>PRODUCT<br/>MANAGER<br/>CHECKED</b> |
| Danny Zheng                        | Tony Cheng                                 | Jacky Tsai                             | Tony Lee                               |



**Auden Techno Corp.**

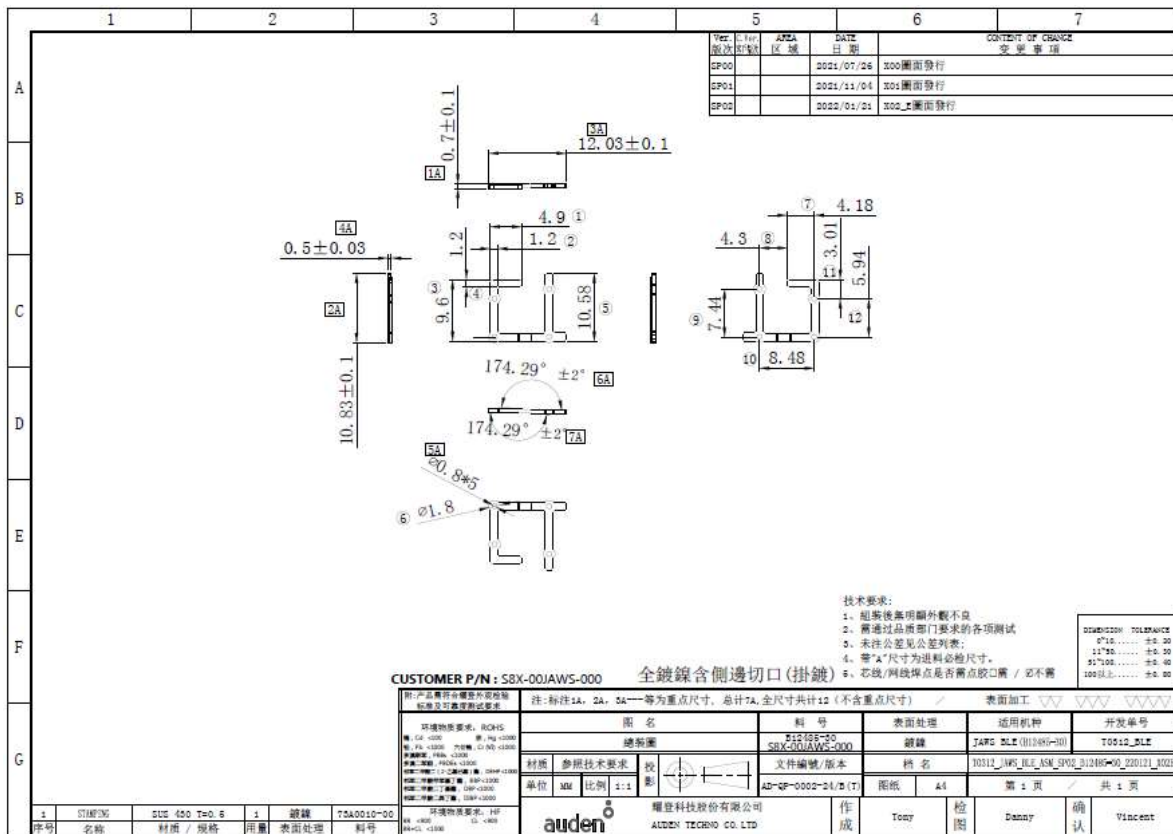
**NO.19,LANE 772 HO-PING ROAD,PA-TE CITY, TAO-YUAN HSIEN,TAIWAN**

**TEL : 886-3-3631901**

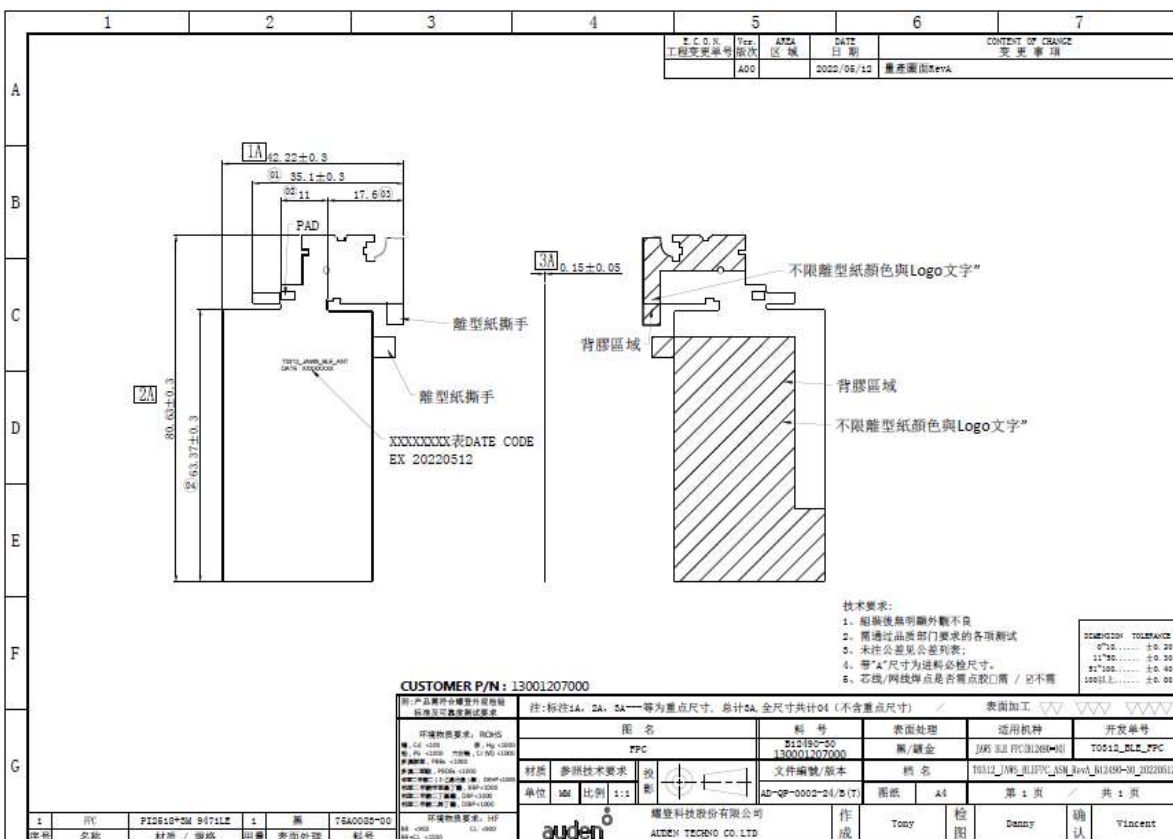
**FAX : 886-3-366061**

## Antenna 2D Drawing

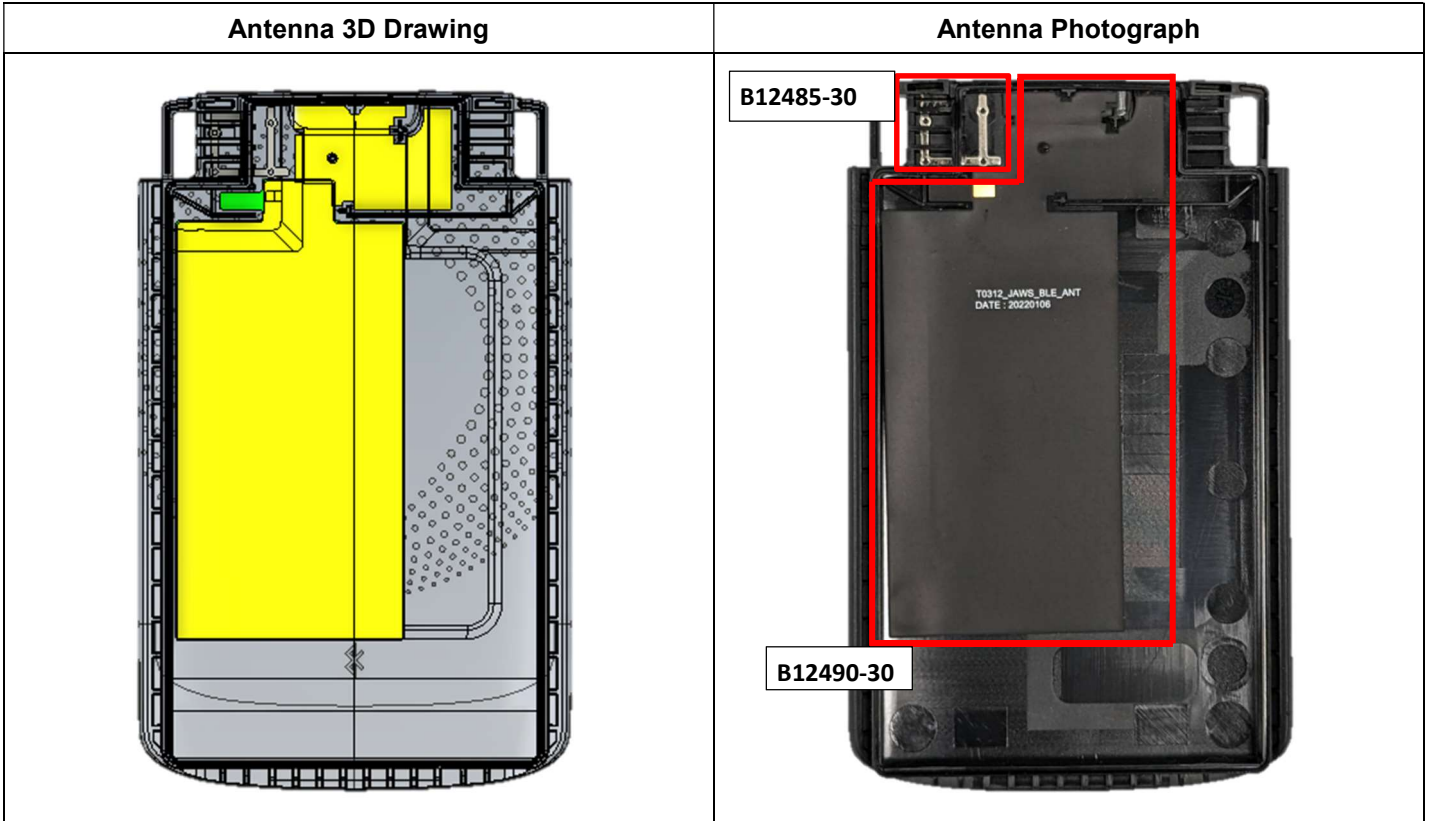
B12485-30:



B12490-30:



Antenna 3D Drawing and Photograph:



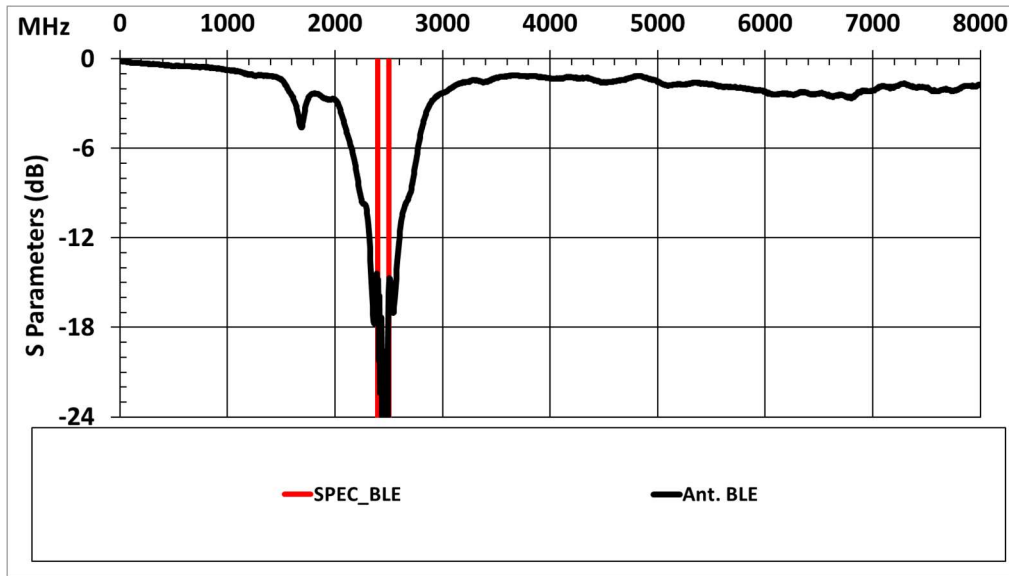
Antenna Performance

1. Ant.BLE(T/RX antenna)

◆ Description

|                        |   |
|------------------------|---|
| <b>Frequency Range</b> | 2402~2483MHz                                |
| <b>Impedance</b>       | 50Ω   |
| <b>Return Loss</b>     | As shown below S11                          |
| <b>Peak Gain</b>       | 3.61dBi @ 2475MHz(test in anechoic chamber) |
| <b>Admitted Power</b>  | N/A   |
| <b>Cable</b>           | N/A   |
| <b>Antenna Type</b>    | PIFA  |
| <b>Connector</b>       | N/A   |
| <b>Process</b>         | Stamping Insert molding                     |

◆ Antenna Return Loss



◆ Antenna Efficiency(test in anechoic chamber)

| Ant. BLE performance |           |           |
|----------------------|-----------|-----------|
| BLE                  | Avg. Gain | Peak Gain |
| 2400                 | -4.69     | 3.05      |
| 2402                 | -4.72     | 2.66      |
| 2425                 | -4.60     | 3.61      |
| 2441                 | -4.65     | 3.44      |
| 2450                 | -4.30     | 3.32      |
| 2475                 | -4.21     | 3.61      |
| 2483                 | -4.32     | 3.56      |
| 2500                 | -4.37     | 2.84      |

◆ Antenna 3D Radiation Pattern

