



November 10, 2009

Regulatory Engineering

Federal Communications Commission
Office of Engineering and Technology
Equipment Authorization Division
7345 Oakland Mills Road
Columbia MD 21046

To: Andy Liemer

Response to FCC Correspondence Number: 38241

Re: FCC ID: UZ7AP7131N
Correspondence Reference Number: 38241
731 Confirmation Number: EA585844

Question 1)

Does this device meet the requirements for DFS indoor use specified in KDB 443999? If this device is restricted to indoor use, upload the necessary exhibits (User's Manual statement,

Response 1)

The following text is excerpted from the Users Guide

Wireless Devices - Countries

Country Selection

Select only the country in which you are using the device. Any other selection will make the operation of this device illegal. The US version of the Access Point will only have US listed in the country selection table. The US version will be sold / used in the US protectorates: American Samoa, Guam, Puerto Rico, US Virgin Islands.

Operation in the US

The use on UNII (Unlicensed National Information Infrastructure) Band 1 5150-5250 MHz and Band 3 5470 - 5725 MHz is restricted to indoor use only, any other use will make the operation of this device illegal.



MOTOROLA

Enterprise Mobility Solutions

Devices using the 5470 - 5725 MHz band shall not be capable of transmitting in the band 5600 - 5650 MHz in the US, this "Notched" band has been disabled in the US version of the Access Point.

The available channels for 802.11 b/g operation in the US are Channels 1 to 11. The range of channels is limited by firmware.

To comply with the 5.60 - 5.65 GHz Notched band, Channels 120, 124, 128, and 132 have been disabled. Here is a screen shot of the Access Point Configuration Area, Channel 120, 124, 128, and 132 are "no longer listed" so that the device can't utilize these channels.

AP-7131N Access Point

Radio2[802.11a/n] Settings Advanced Setting

Properties

Placement Indoor

MAC Address 00:23:68:0B:A2:C0

Radio Type 802.11n (5 GHz)

HT Protection non-HT STA on Channel

Channel, power and Rates Settings

802.11 a/n mode A and N Set Rates

Channel Width 20/40 MHz

Channel Selection User selected

Primary Channel 36

Secondary Channel 104, 108, 112, 116, 136, 140, 149, 153

Power Level 140 dBm 50 mW

Performance

RTS Threshold 2346 Bytes

Set RF QoS Set Aggregation

Beacon Settings

Beacon Interval 100 K-usec

DTIM Interval 10 Beacon Interval(s)

QBSS Load Element Set

Enable QBSS load element

QBSS Beacon Interval 10 Beacon Time

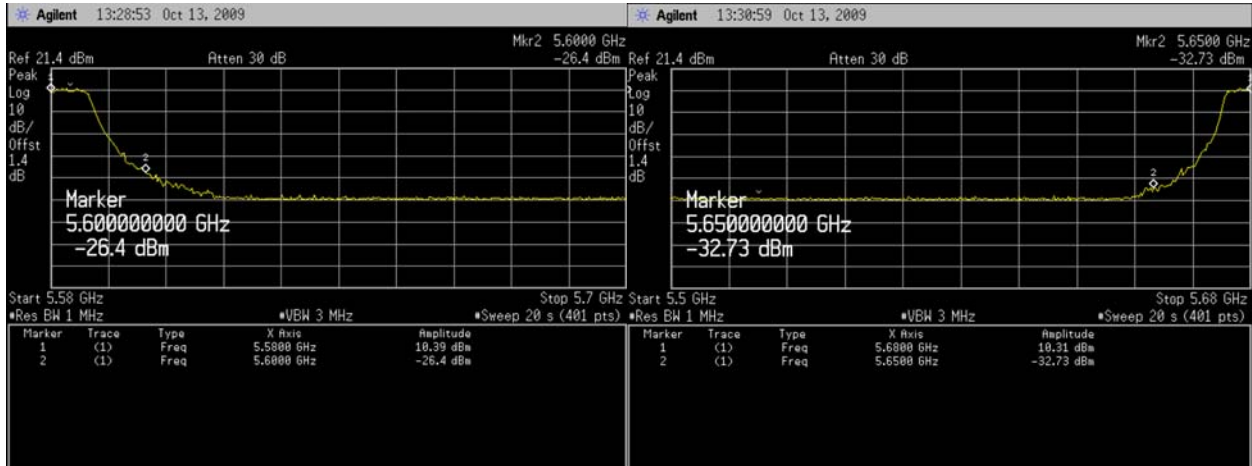
Apply Undo Changes Help Logout

System Name AP-71xx



Question 1.1) 20 dB BW plots at 5600 MHz and 5650 MHz, etc.).

Response 1.1) See Plots below

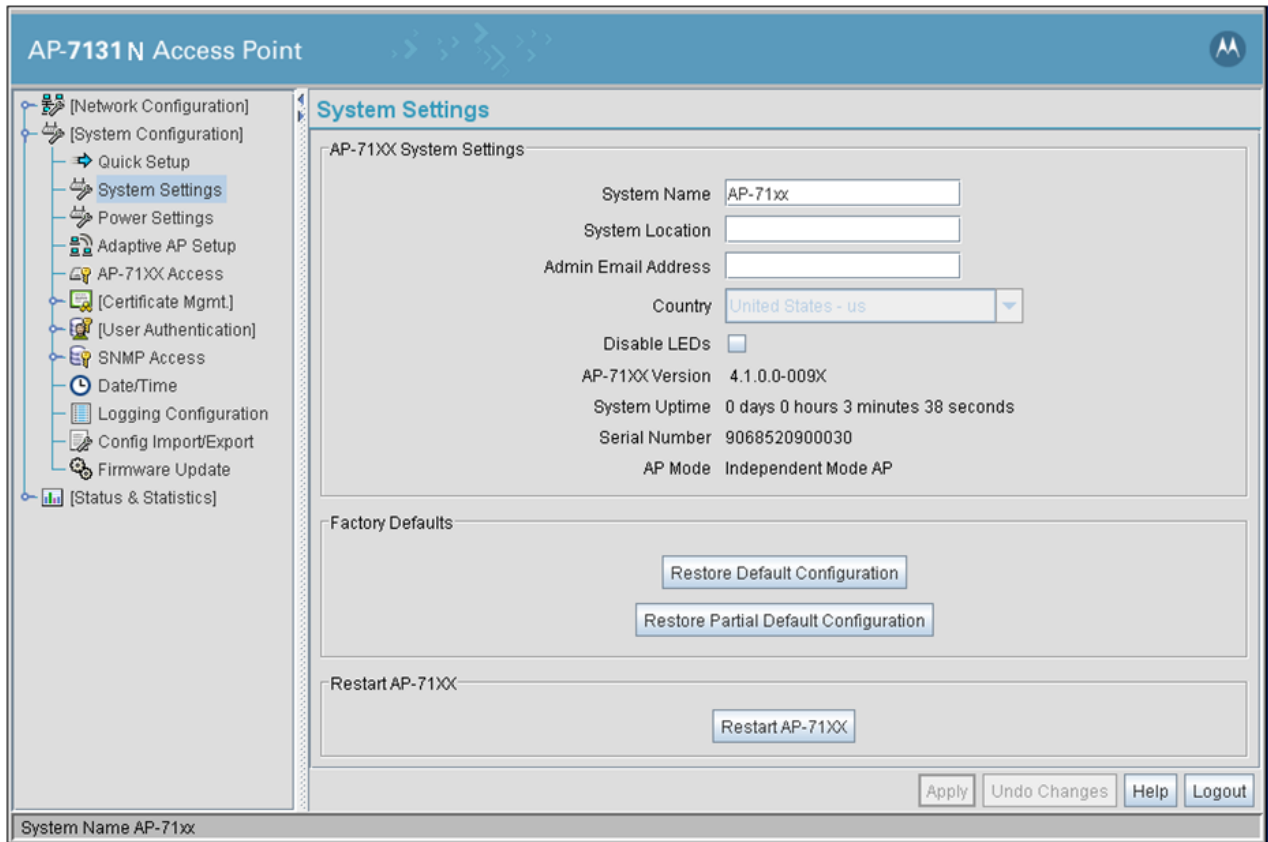




Question 2) Upload an exhibit showing compliance with the country code settings specified in KDB 594280.

Response 2)

See Screen shot - Country is set to US and Grayed out so it can't be changed.



Respectfully,

Mark S. Luksich
DMTS, Regulatory Engineering
631-738-5134
Mark.Luksich@motorola.com