

Appendix B. Test Photos

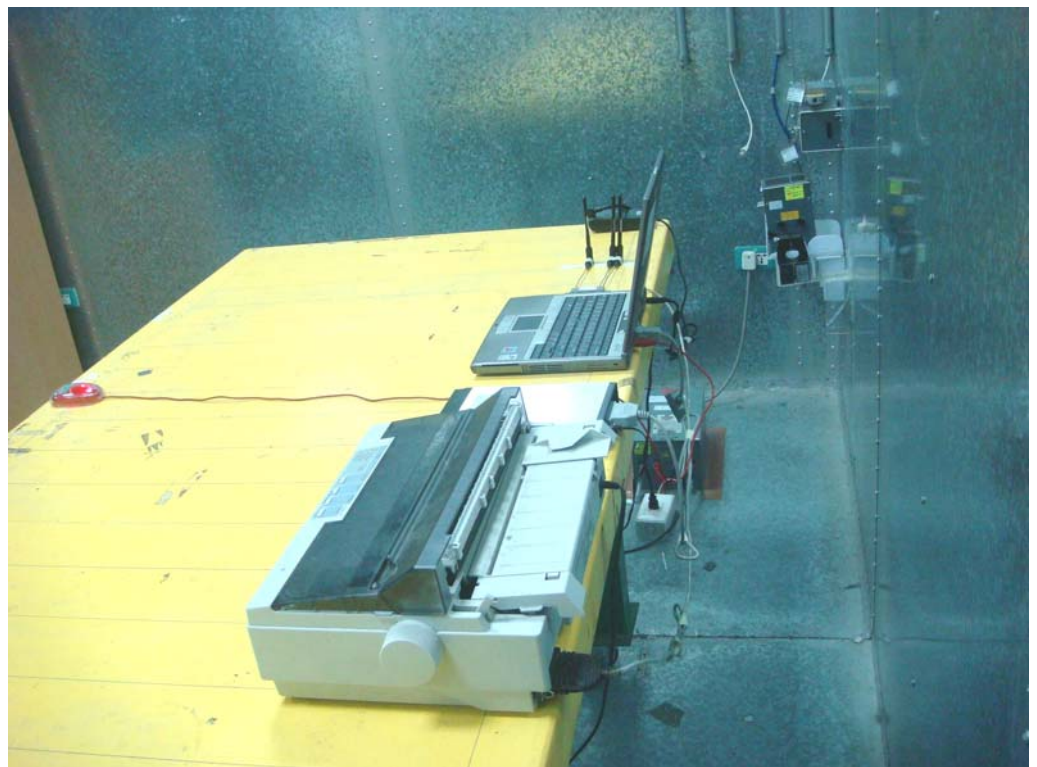
1. Photographs of Conducted Emissions Test Configuration

Antenna 1

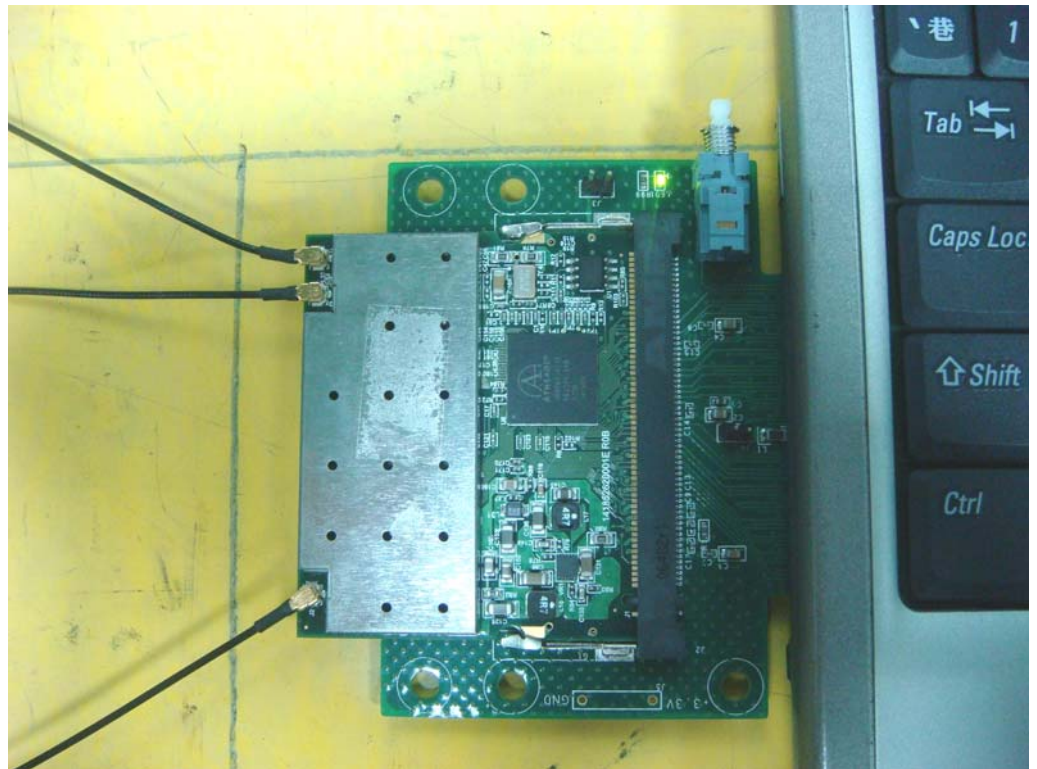
FRONT VIEW



REAR VIEW



SIDE VIEW

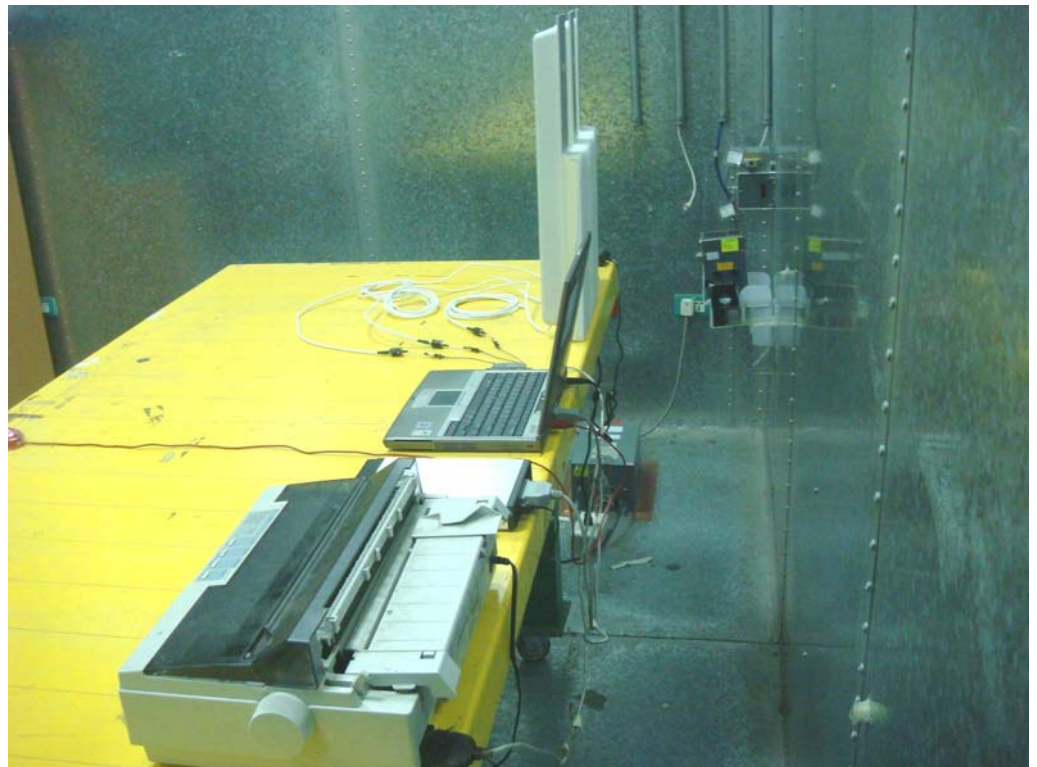


Antenna 2

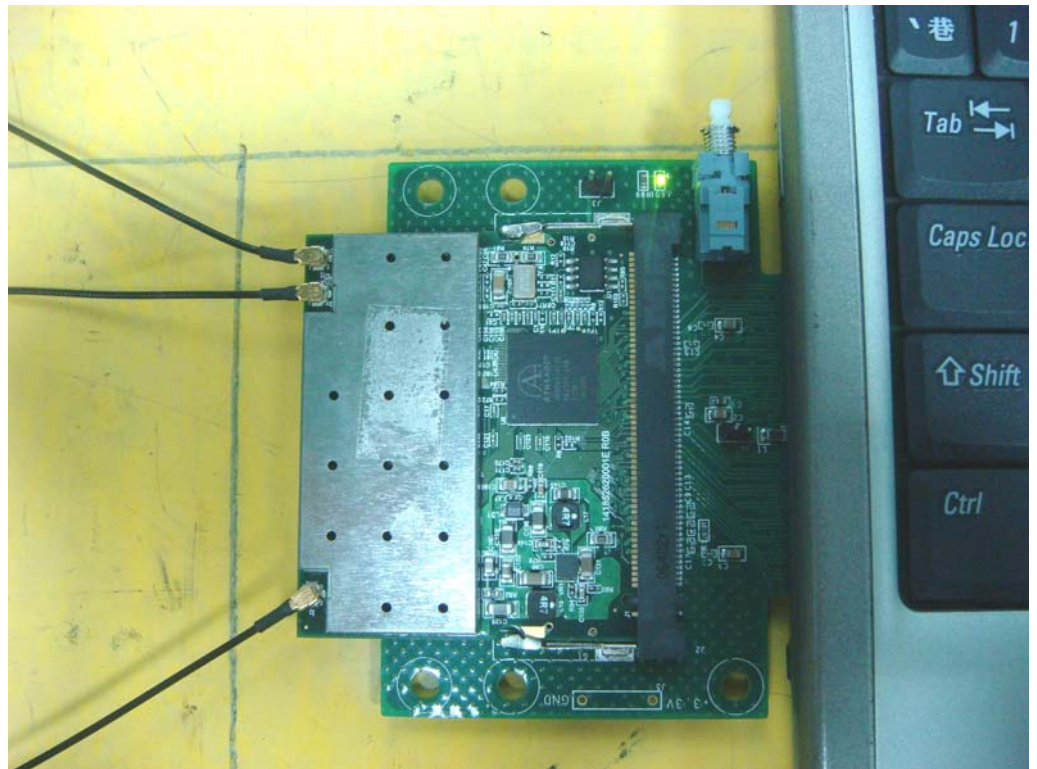
FRONT VIEW



REAR VIEW

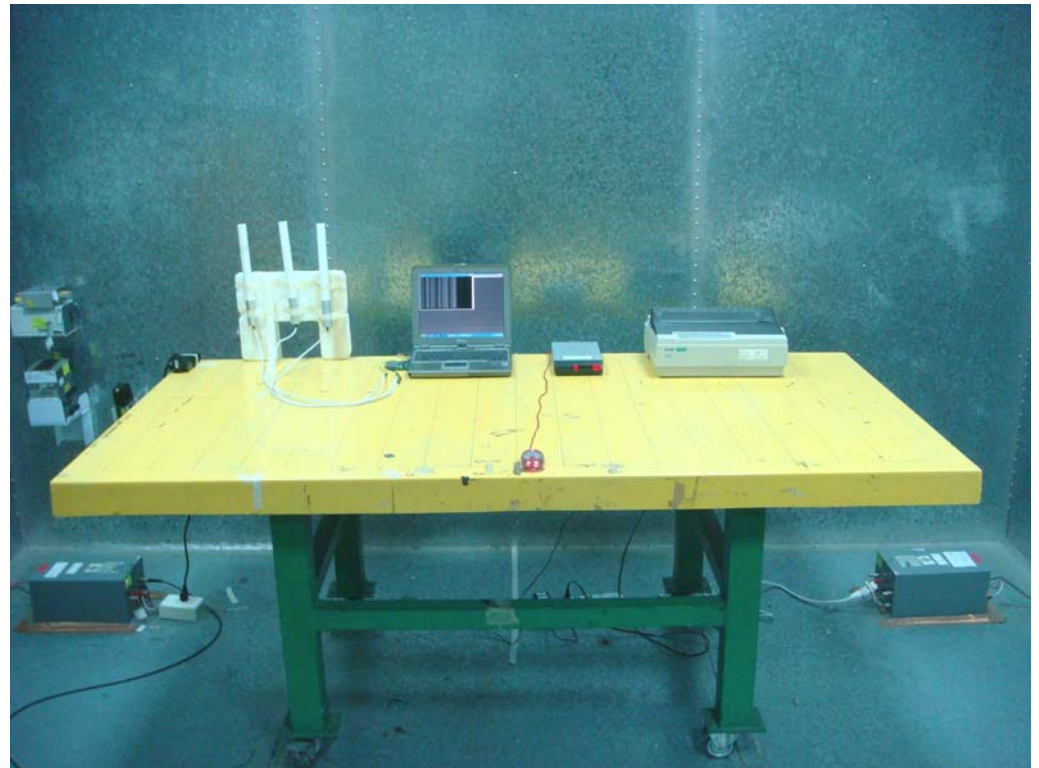


SIDE VIEW

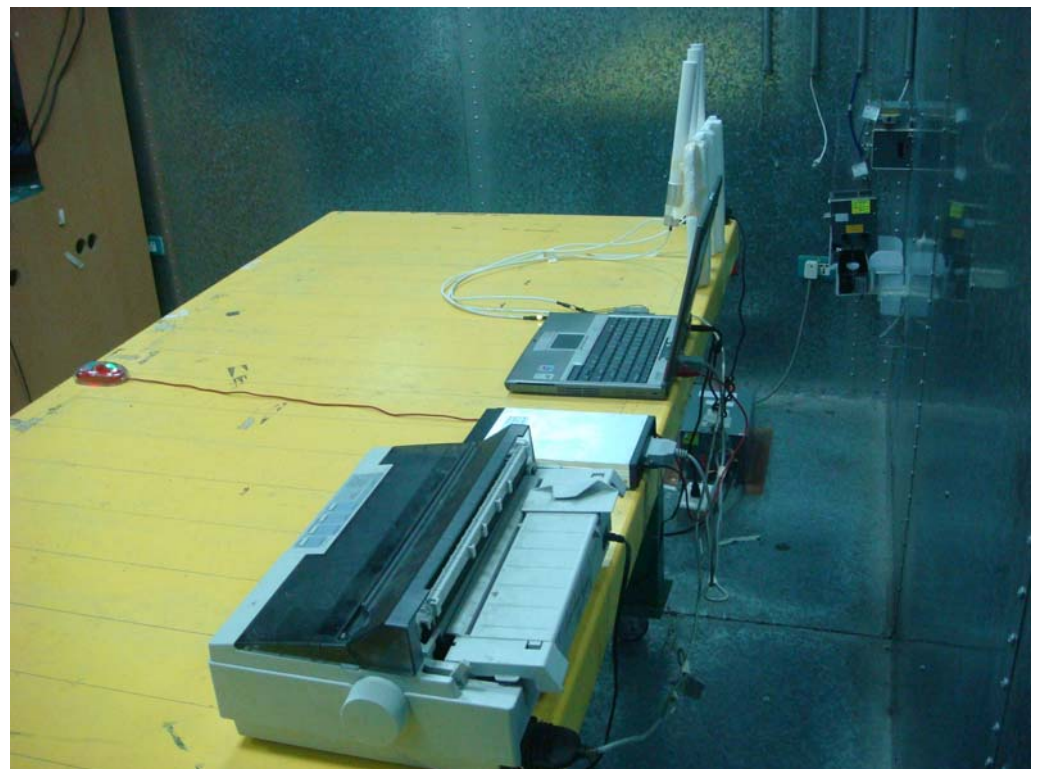


Antenna 3

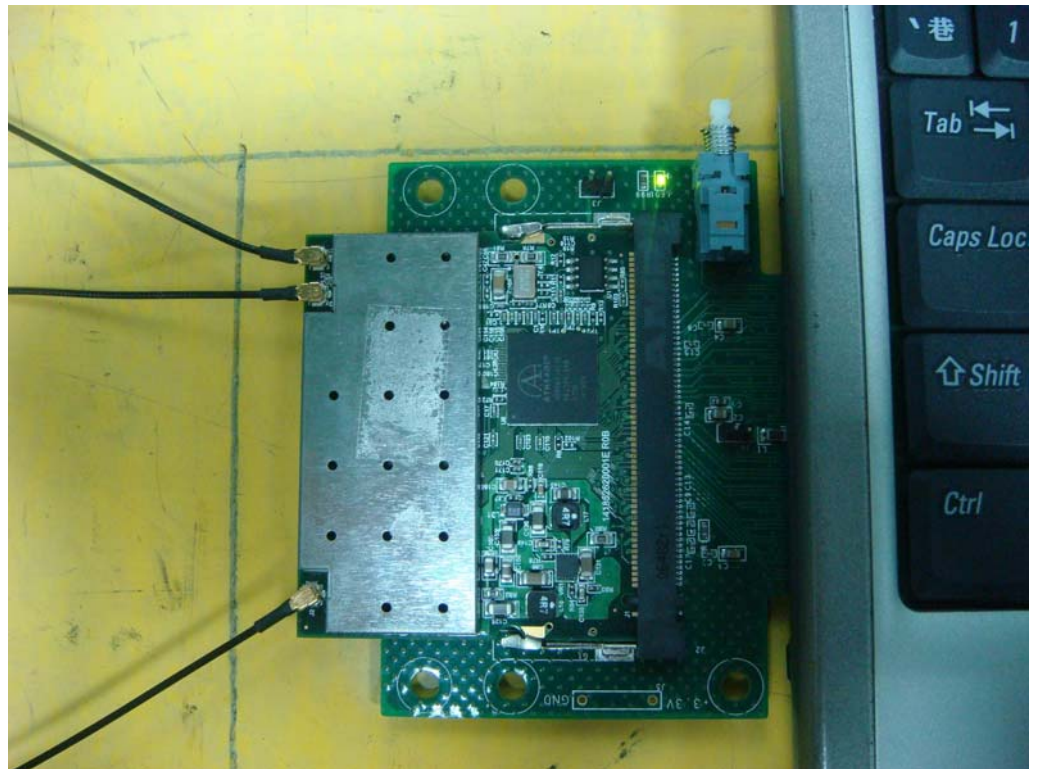
FRONT VIEW



REAR VIEW

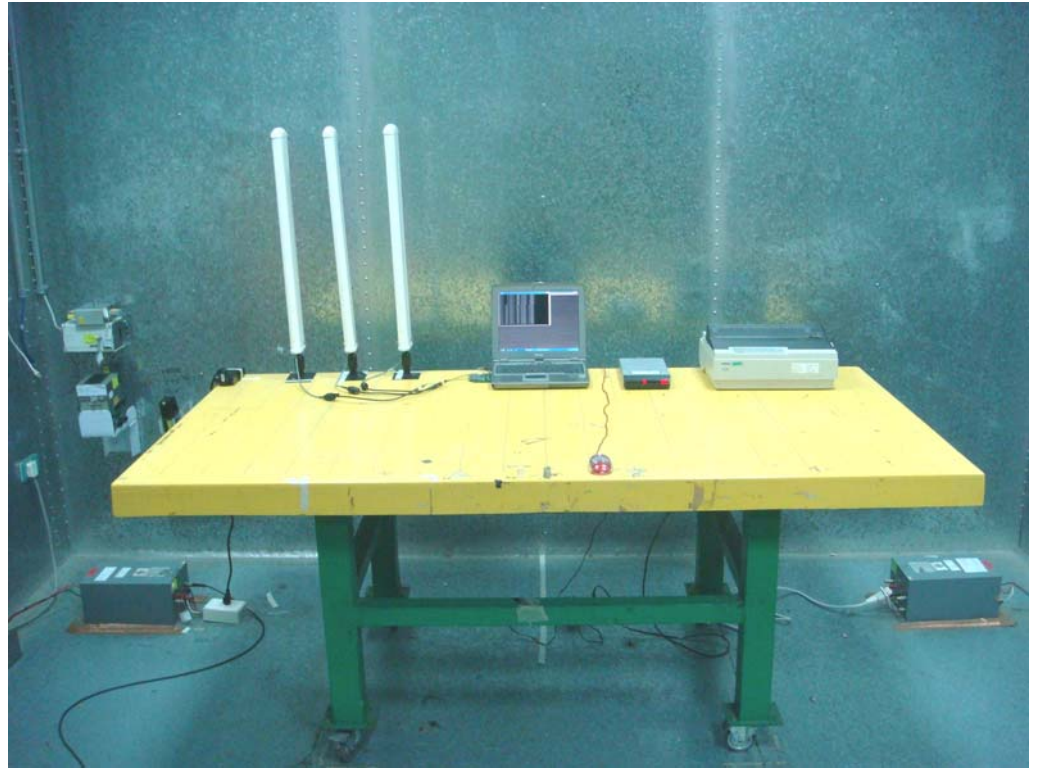


SIDE VIEW

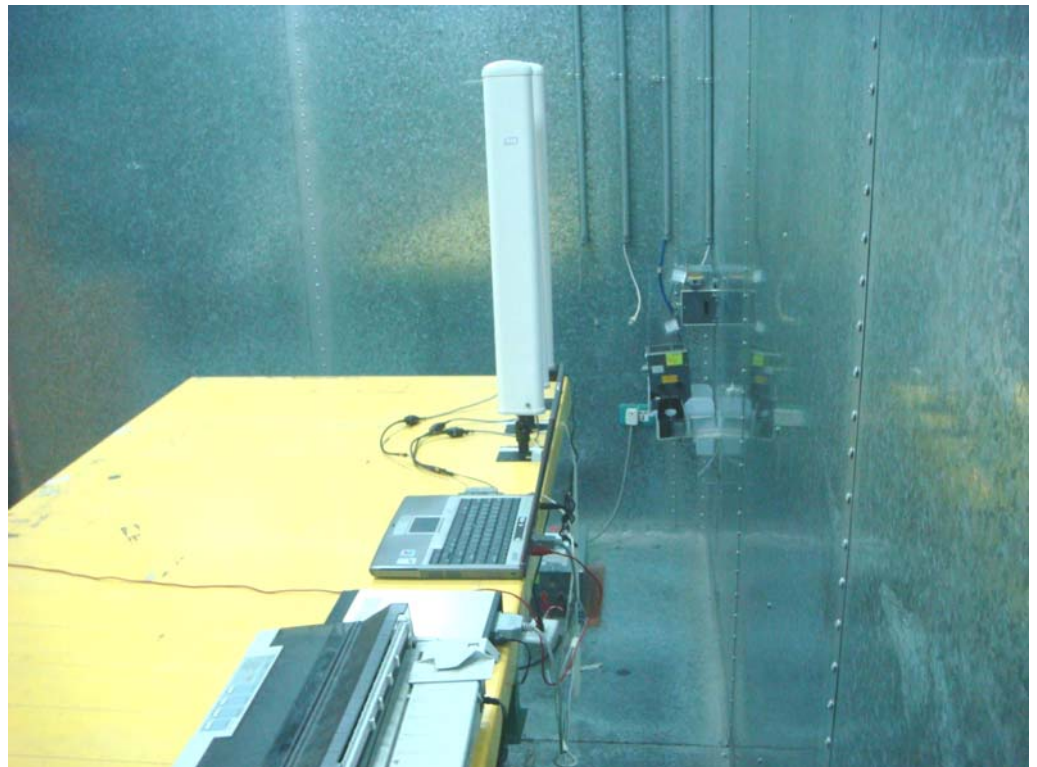


Antenna 4

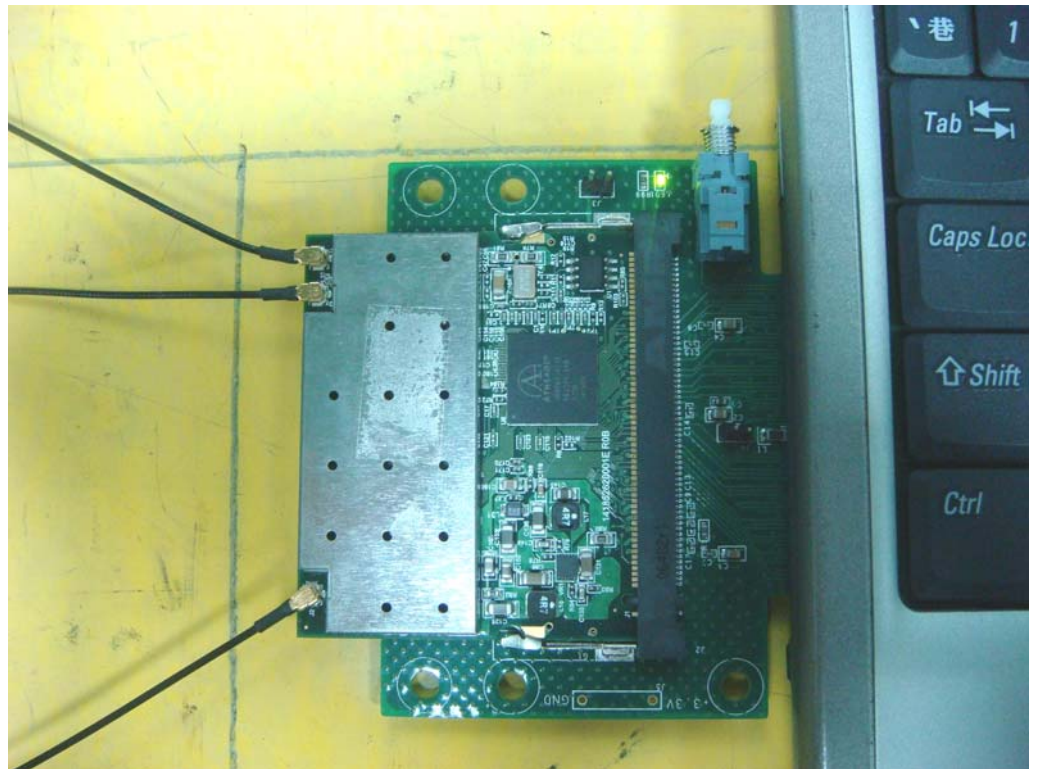
FRONT VIEW



REAR VIEW

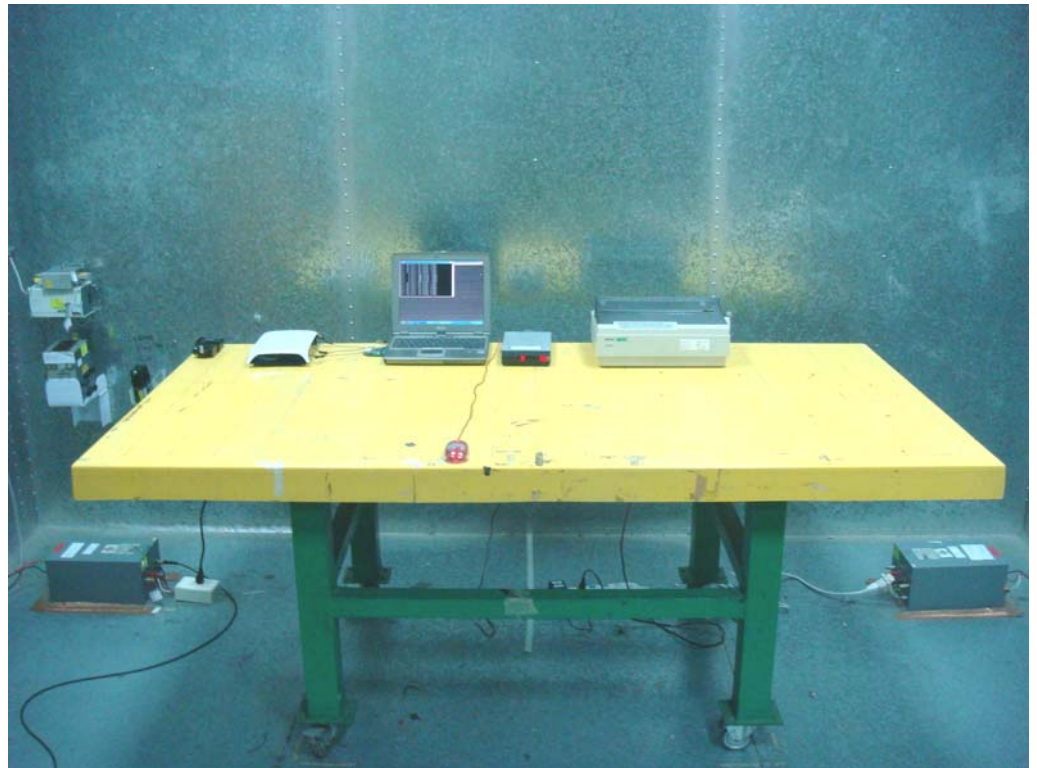


SIDE VIEW

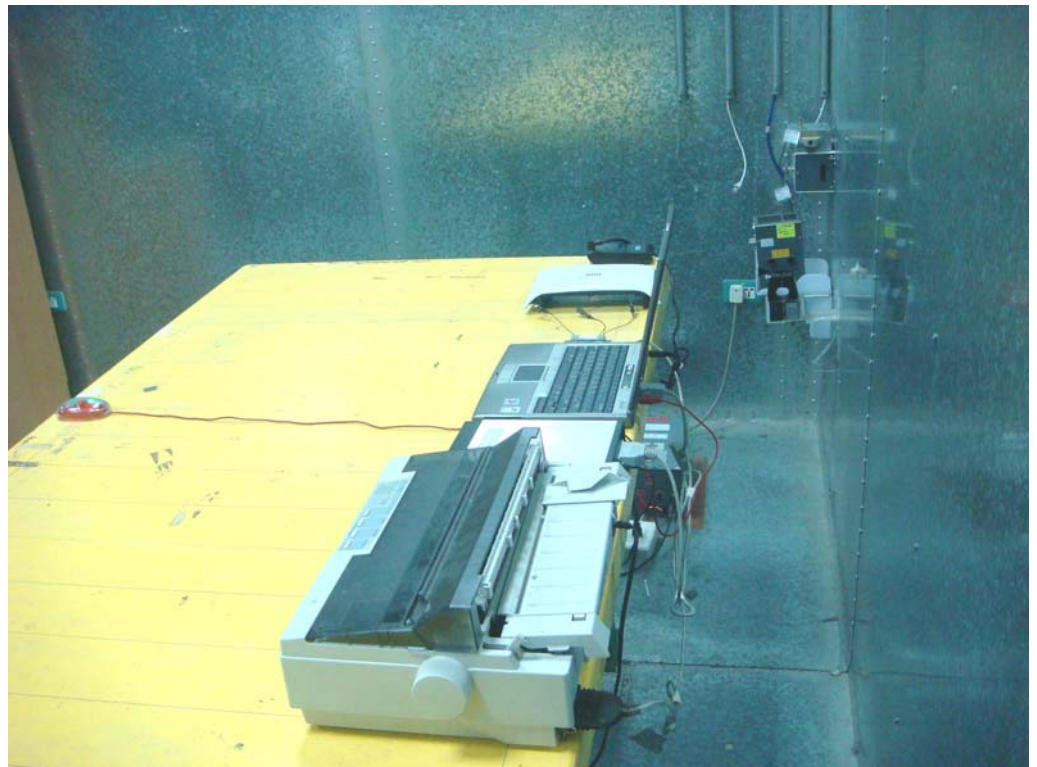


Antenna 5

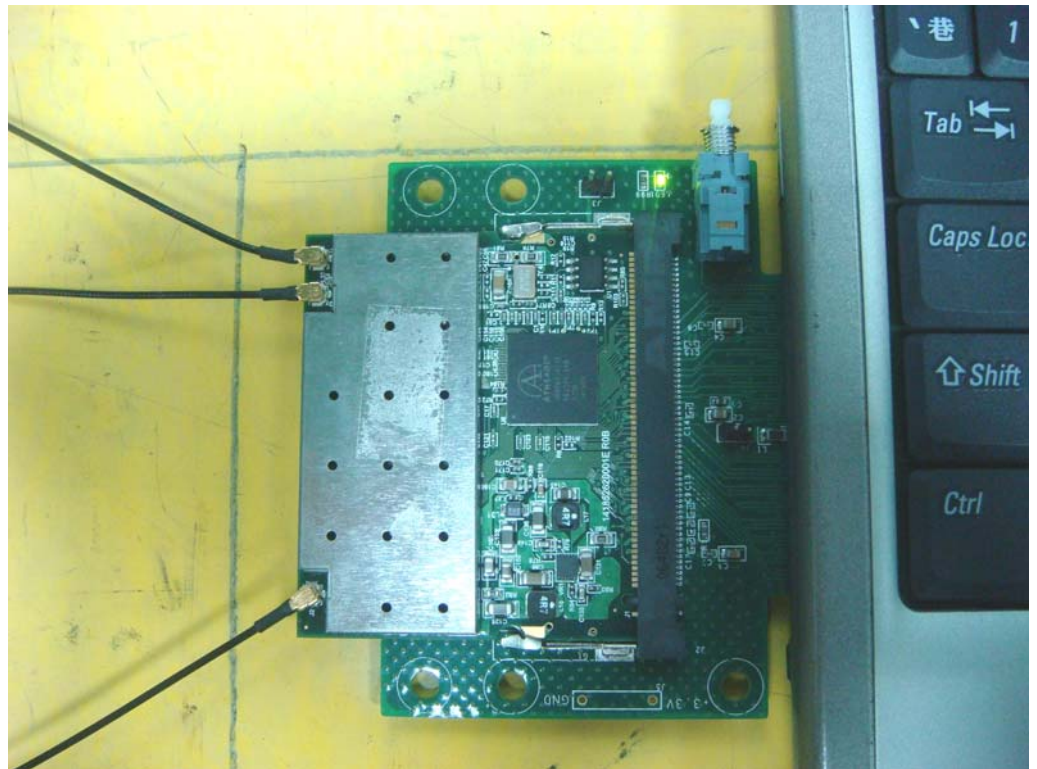
FRONT VIEW



REAR VIEW



SIDE VIEW



Antenna 6

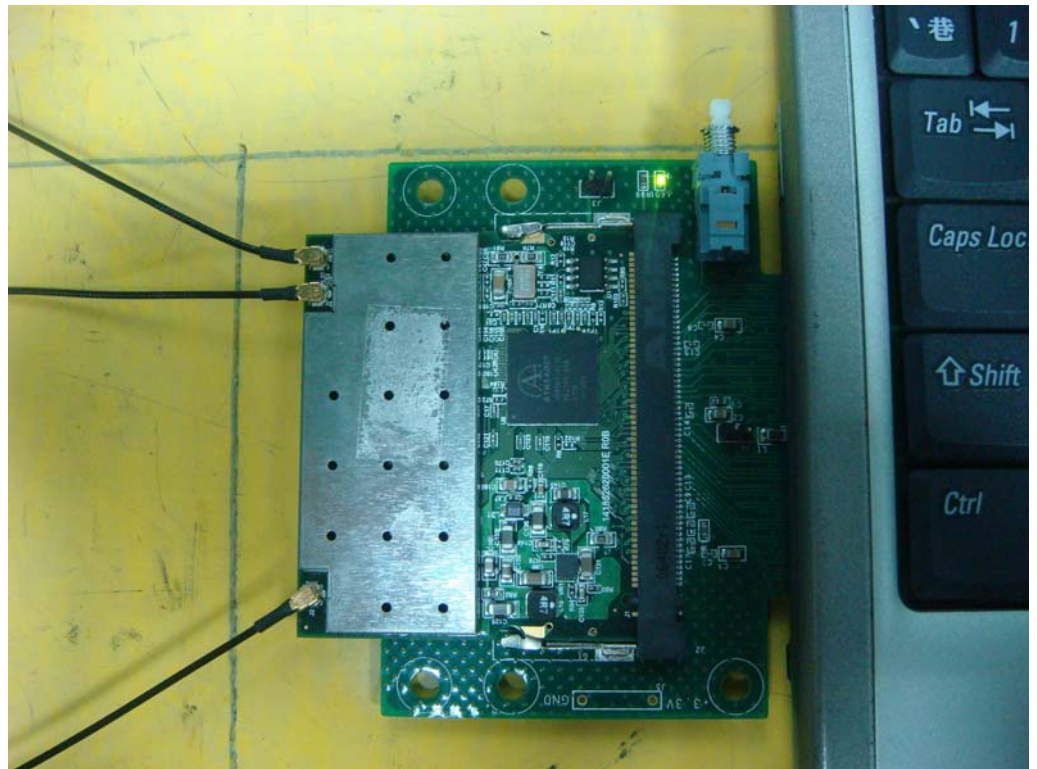
FRONT VIEW



REAR VIEW

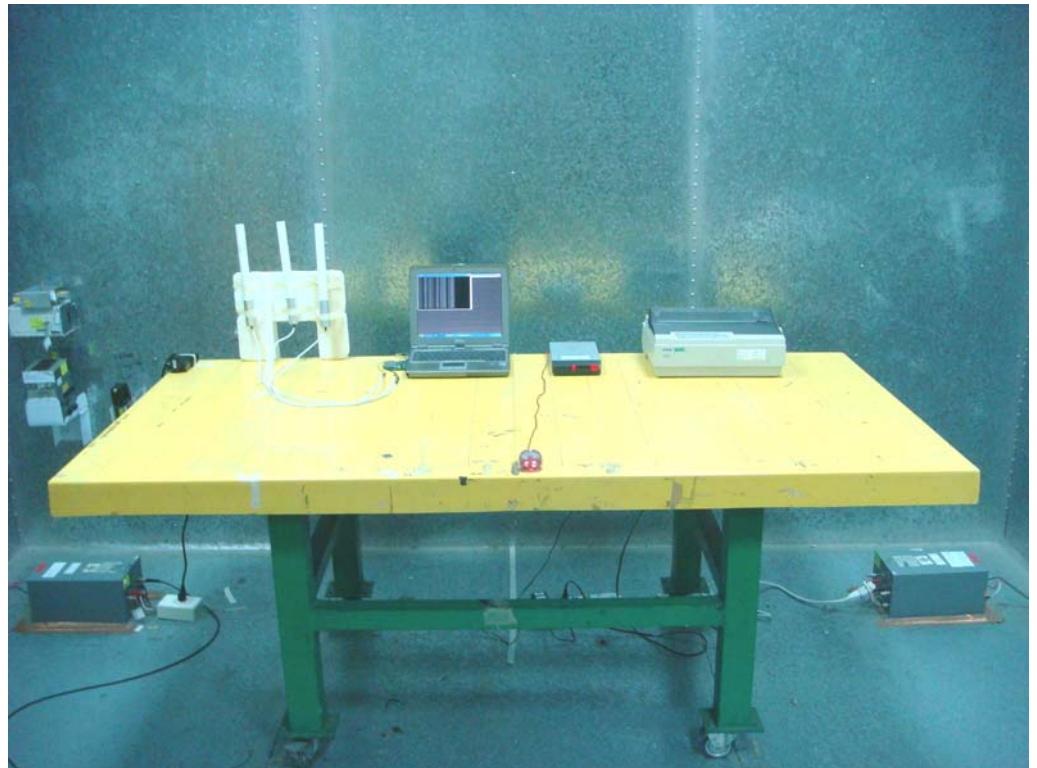


SIDE VIEW

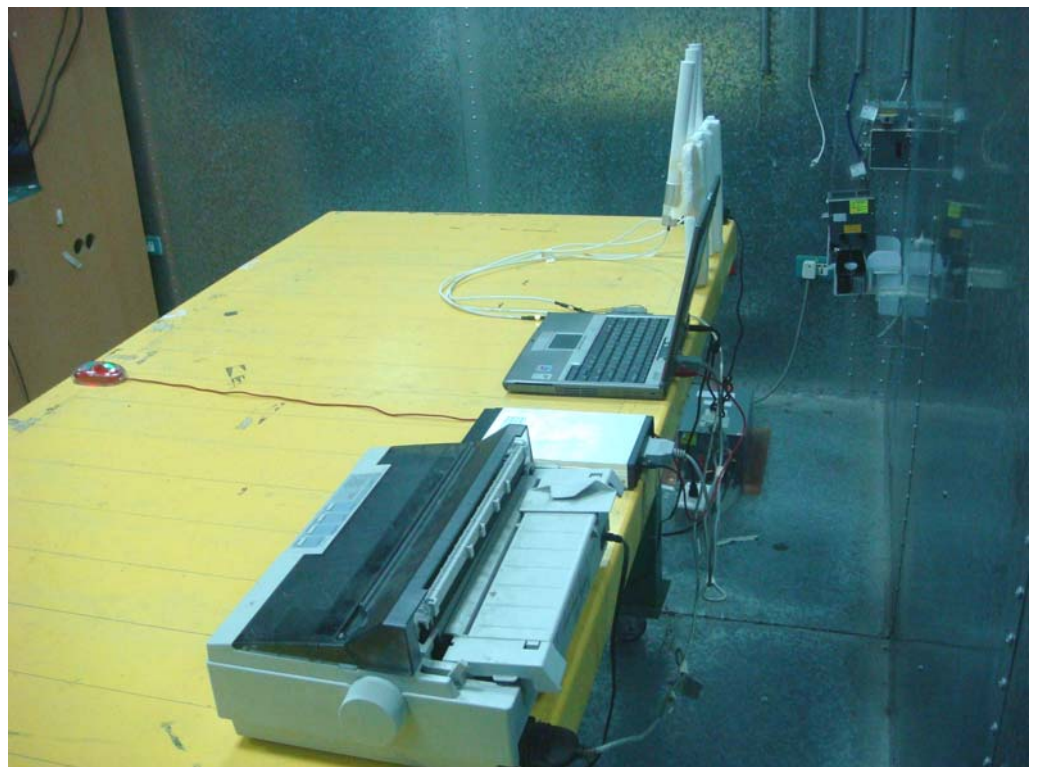


Antenna 7

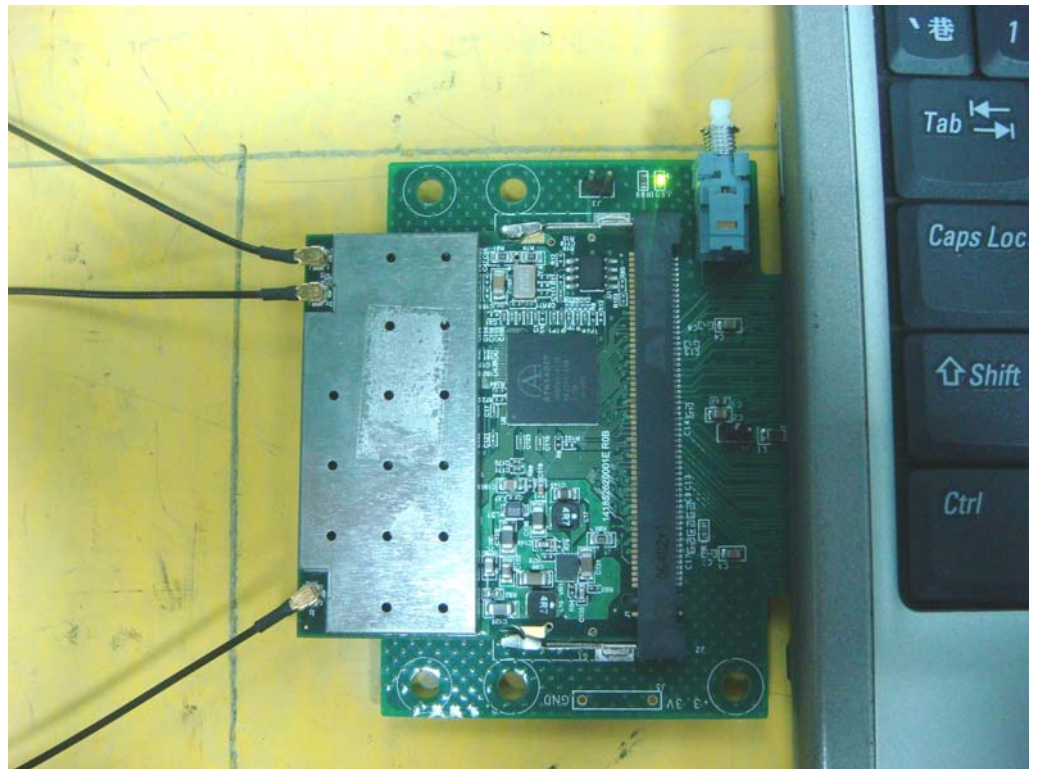
FRONT VIEW



REAR VIEW



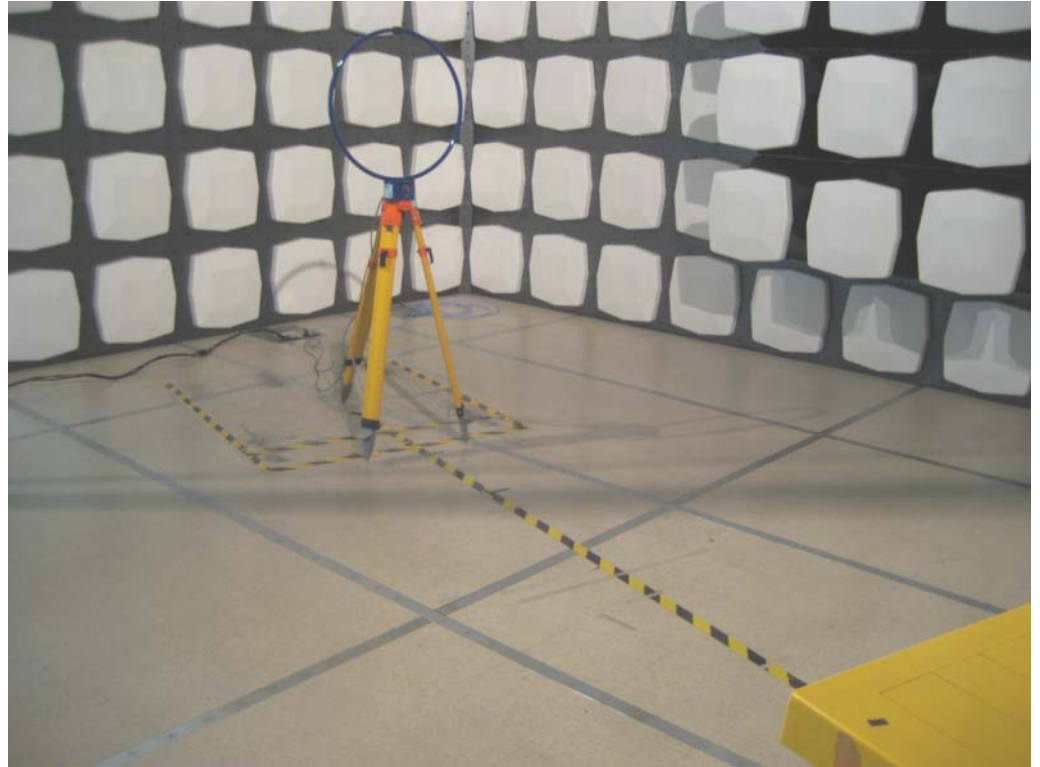
SIDE VIEW



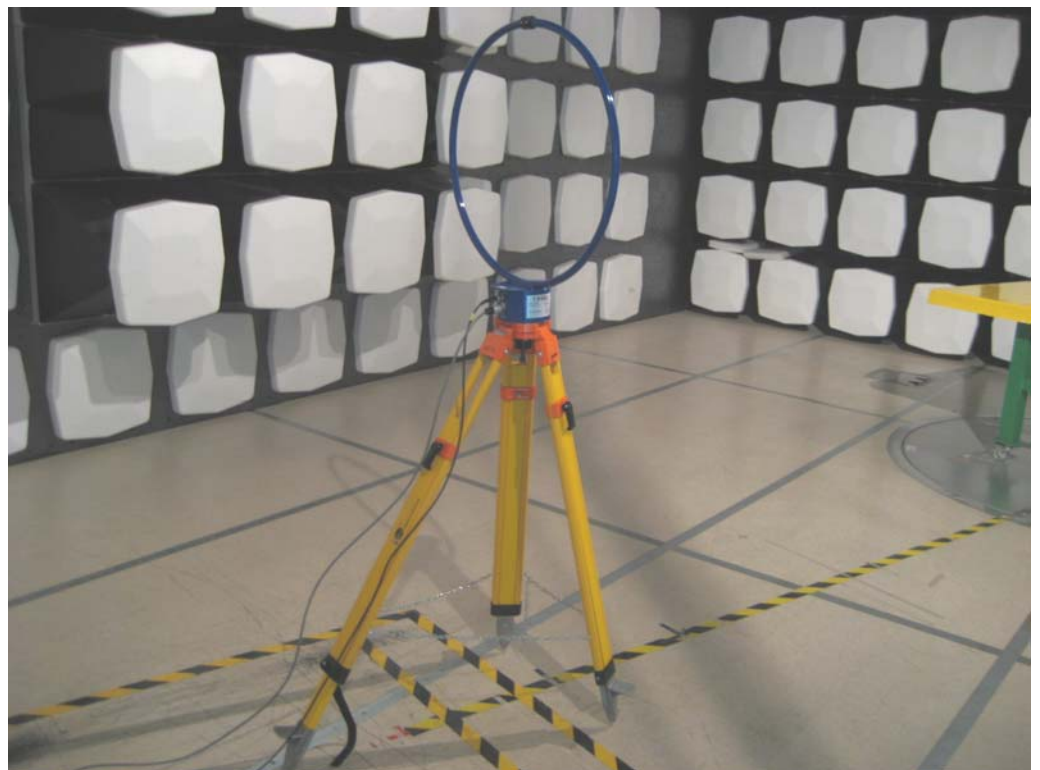
2. Photographs of Radiated Emissions Test Configuration

9kHz ~30MHz

FRONT VIEW



REAR VIEW

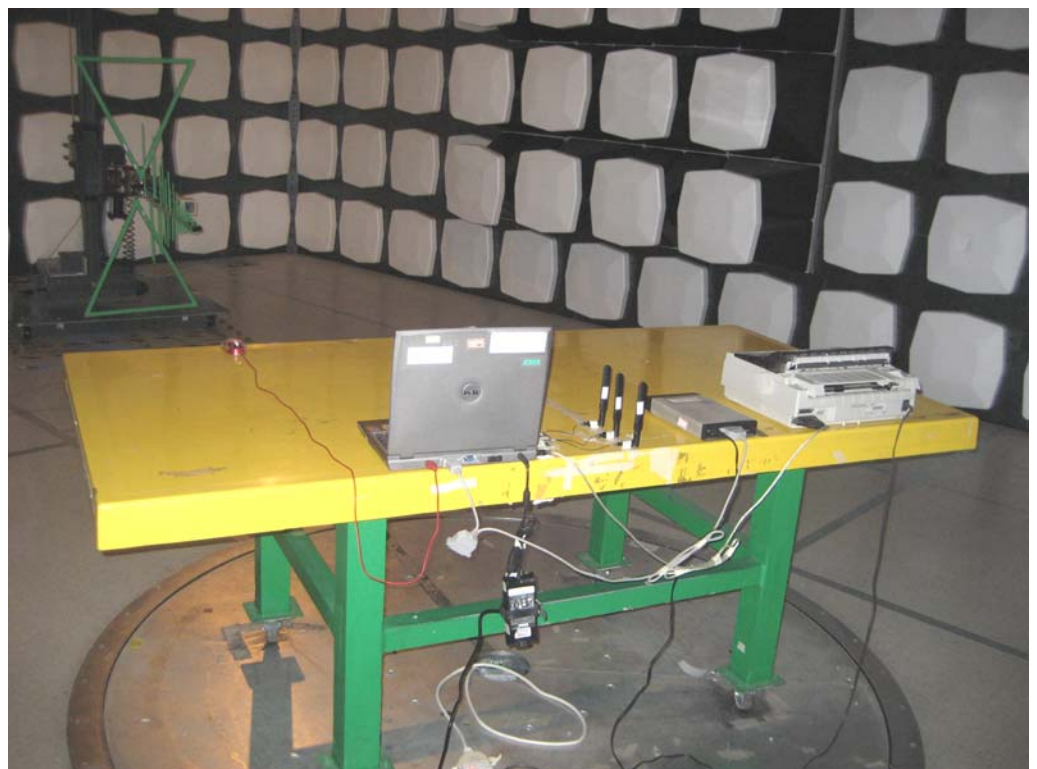


Antenna 1
30MHz~1GHz

FRONT VIEW



REAR VIEW



Above 1GHz

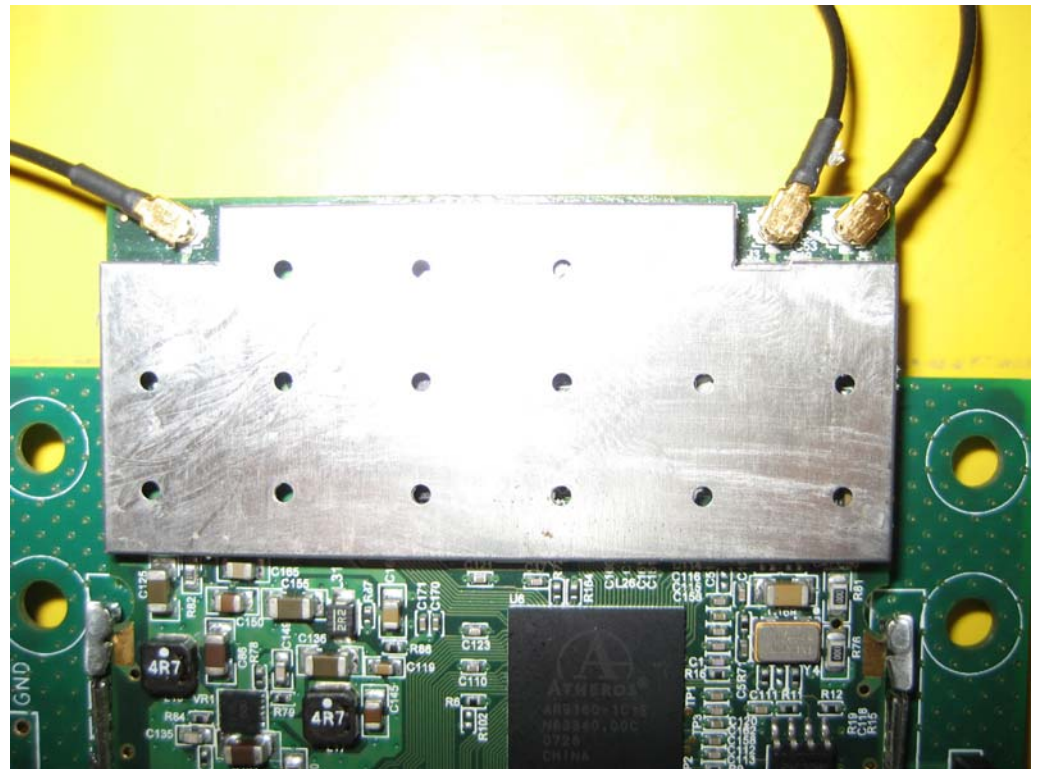
FRONT VIEW



REAR VIEW



SIDE VIEW

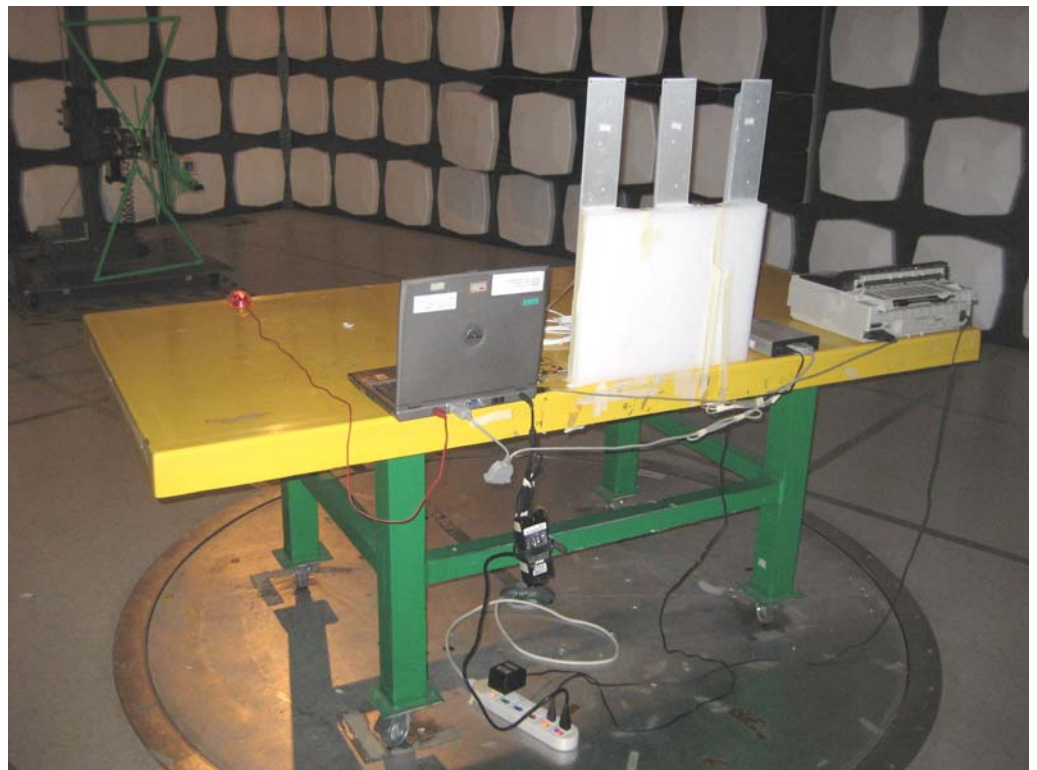


Antenna 2
30MHz~1GHz

FRONT VIEW

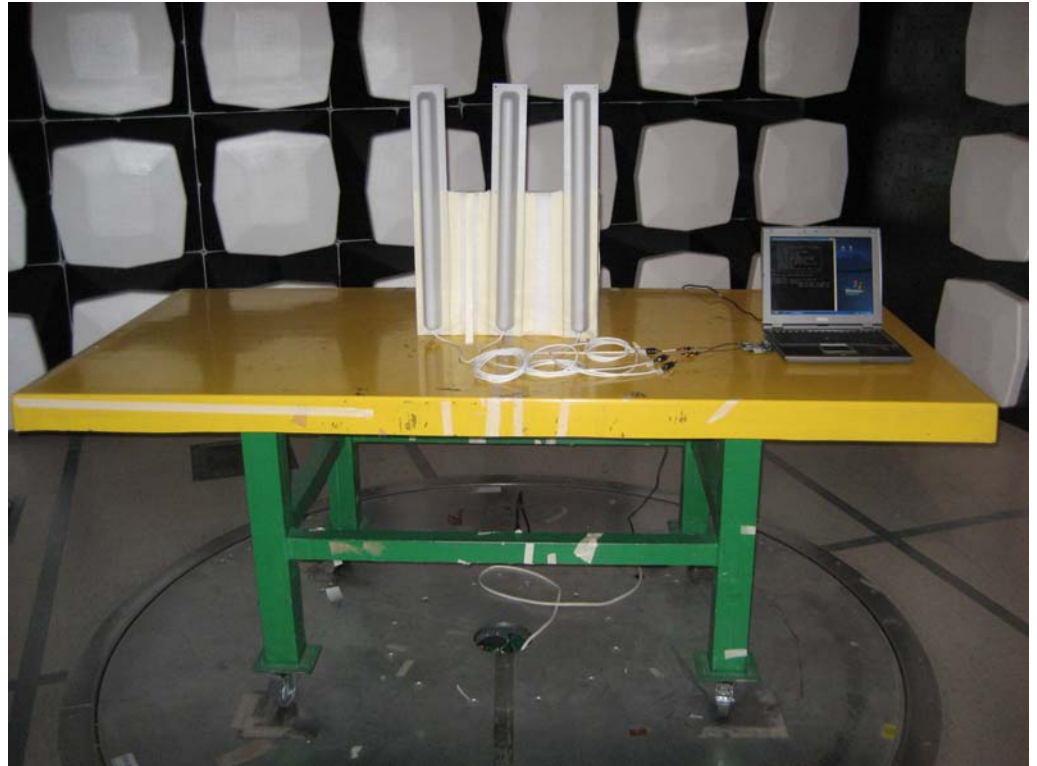


REAR VIEW



Above 1GHz

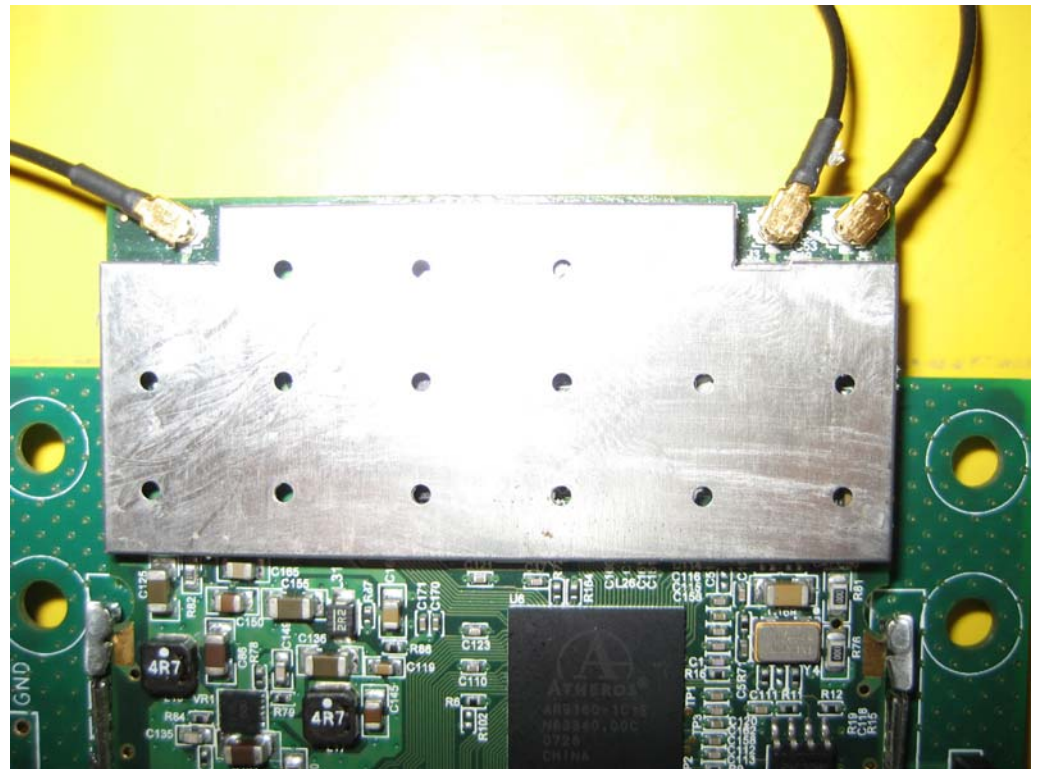
FRONT VIEW



REAR VIEW



SIDE VIEW

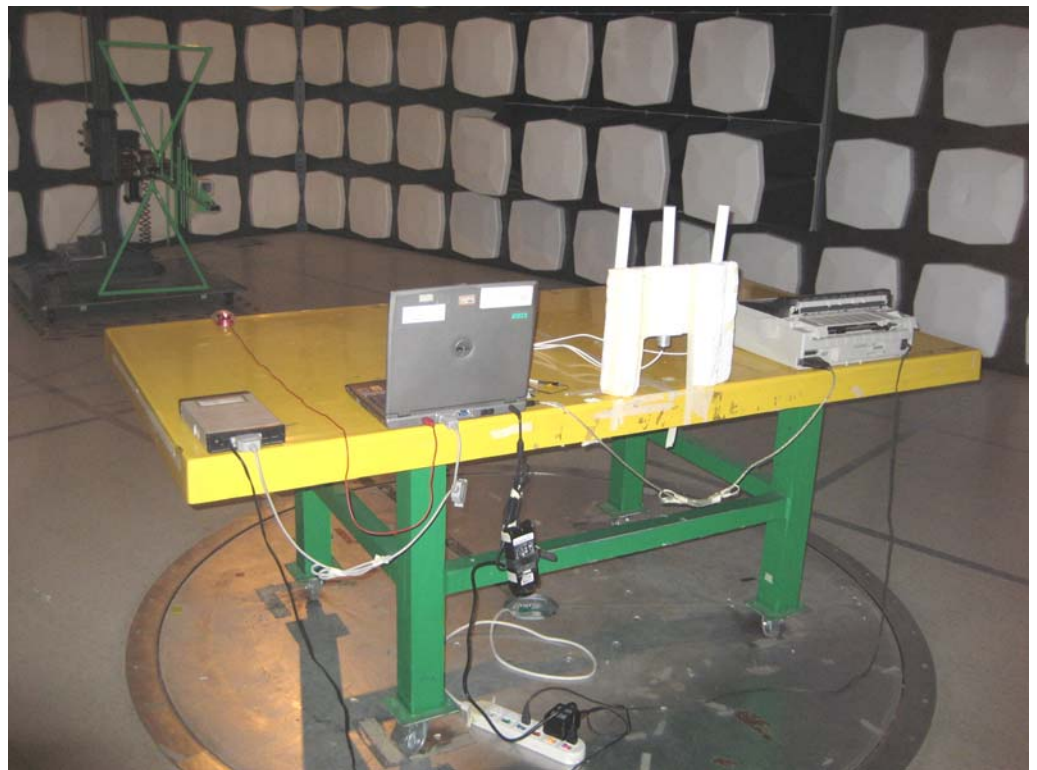


Antenna 3
30MHz~1GHz

FRONT VIEW



REAR VIEW



Above 1GHz

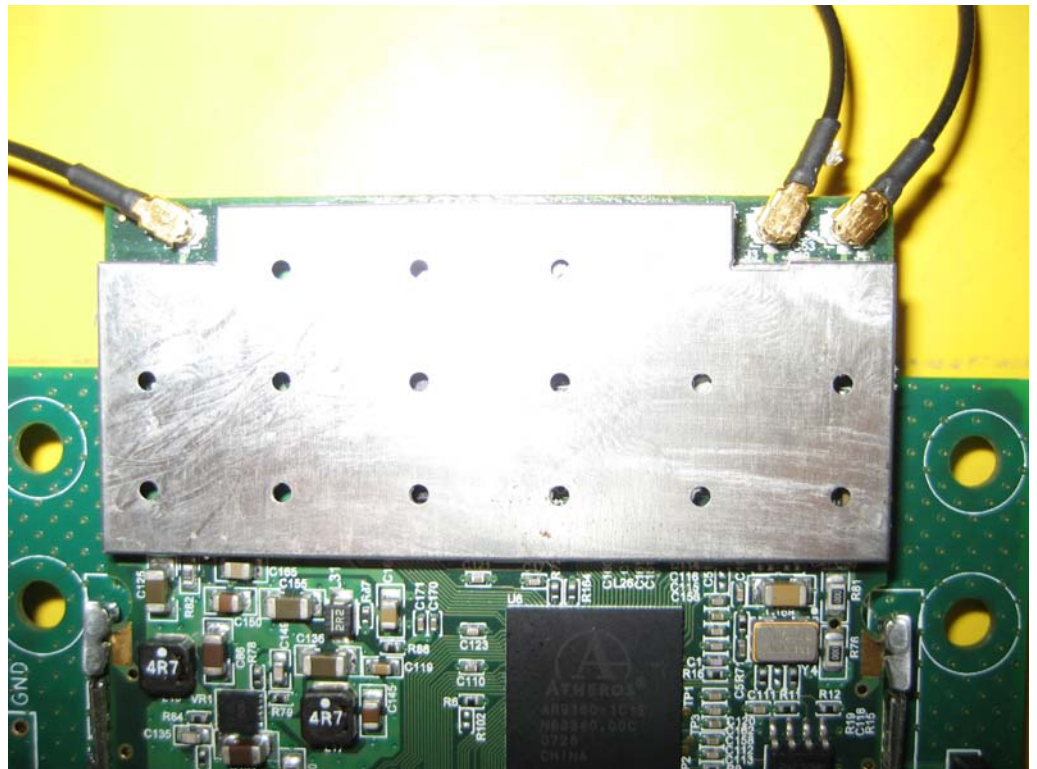
FRONT VIEW



REAR VIEW



SIDE VIEW



Antenna 4
30MHz~1GHz

FRONT VIEW



REAR VIEW



Above 1GHz

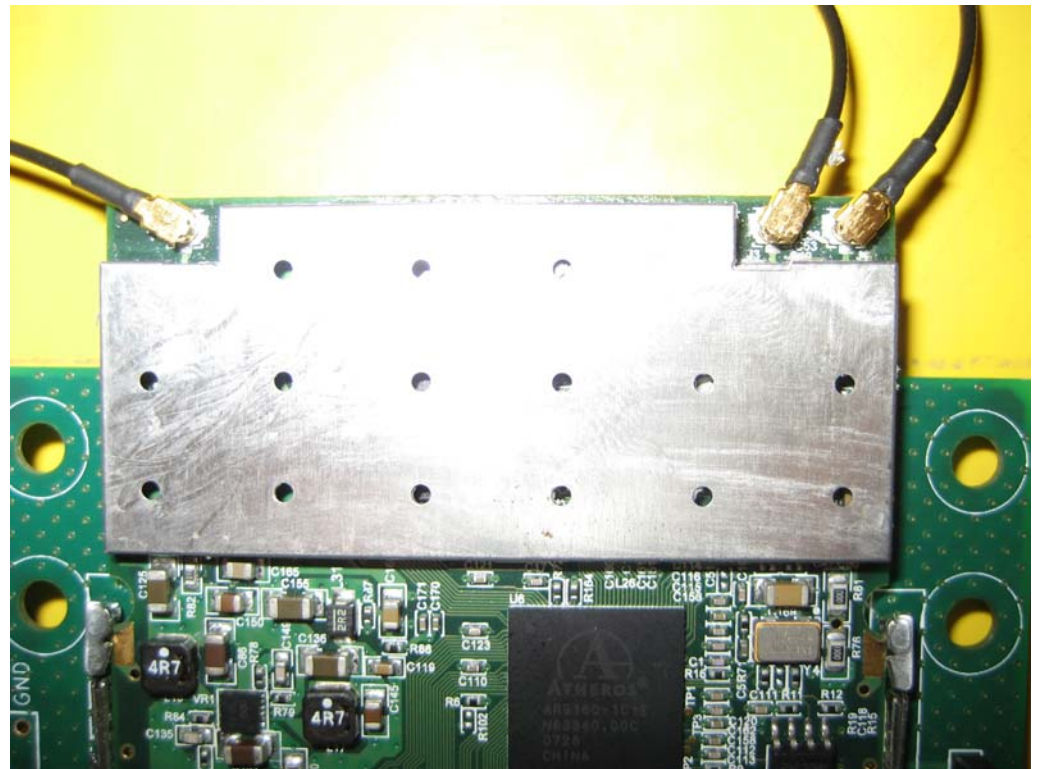
FRONT VIEW



REAR VIEW



SIDE VIEW



Antenna 5
30MHz~1GHz

FRONT VIEW



REAR VIEW



Above 1GHz

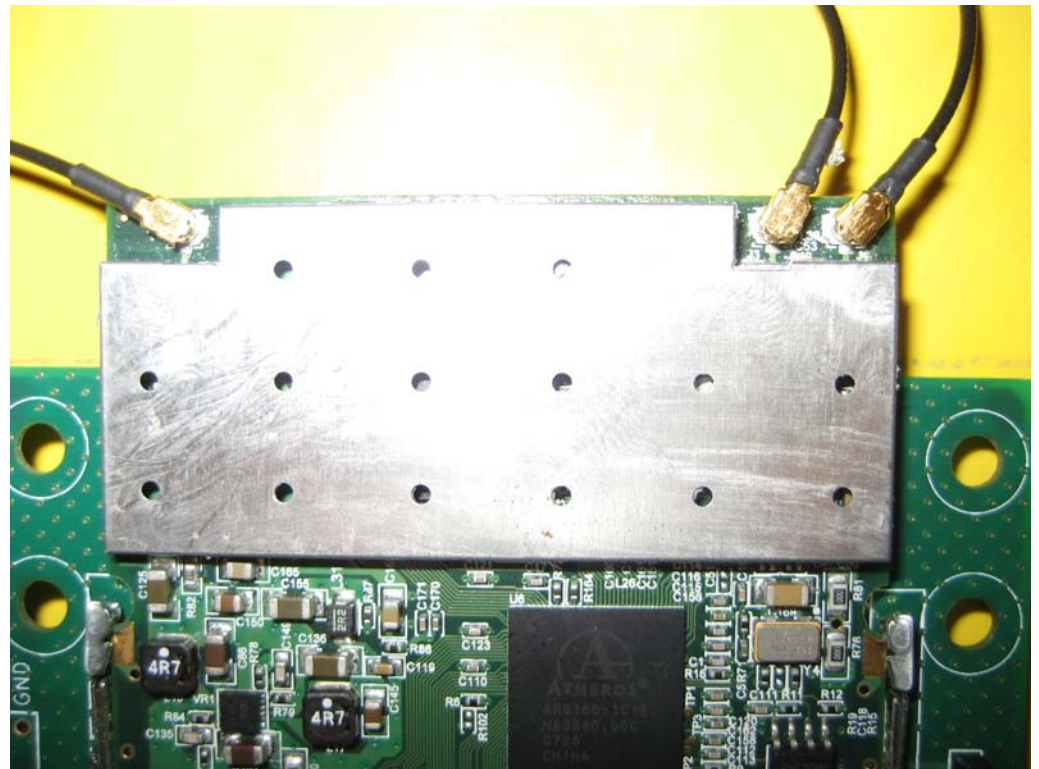
FRONT VIEW



REAR VIEW



SIDE VIEW

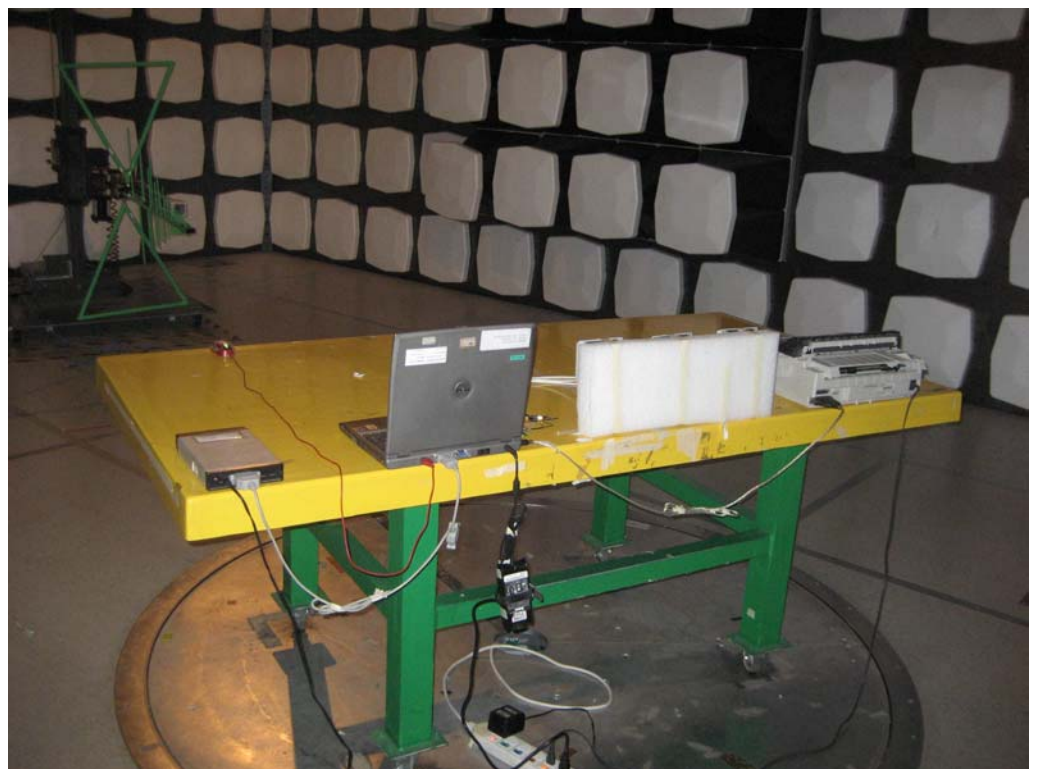


Antenna 6
30MHz~1GHz

FRONT VIEW



REAR VIEW



Above 1GHz

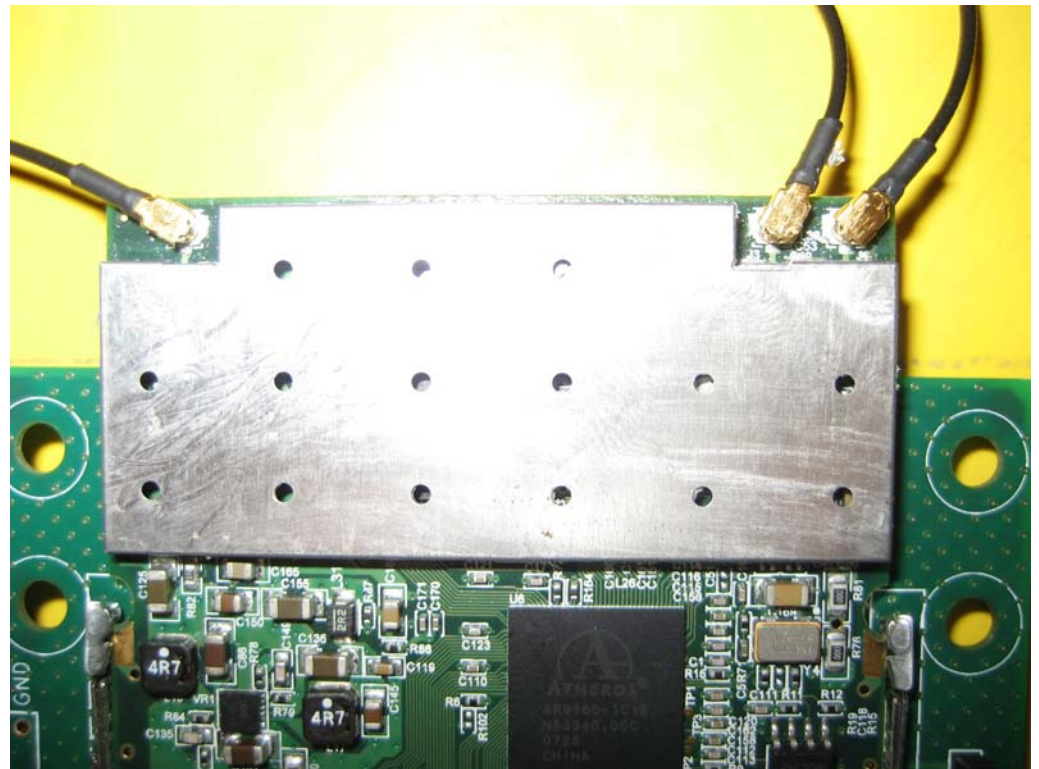
FRONT VIEW



REAR VIEW

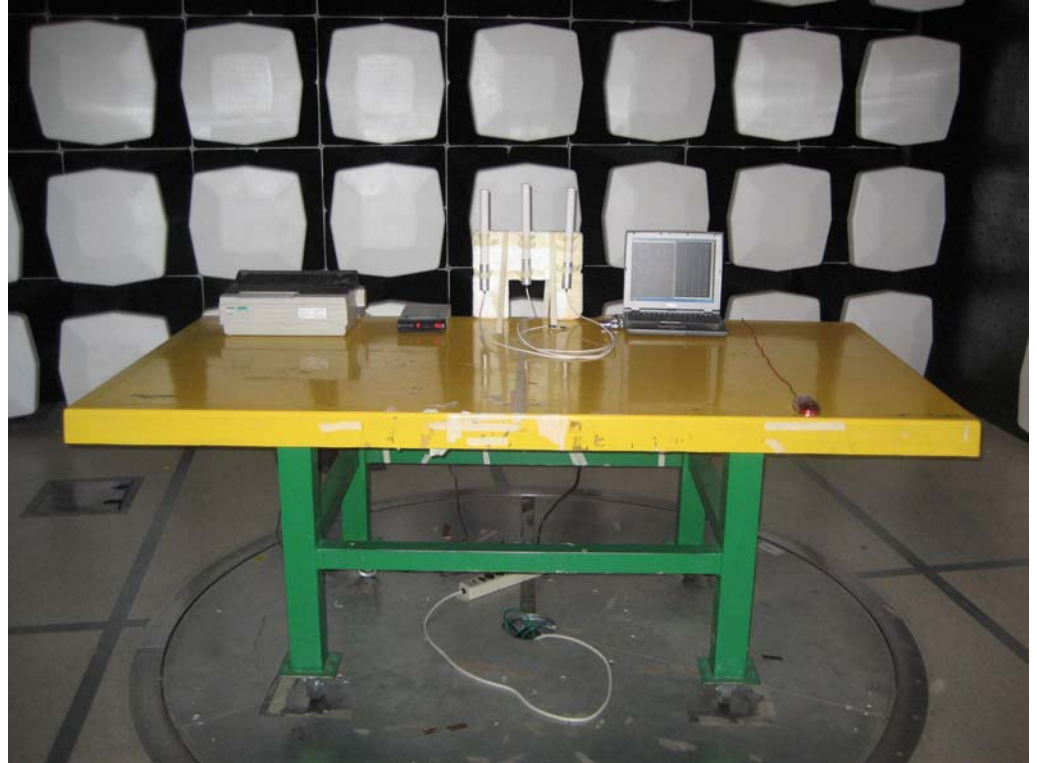


SIDE VIEW

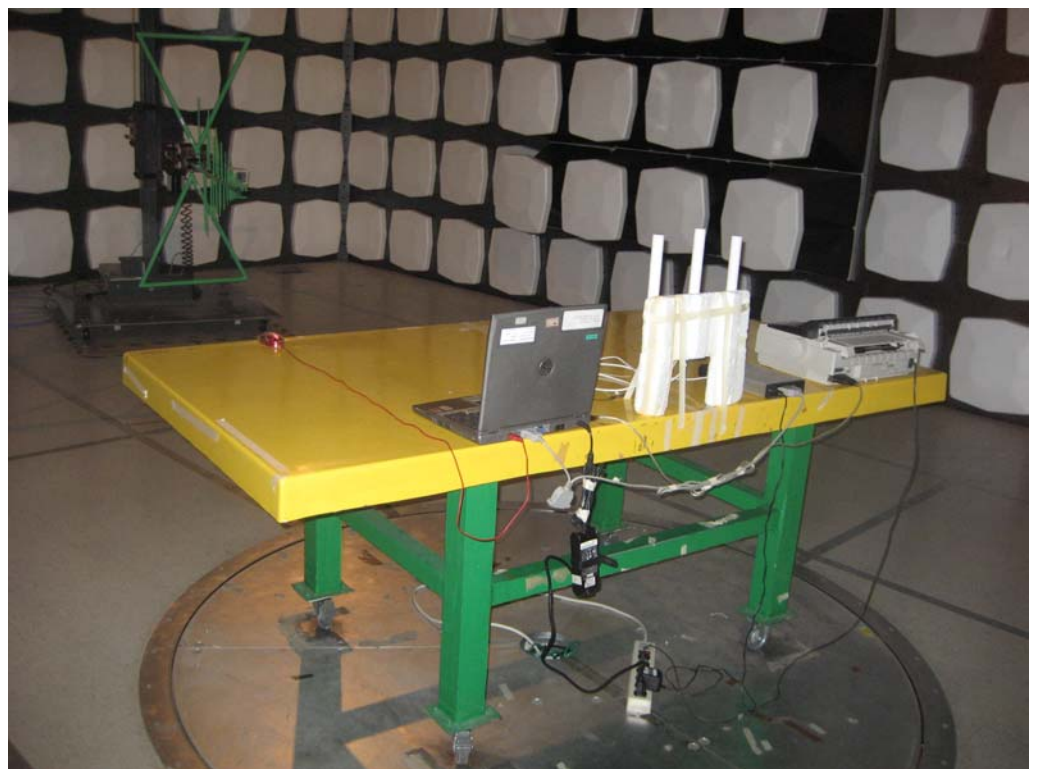


Antenna 7
30MHz~1GHz

FRONT VIEW

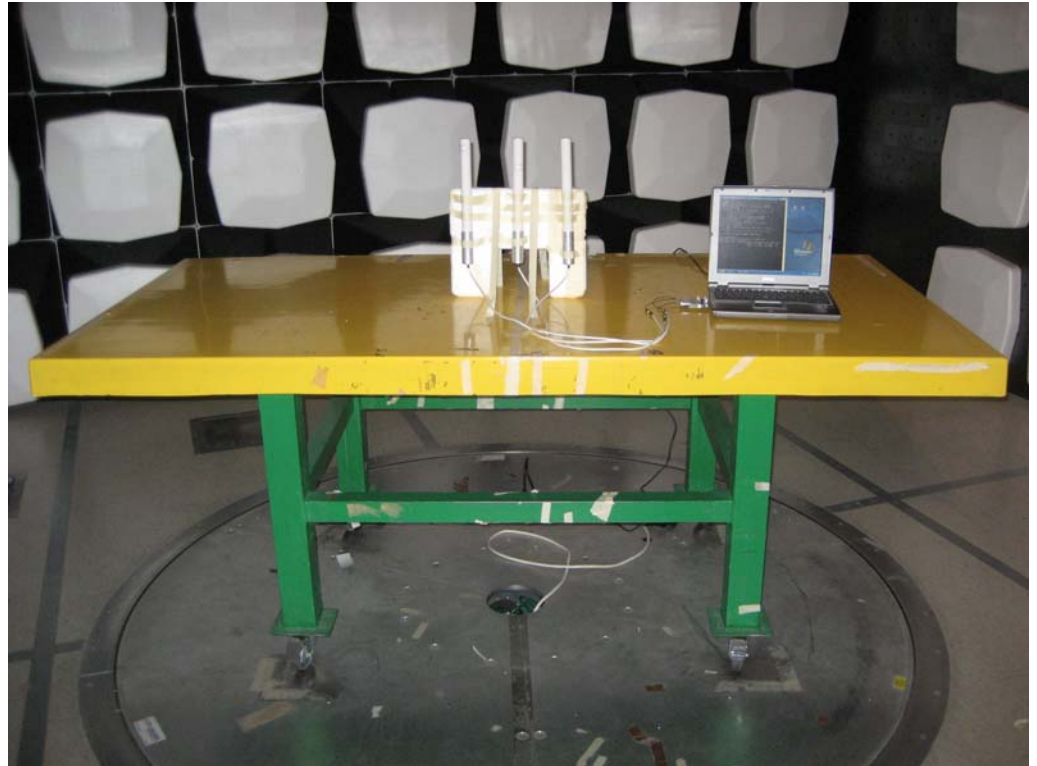


REAR VIEW

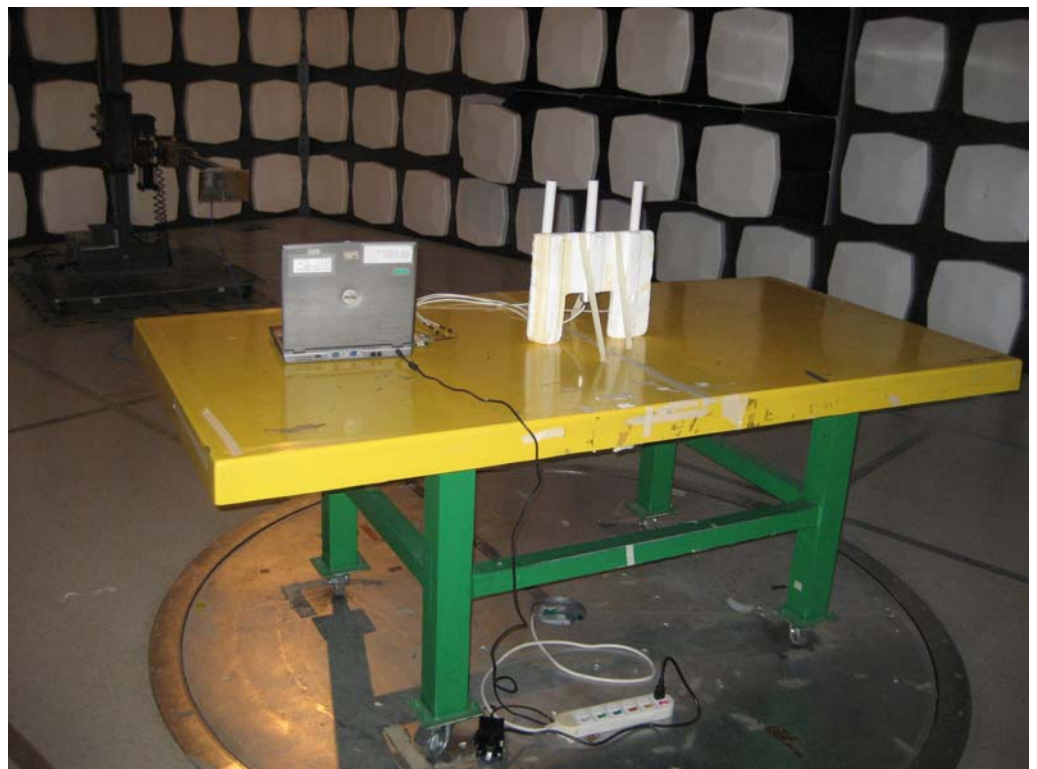


Above 1GHz

FRONT VIEW



REAR VIEW



SIDE VIEW

