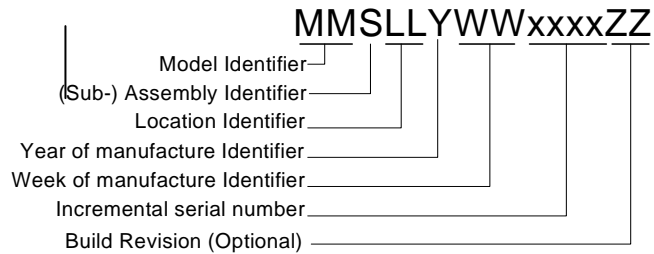


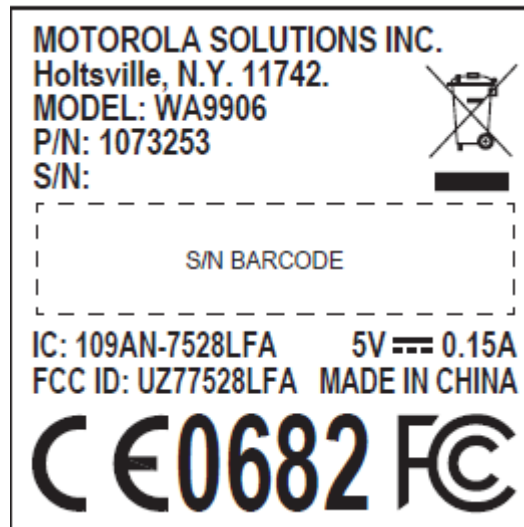


WA9906 -RFID MODULE LF-ID1 INSTALLATION INSTRUCTION

1. Serial number codification

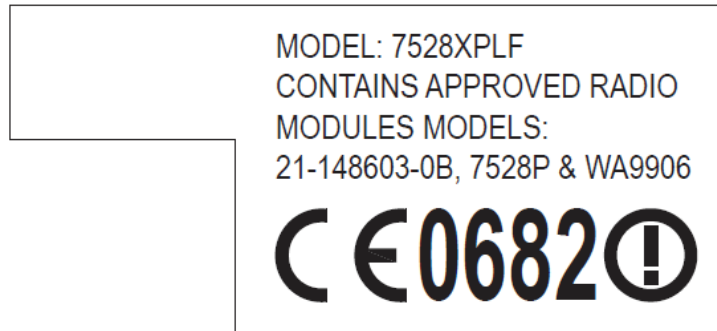


2. Label for RFID Module LF-ID1

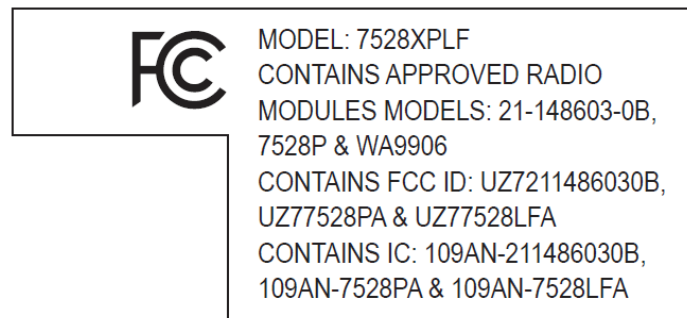


3. Label for 7528 terminal

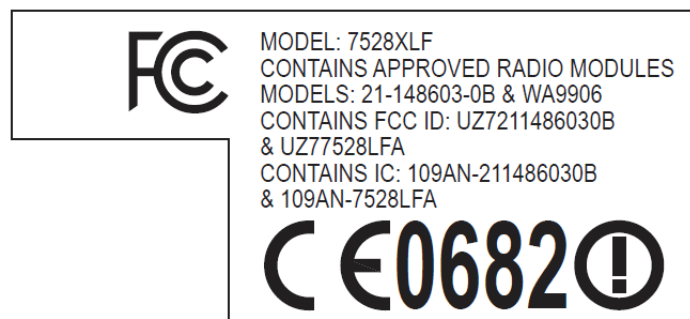
- a. WWAN European variant:



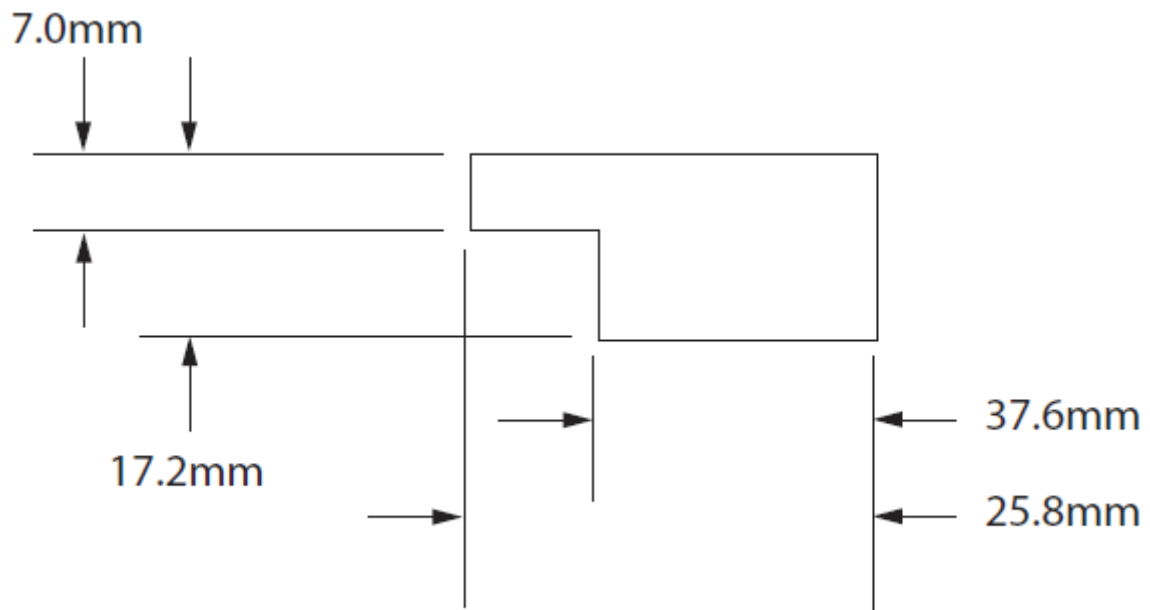
- b. WWAN American variant:



- c. WIFI variant:

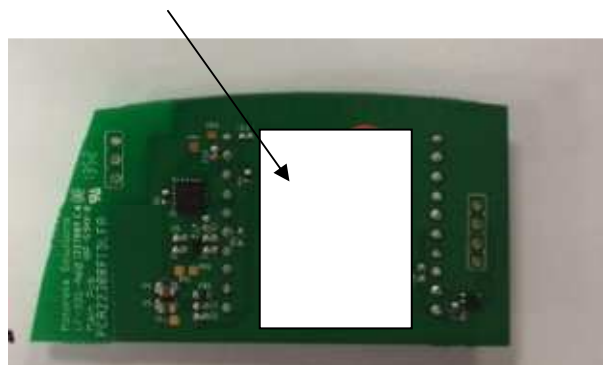


Label dimensions:



1. Installation procedure

1. Label area for RFID Module LD-ID1 label



2. Label area for RFID Module LF-ID1 label into 7528 terminal:

Label is located under battery.

