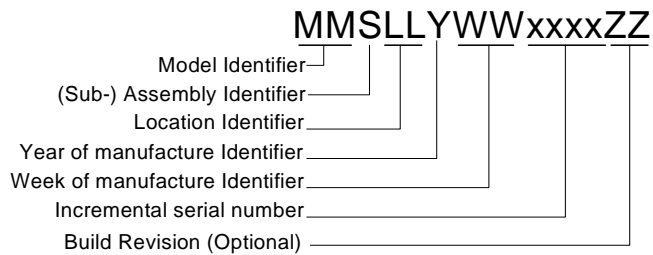


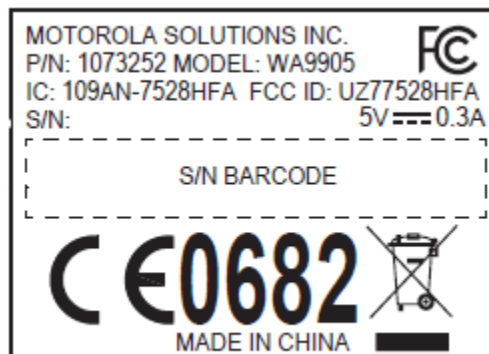


WA9905 -RFID MODULE HF-KR3-2S INSTALLATION INSTRUCTION

1. Serial number codification

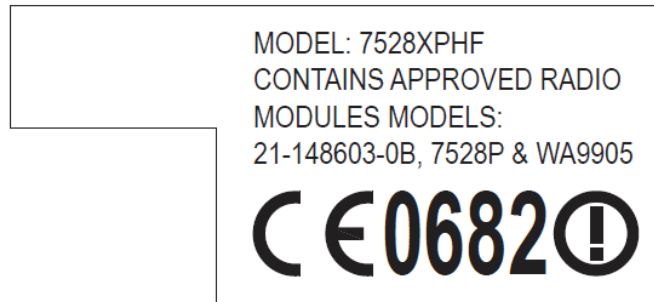


2. Label for RFID Module HF-KR3-2S

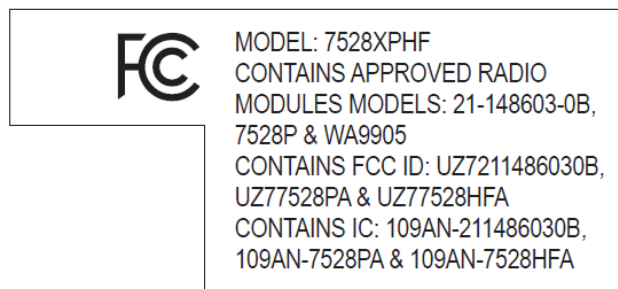


3. Label for 7528 terminal

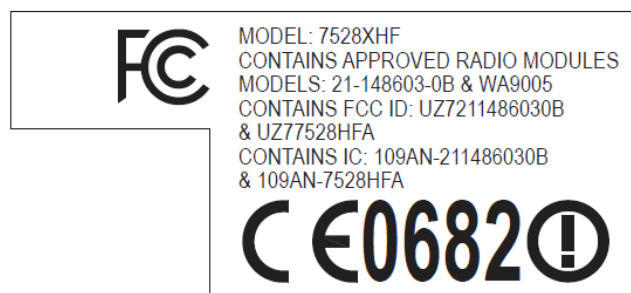
- a. WWAN variant Europe:



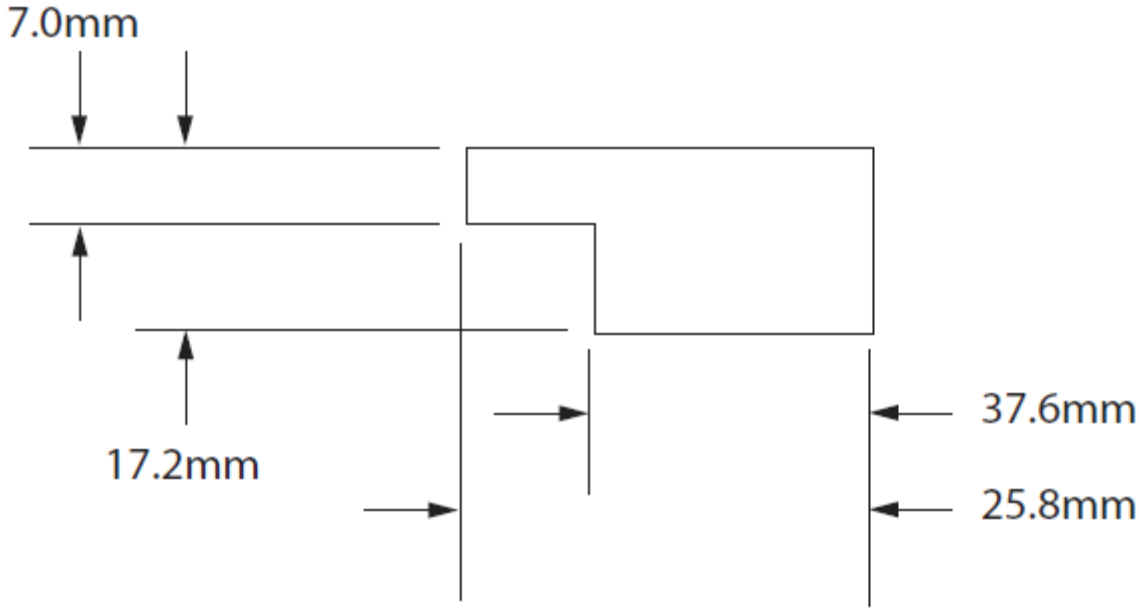
- b. WWAN variant North America:



- c. WIFI variant

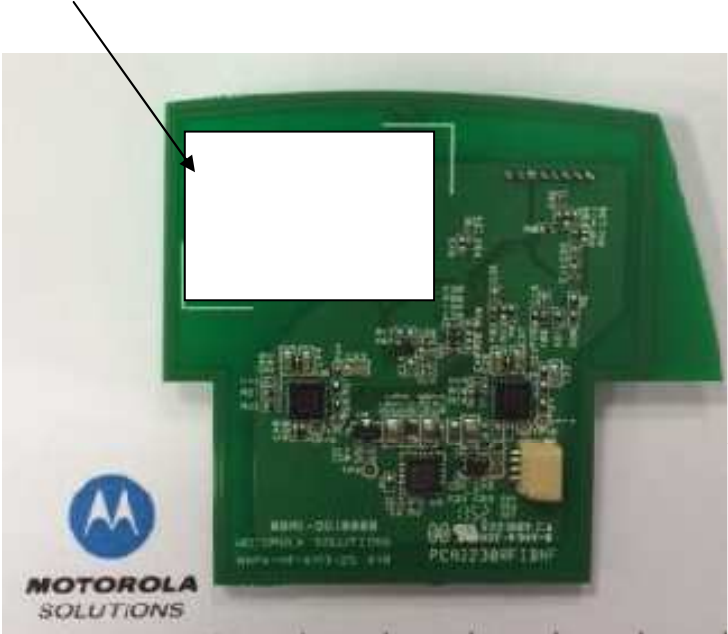


Label dimensions:



4. Installation procedure

- 1. Label area for RFID Module HF-KR3-2S label



2. Label area for RFID Module HF-KR3-2S label into 7528 terminal:

Label is located under battery.

